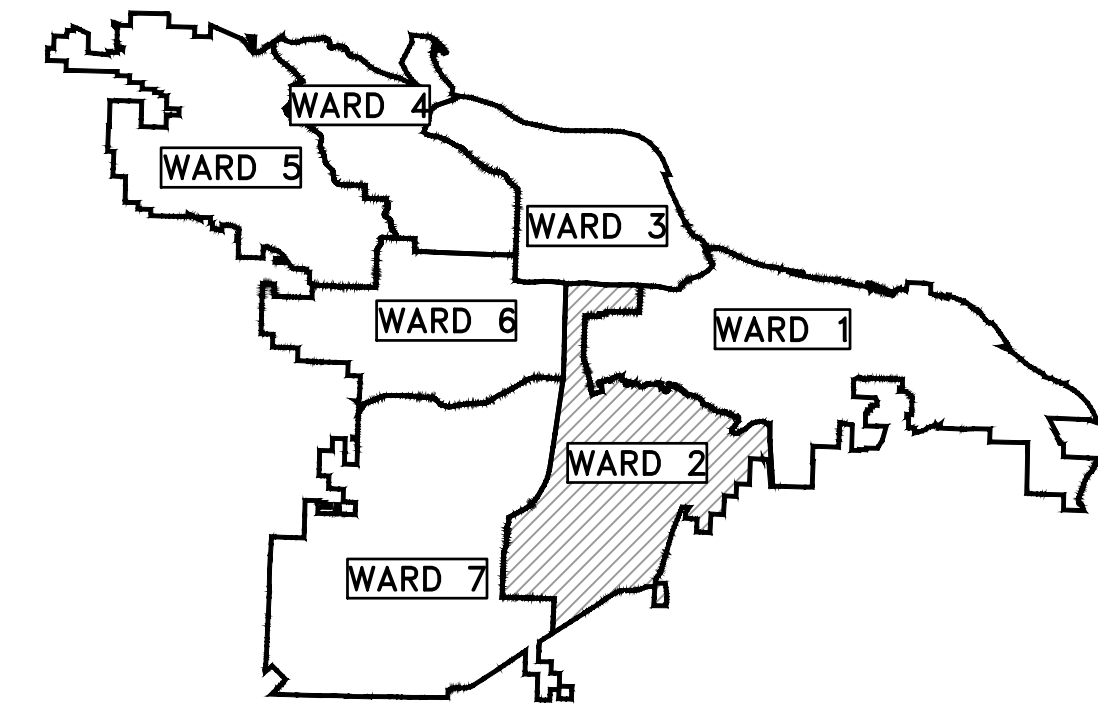


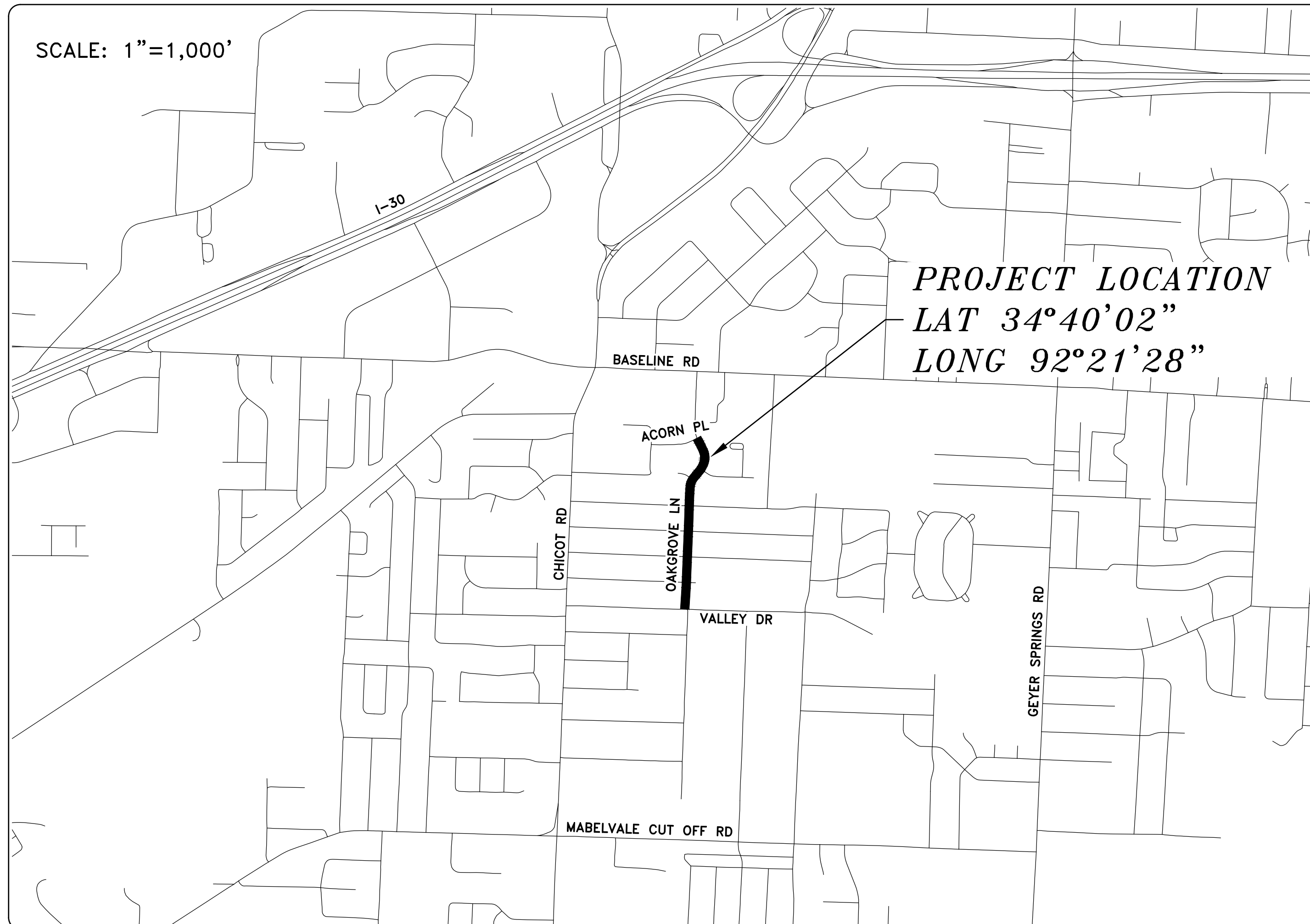
# CLR PROJECT 02-15-SW-81

## OAKGROVE LANE SIDEWALKS

(VALLEY DRIVE TO ACORN PLACE)



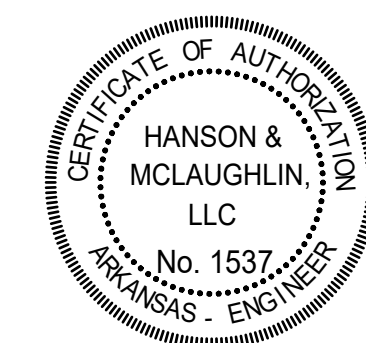
PROJECT LOCATION - WARD 2



SHEET NO.	TITLE
C1	COVER SHEET
C2	LEGEND, QUANTITIES AND SPECIAL DETAILS
C3	PLAN SHEET 1 STA 0+00 TO 20+00
C4	PLAN SHEET 2 STA 20+00 TO 29+00
C5	PLAN SHEET 3 STA 29+00 TO 32+96
C6	DRIVEWAY PROFILES 1
C7	DRIVEWAY PROFILES 2
C8	DRIVEWAY PROFILES 3



Know what's below.  
Call before you dig.



REVISIONS	DATE

CITY OF LITTLE ROCK, ARKANSAS  
OAKGROVE LANE SIDEWALKS  
COVER SHEET

DEPARTMENT OF PUBLIC WORKS  
CIVIL ENGINEERING  
701 W. MARKHAM  
LITTLE ROCK, ARKANSAS 72201



DRAWN BY	KMH
DESIGNED	KMH
CHECKED	FJS
DATE	6-28-19
SCALE	N.T.S.
PROJECT NO.	02-15-SW-81
SHEET NO.	C1



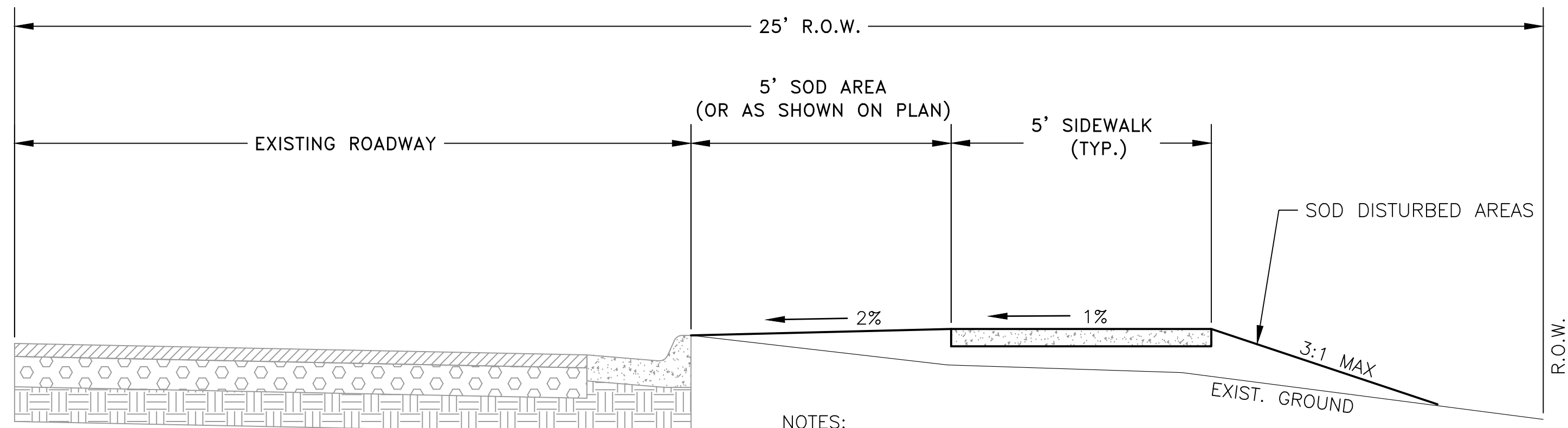
**2019-2021**  
**BOND PROGRAM**

DEPARTMENT OF PUBLIC WORKS  
CIVIL ENGINEERING  
701 WEST MARKHAM STREET  
LITTLE ROCK, ARKANSAS 72201

**HANSON & MCLAUGHLIN, LLC**  
320 EXECUTIVE COURT, SUITE 202  
LITTLE ROCK, ARKANSAS 72205  
(501) 716-2850

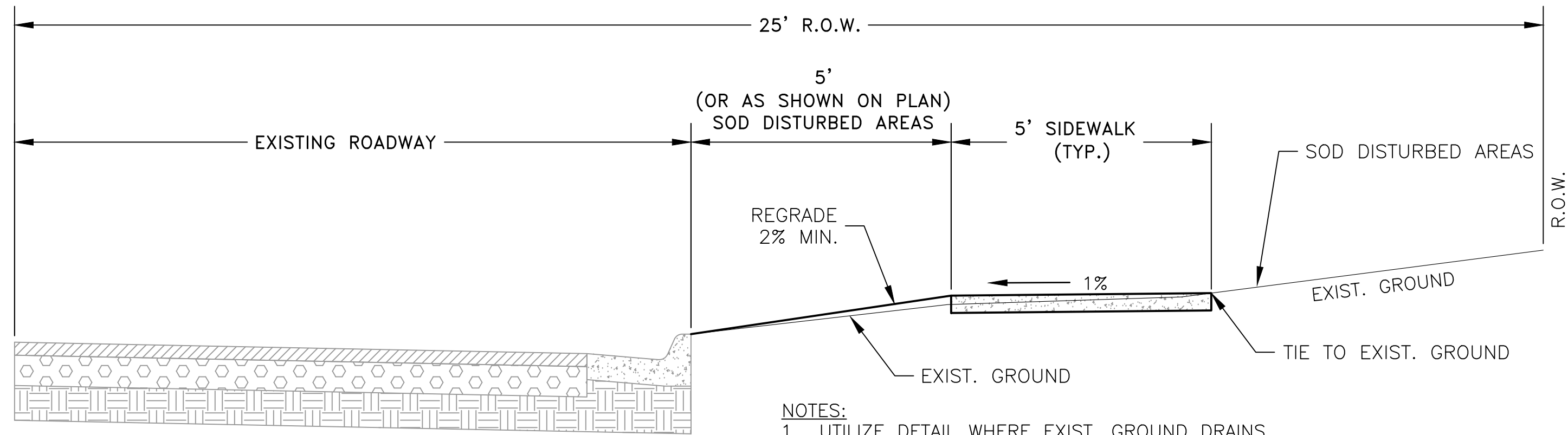
CLR PROJECT 02-15-SW-81  
OAKGROVE LANE SIDEWALKS  
JUNE 28, 2019

ITEM #	ITEM DESCRIPTION	UNIT	QUANTITY
2.01	Site Preparation (Incl. Mobilization)	LS	1
3.01	Unclassified Excavation	CY	20
3.06	Borrow Material	CY	40
3.40	Topsoil	CY	183
7.06	Concrete Driveway (6" Thick), Standard Finish	SF	3,243
8.03	Concrete Curb and Gutter (Class 3)	LF	299
9.04	Concrete Sidewalk (4" Thick)	SF	7,407
9.04 SP	Sidewalk Over Exposed Tree Roots	SF	55
10.04	Curb Inlet - 4' Box	EA	1
13.15C	Storm Drain Pipes, 15", Cross Drain	LF	31
13.61	Tie Into Existing Junction Box	EA	1
14.01	Solid Sodding (Bermuda)	SY	1,646
16.01	Maintenance of Traffic	LS	1
17.01	Pavement Repairs	SY	17
18.01	Remove and Replace Fence	LF	100
18.50	Access Ramp	SF	823
18.55	Water for Dust Control	GAL	500
19.01	Final Clean-Up	LS	1
26.10	Trench & Excavation Safety	LS	1



NOTES:  
1. UTILIZE DETAIL WHERE CALLED FOR ON PLANS.

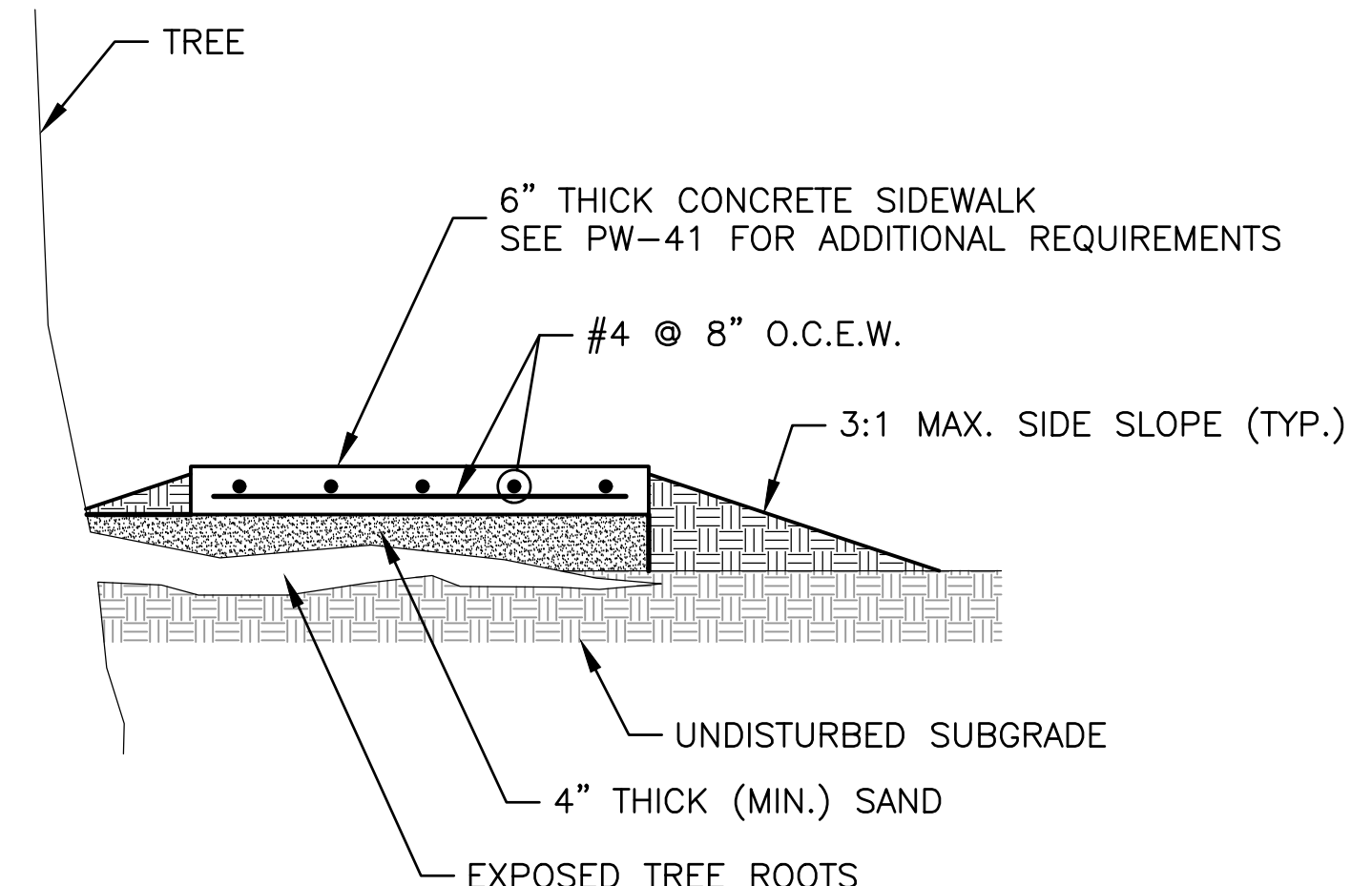
SIDEWALK DRAINING TO STREET-1  
NTS



NOTES:  
1. UTILIZE DETAIL WHERE EXIST. GROUND DRAINS TO STREET.

SIDEWALK DRAINING TO STREET-2  
NTS

- | EXISTING                     | PROPOSED            |  |         |
|------------------------------|---------------------|--|---------|
| IRON ROD                     | ○ IR                | CONTOUR  | ○ 25    |
| PK NAIL                      | ○ PK                | SPOT ELEVATION   | ○ 25.00 |
| R.R. SPIKE                   | ○ RR(Sp)            | SPOT CURB ELEVATION                                    | ○ 25.50 |
| CONC. MONUMENT               | □ CM                | STORM SEWER - PIPE                                     | ○ 25.00 |
| WATER VALVE                  | ⊗ WV                | STORM SEWER - MITERED END SECTION                      | ○ 25.50 |
| WATER METER                  | ⊞ WM                | STORM SEWER - GRATE INLET                              | ○ 25.00 |
| FIRE HYDRANT                 | ⊕ FH                | STORM SEWER - JUNCTION BOX                             | ○ 25.50 |
| GAS METER                    | ⊞ GM                | STORM SEWER - FLARED END SECTION                       | ○ 25.00 |
| GAS VALVE                    | ⊗ GV                | STORM SEWER - HEADWALL                                 | ○ 25.50 |
| CLEAN-OUT                    | ○ CO                | STORM SEWER - INLET WITH SINGLE EXTENSION              | ○ 25.00 |
| GUARD POST (BOLLARD)         | ● GP                | STORM SEWER - INLET WITH DOUBLE EXTENSION              | ○ 25.50 |
| SIGN POST                    | ⊕                   | STORM SEWER - AREA INLET                               | ○ 25.00 |
| BENCHMARK                    | ⊕                   | GRADE BREAK LINE                                       | — — — — |
| STORM SEWER MANHOLE          | ⊕                   | HIGH POINT   | HP      |
| SANITARY SEWER MANHOLE       | ⊕                   | LOW POINT  | LP      |
| TELEPHONE MANHOLE            | ⊕                   | CUT LINE   | C       |
| ELECTRIC MANHOLE             | ⊕                   | FILL LINE  | F       |
| TELEPHONE BOX                | ⊕                   | SANITARY SEWER PIPE                                    | — — — — |
| ELECTRIC BOX                 | ⊕                   | SANITARY SEWER MANHOLE                                 | ⊕       |
| CABLE BOX                    | ⊕                   | CURB   | — — — — |
| UTILITY POLE                 | ⊕                   | CONCRETE   | ⊕       |
| GUY WIRE                     | —                   | CONSTRUCTION - ENTRANCE/EXIT                           | ⊕       |
| LIGHT POLE                   | ⊕                   | CHECK DAM  | ⊕       |
| POST OR POLE (TYPE AS NOTED) | ⊕                   | DIVERSION BERM   | ⊕       |
| MAILBOX                      | ⊕                   | DOWNDRAIN STRUCTURE - TEMPORARY                        | ⊕       |
| DECIDUOUS TREE               | ⊕                   | ROCK DAM   | ⊕       |
| EVERGREEN/CONIFEROUS TREE    | ⊕                   | SEDIMENT BARRIER - SILT FENCE                          | ⊕       |
| BUSH                         | ⊕                   | SEDIMENT BARRIER - GRAVEL RING                         | ⊕       |
| PROPERTY LINE                | — — — —             | SEDIMENT BARRIER - BLOCK & GRAVEL                      | ⊕       |
| SETBACK LINE                 | — — — —             | SEDIMENT BARRIER - BLOCK                               | ⊕       |
| EASEMENT LINE                | — — — —             | TEMPORARY SEDIMENT BASIN                               | ⊕       |
| CURB                         | — — — —             | SILT FENCE - TYPE A                                    | ⊕       |
| FENCE                        | — X — X —           | SILT FENCE - TYPE B                                    | ⊕       |
| OVERHEAD UTILITY             | — OHP — OHP —       | SILT FENCE - TYPE C                                    | ⊕       |
| UNDERGROUND TELEPHONE        | — UGT — UGT — UGT — | STORM DRAIN OUTLET PROTECTION                          | ⊕       |
| UNDERGROUND ELECTRIC         | — UGE — UGE — UGE — | SURFACE ROUGHENING                                     | ⊕       |
| WATER LINE                   | — 8"W — 8"W — 8"W — | DISTURBED AREA STABILIZATION - TEMPORARY STABILIZATION | ⊕       |
| SEWER LINE                   | — SAN —             | DISTURBED AREA STABILIZATION - TEMPORARY GRASSING      | ⊕       |
| GAS LINE                     | — GAS — GAS — GAS — | DISTURBED AREA STABILIZATION - PERMANENT GRASSING      | ⊕       |
| STORM SEWER/CULVERT          | — 24" CMP/RCP/DIP — | MATting/BLANKETS                                       | ⊕       |
| CONTOUR LINE                 | — 650 —             |  |         |



SP-SIDEWALK OVER EXPOSED TREE ROOTS  
NTS

REVISIONS	DATE

CITY OF LITTLE ROCK, ARKANSAS  
OAKGROVE LANE SIDEWALKS  
LEGEND, QUANTITIES AND SPECIAL DETAILS

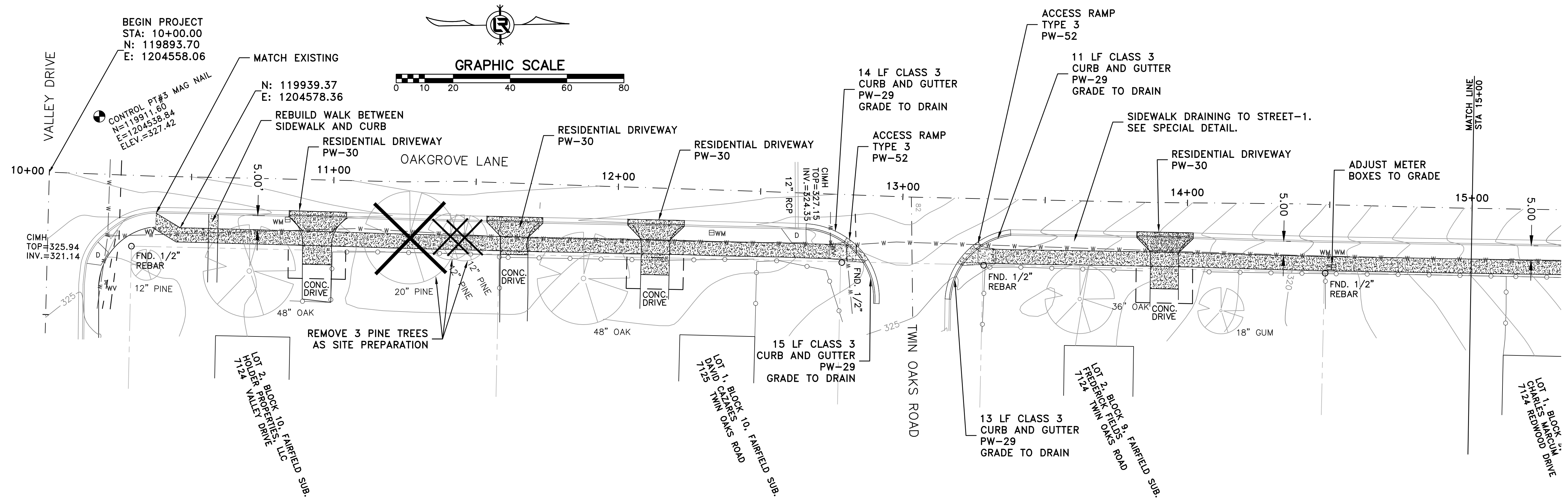
DEPARTMENT OF PUBLIC WORKS  
CIVIL ENGINEERING  
701 W. MARKHAM  
LITTLE ROCK, ARKANSAS 72201



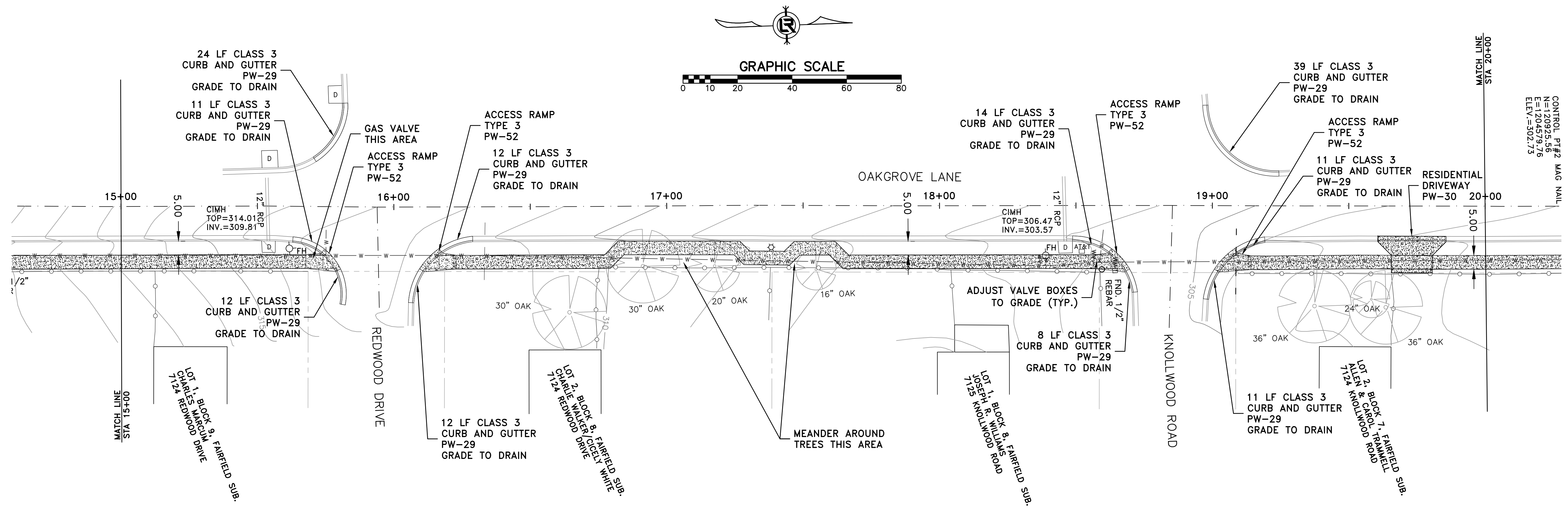
DRAWN BY  
KMH  
DESIGNED  
KMH  
CHECKED  
FJS  
DATE  
6-28-19  
SCALE  
N.T.S.  
PROJECT NO.  
02-15-SW-81  
SHEET NO.  
C2



REVISIONS	DATE



CITY OF LITTLE ROCK, ARKANSAS  
**OAKGROVE LANE SIDEWALKS**  
 PLAN  
 STA 10+00 TO 20+00

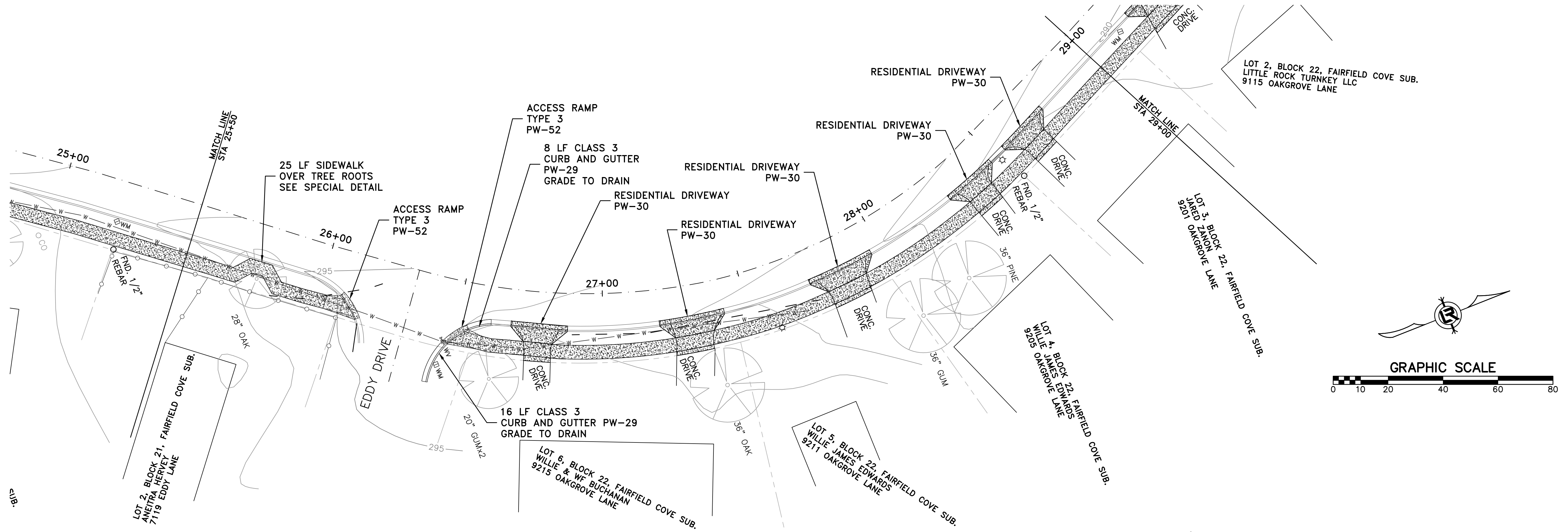
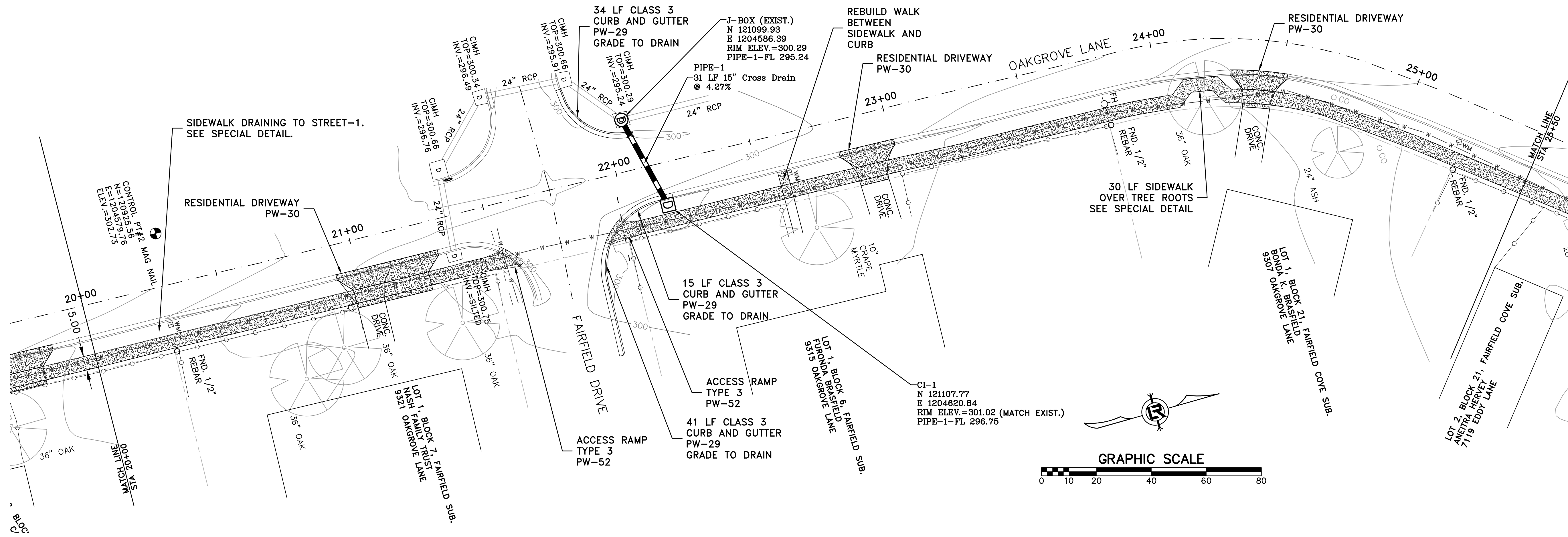


DEPARTMENT OF PUBLIC WORKS  
 CIVIL ENGINEERING  
 701 W. MARKHAM  
 LITTLE ROCK, ARKANSAS 72201



**DRAWN BY**  
 KMH  
**DESIGNED**  
 KMH  
**CHECKED**  
 FJS  
**DATE**  
 6-28-19  
**SCALE**  
 1" = 20'  
**PROJECT NO.**  
 02-15-SW-81  
**SHEET NO.**  
 C3





REVISIONS	DATE

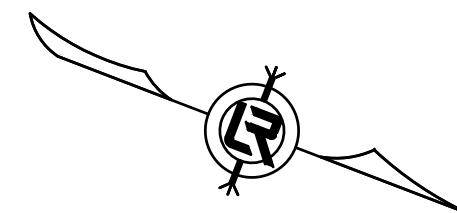
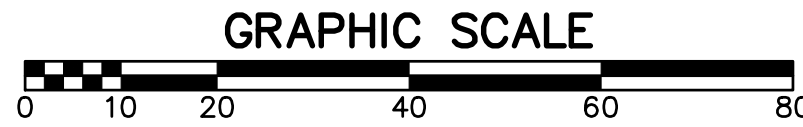
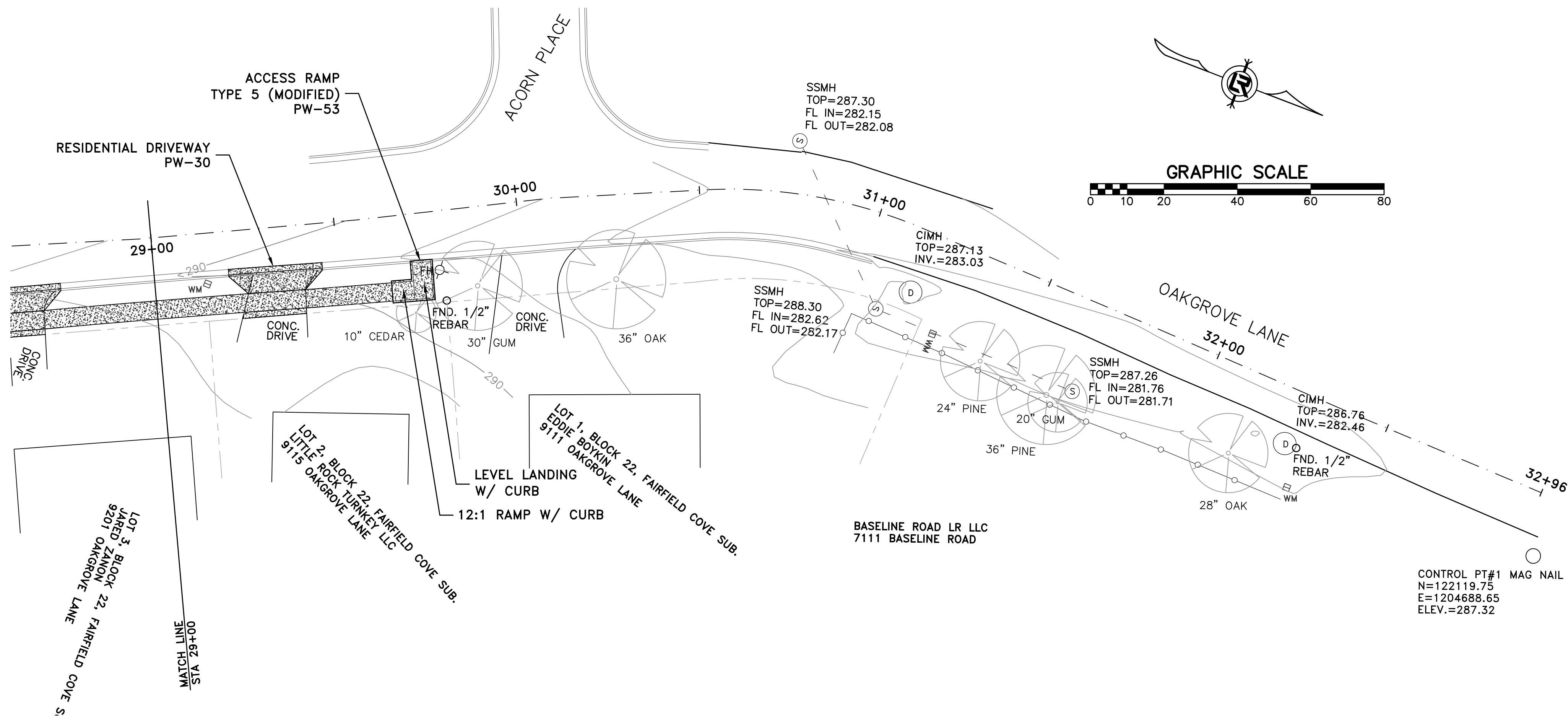
CITY OF LITTLE ROCK, ARKANSAS  
OAKGROVE LANE SIDEWALKS  
PLAN  
STA 20+00 TO 29+00

DEPARTMENT OF PUBLIC WORKS  
CIVIL ENGINEERING  
701 W. MARKHAM  
LITTLE ROCK, ARKANSAS 72201



DRAWN BY KMH
DESIGNED KMH
CHECKED FJS
DATE 6-28-19
SCALE 1" = 20'
PROJECT NO. 02-15-SW-81
SHEET NO. C4





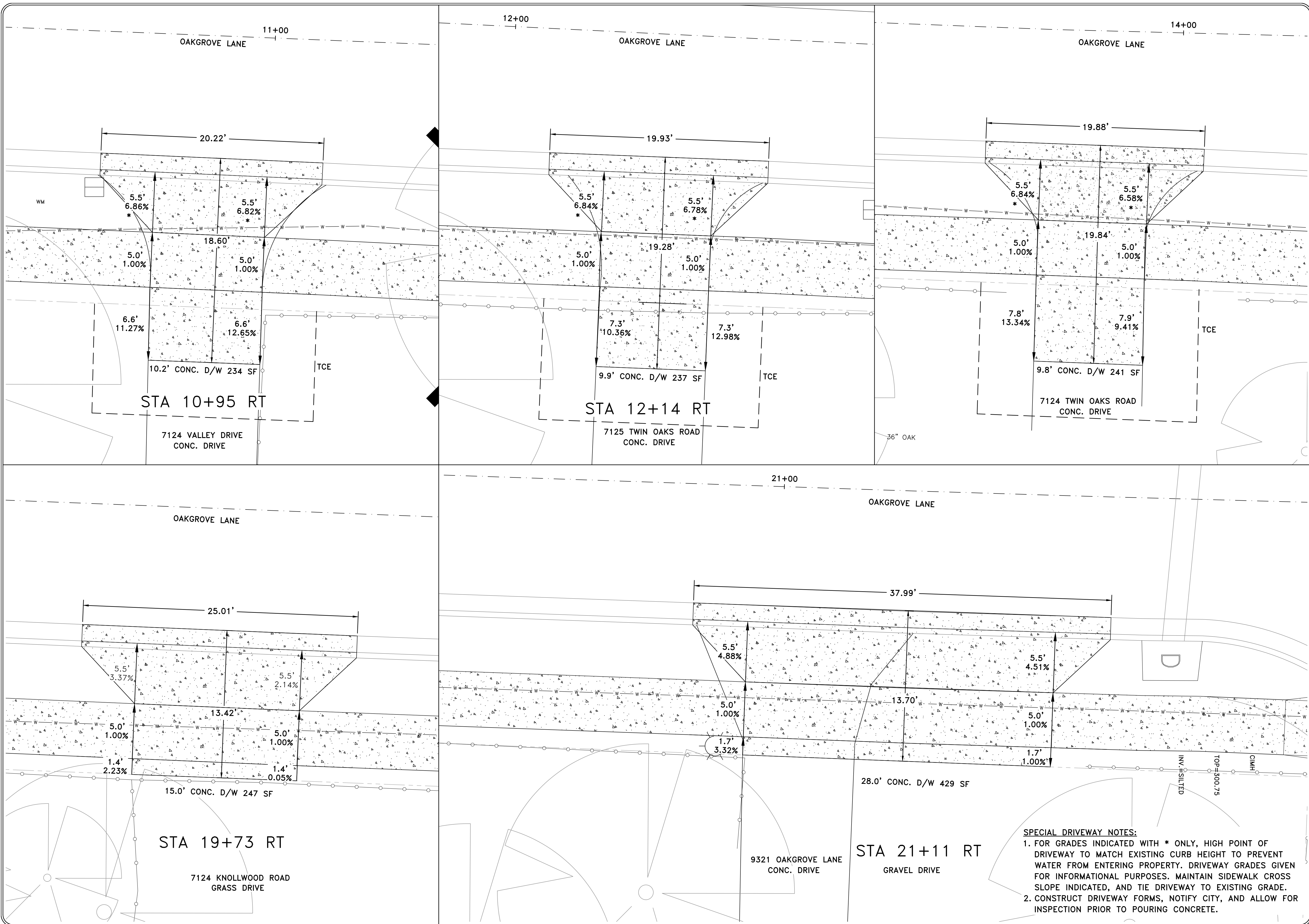
REVISIONS	DATE

CITY OF LITTLE ROCK, ARKANSAS  
**OAKGROVE LANE SIDEWALKS**  
 PLAN  
 STA 29+00 TO 32+96

DEPARTMENT OF PUBLIC WORKS  
 CIVIL ENGINEERING  
 701 W. MARKHAM  
 LITTLE ROCK, ARKANSAS 72201



**DRAWN BY**  
 KMH  
**DESIGNED**  
 KMH  
**CHECKED**  
 FJS  
**DATE**  
 6-28-19  
**SCALE**  
 1" = 20'  
**PROJECT NO.**  
 02-15-SW-81  
**SHEET NO.**  
 C5



REVISIONS	DATE

CITY OF LITTLE ROCK, ARKANSAS  
 OAKGROVE LANE SIDEWALKS  
 DRIVEWAY PROFILES 1

DEPARTMENT OF PUBLIC WORKS  
 CIVIL ENGINEERING  
 701 W. MARKHAM  
 LITTLE ROCK, ARKANSAS 72201



DRAWN BY KMH
DESIGNED KMH
CHECKED FJS
DATE 6-28-19
SCALE 1" = 5'
PROJECT NO. 02-15-SW-81
SHEET NO. C6

**SPECIAL DRIVEWAY NOTES:**  
 1. FOR GRADES INDICATED WITH \* ONLY, HIGH POINT OF DRIVEWAY TO MATCH EXISTING CURB HEIGHT TO PREVENT WATER FROM ENTERING PROPERTY. DRIVEWAY GRADES GIVEN FOR INFORMATIONAL PURPOSES. MAINTAIN SIDEWALK CROSS SLOPE INDICATED, AND TIE DRIVEWAY TO EXISTING GRADE.  
 2. CONSTRUCT DRIVEWAY FORMS, NOTIFY CITY, AND ALLOW FOR INSPECTION PRIOR TO POURING CONCRETE.



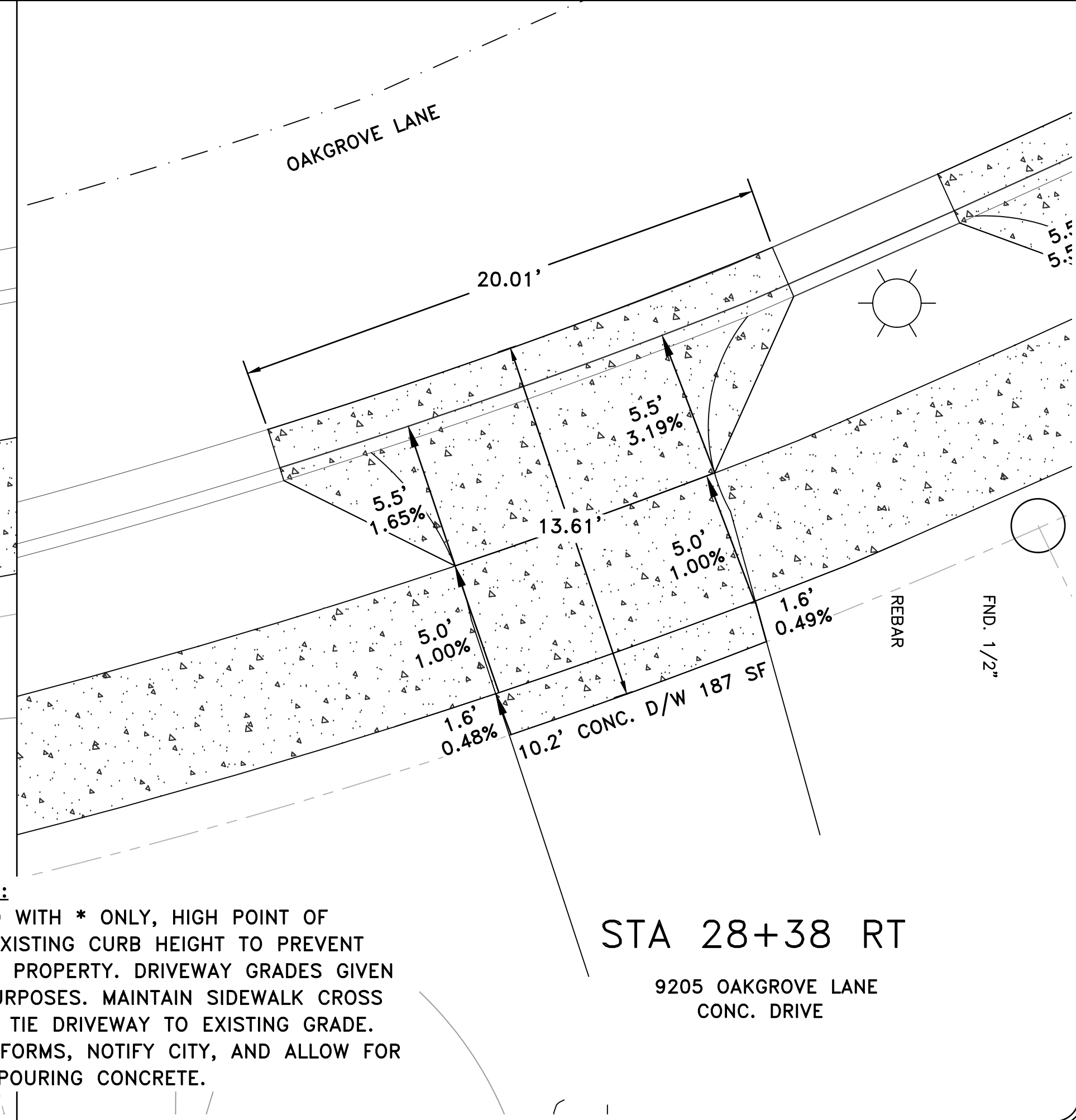
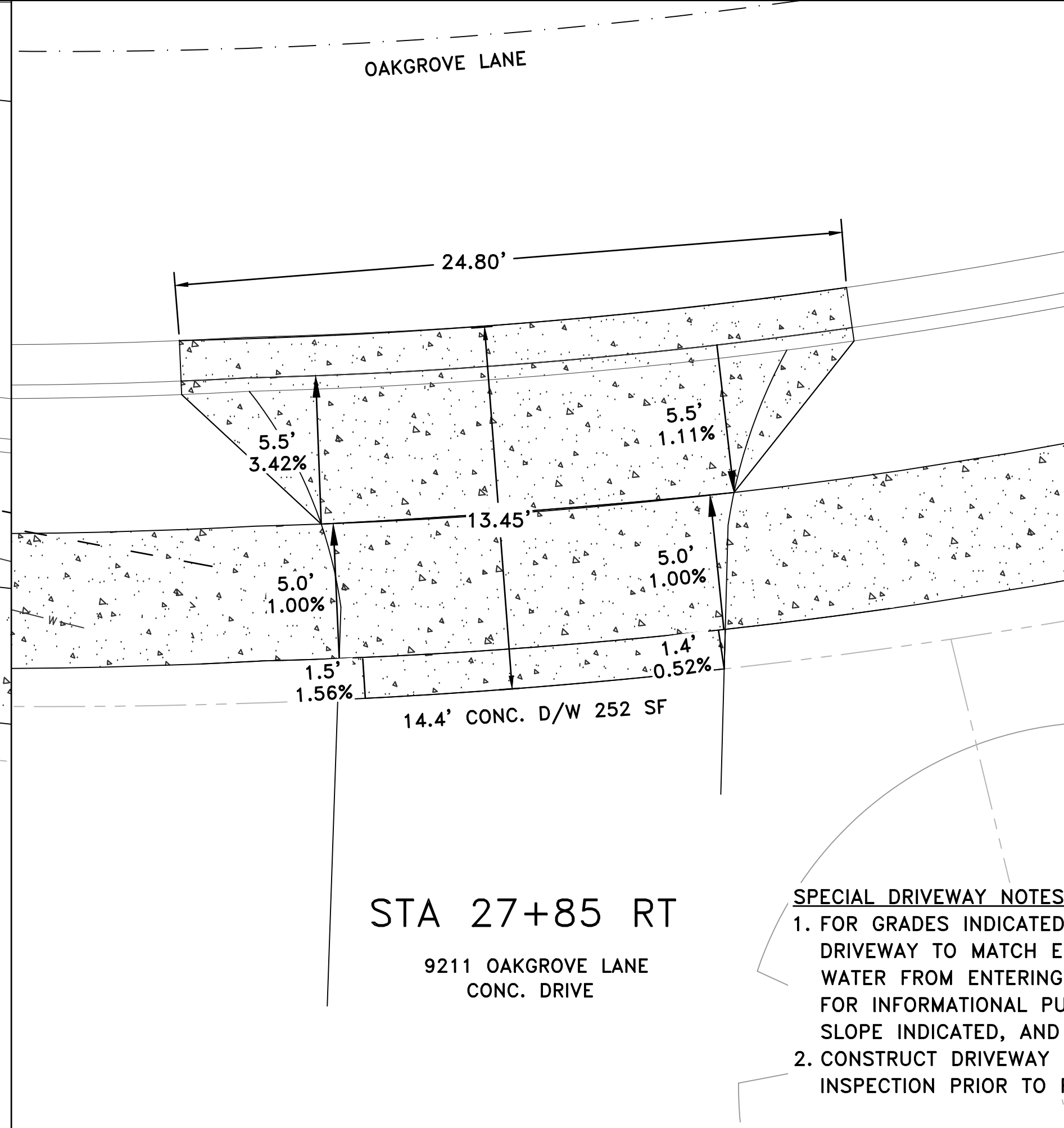
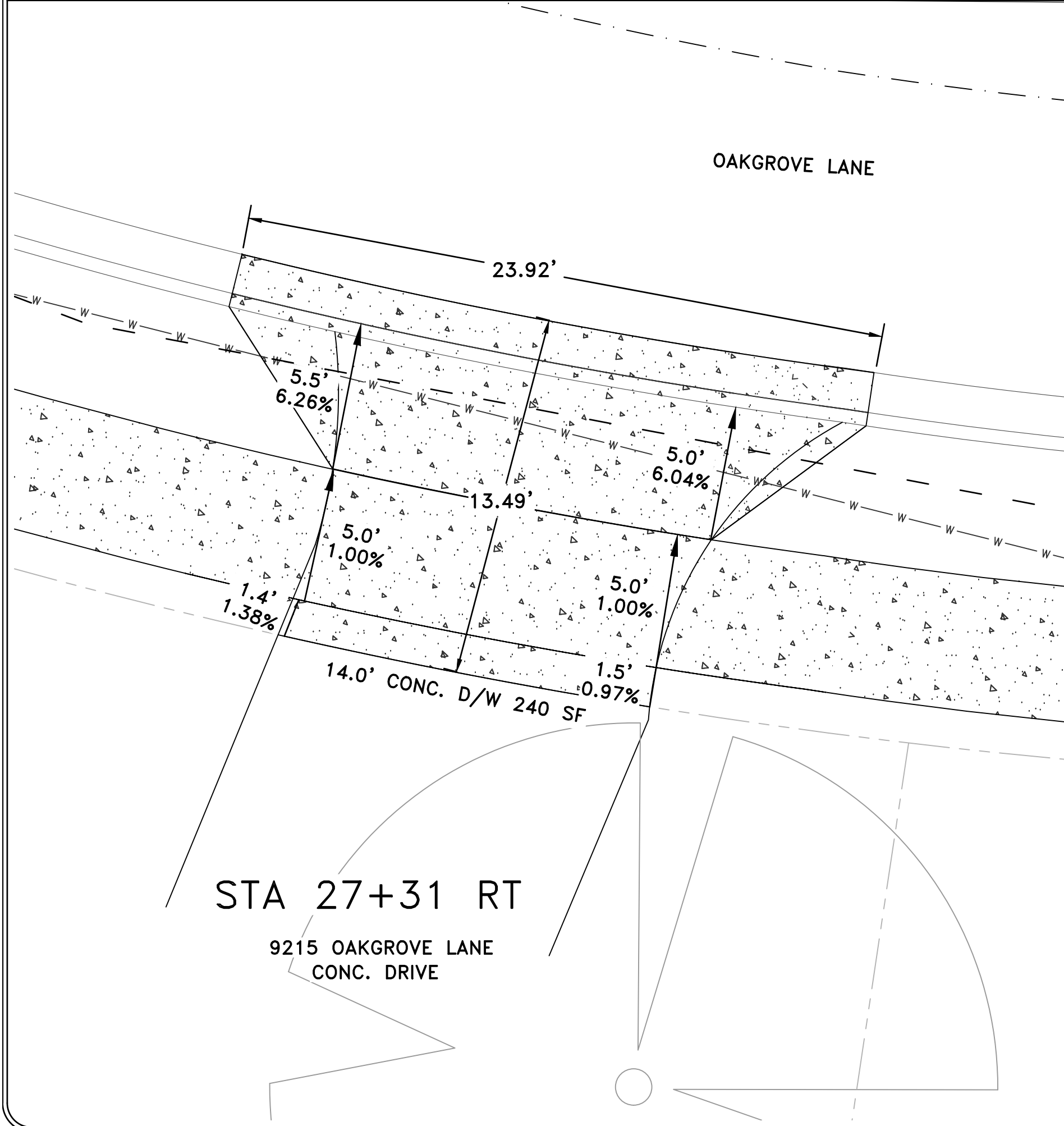
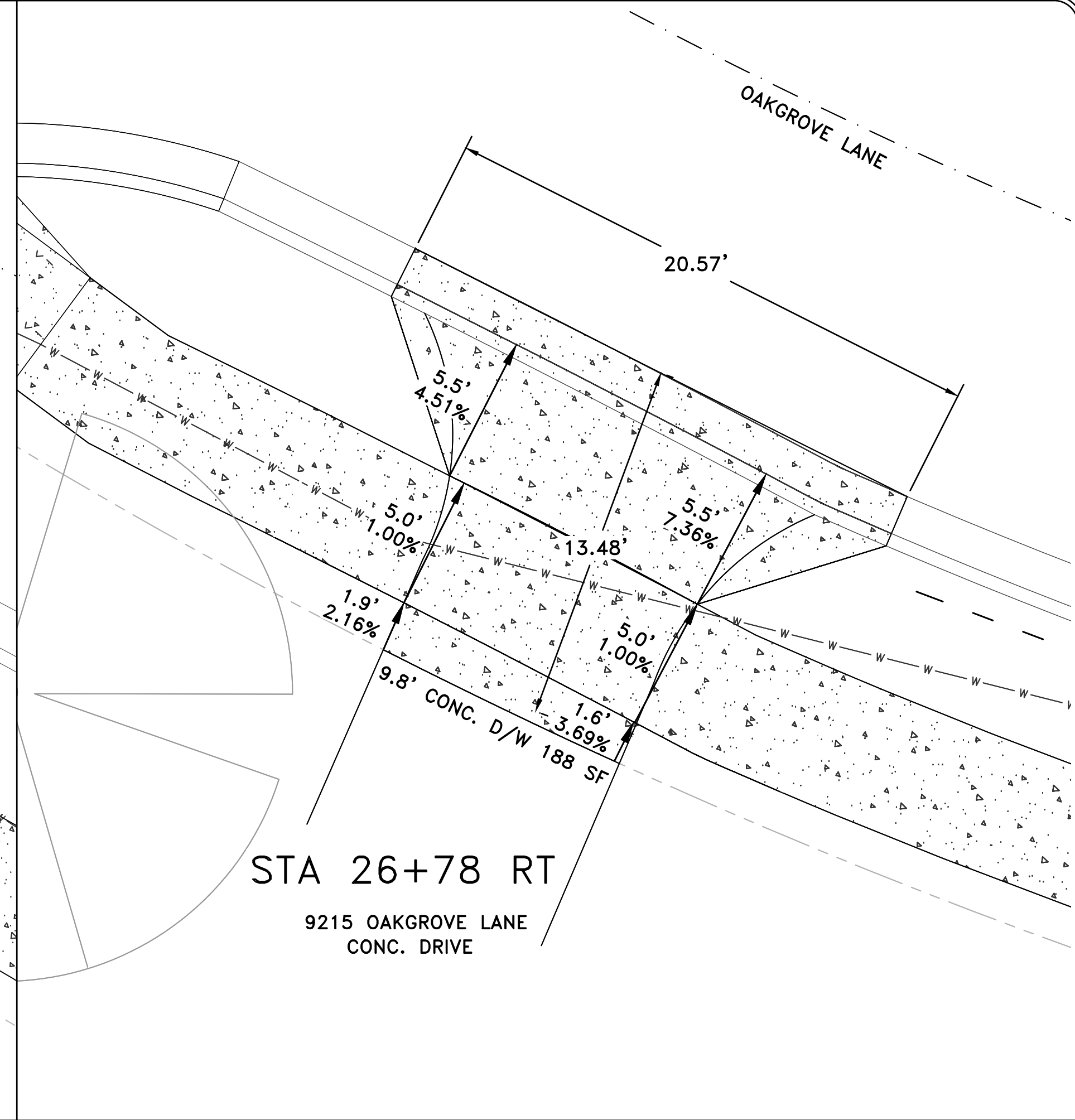
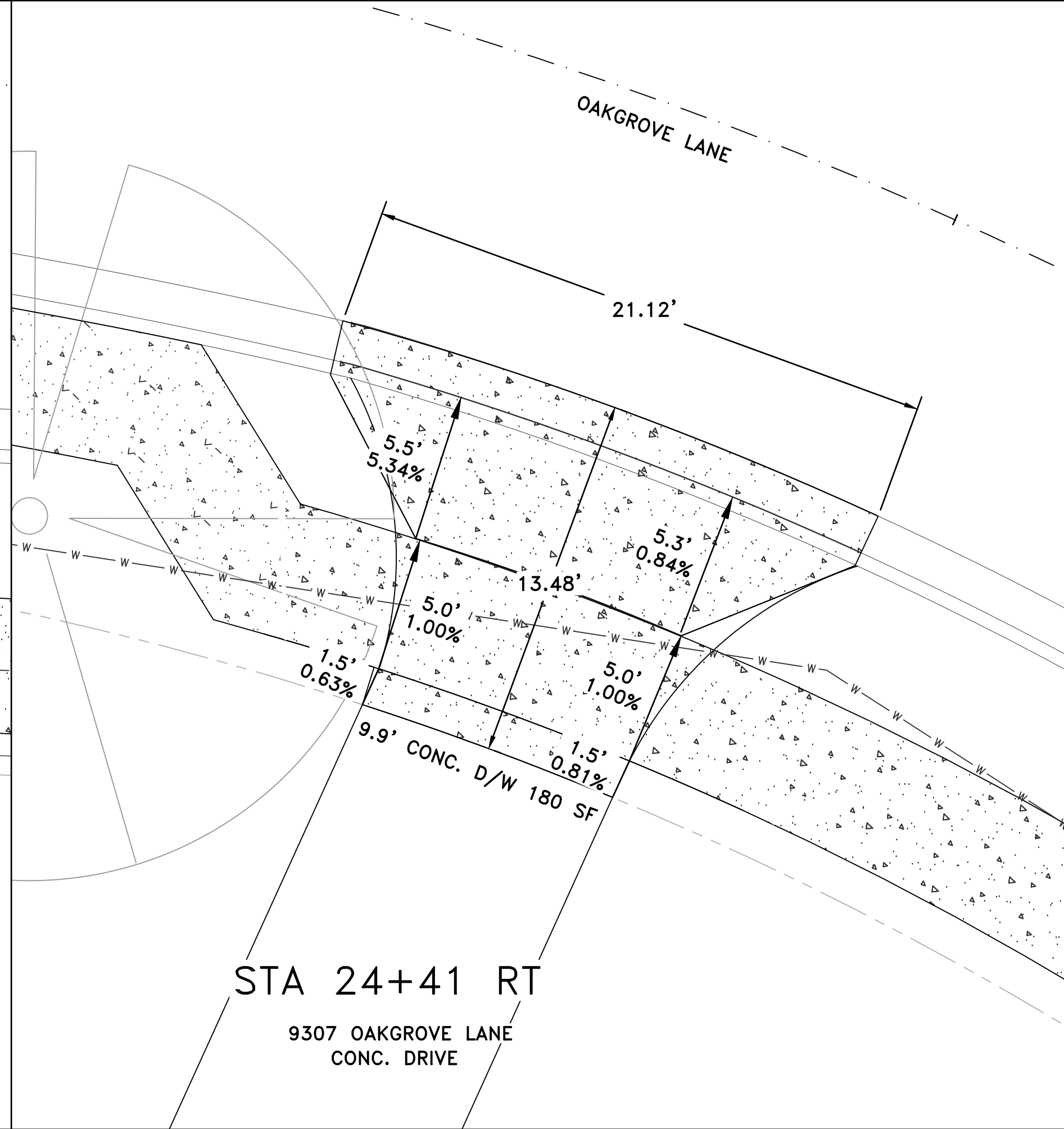
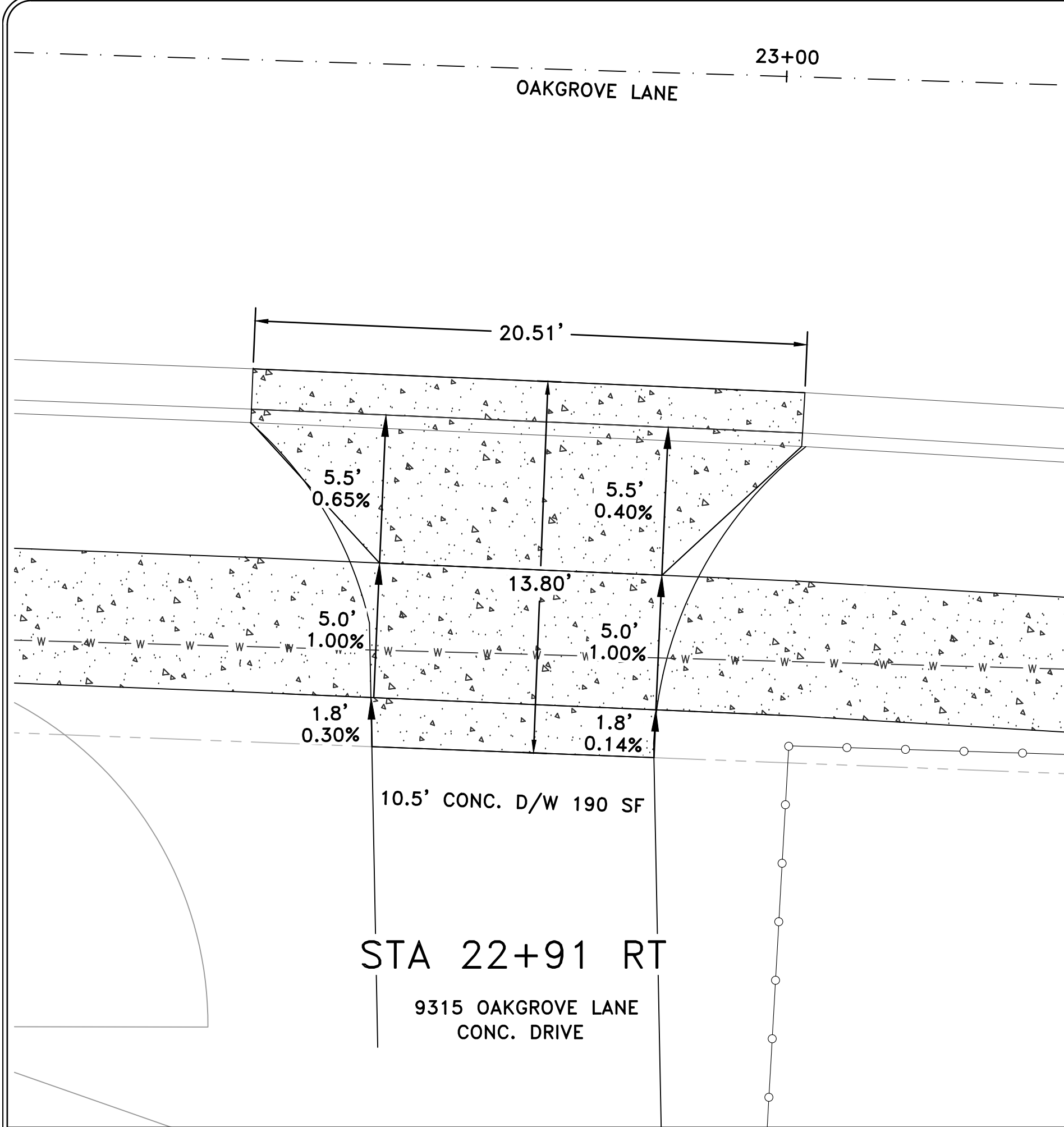
REVISIONS	DATE

CITY OF LITTLE ROCK, ARKANSAS  
OAKGROVE LANE SIDEWALKS  
DRIVEWAY PROFILES 2

DEPARTMENT OF PUBLIC WORKS  
CIVIL ENGINEERING  
701 W. MARKHAM  
LITTLE ROCK, ARKANSAS 72201

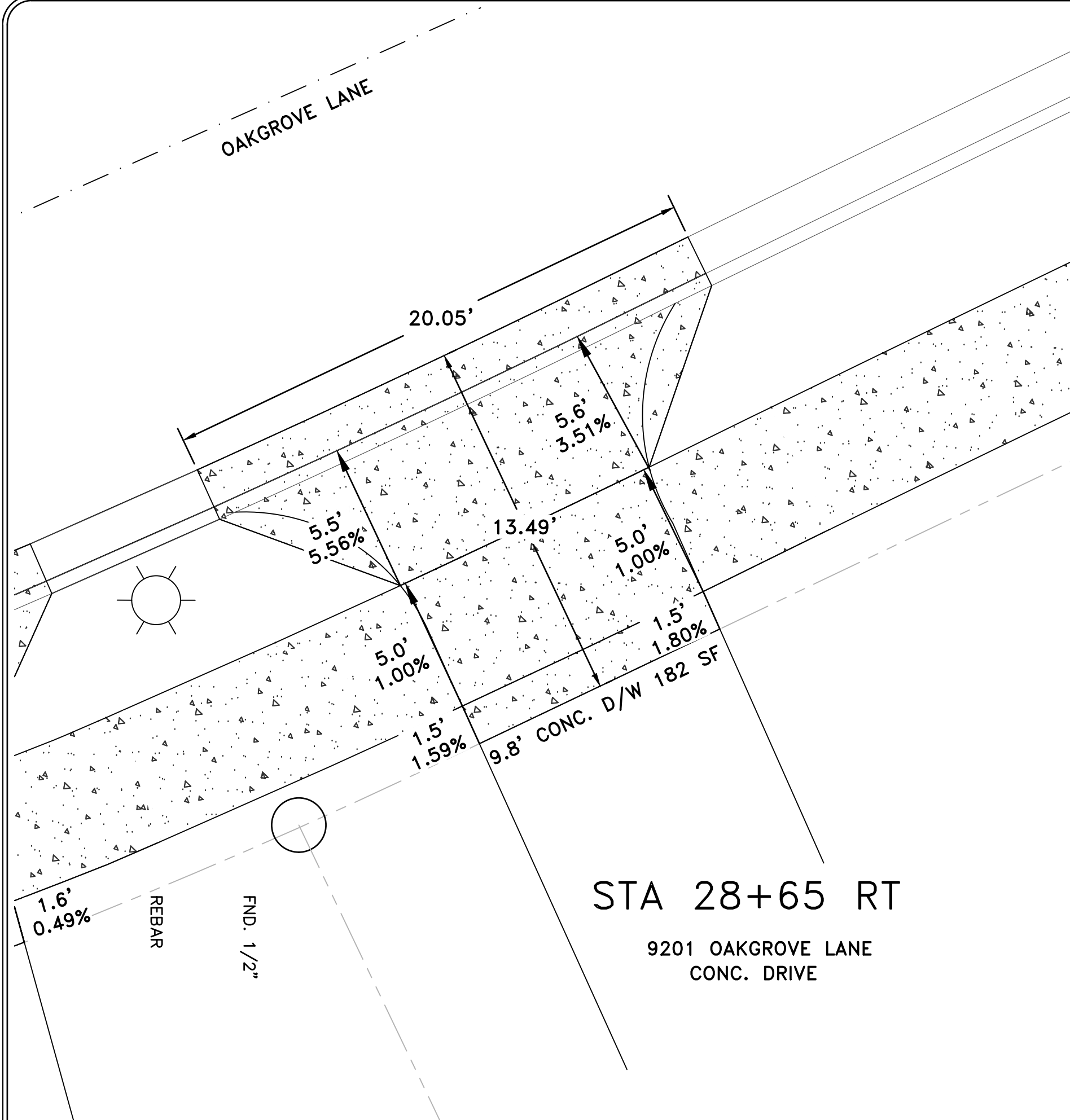


DRAWN BY  
**KMH**  
DESIGNED  
**KMH**  
CHECKED  
**FJS**  
DATE  
**6-28-19**  
SCALE  
**1" = 5'**  
PROJECT NO.  
**02-15-SW-81**  
SHEET NO.  
**C7**

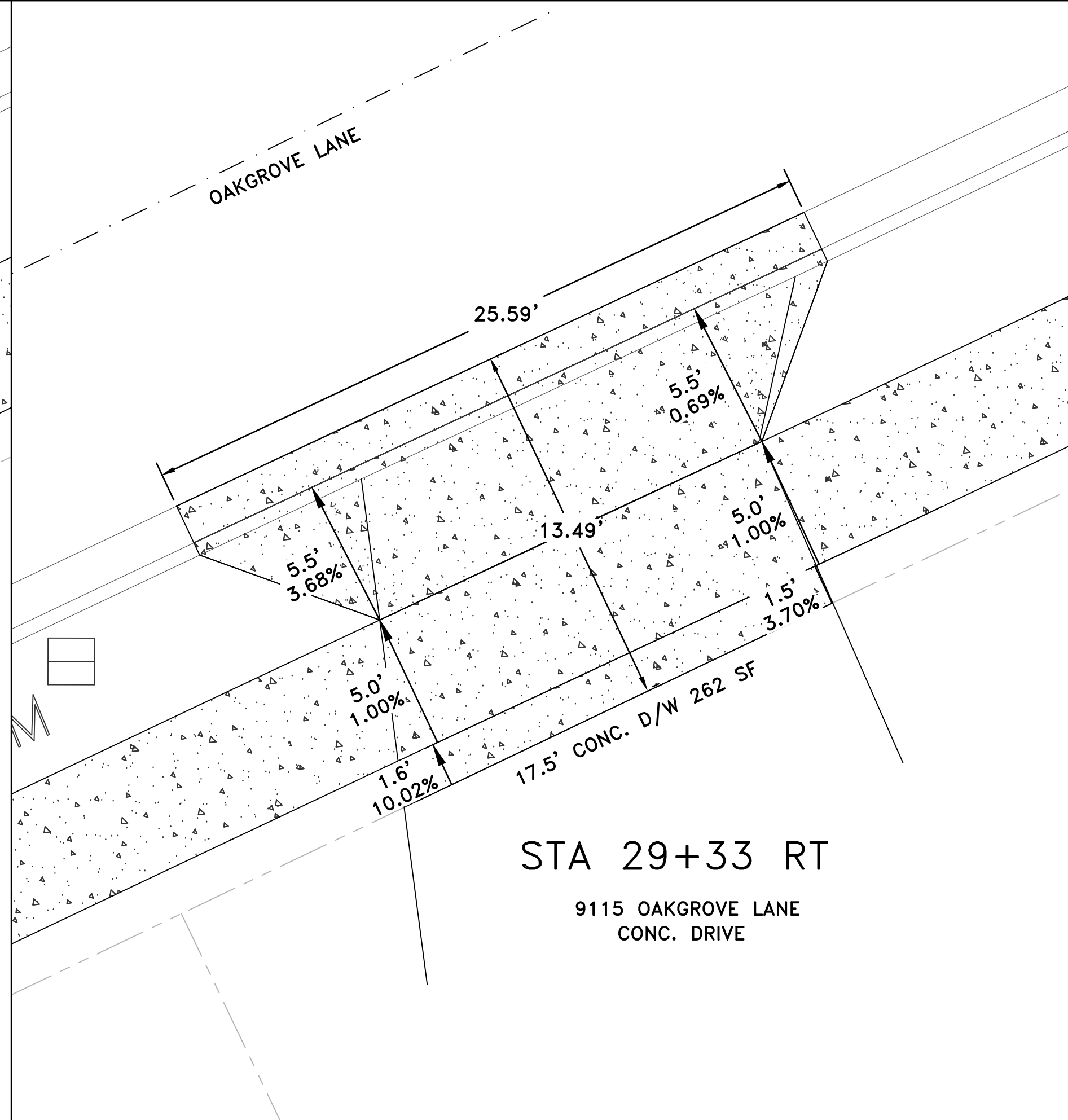


**SPECIAL DRIVEWAY NOTES:**  
1. FOR GRADES INDICATED WITH \* ONLY, HIGH POINT OF DRIVEWAY TO MATCH EXISTING CURB HEIGHT TO PREVENT WATER FROM ENTERING PROPERTY. DRIVEWAY GRADES GIVEN FOR INFORMATIONAL PURPOSES. MAINTAIN SIDEWALK CROSS SLOPE INDICATED, AND TIE DRIVEWAY TO EXISTING GRADE.  
2. CONSTRUCT DRIVEWAY FORMS, NOTIFY CITY, AND ALLOW FOR INSPECTION PRIOR TO POURING CONCRETE.

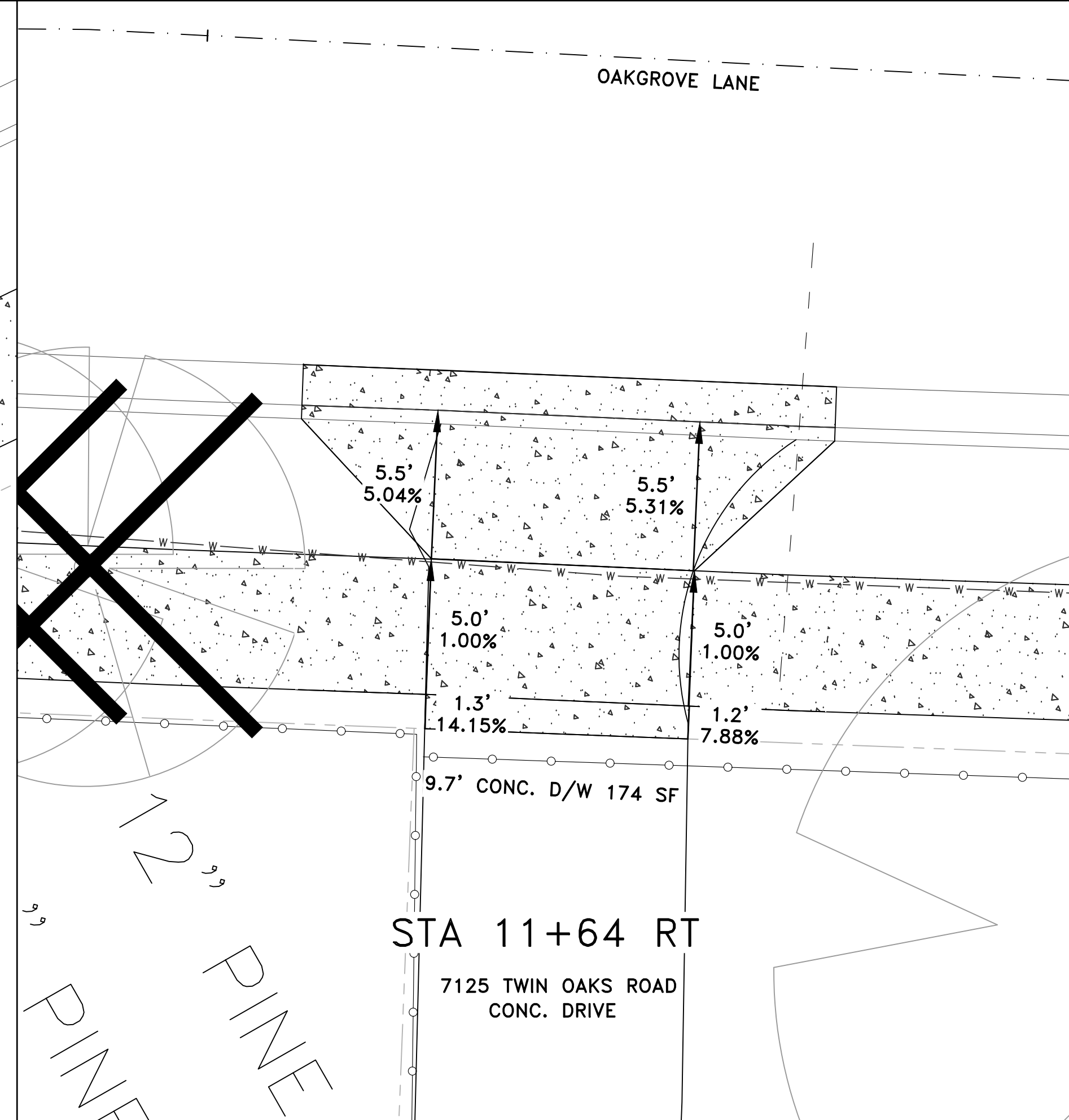




STA 28+65 RT  
9201 OAKGROVE LANE  
CONC. DRIVE



STA 29+33 RT  
9115 OAKGROVE LANE  
CONC. DRIVE



STA 11+64 RT  
7125 TWIN OAKS ROAD  
CONC. DRIVE

REVISIONS	DATE

CITY OF LITTLE ROCK, ARKANSAS  
OAKGROVE LANE SIDEWALKS  
DRIVEWAY PROFILES 3

DEPARTMENT OF PUBLIC WORKS  
CIVIL ENGINEERING  
701 W. MARKHAM  
LITTLE ROCK, ARKANSAS 72201



DRAWN BY  
KMH  
DESIGNED  
KMH  
CHECKED  
FJS  
DATE  
6-28-19  
SCALE  
1" = 5'  
PROJECT NO.  
02-15-SW-81  
SHEET NO.  
C8

**SPECIAL DRIVEWAY NOTES:**  
1. FOR GRADES INDICATED WITH \* ONLY, HIGH POINT OF DRIVEWAY TO MATCH EXISTING CURB HEIGHT TO PREVENT WATER FROM ENTERING PROPERTY. DRIVEWAY GRADES GIVEN FOR INFORMATIONAL PURPOSES. MAINTAIN SIDEWALK CROSS SLOPE INDICATED, AND TIE DRIVEWAY TO EXISTING GRADE.  
2. CONSTRUCT DRIVEWAY FORMS, NOTIFY CITY, AND ALLOW FOR INSPECTION PRIOR TO POURING CONCRETE.