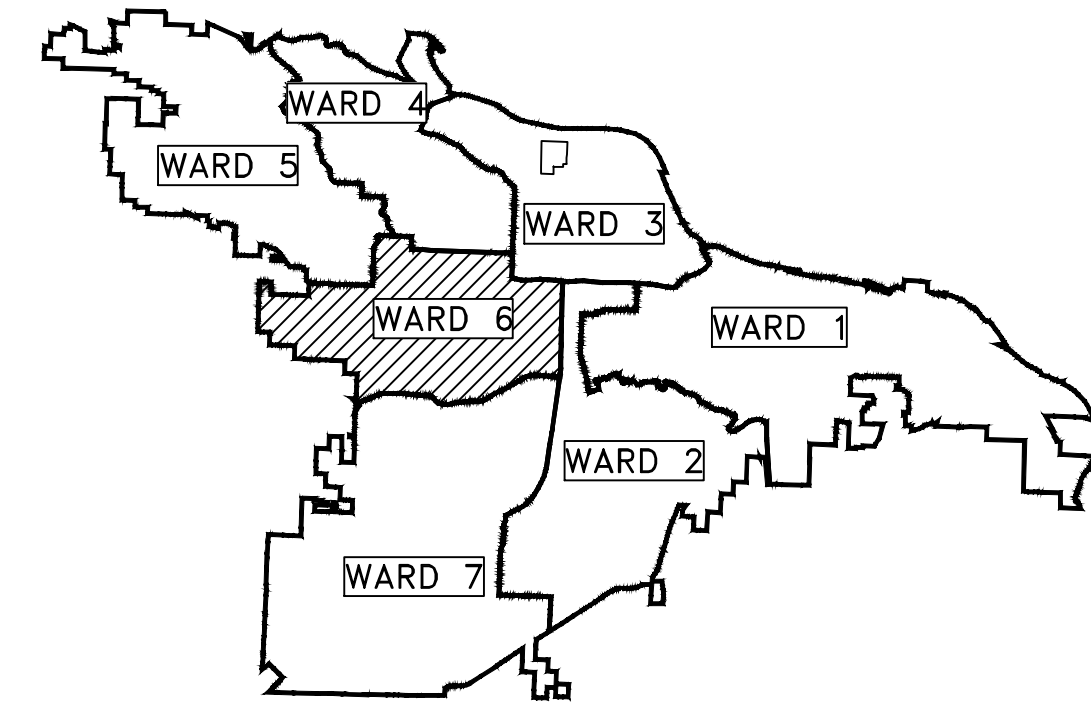


CLR PROJECT 03-17-ST-163

SHANNON DRIVE

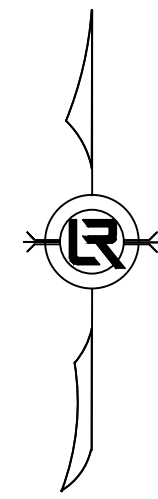
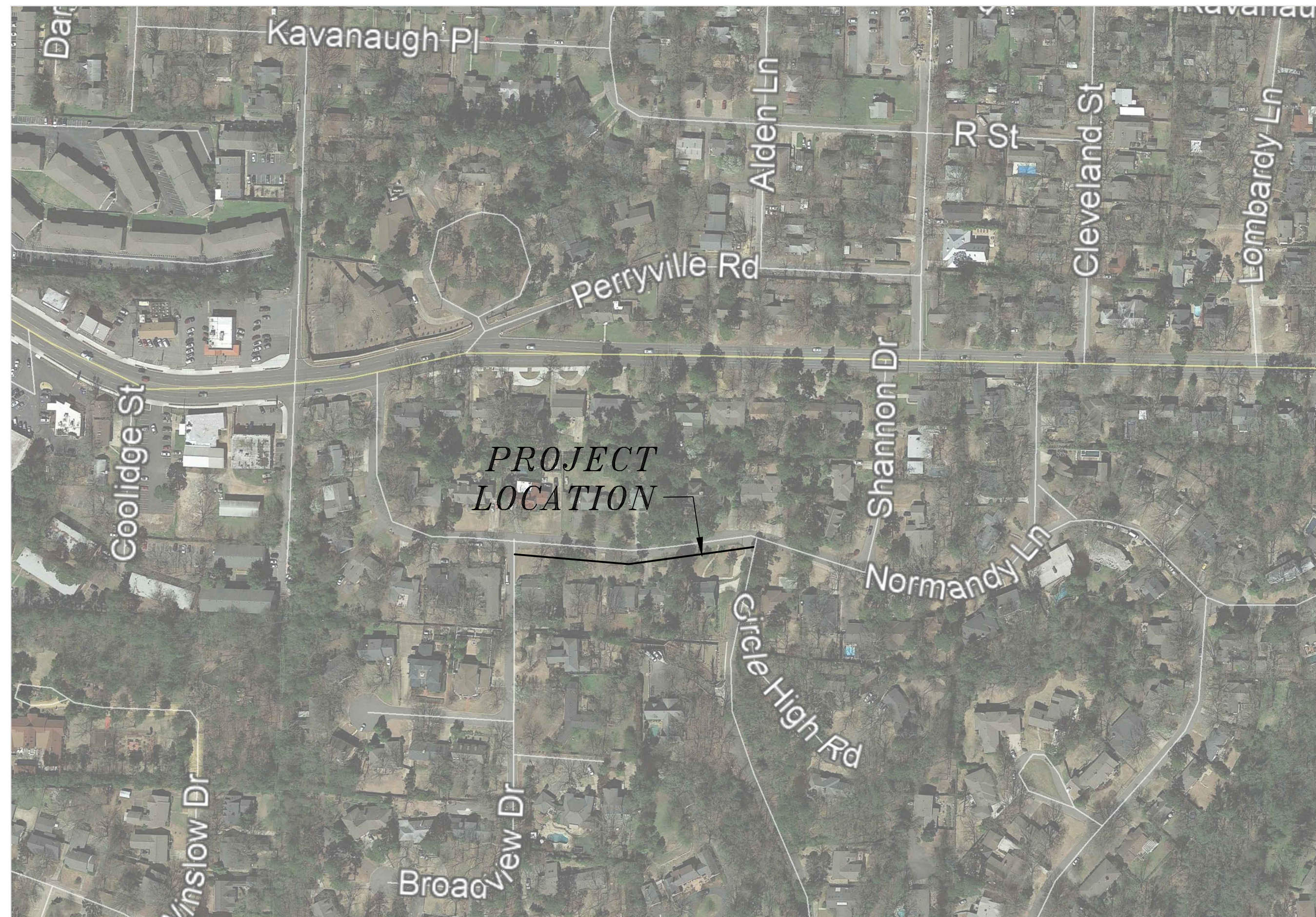
DRAINAGE IMPROVEMENTS

LITTLE ROCK, ARKANSAS



PROJECT LOCATION – WARD 6

SHEET NO.	TITLE
C1	COVER SHEET
C2	GENERAL NOTES, LEGEND AND QUANTITIES
C3	LAYOUT
C4	PROPOSED
C5	EROSION CONTROL
C6	DETAILS
C7	DRIVEWAY DETAILS



2019-2021
BOND PROGRAM

DEPARTMENT OF PUBLIC WORKS
CIVIL ENGINEERING
701 WEST MARKHAM STREET
LITTLE ROCK, ARKANSAS 72201



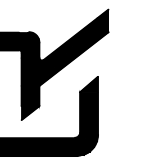
HR 320 Executive Court
Suite 304
Little Rock, AR 72205
501.907.7153

REVISIONS	DATE

CITY OF LITTLE ROCK, ARKANSAS
SHANNON DR. DRAINAGE IMPROVEMENTS

COVER SHEET

DEPARTMENT OF PUBLIC WORKS
CIVIL ENGINEERING
701 W. MARKHAM
LITTLE ROCK, ARKANSAS 72201



SEAL

DRAWN BY

DESIGNED
JRH
CHECKED
JRH
DATE
1/15/19
SCALE
NTS

PROJECT NO.
03-17-ST-163
SHEET NO.

C1

REVISIONS	DATE

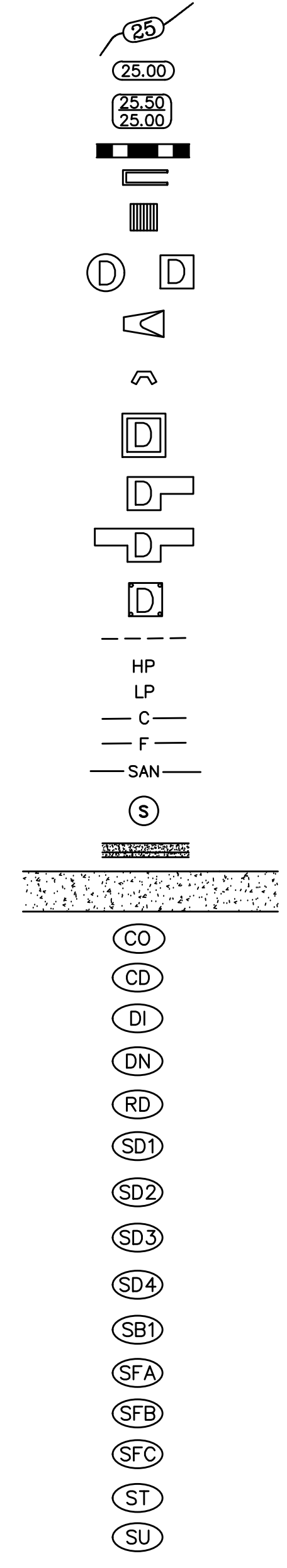
ESTIMATED QUANTITIES			
CLR PROJECT 03-17-ST-163			
SHANNON DRIVE RECONSTRUCTION			
16-Sep-19			
ITEM #	ITEM DESCRIPTION	UNIT	QUANTITY
2.01	SITE PREPARATION	LS	1
3.01	UNCLASSIFIED EXCAVATION	CY	100
3.06	BORROW MATERIAL	CY	95
7.06	CONCRETE DRIVEWAY (6" THICK), STANDARD FINISH	SF	744
8.03	CONCRETE CURB AND GUTTER (CLASS 3)	LF	382
10.01	JUNCTION BOX	EA	1
10.05	CURB INLET - 5' BOX	EA	1
10.10	WING 3' EXTENSION	EA	1
13.18P	STORM DRAIN PIPE, SIDE DRAIN	LF	20
14.01	SOLID SODDING, BERMUDA	SY	750
16.01	MAINTENANCE OF TRAFFIC	LS	1
17.01	PAVEMENT REPAIRS	SY	225
19.10	CLEANUP	LS	1
24.11	SILT FENCE - TYPE A (SFA)	LF	500
24.22	INLET SEDIMENT TRAP (SB-1)	EA	2

EXISTING

- IRON ROD ○ IR
- PK NAIL ○ PK
- R.R. SPIKE ○ RR(Sp)
- CONC. MONUMENT □ CM
- WATER VALVE ✕ WV
- WATER METER □ WM
- FIRE HYDRANT ∅ FH
- GAS METER □ GM
- GAS VALVE ⊗ GV
- CLEAN-OUT ○ CO
- GUARD POST (BOLLARD) ● GP
- SIGN POST
- BENCHMARK
- STORM SEWER MANHOLE (D)
- SANITARY SEWER MANHOLE (S)
- TELEPHONE MANHOLE (T)
- ELECTRIC MANHOLE (E)
- TELEPHONE BOX
- ELECTRIC BOX
- CABLE BOX
- UTILITY POLE
- GUY WIRE
- LIGHT POLE
- POST OR POLE (TYPE AS NOTED)
- MAILBOX
- DECIDUOUS TREE
- EVERGREEN/CONIFEROUS TREE
- BUSH
- PROPERTY LINE
- SETBACK LINE
- EASEMENT LINE
- CURB
- FENCE
- OVERHEAD ELECTRIC
- OVERHEAD TELEPHONE
- OVERHEAD CABLE
- UNDERGROUND TELEPHONE
- UNDERGROUND ELECTRIC
- UNDERGROUND CABLE
- WATER LINE
- SEWER LINE
- GAS LINE
- STORM SEWER/CULVERT
- EDGE OF WOODS
- CONTOUR LINE

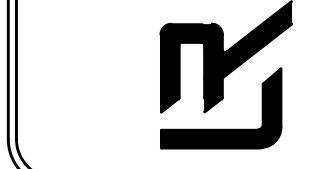
PROPOSED

- PROPOSED CONTOUR
- PROPOSED SPOT ELEVATION
- PROPOSED SPOT CURB ELEVATION
- STORM SEWER - PIPE
- STORM SEWER - MITERED END SECTION
- STORM SEWER - GRATE INLET
- STORM SEWER - JUNCTION BOX
- STORM SEWER - FLARED END SECTION
- STORM SEWER - HEADWALL
- STORM SEWER - NO WING
- STORM SEWER - SINGLE WING
- STORM SEWER - DOUBLE WING
- STORM SEWER - AREA INLET
- GRADE BREAK LINE
- HIGH POINT
- LOW POINT
- CUT LINE
- FILL LINE
- SANITARY SEWER PIPE
- SANITARY SEWER MANHOLE
- PROPOSED CURB
- PROPOSED CONCRETE
- CONSTRUCTION - ENTRANCE/EXIT
- CHECK DAM
- DIVERSION BERM
- DOWNDRAIN STRUCTURE - TEMPORARY
- ROCK DAM
- SEDIMENT BARRIER - SILT FENCE
- SEDIMENT BARRIER - GRAVEL RING
- SEDIMENT BARRIER - BLOCK & GRAVEL
- SEDIMENT BARRIER - BLOCK
- TEMPORARY SEDIMENT BASIN
- SILT FENCE - TYPE A
- SILT FENCE - TYPE B
- SILT FENCE - TYPE C
- STORM DRAIN OUTLET PROTECTION
- SURFACE ROUGHENING
- DISTURBED AREA STABILIZATION -TEMPORARY STABILIZATION
- DISTURBED AREA STABILIZATION -TEMPORARY GRASSING
- DISTURBED AREA STABILIZATION -PERMANENT GRASSING
- MATTING/BLANKETS



CITY OF LITTLE ROCK, ARKANSAS
SHANNON DR. DRAINAGE IMPROVEMENTS
GENERAL NOTES, LEGEND AND QUANTITIES

DEPARTMENT OF PUBLIC WORKS
CIVIL ENGINEERING
701 W. MARKHAM
LITTLE ROCK, ARKANSAS 72201

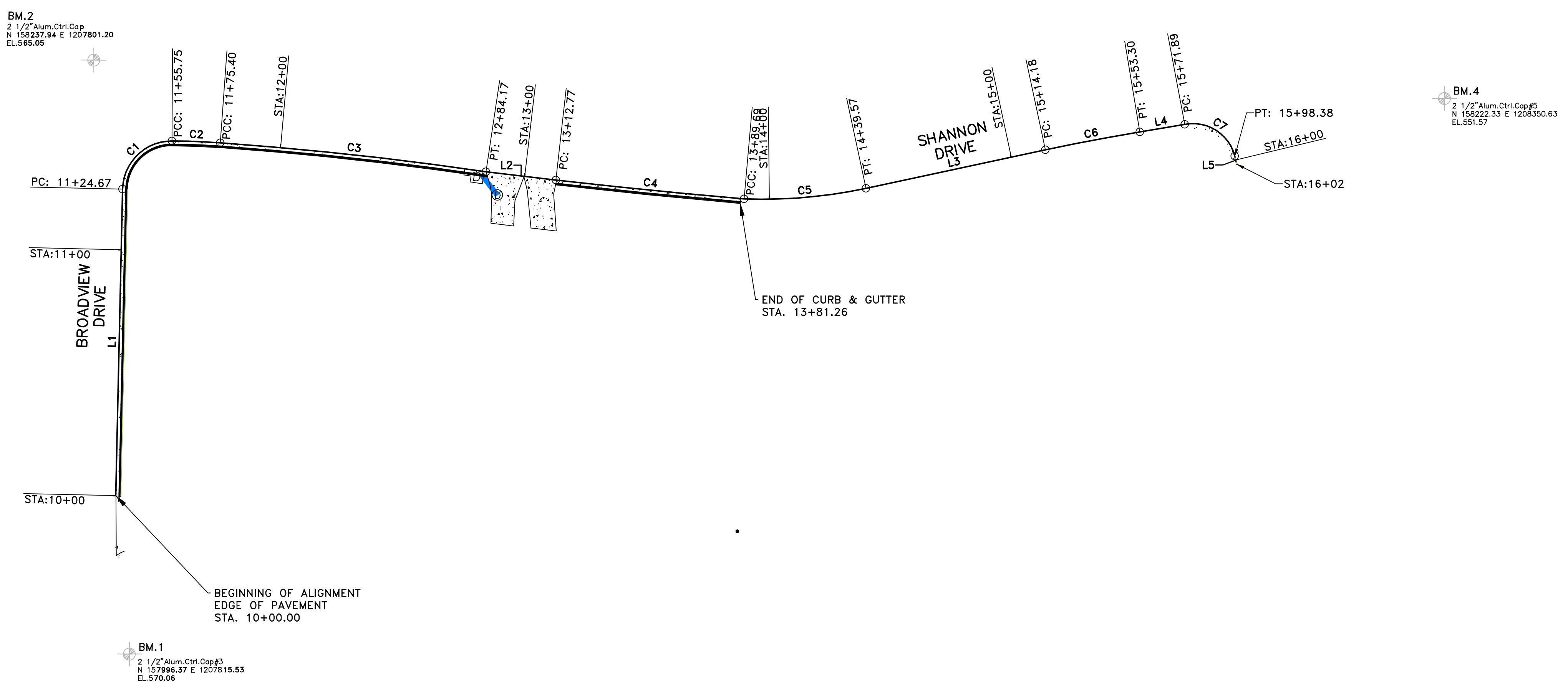


DRAWN BY
DESIGNED JRH
CHECKED JRH
DATE 1/15/19
SCALE NTS
PROJECT NO. 03-17-ST-163
SHEET NO. C2

C:\working\0317163\ST\SHANNON DR. PLANS_V.E.dwg, LEGEND, 3/20/2019 11:12:21 AM, LUGRTHFO

REVISIONS	DATE

CITY OF LITTLE ROCK, ARKANSAS
SHANNON DR. DRAINAGE IMPROVEMENTS
 LAYOUT

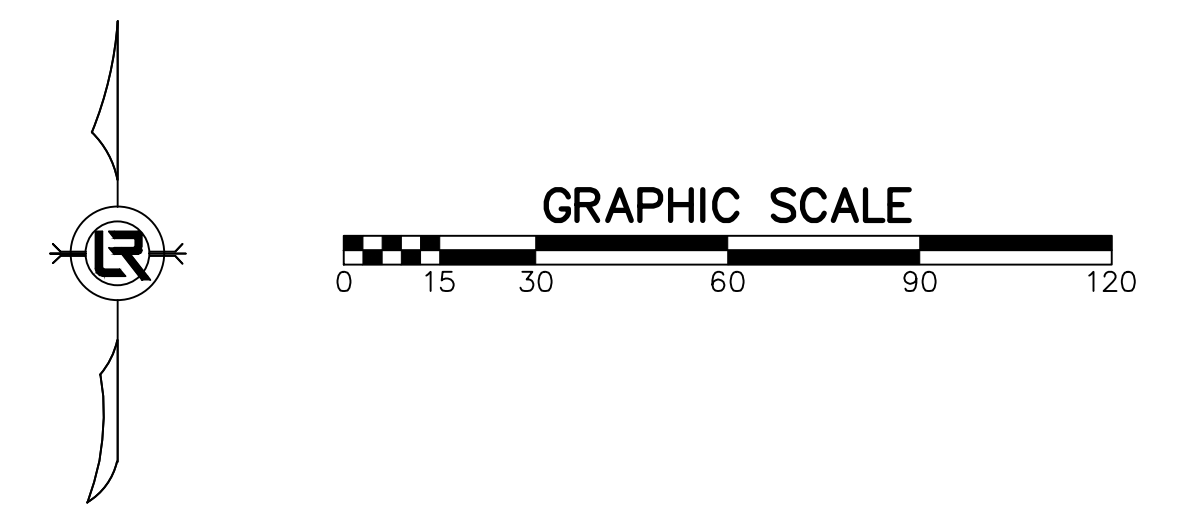


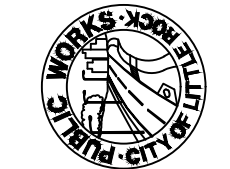
Line Table: Alignments

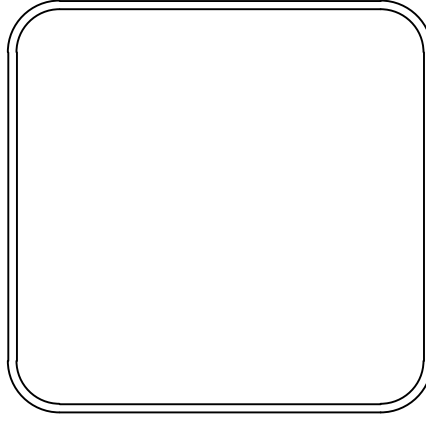
Line #	Length	Direction	Start Point	End Point
L1	124.669	N1° 16' 13.80"E	(1207810.1720,158060.8730)	(1207812.9362,158185.5116)
L2	28.600	S83° 20' 17.88"E	(1207960.7670,158192.4984)	(1207989.1741,158189.1805)
L3	74.610	N77° 55' 02.16"E	(1208115.2853,158185.8055)	(1208188.2425,158201.4232)
L4	18.596	N80° 31' 52.32"E	(1208226.6599,158208.7348)	(1208245.0020,158211.7940)
L5	3.412	S13° 31' 27.06"E	(1208265.3202,158198.9166)	(1208266.1182,158195.5990)

Curve Table: Alignments

Curve #	Radius	Length	Chord Direction	Start Point	End Point
C1	20.000	31.084	N45° 47' 41.76"E	(1207812.9362,158185.5116)	(1207833.0428,158205.0678)
C2	300.784	19.646	S87° 48' 34.07"E	(1207833.0428,158205.0678)	(1207852.6710,158204.3170)
C3	1430.671	108.766	S83° 45' 37.24"E	(1207852.6710,158204.3170)	(1207960.7670,158192.4984)
C4	3188.047	76.922	S84° 17' 06.59"E	(1207989.1741,158189.1805)	(1208065.7123,158181.5210)
C5	200.214	49.887	N85° 03' 37.06"E	(1208065.7123,158181.5210)	(1208115.2853,158185.8055)
C6	857.275	39.110	N79° 13' 27.24"E	(1208188.2425,158201.4232)	(1208226.6599,158208.7348)
C7	17.582	26.491	S57° 38' 02.65"E	(1208245.0020,158211.7940)	(1208265.3202,158198.9166)




 DEPARTMENT OF PUBLIC WORKS
 CIVIL ENGINEERING
 701 W. MARKHAM
 LITTLE ROCK, ARKANSAS 72201



DRAWN BY

DESIGNED
JRH

CHECKED
JRH

DATE
1/15/19

SCALE
1"=20'

PROJECT NO.
03-17-ST-163

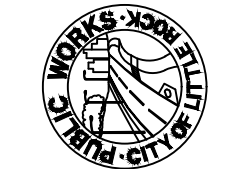
SHEET NO.
C3

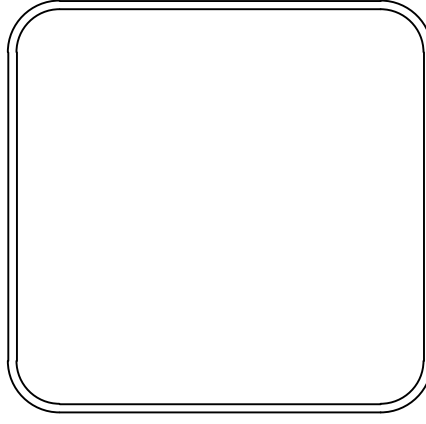
C:\working\031716\SHANNON DR PLANS - VE.dwg, C:\LAYOUT\031716\04 AM LAYOUT

REVISIONS	DATE

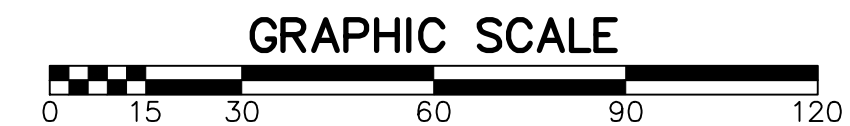
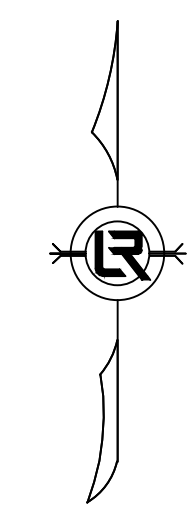
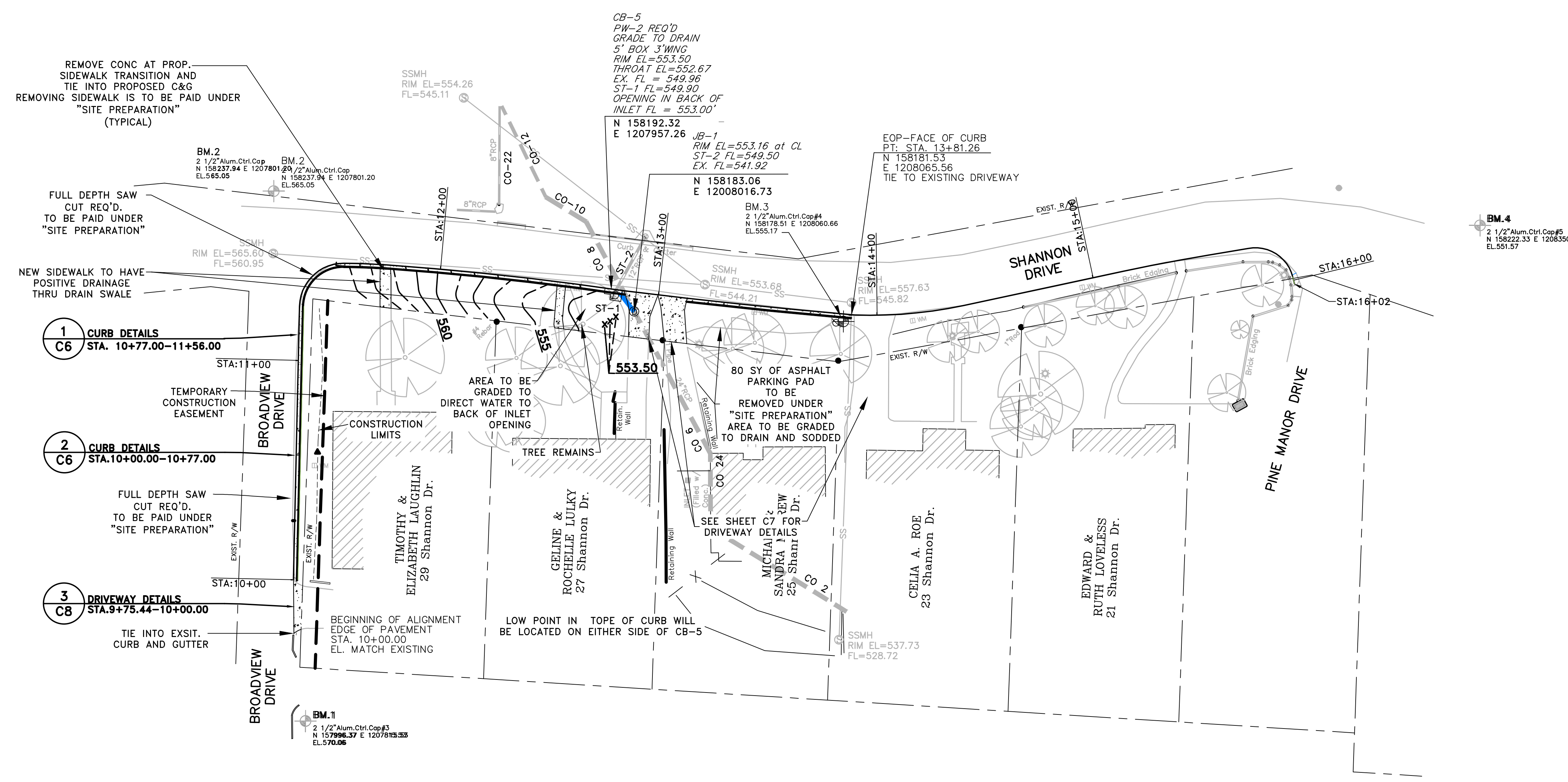
CITY OF LITTLE ROCK, ARKANSAS
SHANNON DR. DRAINAGE IMPROVEMENTS

PROPOSED


 DEPARTMENT OF PUBLIC WORKS
 CIVIL ENGINEERING
 701 W. MARKHAM
 LITTLE ROCK, ARKANSAS 72201

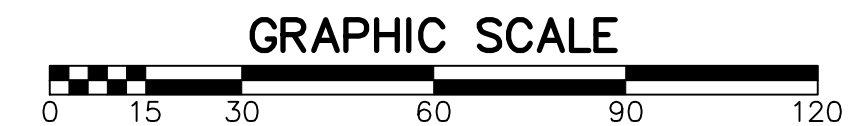
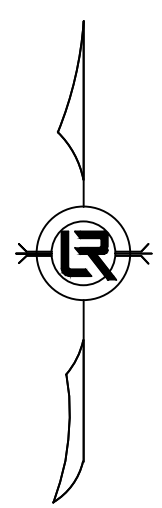
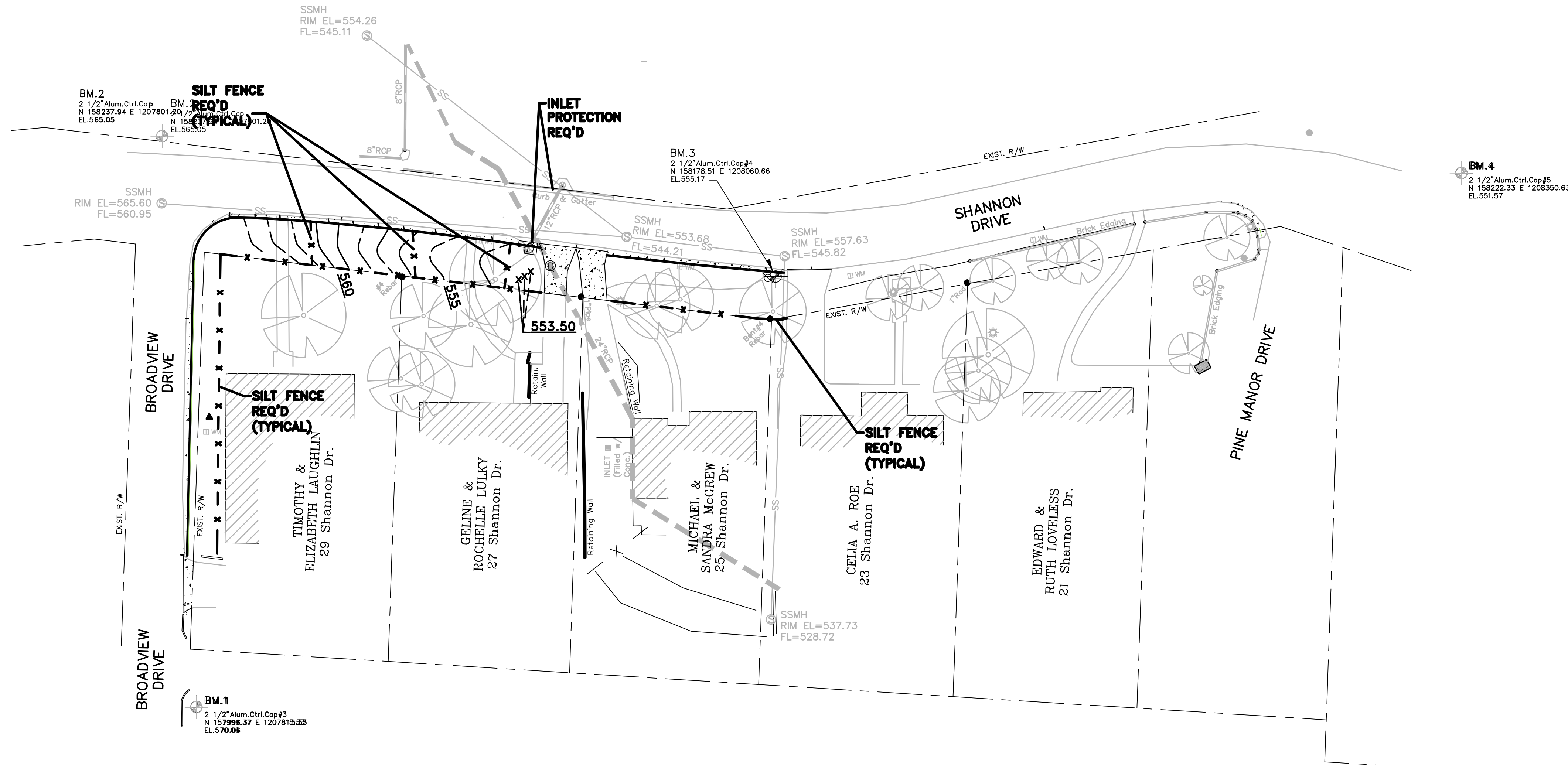


DRAWN BY	JRH
DESIGNED	JRH
CHECKED	JRH
DATE	1/15/19
SCALE	1"=20'
PROJECT NO.	03-17-ST-163
SHEET NO.	C4



C:\working\031716\17163\SHANNON DR PLANS_V.E.dwg, CT PROPOSED, 02/20/2019 11:16:40 AM, LLLIGHTO

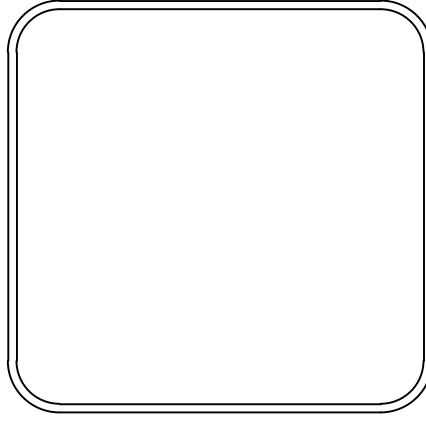
C:\working\area\108818789\SHANNON DR PLANS_V.E.dwg, CS Erosion Control, 9/20/2019 11:37:11 AM, LUGHTFO



REVISIONS	DATE

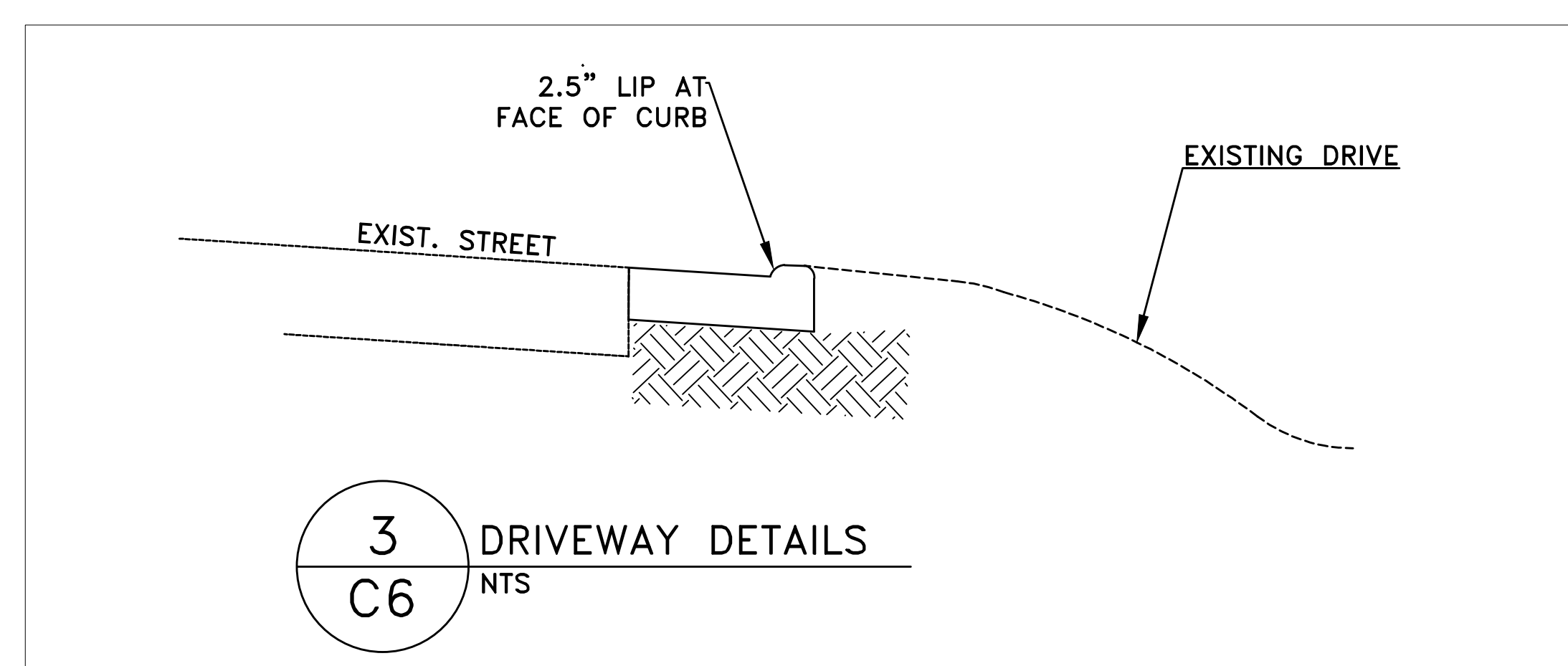
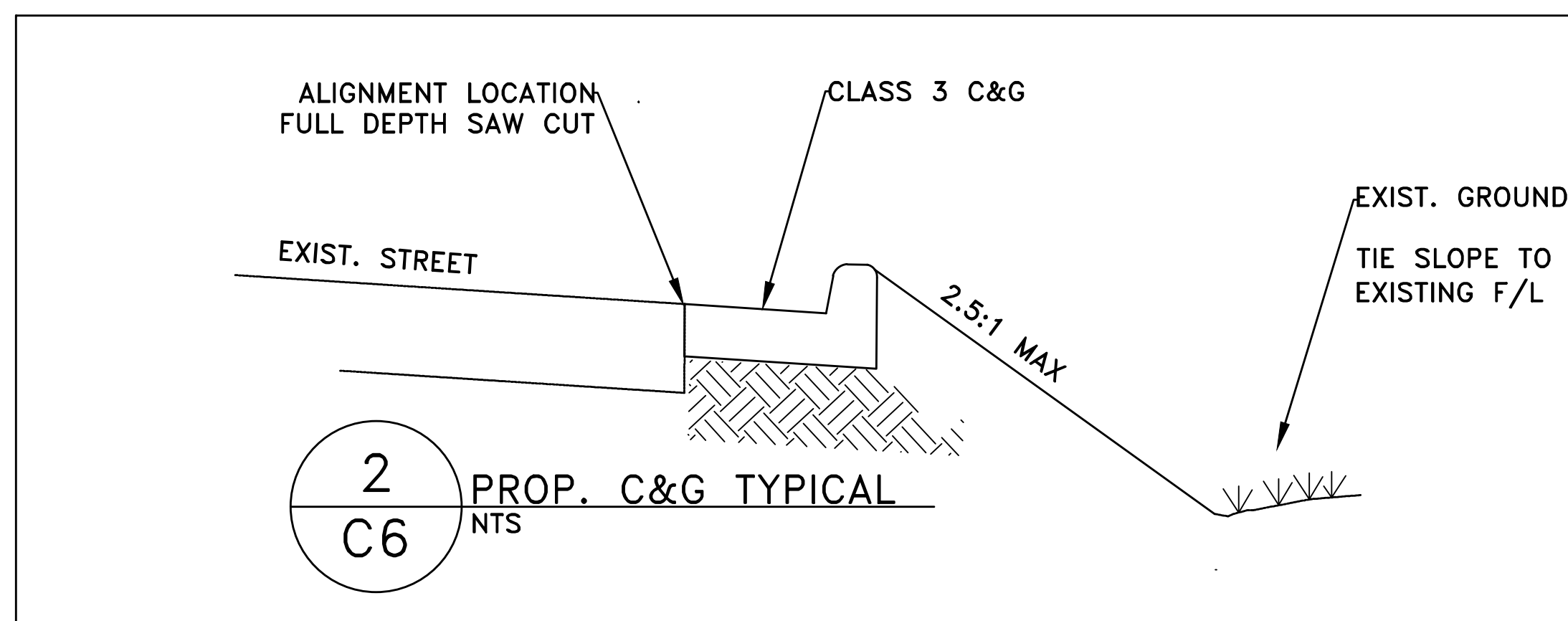
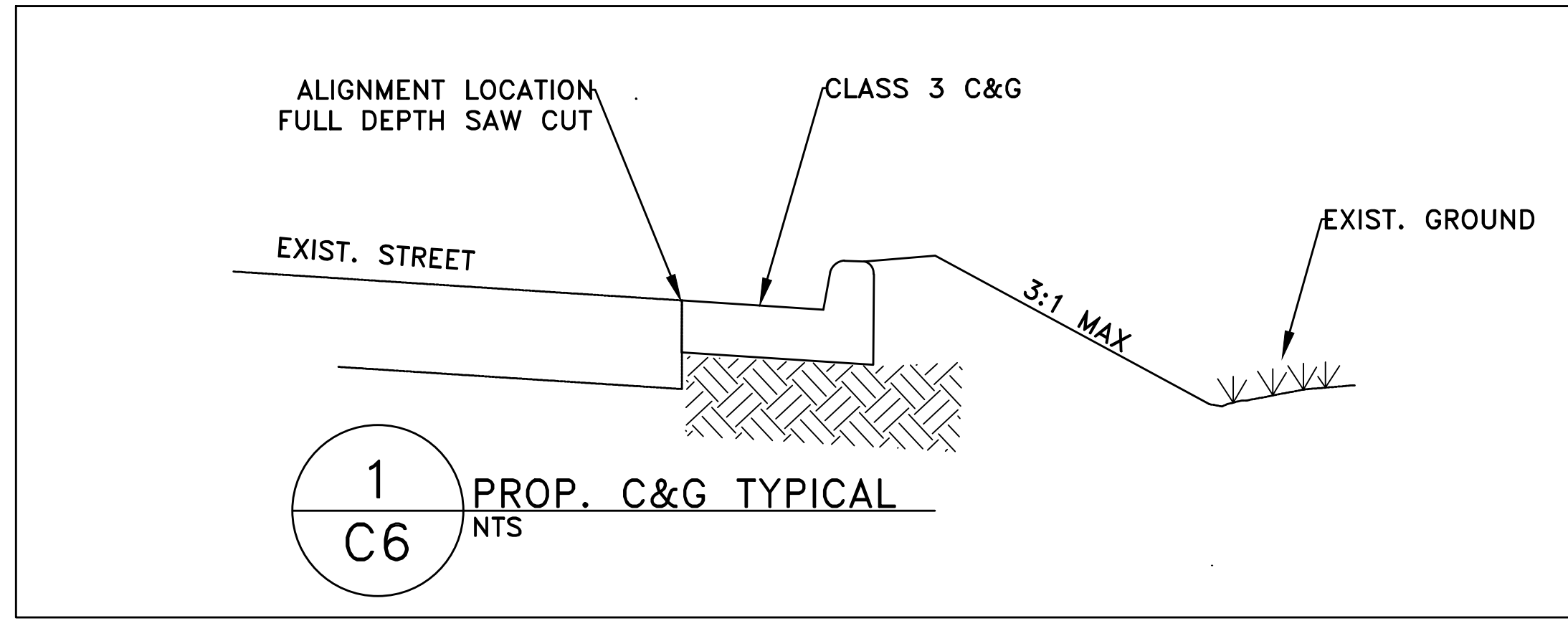
CITY OF LITTLE ROCK, ARKANSAS
 SHANNON DR. DRAINAGE IMPROVEMENTS
 EROSION CONTROL

DEPARTMENT OF PUBLIC WORKS
 CIVIL ENGINEERING
 701 W. MARKHAM
 LITTLE ROCK, ARKANSAS 72201



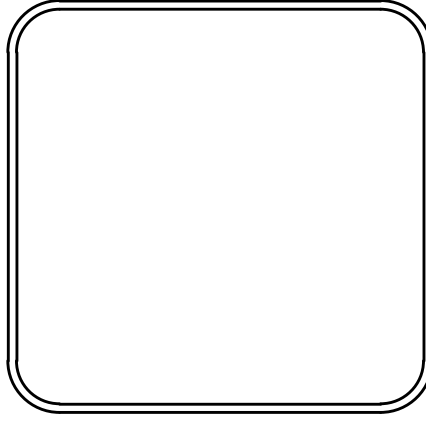
DRAWN BY
DESIGNED
JRH
CHECKED
JRH
DATE
1/15/19
SCALE
1"=20'
PROJECT NO.
03-17-ST-163
SHEET NO.
C5

REVISIONS	DATE



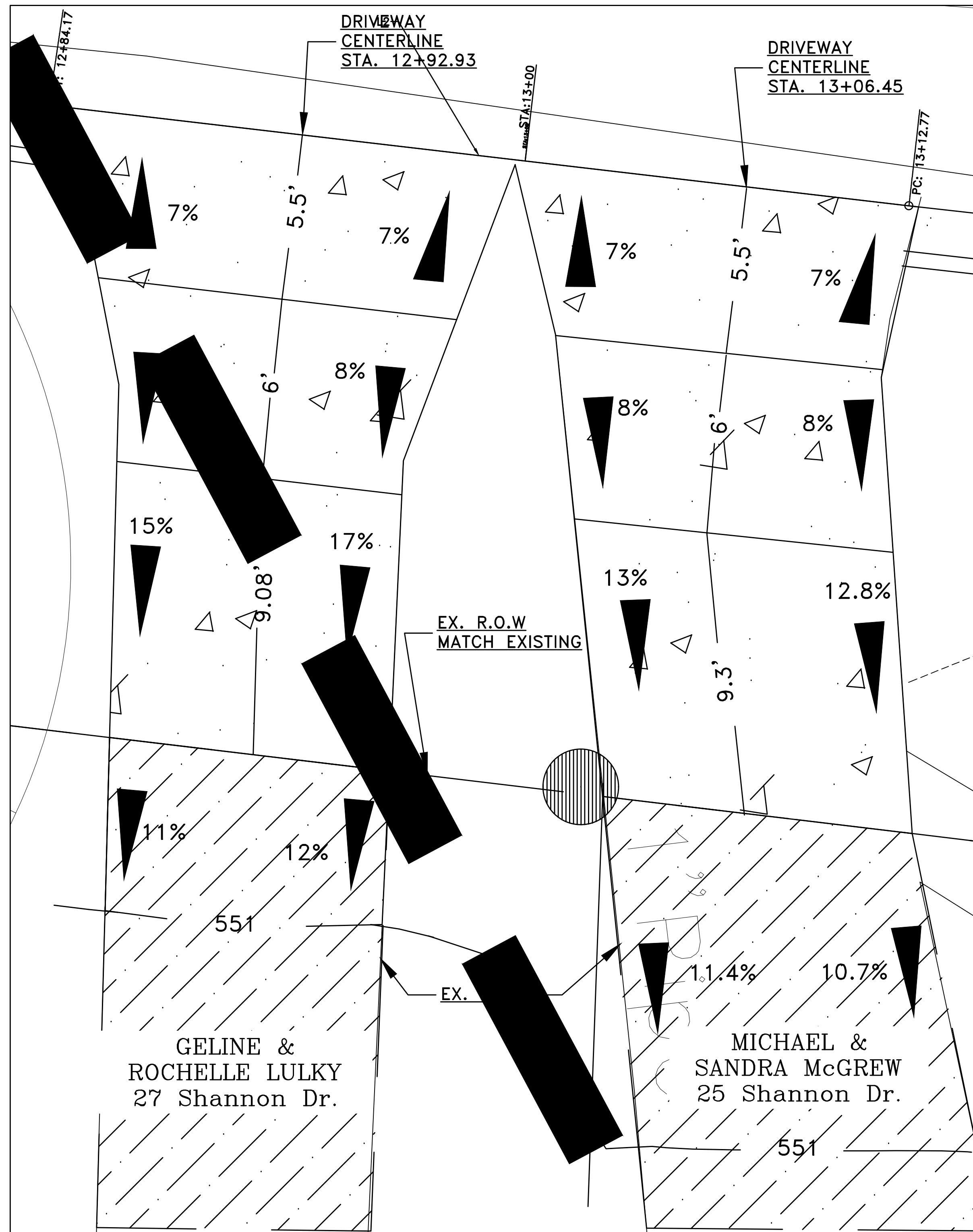
CITY OF LITTLE ROCK, ARKANSAS
SHANNON DR. DRAINAGE IMPROVEMENTS
DETAILS

DEPARTMENT OF PUBLIC WORKS
CIVIL ENGINEERING
701 W. MARKHAM
LITTLE ROCK, ARKANSAS 72201



DRAWN BY
DESIGNED JRH
CHECKED JRH
DATE 1/15/19
SCALE 1"=20'
PROJECT NO. 03-17-ST-163
SHEET NO. C6

C:\working\shannon\120817\89\SHANNON DR. PLANS - VE.dwg, CUI DETAILS, 9/20/2018 11:18:05 AM, LLLIGHT.PLO



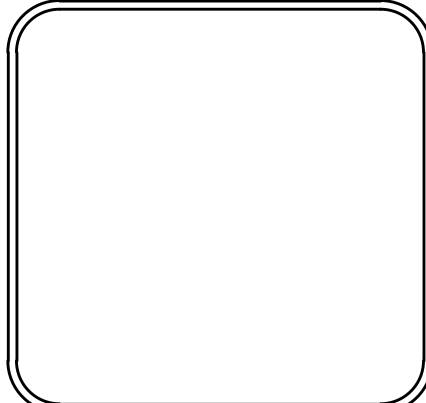
DRIVEWAY DETAILS
NTS

C:\working\031719\031719SHANNON DR PLANS_V.E.dwg, C7 DRIVEWAY DETAILS, 3/20/2019 11:18:45 AM, LUCIFRO

REVISIONS	DATE

CITY OF LITTLE ROCK, ARKANSAS
SHANNON DR. DRAINAGE IMPROVEMENTS
DRIVEWAY DETAILS

DEPARTMENT OF PUBLIC WORKS
CIVIL ENGINEERING
701 W. MARKHAM
LITTLE ROCK, ARKANSAS 72201



DRAWN BY	
DESIGNED	JRH
CHECKED	JRH
DATE	1/15/19
SCALE	1"=20'
PROJECT NO.	03-17-ST-163
SHEET NO.	C7