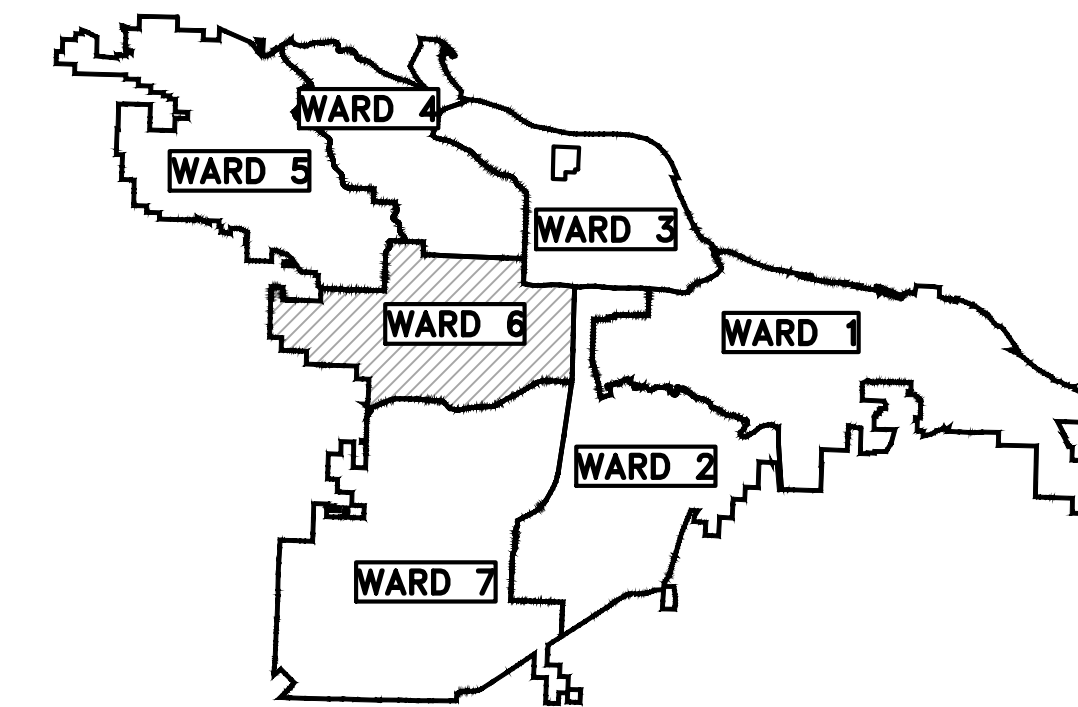


CLR PROJECT # 06-16-DR-234

22ND STREET ROW DRAIN IMPROVEMENTS

22ND STREET ROW (W. OF PERRY ST.)

100% PLANS



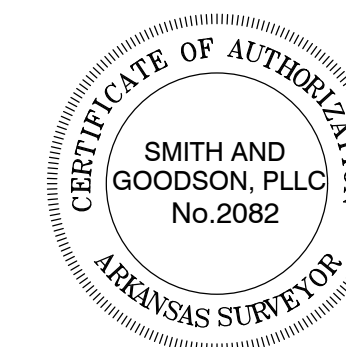
PROJECT LOCATION - WARD 6

SHEET NO.	TITLE
C1	COVER SHEET
C2	LEGEND / GENERAL NOTES
C3	ROW DRAIN PLAN & PROFILE SHEET 1 OF 1
C4	EROSION CONTROL PLAN

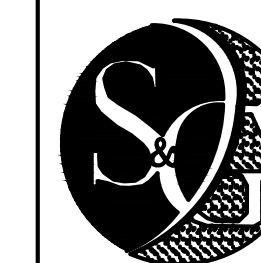


2019-2021
BOND PROGRAM

DEPARTMENT OF PUBLIC WORKS
CIVIL ENGINEERING
701 WEST MARKHAM STREET
LITTLE ROCK, ARKANSAS 72201



Know what's below.
Call before you dig.



SMITH AND GOODSON

PLLC
CIVIL ENGINEERING AND LAND SURVEYING
7509 CANTRELL ROAD, SUITE 227
LITTLE ROCK, ARKANSAS 72207
501-414-8498

PROJECT ENGINEER:

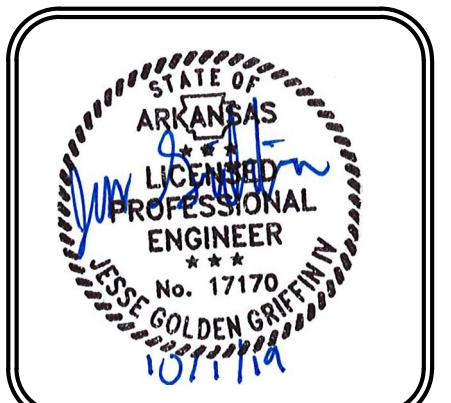
JESS GRIFFIN, PE
(501) 690-3456 - JGGRIFINPE@GMAIL.COM

REVISIONS	DATE

CITY OF LITTLE ROCK, ARKANSAS
22ND STREET ROW DRAIN IMPROVEMENTS

COVER SHEET
100% PLANS

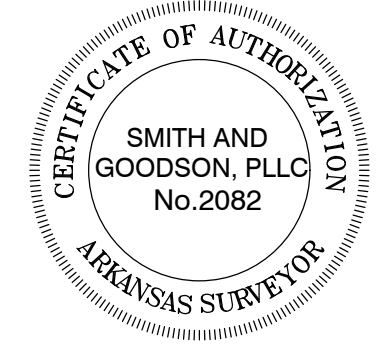
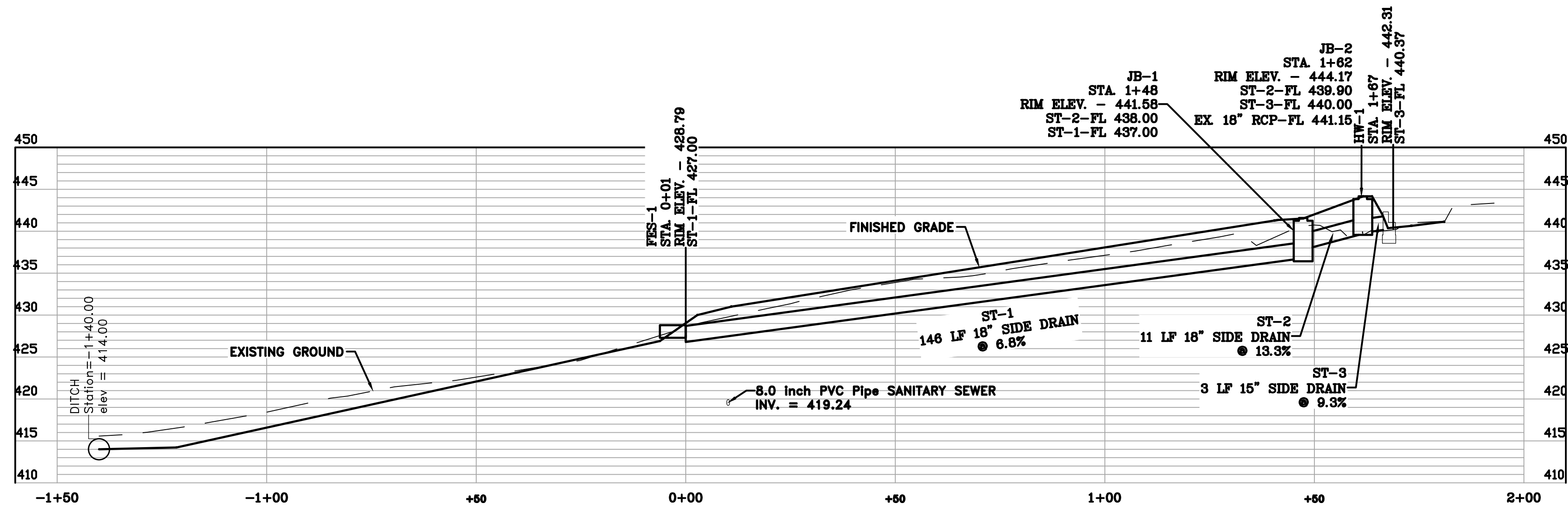
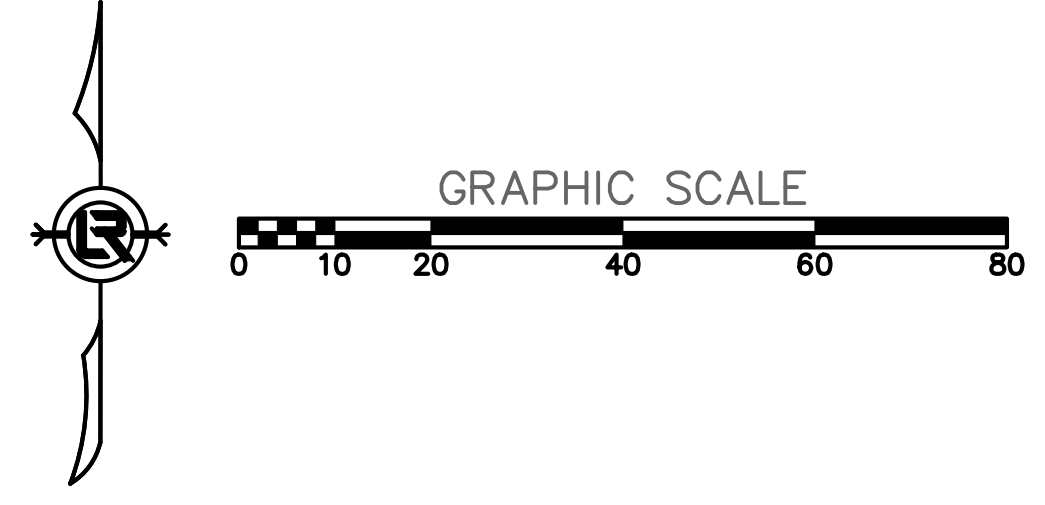
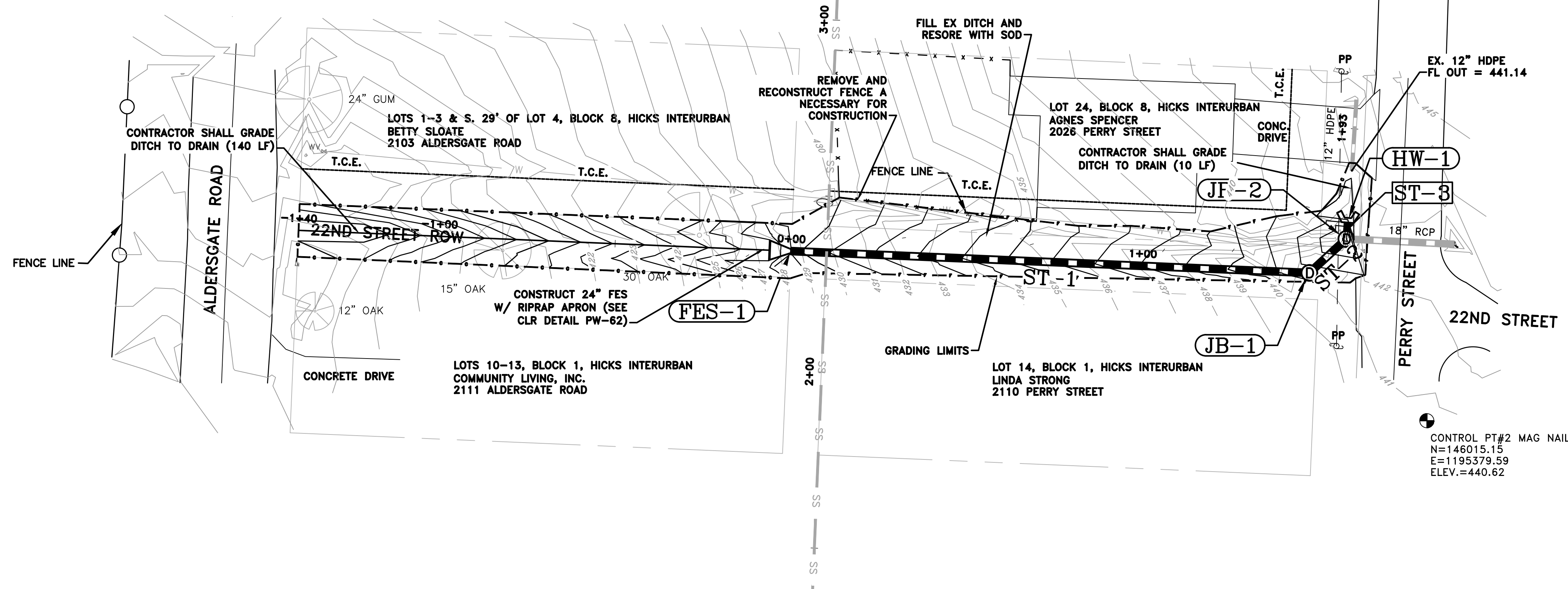
DEPARTMENT OF PUBLIC WORKS
CIVIL ENGINEERING
701 W. MARKHAM
LITTLE ROCK, ARKANSAS 72201



DRAWN BY
J. GRIFFIN
DESIGNED
J. GRIFFIN
CHECKED
A. SMITH
DATE
10/01/2019
SCALE
NTS


PROJECT NO.
CLR # 06-16-DR-234
SHEET NO.

C1



REVISIONS	DATE

CITY OF LITTLE ROCK, ARKANSAS
22ND STREET ROW DRAIN IMPROVEMENTS
 ROW DRAIN PLAN & PROFILE SHEET 1 OF 1
 100% PLANS


 DEPARTMENT OF PUBLIC WORKS
 CIVIL ENGINEERING
 701 W. MARKHAM
 LITTLE ROCK, ARKANSAS 72201



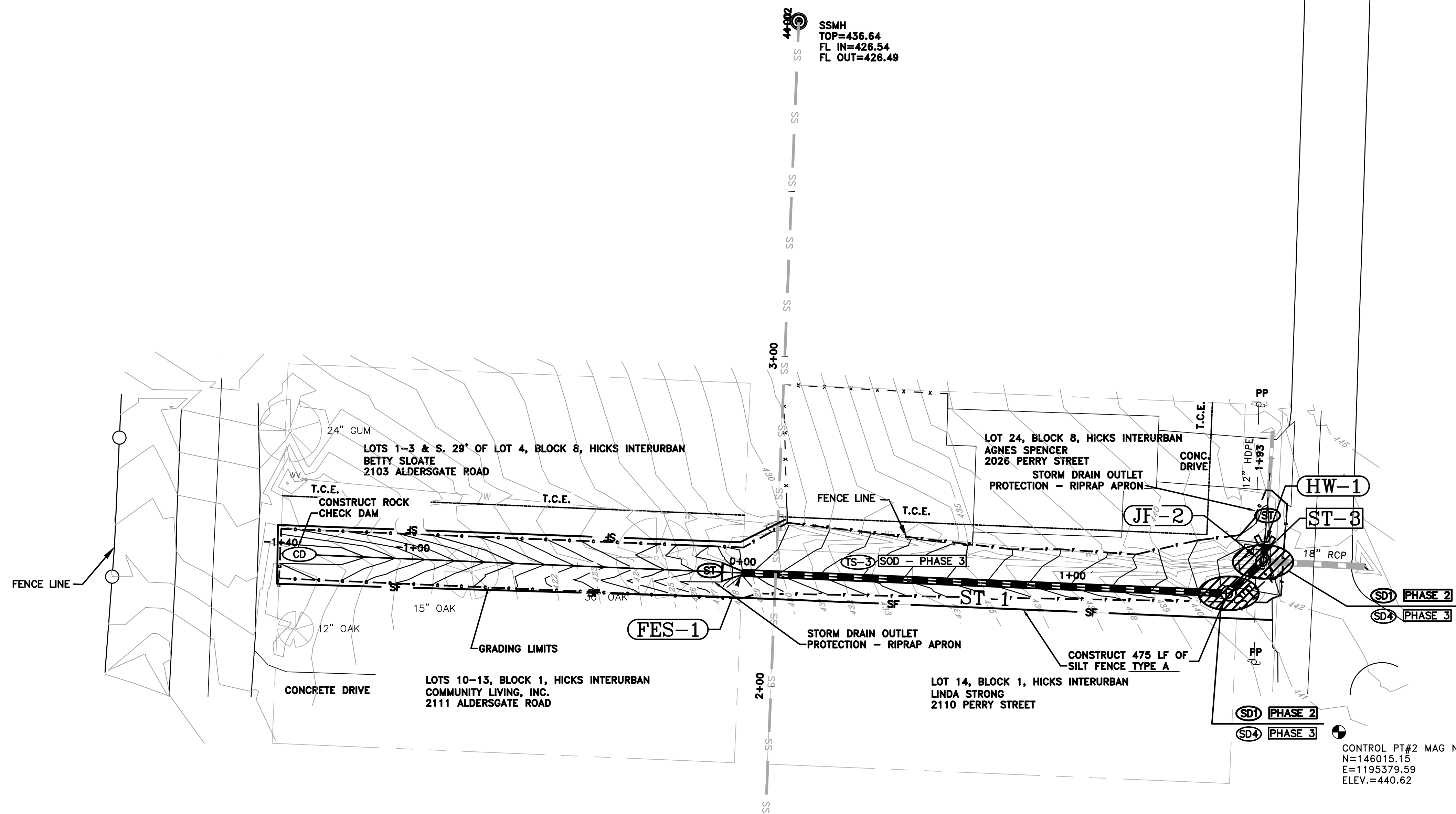
DRAWN BY
J. GRIFFIN
 DESIGNED
J. GRIFFIN
 CHECKED
A. SMITH
 DATE
 10/01/2019
 SCALE
 NTS
 PROJECT NO.
 CLR # 06-16-DR-234
 SHEET NO.
C3

PHASING LEGEND
 PHASE 1 (INITIAL STRIP AND DEMOLITION)
 PHASE 2 (NEW DRAINAGE AND BASE COURSE IN PLACE)
 PHASE 3 (PAVED, GRASS NOT YET ESTABLISHED)

CONTROL PT#1 MAG NAIL IN ASPHALT
 LOCATED ON THE EAST EDGE OF PAVEMENT
 AT 2015 PERRY STREET.
 N=146401.26
 E=1195394.39
 ELEV.=461.27

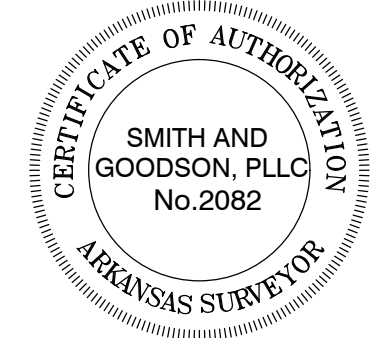
REVISIONS	DATE

CITY OF LITTLE ROCK, ARKANSAS
 22ND STREET ROW DRAIN IMPROVEMENTS
 EROSION CONTROL PLAN
 100% PLANS



SSMH
 TOP=436.64
 FL IN=426.54
 FL OUT=426.49

CONTROL PT#2 MAG NAIL
 N=146015.15
 E=1195379.59
 ELEV.=440.62



DEPARTMENT OF PUBLIC WORKS
 CIVIL ENGINEERING
 701 W. MARKHAM
 LITTLE ROCK, ARKANSAS 72201



DRAWN BY
 J. GRIFFIN
 DESIGNED
 J. GRIFFIN
 CHECKED
 A. SMITH
 DATE
 10/01/2019
 SCALE
 1" = 20'
 PROJECT NO.
 CLR # 06-16-DR-234
 SHEET NO.
C4