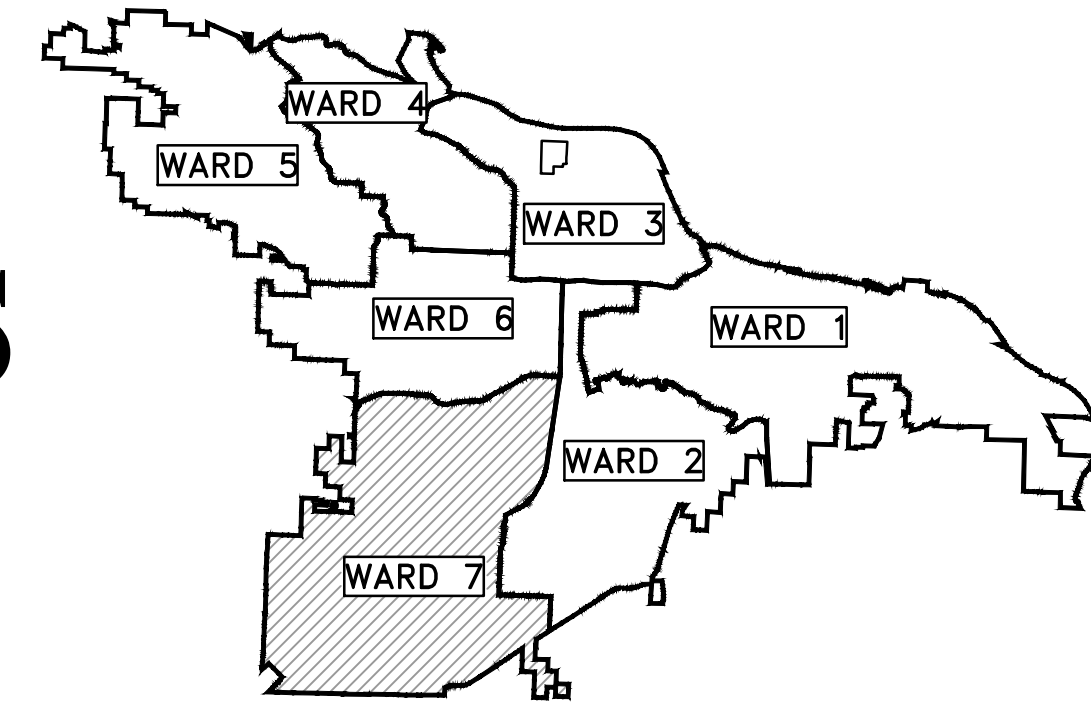


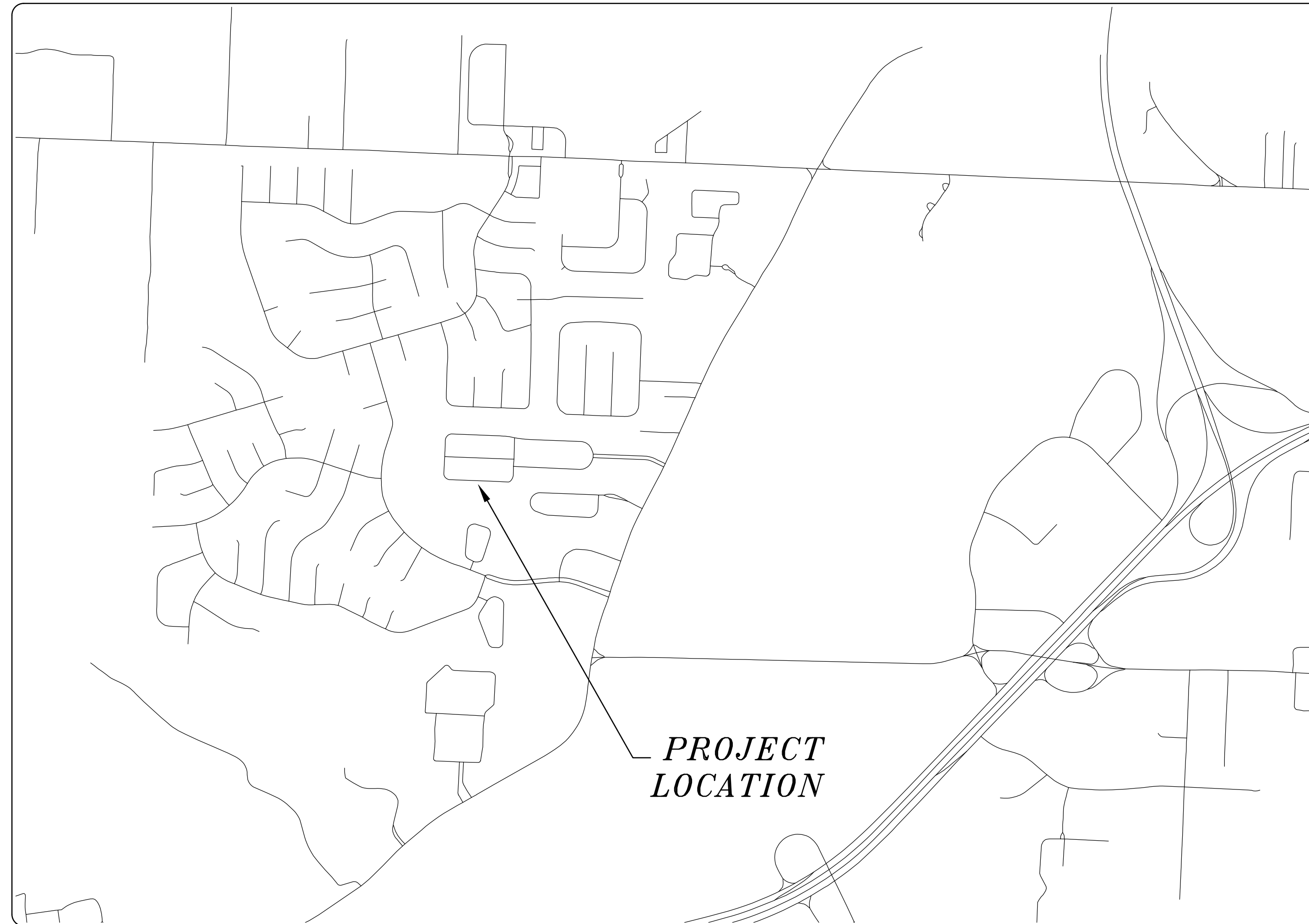
7-19-ST-400

BENTLEY COURT IMPROVEMENTS

BENTLEY COURT



PROJECT LOCATION - WARD 7



| SHEET NO. | TITLE |
|-----------|--------------------------------|
| C1 | COVER SHEET |
| C2 | QUANTITIES, DETAILS AND LEGEND |
| C3 | PLAN VIEW 1 |
| C4 | PLAN VIEW 2 |
| | |
| | |



2019-2021
BOND PROGRAM

DEPARTMENT OF PUBLIC WORKS
CIVIL ENGINEERING
701 WEST MARKHAM STREET
LITTLE ROCK, ARKANSAS 72201



**Know what's below.
Call before you dig.**

| REVISIONS | DATE |
|-----------|------|
| | |

CITY OF LITTLE ROCK, ARKANSAS
BENTLEY COURT IMPROVEMENTS

COVER SHEET

DEPARTMENT OF PUBLIC WORKS
CIVIL ENGINEERING
701 W. MARKHAM
LITTLE ROCK, ARKANSAS 72201

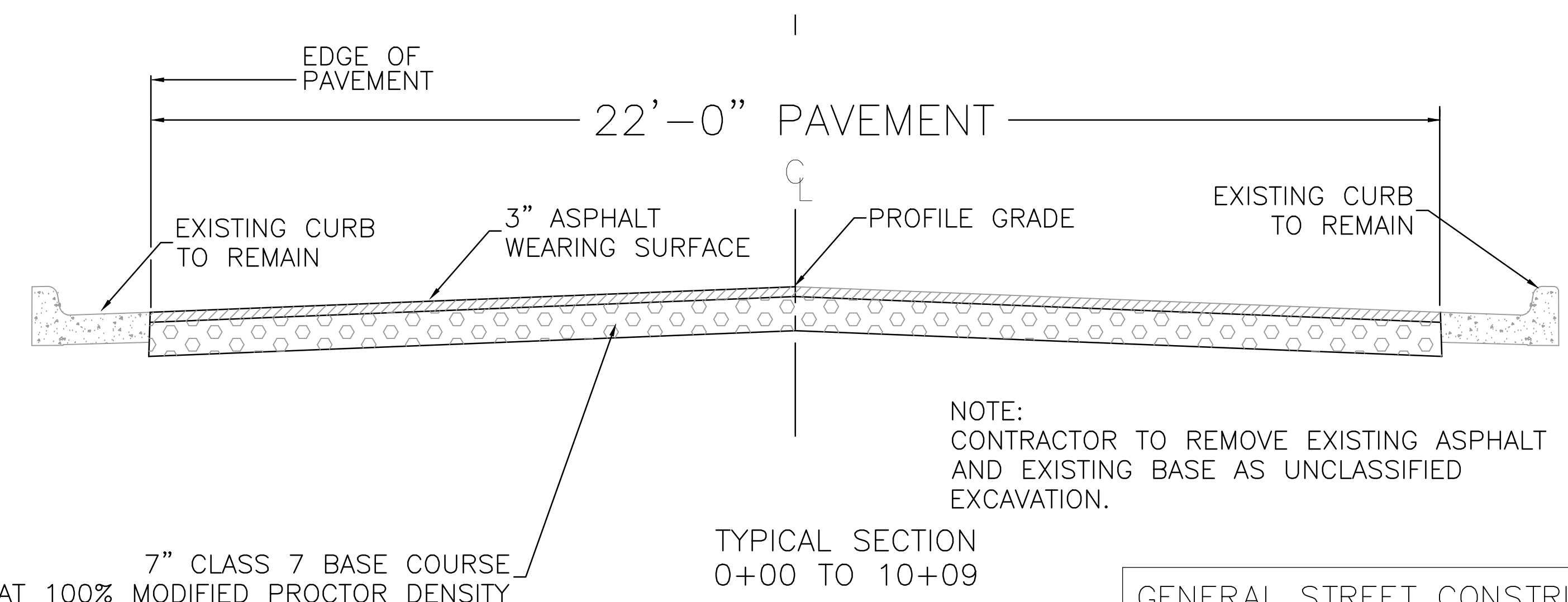


SEAL

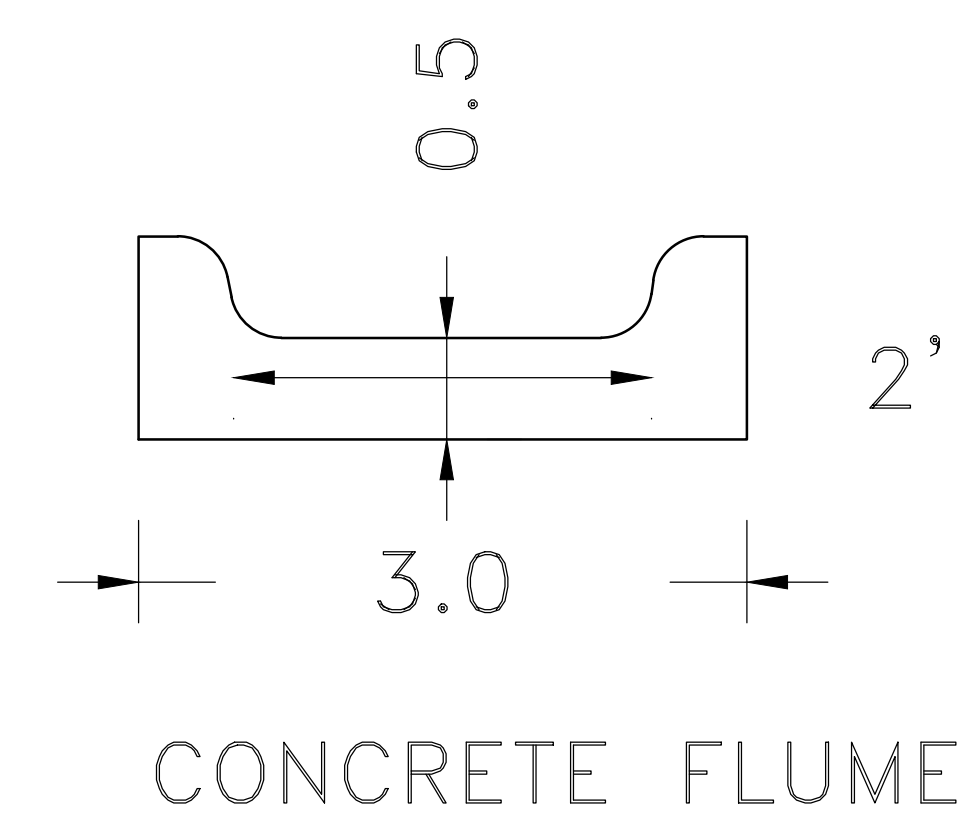
| | |
|-------------|------------------|
| DRAWN BY | VH |
| DESIGNED | DH |
| CHECKED | DH |
| DATE | 07-05-2019 |
| SCALE | 1"=1000' |
| PROJECT NO. | CLR 07-19-ST-400 |
| SHEET NO. | C1 |

| REVISIONS | DATE |
|-----------|------|
| | |
| | |

| BENTLEY COURT IMPROVEMENTS | | | |
|----------------------------|---|----------|----------|
| | | 5-Jul-19 | |
| ITEM # | ITEM DESCRIPTION | UNIT | QUANTITY |
| 2.01 | SITE PREPARATION | LS | 1 |
| 3.01 | UNCLASSIFIED EXCAVATION | CY | 685 |
| 4.01 | AGGREGATE BASE COURSE | TON | 1065 |
| 6.01 | ACHM SURFACE COURSE | TON | 410 |
| 8.01 | CONCRETE CURB & GUTTER (MATCH EXISTING) | LF | 70 |
| 19.01 | FINAL CLEANUP | LS | 1 |
| 23.01 | B-STONE (INCLUDES UNDERCUT) | TON | 900 |
| SP | CONCRETE FLUME | EA | 1 |
| SUB-TOTAL | | | |

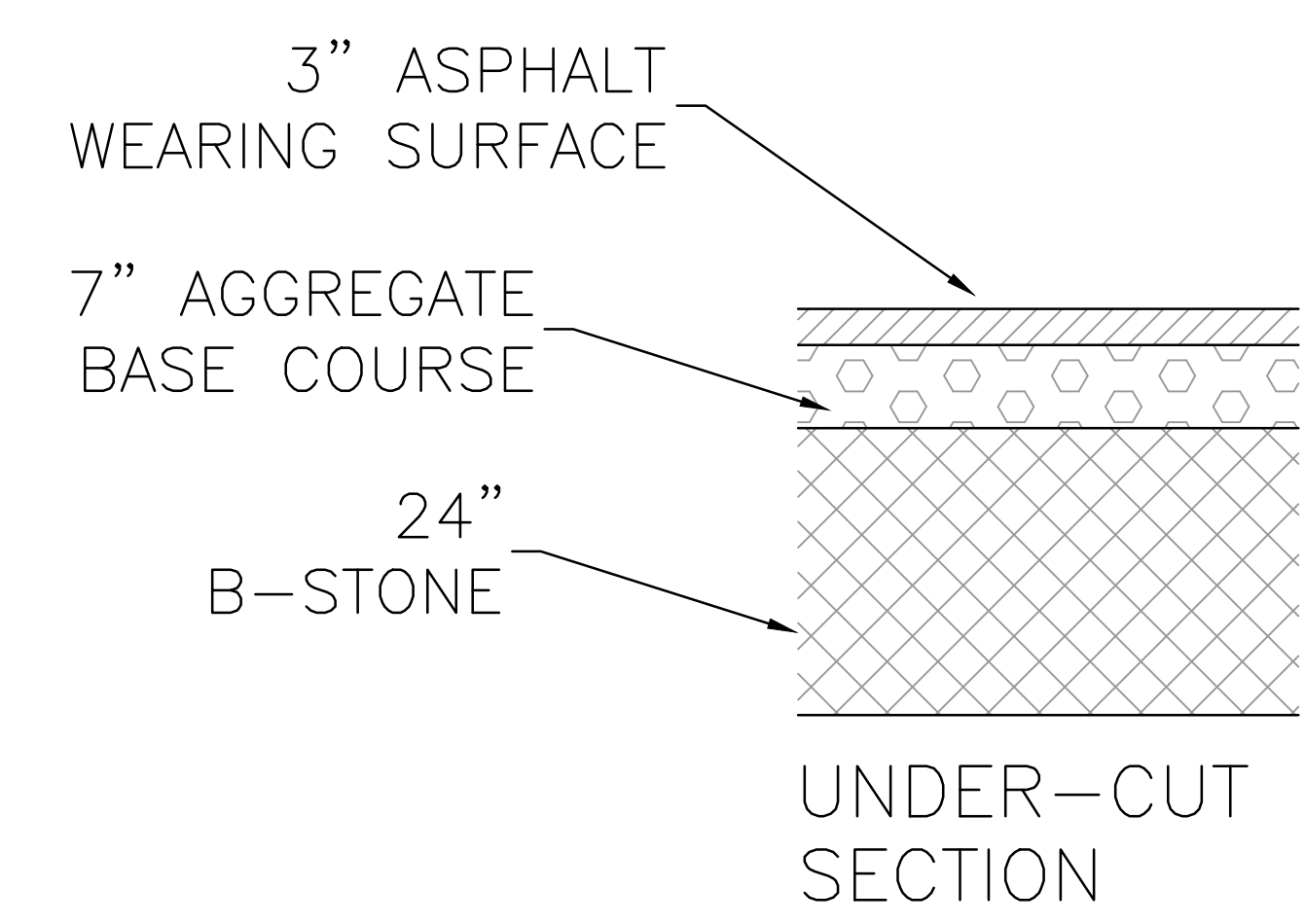


GENERAL STREET CONSTRUCTION NOTES:
 WORK ASSOCIATED WITH THIS DETAIL COMPLY WITH LITTLE ROCK PW-22 DETAIL. IF OR WHERE DIRECTED, UNDERCUT, EXCAVATE, AND RECONSTRUCT SUBGRADE WITH B STONE PER DETAIL A AS DIRECTED BY ENGINEER TO REPAIR SUBGRADE FAILURES.



EXISTING PROPOSED

| | | | |
|------------------------------|----------|--|---------|
| IRON ROD | ○ IR | PROPOSED CONTOUR | ○ 25 |
| PK NAIL | ○ PK | PROPOSED SPOT ELEVATION | ○ 25.00 |
| R.R. SPIKE | ○ RR(Sp) | PROPOSED SPOT CURB ELEVATION | ○ 25.50 |
| CONC. MONUMENT | □ CM | STORM SEWER - PIPE | — |
| WATER VALVE | ⊗ WV | STORM SEWER - MITERED END SECTION | — |
| WATER METER | □ WM | STORM SEWER - GRATE INLET | — |
| FIRE HYDRANT | ⊗ FH | STORM SEWER - JUNCTION BOX | — |
| GAS METER | □ GM | STORM SEWER - FLARED END SECTION | — |
| GAS VALVE | ⊗ GV | STORM SEWER - HEADWALL | — |
| CLEAN-OUT | ○ CO | STORM SEWER - SINGLE WING | — |
| GUARD POST (BOLLARD) | • GP | STORM SEWER - DOUBLE WING | — |
| SIGN POST | — | STORM SEWER - AREA INLET | — |
| BENCHMARK | — | GRADE BREAK LINE | — |
| STORM SEWER MANHOLE | ⊕ | HIGH POINT | HP |
| SANITARY SEWER MANHOLE | ⊕ | LOW POINT | LP |
| TELEPHONE MANHOLE | ⊕ | CUT LINE | C |
| ELECTRIC MANHOLE | ⊕ | FILL LINE | F |
| TELEPHONE BOX | ⊕ | SANITARY SEWER PIPE | SAN |
| ELECTRIC BOX | ⊕ | SANITARY SEWER MANHOLE | ⊕ |
| CABLE BOX | ⊕ | PROPOSED CURB | — |
| UTILITY POLE | ⊕ | PROPOSED CONCRETE | — |
| GUY WIRE | — | CONSTRUCTION - ENTRANCE/EXIT | CO |
| LIGHT POLE | ⊕ | CHECK DAM | CD |
| POST OR POLE (TYPE AS NOTED) | ⊕ | DIVERSION BERM | DI |
| MAILBOX | ⊕ | DOWNDRAIN STRUCTURE - TEMPORARY | DN |
| DECIDUOUS TREE | ⊕ | ROCK DAM | RD |
| EVERGREEN/CONIFEROUS TREE | ⊕ | SEDIMENT BARRIER - SILT FENCE | SD1 |
| BUSH | ⊕ | SEDIMENT BARRIER - GRAVEL RING | SD2 |
| PROPERTY LINE | — | SEDIMENT BARRIER - BLOCK & GRAVEL | SD3 |
| SETBACK LINE | — | SEDIMENT BARRIER - BLOCK | SD4 |
| EASEMENT LINE | — | TEMPORARY SEDIMENT BASIN | SB1 |
| CURB | — | SILT FENCE - TYPE A | SFA |
| FENCE | — | SILT FENCE - TYPE B | SFB |
| OVERHEAD ELECTRIC | — | SILT FENCE - TYPE C | SFC |
| OVERHEAD TELEPHONE | — | STORM DRAIN OUTLET PROTECTION | ST |
| OVERHEAD CABLE | — | SURFACE ROUGHENING | SU |
| UNDERGROUND TELEPHONE | — | DISTURBED AREA STABILIZATION - TEMPORARY STABILIZATION | TS1 |
| UNDERGROUND ELECTRIC | — | DISTURBED AREA STABILIZATION - TEMPORARY GRASSING | TS2 |
| UNDERGROUND CABLE | — | DISTURBED AREA STABILIZATION - PERMANENT GRASSING | TS3 |
| WATER LINE | — | MATTING/BLANKETS | Mb |
| SEWER LINE | — | | |
| GAS LINE | — | | |
| STORM SEWER/CULVERT | — | | |
| EDGE OF WOODS | — | | |
| CONTOUR LINE | — | | |



CITY OF LITTLE ROCK, ARKANSAS
 BENTLEY COURT IMPROVEMENTS
 DETAILS, QUANTITIES & LEGEND

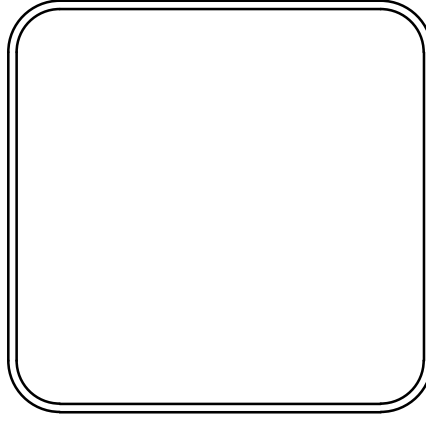
DEPARTMENT OF PUBLIC WORKS
 CIVIL ENGINEERING
 701 W. MARKHAM
 LITTLE ROCK, ARKANSAS 72201

DRAWN BY
 VH
 DESIGNED
 DH
 CHECKED
 DH
 DATE
 07-05-2019
 SCALE
 NTS
 PROJECT NO.
 CLR 07-19-ST-400
 SHEET NO.
 C2

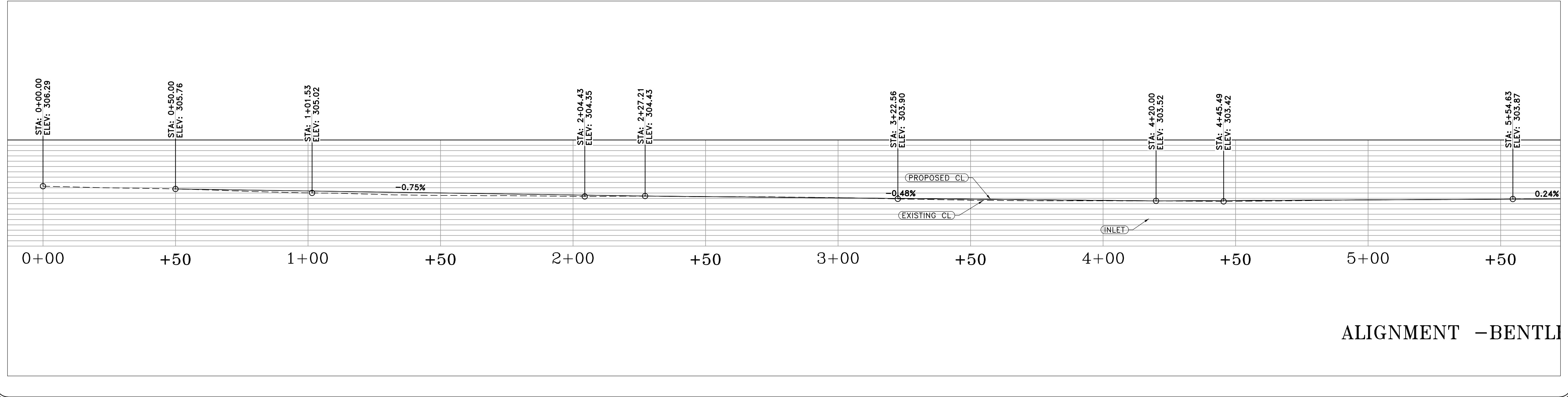
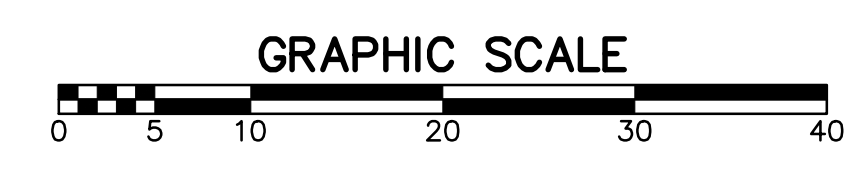
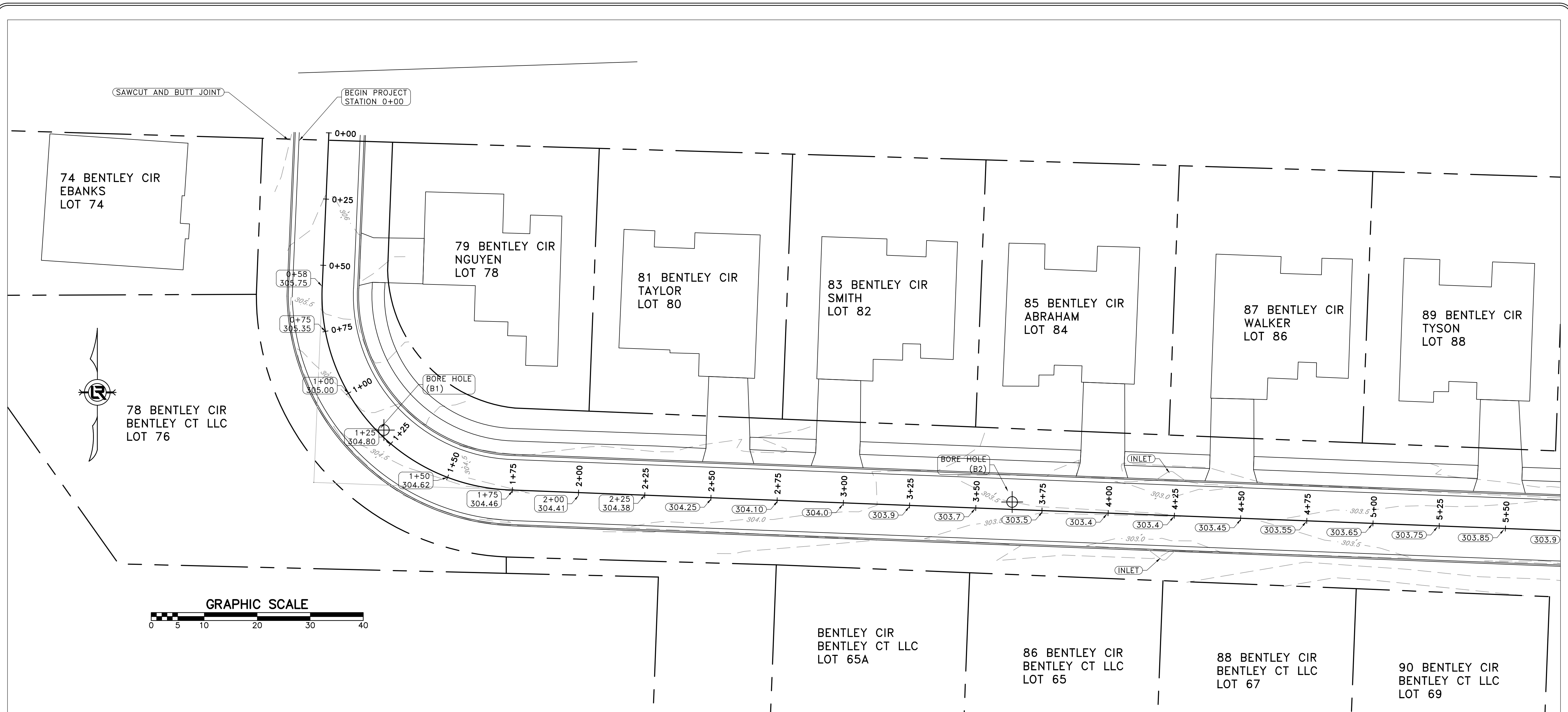
| REVISIONS | DATE |
|-----------|------|
| | |
| | |

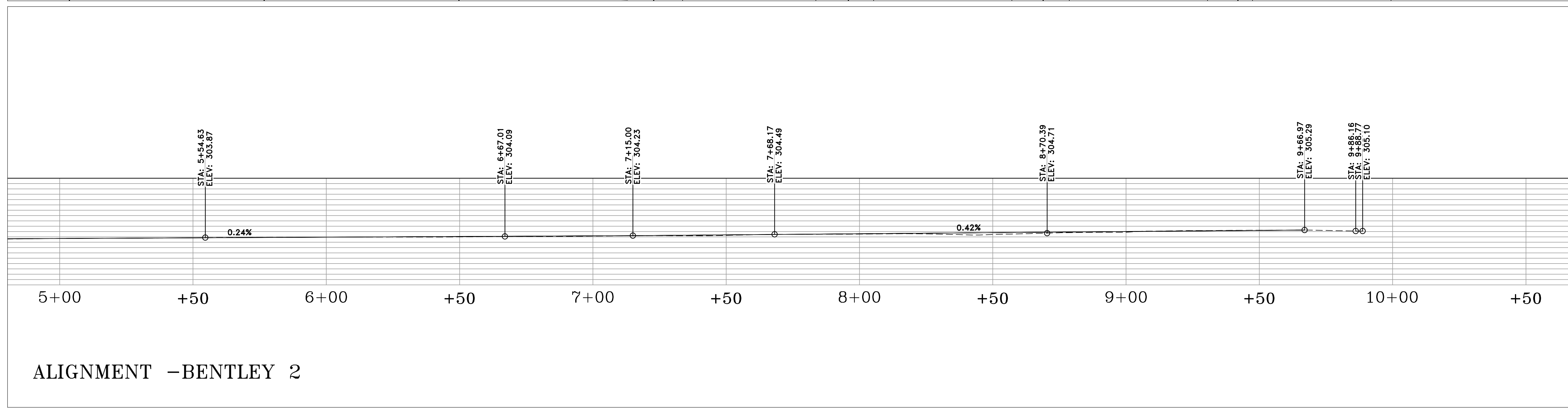
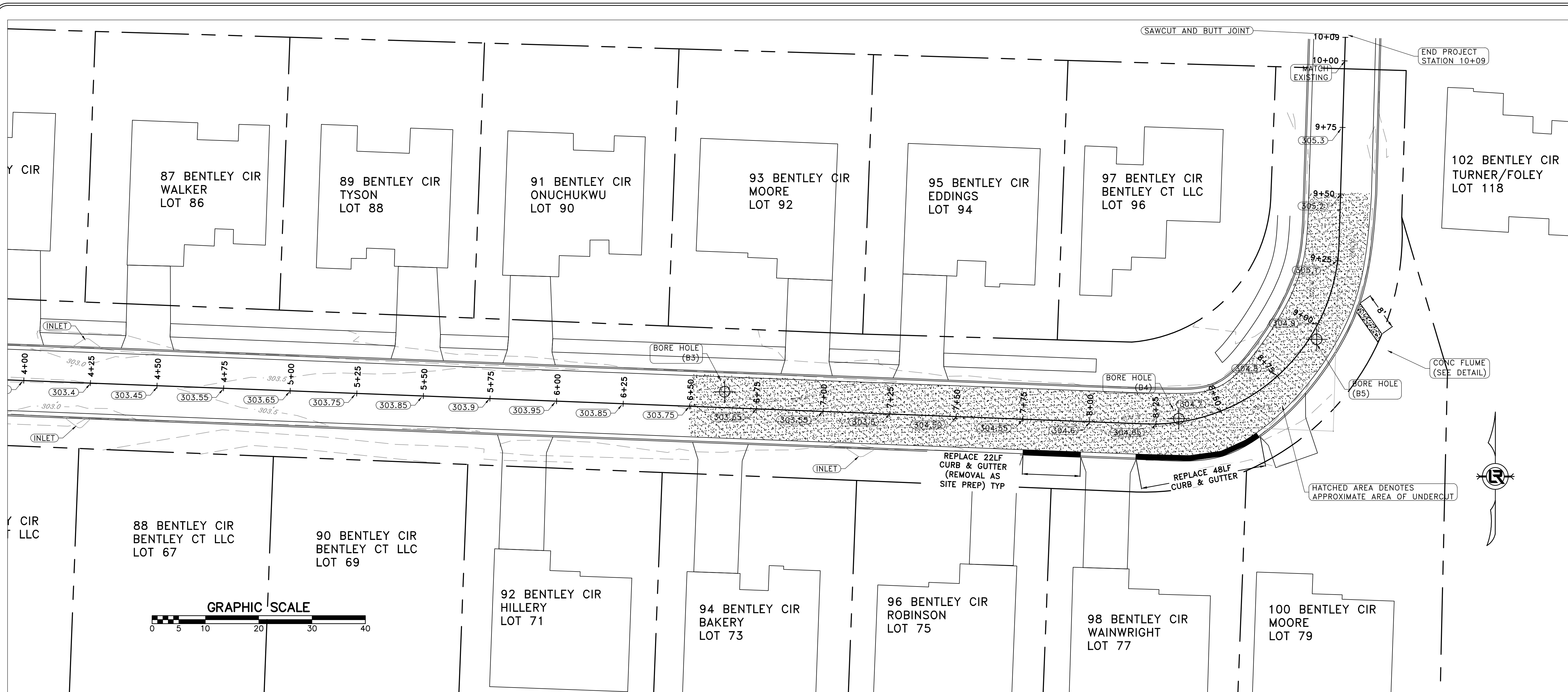
CITY OF LITTLE ROCK, ARKANSAS
 BENTLEY COURT IMPROVEMENTS
 PLAN VIEW 1

DEPARTMENT OF PUBLIC WORKS
 CIVIL ENGINEERING
 701 W. MARKHAM
 LITTLE ROCK, ARKANSAS 72201



DRAWN BY
 VH
 DESIGNED
 DH
 CHECKED
 DH
 DATE
 07-05-2019
 SCALE
 1"=10'
 PROJECT NO.
 CLR 07-19-ST-400
 SHEET NO.
 C3

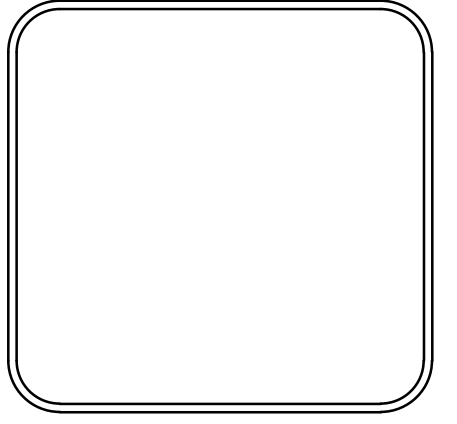




| REVISIONS | DATE |
|-----------|------|
| | |

CITY OF LITTLE ROCK, ARKANSAS
 BENTLEY COURT IMPROVEMENTS
 PLAN VIEW 2

DEPARTMENT OF PUBLIC WORKS
 CIVIL ENGINEERING
 701 W. MARKHAM
 LITTLE ROCK, ARKANSAS 72201



| |
|---------------------------------|
| DRAWN BY VH |
| DESIGNED DH |
| CHECKED DH |
| DATE 07-05-2019 |
| SCALE 1"=40' |
| PROJECT NO. CLR 07-19-ST-400 |
| SHEET NO. C4 |