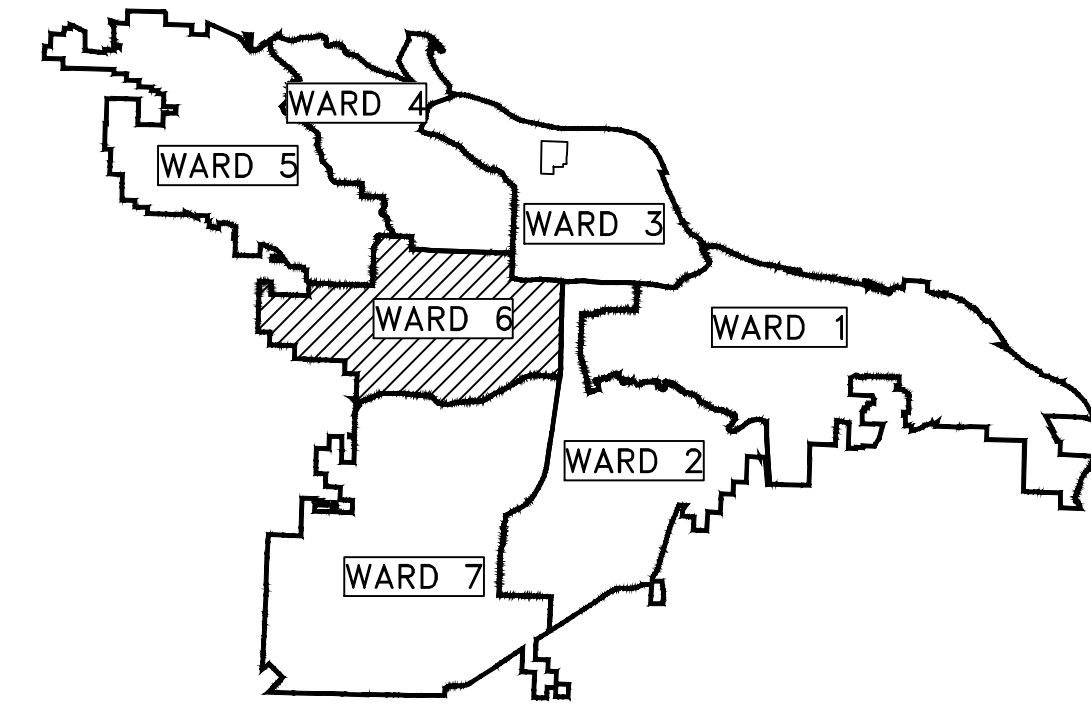


# CLR PROJECT 03-17-ST-163

## SHANNON DRIVE

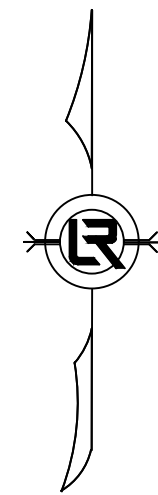
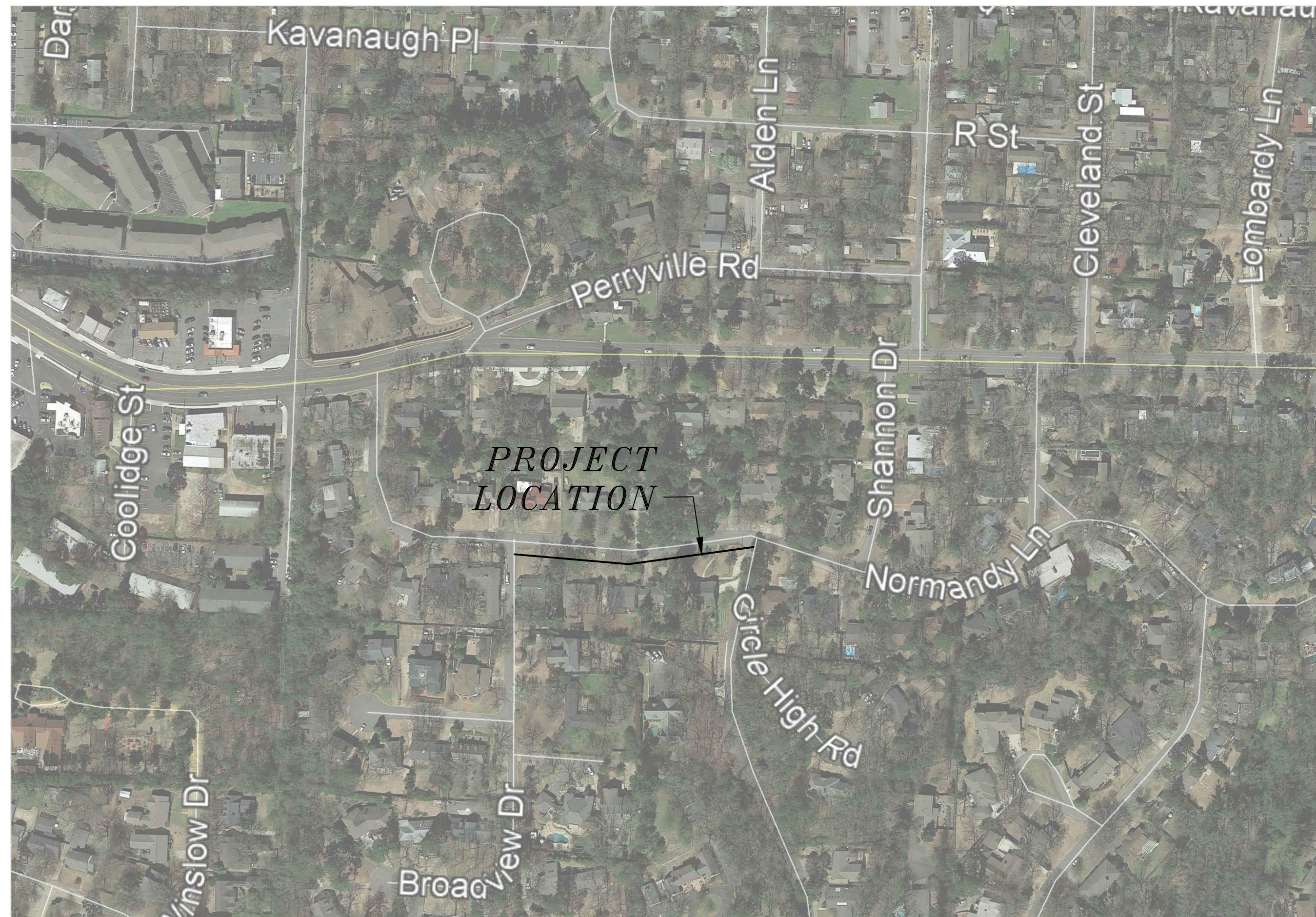
# DRAINAGE IMPROVEMENTS

### LITTLE ROCK, ARKANSAS



PROJECT LOCATION – WARD 6

SHEET NO.	TITLE
C1	COVER SHEET
C2	GENERAL NOTES, LEGEND AND QUANTITIES
C3	LAYOUT
C4	PROPOSED
C5	EROSION CONTROL
C6	DETAILS
C7	DRIVEWAY DETAILS



**2019-2021**  
**BOND PROGRAM**

DEPARTMENT OF PUBLIC WORKS  
CIVIL ENGINEERING  
701 WEST MARKHAM STREET  
LITTLE ROCK, ARKANSAS 72201

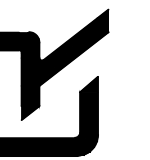


REVISIONS	DATE

CITY OF LITTLE ROCK, ARKANSAS  
SHANNON DR. DRAINAGE IMPROVEMENTS

COVER SHEET

DEPARTMENT OF PUBLIC WORKS  
CIVIL ENGINEERING  
701 W. MARKHAM  
LITTLE ROCK, ARKANSAS 72201

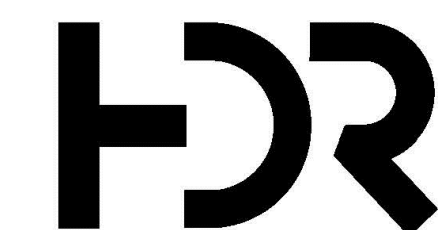


DRAWN BY

DESIGNED  
JRH  
CHECKED  
JRH  
DATE  
1/15/19  
SCALE  
NTS

PROJECT NO.  
03-17-ST-163  
SHEET NO.

C1



320 Executive Court  
Suite 304  
Little Rock, AR 72205  
501.907.7153

REVISIONS	DATE

ESTIMATED QUANTITIES			
CLR PROJECT 03-17-ST-163			
SHANNON DRIVE RECONSTRUCTION			
8-Oct-19			
ITEM #	ITEM DESCRIPTION	UNIT	QUANTITY
2.01	SITE PREPARATION	LS	1
3.01	UNCLASSIFIED EXCAVATION	CY	100
3.06	BORROW MATERIAL	CY	95
4.01	AGGREGATE BASE COURSE	TON	30
6.01	ACHM SURFACE COURSE	TON	30
7.06	CONCRETE DRIVEWAY (6" THICK), STANDARD FINISH	SF	744
8.03	CONCRETE CURB AND GUTTER (CLASS 3)	LF	382
10.01	JUNCTION BOX	EA	1
10.05	CURB INLET - 5' BOX	EA	1
10.10	WING 3' EXTENSION	EA	3
10.80	REBUILD INLET TOP	EA	1
13.18P	STORM DRAIN PIPE, 18" SIDE DRAIN	LF	20
14.01	SOLID SODDING, BERMUDA	SY	750
16.01	MAINTENANCE OF TRAFFIC	LS	1
19.10	FINAL CLEANUP	LS	1
24.11	SILT FENCE - TYPE A (SFA)	LF	500
24.22	INLET SEDIMENT TRAP (SB-1)	EA	2

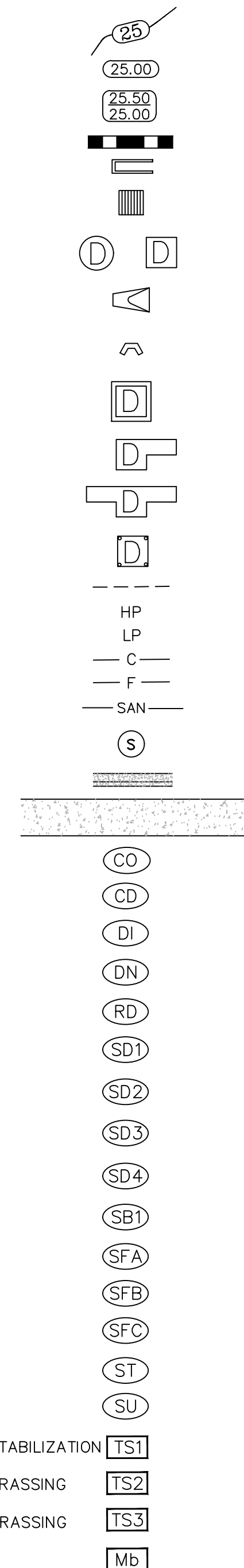
- GENERAL NOTES:
1. SAW-CUT TO BE PAID FOR UNDER "SITE PREPARATION".
  2. ANY DEMOLITION OR REMOVAL ITEMS TO BE PAID FOR UNDER "SITE PREPARATION".

EXISTING

- IRON ROD ○ IR
- PK NAIL ○ PK
- R.R. SPIKE ○ RR(Sp)
- CONC. MONUMENT □ CM
- WATER VALVE ☒ WV
- WATER METER □ WM
- FIRE HYDRANT ∅ FH
- GAS METER □ GM
- GAS VALVE ⊗ GV
- CLEAN-OUT ○ CO
- GUARD POST (BOLLARD) ● GP
- SIGN POST
- BENCHMARK
- STORM SEWER MANHOLE ○ D
- SANITARY SEWER MANHOLE ○ S
- TELEPHONE MANHOLE ○ T
- ELECTRIC MANHOLE ○ E
- TELEPHONE BOX □ TB
- ELECTRIC BOX □ EB
- CABLE BOX □ CB
- UTILITY POLE ○ UP
- GUY WIRE ○ GW
- LIGHT POLE ○ LP
- POST OR POLE (TYPE AS NOTED) ○ PP
- MAILBOX ○ MB
- DECIDUOUS TREE
- EVERGREEN/CONIFEROUS TREE
- BUSH
- PROPERTY LINE
- SETBACK LINE
- EASEMENT LINE
- CURB
- FENCE
- OVERHEAD ELECTRIC
- OVERHEAD TELEPHONE
- OVERHEAD CABLE
- UNDERGROUND TELEPHONE
- UNDERGROUND ELECTRIC
- UNDERGROUND CABLE
- WATER LINE
- SEWER LINE
- GAS LINE
- STORM SEWER/CULVERT
- EDGE OF WOODS
- CONTOUR LINE

PROPOSED

- PROPOSED CONTOUR
- PROPOSED SPOT ELEVATION
- PROPOSED SPOT CURB ELEVATION
- STORM SEWER - PIPE
- STORM SEWER - MITERED END SECTION
- STORM SEWER - GRATE INLET
- STORM SEWER - JUNCTION BOX
- STORM SEWER - FLARED END SECTION
- STORM SEWER - HEADWALL
- STORM SEWER - NO WING
- STORM SEWER - SINGLE WING
- STORM SEWER - DOUBLE WING
- STORM SEWER - AREA INLET
- GRADE BREAK LINE
- HIGH POINT
- LOW POINT
- CUT LINE
- FILL LINE
- SANITARY SEWER PIPE
- SANITARY SEWER MANHOLE
- PROPOSED CURB
- PROPOSED CONCRETE
- CONSTRUCTION - ENTRANCE/EXIT
- CHECK DAM
- DIVERSION BERM
- DOWNDRAIN STRUCTURE - TEMPORARY
- ROCK DAM
- SEDIMENT BARRIER - SILT FENCE
- SEDIMENT BARRIER - GRAVEL RING
- SEDIMENT BARRIER - BLOCK & GRAVEL
- SEDIMENT BARRIER - BLOCK
- TEMPORARY SEDIMENT BASIN
- SILT FENCE - TYPE A
- SILT FENCE - TYPE B
- SILT FENCE - TYPE C
- STORM DRAIN OUTLET PROTECTION
- SURFACE ROUGHENING
- DISTURBED AREA STABILIZATION -TEMPORARY STABILIZATION
- DISTURBED AREA STABILIZATION -TEMPORARY GRASSING
- DISTURBED AREA STABILIZATION -PERMANENT GRASSING
- MATTING/BLANKETS



CITY OF LITTLE ROCK, ARKANSAS  
 SHANNON DR. DRAINAGE IMPROVEMENTS  
 GENERAL NOTES, LEGEND AND QUANTITIES

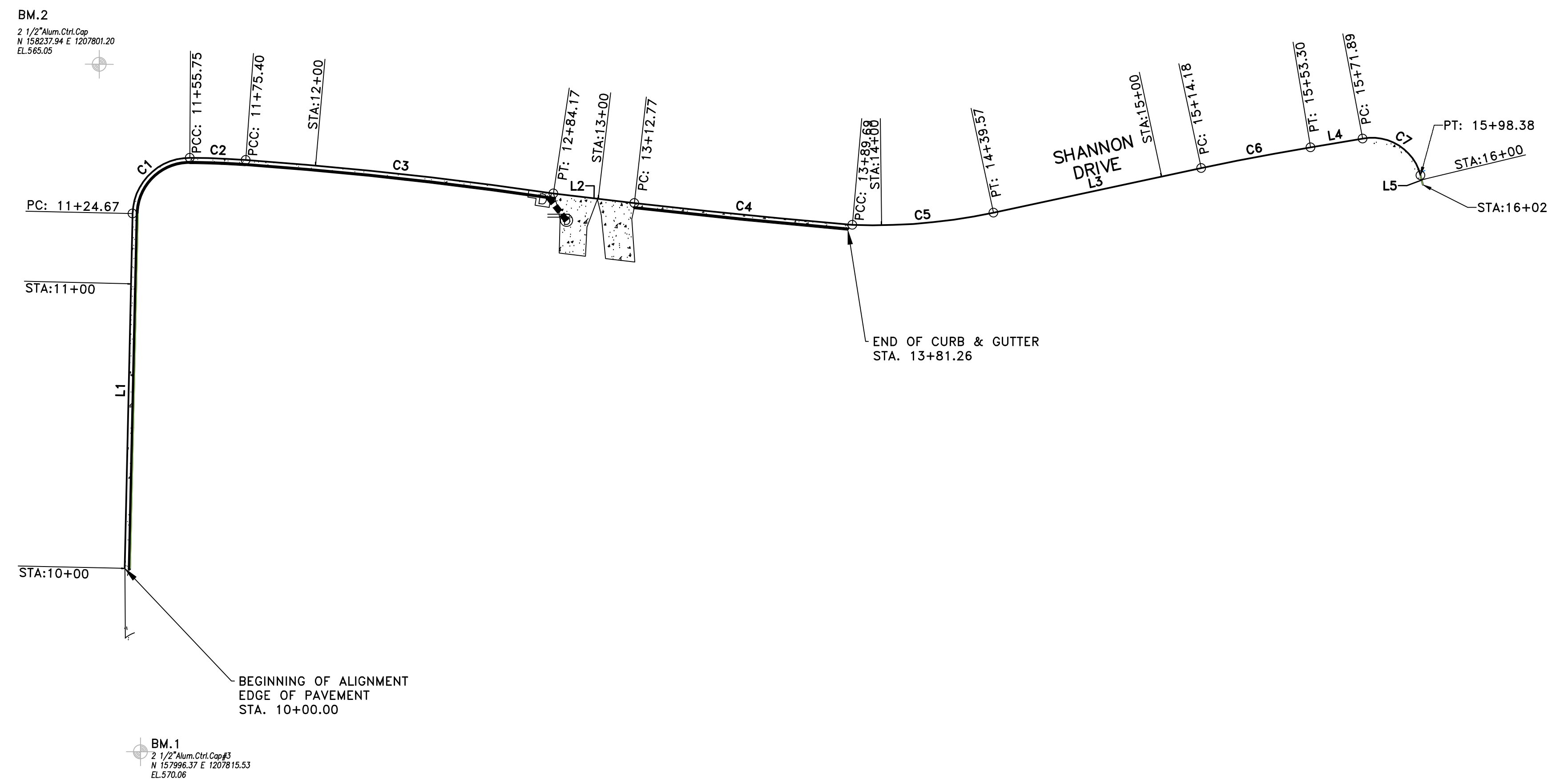
DEPARTMENT OF PUBLIC WORKS  
 CIVIL ENGINEERING  
 701 W. MARKHAM  
 LITTLE ROCK, ARKANSAS 72201



DRAWN BY  
 DESIGNED  
 JRH  
 CHECKED  
 JRH  
 DATE  
 1/15/19  
 SCALE  
 NTS  
 PROJECT NO.  
 03-17-ST-163  
 SHEET NO.  
 C2

REVISIONS	DATE

**CITY OF LITTLE ROCK, ARKANSAS**  
**SHANNON DR. DRAINAGE IMPROVEMENTS**  
**LAYOUT**

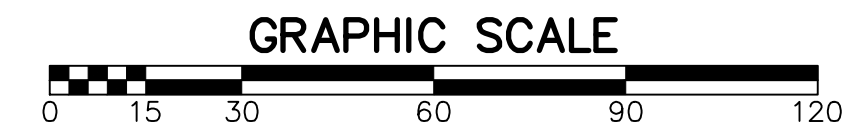
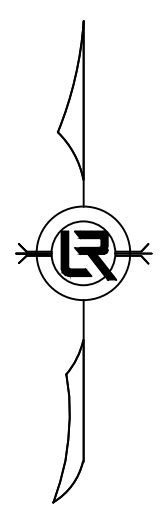


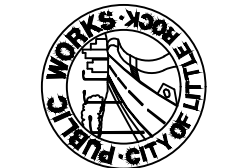
*Line Table: Alignments*

Line #	Length	Direction	Start Point	End Point
L1	124.669	N1° 16' 13.80"E	(1207810.1720,158060.8730)	(1207812.9362,158185.5116)
L2	28.600	S83° 20' 17.88"E	(1207960.7670,158192.4984)	(1207989.1741,158189.1805)
L3	74.610	N77° 55' 02.16"E	(1208115.2853,158185.8055)	(1208188.2425,158201.4232)
L4	18.596	N80° 31' 52.32"E	(1208226.6599,158208.7348)	(1208245.0020,158211.7940)
L5	3.412	S13° 31' 27.06"E	(1208265.3202,158198.9166)	(1208266.1182,158195.5990)

*Curve Table: Alignments*

Curve #	Radius	Length	Chord Direction	Start Point	End Point
C1	20.000	31.084	N45° 47' 41.76"E	(1207812.9362,158185.5116)	(1207833.0428,158205.0678)
C2	300.784	19.646	S87° 48' 34.07"E	(1207833.0428,158205.0678)	(1207852.6710,158204.3170)
C3	1430.671	108.766	S83° 45' 37.24"E	(1207852.6710,158204.3170)	(1207960.7670,158192.4984)
C4	3188.047	76.922	S84° 17' 06.59"E	(1207989.1741,158189.1805)	(1208065.7123,158181.5210)
C5	200.214	49.887	N85° 03' 37.06"E	(1208065.7123,158181.5210)	(1208115.2853,158185.8055)
C6	857.275	39.110	N79° 13' 27.24"E	(1208188.2425,158201.4232)	(1208226.6599,158208.7348)
C7	17.582	26.491	S57° 38' 02.65"E	(1208245.0020,158211.7940)	(1208265.3202,158198.9166)



  
 DEPARTMENT OF PUBLIC WORKS  
 CIVIL ENGINEERING  
 701 W. MARKHAM  
 LITTLE ROCK, ARKANSAS 72201

  
 JOHN R. HEARD

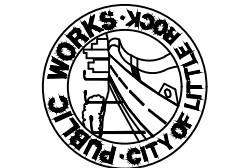
**DRAWN BY**  
DESIGNED  
JRH  
CHECKED  
JRH  
DATE  
1/15/19  
SCALE  
1"=20'  
PROJECT NO.  
03-17-ST-163  
SHEET NO.  
C3

C:\working\0317163\SHANNON DR PLANS - VE.dwg, C:\LAYOUT\10162019\03-17-ST-163-AM-LLIGHT10

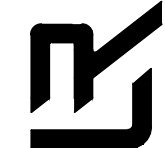
REVISIONS	DATE

CITY OF LITTLE ROCK, ARKANSAS  
SHANNON DR. DRAINAGE IMPROVEMENTS

PROPOSED

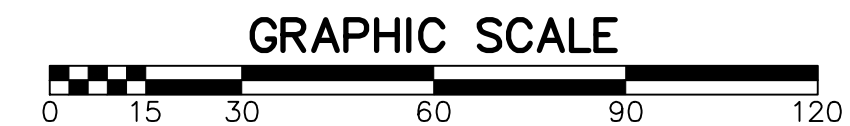
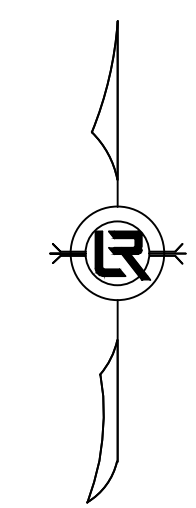
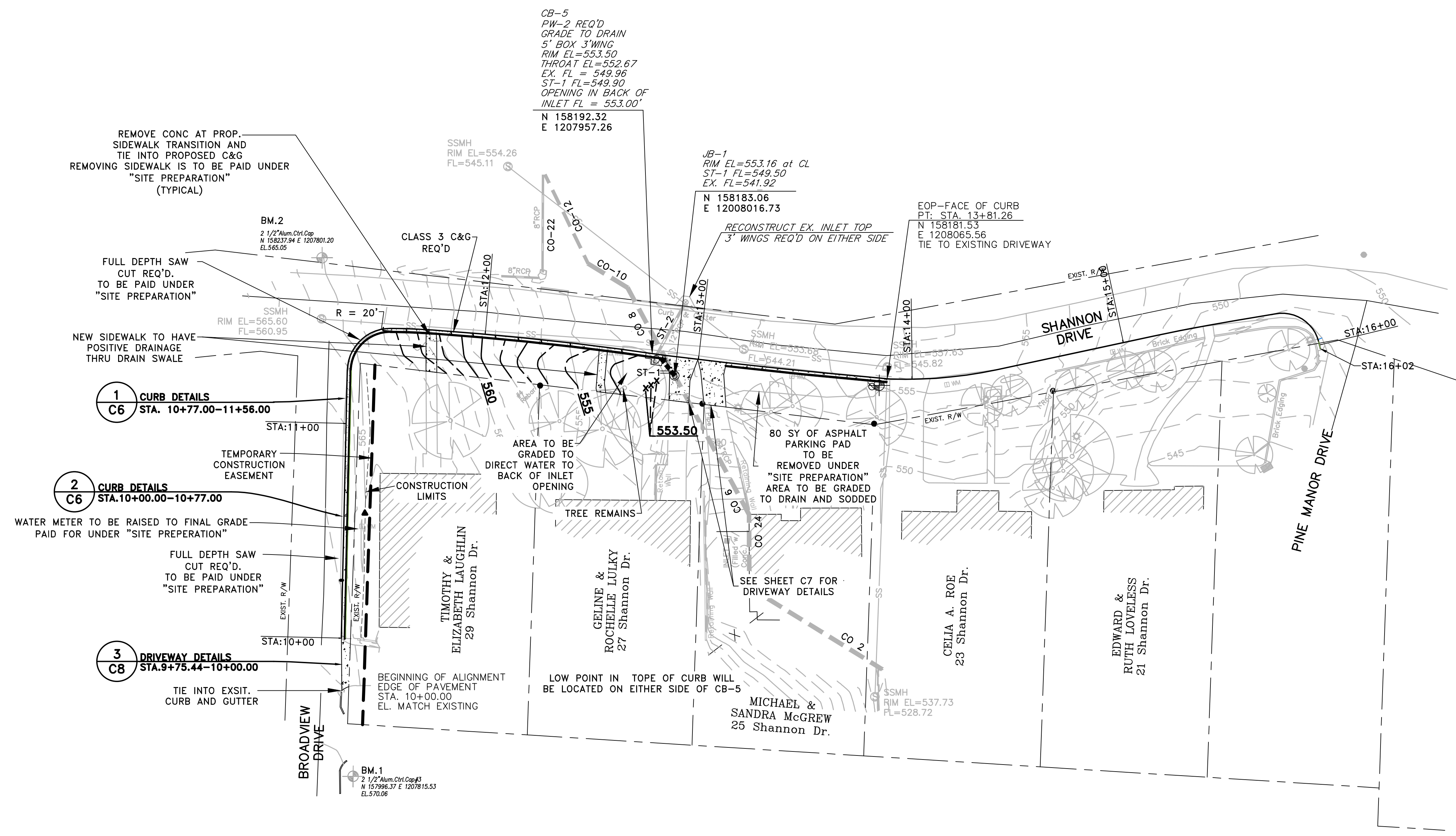


DEPARTMENT OF PUBLIC WORKS  
CIVIL ENGINEERING  
701 W. MARKHAM  
LITTLE ROCK, ARKANSAS 72201



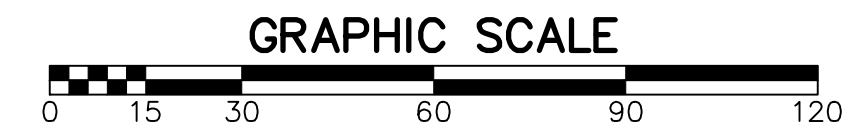
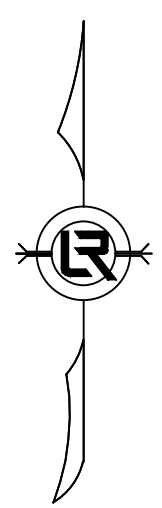
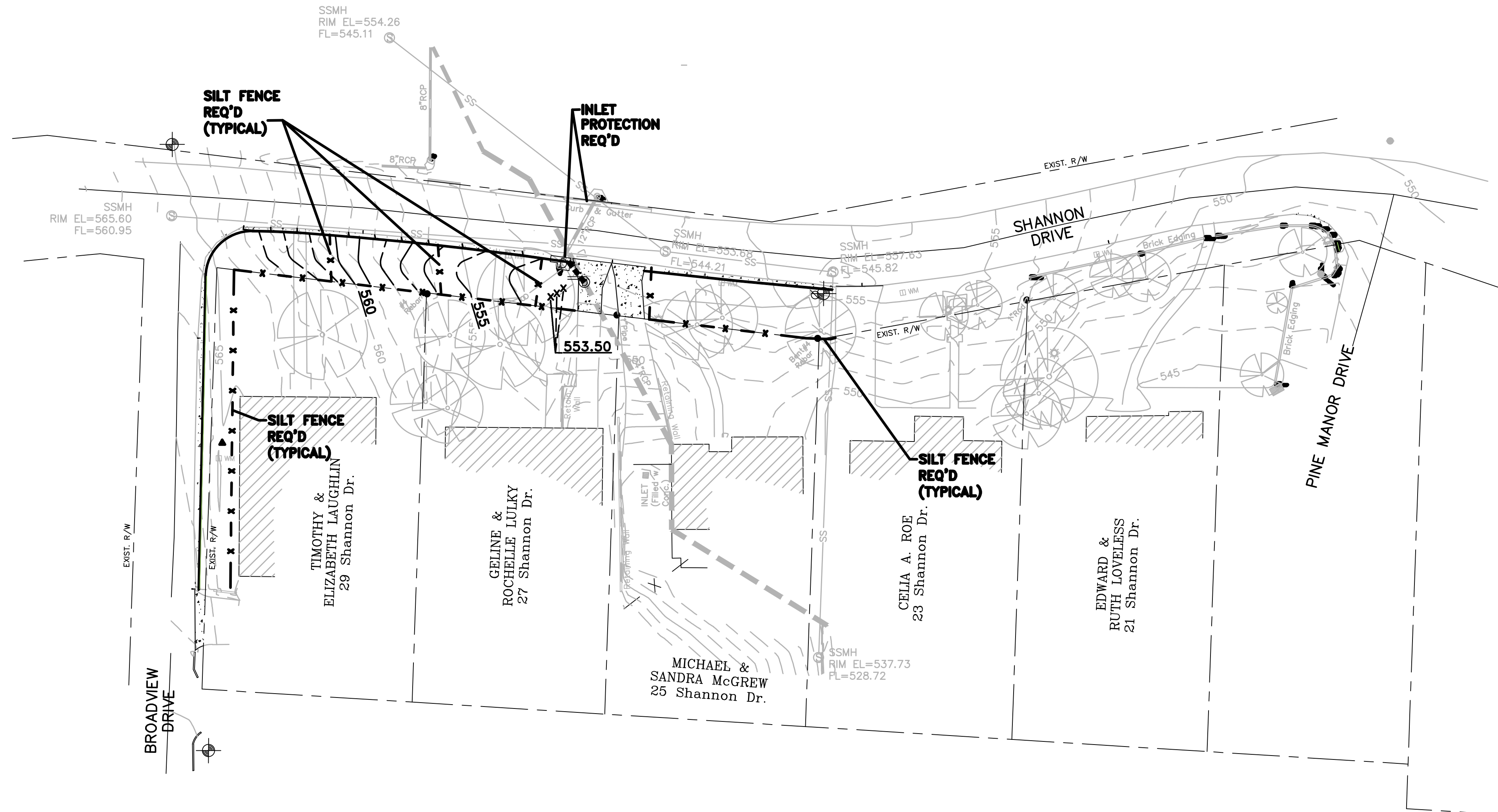

STATE OF ARKANSAS  
LICENSED PROFESSIONAL ENGINEER  
JOHN R. HEARD

DRAWN BY	JRH
DESIGNED	JRH
CHECKED	JRH
DATE	1/15/19
SCALE	1"=20'
PROJECT NO.	03-17-ST-163
SHEET NO.	C4



C:\working\031716\163\SHANNON DR PLANS\_V.E.dwg, CT PROPOSED, 10/10/2018 8:51:18 AM, LLLIGHTO

C:\working\031716\1769\SHANNON DR PLANS\_V.E.dwg, CS Erosion Control, 10/16/2019 9:00:30 AM, LJJG:HFQ



REVISIONS	DATE

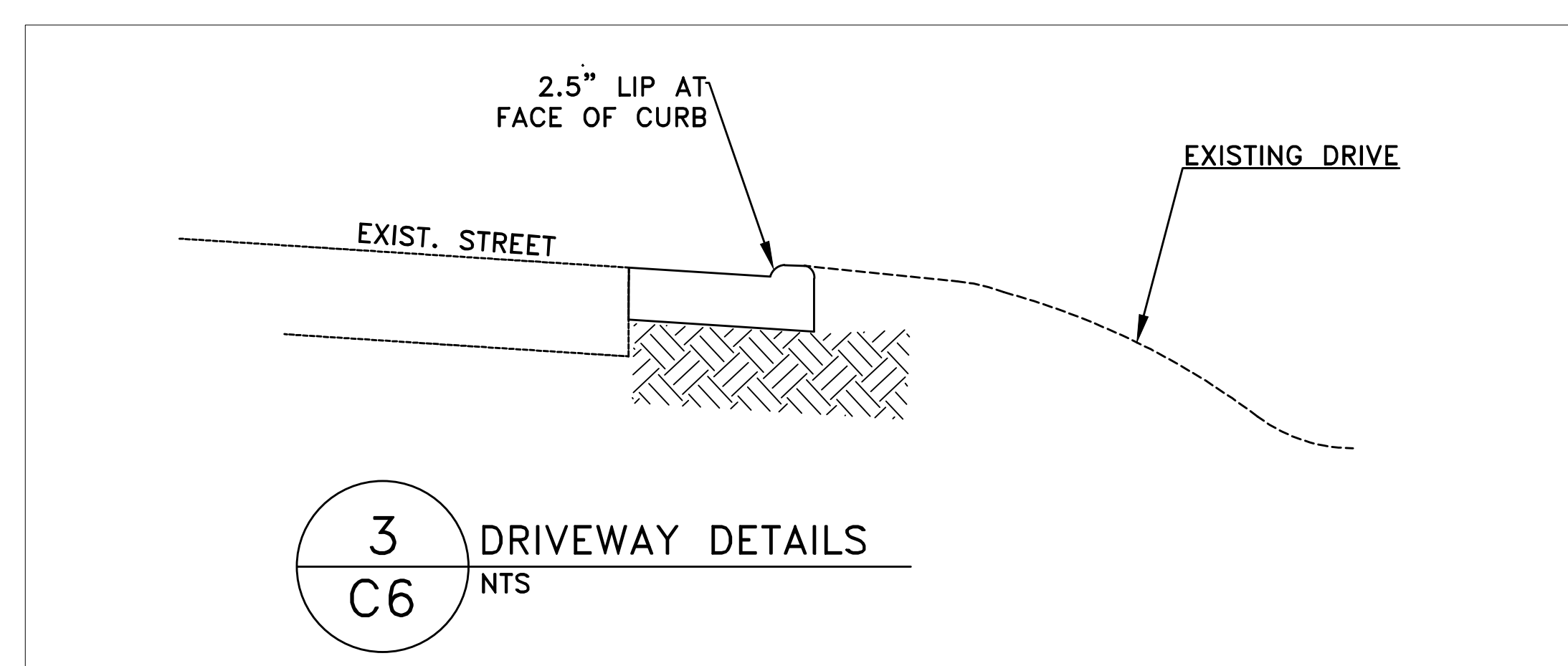
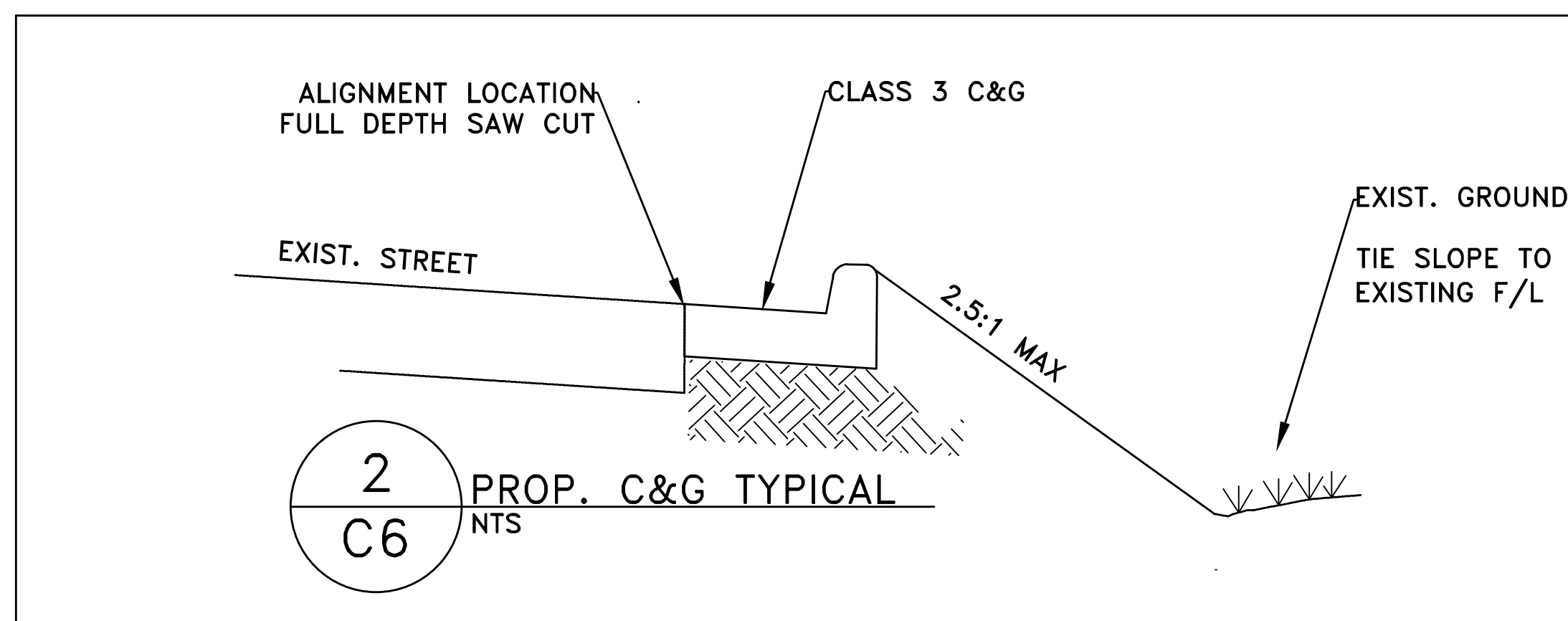
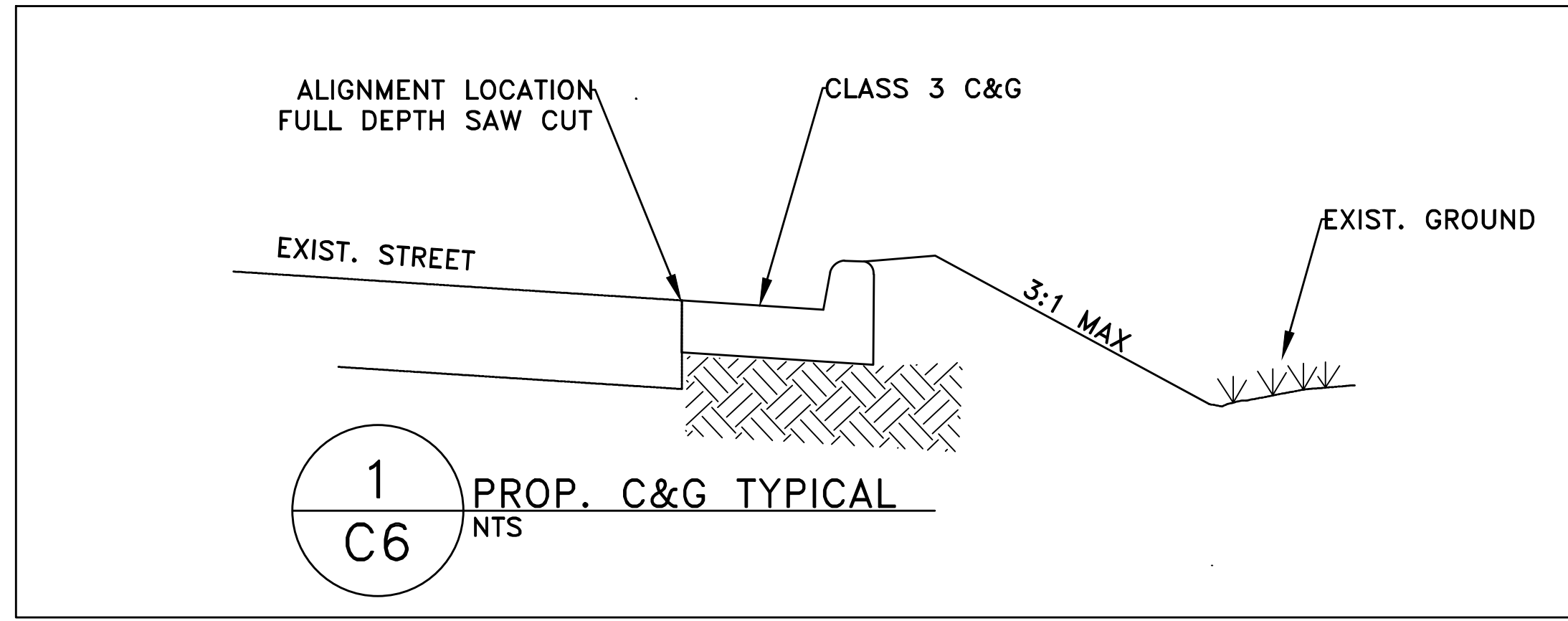
CITY OF LITTLE ROCK, ARKANSAS  
SHANNON DR. DRAINAGE IMPROVEMENTS  
EROSION CONTROL

DEPARTMENT OF PUBLIC WORKS  
CIVIL ENGINEERING  
701 W. MARKHAM  
LITTLE ROCK, ARKANSAS 72201



<b>DRAWN BY</b>	JRH
<b>DESIGNED</b>	JRH
<b>CHECKED</b>	JRH
<b>DATE</b>	1/15/19
<b>SCALE</b>	1"=20'
<b>PROJECT NO.</b>	03-17-ST-163
<b>SHEET NO.</b>	C5

REVISIONS	DATE

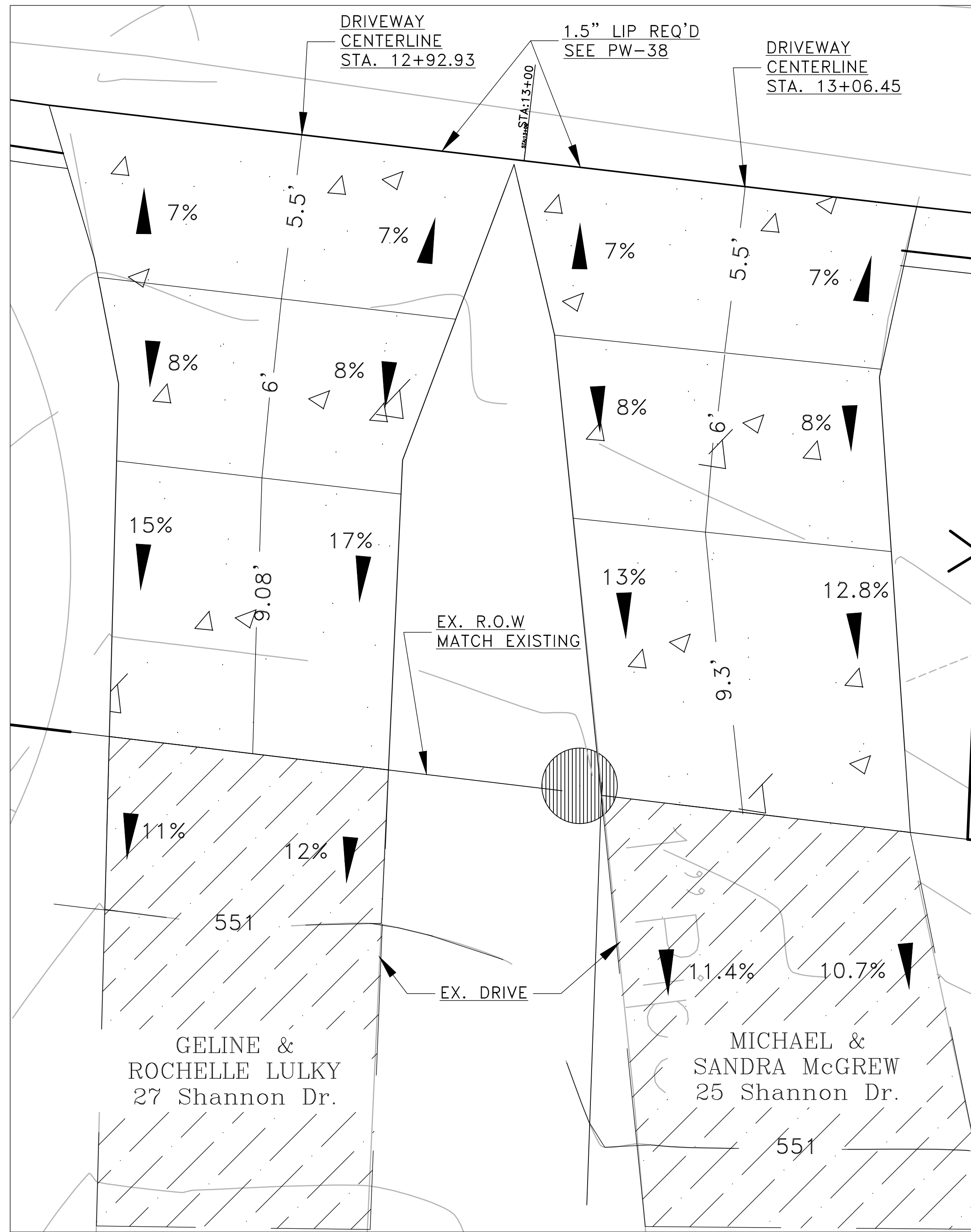


CITY OF LITTLE ROCK, ARKANSAS  
SHANNON DR. DRAINAGE IMPROVEMENTS  
DETAILS

DEPARTMENT OF PUBLIC WORKS  
CIVIL ENGINEERING  
701 W. MARKHAM  
LITTLE ROCK, ARKANSAS 72201

STATE OF ARKANSAS  
LICENSED PROFESSIONAL ENGINEER  
JOHN R. HEARD  
No. 19009

DRAWN BY	
DESIGNED	JRH
CHECKED	JRH
DATE	1/15/19
SCALE	1"=20'
PROJECT NO.	03-17-ST-163
SHEET NO.	C6



DRIVEWAY DETAILS  
PW-38 REQUIRED

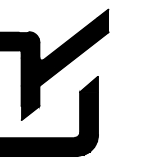
C:\working\0317163\SHANNON DR PLANS\_V.E.dwg, C7 DRIVEWAY DETAILS, 10/16/2019 9:01:47 AM, LUGRHF0

REVISIONS	DATE

CITY OF LITTLE ROCK, ARKANSAS  
SHANNON DR. DRAINAGE IMPROVEMENTS  
DRIVEWAY DETAILS



DEPARTMENT OF PUBLIC WORKS  
CIVIL ENGINEERING  
701 W. MARKHAM  
LITTLE ROCK, ARKANSAS 72201



DRAWN BY

DESIGNED

JRH

CHECKED

JRH

DATE

1/15/19

SCALE

1"=20'

PROJECT NO.

03-17-ST-163

SHEET NO.

C7