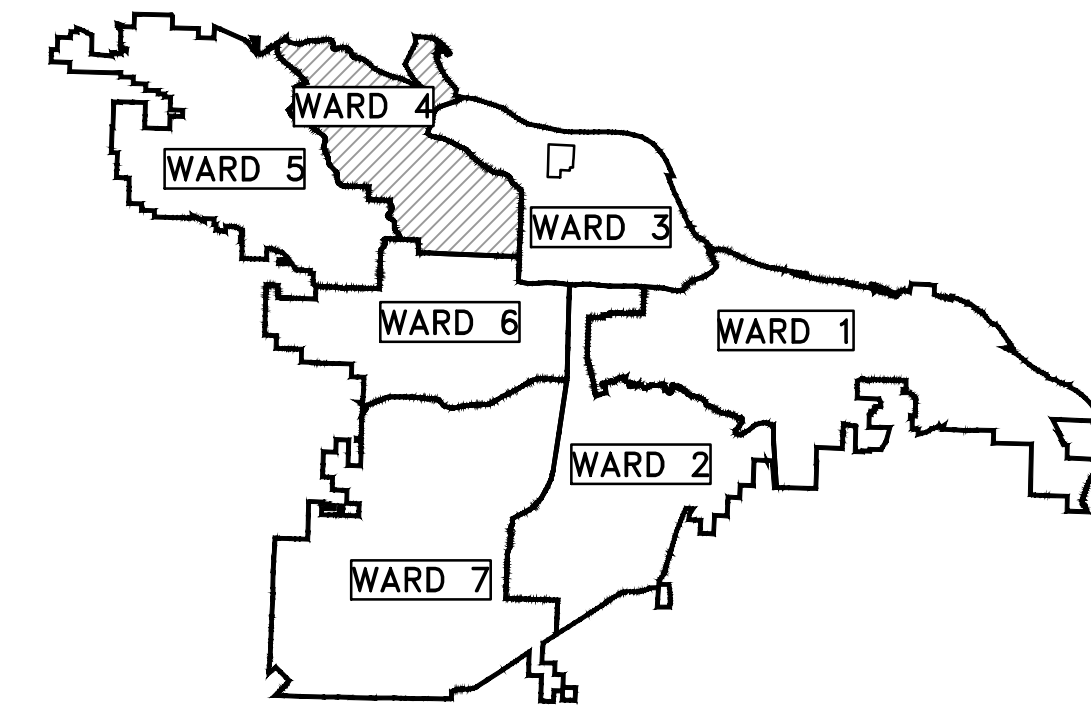


# CLR PROJECT # 04-17-ST-172

## HARRIS RD IMPROVEMENTS

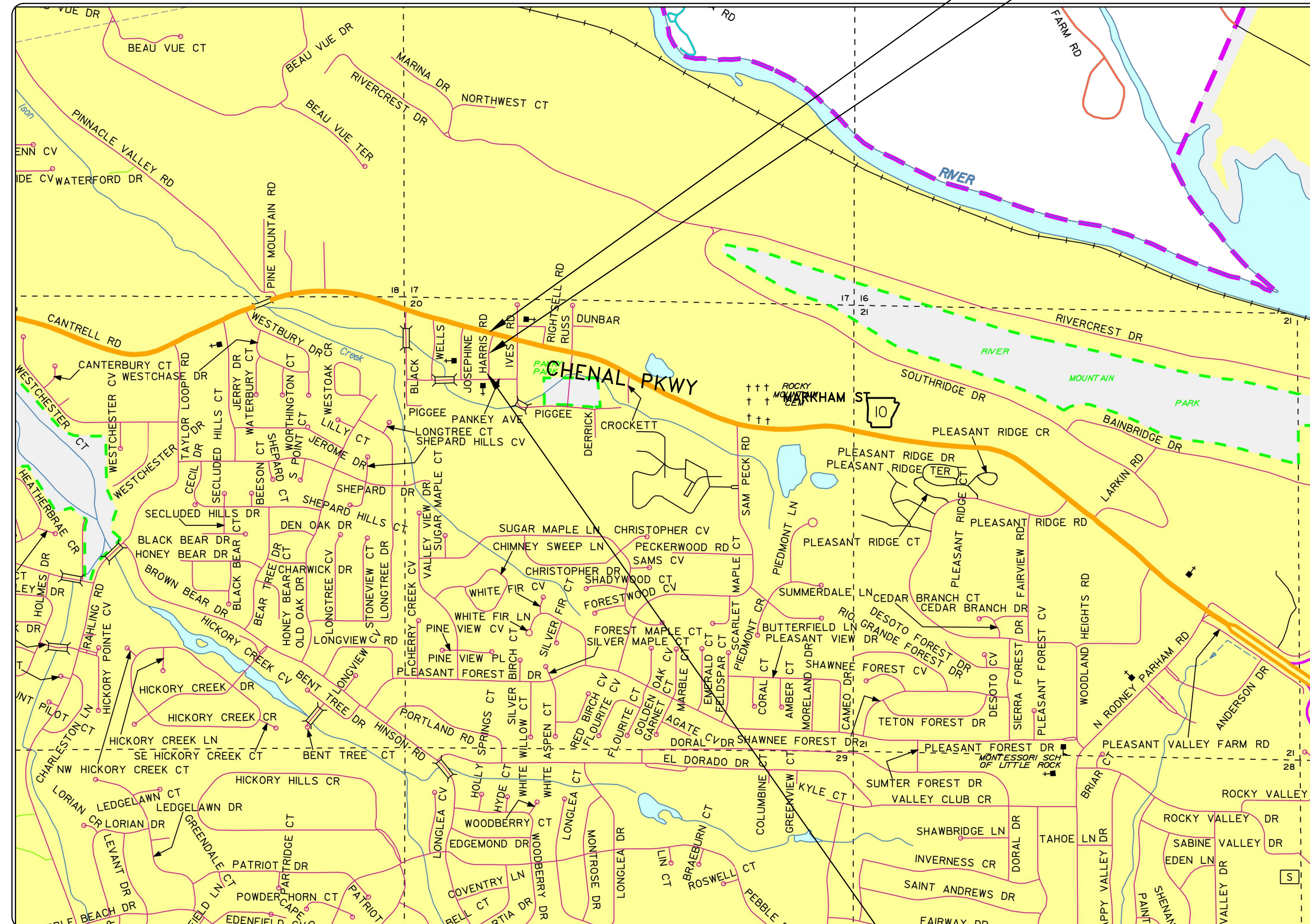
### PANKEY AVE. (NORTH) TO HWY 10



PROJECT LOCATION - WARD 4

END PROJECT STA. 11+96

BEGIN PROJECT STA. 10+00



SHEET LIST TABLE	
SHEET NO.	TITLE
C1	COVER SHEET
C2	LEGEND
C3	TYPICAL SECTION
C4	PLAN - PROFILE
C5	SURVEY CONTROL
C6	EROSION CONTROL
C7	DRAINAGE
C8	X-SECTIONS



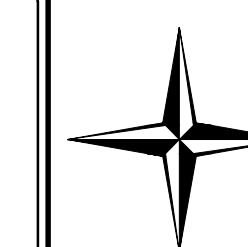
**2019-2021**  
**BOND PROGRAM**

DEPARTMENT OF PUBLIC WORKS  
CIVIL ENGINEERING  
701 WEST MARKHAM STREET  
LITTLE ROCK, ARKANSAS 72201

PROJECT  
LOCATION  
1" = 1000'



Know what's below.  
Call before you dig.



**CENTRAL ARKANSAS ENGINEERING**  
A PROFESSIONAL LIMITED LIABILITY COMPANY

CIVIL ENGINEERING | SURVEYING | GIS

1012 AUTUMN ROAD, SUITE #2 | LITTLE ROCK, ARKANSAS 72211  
OFFICE: 501.227.4459 | FAX: 501.227.3820 | EMAIL: CAENGR@SBCGLOBAL.NET  
www.CentralArkansasEngineering.com

REVISIONS	DATE

15% Submittal

CITY OF LITTLE ROCK, ARKANSAS  
HARRIS RD IMPROVEMENTS

COVER

DEPARTMENT OF PUBLIC WORKS  
CIVIL ENGINEERING  
701 W. MARKHAM  
LITTLE ROCK, ARKANSAS 72201



DRAWN BY  
ZR  
DESIGNED  
RH  
CHECKED  
RH  
DATE  
12-10-18  
SCALE  
Value

PROJECT NO.  
CLR # 04-17-ST-172

SHEET NO.

C1

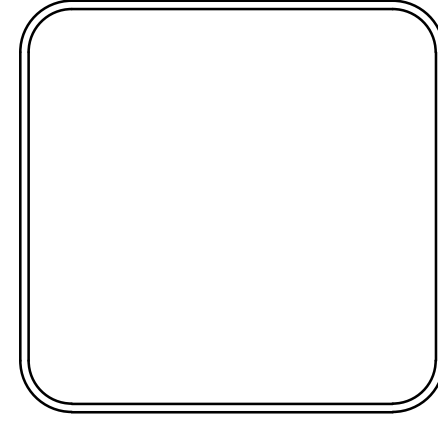


REVISIONS	DATE

15% Submittal

CITY OF LITTLE ROCK, ARKANSAS  
HARRIS RD IMPROVEMENTS  
LEGEND

DEPARTMENT OF PUBLIC WORKS  
CIVIL ENGINEERING  
701 W. MARKHAM  
LITTLE ROCK, ARKANSAS 72201



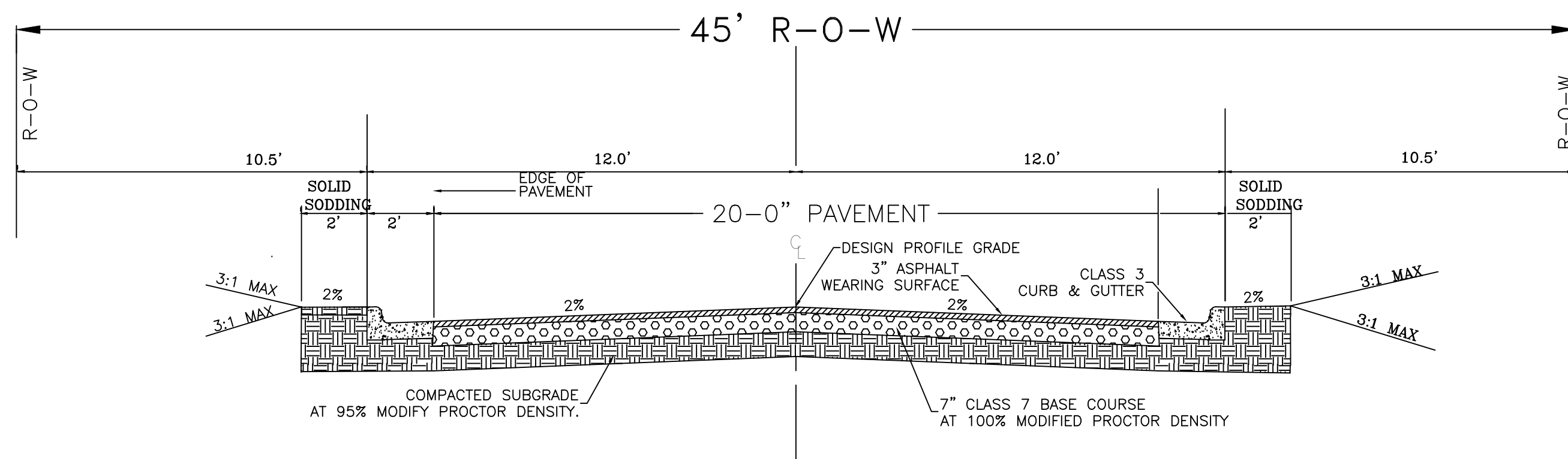
DRAWN BY  
**ZR**  
DESIGNED  
**RH**  
CHECKED  
**RH**  
DATE  
**12-10-18**  
SCALE  
Value  
PROJECT NO.  
**CLR # 04-17-ST-172**  
SHEET NO.  
**C2**

CLR PROJECT # 04-17-ST-172			
HARRIS STREET IMPROVEMENTS 15% SUBMITTAL			
10-Dec-18			
ITEM #	ITEM DESCRIPTION	UNIT	QUANTITY
2.01	SITE PREPARATION	LS	1
2.02	CLEARING AND GRUBBING TREEMS	LS	1
3.01	UNCLASSIFIED EXCAVATION	CY	144
3.30	BORROW MATERIAL	CY	190
3.40	TOPSOIL	CY	85
4.01	AGGREGATE BASE COURSE	TON	164
6.01	ACHM SURFACE COURSE	TON	78
8.03	CONCRETE CURB AND GUTTER (CLASS 3)	LF	414
10.04	CURB INLET - 4' BOX	EA	2
11.01	REINFORCED CONCRETE PRECAST BOX CULVERT 4' X 5'	LF	135
10.70	JUNCTION BOX IN ROADWAY 6' X 15'	EA	1
13.18	CROSS DRAIN PIPE 18"	LF	24
13.19	SIDE DRAIN PIPE 18"	LF	6
14.01	SOLID SOD, BERMUDA	SY	160
16.01	MAINTANCE OF TRAFFIC	LS	1
17.01	PAVEMENT REPAIRS	SY	20
19.01	FINAL CLEANUP	LS	1
24.07	SEDIMENT BARRIER, GRAVEL RING	EA	4
24.11	SILT FENCE - TYPE A (SFA)	LF	414
24.18	DISTURBED AREA STABILIZATION - TEMPORARY STABILIZATION(TS1)	AC	0.2
29.10	PROJECT INFORMATION KIOSK (PW-18)	LS	1
606.01	FLARED END SECTION 18"	EA	1

NOTES:

THIS AREA IS FOR ANY SPECIAL CONDITIONS OR NOTES THAT NEED TO BE ADDED TO THE PLAN SET THAT ARE NOT COVERED IN THE BID/CONTRACT DOCUMENTS OR STANDARD SPECIFICATIONS.

EXISTING		PROPOSED
IRON ROD	○ IR	PROPOSED CONTOUR
PK NAIL	○ PK	PROPOSED SPOT ELEVATION
R.R. SPIKE	○ RR(Sp)	PROPOSED SPOT CURB ELEVATION
CONC. MONUMENT	□ CM	STORM SEWER – PIPE
WATER VALVE	⊗ WV	STORM SEWER – MITERED END SECTION
WATER METER	□ WM	STORM SEWER – GRATE INLET
FIRE HYDRANT	⊕ FH	STORM SEWER – JUNCTION BOX
GAS METER	⊕ GM	STORM SEWER – FLARED END SECTION
GAS VALVE	⊕ GV	STORM SEWER – HEADWALL
CLEAN-OUT	○ CO	STORM SEWER – SINGLE WING
GUARD POST (BOLLARD)	• GP	STORM SEWER – DOUBLE WING
SIGN POST	⊕	STORM SEWER – AREA INLET
BENCHMARK	⊕	GRADE BREAK LINE
STORM SEWER MANHOLE	⊕	HIGH POINT
SANITARY SEWER MANHOLE	⊕	LOW POINT
TELEPHONE MANHOLE	⊕	CUT LINE
ELECTRIC MANHOLE	⊕	FILL LINE
TELEPHONE BOX	⊕	SANITARY SEWER PIPE
ELECTRIC BOX	⊕	SANITARY SEWER MANHOLE
CABLE BOX	⊕	PROPOSED CURB
UTILITY POLE	⊕	PROPOSED CONCRETE
GUY WIRE	⊕	CONSTRUCTION – ENTRANCE/EXIT
LIGHT POLE	⊕	CHECK DAM
POST OR POLE (TYPE AS NOTED)	⊕	DIVERSION BERM
MAILBOX	⊕	DOWNDRAIN STRUCTURE – TEMPORARY
DECIDUOUS TREE	⊕	ROCK DAM
EVERGREEN/CONIFEROUS TREE	⊕	SEDIMENT BARRIER – SILT FENCE
BUSH	⊕	SEDIMENT BARRIER – GRAVEL RING
PROPERTY LINE	⊕	SEDIMENT BARRIER – BLOCK & GRAVEL
SETBACK LINE	⊕	SEDIMENT BARRIER – BLOCK
EASEMENT LINE	⊕	TEMPORARY SEDIMENT BASIN
CURB	⊕	SILT FENCE – TYPE A
FENCE	⊕	SILT FENCE – TYPE B
OVERHEAD ELECTRIC	⊕	SILT FENCE – TYPE C
OVERHEAD TELEPHONE	⊕	STORM DRAIN OUTLET PROTECTION
OVERHEAD CABLE	⊕	SURFACE ROUGHENING
UNDERGROUND TELEPHONE	⊕	DISTURBED AREA STABILIZATION –TEMPORARY STABILIZATION
UNDERGROUND ELECTRIC	⊕	DISTURBED AREA STABILIZATION –TEMPORARY GRASSING
UNDERGROUND CABLE	⊕	DISTURBED AREA STABILIZATION –PERMANENT GRASSING
WATER LINE	⊕	MATting/BLANKETS
SEWER LINE	⊕	
GAS LINE	⊕	
STORM SEWER/CULVERT	⊕	
EDGE OF WOODS	⊕	
CONTOUR LINE	⊕	



**GENERAL NOTES**

1. IN AREAS TO RECEIVE BITUMINOUS PAVING, CONCRETE DRIVEWAYS, OR CURB AND GUTTER, SUBGRADE SHALL BE COMPACTED TO A DENSITY NOT LESS THAN 95% OF MAXIMUM DENSITY OBTAINED AT OPTIMUM MOISTURE CONTENT. (AASHTO T-180)
2. FOR AREAS OF SUBGRADE PREPARATION TO RECEIVE CONCRETE SIDEWALKS, SUBGRADE SHALL BE COMPACTED TO A DENSITY OF 90% MAXIMUM.(AASHTO T-180).
3. CRUSHED STONE-- MATERIAL IN EACH COURSE SHALL BE COMPACTED TO A DENSITY OF 100% MAXIMUM (AASHTO T-191).
4. CENTERLINE PROFILE WILL REQUIRE HEIGHT GREATER THAN CURB FOR SOME STREETS TO MAINTAIN 2% MINIMUM CROSS-SLOPE.

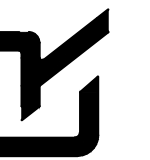
REVISIONS    DATE


15% Submittal

CITY OF LITTLE ROCK, ARKANSAS  
HARRIS RD IMPROVEMENTS

TYPICAL SECTIONS

DEPARTMENT OF PUBLIC WORKS  
CIVIL ENGINEERING  
701 W. MARKHAM  
LITTLE ROCK, ARKANSAS 72201



DRAWN BY

ZR

DESIGNED

RH

CHECKED

RH

DATE

12-10-18

SCALE

Value

PROJECT NO.

CLR # 04-17-ST-172

SHEET NO.

C3

REVISIONS	DATE

15% Submittal

CITY OF LITTLE ROCK, ARKANSAS  
HARRIS RD IMPROVEMENTS

PLAN PROFILE

DEPARTMENT OF PUBLIC WORKS  
CIVIL ENGINEERING  
701 W. MARKHAM



LITTLE ROCK, ARKANSAS 72201

DRAWN BY

ZR

DESIGNED

RH

CHECKED

RH

DATE

12-10-18

SCALE

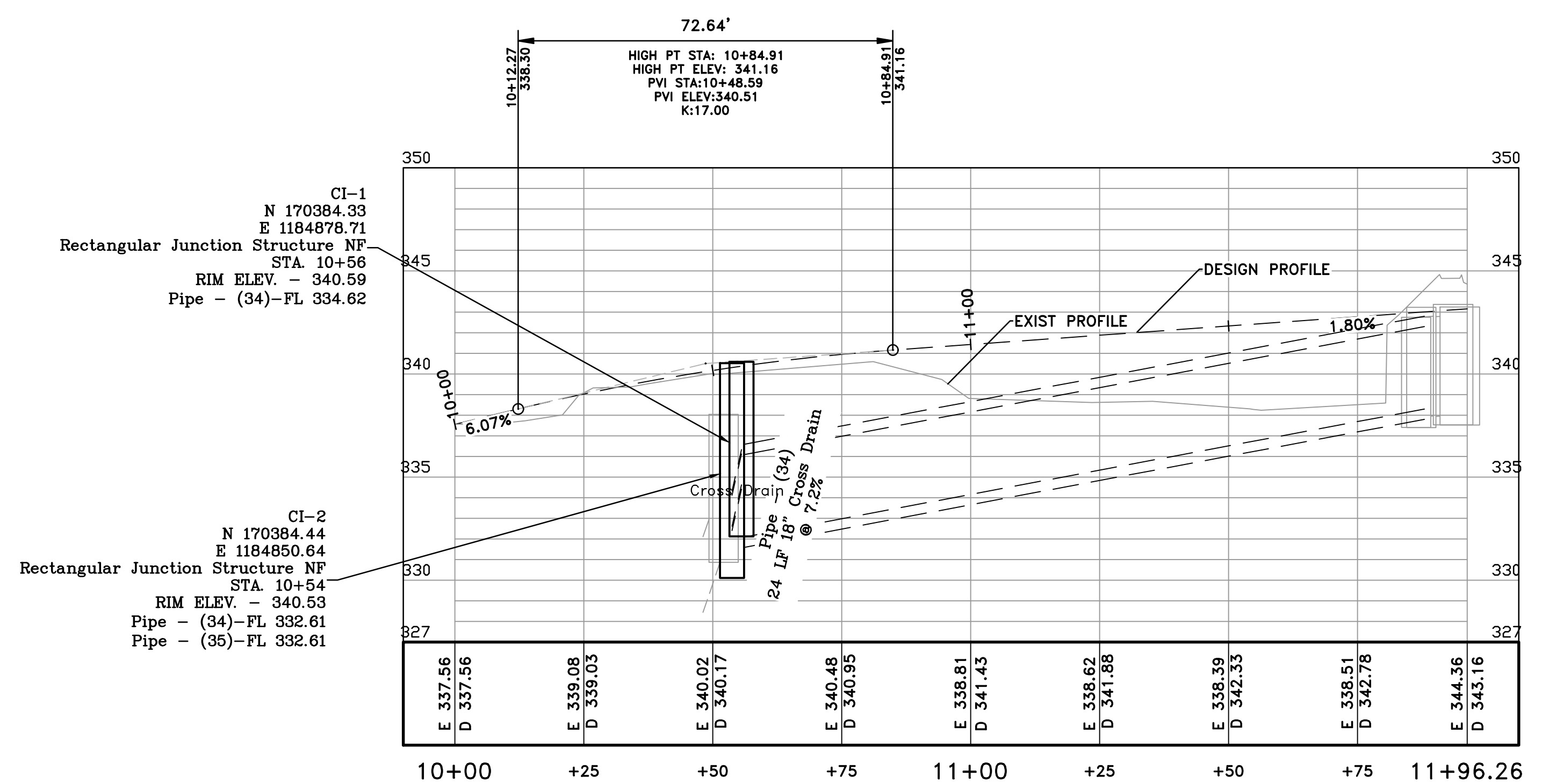
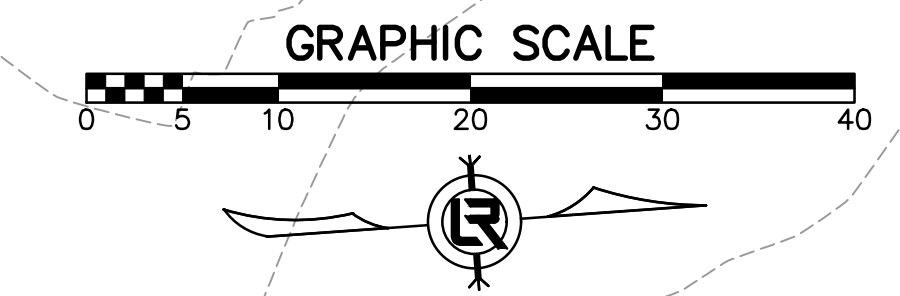
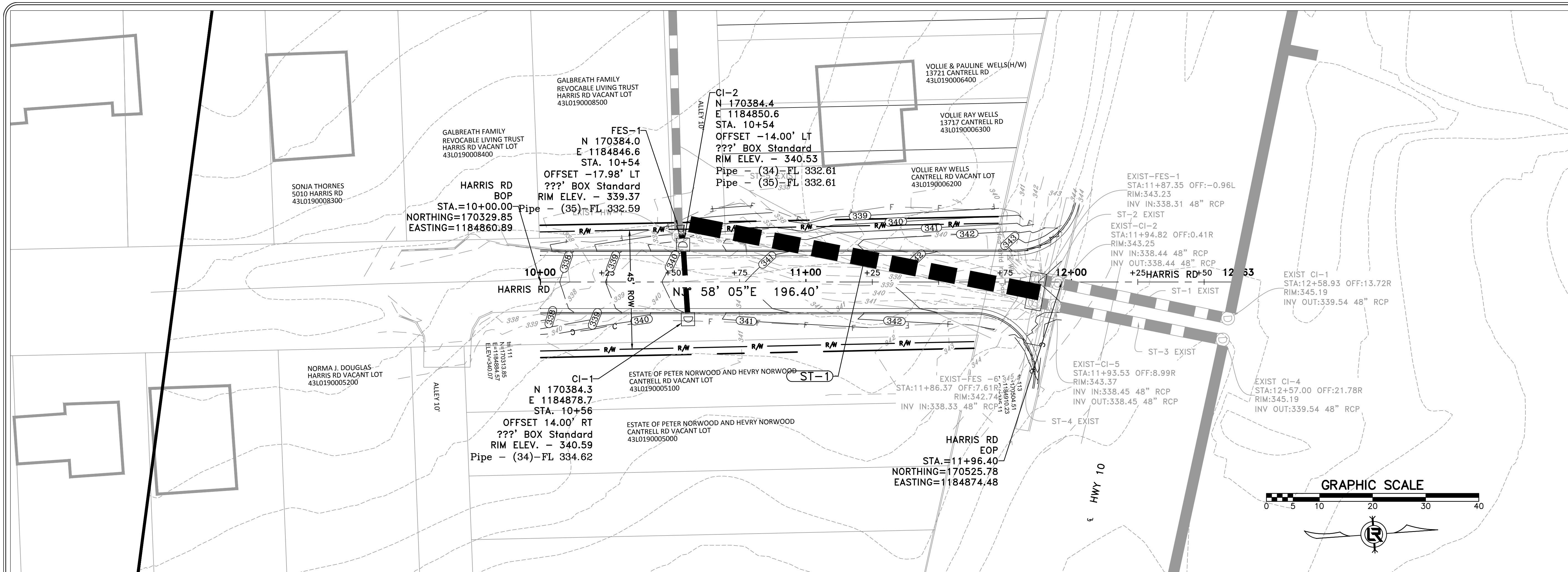
Value

PROJECT NO.

CLR # 04-17-ST-172

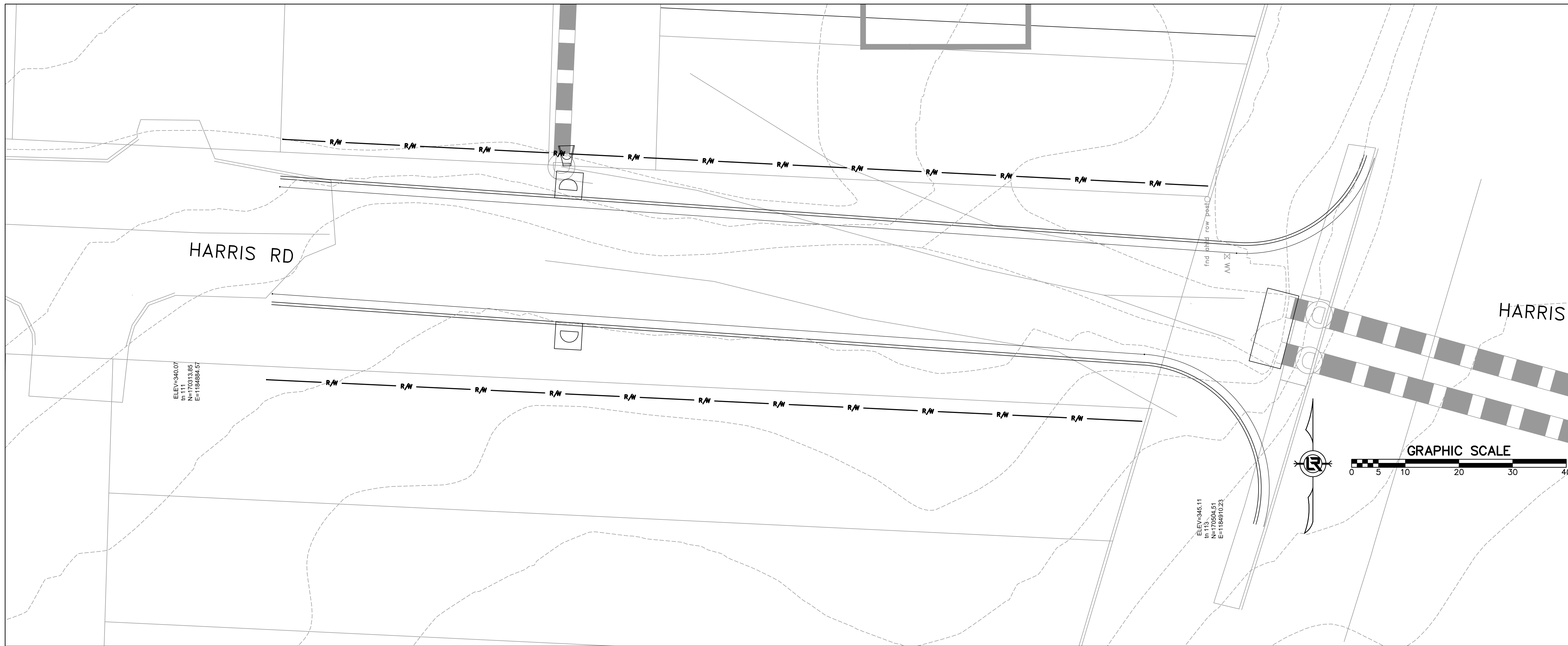
SHEET NO.

C4



H 1" = 20'  
V 1" = 5'

HARRIS RD PROFILE

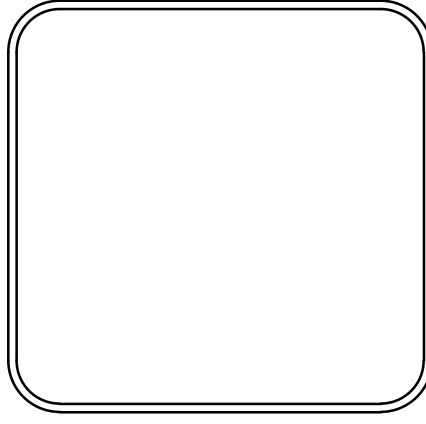


REVISIONS	DATE

15% Submittal

CITY OF LITTLE ROCK, ARKANSAS  
 HARRIS RD IMPROVEMENTS  
 SURVEY CONTROL

DEPARTMENT OF PUBLIC WORKS  
 CIVIL ENGINEERING  
 701 W. MARKHAM  
 LITTLE ROCK, ARKANSAS 72201



DRAWN BY ZR
DESIGNED RH
CHECKED RH
DATE 12-10-18
SCALE Value
PROJECT NO. CLR # 04-17-ST-172
SHEET NO. C5



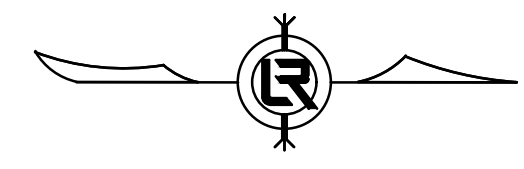
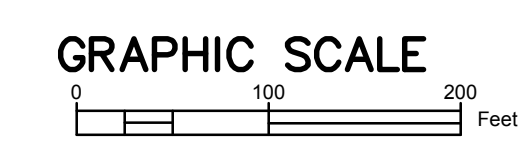


REVISIONS	DATE

15% Submittal

CITY OF LITTLE ROCK, ARKANSAS  
 HARRIS RD IMPROVEMENTS  
 DRAINAGE

DEPARTMENT OF PUBLIC WORKS  
 CIVIL ENGINEERING  
 701 W. MARKHAM  
 LITTLE ROCK, ARKANSAS 72201



DRAWN BY ZR
DESIGNED RH
CHECKED RH
DATE 12-10-18
SCALE Value
PROJECT NO. CLR # 04-17-ST-172
SHEET NO. C7