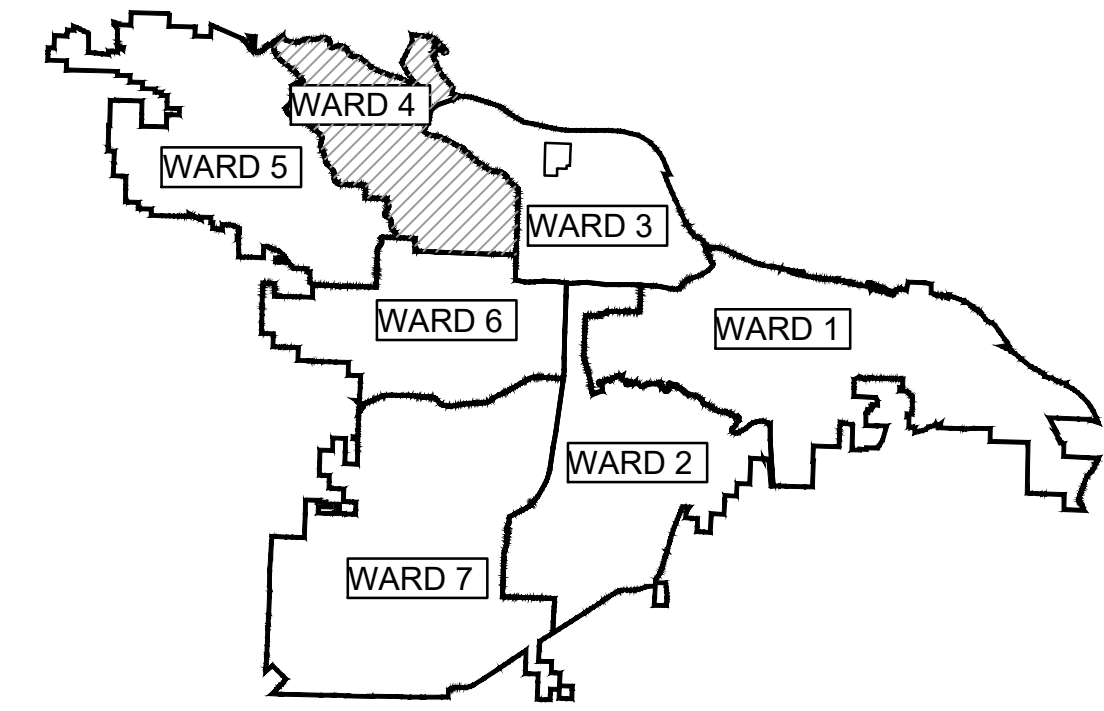


PROJECT 04-17-DR-171

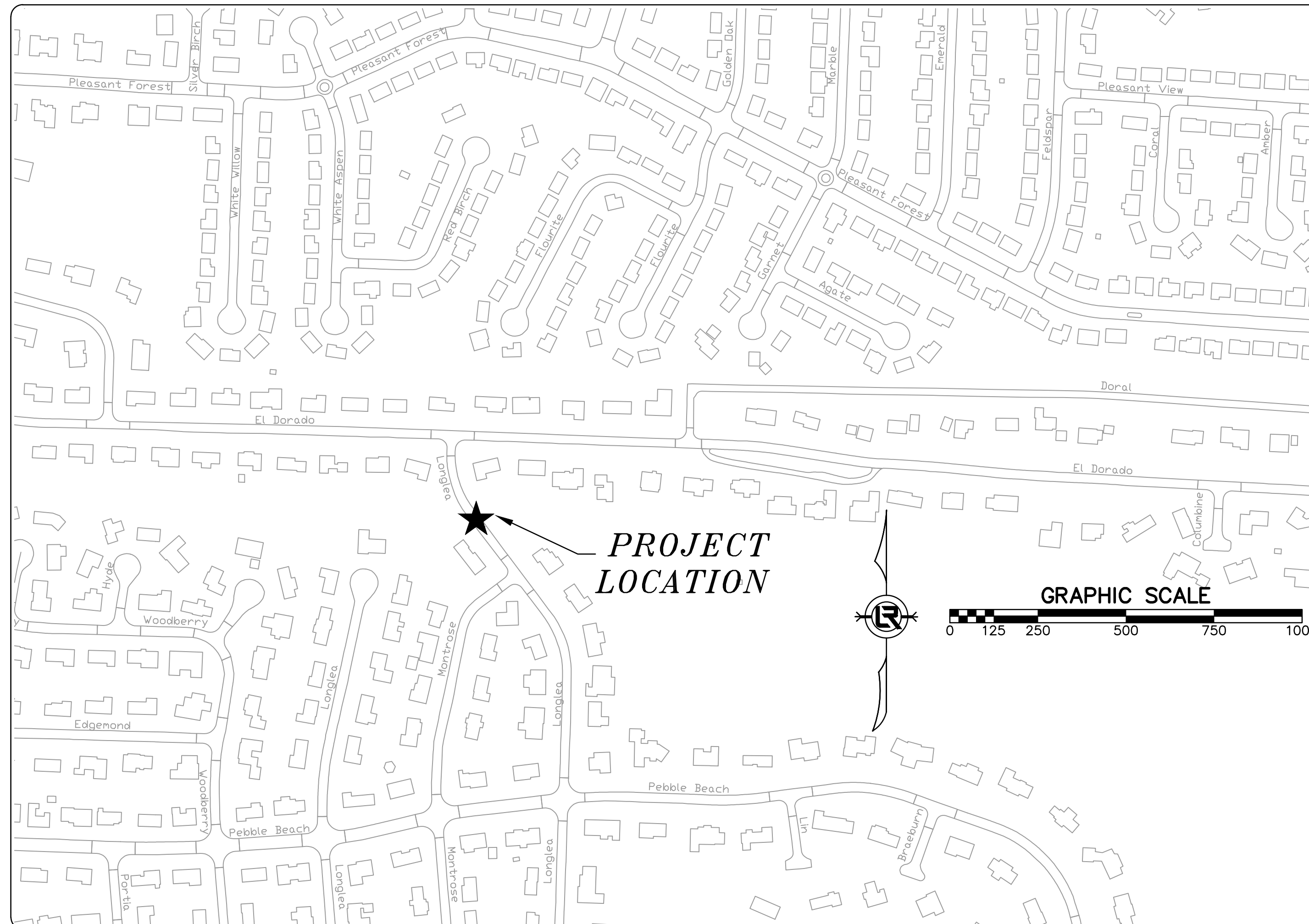
LONGLEA DRIVE

LITTLE ROCK, AR



PROJECT LOCATION - WARD 4

| SHEET NO. | TITLE |
|-----------|--|
| C1 | COVER SHEET |
| C2 | GENERAL NOTES, LEGENDS, AND QUANTITIES |
| C3 | EXISTING CONDITIONS |
| C4 | PLAN AND PROFILE SHEET |
| C5 | SPECIAL DETAILS I |
| C6 | SPECIAL DETAILS II |
| C7 | TRAFFIC CONTROL |



60%
SUBMITTAL



Know what's below.
Call before you dig.

2019-2021
BOND PROGRAM

DEPARTMENT OF PUBLIC WORKS
CIVIL ENGINEERING
701 WEST MARKHAM STREET
LITTLE ROCK, ARKANSAS 72201



FTN ASSOCIATES LTD.
LITTLE ROCK, AR

REVISIONS DATE

CITY OF LITTLE ROCK, ARKANSAS
LONGLEA DRIVE
COVER SHEET

DEPARTMENT OF PUBLIC WORKS
CIVIL ENGINEERING
701 W. MARKHAM
LITTLE ROCK, ARKANSAS 72201



SEAL

DRAWN BY

CKS

DESIGNED

JJG

CHECKED

JJG

DATE

07/26/2019

SCALE

1"=250'

PROJECT NO.

04-17-DR-171

SHEET NO.

C1

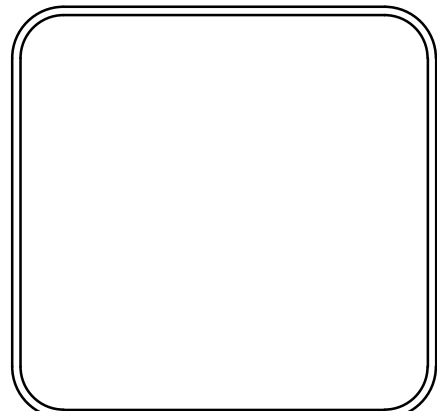
| Longlea Drive Drainage | | | |
|--|---|------|----------|
| Conceptual Design (60%) | | | |
| July 26, 2019 | | | |
| ITEM # | ITEM DESCRIPTION | UNIT | QUANTITY |
| Longlea Drive Culvert Replacement | | | |
| 2.01 | Site Preparation, Including Mobilization | LS | 1 |
| 2.02 | Clearing and Grubbing Trees | LS | 1 |
| 2.03 | Concrete Wall Removal | SF | 600 |
| 3.01 | Unclassified Excavation | CY | 60 |
| 3.06 | Borrow Material | CY | 60 |
| 4.01 | Aggregate Base Course (Class 7) | TON | 75 |
| 5.01 | Tack Coat | GAL | 2.1 |
| 6.01 | ACHM Surface Course | TON | 30 |
| 8.03 | Concrete Curb and Gutter (Class 3) | LF | 40 |
| 8.40 | Curb and Gutter Repair | LF | 300 |
| 9.03 | Concrete Flume | SF | 300 |
| 11.01 | Reinforced Concrete Pre-Cast Box Culvert (10'x5') | LF | 54 |
| 11.10 | Reinforced Concrete | CY | 30 |
| 16.01 | Maintenance of Traffic | LS | 1 |
| 17.01 | Pavement Repairs | SY | 390 |
| 19.01 | Final Cleanup | LS | 1 |
| 26.10 | Trench and Excavation Safety | LS | 1 |
| 28.00 | Guard Rail | LF | 60 |
| 28.01 | Guard Rail Anchor Posts | EA | 6 |

| EXISTING | | PROPOSED |
|------------------------------|----------|--|
| IRON ROD | ○ IR | PROPOSED CONTOUR |
| PK NAIL | ○ PK | PROPOSED SPOT ELEVATION |
| R.R. SPIKE | ○ RR(Sp) | PROPOSED SPOT CURB ELEVATION |
| CONC. MONUMENT | □ CM | STORM SEWER – PIPE |
| WATER VALVE | ⊗ WV | STORM SEWER – MITERED END SECTION |
| WATER METER | ⊞ WM | STORM SEWER – GRATE INLET |
| FIRE HYDRANT | ⊕ FH | STORM SEWER – JUNCTION BOX |
| GAS METER | ⊞ GM | STORM SEWER – FLARED END SECTION |
| GAS VALVE | ⊗ GV | STORM SEWER – HEADWALL |
| CLEAN-OUT | ○ CO | STORM SEWER – SINGLE WING |
| GUARD POST (BOLLARD) | • GP | STORM SEWER – DOUBLE WING |
| SIGN POST | ⊕ | STORM SEWER – AREA INLET |
| BENCHMARK | ⊕ | GRADE BREAK LINE |
| STORM SEWER MANHOLE | ⊕ | HIGH POINT |
| SANITARY SEWER MANHOLE | ⊕ | LOW POINT |
| TELEPHONE MANHOLE | ⊕ | CUT LINE |
| ELECTRIC MANHOLE | ⊕ | FILL LINE |
| TELEPHONE BOX | ⊕ | SANITARY SEWER PIPE |
| ELECTRIC BOX | ⊕ | SANITARY SEWER MANHOLE |
| CABLE BOX | ⊕ | PROPOSED CURB |
| UTILITY POLE | ⊕ | PROPOSED CONCRETE |
| GUY WIRE | ⊕ | CONSTRUCTION – ENTRANCE/EXIT |
| LIGHT POLE | ⊕ | CHECK DAM |
| POST OR POLE (TYPE AS NOTED) | ⊕ | DIVERSION BERM |
| MAILBOX | ⊕ | DOWNDRAIN STRUCTURE – TEMPORARY |
| DECIDUOUS TREE | ⊕ | ROCK DAM |
| EVERGREEN/CONIFEROUS TREE | ⊕ | SEDIMENT BARRIER – SILT FENCE |
| BUSH | ⊕ | SEDIMENT BARRIER – GRAVEL RING |
| PROPERTY LINE | ⊕ | SEDIMENT BARRIER – BLOCK & GRAVEL |
| SETBACK LINE | ⊕ | SEDIMENT BARRIER – BLOCK |
| EASEMENT LINE | ⊕ | TEMPORARY SEDIMENT BASIN |
| CURB | ⊕ | SILT FENCE – TYPE A |
| FENCE | ⊕ | SILT FENCE – TYPE B |
| OVERHEAD ELECTRIC | ⊕ | SILT FENCE – TYPE C |
| OVERHEAD TELEPHONE | ⊕ | STORM DRAIN OUTLET PROTECTION |
| OVERHEAD CABLE | ⊕ | SURFACE ROUGHENING |
| UNDERGROUND TELEPHONE | ⊕ | DISTURBED AREA STABILIZATION – TEMPORARY STABILIZATION |
| UNDERGROUND ELECTRIC | ⊕ | DISTURBED AREA STABILIZATION – TEMPORARY GRASSING |
| UNDERGROUND CABLE | ⊕ | DISTURBED AREA STABILIZATION – PERMANENT GRASSING |
| WATER LINE | ⊕ | MATting/BLANKETS |
| SEWER LINE | ⊕ | |
| GAS LINE | ⊕ | |
| STORM SEWER/CULVERT | ⊕ | |
| EDGE OF WOODS | ⊕ | |
| CONTOUR LINE | ⊕ | |

| REVISIONS | DATE |
|-----------|------|
| | |
| | |

CITY OF LITTLE ROCK, ARKANSAS
LONGLEA DRIVE
INDEX SHEET

DEPARTMENT OF PUBLIC WORKS
CIVIL ENGINEERING
701 W. MARKHAM
LITTLE ROCK, ARKANSAS 72201



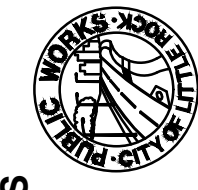

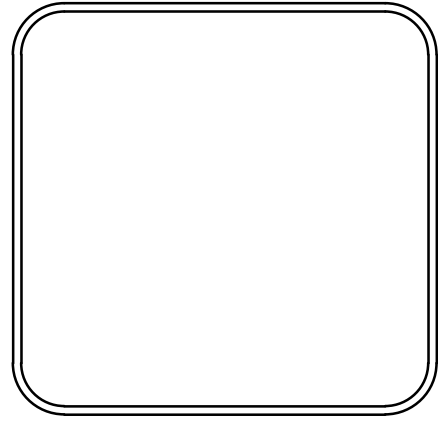
| |
|--|
| DRAWN BY CKS |
| DESIGNED JJG |
| CHECKED JJG |
| DATE 07/26/2019 |
| SCALE |
| PROJECT NO. CLR 04-17-DR-171 |
| SHEET NO. C2 |



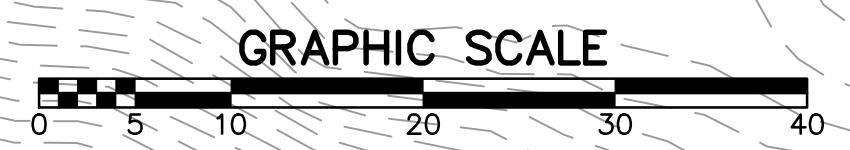
| REVISIONS | DATE |
|-----------|------|
| | |

CITY OF LITTLE ROCK, ARKANSAS
 LONGLEA DRIVE
 EXISTING CONDITIONS

DEPARTMENT OF PUBLIC WORKS
 CIVIL ENGINEERING
 701 W. MARKHAM
 LITTLE ROCK, ARKANSAS 72201

| |
|--|
| DRAWN BY CKS |
| DESIGNED CKS |
| CHECKED JYG |
| DATE 07/26/19 |
| SCALE 1"=10' |
| PROJECT NO. CLR 04-17-DR-171 |
| SHEET NO. C3 |

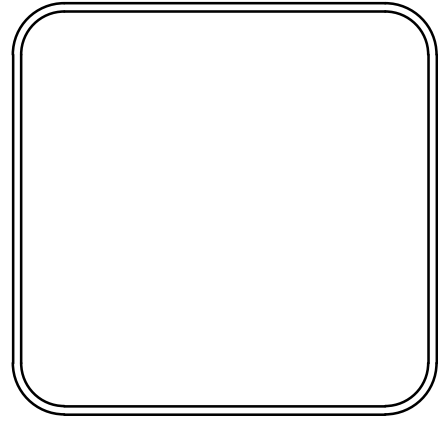


60%
 SUBMITTAL

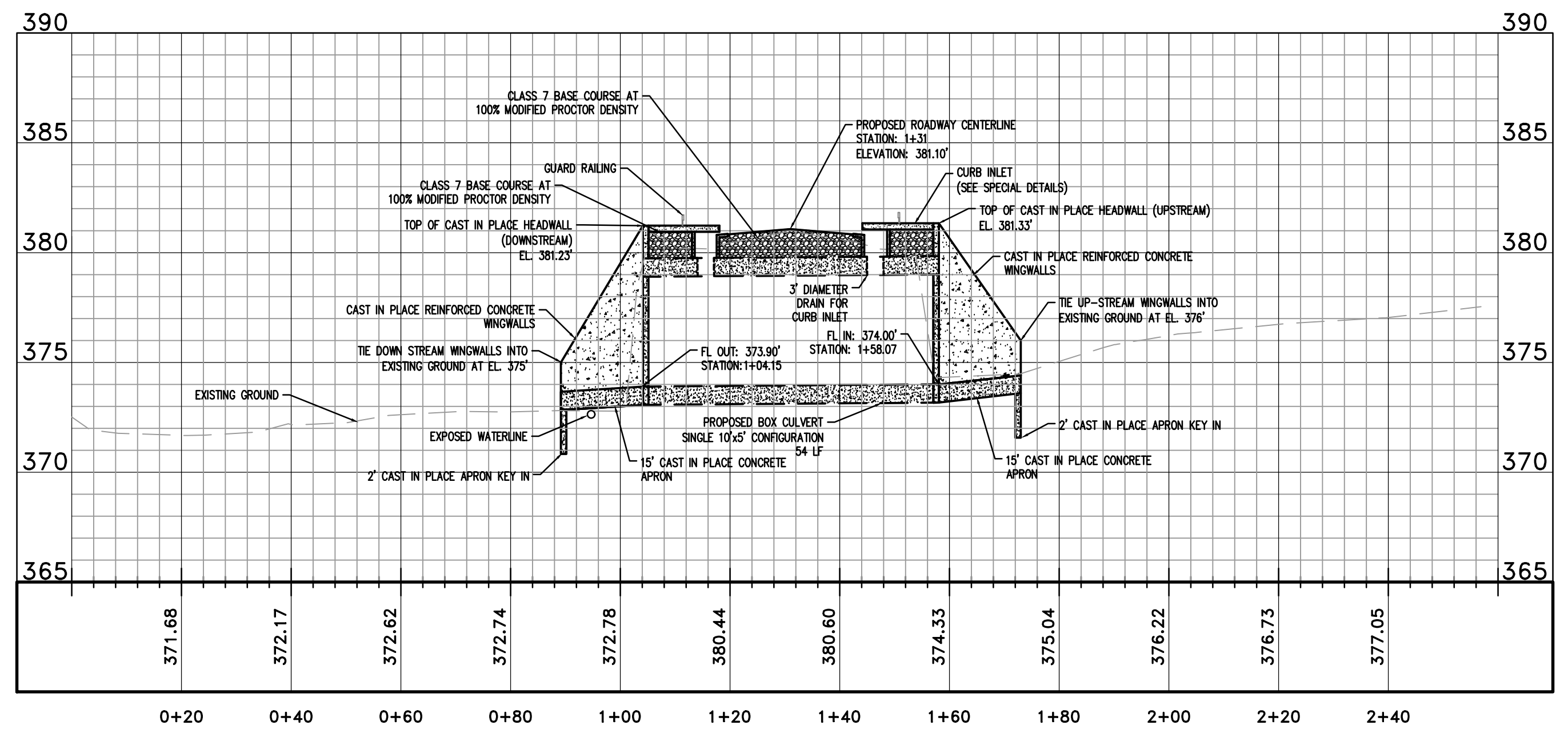
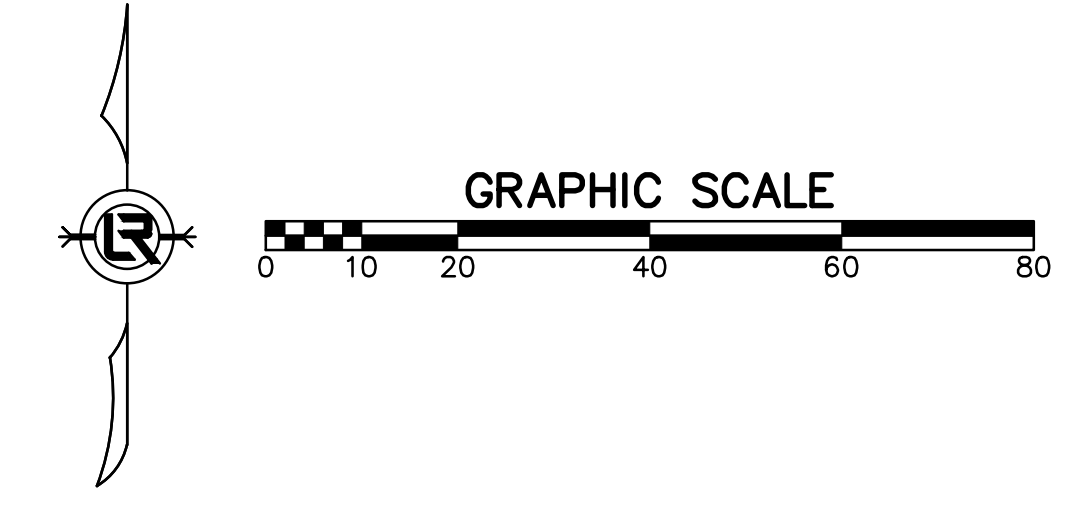
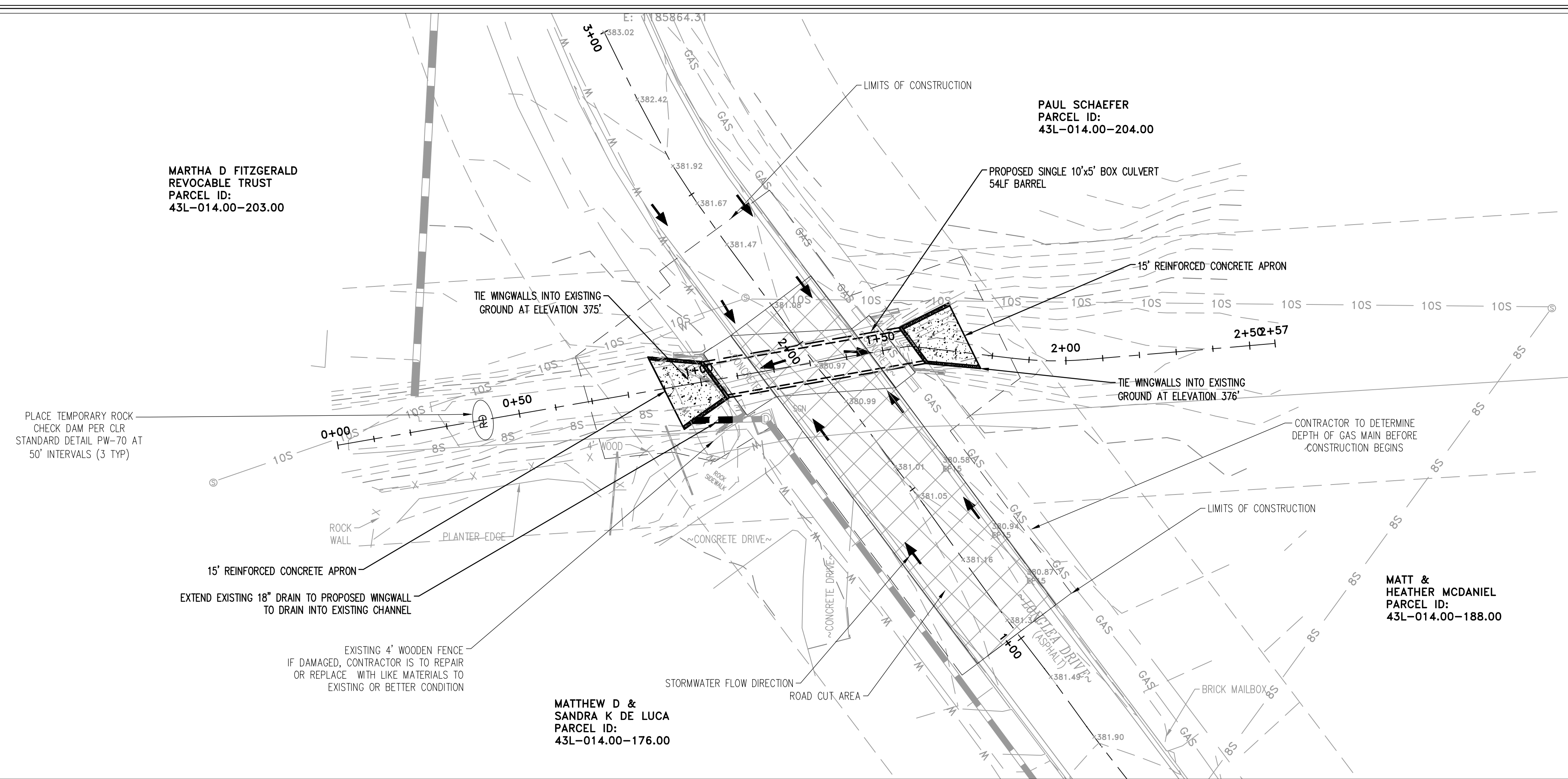
| REVISIONS | DATE |
|-----------|------|
| | |
| | |

CITY OF LITTLE ROCK, ARKANSAS
LONGLEA DRIVE
PLAN AND PROFILE

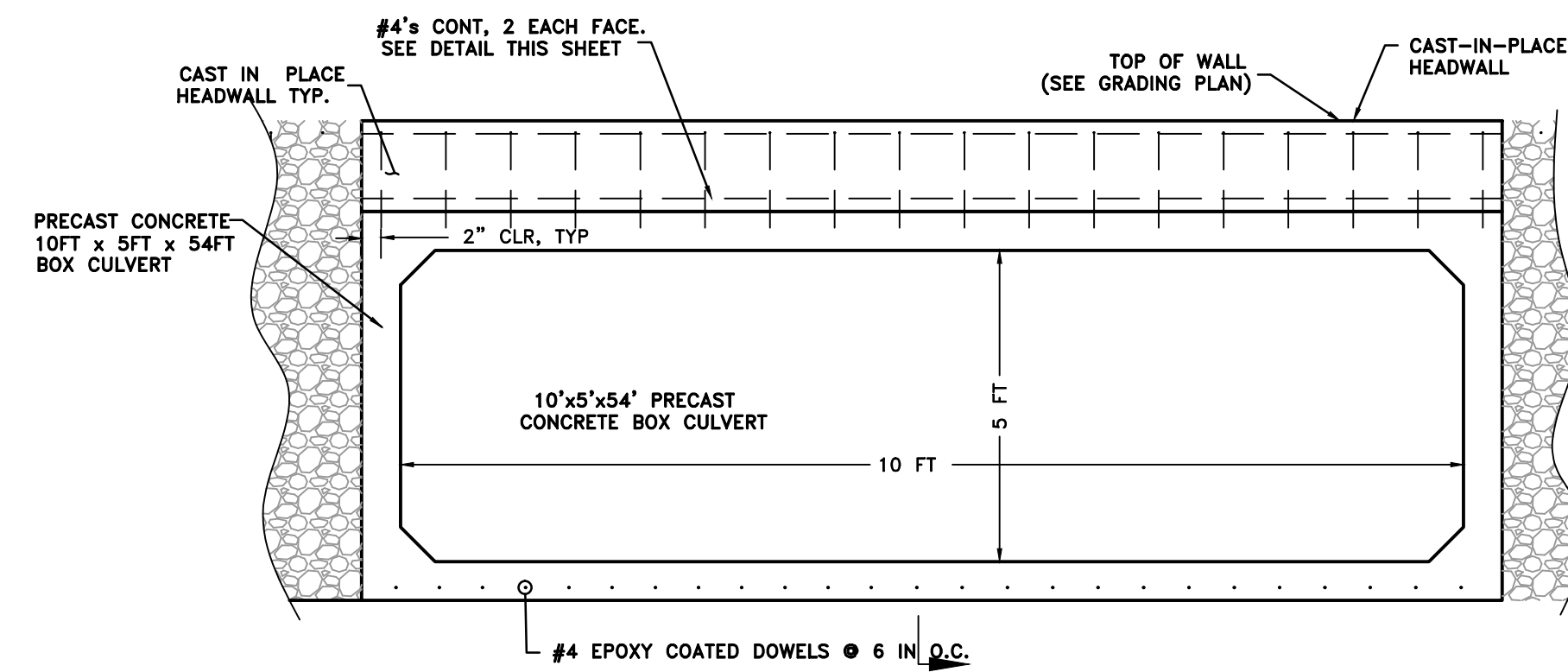
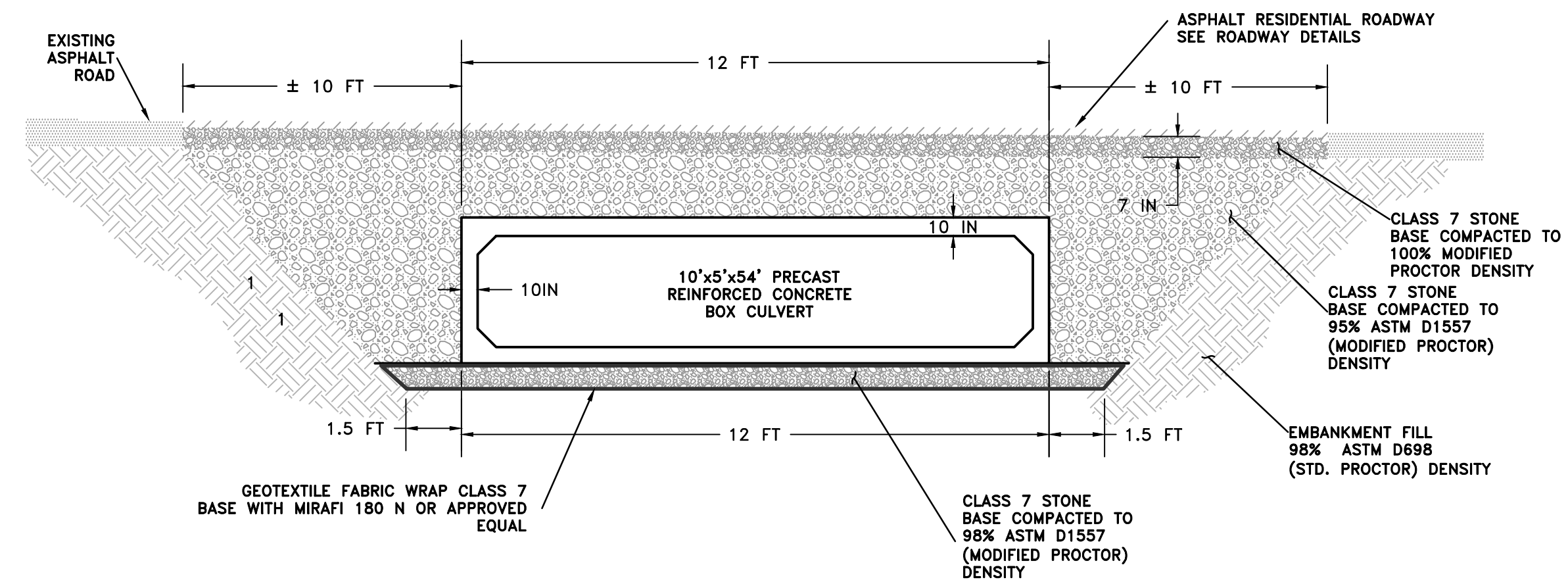
DEPARTMENT OF PUBLIC WORKS
CIVIL ENGINEERING
701 W. MARKHAM
LITTLE ROCK, ARKANSAS 72201



DRAWN BY
CKS
DESIGNED
JGG
CHECKED
JGG
DATE
07/26/19
SCALE
1"=20'
PROJECT NO.
CLR 04-17-DR-171
SHEET NO.
C4



60%
SUBMITTAL



GENERAL NOTES:

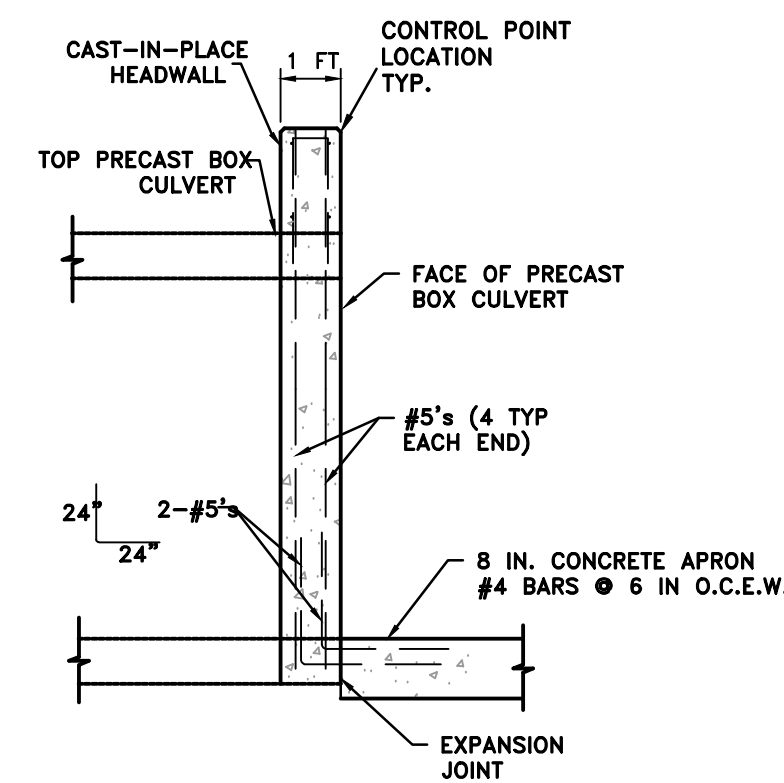
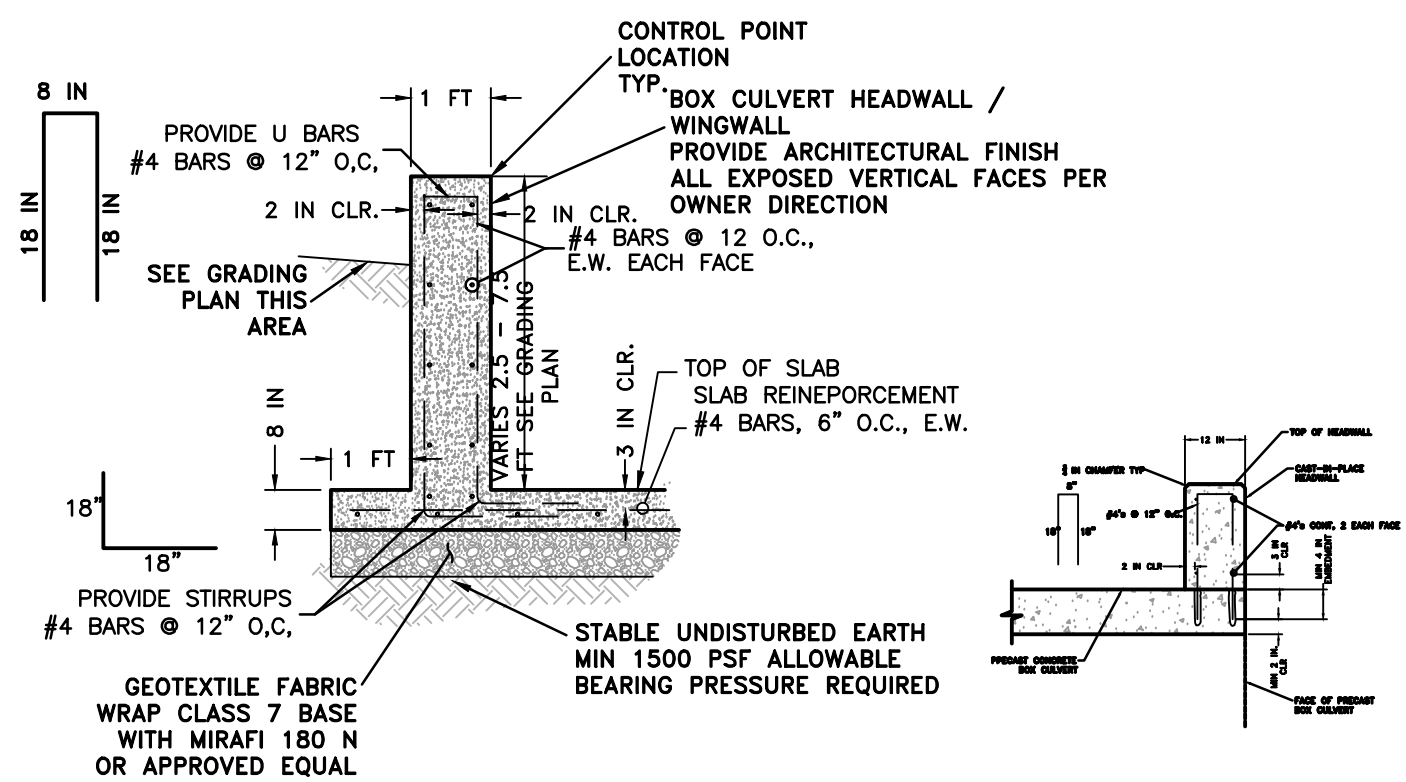
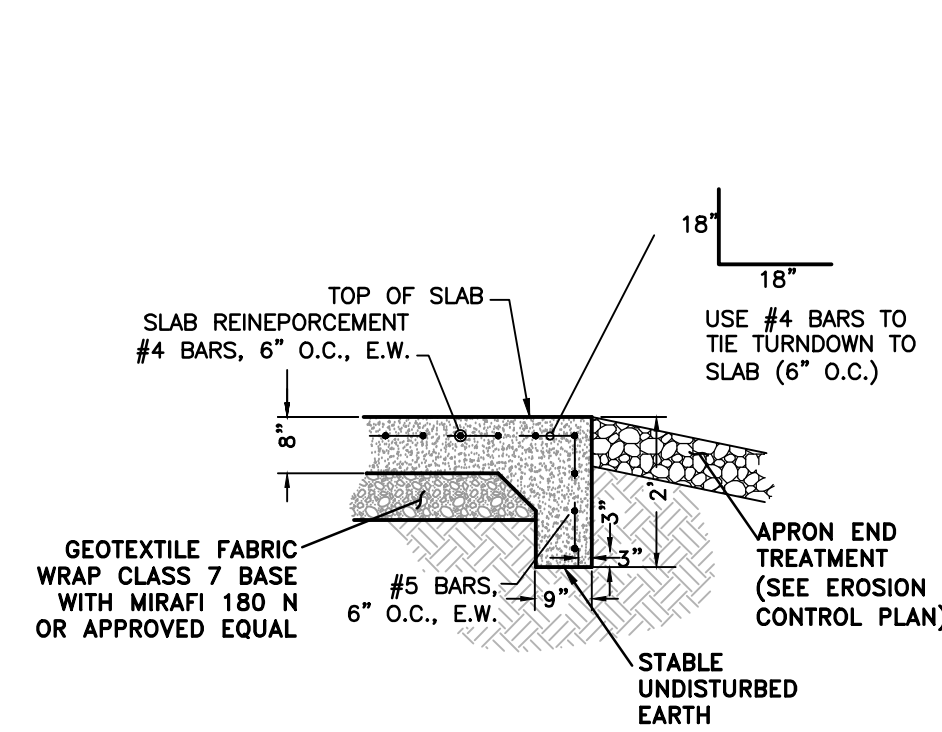
1. WINGS, CURTAIN WALLS AND APRONS SHALL BE TIED TO THE PRECAST CULVERT SECTION BY #4 BARS CAST INTO PRECAST BOX CULVERT END SECTIONS AS SHOWN OR BY DOWELING AND GROUTING.
2. ALL EXPOSED CORNERS SHALL HAVE 3/4" CHAMFERS.
3. SEE GENERAL NOTES AND TECHNICAL SPECIFICATIONS FOR CONCRETE AND REINFORCING REQUIREMENTS.
4. PROVIDE ARCHITECTURAL FINISH ALL EXPOSED VERTICAL FACES OF HEADWALLS AND WINGWALLS PER OWNER DIRECTION.

LEAN GROUT REQUIREMENTS:

1. PORTLAND CEMENT SHALL BE TYPE 1 AND SHALL MEET THE REQUIREMENTS OF AASHTO M 85.
2. SAND SHALL MEET THE REQUIREMENTS OF ASTM C 33 FINE AGGREGATE.
3. THE SAND CEMENT MIXTURE SHALL CONSIST OF NOT LESS THAN 1.5 SACKS OF PORTLAND CEMENT PER TON OF MATERIAL MIXTURE.
4. THE MIXTURE SHALL CONTAIN SUFFICIENT WATER TO HYDRATE THE CEMENT.
5. THE SAND CEMENT MIXTURE SHALL BE PLACED IN MAXIMUM 8 INCH THICK LIFTS, LOOSE MEASURE, AND RODDED AND TAMPED AROUND BOX TO THOROUGHLY FILL VOIDS.

NOTE:

1. PRECAST REINFORCED CONCRETE BOX CULVERTS JOINTS SHALL BE INSTALL WITH PREFORMED FLEXIBLE PLASTIC JOINT MATERIAL (RAM-NEK OR APPROVED EQUAL). INSTALL PREFORMED FLEXIBLE JOINT SEALANTS IN ACCORDANCE WITH THE MANUFACTURER'S RECOMMENDATIONS. PLACE THE JOINT SEALER SO THAT NO DIRT OR OTHER DELETERIOUS MATERIALS COME IN CONTACT WITH THE JOINT SEALING MATERIAL. PULL OR PUSH HOME THE CULVERT WITH ENOUGH FORCE TO PROPERLY SEAL THE JOINT. REMOVE ANY JOINT MATERIAL PUSHED OUT INTO THE INTERIOR OF THE PIPE THAT WOULD TEND TO OBSTRUCT THE FLOW. WHEN THE ATMOSPHERIC TEMPERATURE IS BELOW 60°F, STORE PREFORMED FLEXIBLE JOINT SEALANTS IN AN AREA WARMED TO ABOVE 70°F OR ARTIFICIALLY WARM TO THIS TEMPERATURE IN AN APPROVED MANNER. APPLY FLEXIBLE JOINT SEALANTS TO PIPE JOINTS IMMEDIATELY BEFORE PLACING PIPE IN TRENCH, AND THEN CONNECT PIPE TO PREVIOUSLY LAID PIPE. BACKFILL AFTER THE JOINT HAS BEEN INSPECTED AND APPROVED.



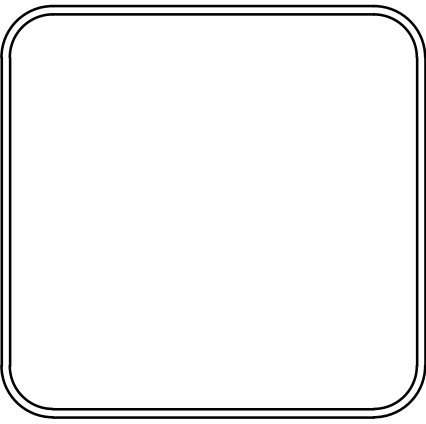
PRECAST CONCRETE BOX AND HEADWALL DETAILS

60%
 SUBMITTAL

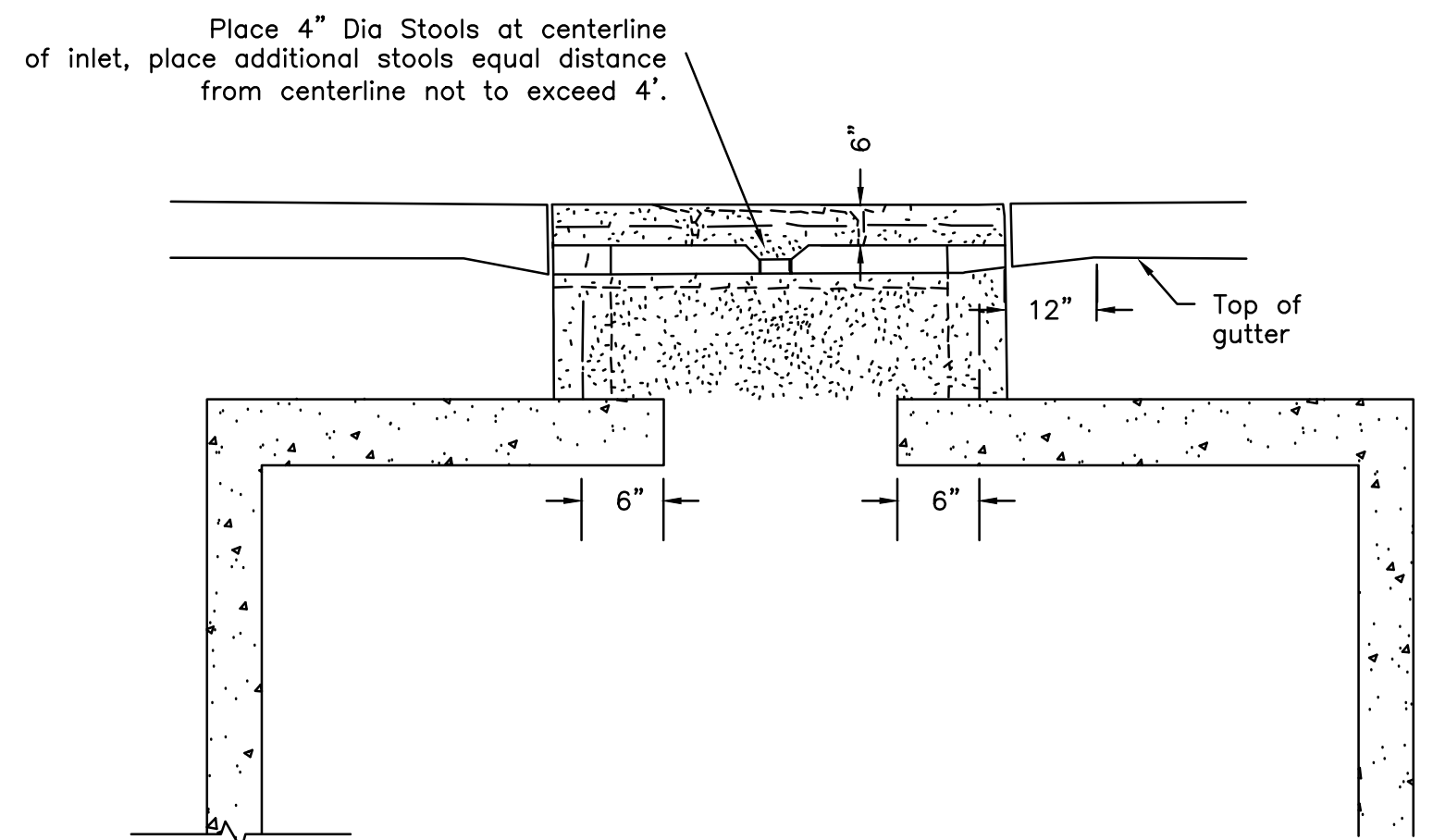
| REVISIONS | DATE |
|-----------|------|
| | |
| | |

CITY OF LITTLE ROCK, ARKANSAS
 LONGLEA DRIVE
 SPECIAL DETAILS 2 OF 2

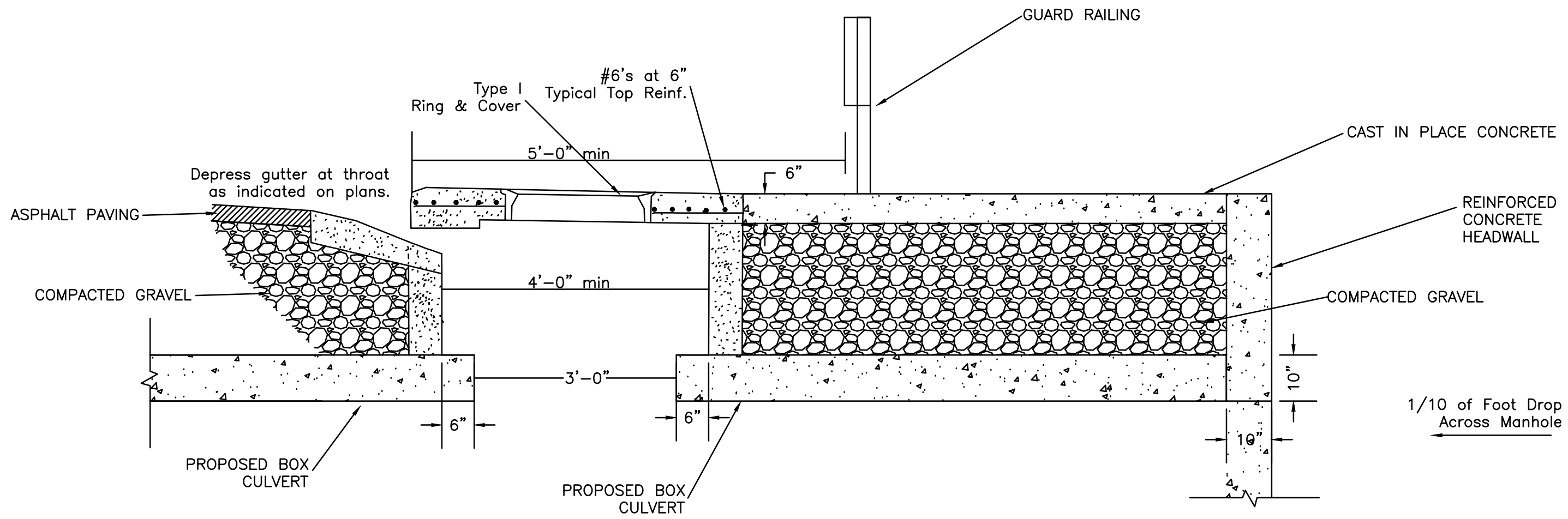
DEPARTMENT OF PUBLIC WORKS
 CIVIL ENGINEERING
 701 W. MARKHAM
 LITTLE ROCK, ARKANSAS 72201



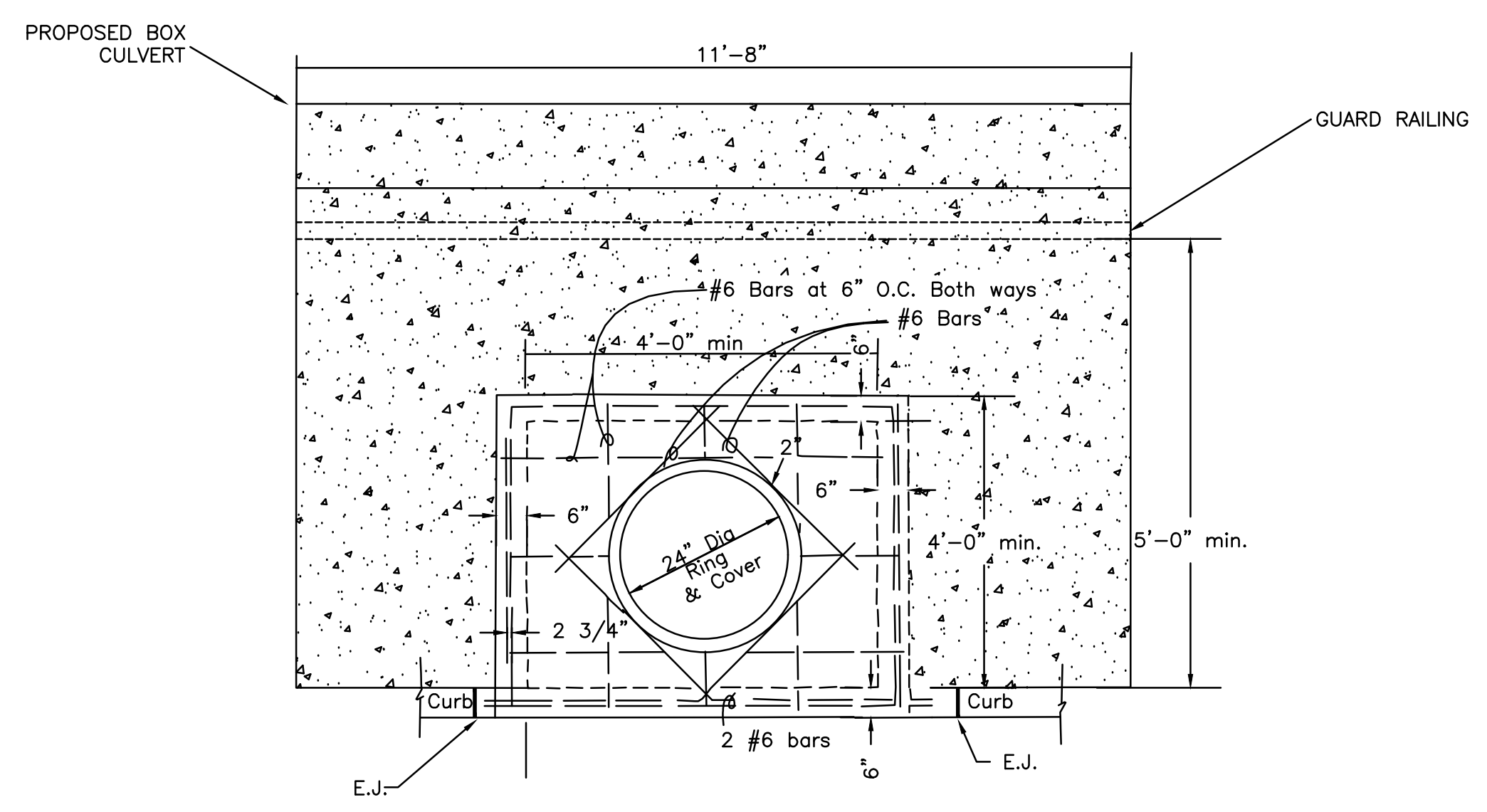
| |
|---------------------------------|
| DRAWN BY CKS |
| DESIGNED JJG |
| CHECKED JJG |
| DATE 07/26/19 |
| SCALE N.T.S. |
| PROJECT NO. CLR 04-17-DR-171 |
| SHEET NO. C6 |



FRONT SECTION VIEW



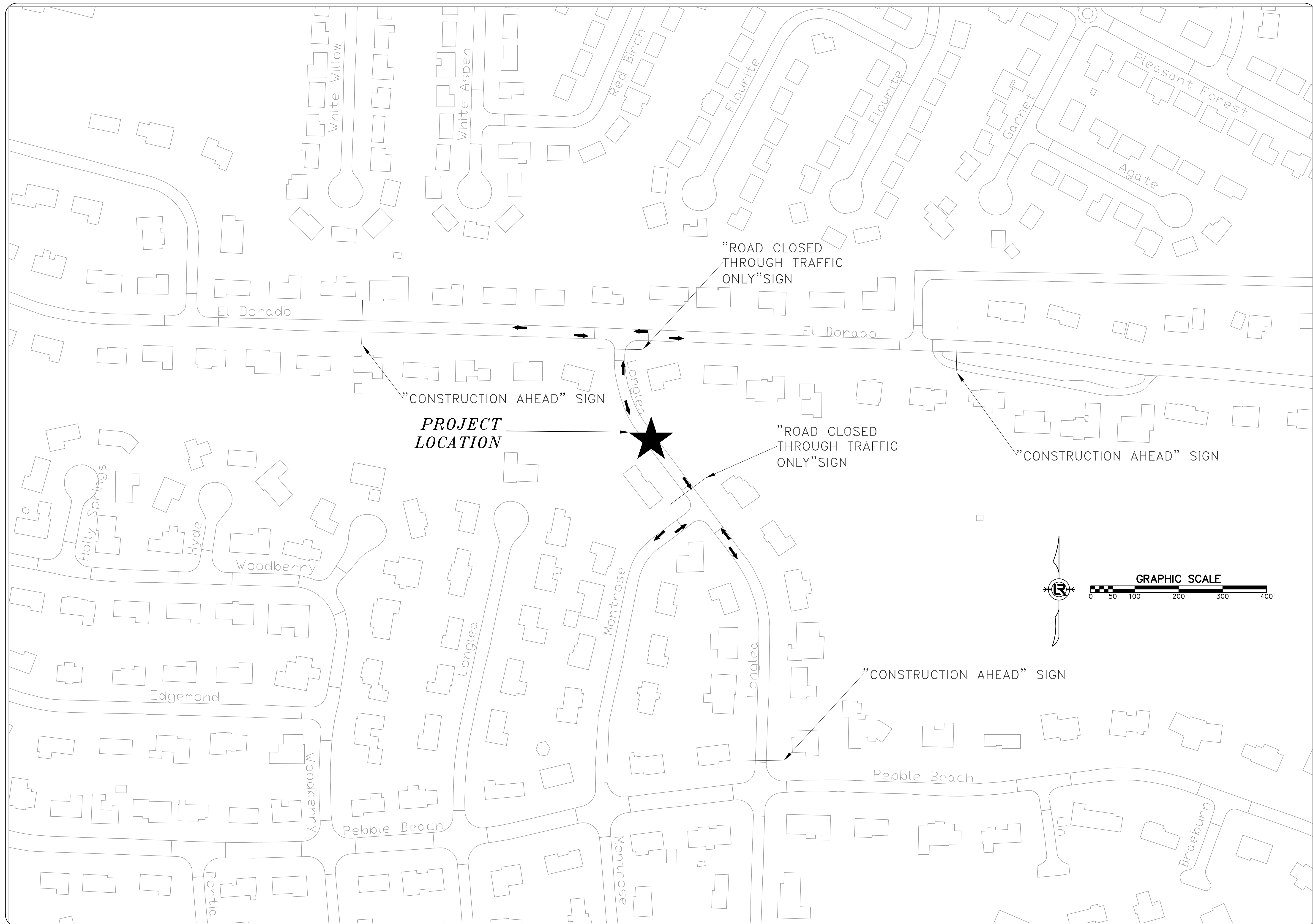
SIDE SECTION VIEW



PLAN VIEW

CURB INLET AND BOX DETAILS

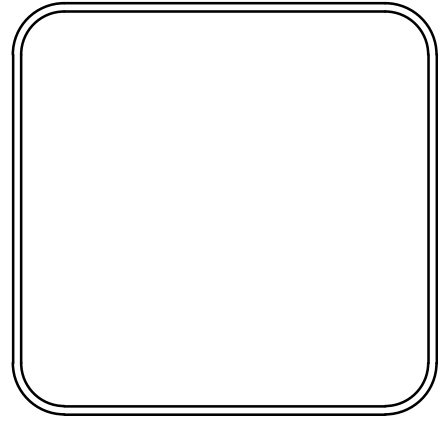
60%
 SUBMITTAL



| REVISIONS | DATE |
|-----------|------|
| | |
| | |

CITY OF LITTLE ROCK, ARKANSAS
 LONGLEA DRIVE
 TRAFFIC CONTROL

DEPARTMENT OF PUBLIC WORKS
 CIVIL ENGINEERING
 701 W. MARKHAM
 LITTLE ROCK, ARKANSAS 72201



| |
|------------------------------------|
| DRAWN BY CKS |
| DESIGNED JJG |
| CHECKED JJG |
| DATE 07/26/2019 |
| SCALE 1"=100' |
| PROJECT NO. 04-17-DR-171 |
| SHEET NO. C7 |