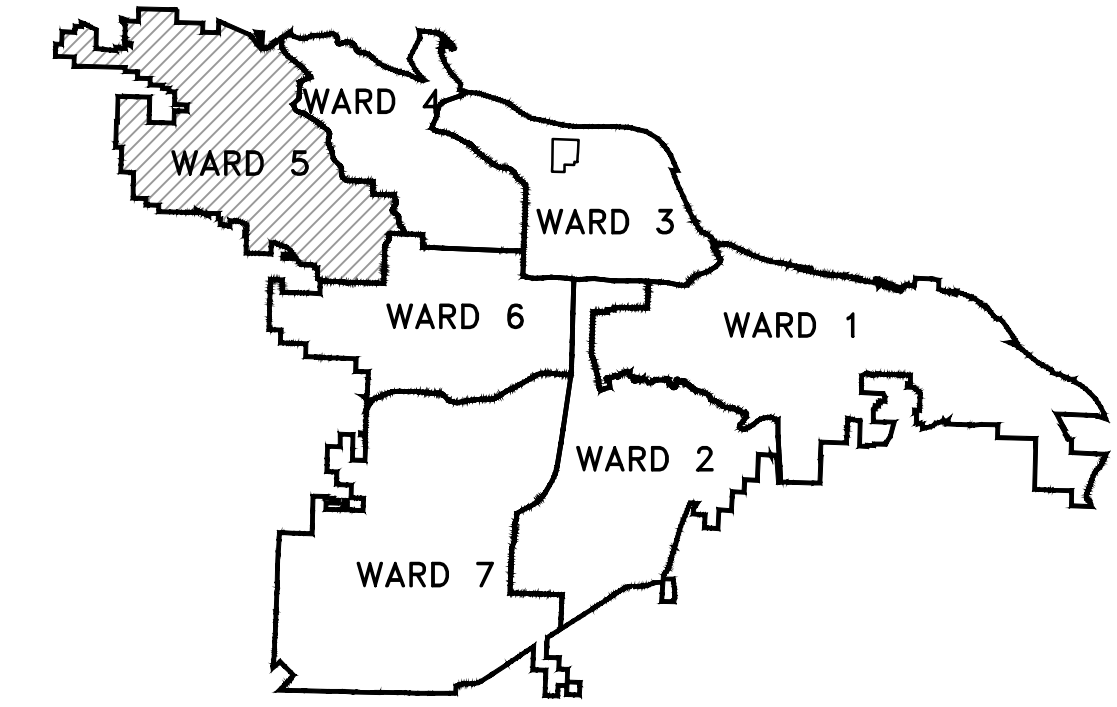


JOB #05-16-ST-224

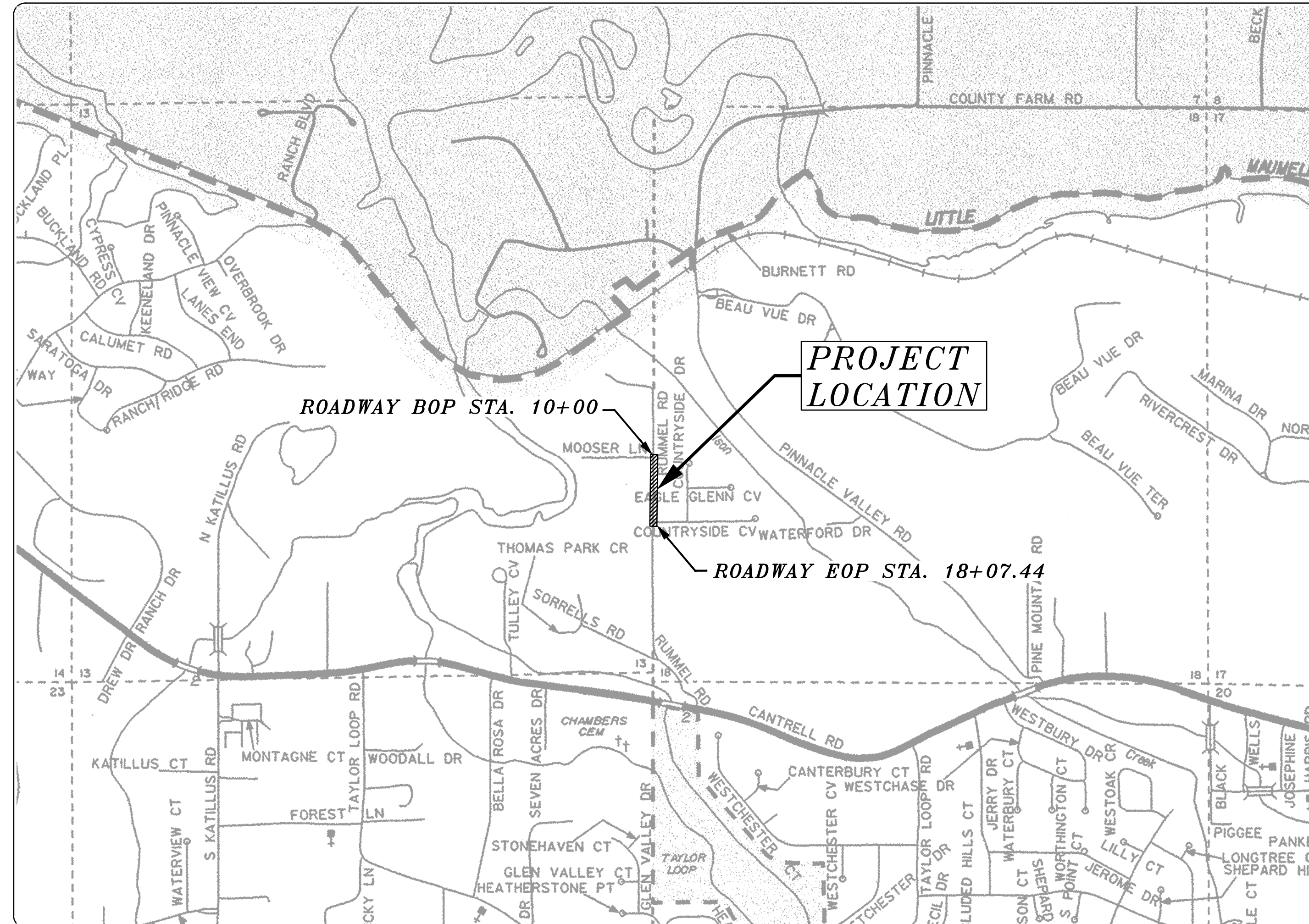
RUMMEL ROAD IMPROVEMENTS (MOOSER LANE TO COUNTRYSIDE CV.)

LITTLE ROCK, ARKANSAS



PROJECT LOCATION - WARD 5

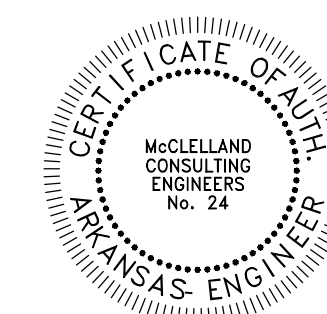
SHEET NO.	TITLE
C1	COVER SHEET
C2	LEGEND AND QUANTITIES
C3	TYPICAL SECTION
C4	TYPICAL SECTION MOT
C5	TOPOGRAPHIC SURVEY
C6	EROSION CONTROL PLAN
C7	PLAN AND PROFILE
C8	PLAN AND PROFILE
C9	MAINTENANCE OF TRAFFIC STAGE 1
C10	MAINTENANCE OF TRAFFIC STAGE 2
C11	CROSS SECTIONS
C12	CROSS SECTIONS



DEPARTMENT OF PUBLIC WORKS
CIVIL ENGINEERING
701 WEST MARKHAM STREET
LITTLE ROCK, ARKANSAS 72201



Know what's below.
Call before you dig.



MCE McCLELLAND
CONSULTING
ENGINEERS, INC.
DESIGNED TO SERVE

7302 Kanis Rd.
Little Rock, AR 72204
PH# 501-371-0272

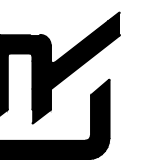
<http://www.mce.us.com>

REVISIONS DATE

CITY OF LITTLE ROCK, ARKANSAS
RUMMEL ROAD IMPROVEMENTS

COVER SHEET

DEPARTMENT OF PUBLIC WORKS
CIVIL ENGINEERING
701 W. MARKHAM



LITTLE ROCK, ARKANSAS 72201



ORIGINAL SIGNATURE ON FILE

DRAWN BY
JAM
DESIGNED
JJW
CHECKED
MK

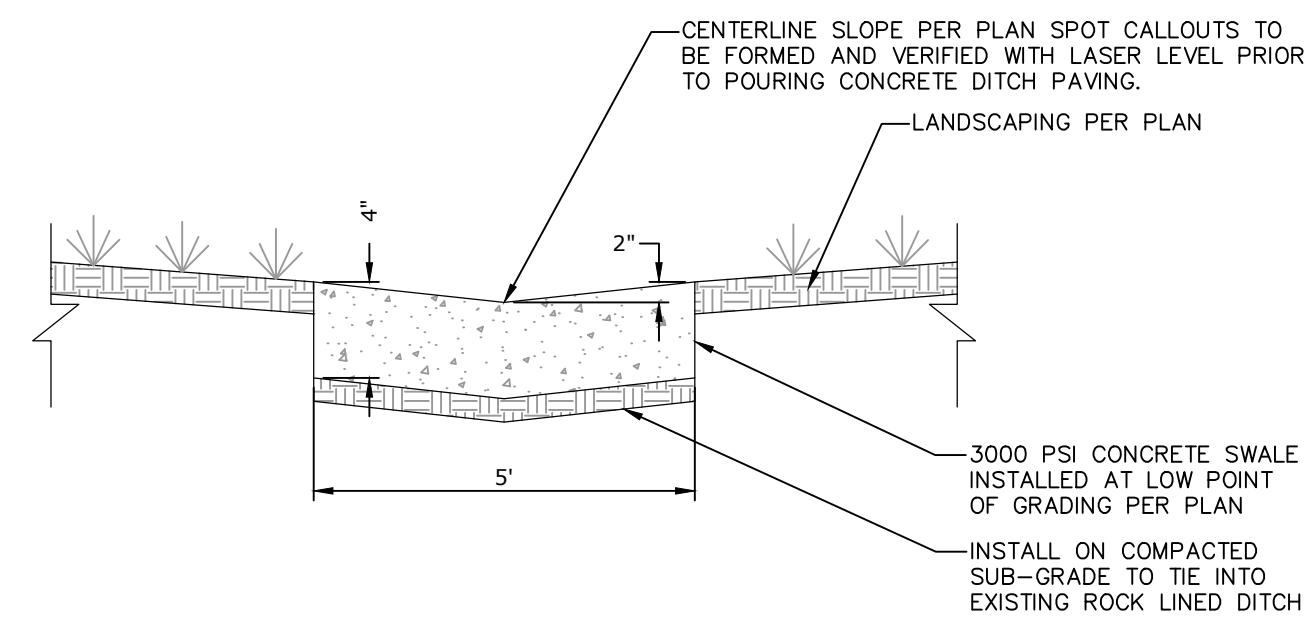
DATE
10/24/2019
SCALE
NTS

PROJECT NO.
05-16-ST-224

SHEET NO.
C1

QUANTITIES

Item No.	CLR Item No.	Description	Unit	Estimated Quantity
1	2.01	Site Preparation	LUMP SUM	1
2	3.01	Unclassified Excavation	CU.YD.	240
3	3.06	Borrow Material	CU.YD.	380
4	4.01	Aggregate Base Course (Class 7)	TON	255
5	5.01	Tack Coat	GAL	100
6	6.01	ACHM Surface Course	TON	165
7	6.02	ACHM Binder Course	TON	30
8	7.04	Concrete Driveway (6" Thick)	SQ. FT.	1,060
9	8.01	Concrete Curb and Gutter (Class 3)	LIN. FT.	610
10	10.01	Junction Box (4' I.D.)	EA	1
11	10.04	Curb Inlets (4' I.D.)	EA	2
12	10.07	Wing 3' Extension	EA	2
13	11.05	18" Reinforced Concrete Precast Headwall	EA	1
14	13.18C	18" Side Drain	LIN. FT.	835
15	13.63	Concrete Plug on Existing Storm Drain	EA	2
16	14.01	Solid Sodding, Bermuda (Includes Topsoil)	SQ. YD.	850
17	16.01	Maintenance of Traffic	LUMP SUM	1
18	19.01	Final Cleanup	LUMP SUM	1
19	22.01	Mailbox Relocation	EA	12
20	24.02	Check Dam (CD)	CU.YD.	17
21	24.06	Sediment Barrier, Silt Fence (SD1)	EA	2
22	26.01	Trench or Excavation Safety Systems	LUMP SUM	1
23	27.01	Cold Milling Asphalt Pavement	SQ. YD.	622
24	605	Concrete Ditch Paving	SQ.YD	8
25	606.18C	Flared End Section 18" RCP	EA	1



CONCRETE DITCH PAVING DETAIL N.T.S.

LEGEND

EXISTING	PROPOSED
○ IR IRON ROD	○ 25.00 PROPOSED CONTOUR
○ PK PK NAIL	○ 25.00 PROPOSED SPOT ELEVATION
○ RR(Sp) R.R. SPIKE	○ 25.50 PROPOSED SPOT CURB ELEVATION
□ CM CONC. MONUMENT	— SW STORM SEWER - PIPE
× WV WATER VALVE	— MW STORM SEWER - MITERED END SECTION
□ WM WATER METER	— GI STORM SEWER - GRATE INLET
▽ FH FIRE HYDRANT	— DJ STORM SEWER - JUNCTION BOX
□ GM GAS METER	— FL STORM SEWER - FLARED END SECTION
⊗ GV GAS VALVE	— HW STORM SEWER - HEADWALL
○ CO CLEAN-OUT	— SD STORM SEWER - SINGLE WING
• GP GUARD POST (BOLLARD)	— DD STORM SEWER - DOUBLE WING
— SIGN POST	— DI STORM SEWER - AREA INLET
— BENCHMARK	— HP GRADE BREAK LINE
○ S STORM SEWER MANHOLE	— LP HIGH POINT
○ T SANITARY SEWER MANHOLE	— C LOW POINT
○ TELEPHONE MANHOLE	— F CUT LINE
○ E ELECTRIC MANHOLE	— SS FILL LINE
□ TELEPHONE BOX	— SS SANITARY SEWER PIPE
□ ELECTRIC BOX	○ S SANITARY SEWER MANHOLE
□ CABLE BOX	— PROPOSED CURB
□ UTILITY POLE	— PROPOSED CONCRETE
□ GUY WIRE	— PROPOSED ASPHALT
□ LIGHT POLE	— PROPOSED RIP-RAP
□ POST OR POLE (TYPE AS NOTED)	— CO CONSTRUCTION - ENTRANCE/EXIT
□ MAILBOX	— CD CHECK DAM
□ DECIDUOUS TREE	— DI DIVERSION BERM
□ EVERGREEN/CONIFEROUS TREE	— DN DOWNDRAIN STRUCTURE - TEMPORARY
□ BUSH	— RD ROCK DAM
— — — — — PROPERTY LINE	— SD1 SEDIMENT BARRIER - SILT FENCE
— — — — — SETBACK LINE	— SD2 SEDIMENT BARRIER - GRAVEL RING
— — — — — EASEMENT LINE	— SD3 SEDIMENT BARRIER - BLOCK & GRAVEL
— — — — — CURB	— SD4 SEDIMENT BARRIER - BLOCK
— X — X — X — FENCE	— SB1 TEMPORARY SEDIMENT BASIN
— OE — OE — OE — OVERHEAD ELECTRIC	— SFA SILT FENCE - TYPE A
— OT — OT — OT — OVERHEAD TELEPHONE	— SFB SILT FENCE - TYPE B
— OC — OC — OC — OVERHEAD CABLE	— SFC SILT FENCE - TYPE C
— UGT — UNDERGROUND TELEPHONE	— ST STORM DRAIN OUTLET PROTECTION
— UGE — UNDERGROUND ELECTRIC	— SU SURFACE ROUGHENING
— UGC — UNDERGROUND CABLE	— TS1 DISTURBED AREA STABILIZATION - TEMPORARY STABILIZATION
— 8"W — WATER LINE	— TS2 DISTURBED AREA STABILIZATION - TEMPORARY GRASSING
— 8"SS — SEWER LINE	— TS3 DISTURBED AREA STABILIZATION - PERMANENT GRASSING
— 4"G — GAS LINE	— Mb MATTING/BLANKETS
— — — — — 24" CMP/RCP/DIP	
— — — — — EDGE OF WOODS	
— — — — — CONTOUR LINE	

REVISIONS	DATE

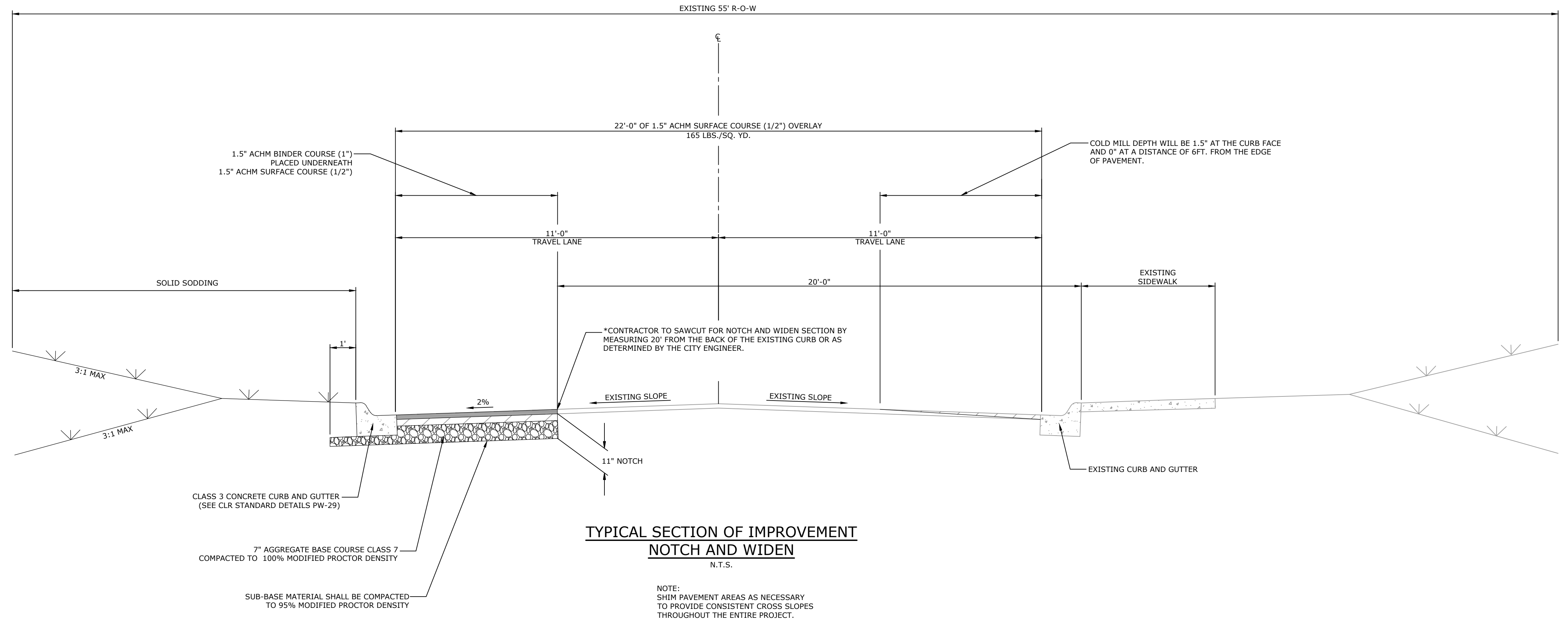
CITY OF LITTLE ROCK, ARKANSAS
RUMMEL ROAD IMPROVEMENTS
LEGEND AND QUANTITIES

DEPARTMENT OF PUBLIC WORKS
CIVIL ENGINEERING
701 W. MARKHAM
LITTLE ROCK, ARKANSAS 72201



DRAWN BY
JAM
DESIGNED
JJW
CHECKED
MK
DATE
10/24/2019
SCALE
NTS
PROJECT NO.
05-16-ST-224
SHEET NO.
C2

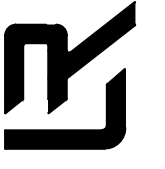
W:\2018\18-5821_City of Little Rock, Rummel Rd. Reconstruction\Design Drawings\18-5821-TYP SECTIONS.dwg 10/25/19 at 8:41am



REVISIONS	DATE

CITY OF LITTLE ROCK, ARKANSAS
RUMMEL ROAD IMPROVEMENTS
TYPICAL SECTION

DEPARTMENT OF PUBLIC WORKS
CIVIL ENGINEERING
701 W. MARKHAM
LITTLE ROCK, ARKANSAS 72201



DRAWN BY JAM
DESIGNED JJW
CHECKED MK
DATE 10/24/2019
SCALE NTS
PROJECT NO. 05-16-ST-224
SHEET NO. C3

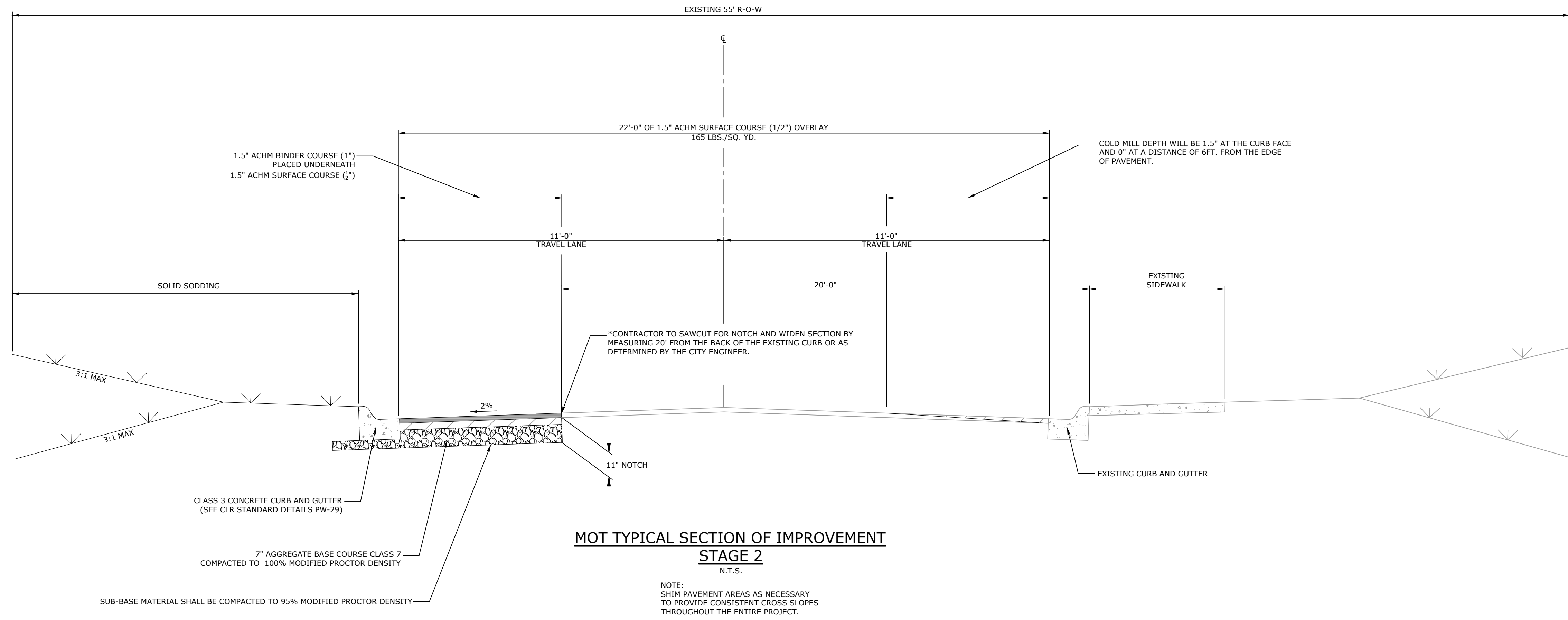
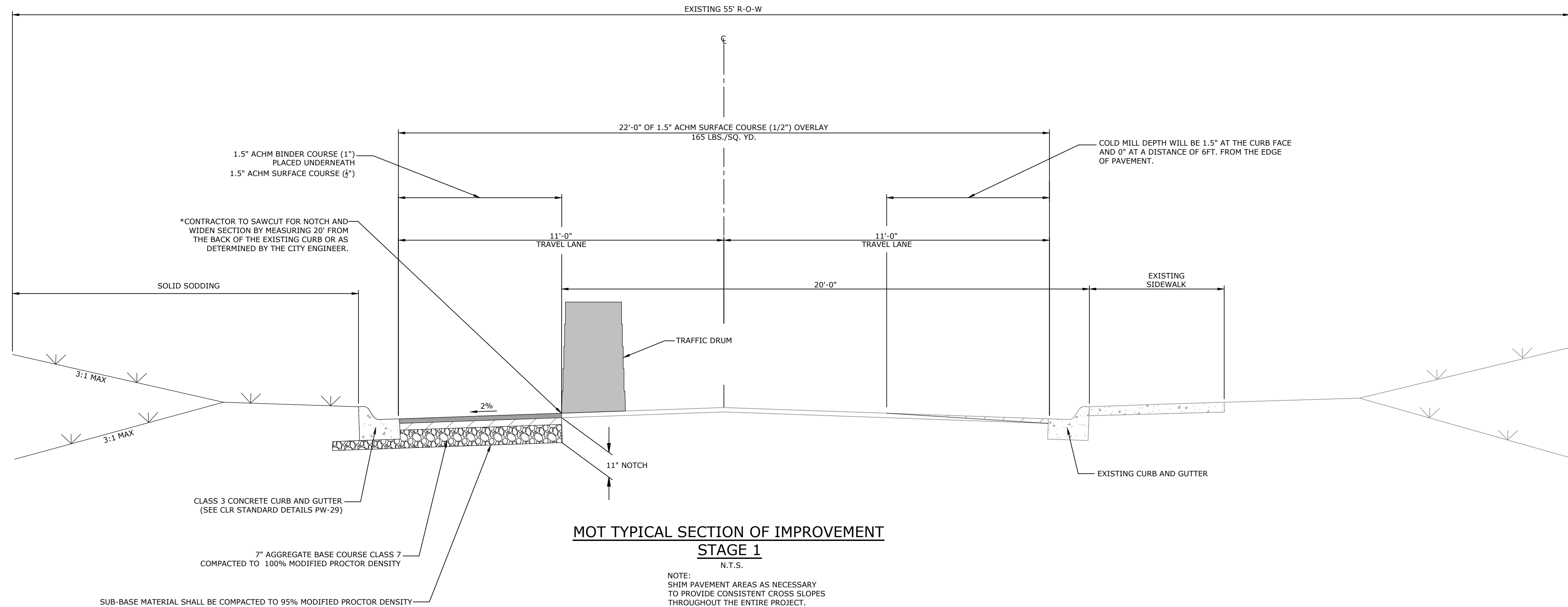
REVISIONS	DATE

CITY OF LITTLE ROCK, ARKANSAS
RUMMEL ROAD IMPROVEMENTS
TYPICAL SECTIONS MOT

DEPARTMENT OF PUBLIC WORKS
CIVIL ENGINEERING
701 W. MARKHAM
LITTLE ROCK, ARKANSAS 72201



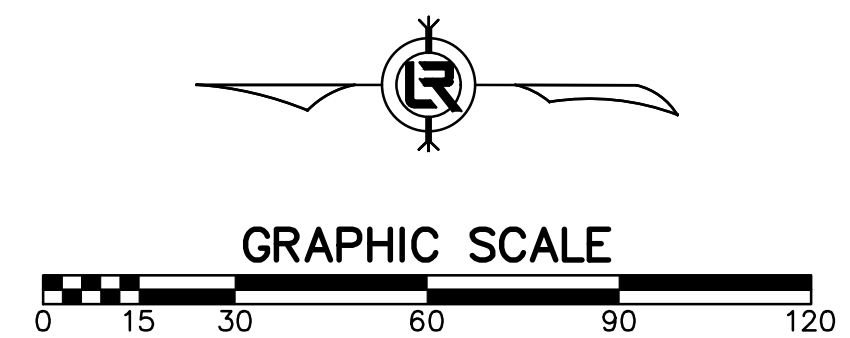
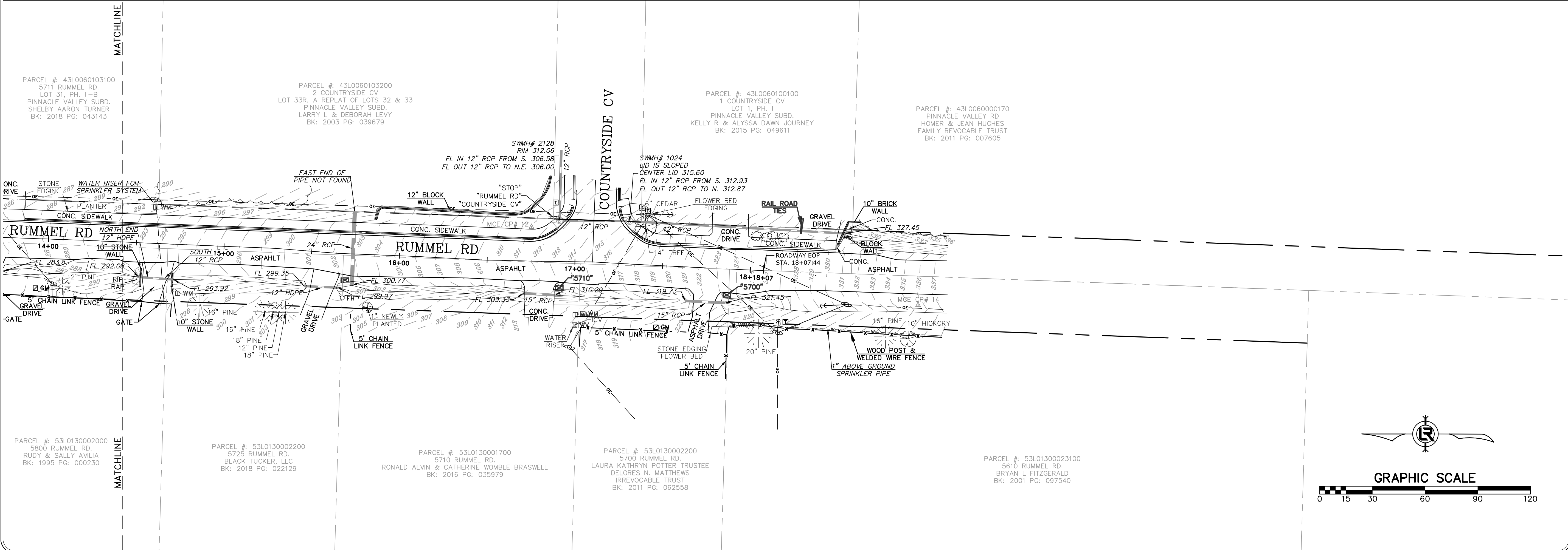
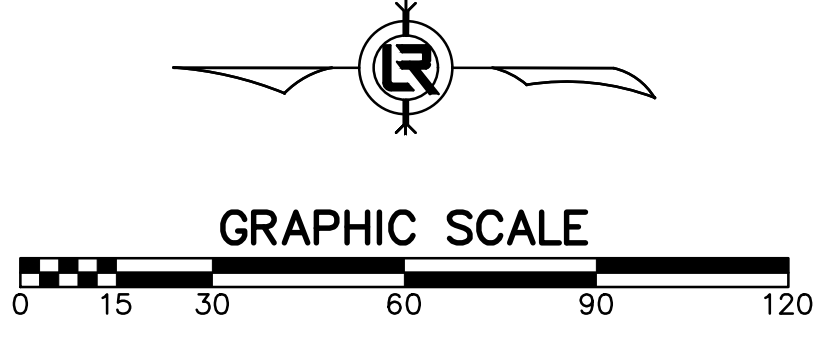
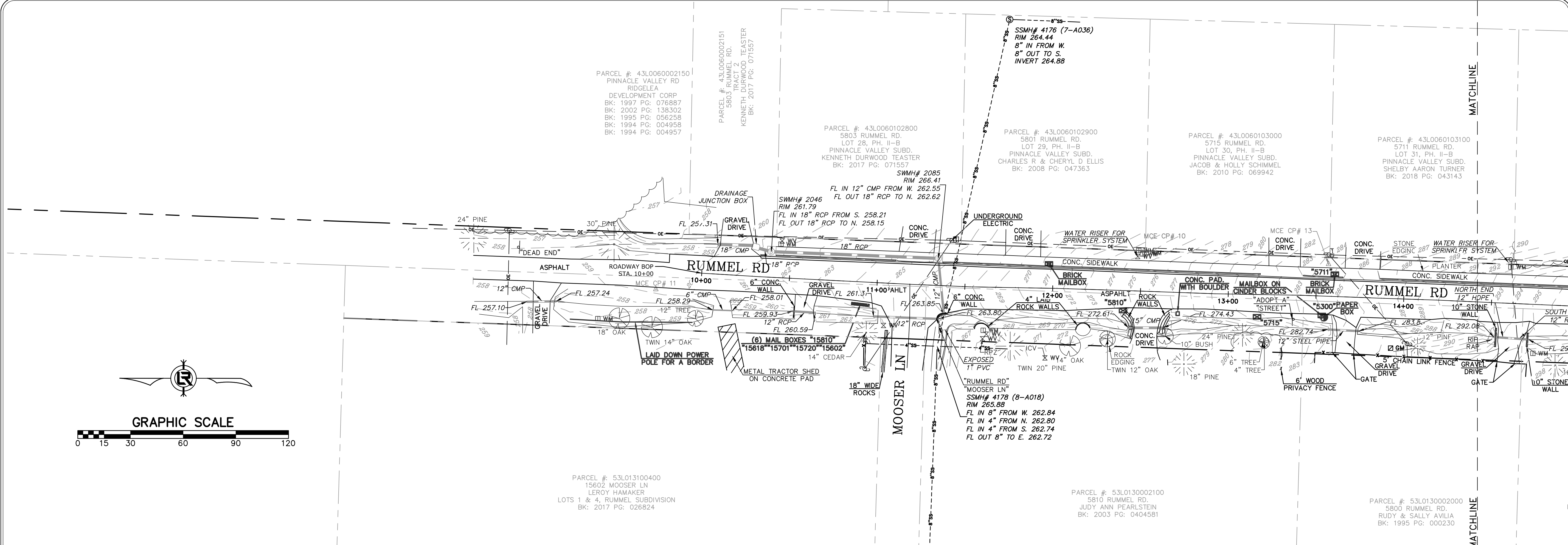
DRAWN BY
JAM
DESIGNED
JJW
CHECKED
MK
DATE
10/24/2019
SCALE
NTS
PROJECT NO.
05-16-ST-224
SHEET NO.
C4



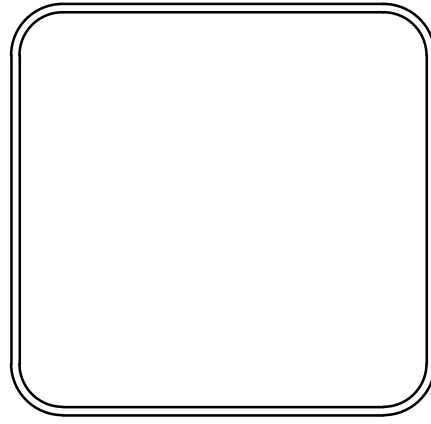
W:\2018\18-5821_City of Little Rock Rummel Rd. Reconstruction\Design Drawings\18-5821-TYP SECTIONS.dwg 10/25/19 at 8:41am

REVISIONS	DATE

CITY OF LITTLE ROCK, ARKANSAS
RUMMEL RD. RECONSTRUCTION
 TOPOGRAPHIC SURVEY

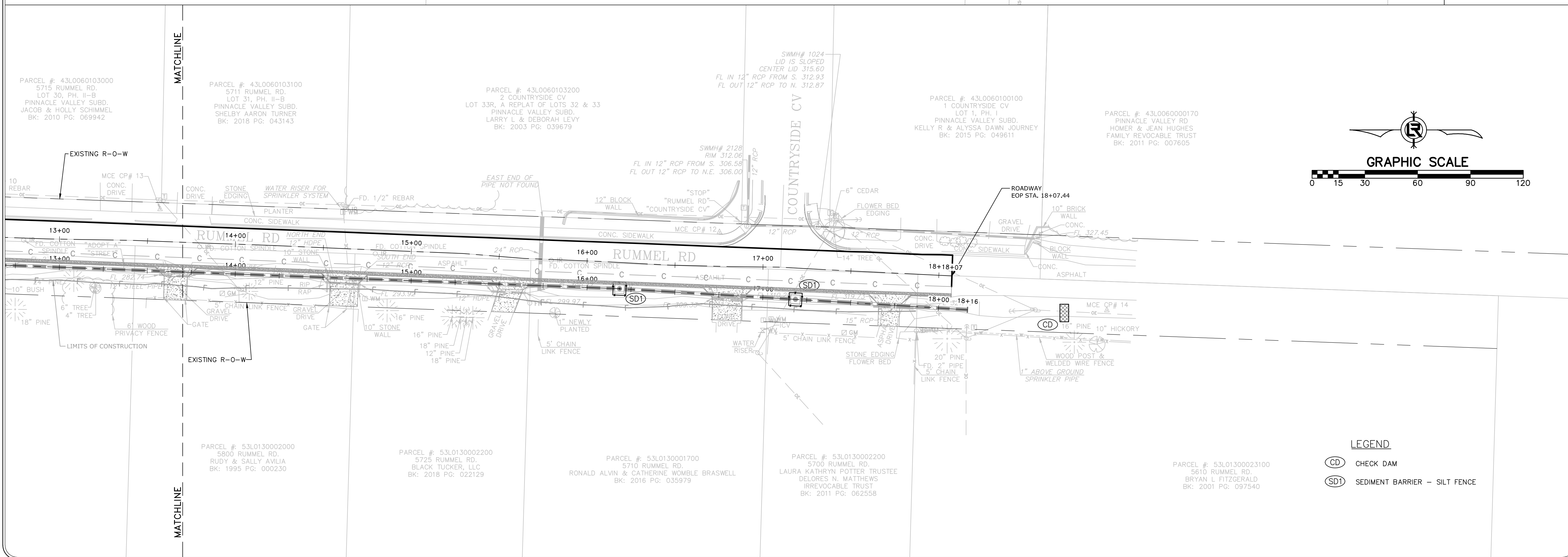
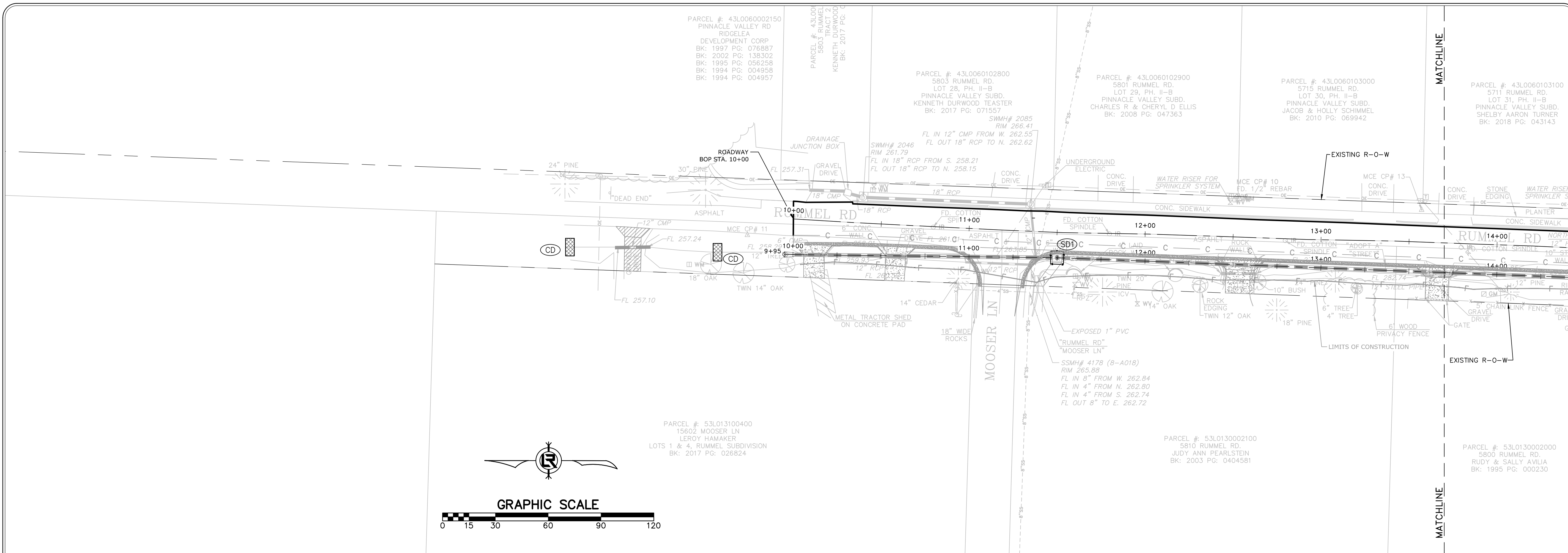


DEPARTMENT OF PUBLIC WORKS
 CIVIL ENGINEERING
 701 W. MARKHAM
 LITTLE ROCK, ARKANSAS 72201



DRAWN BY
JDM
 DESIGNED
NA
 CHECKED
KLS
 DATE
01/25/2019
 SCALE
1" = 30'
 PROJECT NO.
05-16-ST-224
 SHEET NO.
C5

W:\2018-18-5821-City of Little Rock Rummel Rd. Reconstruction\Design Drawings\18-5821-DESIGN.dwg 10/25/19 at 8:45am



- LEGEND**
- (CD) CHECK DAM
 - (SD1) SEDIMENT BARRIER - SILT FENCE

REVISIONS	DATE

CITY OF LITTLE ROCK, ARKANSAS
RUMMEL RD. RECONSTRUCTION
EROSION CONTROL PLAN


DEPARTMENT OF PUBLIC WORKS
CIVIL ENGINEERING
701 W. MARKHAM
LITTLE ROCK, ARKANSAS 72201

J. KRISHNAMOORTHY
NO. 15912
10-24-2019

DRAWN BY
JAM
DESIGNED
JJW
CHECKED
MK
DATE
10/24/2019
SCALE
1"=30'
PROJECT NO.
05-16-ST-224
SHEET NO.
C6

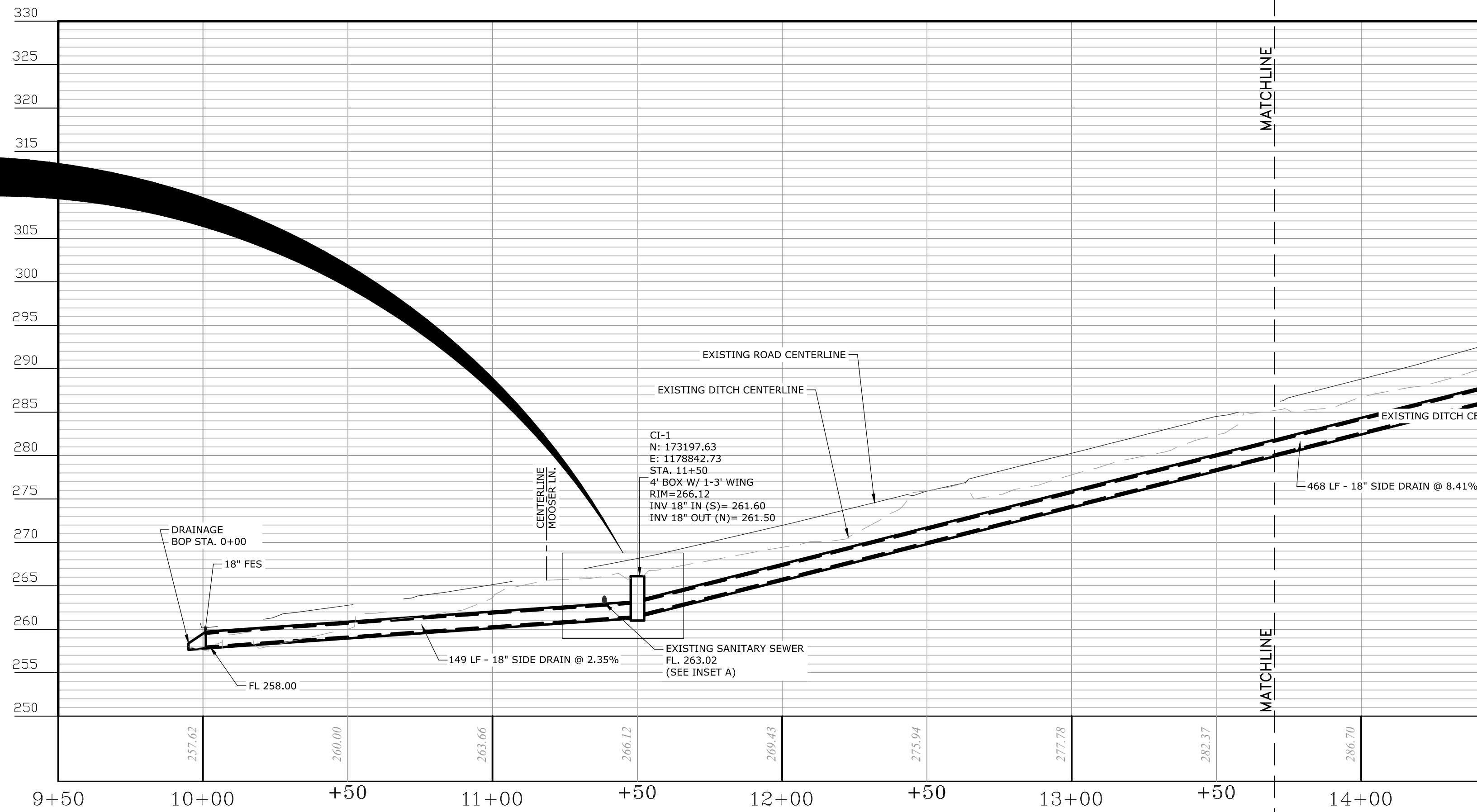
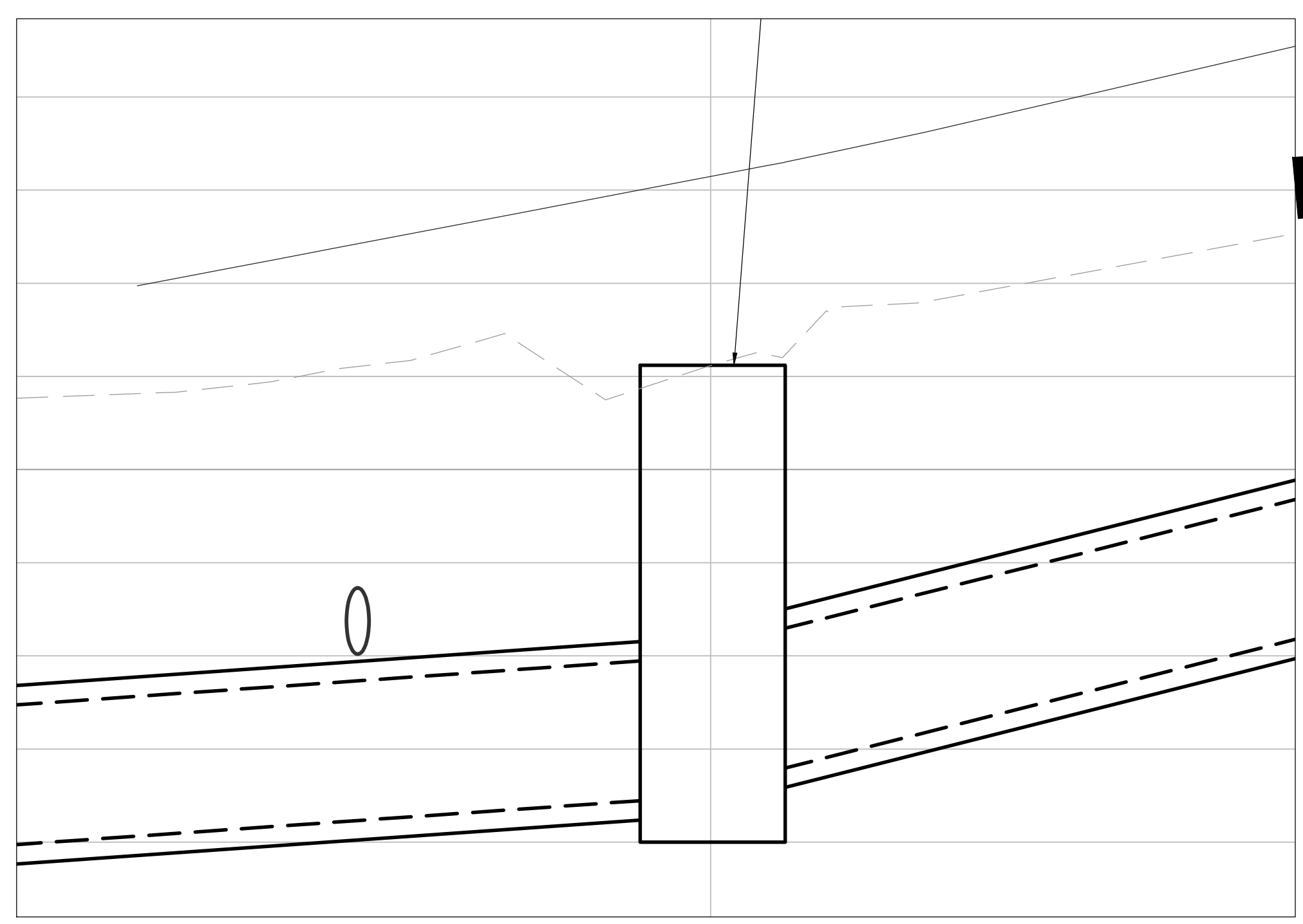
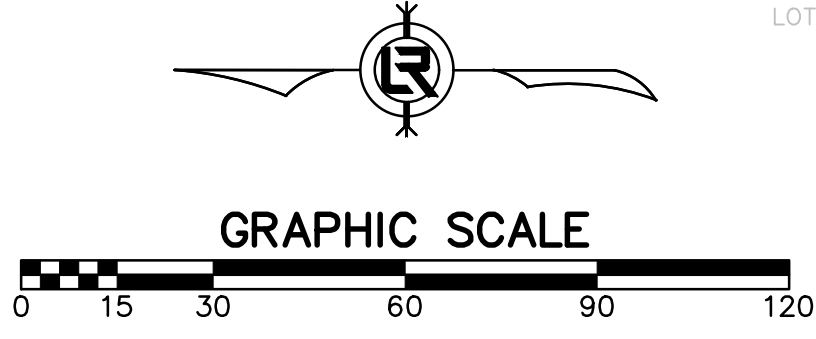
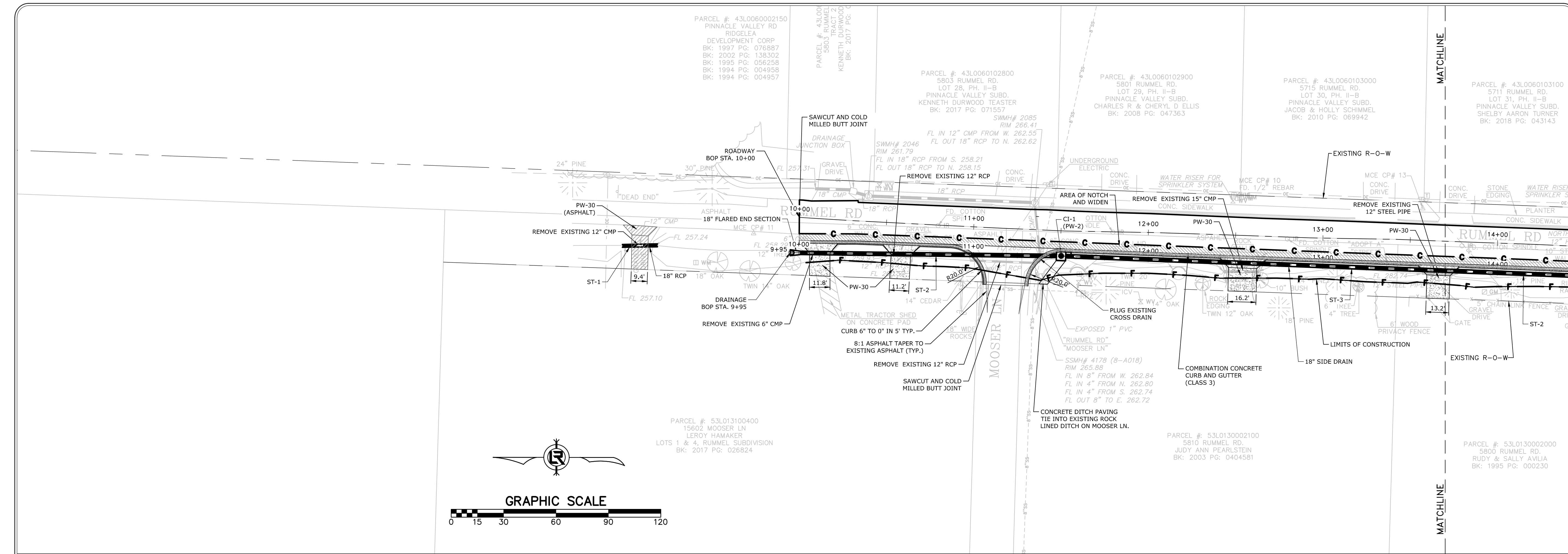
REVISIONS	DATE

CITY OF LITTLE ROCK, ARKANSAS
RUMMEL RD. RECONSTRUCTION
PLAN AND PROFILE


 DEPARTMENT OF PUBLIC WORKS
 CIVIL ENGINEERING
 701 W. MARKHAM
 LITTLE ROCK, ARKANSAS 72201

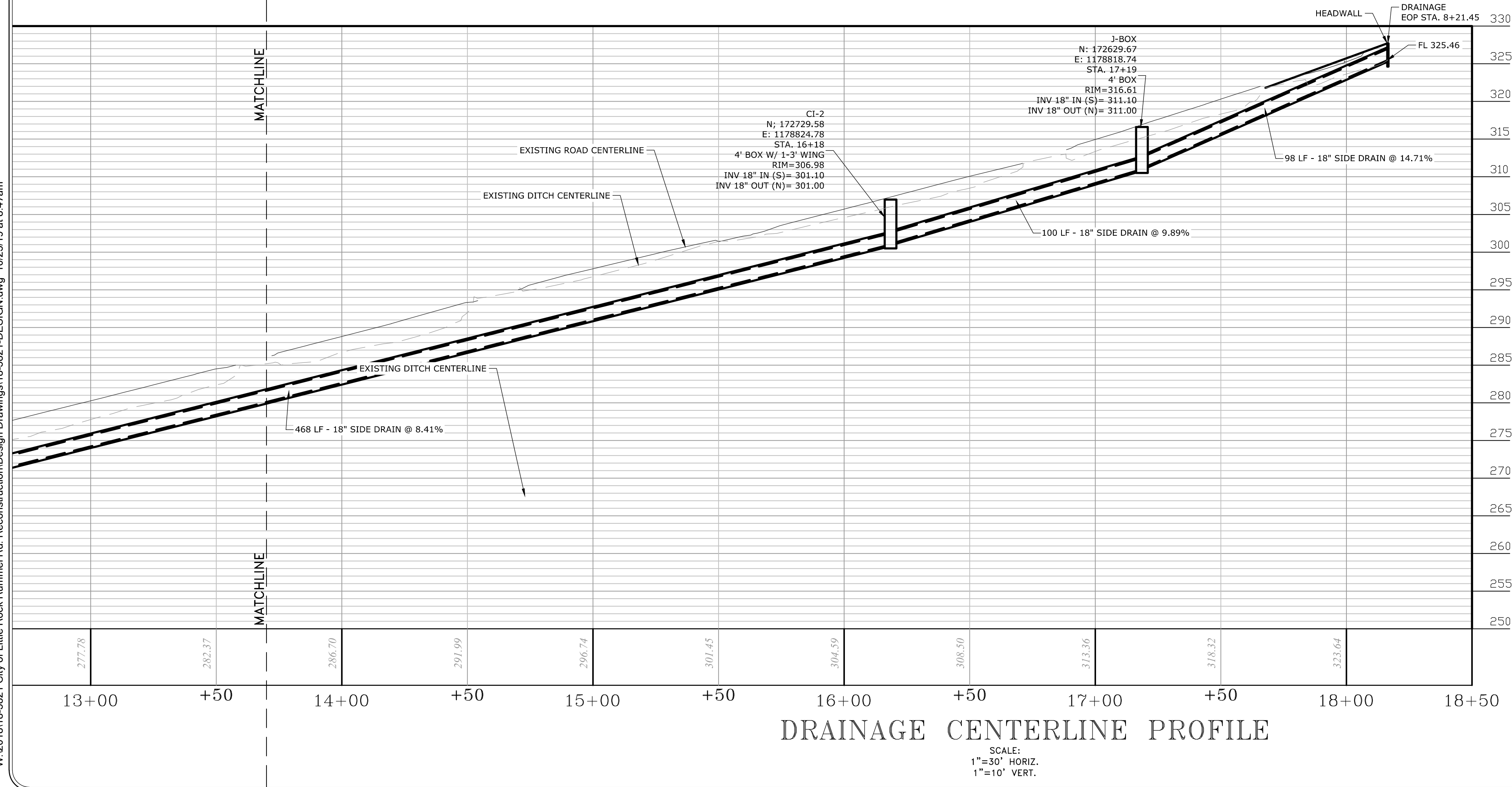
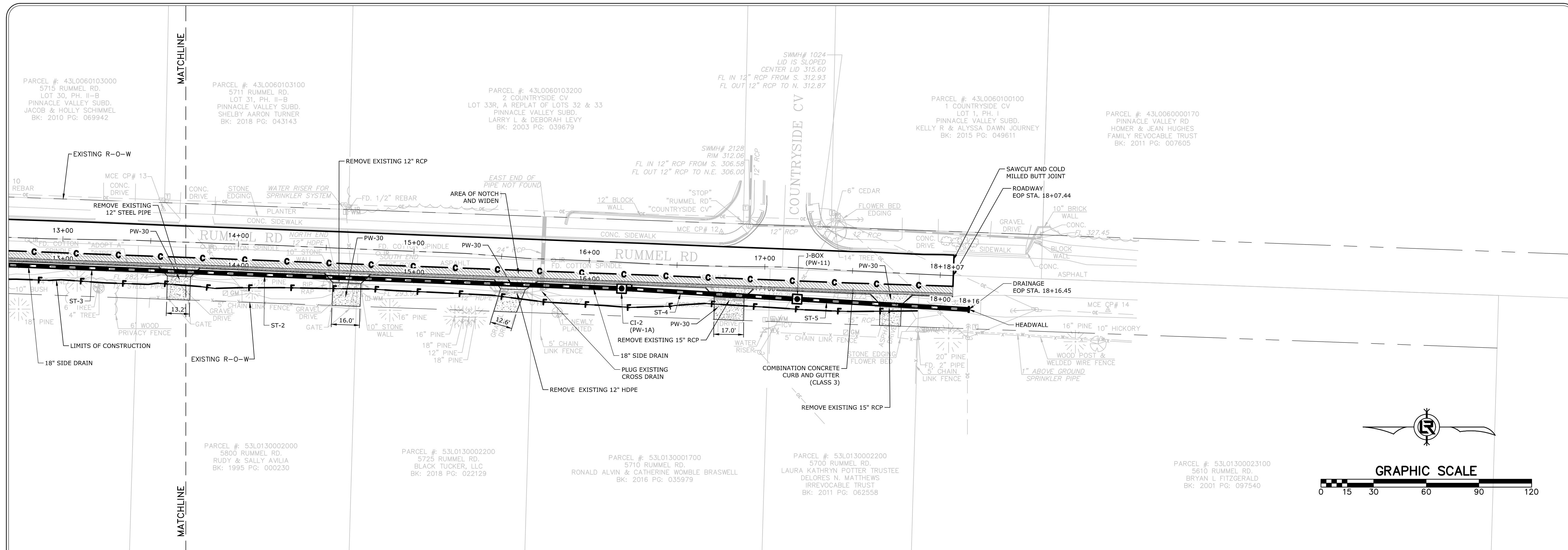

 STATE OF ARKANSAS
 LICENSED PROFESSIONAL ENGINEER
 No. 15912
 10-24-2019


DRAWN BY
 JAM
DESIGNED
 JJW
CHECKED
 MK
DATE
 10/24/2019
SCALE
 AS SHOWN
PROJECT NO.
 05-16-ST-224
SHEET NO.
 C7



W:\2018\18-5821 City of Little Rock Rummel Rd. Reconstruction\Design Drawings\18-5821-DESIGN.dwg 10/25/19 at 8:46am

W:\2018\18-5821-City of Little Rock Rummel Rd. Reconstruction\Design Drawings\18-5821-DESIGN.dwg 10/25/19 at 8:47am

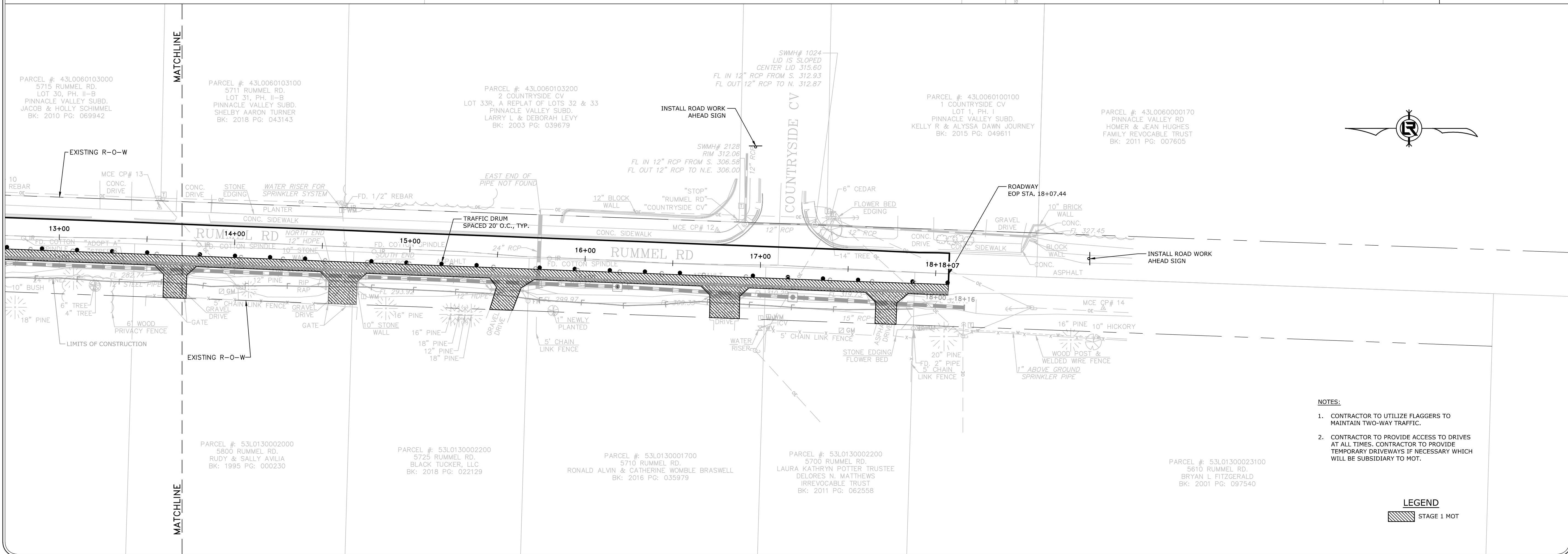
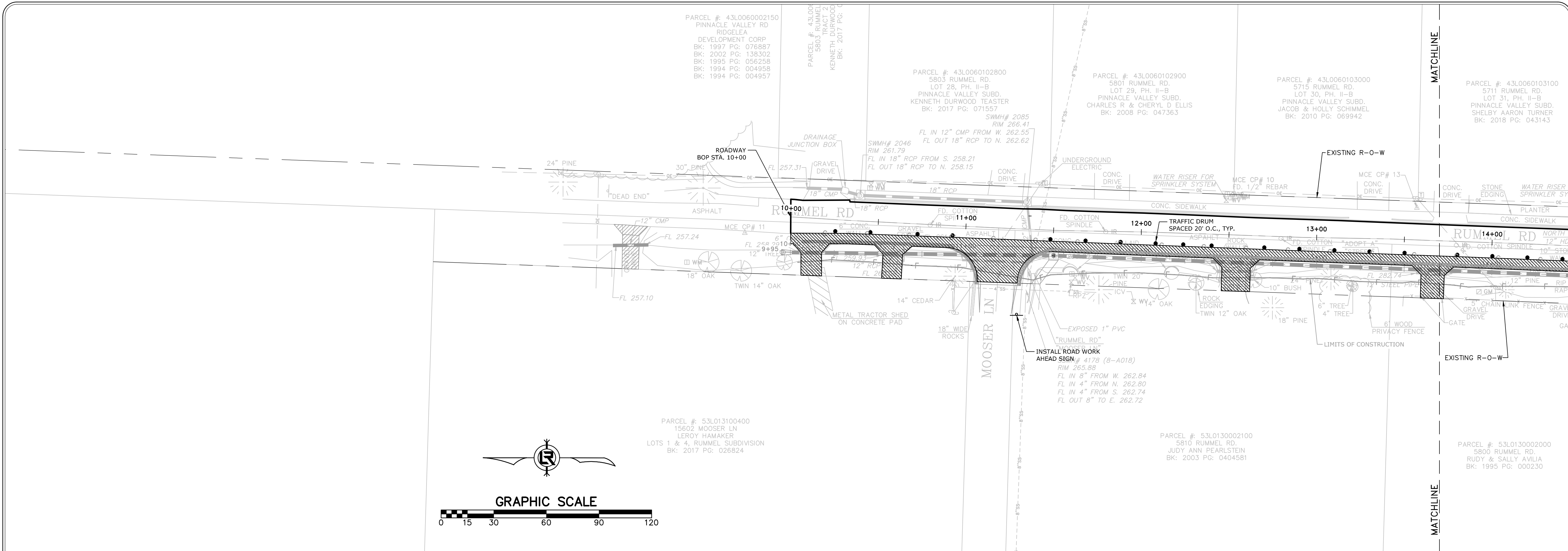



 DEPARTMENT OF PUBLIC WORKS
 CIVIL ENGINEERING
 701 W. MARKHAM
 LITTLE ROCK, ARKANSAS 72201

STATE OF ARKANSAS
 LICENSED PROFESSIONAL ENGINEER
 No. 15912
 MANFRESH KRISHNA
 10-24-2019

DRAWN BY
 JAM
DESIGNED
 JJW
CHECKED
 MK
DATE
 10/24/2019
SCALE
 AS SHOWN
PROJECT NO.
 05-16-ST-224
SHEET NO.
 C8

W:\2018\18-5821 City of Little Rock Rummel Rd. Reconstruction\Design Drawings\18-5821-DESIGN.dwg 10/25/19 at 8:47am



- NOTES:
- CONTRACTOR TO UTILIZE FLAGGERS TO MAINTAIN TWO-WAY TRAFFIC.
 - CONTRACTOR TO PROVIDE ACCESS TO DRIVES AT ALL TIMES. CONTRACTOR TO PROVIDE TEMPORARY DRIVEWAYS IF NECESSARY WHICH WILL BE SUBSIDIARY TO MOT.

LEGEND
 STAGE 1 MOT

REVISIONS	DATE

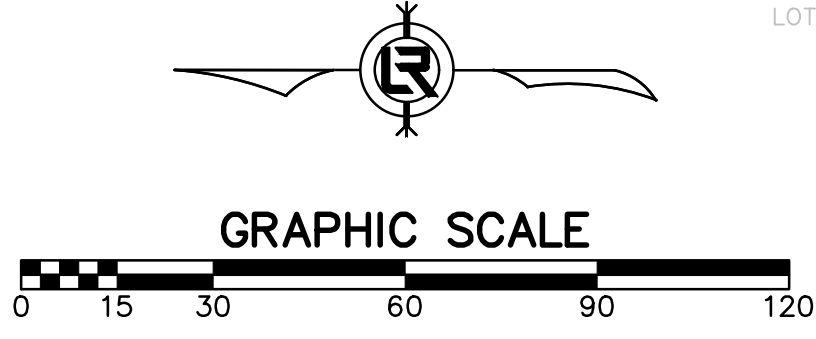
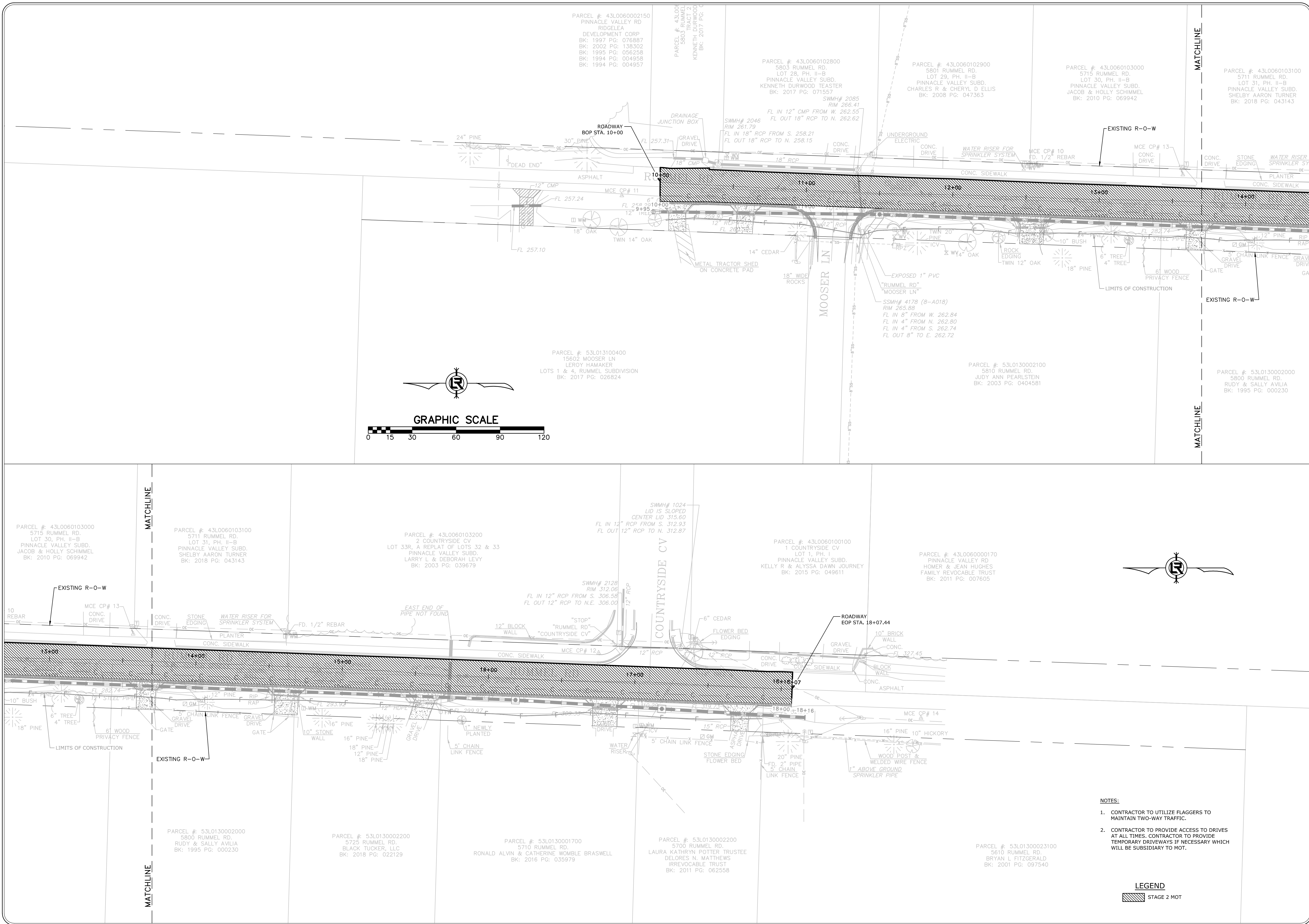
CITY OF LITTLE ROCK, ARKANSAS
RUMMEL RD. RECONSTRUCTION
 MAINTENANCE OF TRAFFIC STAGE 1

DEPARTMENT OF PUBLIC WORKS
 CIVIL ENGINEERING
 701 W. MARKHAM
 LITTLE ROCK, ARKANSAS 72201

STATE OF ARKANSAS
 LICENSED PROFESSIONAL ENGINEER
 J. KRISHNAMOORTHY
 No. 15912
 10-24-2019


DRAWN BY
JAM
 DESIGNED
JJW
 CHECKED
MK
 DATE
10/24/2019
 SCALE
1"=30'
 PROJECT NO.
05-16-ST-224
 SHEET NO.
C9

W:\2018\18-5821 City of Little Rock, Rummel Rd. Reconstruction\Design Drawings\18-5821-DESIGN.dwg 10/25/19 at 8:48am



REVISIONS	DATE

CITY OF LITTLE ROCK, ARKANSAS
RUMMEL RD. RECONSTRUCTION
MAINTENANCE OF TRAFFIC STAGE 2


DEPARTMENT OF PUBLIC WORKS
CIVIL ENGINEERING
 701 W. MARKHAM
 LITTLE ROCK, ARKANSAS 72201

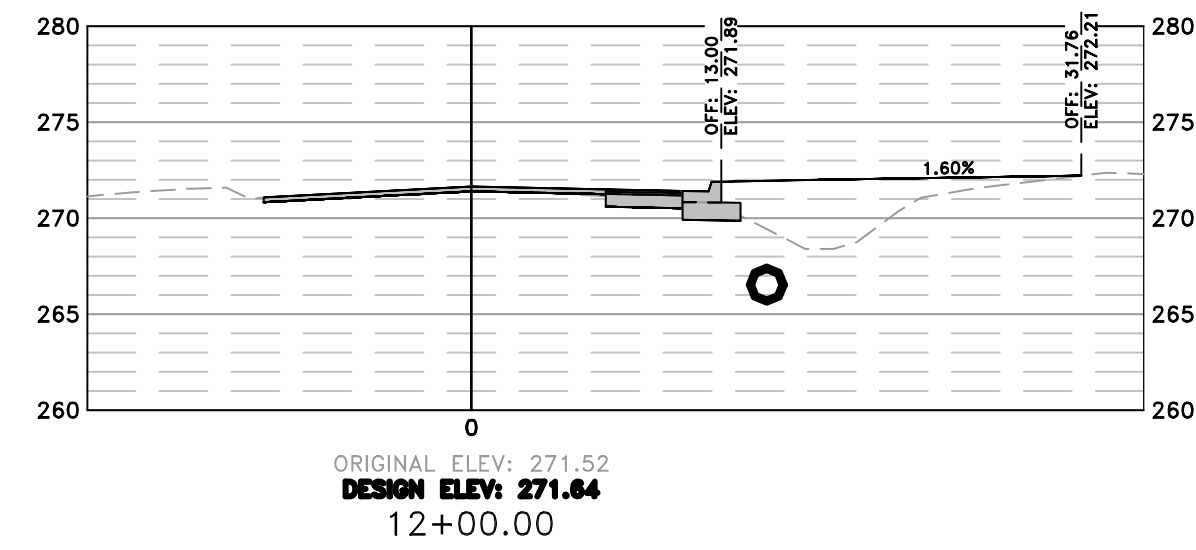

STATE OF ARKANSAS
LICENSED PROFESSIONAL ENGINEER
 J. W. KRISHNA
 No. 15912
 10-24-2019

DRAWN BY
JAM
DESIGNED
JJW
CHECKED
MK
DATE
10/24/2019
SCALE
1"=30'
PROJECT NO.
05-16-ST-224
SHEET NO.
C10

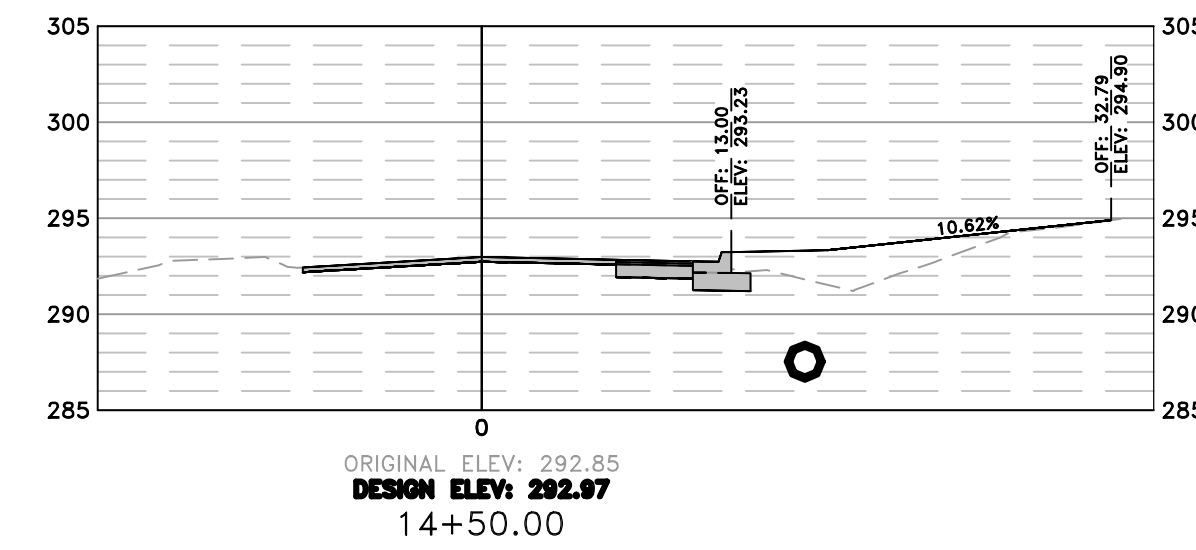
- NOTES:**
- CONTRACTOR TO UTILIZE FLAGGERS TO MAINTAIN TWO-WAY TRAFFIC.
 - CONTRACTOR TO PROVIDE ACCESS TO DRIVES AT ALL TIMES. CONTRACTOR TO PROVIDE TEMPORARY DRIVEWAYS IF NECESSARY WHICH WILL BE SUBSIDIARY TO MOT.

LEGEND
 STAGE 2 MOT

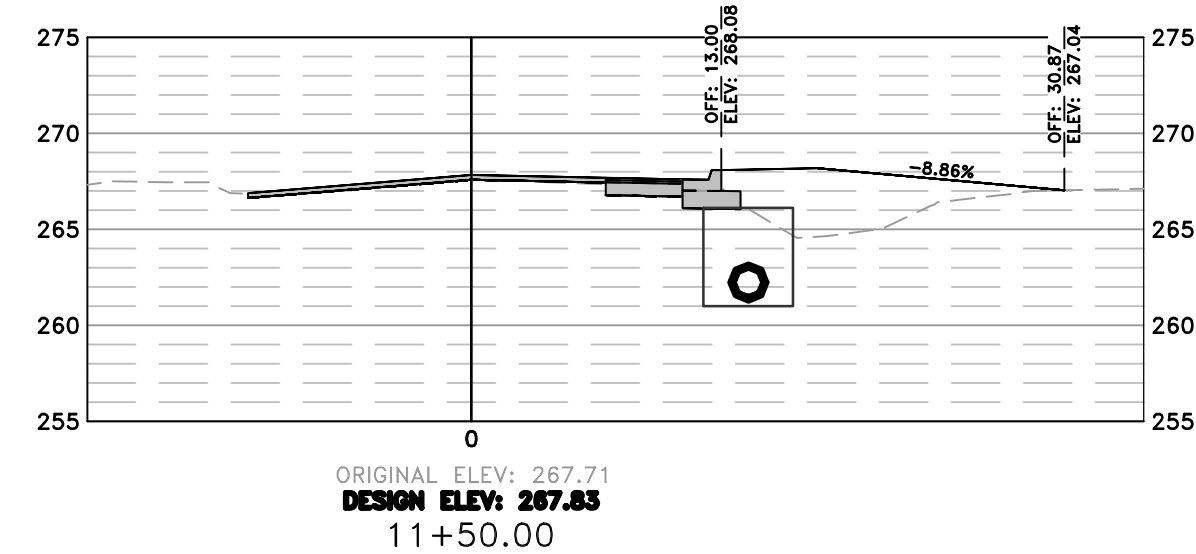
W:\2018\18-5821 City of Little Rock Rummel Rd. Reconstruction\Design Drawings\18-5821-DESIGN.dwg 10/25/19 at 8:49am



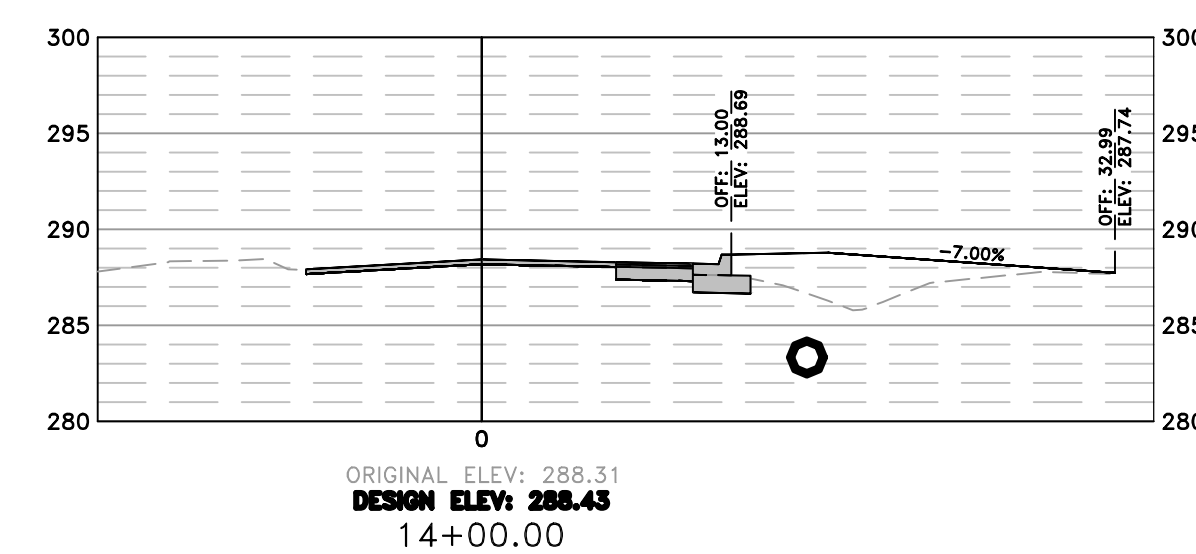
Total Volume at Station 12+00.00	
Cut Area	6.41
Fill Area	29.56
Cut Vol	12.46
Fill Vol	57.97



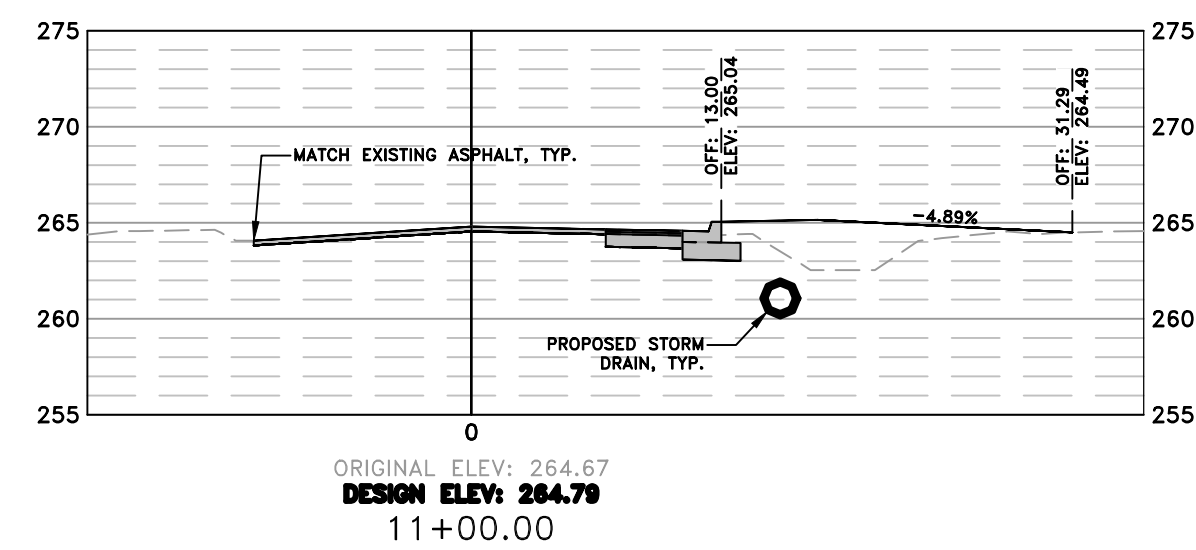
Total Volume at Station 14+50.00	
Cut Area	10.25
Fill Area	18.17
Cut Vol	16.81
Fill Vol	39.05



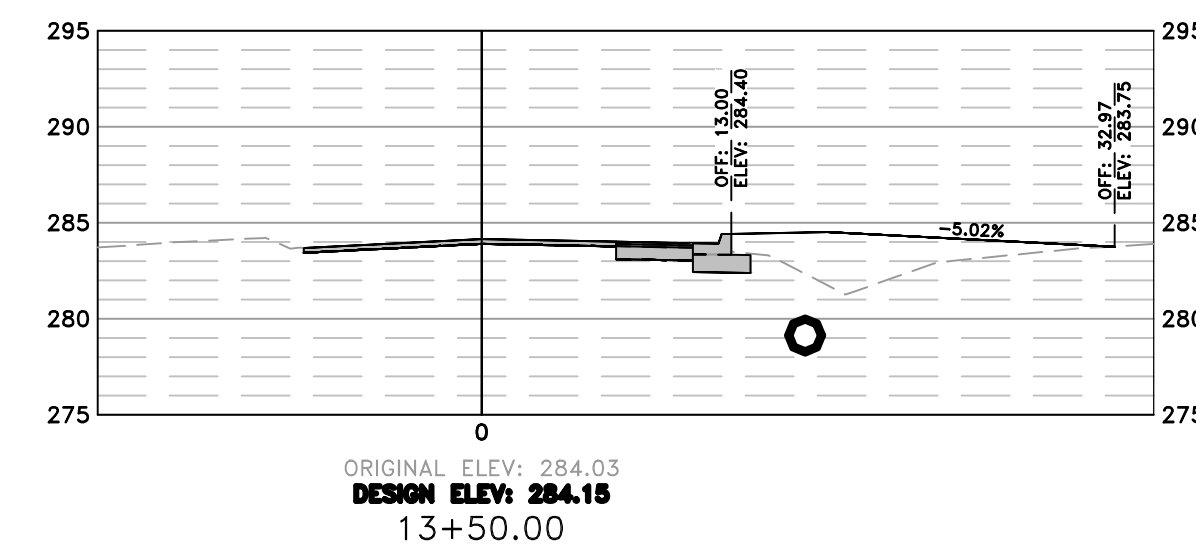
Total Volume at Station 11+50.00	
Cut Area	7.01
Fill Area	32.45
Cut Vol	15.18
Fill Vol	48.76



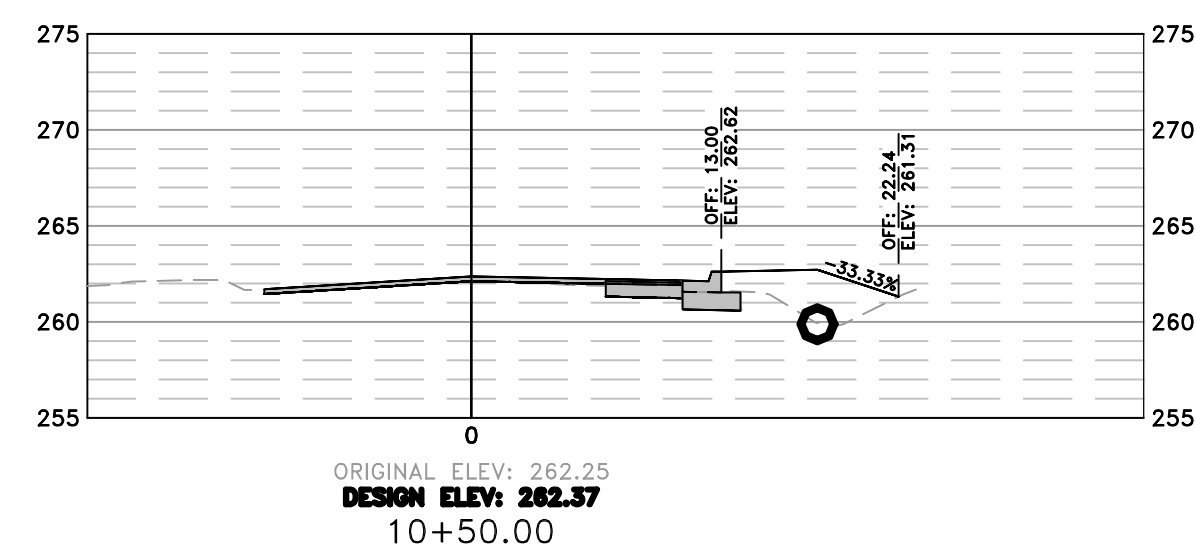
Total Volume at Station 14+00.00	
Cut Area	7.91
Fill Area	24.01
Cut Vol	15.18
Fill Vol	46.42



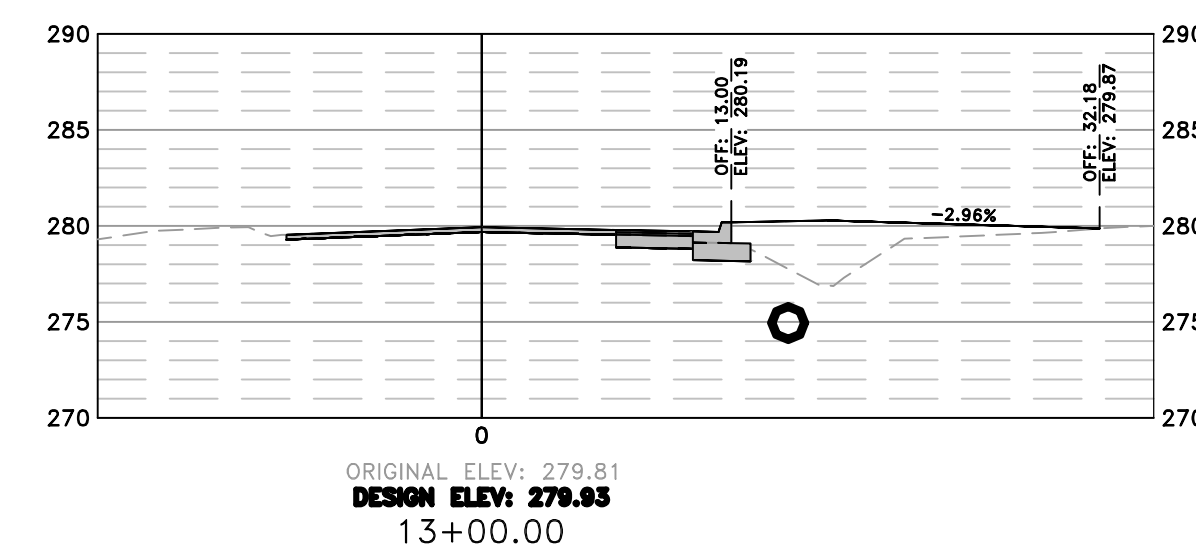
Total Volume at Station 11+00.00	
Cut Area	9.38
Fill Area	20.22
Cut Vol	15.57
Fill Vol	31.76



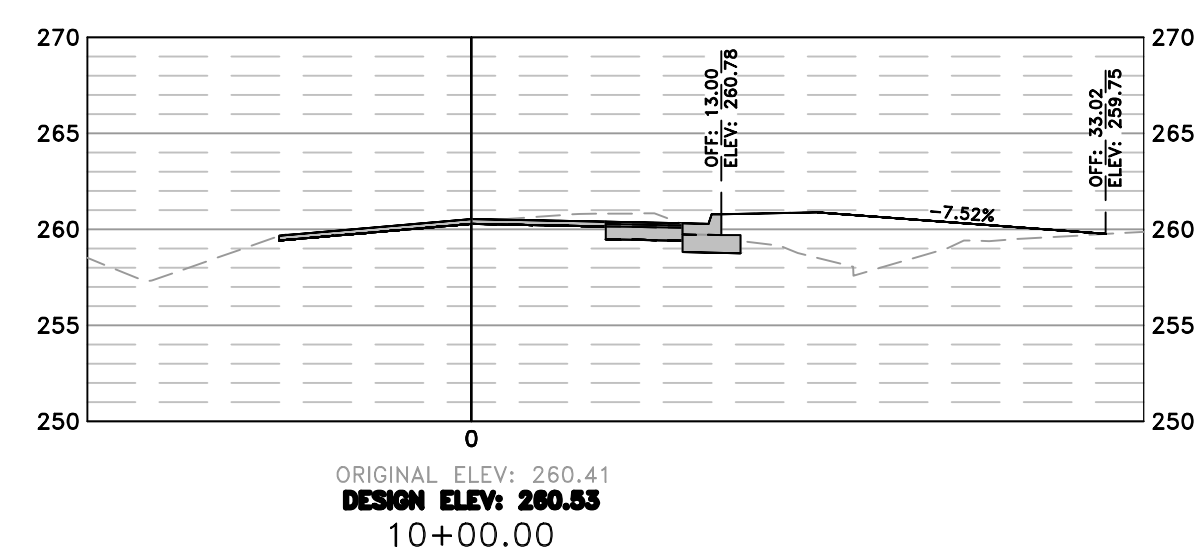
Total Volume at Station 13+50.00	
Cut Area	8.49
Fill Area	26.12
Cut Vol	15.57
Fill Vol	45.49



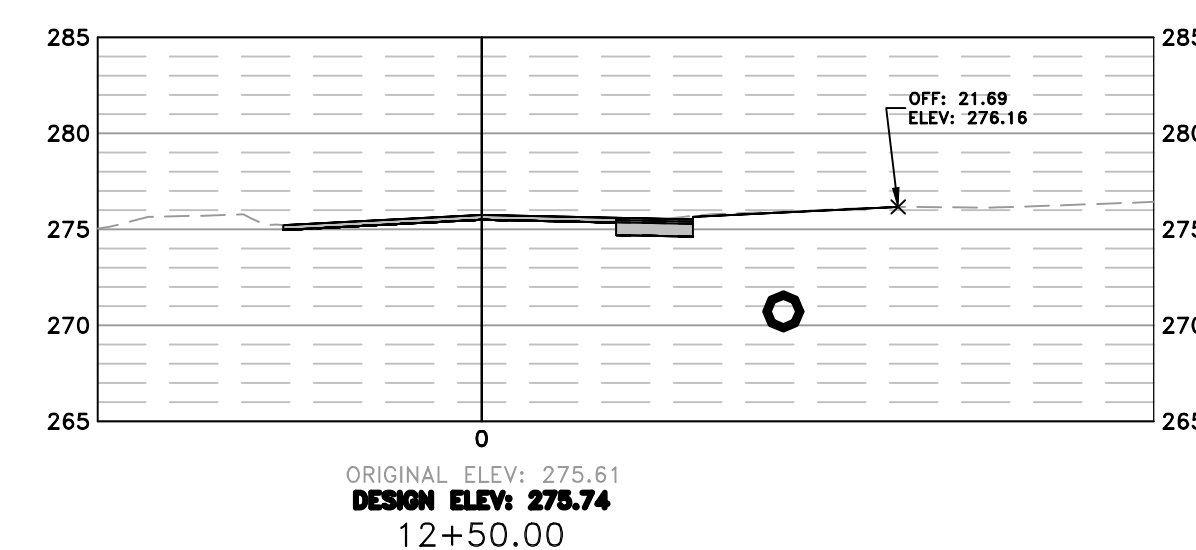
Total Volume at Station 10+50.00	
Cut Area	7.43
Fill Area	14.08
Cut Vol	18.70
Fill Vol	38.70



Total Volume at Station 13+00.00	
Cut Area	8.37
Fill Area	23.40
Cut Vol	14.44
Fill Vol	21.83



Total Volume at Station 10+00.00	
Cut Area	12.76
Fill Area	27.72
Cut Vol	0.00
Fill Vol	0.00



Total Volume at Station 12+50.00	
Cut Area	7.19
Fill Area	0.00
Cut Vol	12.57
Fill Vol	27.17

REVISIONS	DATE

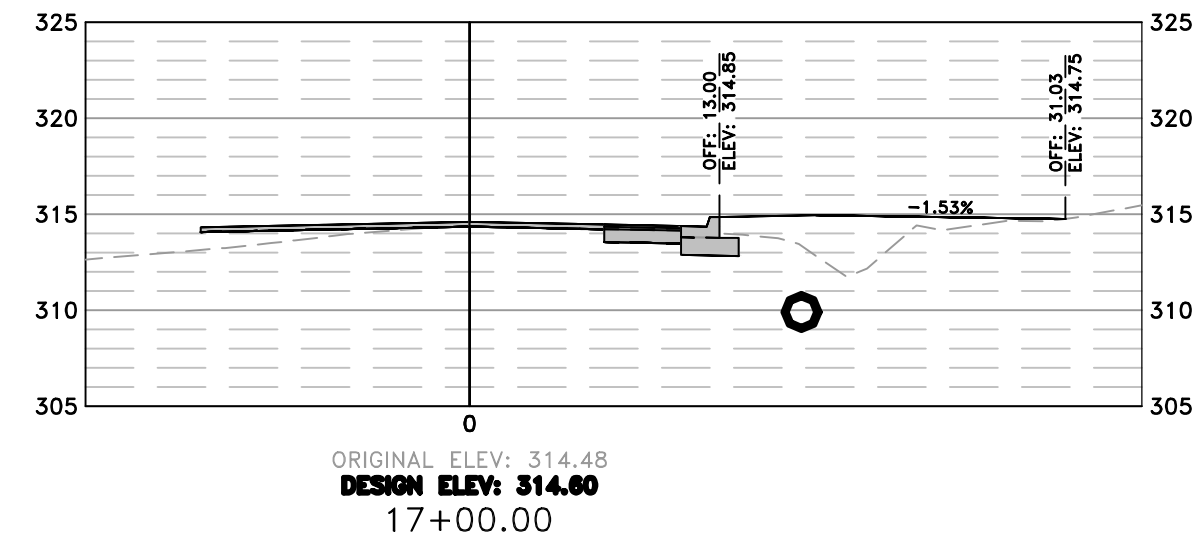
CITY OF LITTLE ROCK, ARKANSAS
RUMMEL RD. RECONSTRUCTION
CROSS SECTIONS

DEPARTMENT OF PUBLIC WORKS
CIVIL ENGINEERING
701 W. MARKHAM
LITTLE ROCK, ARKANSAS 72201

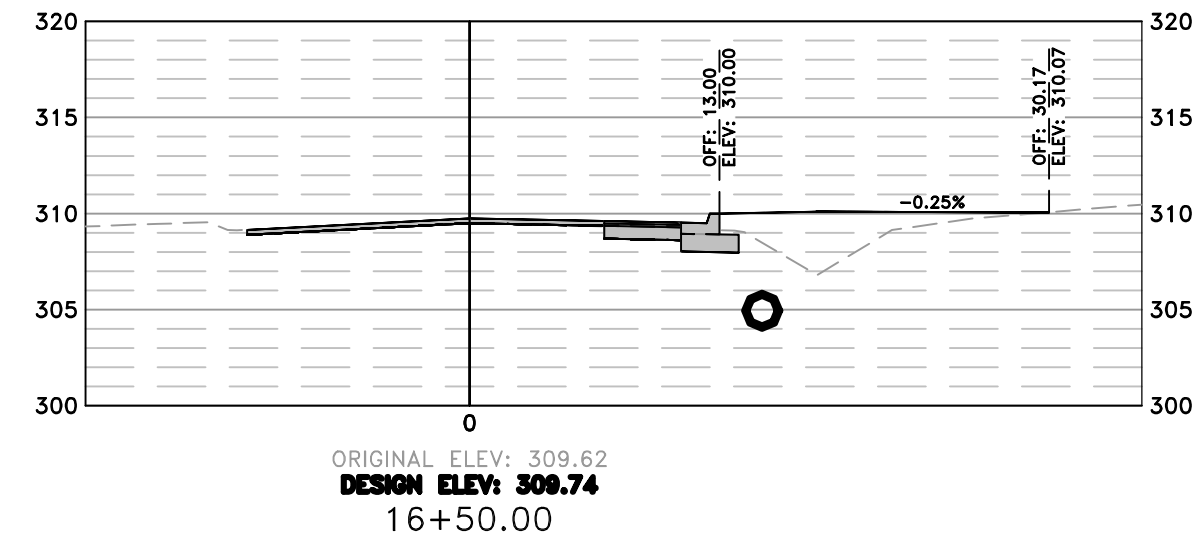
STATE OF ARKANSAS
LICENSED PROFESSIONAL ENGINEER
Manjesh Krishna
No. 15912
10-24-2019

DRAWN BY
JAM
DESIGNED
JJW
CHECKED
MK
DATE
10/24/2019
SCALE
AS SHOWN
PROJECT NO.
05-16-ST-224
SHEET NO.
C11

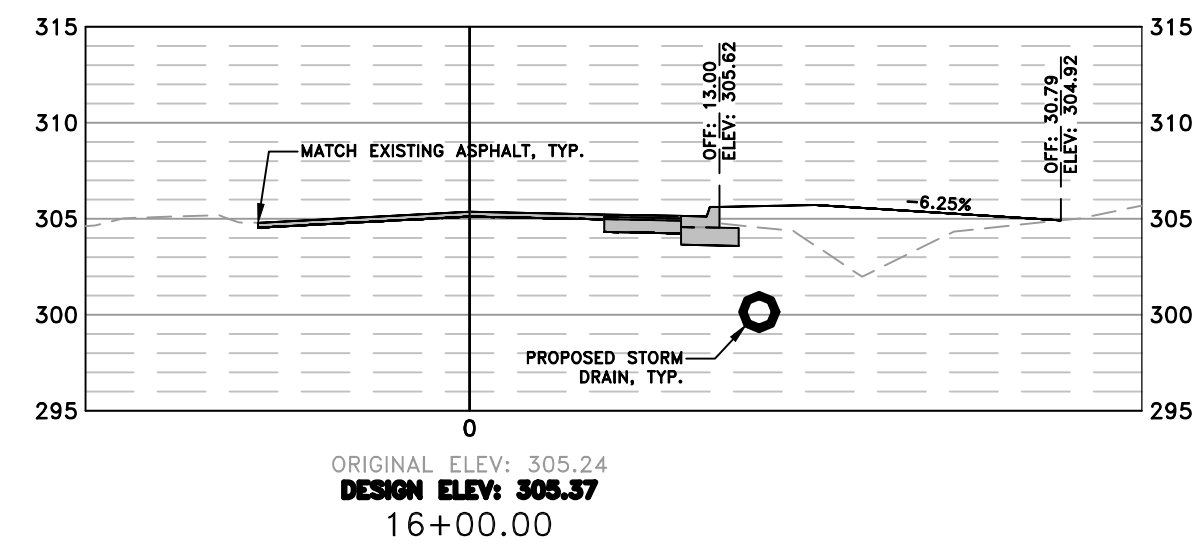
W:\2018\18-5821 City of Little Rock, Rummel Rd. Reconstruction\Design Drawings\18-5821-DESIGN.dwg 10/25/19 at 8:49am



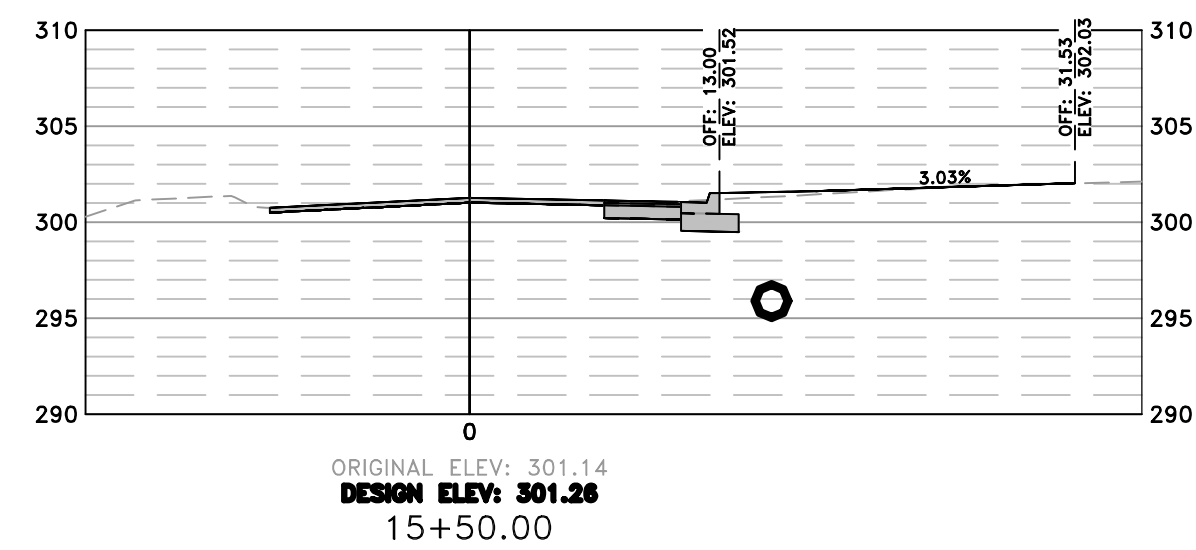
Total Volume at Station 17+00.00	
Cut Area	6.30
Fill Area	24.67
Cut Vol	13.31
Fill Vol	41.49



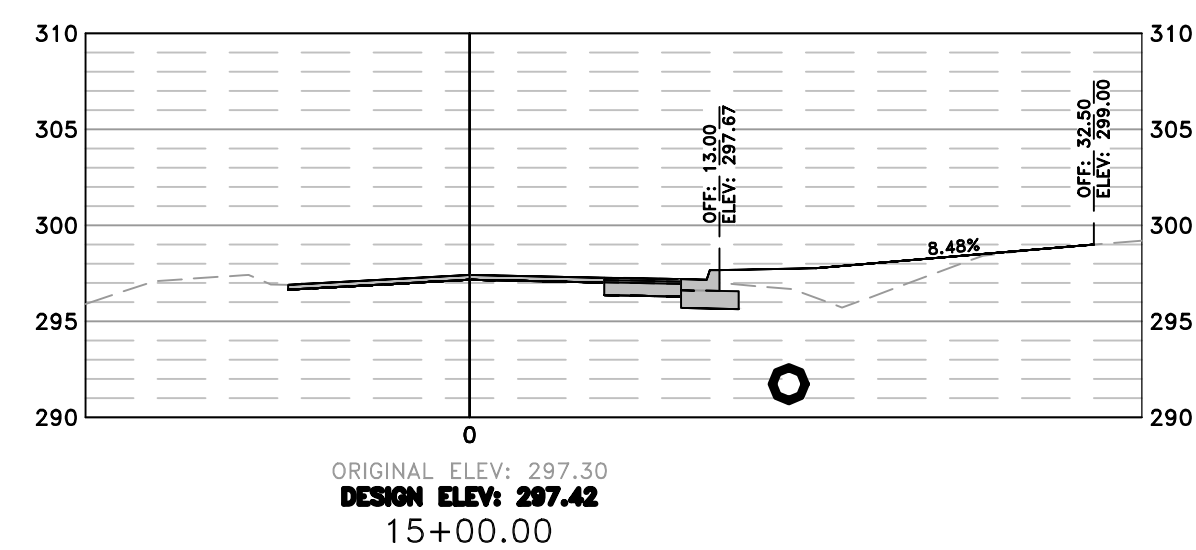
Total Volume at Station 16+50.00	
Cut Area	8.08
Fill Area	20.13
Cut Vol	15.81
Fill Vol	42.31



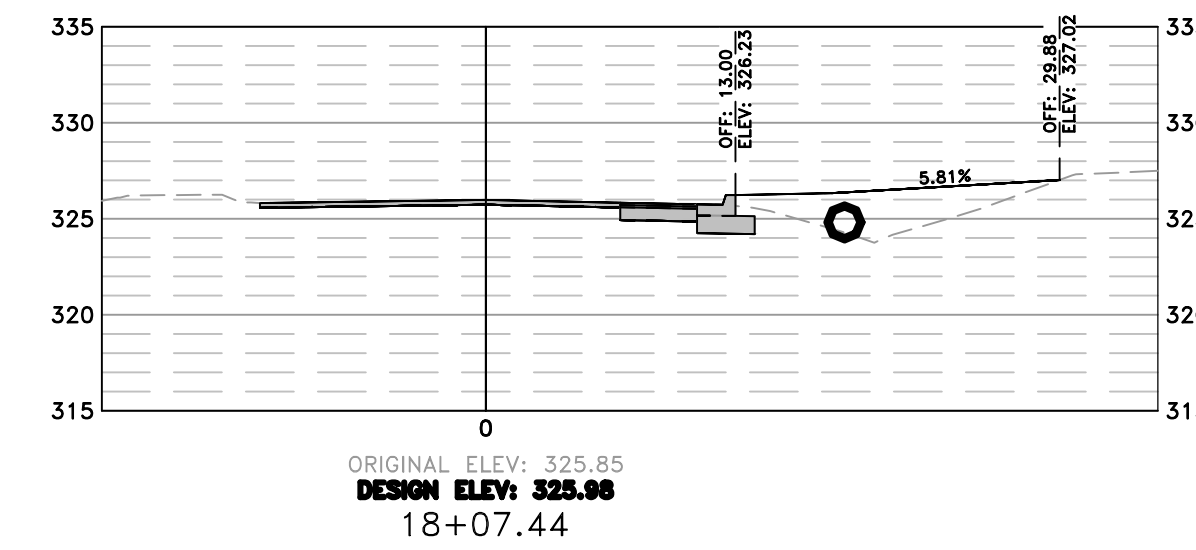
Total Volume at Station 16+00.00	
Cut Area	8.99
Fill Area	25.57
Cut Vol	19.20
Fill Vol	25.55



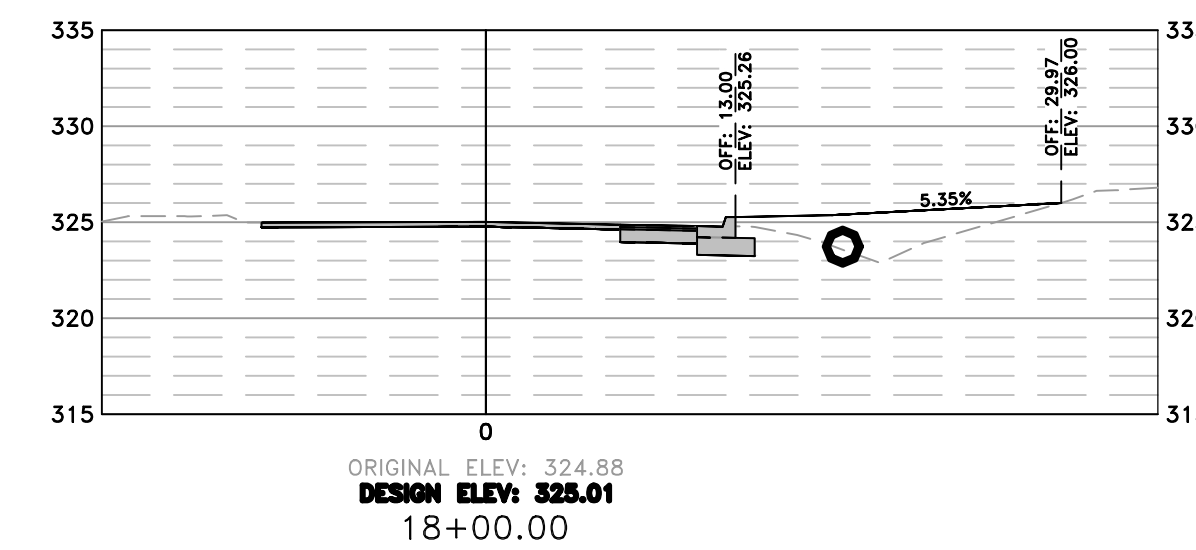
Total Volume at Station 15+50.00	
Cut Area	11.62
Fill Area	1.57
Cut Vol	20.87
Fill Vol	15.27



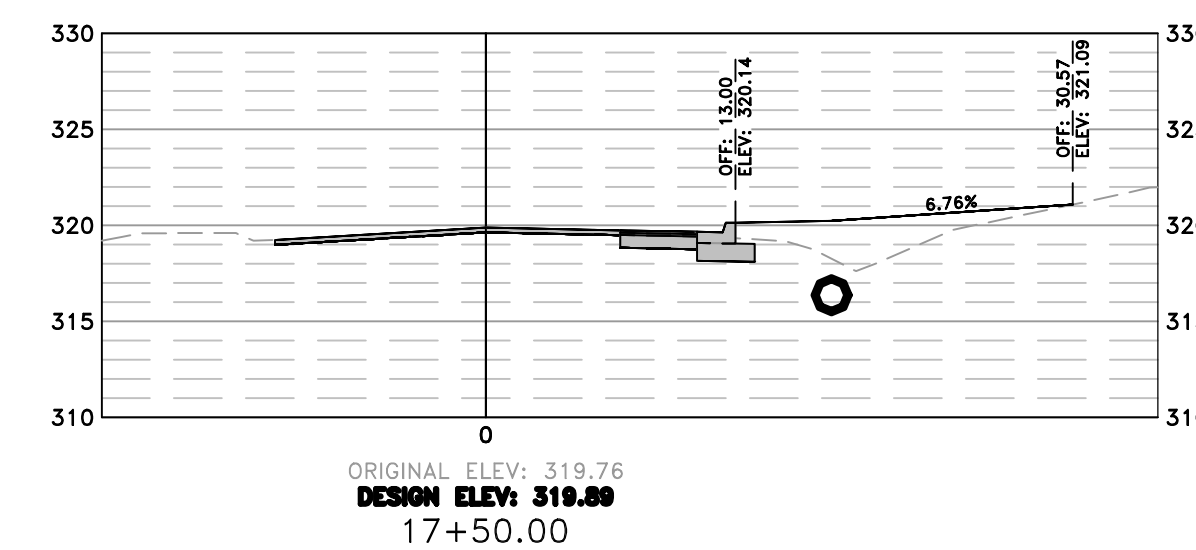
Total Volume at Station 15+00.00	
Cut Area	11.05
Fill Area	15.19
Cut Vol	19.72
Fill Vol	30.89



Total Volume at Station 18+07.44	
Cut Area	11.35
Fill Area	23.34
Cut Vol	3.15
Fill Vol	6.03



Total Volume at Station 18+00.00	
Cut Area	11.48
Fill Area	20.38
Cut Vol	19.36
Fill Vol	37.33



Total Volume at Station 17+50.00	
Cut Area	9.43
Fill Area	19.93
Cut Vol	14.48
Fill Vol	40.80

REVISIONS	DATE

CITY OF LITTLE ROCK, ARKANSAS
 RUMMEL RD. RECONSTRUCTION
 CROSS SECTIONS

DEPARTMENT OF PUBLIC WORKS
 CIVIL ENGINEERING
 701 W. MARKHAM
 LITTLE ROCK, ARKANSAS 72201

STATE OF ARKANSAS
 LICENSED PROFESSIONAL ENGINEER
 Manish Krishna
 No. 15912
 10-24-2019

DRAWN BY
JAM
 DESIGNED
JJW
 CHECKED
MK
 DATE
10/24/2019
 SCALE
AS SHOWN
 PROJECT NO.
05-16-ST-224
 SHEET NO.
C12