

CLR PROJECT # 01-17-ST-57

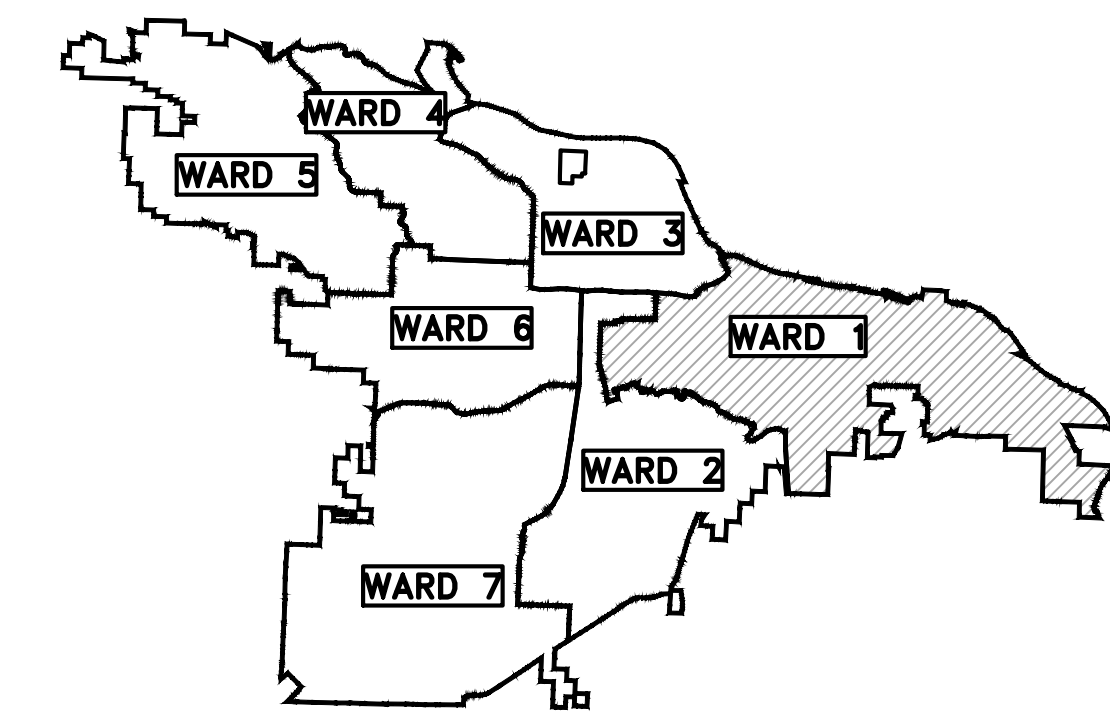
WEST 19th STREET RECONSTRUCTION

W 19th (GRANT TO EX. BRIDGE)

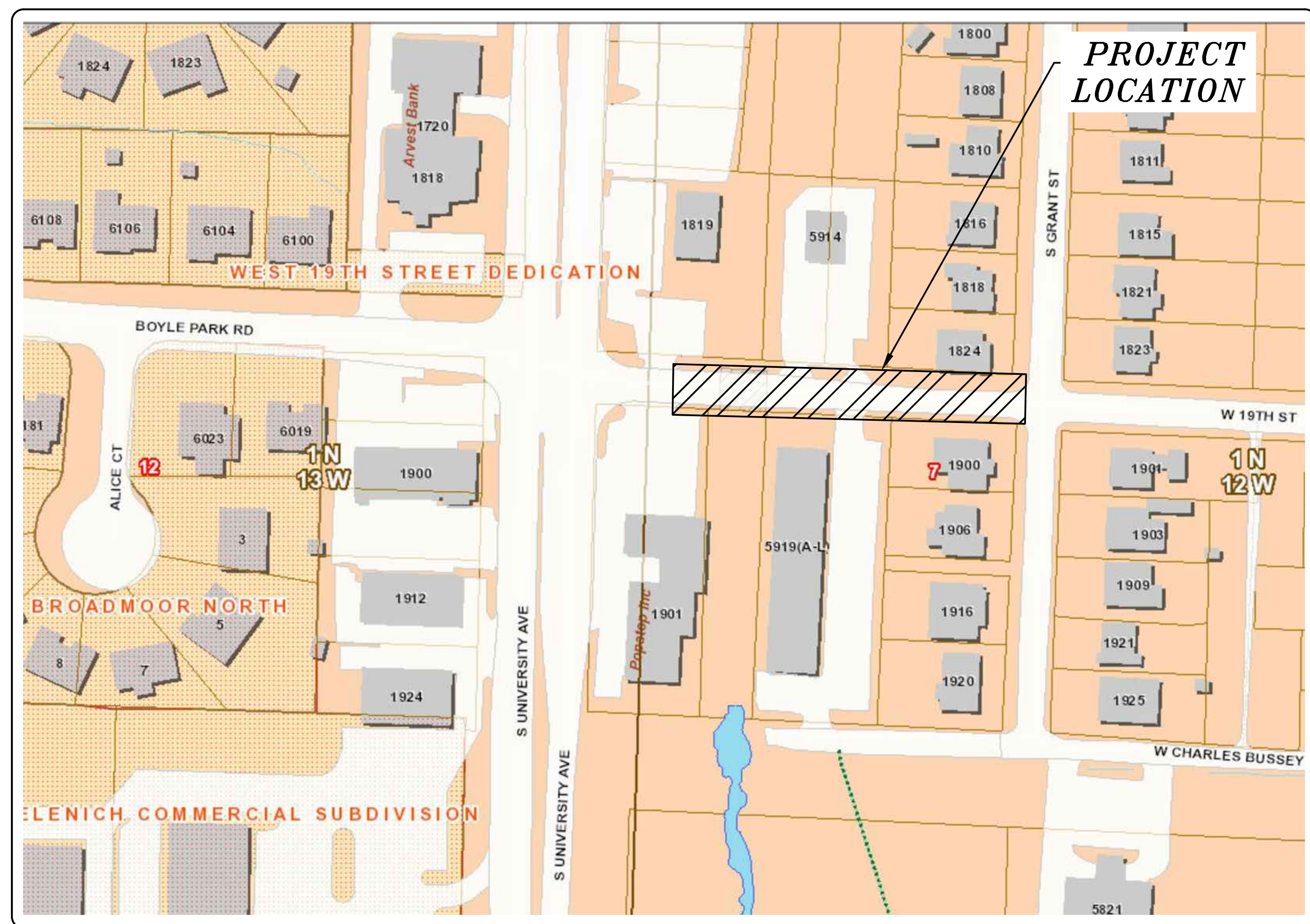
100% PLANS

REVISIONS	DATE

CITY OF LITTLE ROCK, ARKANSAS
 WEST 19th STREET RECONSTRUCTION
 COVER SHEET
 100% PLANS



PROJECT LOCATION - WARD 1

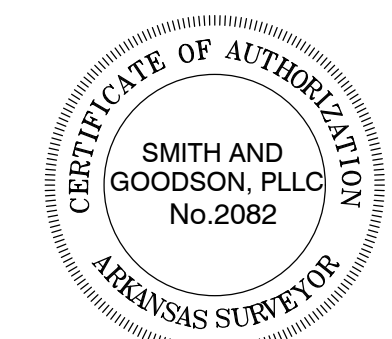


SHEET NO.	TITLE
C1	COVER SHEET
C2	LEGEND / GENERAL NOTES
C3	OVERALL PROJECT PLAN
C4	19th STREET PLAN & PROFILE SHEET 1 OF 1
C5	EROSION CONTROL PLAN



2019-2021
BOND PROGRAM

DEPARTMENT OF PUBLIC WORKS
 CIVIL ENGINEERING
 701 WEST MARKHAM STREET
 LITTLE ROCK, ARKANSAS 72201



SMITH AND GOODSON
 PLLC
 CIVIL ENGINEERING AND LAND SURVEYING
 7509 CANTRELL ROAD, SUITE 227
 LITTLE ROCK, ARKANSAS 72207
 501-414-8498

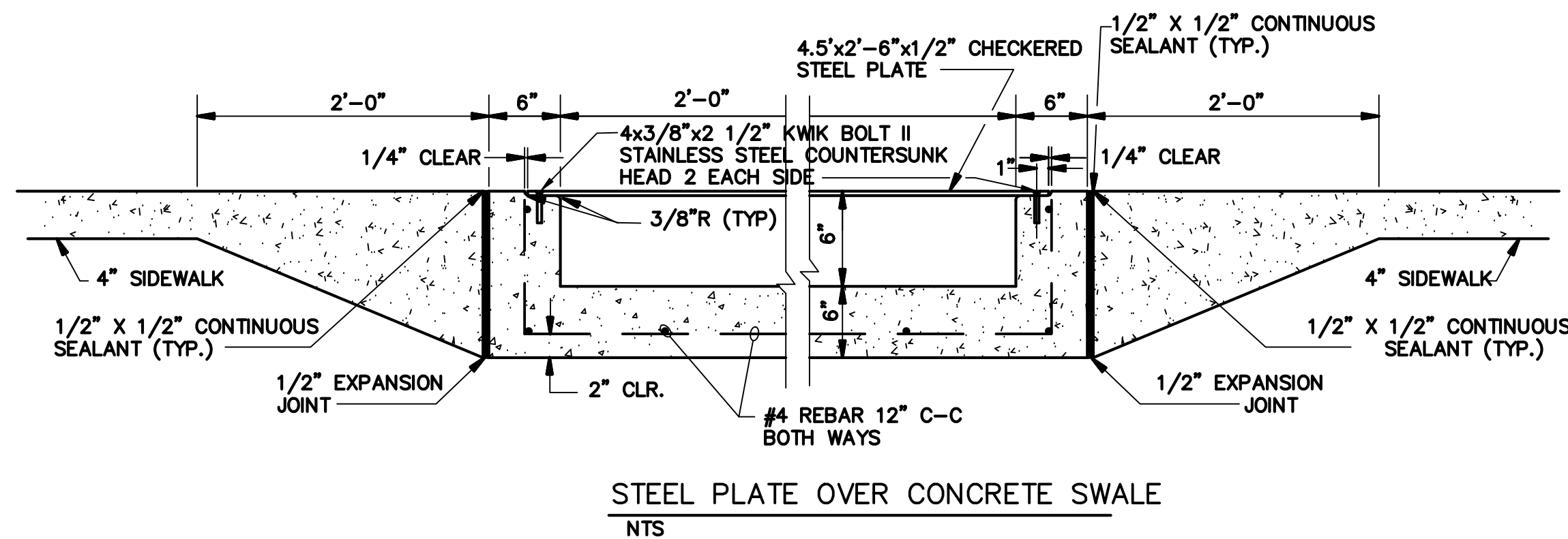
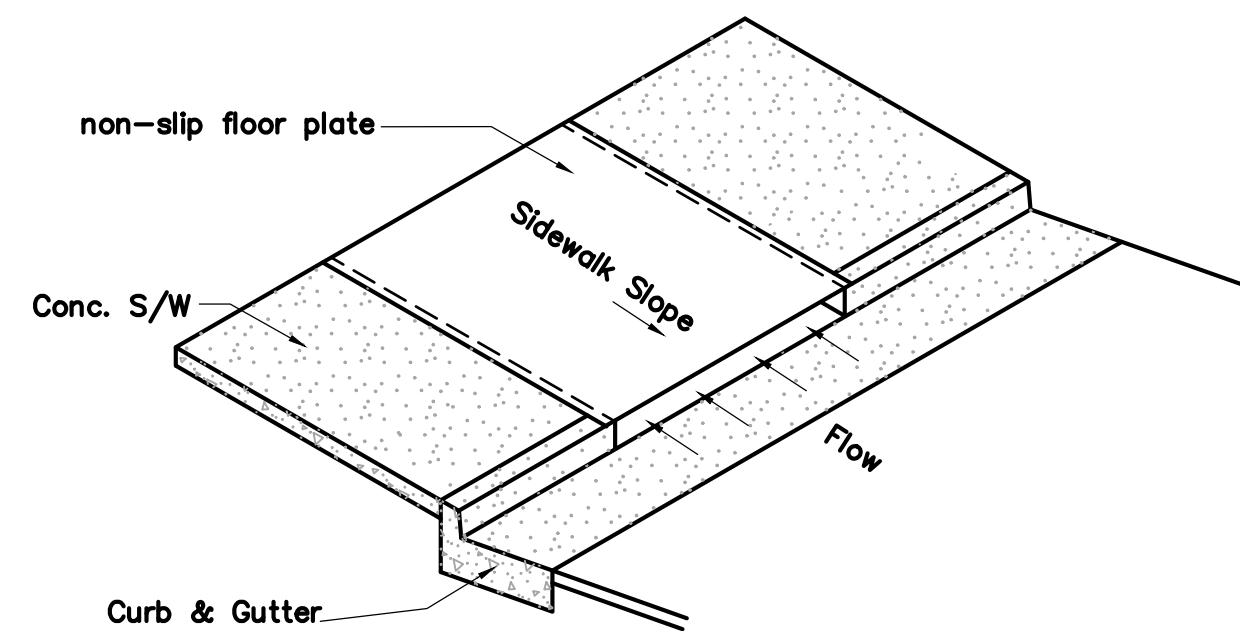
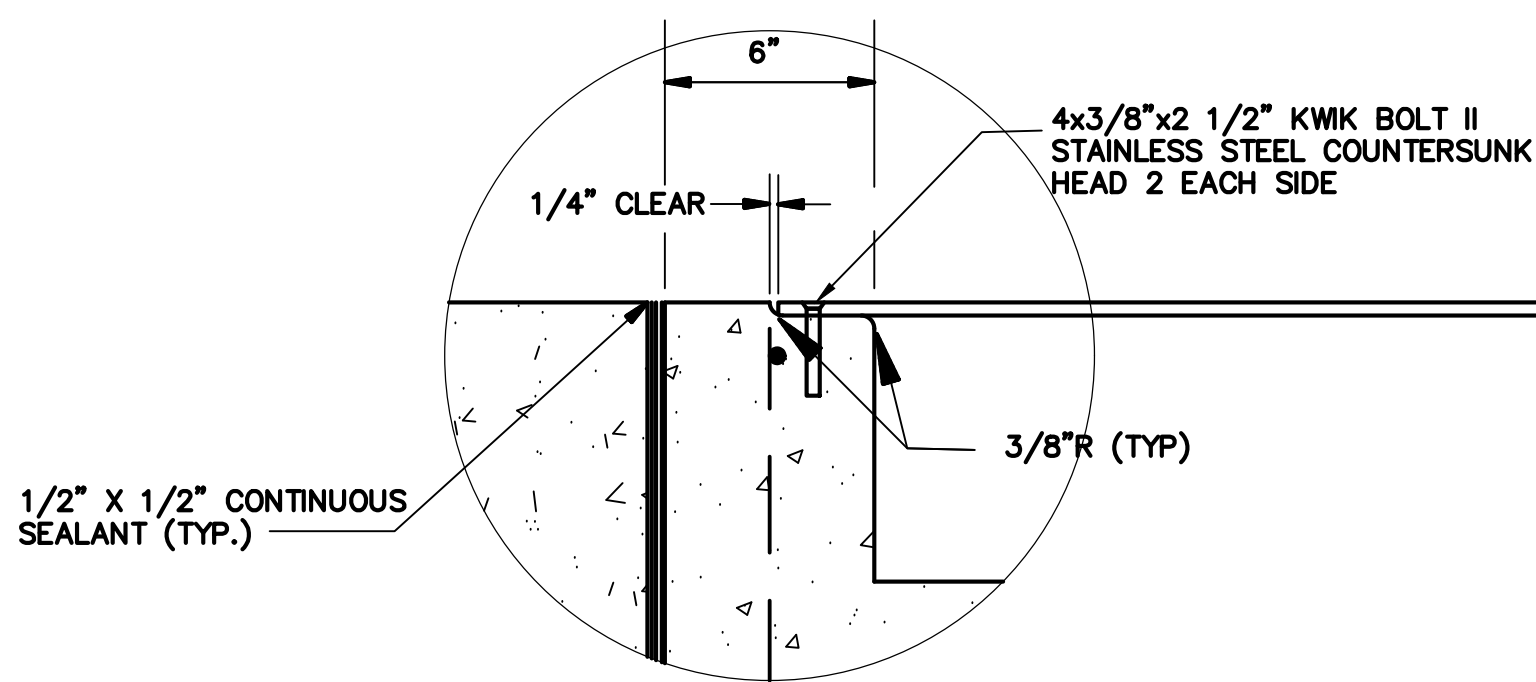
PROJECT ENGINEER:
JESS GRIFFIN, PE
 (501) 690-3456 - JGGRIFINPE@GMAIL.COM

DEPARTMENT OF PUBLIC WORKS
 CIVIL ENGINEERING
 701 W. MARKHAM
 LITTLE ROCK, ARKANSAS 72201

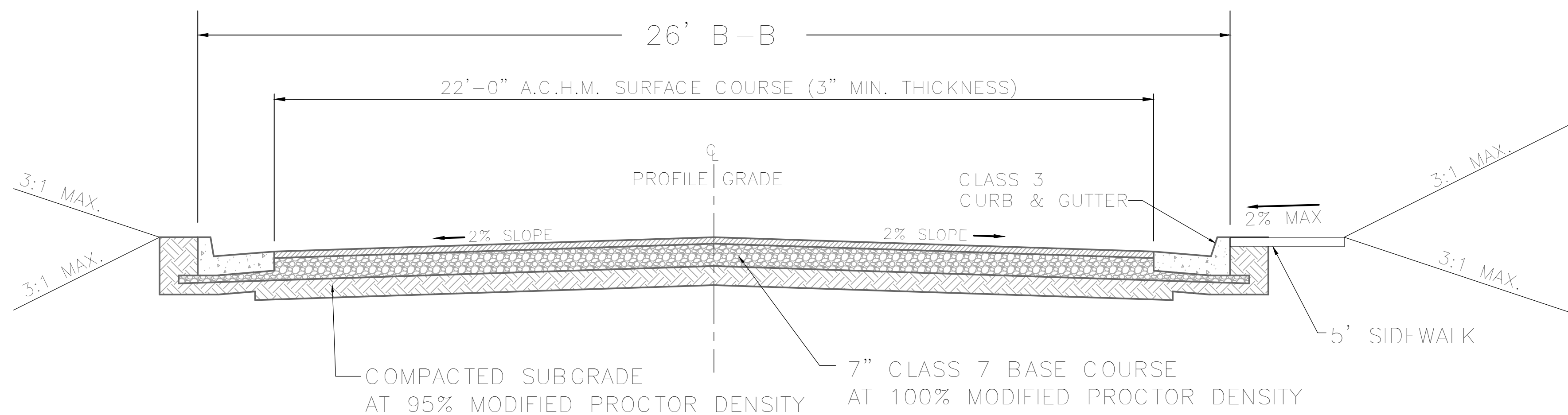


DRAWN BY J. GRIFFIN
DESIGNED J. GRIFFIN
CHECKED A. SMITH
DATE 10/01/2019
SCALE NTS
PROJECT NO. CLR # 01-17-ST-57
SHEET NO. C1

Item No.	Item Description	Quantity	Unit
2.01	SITE PREPARATION	1	LS
3.06	BORROW MATERIAL	142	CY
4.01	AGGREGATE BASE COURSE - CLASS 7	210	TON
6.01	ACHM SURFACE COURSE (3" THICK) - TYPE 2	90	TON
7.04	CONCRETE DRIVEWAY (6" THICK), STANDARD FINISH	390	SF
8.03	CONCRETE CURB AND GUTTER (CLASS 3)	440	LF
9.04	CONCRETE SIDEWALK (4" THICK)	955	SF
10.04	CURB INLET - 4' BOX	3	Ea.
10.07	WING 3' EXTENTION	3	Ea.
13.24C	STORM DRAIN PIPES, 24" RCP (SIDE DRAIN)	100	LF
14.01	SOLID SODDING, BERMUADA (INCLUDES 4" OF TOP SOIL)	500	SY
16.01	MAINTENANCE OF TRAFFIC	1	LS
18.55	WATER FOR DUST CONTROL	2000	GAL
19.01	FINAL CLEANUP	1	LS
24.06	SEDIMENT BARRIER, SILT FENCE (SD1)	3	EA
24.11	SILT FENCE - TYPE A (SFA)	425	LF
24.20	TEMPORARY SEEDING	0.1	AC



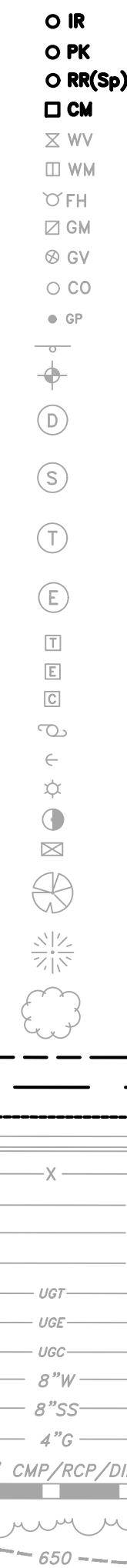
STEEL PLATE OVER CONCRETE SWALE
NTS



RESIDENTIAL STREET TYPICAL SECTION
(STREET RECONSTRUCTION)

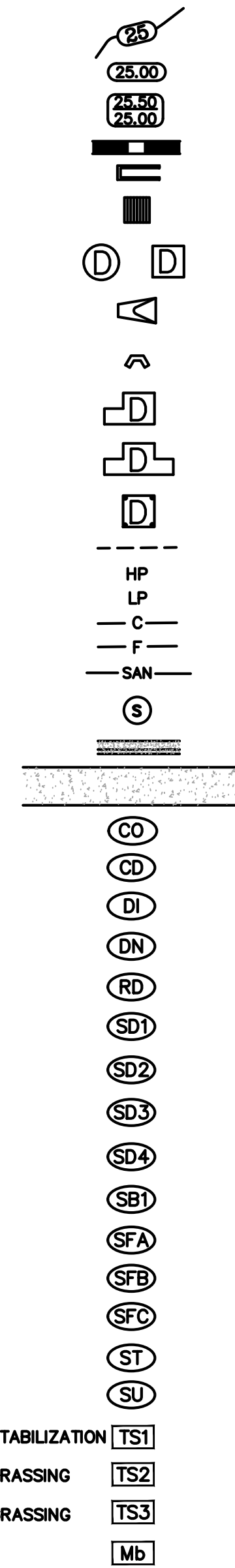
EXISTING

- IRON ROD
- PK NAIL
- R.R. SPIKE
- CONC. MONUMENT
- WATER VALVE
- WATER METER
- FIRE HYDRANT
- GAS METER
- GAS VALVE
- CLEAN-OUT
- GUARD POST (BOLLARD)
- SIGN POST
- BENCHMARK
- STORM SEWER MANHOLE
- SANITARY SEWER MANHOLE
- TELEPHONE MANHOLE
- ELECTRIC MANHOLE
- TELEPHONE BOX
- ELECTRIC BOX
- CABLE BOX
- UTILITY POLE
- GUY WIRE
- LIGHT POLE
- POST OR POLE (TYPE AS NOTED)
- MAILBOX
- DECIDUOUS TREE
- EVERGREEN/CONIFEROUS TREE
- BUSH
- PROPERTY LINE
- SETBACK LINE
- EASEMENT LINE
- CURB
- FENCE
- OVERHEAD ELECTRIC
- OVERHEAD TELEPHONE
- OVERHEAD CABLE
- UNDERGROUND TELEPHONE
- UNDERGROUND ELECTRIC
- UNDERGROUND CABLE
- WATER LINE
- SEWER LINE
- GAS LINE
- STORM SEWER/CULVERT
- EDGE OF WOODS
- CONTOUR LINE



PROPOSED

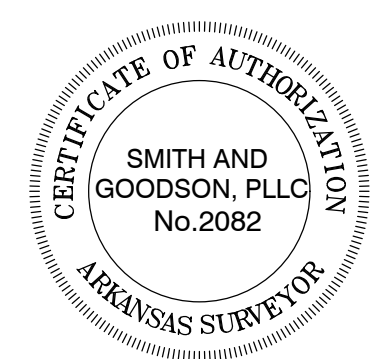
- PROPOSED CONTOUR
- PROPOSED SPOT ELEVATION
- PROPOSED SPOT CURB ELEVATION
- STORM SEWER - PIPE
- STORM SEWER - MITERED END SECTION
- STORM SEWER - GRATE INLET
- STORM SEWER - JUNCTION BOX
- STORM SEWER - FLARED END SECTION
- STORM SEWER - HEADWALL
- STORM SEWER - SINGLE WING
- STORM SEWER - DOUBLE WING
- STORM SEWER - AREA INLET
- GRADE BREAK LINE
- HIGH POINT
- LOW POINT
- CUT LINE
- FILL LINE
- SANITARY SEWER PIPE
- SANITARY SEWER MANHOLE
- PROPOSED CURB
- PROPOSED CONCRETE
- CONSTRUCTION - ENTRANCE/EXIT
- CHECK DAM
- DIVERSION BERM
- DOWNDRAIN STRUCTURE - TEMPORARY
- ROCK DAM
- SEDIMENT BARRIER - SILT FENCE
- SEDIMENT BARRIER - GRAVEL RING
- SEDIMENT BARRIER - BLOCK & GRAVEL
- SEDIMENT BARRIER - BLOCK
- TEMPORARY SEDIMENT BASIN
- SILT FENCE - TYPE A
- SILT FENCE - TYPE B
- SILT FENCE - TYPE C
- STORM DRAIN OUTLET PROTECTION
- SURFACE ROUGHENING
- DISTURBED AREA STABILIZATION - TEMPORARY STABILIZATION
- DISTURBED AREA STABILIZATION - TEMPORARY GRASSING
- DISTURBED AREA STABILIZATION - PERMANENT GRASSING
- MATting/BLANKETS



REVISIONS	DATE

CITY OF LITTLE ROCK, ARKANSAS
WEST 19th STREET RECONSTRUCTION
LEGEND / GENERAL NOTES
100% PLANS

DEPARTMENT OF PUBLIC WORKS
CIVIL ENGINEERING
701 W. MARKHAM
LITTLE ROCK, ARKANSAS 72201

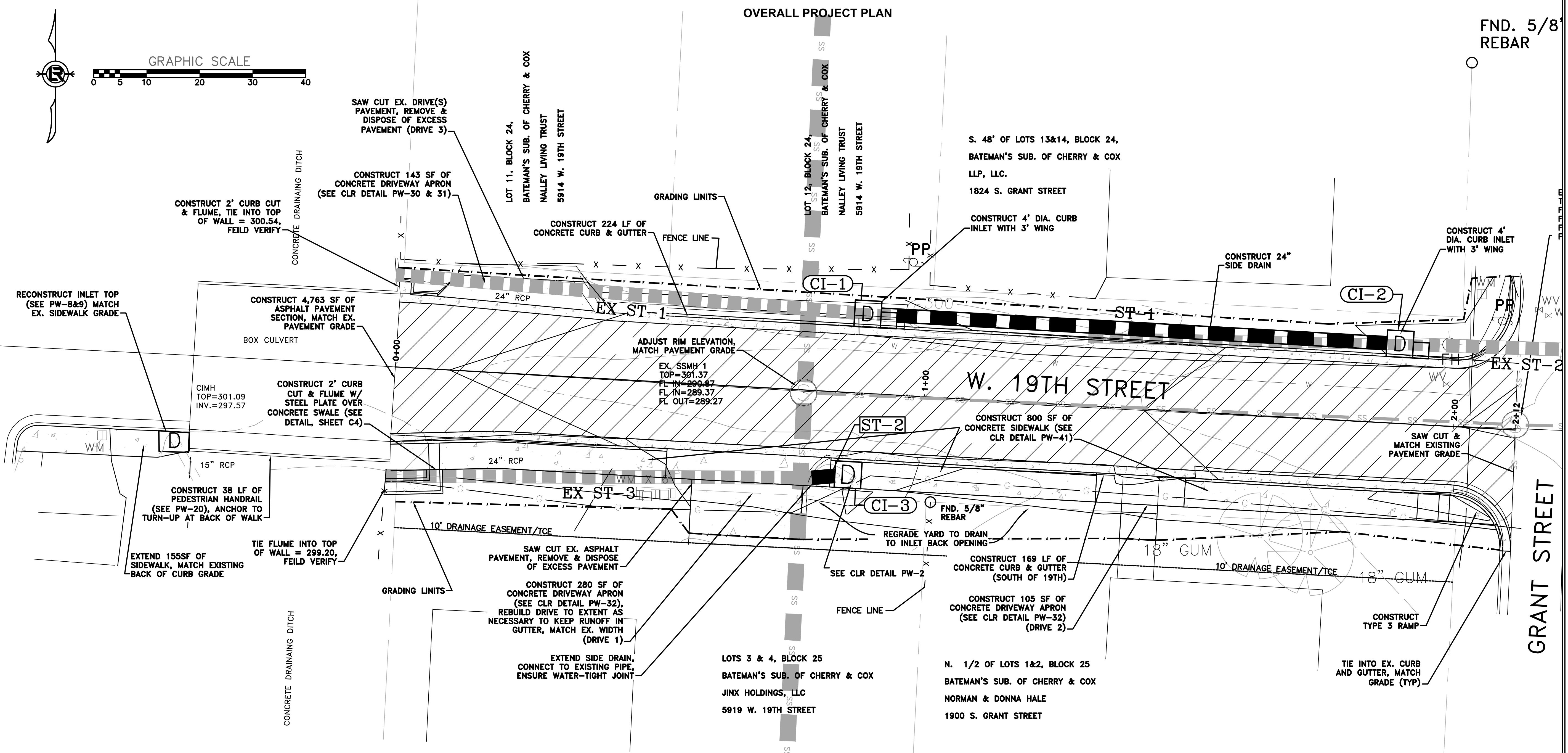


DRAWN BY	J. GRIFFIN
DESIGNED	J. GRIFFIN
CHECKED	A. SMITH
DATE	10/01/2019
SCALE	NTS
PROJECT NO.	CLR # 01-17-ST-57
SHEET NO.	C2

REVISIONS	DATE

OVERALL PROJECT PLAN

FND. 5/8" REBAR

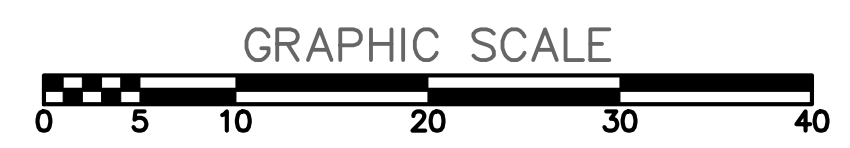
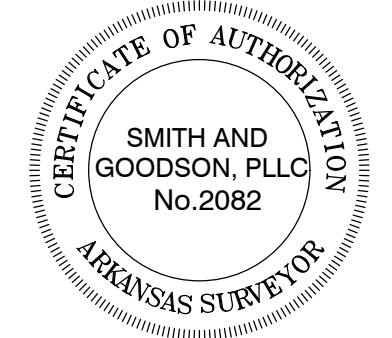
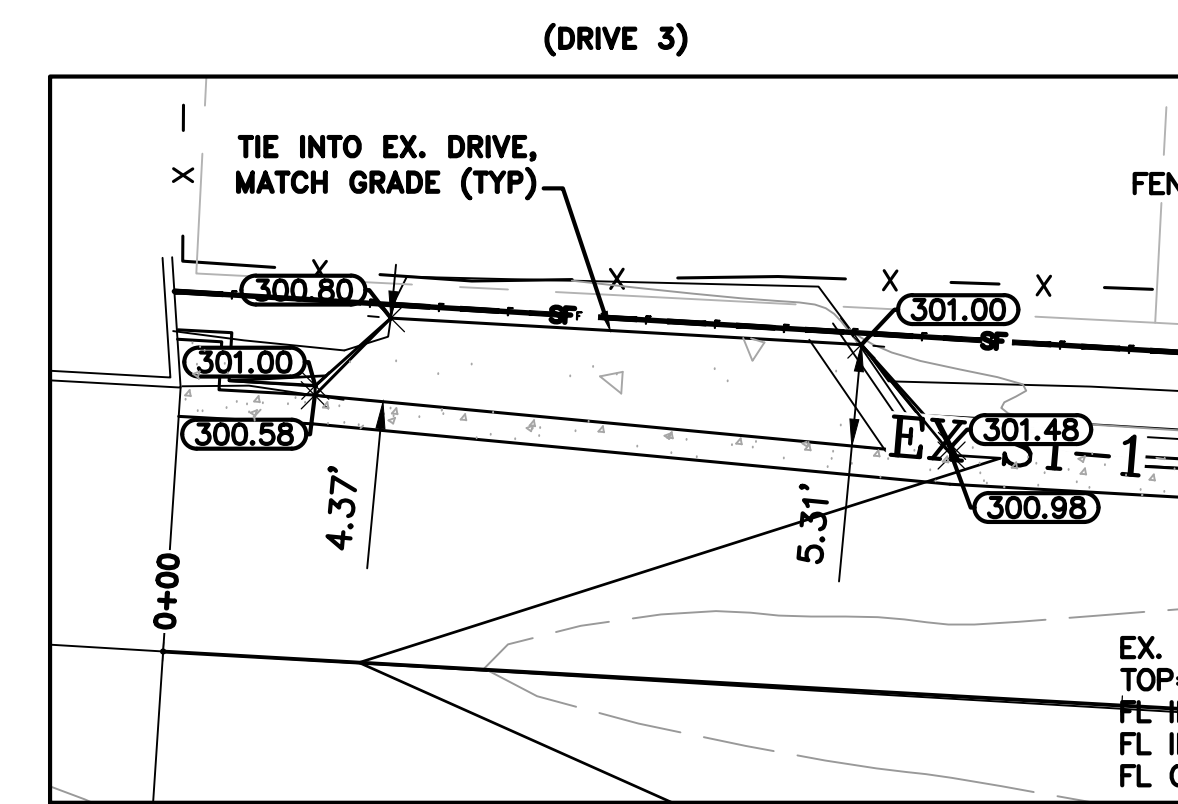
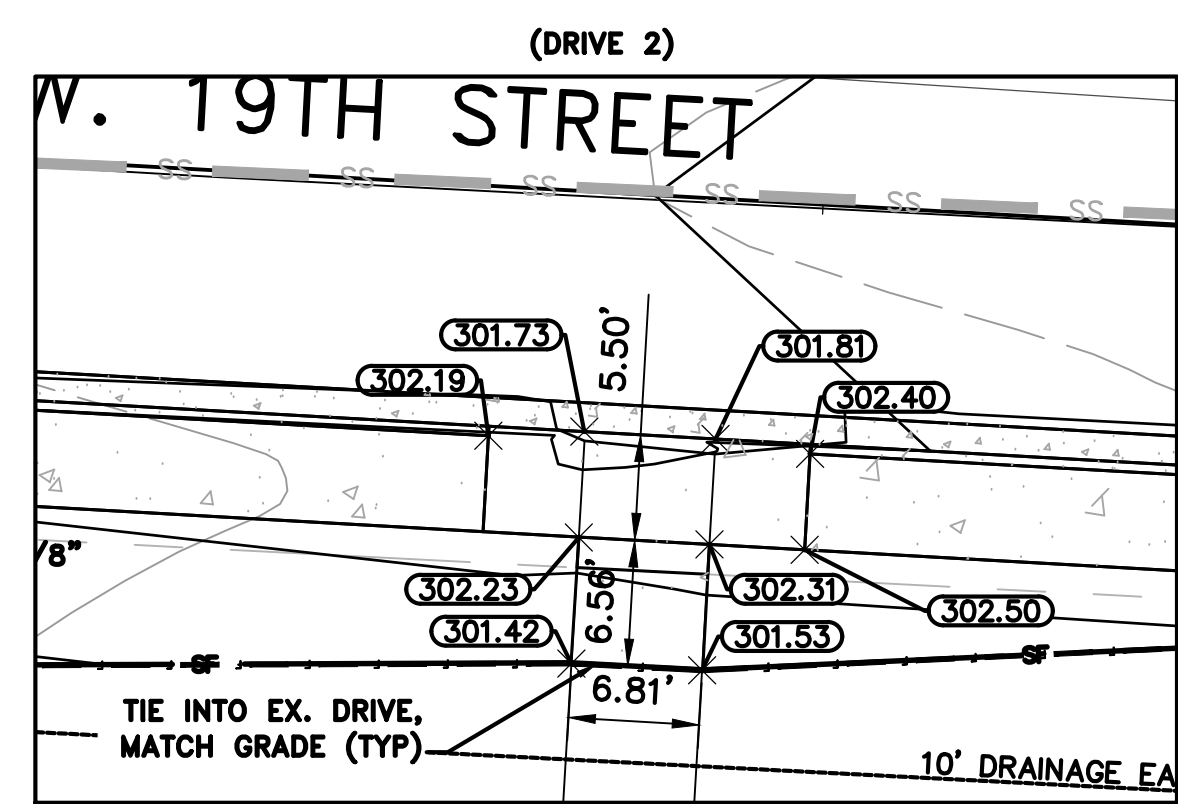
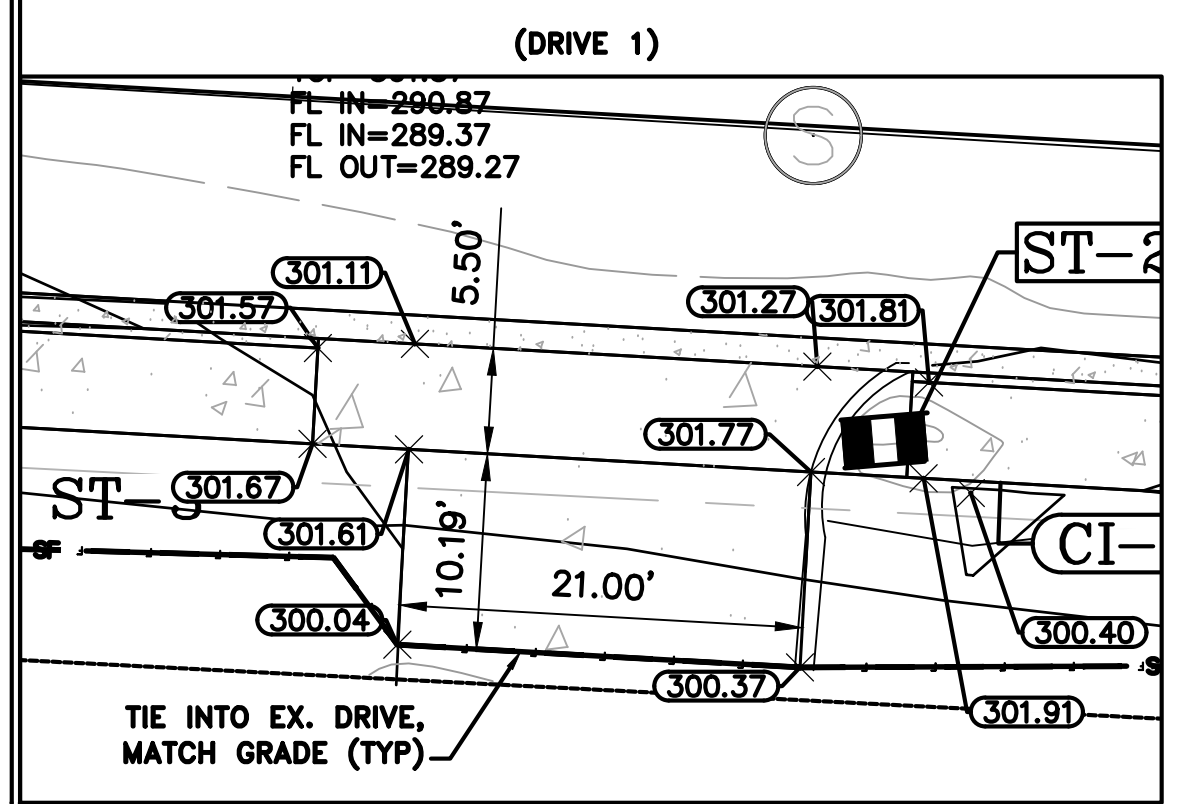


CITY OF LITTLE ROCK, ARKANSAS
 WEST 19th STREET RECONSTRUCTION
 OVERALL PROJECT PLAN
 100% PLANS

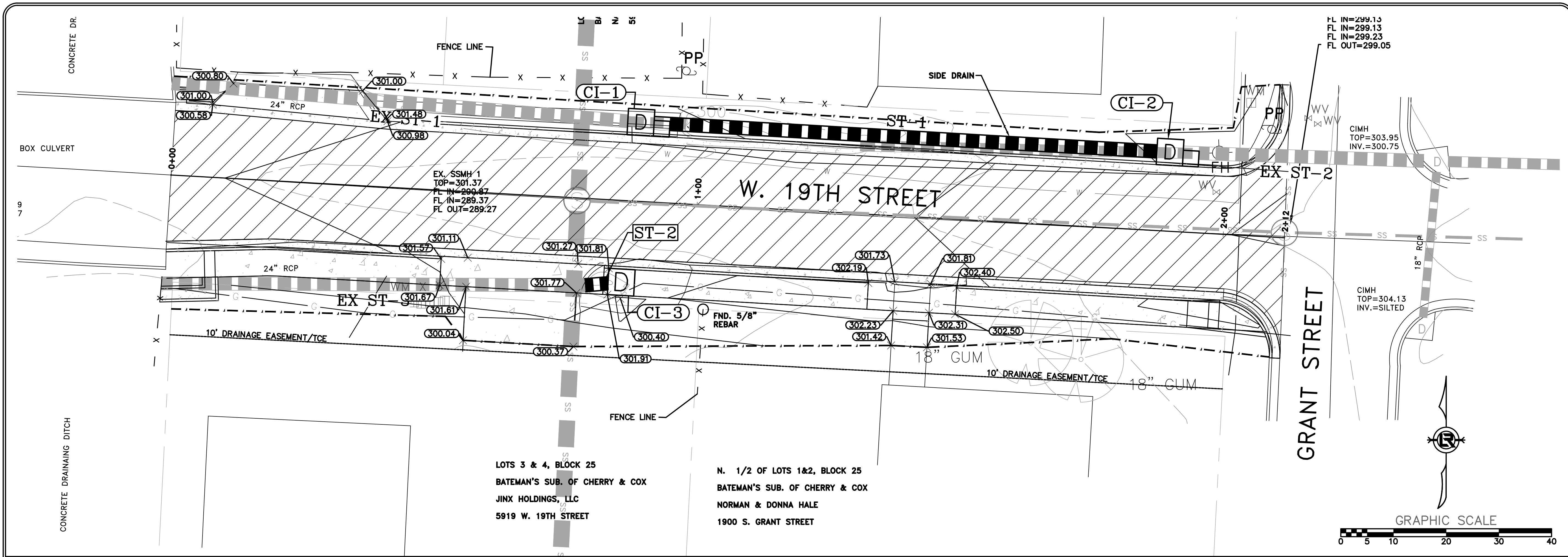
DEPARTMENT OF PUBLIC WORKS
 CIVIL ENGINEERING
 701 W. MARKHAM
 LITTLE ROCK, ARKANSAS 72201



DRIVE GRADE DETAILS

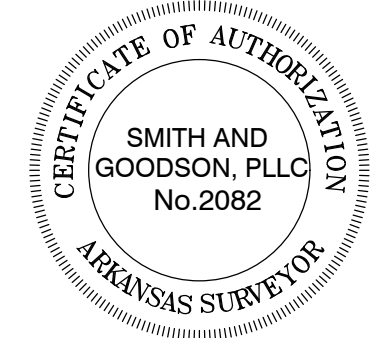
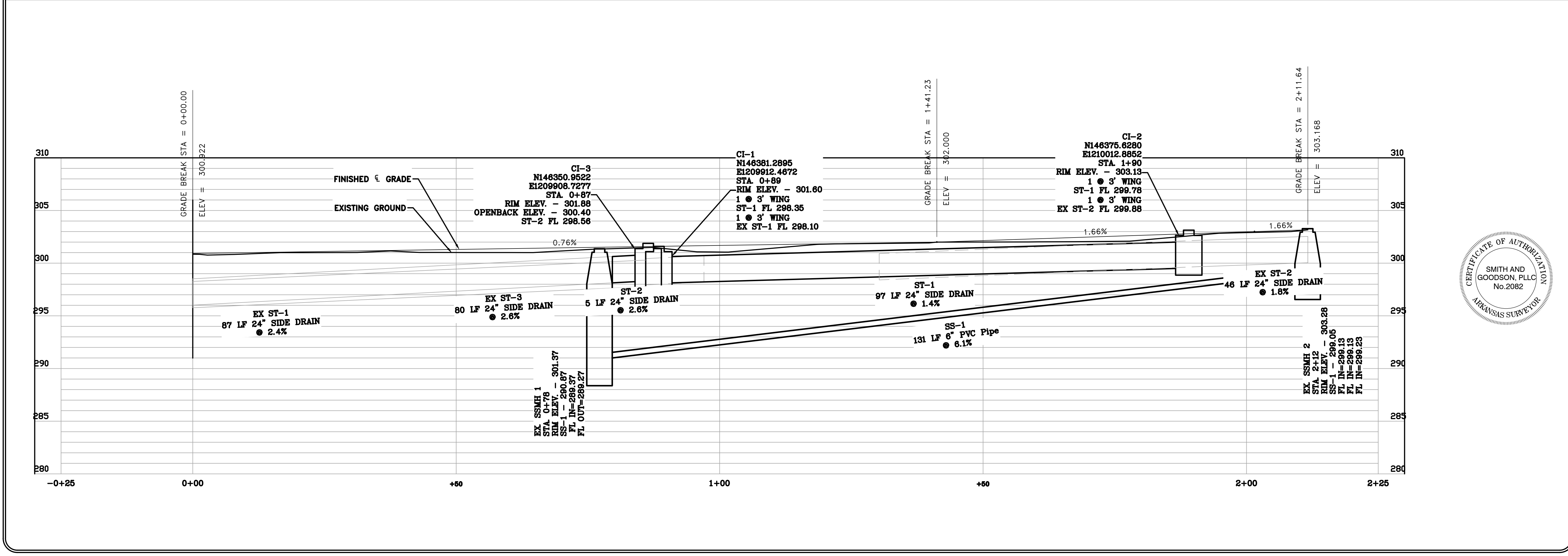
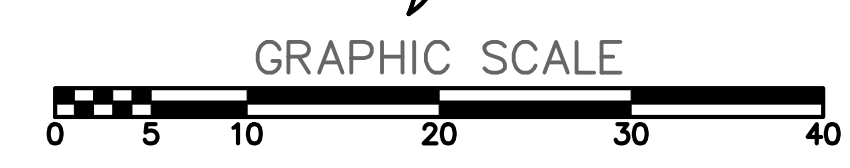


DRAWN BY
 J. GRIFFIN
 DESIGNED
 J. GRIFFIN
 CHECKED
 A. SMITH
 DATE
 10/01/2019
 SCALE
 NTS
 PROJECT NO.
 CLR # 01-17-ST-57
 SHEET NO.
C3



REVISIONS	DATE

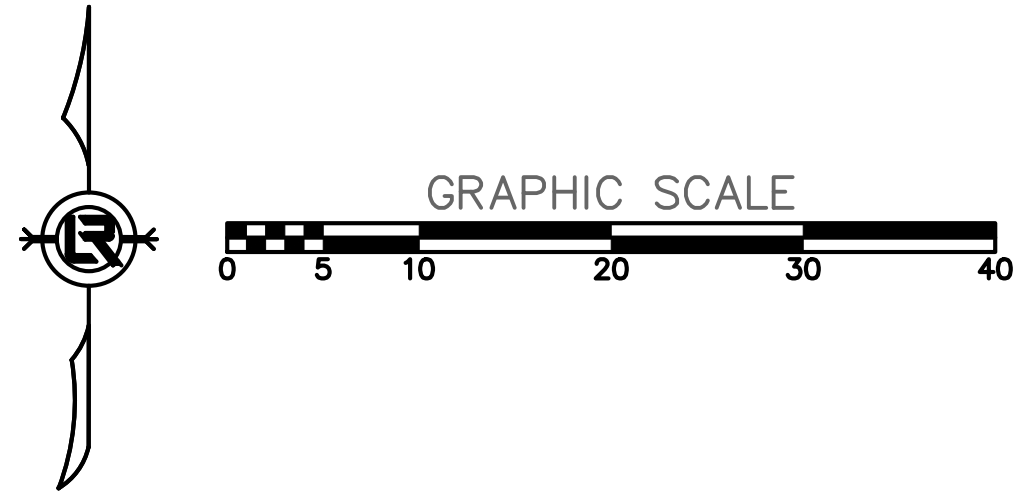
CITY OF LITTLE ROCK, ARKANSAS
WEST 19th STREET RECONSTRUCTION
 19th STREET PLAN & PROFILE SHEET 1 OF 1
 100% PLANS



DEPARTMENT OF PUBLIC WORKS
 CIVIL ENGINEERING
 701 W. MARKHAM
 LITTLE ROCK, ARKANSAS 72201



DRAWN BY
 J. GRIFFIN
DESIGNED
 J. GRIFFIN
CHECKED
 A. SMITH
DATE
 10/01/2019
SCALE
 NTS
PROJECT NO.
 CLR # 01-17-ST-57
SHEET NO.
 C4



FND. 5/8" REBAR

LOT 11, BLOCK 24,
BATEMAN'S SUB. OF CHERRY & COX
NALLEY LIVING TRUST
5914 W. 19TH STREET

LOT 12, BLOCK 24,
BATEMAN'S SUB. OF CHERRY & COX
NALLEY LIVING TRUST
5914 W. 19TH STREET

S. 48' OF LOTS 13&14, BLOCK 24,
BATEMAN'S SUB. OF CHERRY & COX
LLP, LLC.
1824 S. GRANT STREET

LOTS 3 & 4, BLOCK 25
BATEMAN'S SUB. OF CHERRY & COX
JINX HOLDINGS, LLC
5919 W. 19TH STREET

N. 1/2 OF LOTS 1&2, BLOCK 25
BATEMAN'S SUB. OF CHERRY & COX
NORMAN & DONNA HALE
1900 S. GRANT STREET

TIE INTO EX. CURB
AND GUTTER, MATCH
GRADE (TYP)

CONCRETE DRAINING DITCH

BOX CULVERT

CIMH
TOP=301.09
INV.=297.57

15" RCP

CONCRETE DRAINING DITCH

0+00

10' DRAINAGE EASEMENT/TCE

3S

SS

SS

SS

SS

SS

SS

SS

SS

SS

SS

SS

SS

SS

SS

SS

SS

SS

SS

SS

SS

SS

SS

SS

SS

SS

SS

SS

SS

SS

SS

SS

SS

SS

SS

SS

SS

SS

SS

SS

SS

SS

SS

SS

SS

SS

SS

SS

SS

SS

SS

SS

SS

SS

SS

SS

SS

SS

SS

SS

SS

SS

SS

SS

SS

SS

SS

SS

X

X

X

X

X

X

X

X

X

X

X

X

X

X

X

X

X

X

X

X

X

X

X

X

X

X

X

X

X

X

X

X

X

X

X

X

X

X

X

FENCE LINE

24" RCP

EX ST-1

EX. SSMH 1
TOP=301.37
FL IN=289.37
FL OUT=289.27

1+00

W. 19TH STREET

ST-2

SD1 PHASE 2
SD4 PHASE 3

EX ST-3

24" RCP

CI-3

FND. 5/8" REBAR

18" GUM

10' DRAINAGE EASEMENT/TCE

18" GUM

CONSTRUCT 210 LF OF
SILT FENCE TYPE A

FENCE LINE

GRANT STREET



REVISIONS	DATE

CITY OF LITTLE ROCK, ARKANSAS
WEST 19th STREET RECONSTRUCTION
EROSION CONTROL PLAN
100% PLANS

DEPARTMENT OF PUBLIC WORKS
CIVIL ENGINEERING
701 W. MARKHAM
LITTLE ROCK, ARKANSAS 72201



DRAWN BY J. GRIFFIN
DESIGNED J. GRIFFIN
CHECKED A. SMITH
DATE 10/01/2019
SCALE NTS
PROJECT NO. CLR # 01-17-ST-57
SHEET NO. C5