

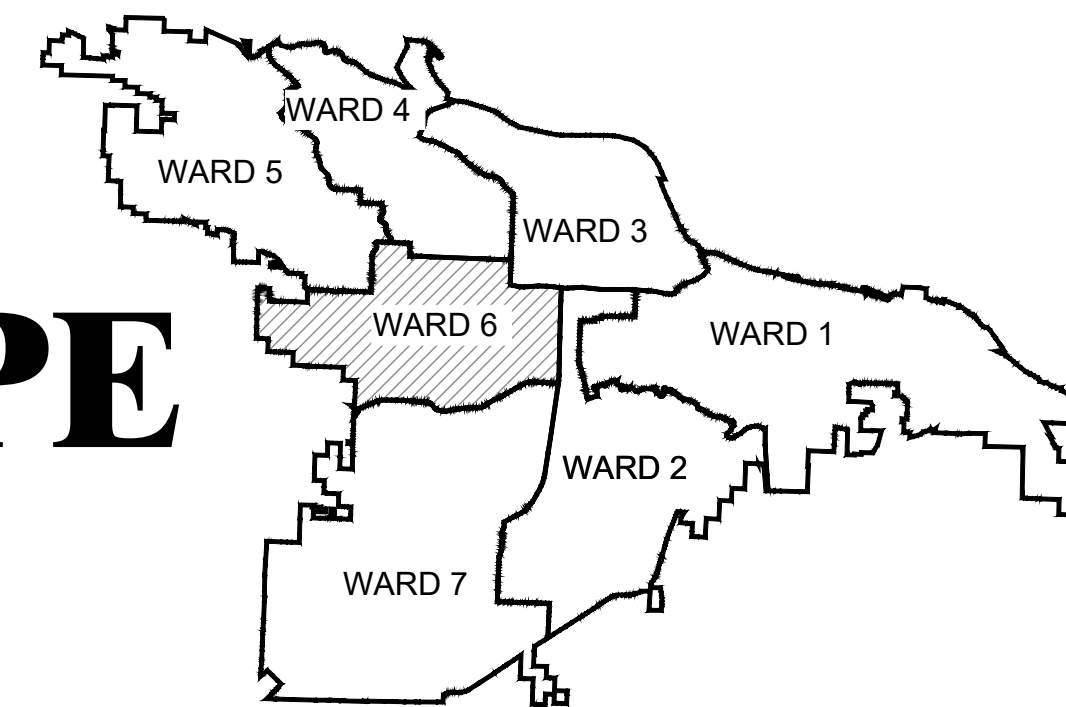
REVISIONS	DATE

06-17-ST-267

JOHN BARROW RD STREETSCAPE

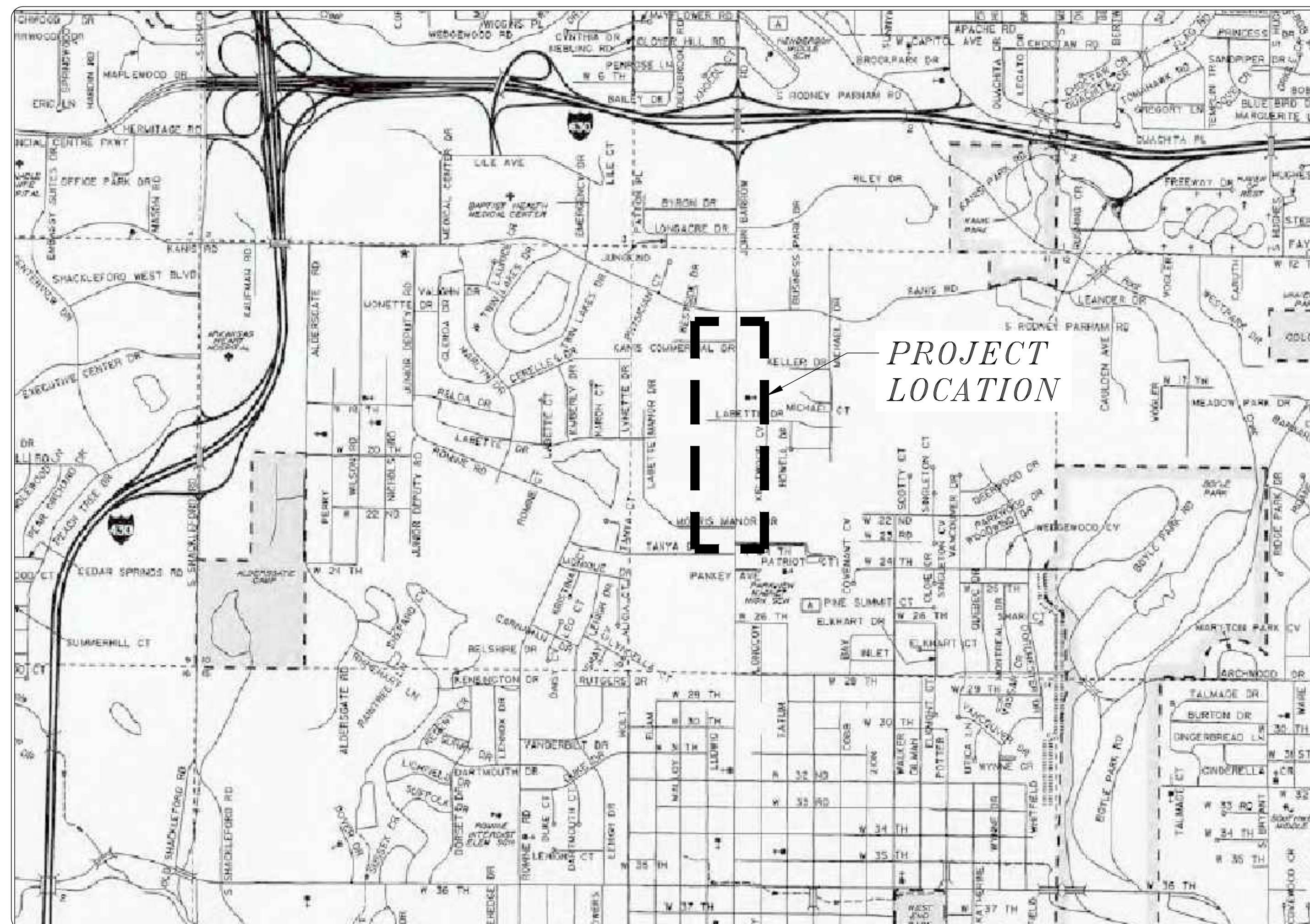
(JOHN BARROW RD/KANIS RD INTERSECTION
& JOHN BARROW RD - CALS LIBRARY SIDEWALK)

15% SUBMITTAL



PROJECT LOCATION - WARD 6

JOHN BARROW STREETSCAPE	
Sheet Number	Sheet Title
C0.1	COVER SHEET
C1.1	GN LEGEND AND QUANTITIES SHEET
C3.1	SITE PLAN - JOHN BARROW RD & KANIS RD INTERSECTION
C3.2	SITE PLAN - CALS LIBRARY SIDEWALK



2019-2021
BOND PROGRAM

DEPARTMENT OF PUBLIC WORKS
CIVIL ENGINEERING
701 WEST MARKHAM STREET
LITTLE ROCK, ARKANSAS 72201



Know what's below.
Call before you dig.



10800 Financial Centre Pkwy, Suite 500
Little Rock, Arkansas 72211
Main (501) 801-2679

CITY OF LITTLE ROCK, ARKANSAS
JOHN BARROW RD STREETSCAPE

COVER SHEET

DEPARTMENT OF PUBLIC WORKS
CIVIL ENGINEERING
701 W. MARKHAM
LITTLE ROCK, ARKANSAS 72201

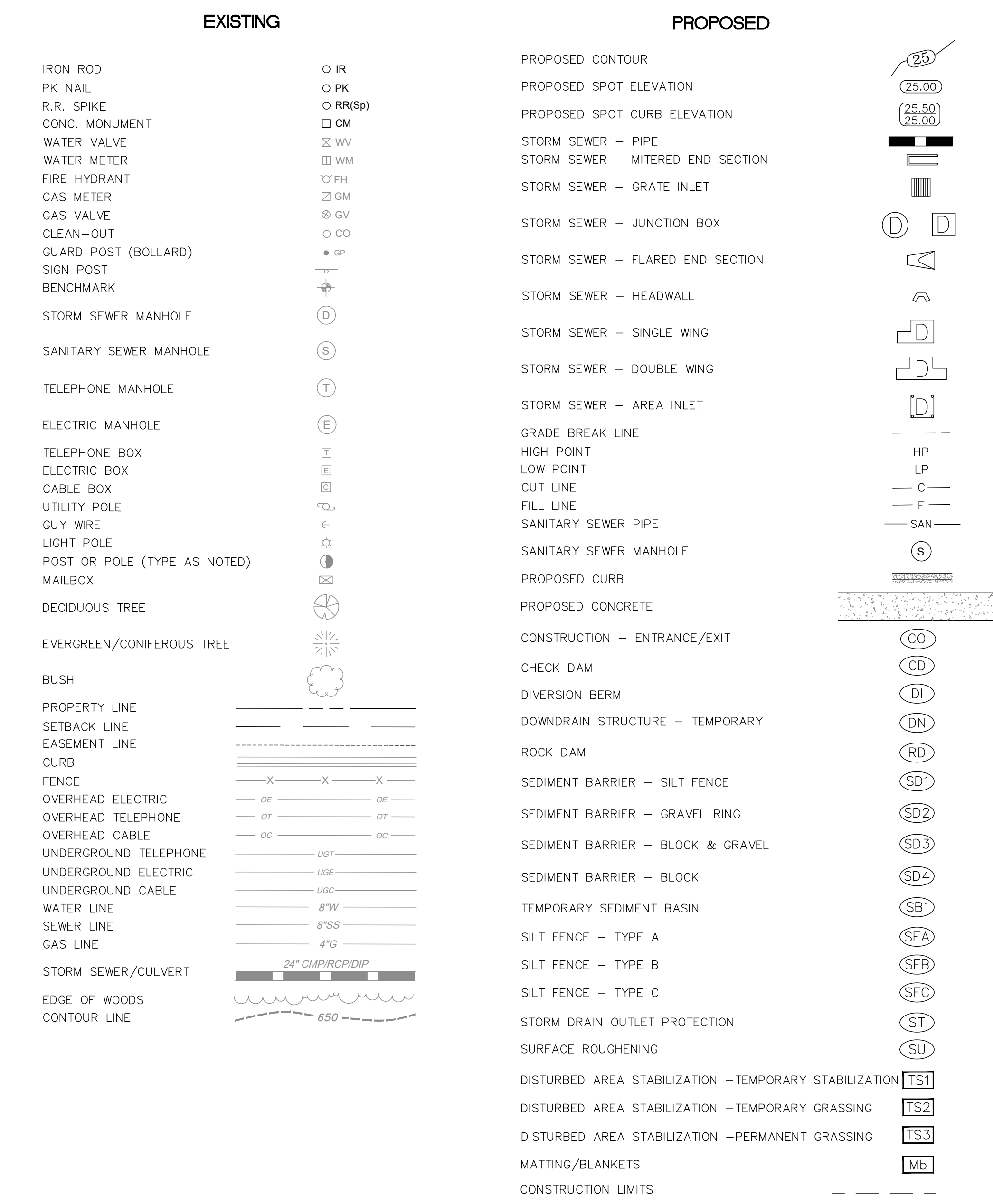


15% SUBMITTAL
REVIEW ONLY

DRAWN BY
LCJ
DESIGNED
SBH
CHECKED
SBH
DATE
07-15-19
SCALE
NO SCALE
PROJECT NO.
06-17-ST-267
SHEET NO.
C0.1

06-17-ST-267			
JOHN BARROW RD AND KANIS RD INTERSECTION - MATERIAL QUANTITIES			
15-Jul-19			
ITEM #	DESCRIPTION	UNIT	QTY
2.01	SITE PREPARATION	LS	1
3.40	TOPSOIL	CY	30
4.01	AGGREGATE BASE COURSE (CLASS 7)	TON	100
7.06	CONCRETE DRIVEWAY (6" THICK), STANDARD FINISH	SF	345
8.03	CONCRETE CURB AND GUTTER (CLASS 3)	LF	421
9.04	CONCRETE SIDEWALK (4" THICK)	SF	1790
14.01	SOLID SODDING- BERMUDA	SY	170
16.01	MAINTENANCE OF TRAFFIC	LS	1
18.50	ACCESS RAMP W TRUNCATED DOMES	SF	172
604.01	HYDROBLASTING FOR PAVEMENT MARKING REMOVAL	SF	256
706.00	RELOCATION OF TRAFFIC SIGNAL HEAD	EA	3
707.00	COUNTDOWN PED SIG HEAD, LED	EA	5
708.00	TRAFFIC SIGNAL CABLE (5C / 14A W.G.)	LF	400
711.00	CONCRETE PULL BOX (TYPE 2 HD)	EA	4
715.00	TRAFFIC SIGNAL PED. POLE W/ FND	EA	4
711.01	TYPE 2 PULL BOX	EA	4
719.24W	THERMOPLASTIC PAVEMENT MARKING WHITE (12")	LF	157
SP	STAMPED AND INTEGRAL COLORED CONCRETE	SF	2235
SP	INTEGRAL COLORED CONCRETE	SF	800
SP	CONCRETE BAND- CROSSWALKS	SF	575
SP	NEIGHBORHOOD SIGN	LS	0
SP	TREES- 2" CAL.	EA	0
SP	SITE FURNISHINGS- Benches w/dividers	EA	0
SP	SITE FURNISHINGS- Bike Racks	EA	0
SP	LIGHTING	EA	15
SP	ELECTRICAL	LS	1
SP	BUS SHELTER	LS	0
19.01	FINAL CLEANUP (AS DIRECTED BY ENGINEER)	LS	1
	UTILITY RELOCATION	BY OTHERS	

06-17-ST-267			
JOHN BARROW RD CALS SIDEWALK - MATERIAL QUANTITIES			
15-Jul-19			
ITEM #	DESCRIPTION	UNIT	QTY
2.01	SITE PREPARATION	LS	1
3.40	TOPSOIL	CY	100
9.04	CONCRETE SIDEWALK (4" THICK)	SF	1850
14.01	SOLID SODDING- BERMUDA	SY	600
16.01	MAINTENANCE OF TRAFFIC	LS	1
18.50	ACCESS RAMP W TRUNCATED DOMES	SF	
24.06	SILT FENCE -TYPE A (SFA)	LF	370
SP	TREES- 2" CAL.	EA	0
SP	SITE FURNISHINGS- Benches w/dividers	EA	0
SP	SITE FURNISHINGS- Bike Racks	EA	0
SP	LIGHTING	EA	7
SP	ELECTRICAL	LS	1
SP	BUS SHELTER	LS	1
19.01	FINAL CLEANUP (AS DIRECTED BY ENGINEER)	LS	
	UTILITY RELOCATION	BY OTHERS	



REVISIONS	DATE

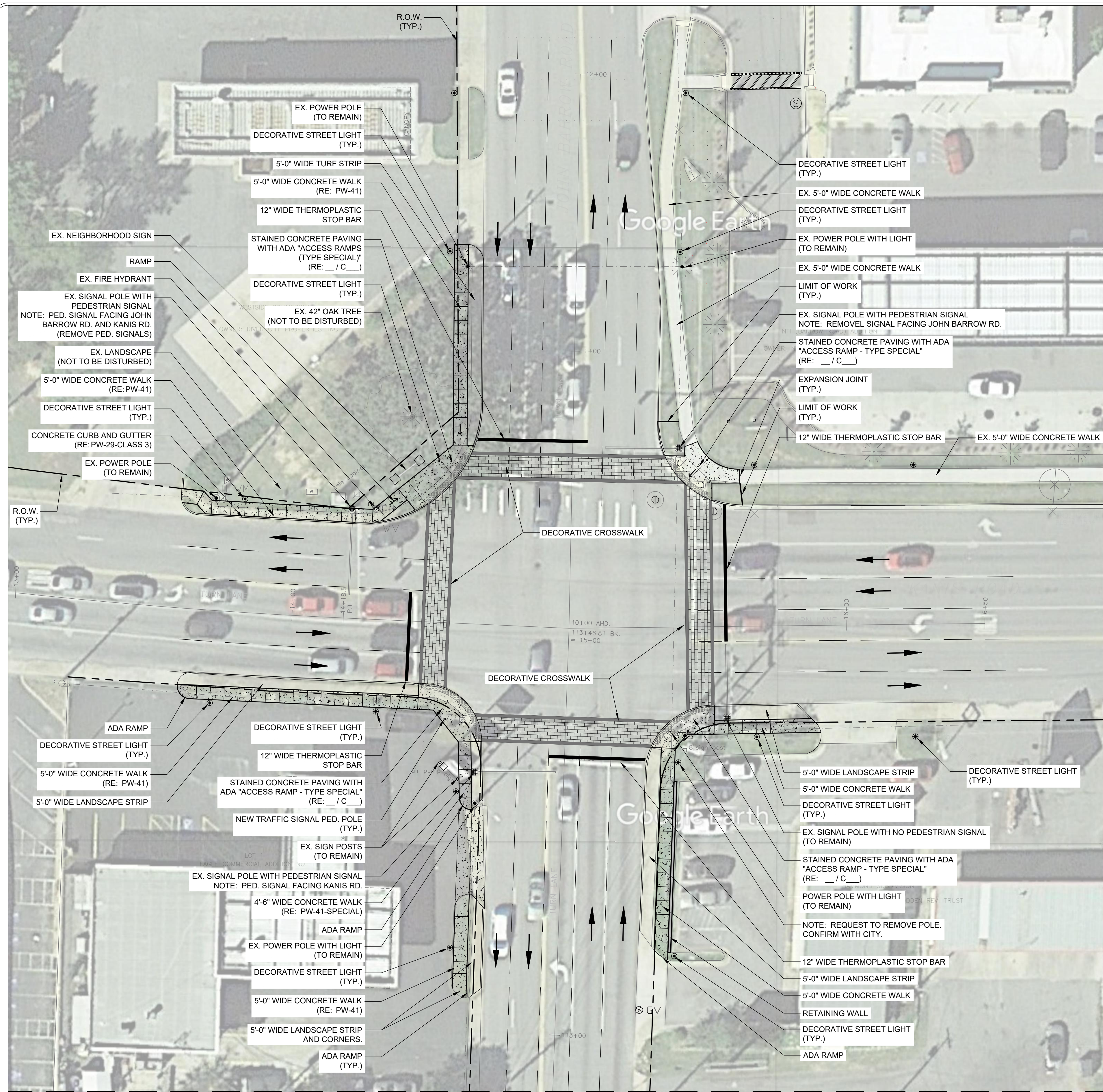
CITY OF LITTLE ROCK, ARKANSAS
JOHN BARROW RD STREETScape
 GENERAL NOTES, LEGEND AND QUANTITIES

DEPARTMENT OF PUBLIC WORKS
 CIVIL ENGINEERING
 701 W. MARKHAM
 LITTLE ROCK, ARKANSAS 72201

15% SUBMITTAL
 REVIEW ONLY

DRAWN BY
 LCJ
 DESIGNED
 SBH
 CHECKED
 SBH
 DATE
 07-15-19
 SCALE
 NO SCALE
 PROJECT NO.
 06-17-ST-267
 SHEET NO.
C1.1






MATCHLINE - SEE SHEET C3.2

JOHN BARROW RD & KANIS RD INTERSECTION SITE PLAN

REVISIONS	DATE

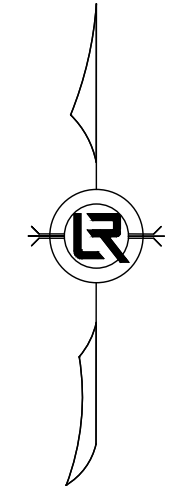
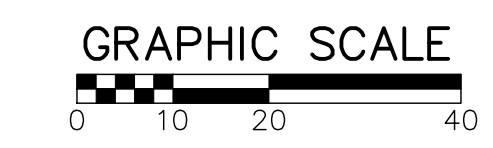
CITY OF LITTLE ROCK, ARKANSAS
 JOHN BARROW RD STREETSCAPE
 SITE PLAN - JOHN BARROW RD & KANIS RD INTERSECTION

DEPARTMENT OF PUBLIC WORKS
 CIVIL ENGINEERING
 701 W. MARKHAM
 LITTLE ROCK, ARKANSAS 72201



15% SUBMITTAL
 REVIEW ONLY

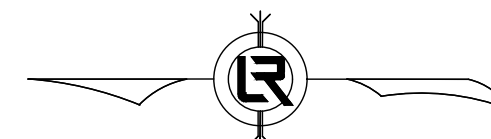
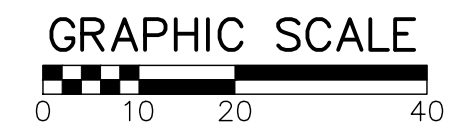
DRAWN BY
 LCJ
 DESIGNED
 SBH
 CHECKED
 SBH
 DATE
 07-15-19
 SCALE
 1" = 40'-0"
 PROJECT NO.
 06-17-ST-267
 SHEET NO.
C3.1



MATCHLINE - SEE SHEET C3.1



JOHN BARROW RD - CALS LIBRARY SIDEWALK SITE PLAN



REVISIONS	DATE

CITY OF LITTLE ROCK, ARKANSAS
 JOHN BARROW RD STREETScape
 CALS LIBRARY SIDEWALK SITE PLAN

DEPARTMENT OF PUBLIC WORKS
 CIVIL ENGINEERING
 701 W. MARKHAM
 LITTLE ROCK, ARKANSAS 72201

15% SUBMITTAL
 REVIEW ONLY

DRAWN BY
 LCJ
 DESIGNED
 SBH
 CHECKED
 SBH
 DATE
 07-15-19
 SCALE
 1" = 40'-0"
 PROJECT NO.
 06-17-ST-267
 SHEET NO.
C3.2