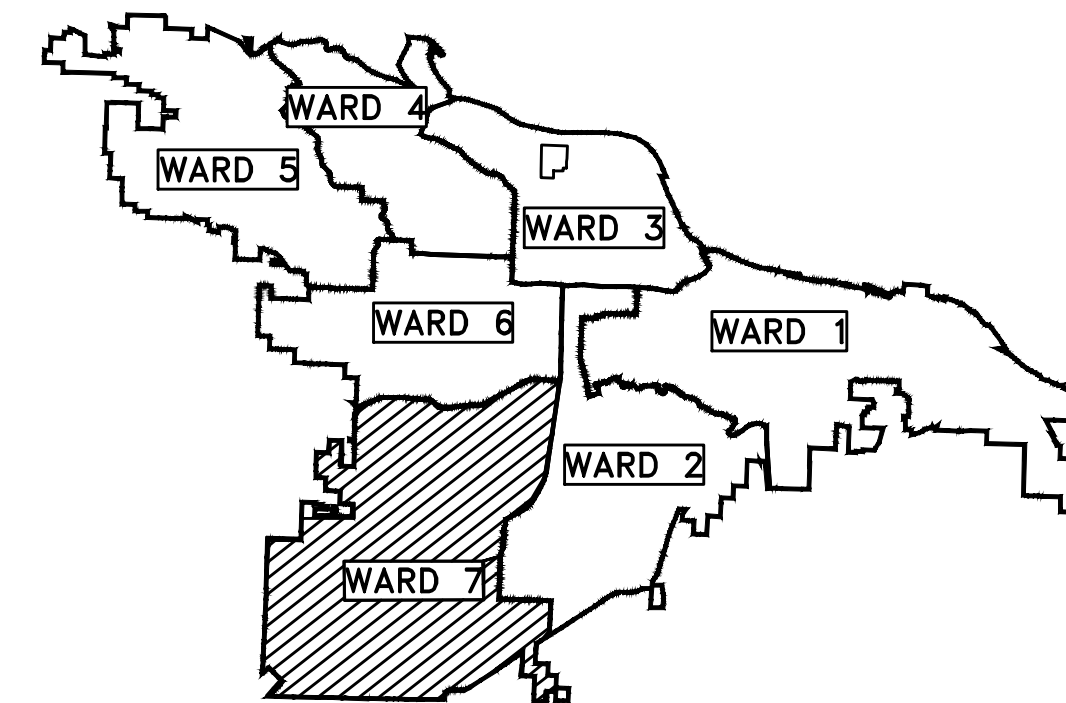
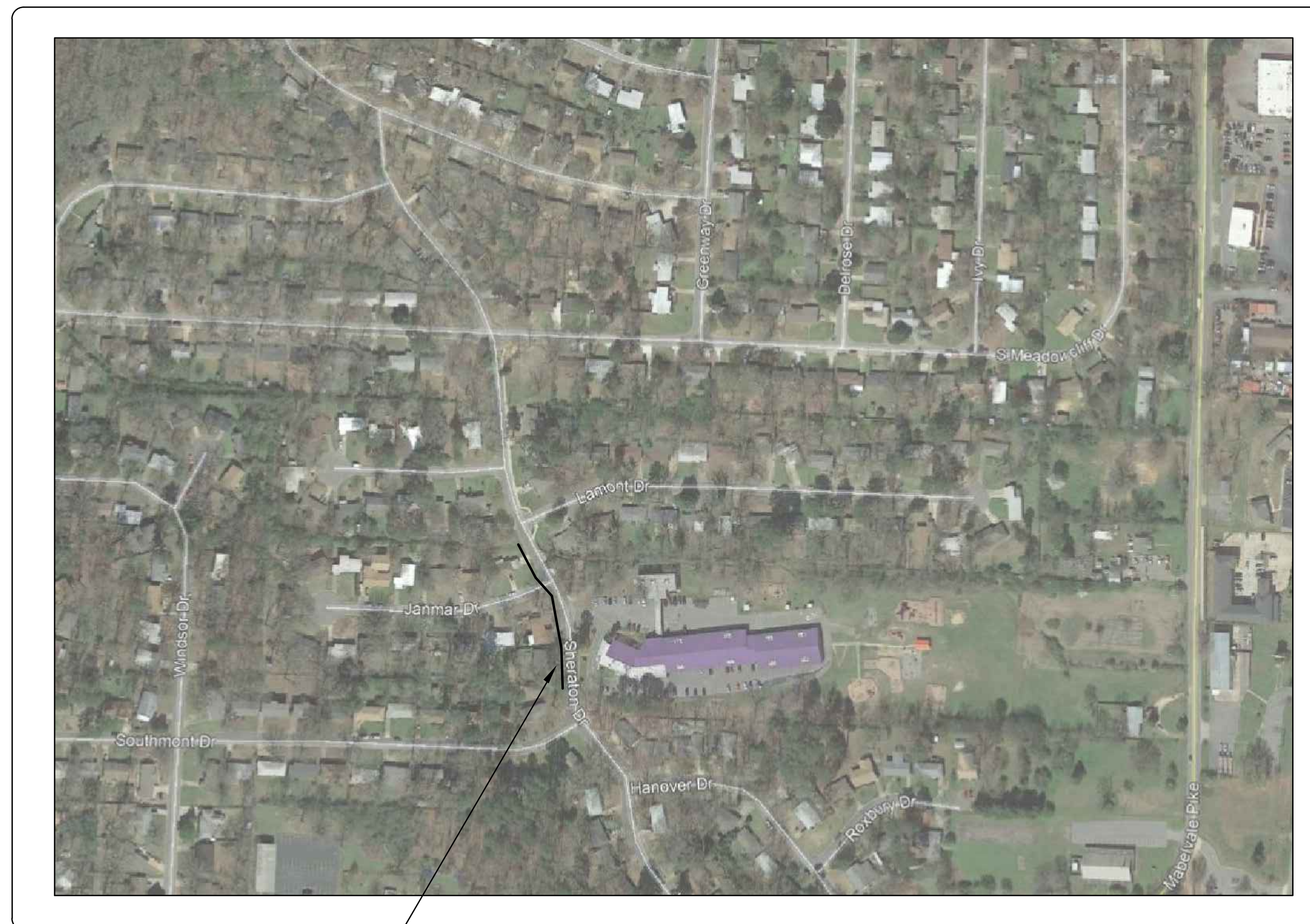


CLR PROJECT 07-15-DR-275 JANMAR DRIVE DRAINAGE IMPROVEMENTS LITTLE ROCK, ARKANSAS

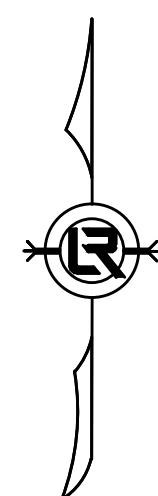


PROJECT LOCATION - WARD 7

SHEET NO.	TITLE
C1	COVER SHEET
C2	GENERAL NOTES, LEGEND AND QUANTITIES
C3	PLAN AND PROFILE
C4	DRIVEWAY GRADES
C5	EROSION CONTROL
C6	MISC. DETAILS



PROJECT LOCATION



**2019-2021
BOND PROGRAM**

DEPARTMENT OF PUBLIC WORKS
CIVIL ENGINEERING
701 WEST MARKHAM STREET
LITTLE ROCK, ARKANSAS 72201



REVISIONS	DATE

CITY OF LITTLE ROCK, ARKANSAS
JANMAR DRIVE DRAINAGE IMPROVEMENTS

COVER SHEET

DEPARTMENT OF PUBLIC WORKS
CIVIL ENGINEERING
701 W. MARKHAM
LITTLE ROCK, ARKANSAS 72201

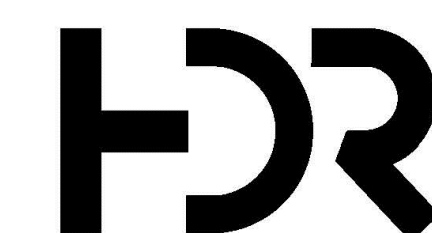


SEAL

DRAWN BY LL
DESIGNED JRH
CHECKED JRH
DATE 04/05/19
SCALE NTS

PROJECT NO.
07-15-DR-275

SHEET NO.
C1



320 Executive Court
Suite 304
Little Rock, AR 72205
501.907.7153

REVISIONS	DATE

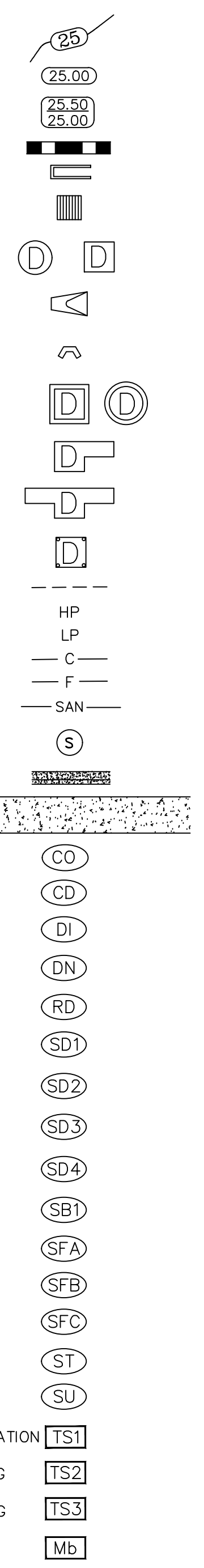
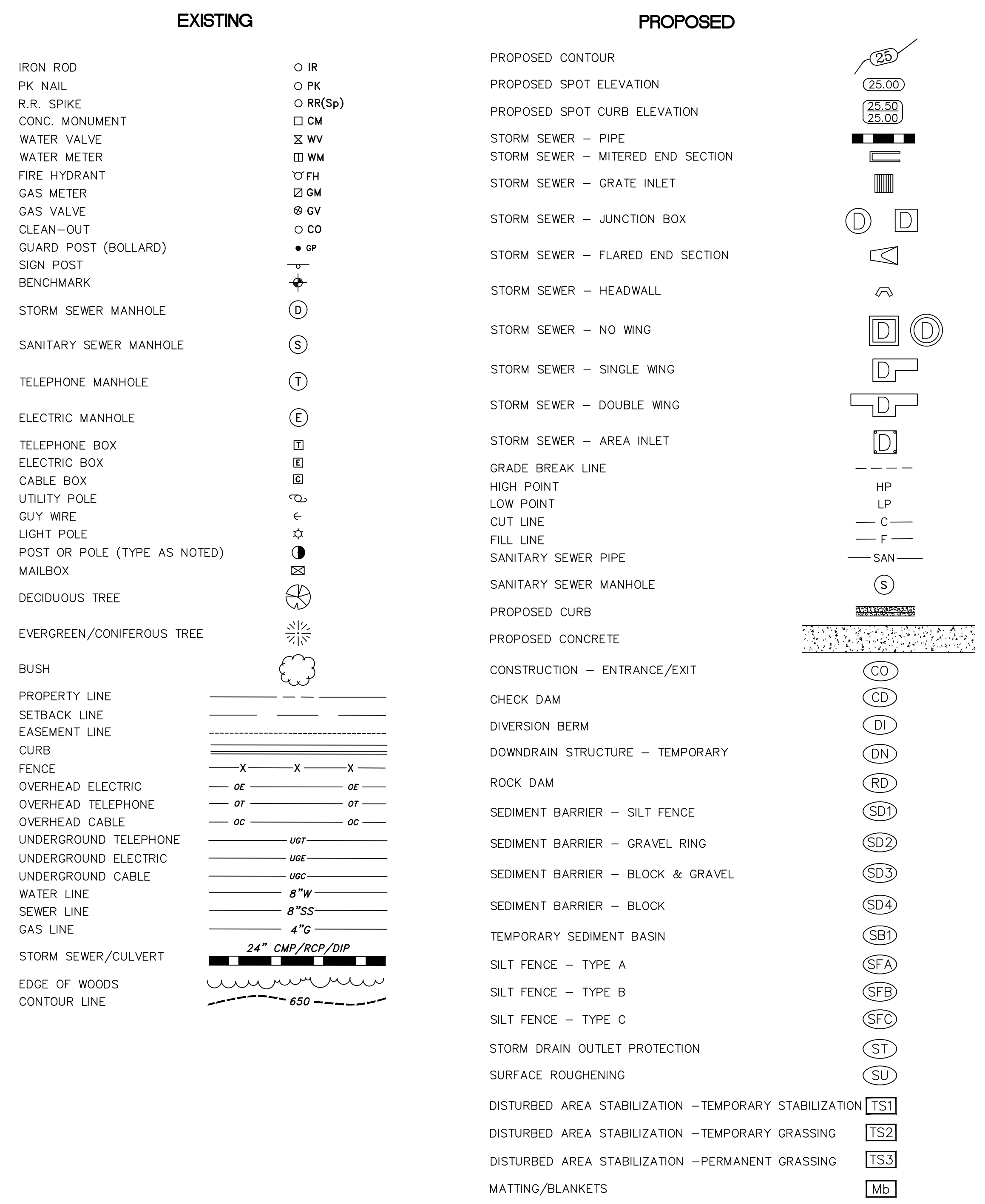
CITY OF LITTLE ROCK, ARKANSAS
JANMAR DRIVE DRAINAGE IMPROVEMENTS
GENERAL NOTES, LEGEND AND QUANTITIES

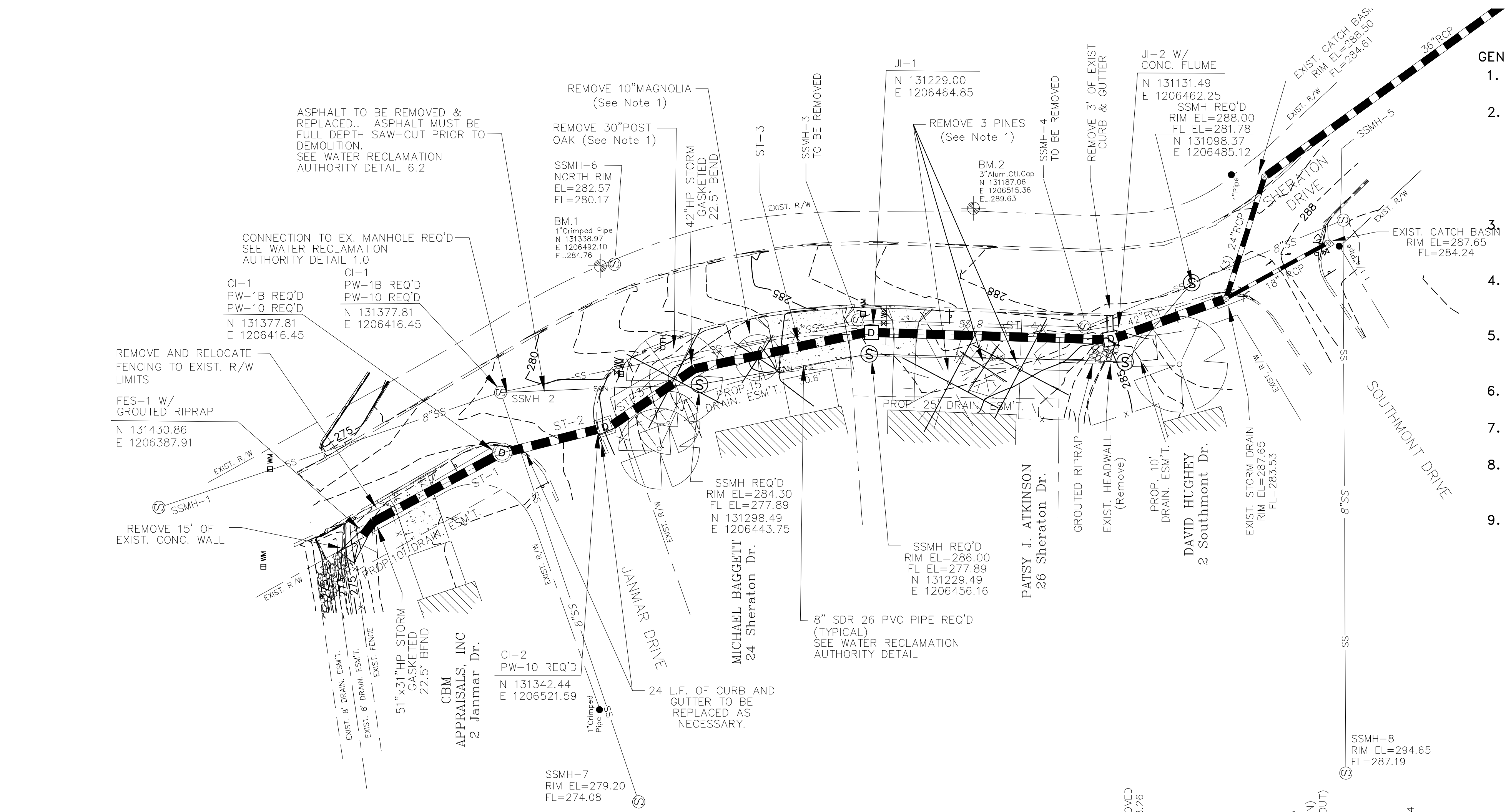
DEPARTMENT OF PUBLIC WORKS
 CIVIL ENGINEERING
 701 W. MARKHAM
 LITTLE ROCK, ARKANSAS 72201

DRAWN BY
 LL
DESIGNED
 JRH
CHECKED
 JRH
DATE
 04/05/19
SCALE
 NTS
PROJECT NO.
 07-15-DR-275
SHEET NO.
 C2

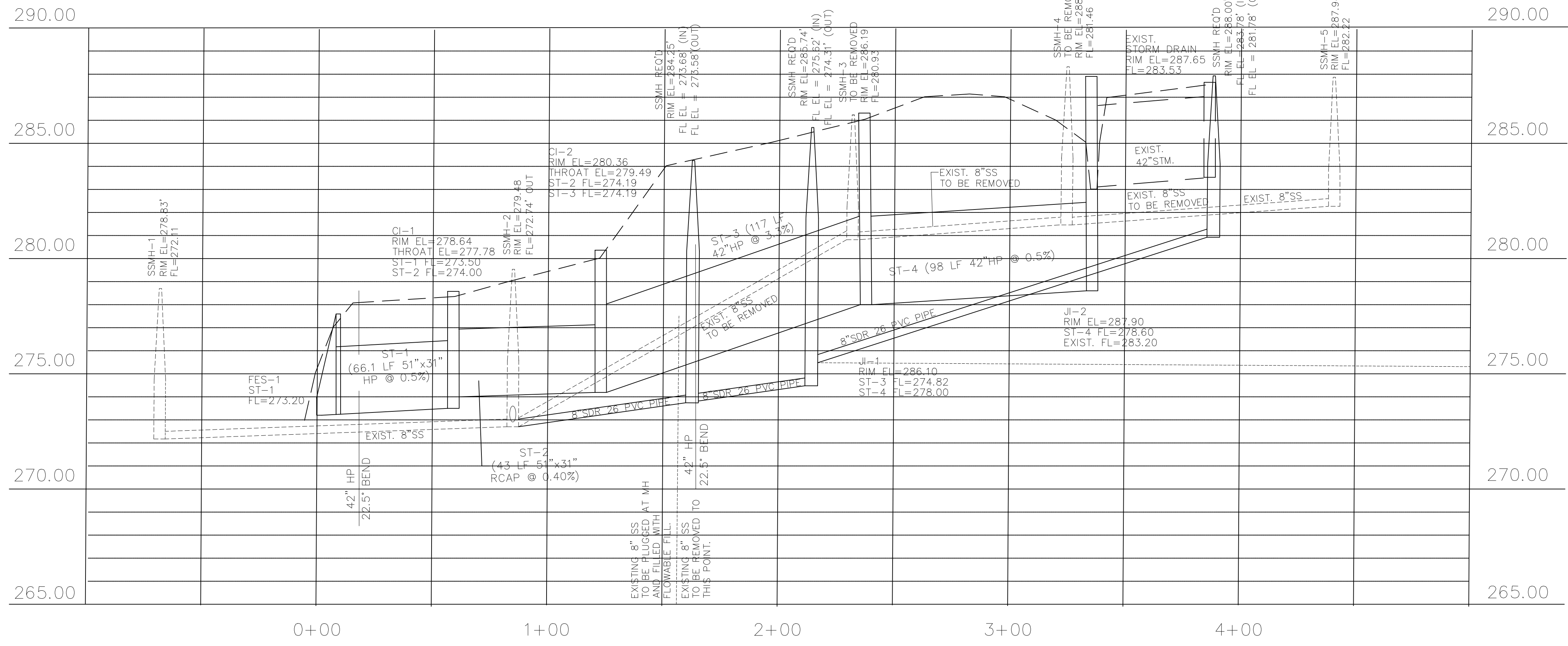
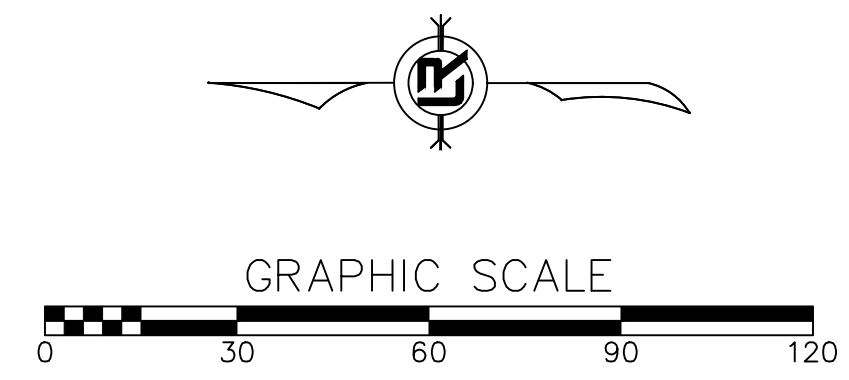
PRICING OF ESTIMATED QUANTITIES			
CLR PROJECT 07-15-DR-275			
JANMAR DRIVE DRAINAGE IMPROVEMENTS			
1-Oct-19			
ITEM #	ITEM DESCRIPTION	UNIT	QUANTITY
2.01	SITE PREPERATION	LS	1
3.01	UNCLASSIFIED EXCAVATION	CY	35
7.06	CONCRETE DRIVEWAY (6" THICK), STANDARD FINISH	SF	1450
8.03	CONCRETE CURB AND GUTTER (CLASS 3)	LF	24
9.03	CONCRETE FLUME - SPECIAL	SF	20
10.01	JUNCTION BOX - 6'X6'	EA	1
10.03	CURB INLET - ROUND 60" BASE, PW-10 REQ'D	EA	1
10.06R	CURB INLET - 6' BOX, PW-10 REQ'D	EA	1
13.42P	STORM DRAIN PIPE, 42" SIDEDRAIN	LF	282
13.42A	STORM DRAIN PIPE, 51"X31" CROSS-DRAIN	LF	43
13.42X	22.5 DEGREE BEND, 42" SIDEDRAIN	EA	2
13.61	TIE INTO EXISTING JUNCTION BOX	EA	1
14.01	SOLID SODDING, MATCH EXISTING	SY	710
16.01	MAINTENANCE OF TRAFFIC	LS	1
17.01	PAVEMENT REPAIRS	SY	26
18.01	REMOVE AND REPLACE FENCE	LF	28
18.45	RIPRAP - GROUTED	CY	11
19.10	FINAL CLEANUP	LS	1
24.02	CHECK DAM	CY	1
24.11	SILT FENCE - TYPE A (SFA)	LF	300
24.14	STORM DRAIN OUTLET PROTECTION (ST)	EA	1
606.42P	FLARED END SECTION 42" HDPE	EA	1
625.01	GEOTEXTILE FABRIC (TYPE 1)	SY	10
SS3.0	4" SCHEDULE 40 SANITARY SEWER W/CLEANOUTS	LF	40

PRICING OF ESTIMATED QUANTITIES			
CLR PROJECT 07-15-DR-275			
JANMAR DRIVE SANITARY SEWER RELOCATION			
1-Oct-19			
ITEM #	ITEM DESCRIPTION	UNIT	QUANTITY
2.01	SITE PREPERATION	LS	1
3.01	UNCLASSIFIED EXCAVATION	CY	27
SS1.1	8" SDR 26 PVC PIPE INSTALL	LF	290
SS2.0	MANHOLE (UP TO 6' IN DEPTH)	EA	3
SS2.1	ADDITIONAL MANHOLE DEPTH	VF	10.5
SS2.2	CONNECTION TO EXISTING MANHOLE	EA	2
SS3.0	4" SCHEDULE 40 SANITARY SEWER SERVICE W/CLEANOUTS	LF	30
16.01	MAINTENANCE OF TRAFFIC	LS	1
17.01	PAVEMENT REPAIRS	SY	22
20.01	CLASS 1 EMBEDMENT FOR FLEXIBLE PIPE	TON	45
20.02	SELECT BACKFILL	CY	22
23.03	CLASS 7 BACKFILL	TON	7





- GENERAL NOTE:
- TREES TO BE REMOVED UNDER 2.01 SITE PREPARATIONS.
 - REMOVE AND HAUL OFF TREE, GRIND STUMPS TO 20" MINIMUM DEPTH. VOID TO BE FILLED AND COMPACTED WITH TOPSOIL. DISTURBED GROUND TO BE GRADED TO MATCH EXISTING AND TO PROVIDE POSITIVE DRAINAGE. DISTURBED GROUND TO BE SODDED TO MATCH EXISTING GRASS.
 - ALL DISTURBED AREAS TO BE CLEANED OF AN DEBRIS, GRADED, AND SODDED. SOD TO MATCH EXISTING GRASS.
 - UTILITIES SHOWN ARE TO BE CONSIDERED GENERAL LOCATION. ALL UTILITIES MUST BE FIELD VERIFIED PRIOR TO CONSTRUCTION.
 - ARKANSAS 811 MUST BE CALLED TO LOCATE UTILITIES AT LEAST 48 HOURS PRIOR TO CONSTRUCTION.
 - ALL RESIDENTS ARE TO BE NOTIFIED 48 HOURS PRIOR TO CONSTRUCTION.
 - EFFORTS MUST BE TAKEN TO MINIMIZE THE LOSS OF PARKING OR DRIVE ACCESS TO HOME OWNERS.
 - THERE ARE 3 SANITARY SEWER SERVICES ALONG THE EXISTING LINE, THESE ARE TO BE REINSTALLED DURING RELOCATION.
 - THERE SHALL BE NO INTERRUPTIONS TO SANITARY SEWER SERVICE.



REVISIONS	DATE

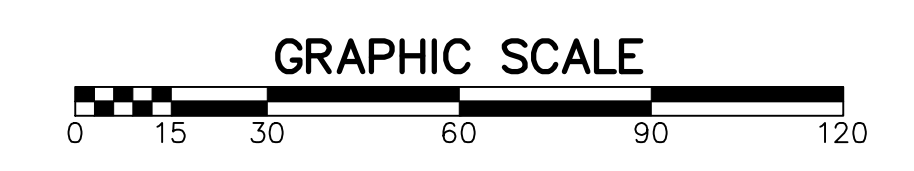
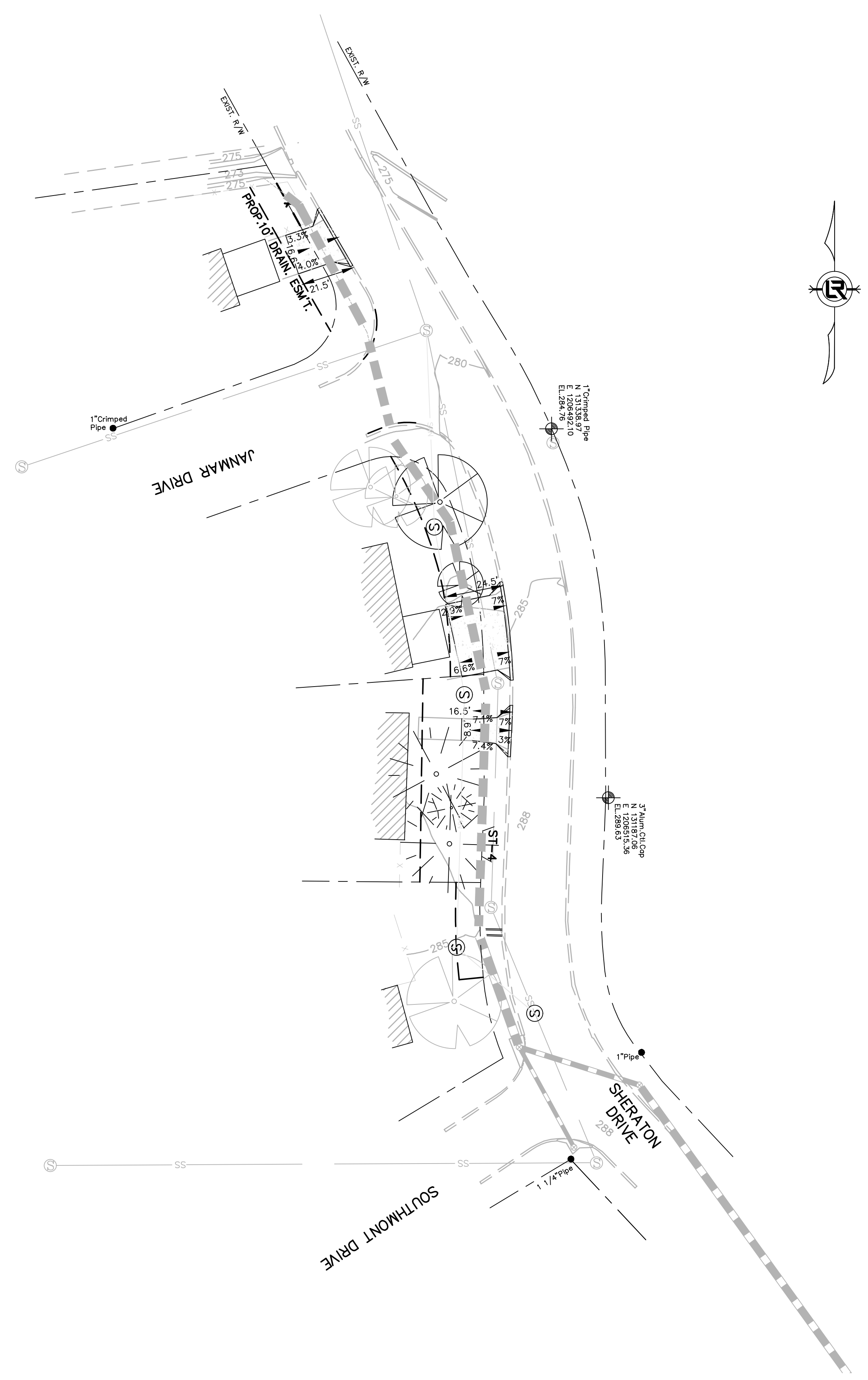
CITY OF LITTLE ROCK, ARKANSAS
JANMAR DRIVE DRAINAGE IMPROVEMENTS
PLAN & PROFILE

DEPARTMENT OF PUBLIC WORKS
CIVIL ENGINEERING
 701 W. MARKHAM
 LITTLE ROCK, ARKANSAS 72201

DRAWN BY
 LL
DESIGNED
 JRH
CHECKED
 JRH
DATE
 04/05/19
SCALE
 1"=5'/50'

PROJECT NO.
 07-15-DR-275
SHEET NO.
 C3


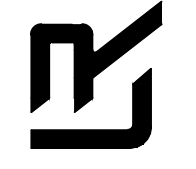
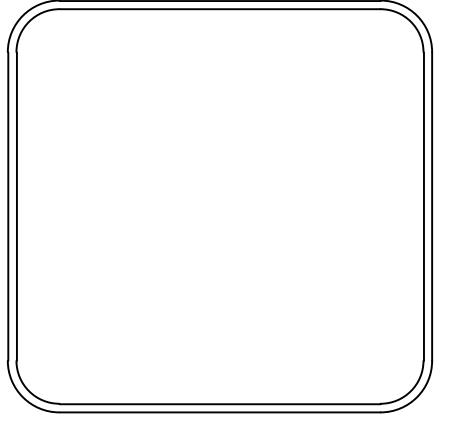
C:\working\0715\0715DR275\JANMAR PLANS.dwg, DRIVEWAY CA, 11/13/2019, 10:08:20 AM, LUGHTFO



REVISIONS	DATE

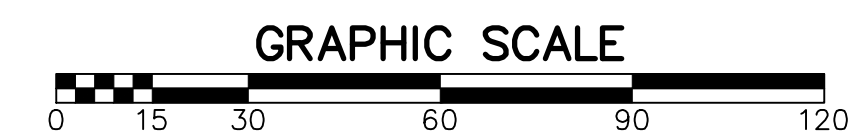
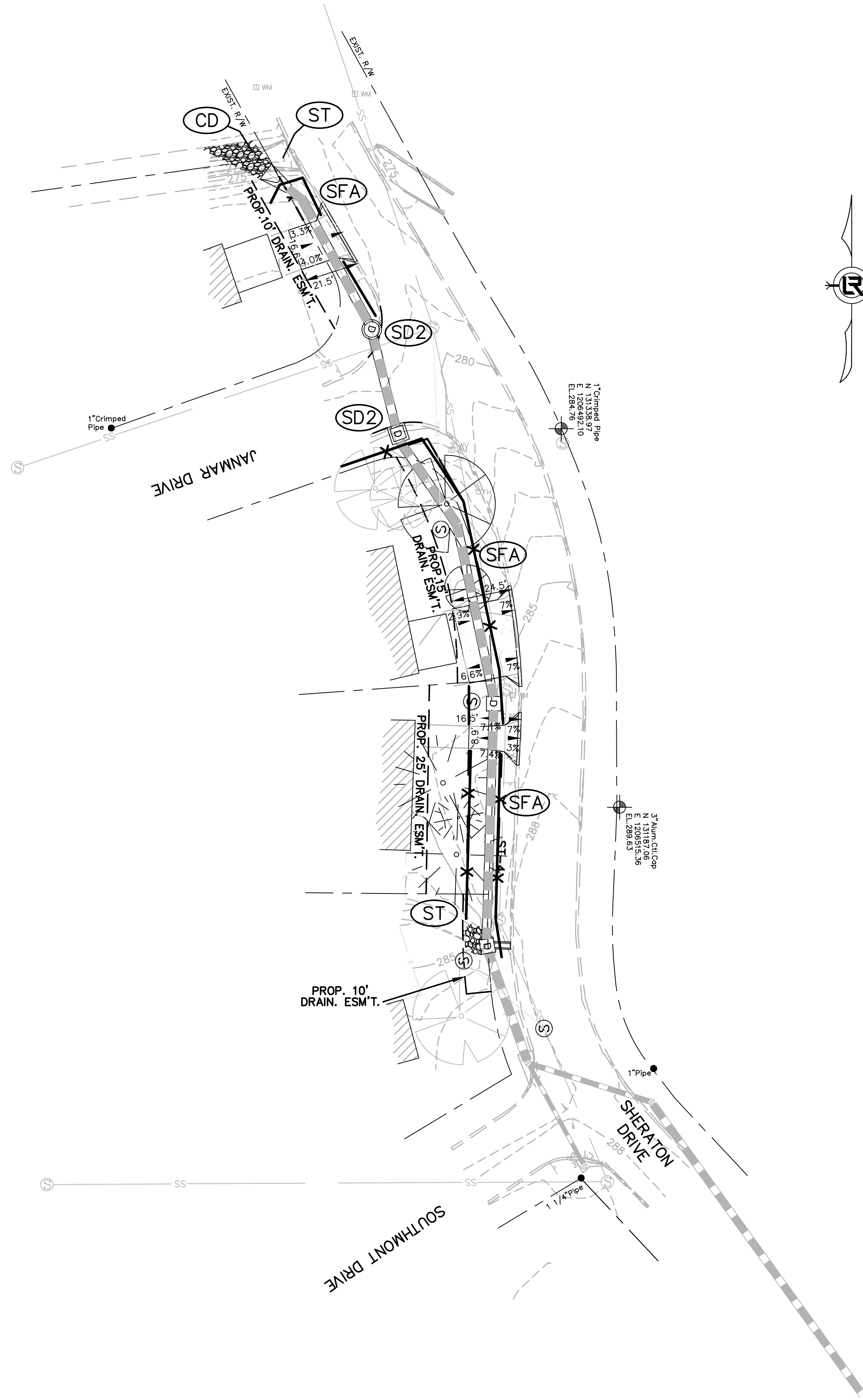
CITY OF LITTLE ROCK, ARKANSAS
JANMAR DRIVE DRAINAGE IMPROVEMENTS
 DRIVEWAY GRADES

DEPARTMENT OF PUBLIC WORKS
 CIVIL ENGINEERING
 701 W. MARKHAM
 LITTLE ROCK, ARKANSAS 72201

DRAWN BY
 LL
 DESIGNED
 JRH
 CHECKED
 JRH
 DATE
 04/05/19
 SCALE
 1"=30'
 PROJECT NO.
 07-15-DR-275
 SHEET NO.
C4

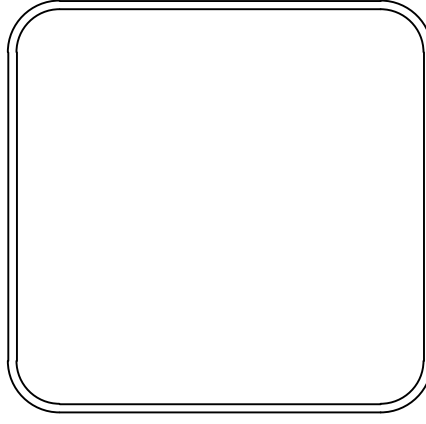
C:\working\0715\0715DR275\JANMAR PLANS.dwg, EC 05, 11/12/2019 10:09:49 AM, LUGHTFO



REVISIONS	DATE

CITY OF LITTLE ROCK, ARKANSAS
JANMAR DRIVE DRAINAGE IMPROVEMENTS
EROSION CONTROL

DEPARTMENT OF PUBLIC WORKS
 CIVIL ENGINEERING
 701 W. MARKHAM
 LITTLE ROCK, ARKANSAS 72201

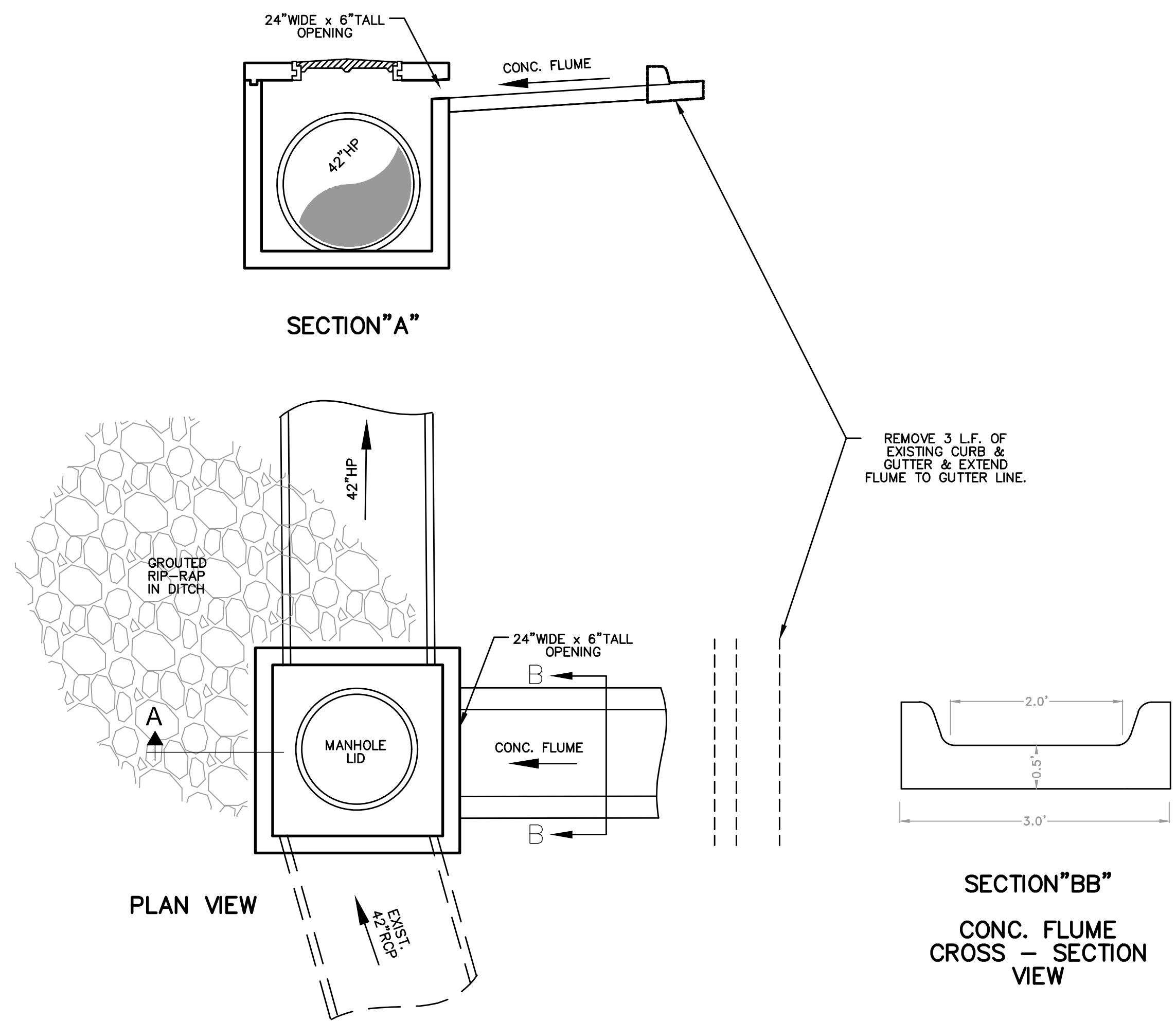


DRAWN BY LL
DESIGNED JRH
CHECKED JRH
DATE 04/05/19
SCALE 1"=30'
PROJECT NO. 07-15-DR-275
SHEET NO. C5

REVISIONS	DATE

CITY OF LITTLE ROCK, ARKANSAS
 JANMAR DRIVE DRAINAGE IMPROVEMENTS

MISC. DETAILS



J1-2 & CONCRETE FLUME DETAILS
 NOT TO SCALE

DEPARTMENT OF PUBLIC WORKS
 CIVIL ENGINEERING
 701 W. MARKHAM
 LITTLE ROCK, ARKANSAS 72201

DRAWN BY	LL
DESIGNED	JRH
CHECKED	JRH
DATE	04/05/19
SCALE	1"=30'
PROJECT NO.	07-15-DR-275
SHEET NO.	C6

C:\working\07150800420\JANMAR\PLANS.dwg, DET A153.CA, 17192019 10:02:21 AM, L11081740