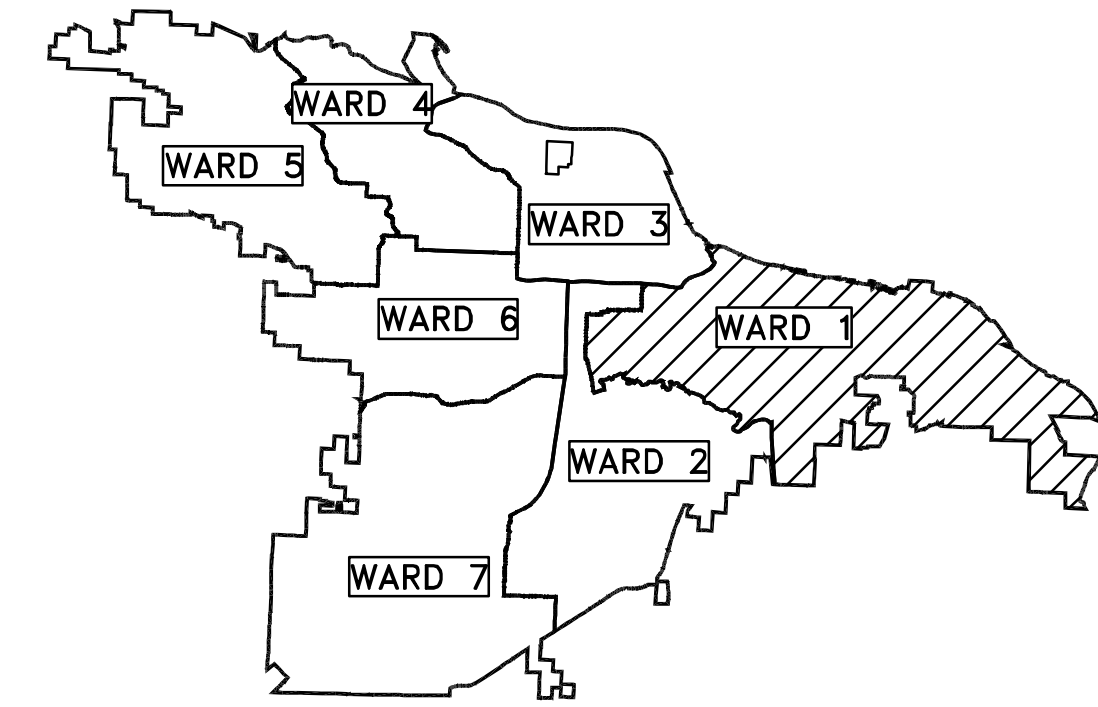


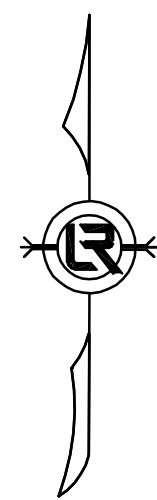
CLR PROJECT 01-16-DR-10

WARD 1

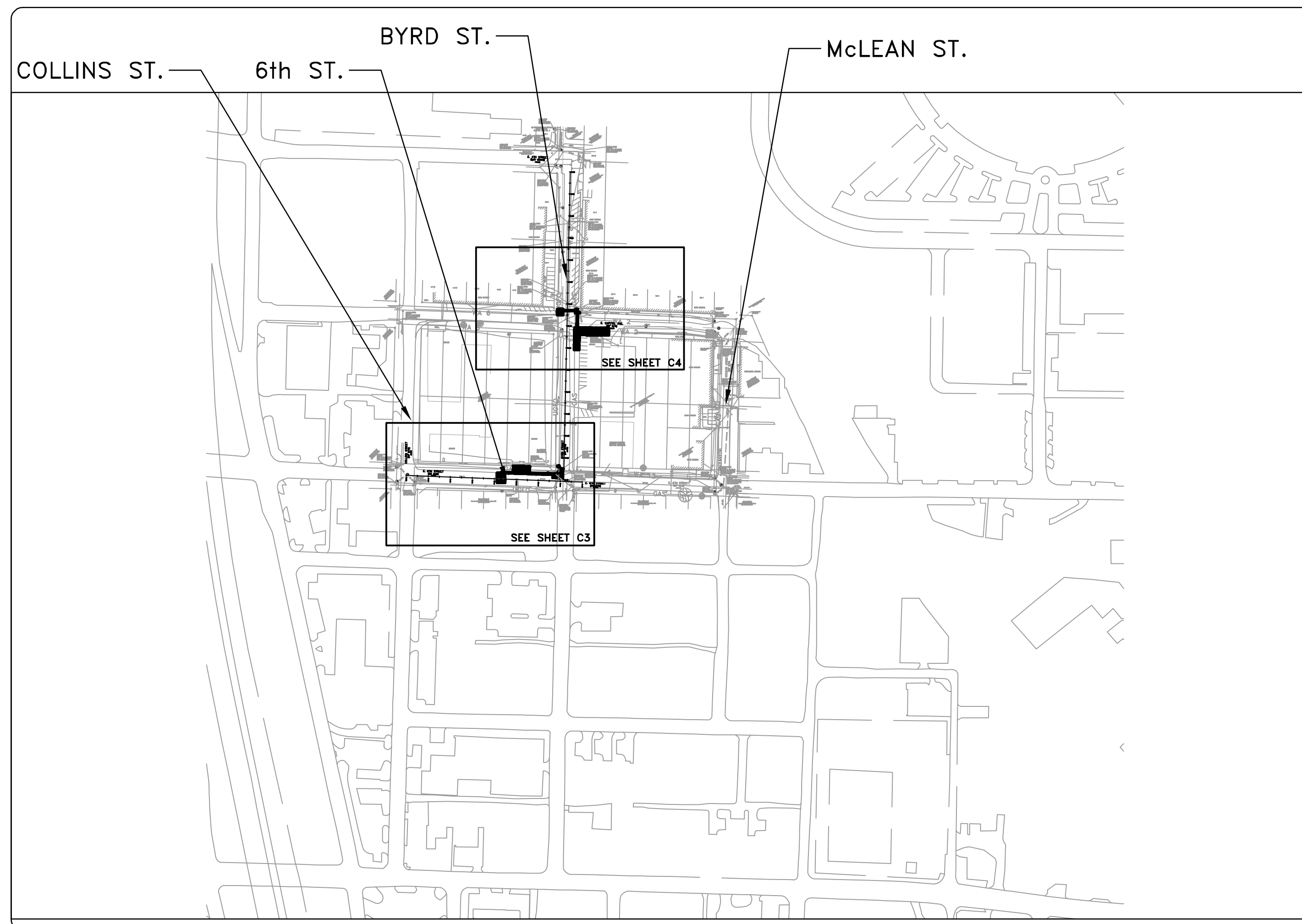
6th STREET DRAINAGE



PROJECT LOCATION – WARD 1
 34°44'31"N 92°15'36.45"W
 34.7419 -92.2601



SCALE: 1"=200'



SHEET NO.	TITLE
C1	COVER SHEET
C2	LEGEND AND DETAIL SHEET
C3	6th ST.: COLLINS ST. - BYRD ST. PLAN SHEET
C4	BYRD ST. - EAST CAPITOL AVE. PLAN SHEET
C5	6th ST.: COLLINS ST. - BYRD ST. EROSION CONTROL SHEET
C6	6th ST. MAINTENANCE OF TRAFFIC
C7	BYRD ST. MAINTENANCE OF TRAFFIC



2019-2021
BOND PROGRAM

DEPARTMENT OF PUBLIC WORKS
 CIVIL ENGINEERING
 701 WEST MARKHAM STREET
 LITTLE ROCK, ARKANSAS 72201

Revised per Addendum 1 5 February 2020



Know what's below.
 Call before you dig.



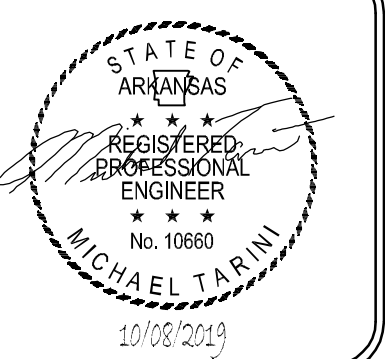
1300 east 6th Street little rock, ar 72202
 501.372.2900 cromwell.com

REVISIONS DATE

CITY OF LITTLE ROCK, ARKANSAS
 WARD 1 01-16-DR-10 6th STREET DRAINAGE

COVER SHEET

DEPARTMENT OF PUBLIC WORKS
 CIVIL ENGINEERING
 701 W. MARKHAM
 LITTLE ROCK, ARKANSAS 72201



DRAWN BY

MJT

DESIGNED

MJT

CHECKED

CGW

DATE

10-08-2019

SCALE

N.T.S.

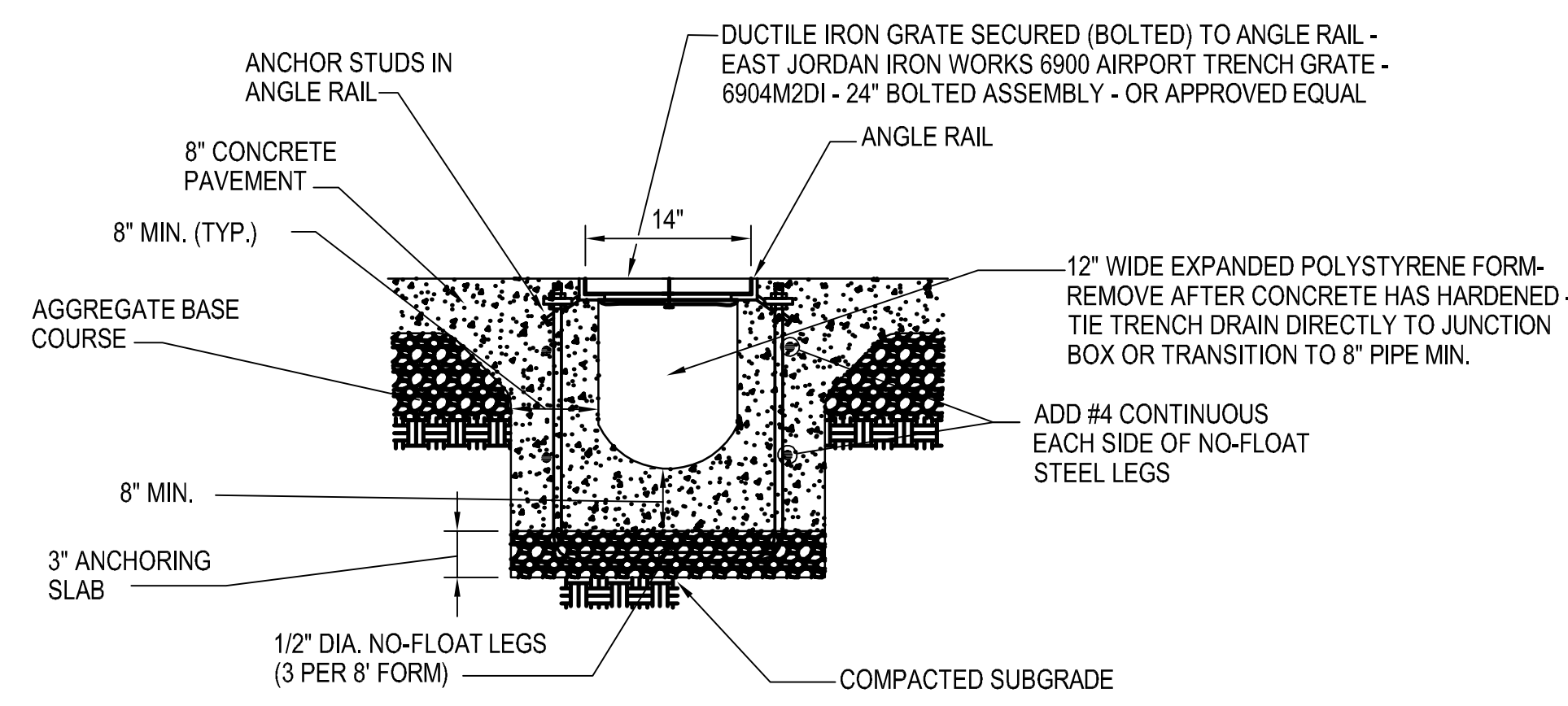
PROJECT NO.

CLR #17201

SHEET NO.

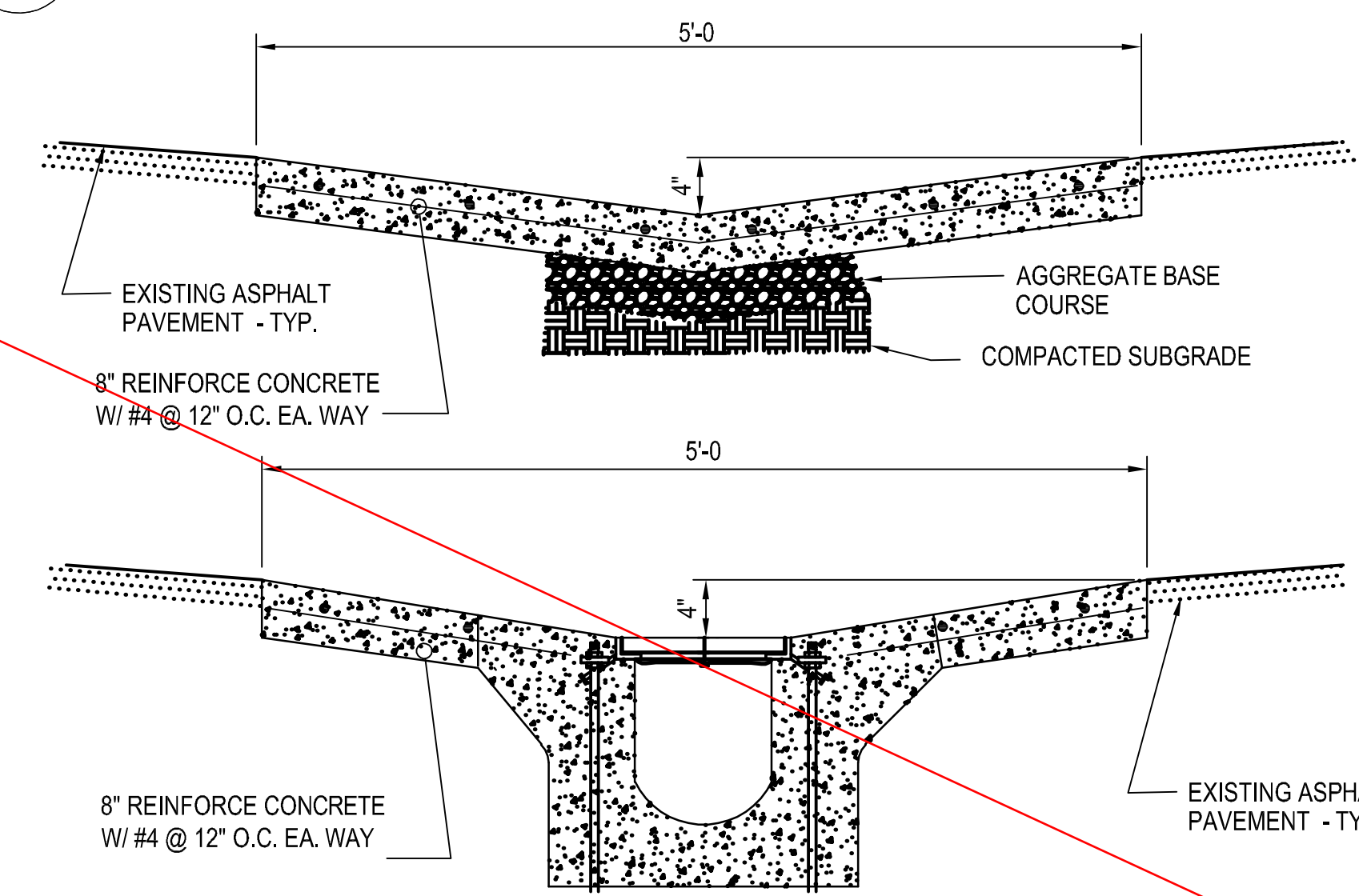
C1

CLR PROJECT #17201			
WARD 1 6TH Street Drainage 01-16-DR-10			
8-Oct-19			
ITEM #	ITEM DESCRIPTION	UNIT	QUANTITY
2.01	SITE PREPARATION	LS	1
3.40	TOPSOIL	CY	25
4.01	AGGREGATE BASE COURSE	TON	60
6.01	ACHM SURFACE COURSE	TON	55
6.20	ACHM BINDER COURSE	TON	85
7.18	CONCRETE DRIVEWAY (8" THICK), STANDARD FINISH	SF	885
8.03	CONCRETE CURB AND GUTTER (CLASS 3)	LF	115
9.06	CONCRETE SIDEWALK 6" THICK	SF	30
10.01	JUNCTION BOX	EA	4
10.04	CURB INLET 5'	EA	1
10.14	10' WING EXTENSION	EA	1
10.81	Rebuild Inlet Top With Cast Iron Frame & Grate	EA	2
13.18A	STORM DRAIN ARCH PIPE 13-1/2"x22" (CROSS DRAIN)	LF	78
13.24C	STORM DRAIN PIPE 24" (CROSS DRAIN)	LF	17
13.24C	STORM DRAIN PIPE 24" (SIDE DRAIN)	LF	105
13.30C	STORM DRAIN PIPE 30" (SIDE DRAIN)	LF	21
13.61	TIE INTO EXISTING BOX CULVERT	EA	1
13.63	CONCRETE PLUG ON EXISTING STORM DRAIN	EA	6
16.01	MAINTENANCE OF TRAFFIC	LS	1
19.01	FINAL CLEANUP	LS	1
24.09	SEDIMENT BARRIER, BLOCK (SD4)	EA	1
24.13	SILT FENCE - TYPE C (SFC)	LF	130
24.18	DISTURBED AREA STABILIZATION - PERMANENT GRASSING (TS3)	AC	0.04
26.10	TRENCH SAFETY AND EXCAVATION	LS	1
719.04Y	THERMOPLASTIC PAVEMENT MARKING YELLOW 4"	LF	60
SP	TRENCH DRAIN	LF	88
SP	Curb Inlet / Junction Box (CICB1)	EA	1



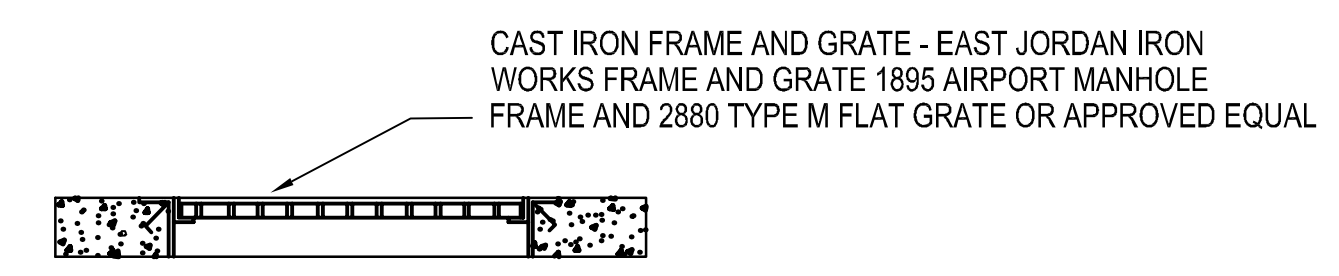
- NOTES:
- TRENCH DRAIN SHALL BE CONSTRUCTED USING A PRE-MANUFACTURED FORMING SYSTEM (TRENCH FORMER BY ABT, INC. OR APPROVED EQUAL). CONSTRUCT IN ACCORDANCE WITH THE MANUFACTURER'S RECOMMENDATIONS.
 - INSTALL ANGLE RAIL CLOSURE ON BOTH ENDS OF TRENCH DRAIN.
 - TRENCH DRAIN SHALL SLOPE @ 1/8"/FT.

1 TRENCH DRAIN DETAIL
NOT TO SCALE



- NOTES:
- CONCRETE SHALL HAVE A MINIMUM COMPRESSIVE STRENGTH OF 3,500 PSI AT 28 DAYS.
 - SAW CUT ALL IMPROVEMENTS AT REMOVAL LINES.
 - SEE DETAIL 1 FOR TRENCH DRAIN INFORMATION.

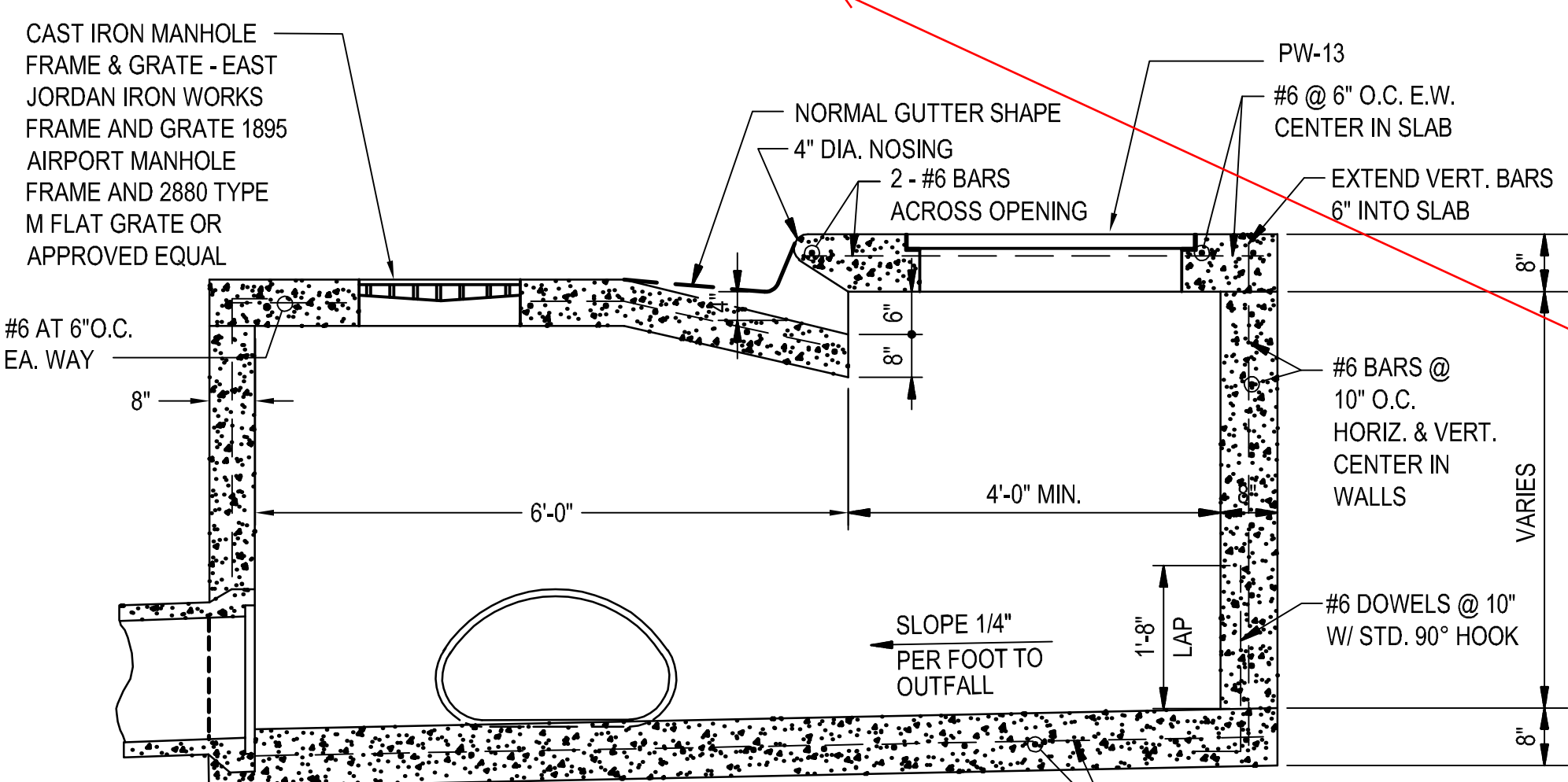
3 DRAINAGE SWALE DETAIL
NOT TO SCALE



- NOTES:
- CITY OF LITTLE ROCK STANDARD DETAIL PW-11 FOR OTHER DETAILS.

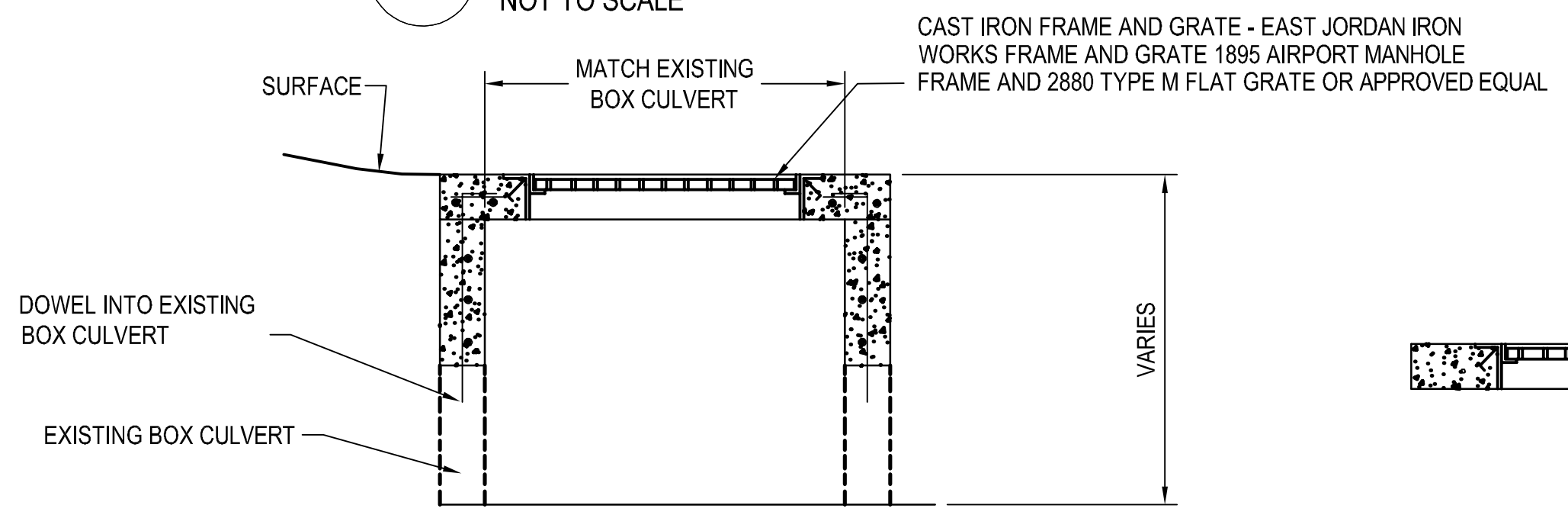
5 STANDARD DETAIL PW-11 MODIFICATION FOR NEW JUNCTION BOX
NOT TO SCALE

EXISTING	PROPOSED
IRON ROD	PROPOSED CONTOUR
PK NAIL	PROPOSED SPOT ELEVATION
R.R. SPIKE	PROPOSED SPOT CURB ELEVATION
CONC. MONUMENT	STORM SEWER - PIPE
WATER VALVE	STORM SEWER - MITERED END SECTION
WATER METER	STORM SEWER - GRATE INLET
FIRE HYDRANT	STORM SEWER - JUNCTION BOX
GAS METER	STORM SEWER - FLARED END SECTION
CLEAN-OUT	STORM SEWER - HEADWALL
GUARD POST (BOLLARD)	STORM SEWER - SINGLE WING
SIGN POST	STORM SEWER - DOUBLE WING
BENCHMARK	STORM SEWER - 10' THROAT EXTENSION
STORM SEWER MANHOLE	STORM SEWER - AREA INLET
SANITARY SEWER MANHOLE	GRADE BREAK LINE
TELEPHONE MANHOLE	HIGH POINT
ELECTRIC MANHOLE	LOW POINT
TELEPHONE BOX	CUT LINE
ELECTRIC BOX	FILL LINE
CABLE BOX	SANITARY SEWER PIPE
UTILITY POLE	SANITARY SEWER MANHOLE
GUY WIRE	PROPOSED CURB
LIGHT POLE	PROPOSED CONCRETE
POST OR POLE (TYPE AS NOTED)	PROPOSED ASPHALT
MAILBOX	SEDIMENT BARRIER - BLOCK
DECIDUOUS TREE	SILT FENCE - TYPE C
EVERGREEN/CONIFEROUS TREE	DISTURBED AREA STABILIZATION -PERMANENT GRASSING
BUSH	
PROPERTY LINE	
SETBACK LINE	
EASEMENT LINE	
CURB	
FENCE	
OVERHEAD ELECTRIC	
OVERHEAD TELEPHONE	
OVERHEAD CABLE	
UNDERGROUND TELEPHONE	
UNDERGROUND ELECTRIC	
UNDERGROUND CABLE	
WATER LINE	
SEWER LINE	
GAS LINE	
STORM SEWER/CULVERT	
CONTOUR LINE	



- NOTE:
COMBINATION CURB INLET/JUNCTION BOX SHALL MEET REQUIREMENTS OF PW-1A, PW-3, PW-10, PW-11, AND PW-13. ASSOCIATED CURB AND GUTTER TIE-IN SHALL MEET PW-29 REQUIREMENTS.

2 OFFSET CURB INLET CATCH BOX DETAIL (CICB1)
NOT TO SCALE



- NOTES:
- CITY OF LITTLE ROCK STANDARD DETAIL PW-11 FOR OTHER DETAILS.

4 STANDARD DETAIL PW-11 MODIFICATION GRATE INLET TOP DETAIL
NOT TO SCALE

ADD THESE ITEMS:		
11.45	640	Sq. Ft. Concrete Swale (8" Thick), Standard Finish
17.01	2987	Sq. Ft. Asphalt Pavement Repair (PW-23)
18.50	30	Sq. Ft. Access Ramp

REVISIONS	DATE

CITY OF LITTLE ROCK, ARKANSAS
WARD 1 01-16-DR-10 6th STREET DRAINAGE
LEGEND AND DETAIL SHEET

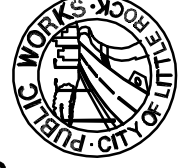
DEPARTMENT OF PUBLIC WORKS
CIVIL ENGINEERING
701 W. MARKHAM
LITTLE ROCK, ARKANSAS 72201

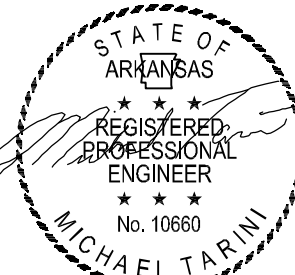


DRAWN BY
MJT
DESIGNED
MJT
CHECKED
CGW
DATE
10-08-2019
SCALE
N.T.S.
PROJECT NO.
CLR #17201
SHEET NO.
C2

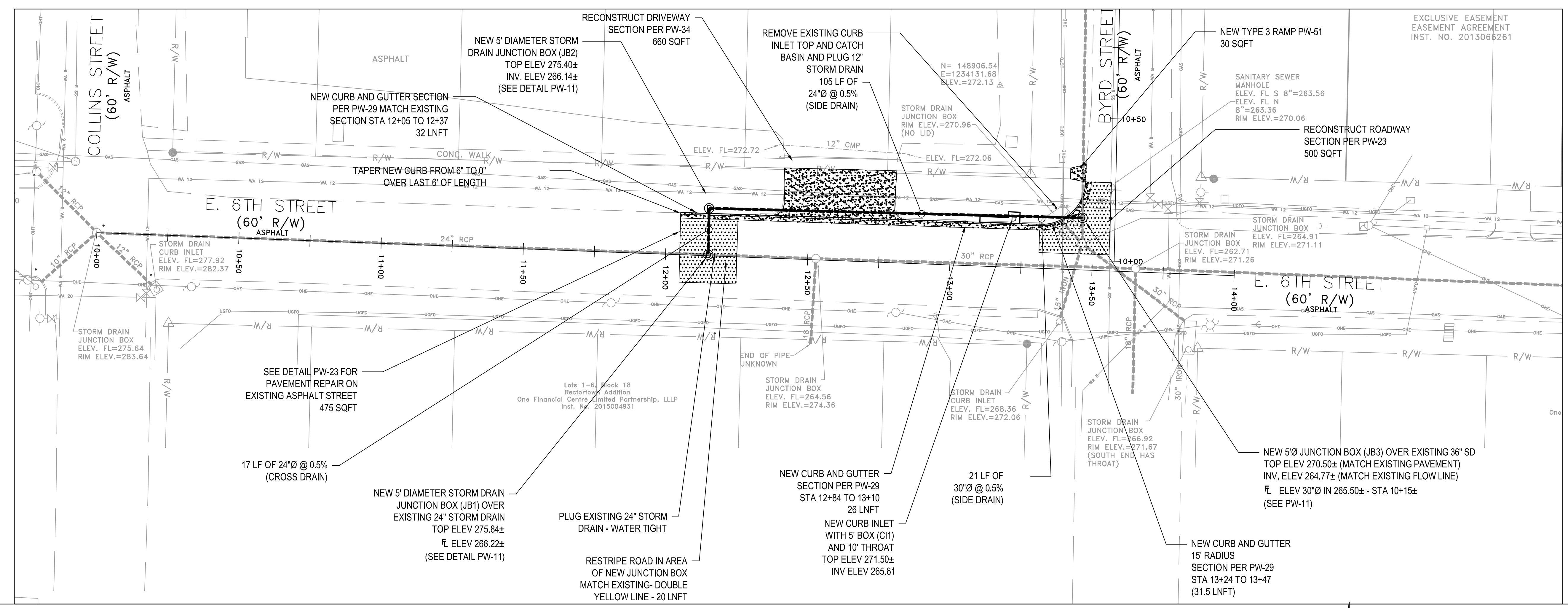
REVISIONS	DATE

CITY OF LITTLE ROCK, ARKANSAS
WARD 1 01-16-DR-10 6th STREET DRAINAGE
6th STREET: COLLINS STREET TO BYRD STREET PLAN SHEET

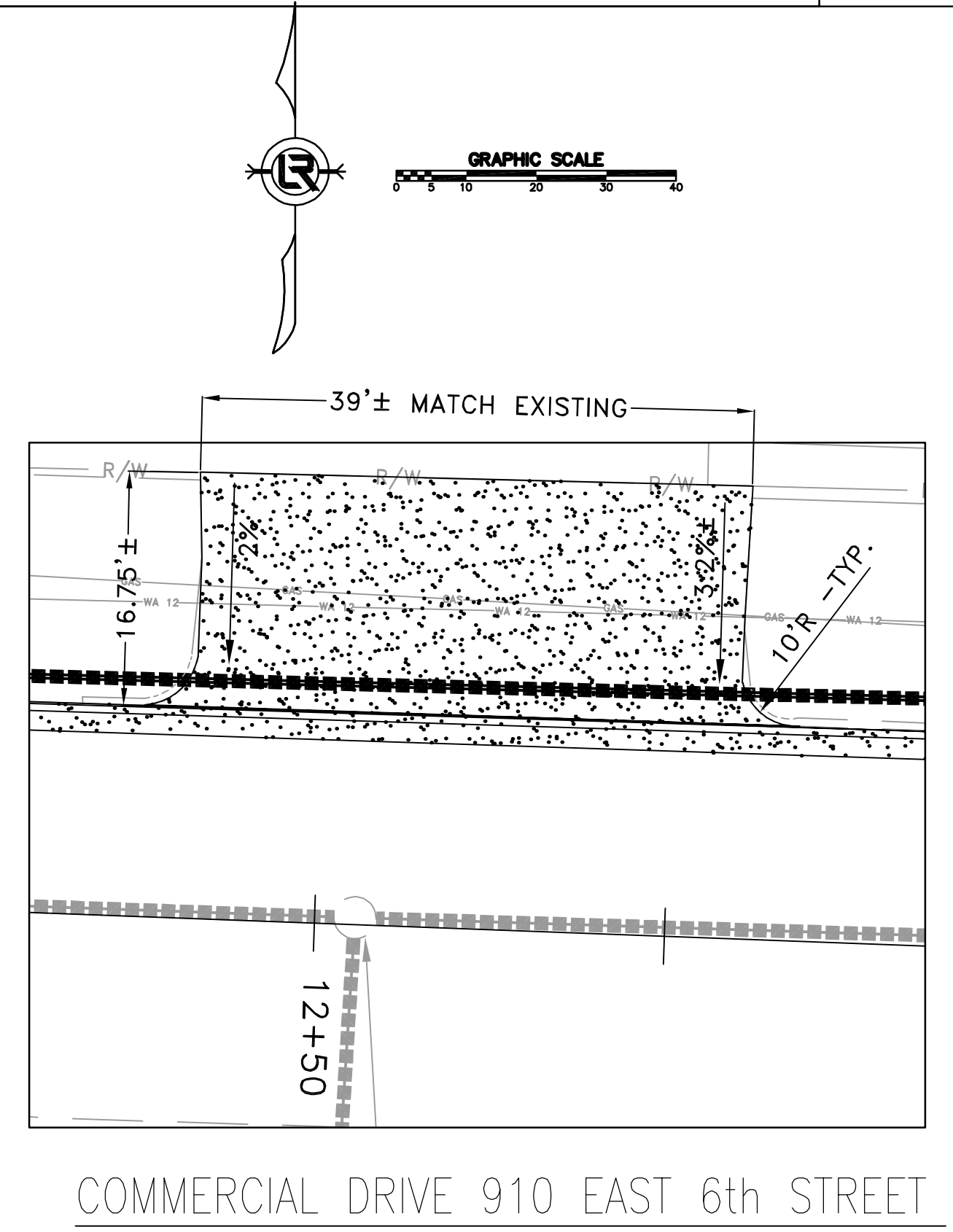
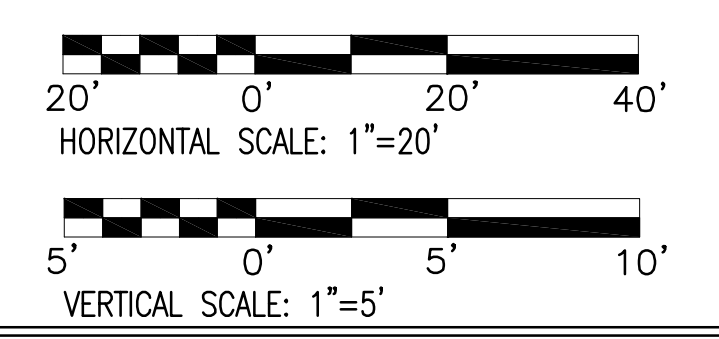
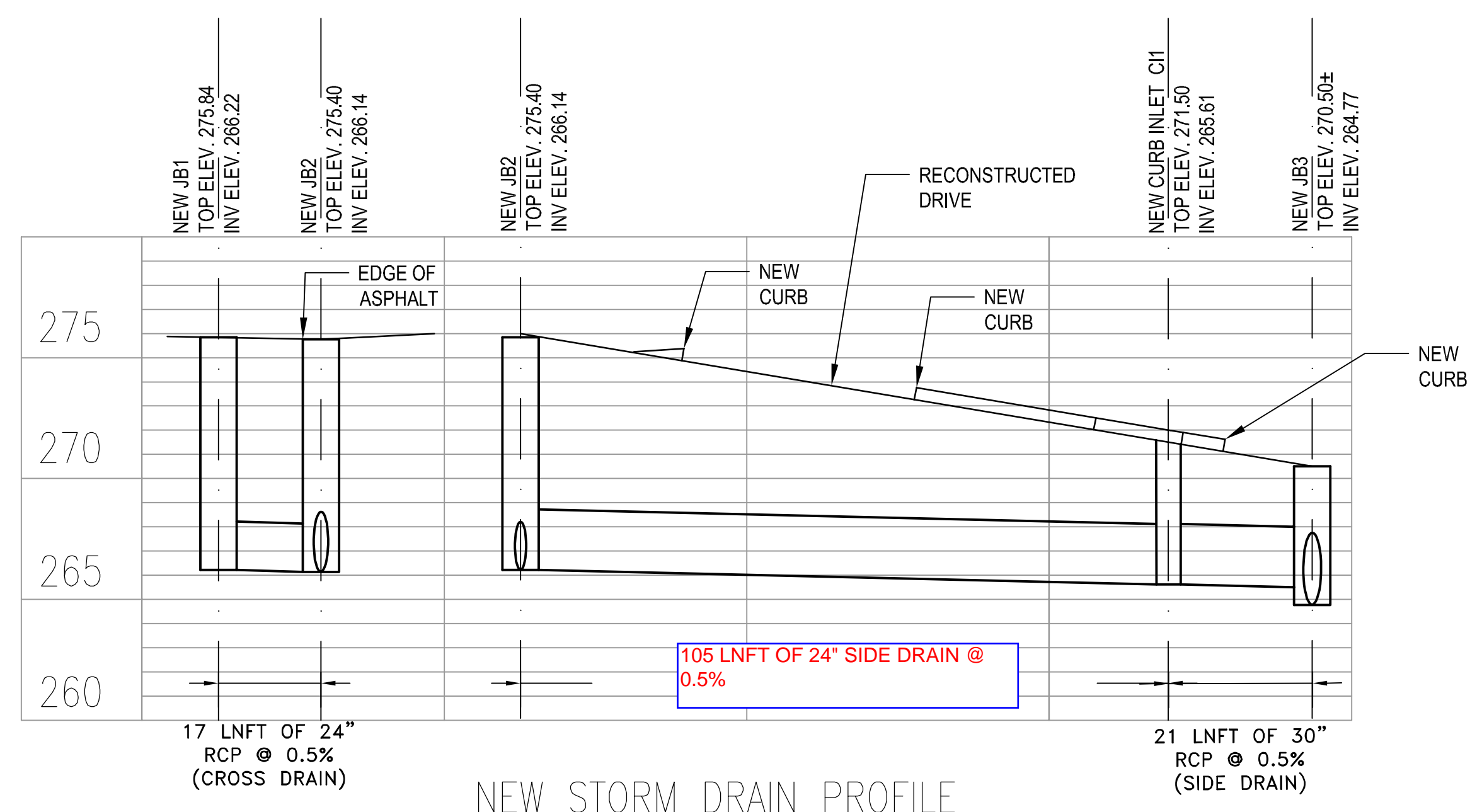

DEPARTMENT OF PUBLIC WORKS
CIVIL ENGINEERING
701 W. MARKHAM
LITTLE ROCK, ARKANSAS 72201


REGISTERED PROFESSIONAL ENGINEER
No. 10660
MICHAEL TARINI
10/08/2019

DRAWN BY
MJT
DESIGNED
MJT
CHECKED
CGW
DATE
10-08-2019
SCALE
20 SCALE
PROJECT NO.
CLR #17201
SHEET NO.
C3




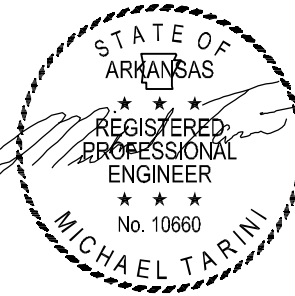
- NOTE:**
1. REFERENCE DETAIL PW-1B FOR JUNCTION BOX WALL THICKNESS, DIAMETER, AND REINFORCING.
 2. SAW CUT ALL IMPROVEMENTS AT REMOVAL LINES.



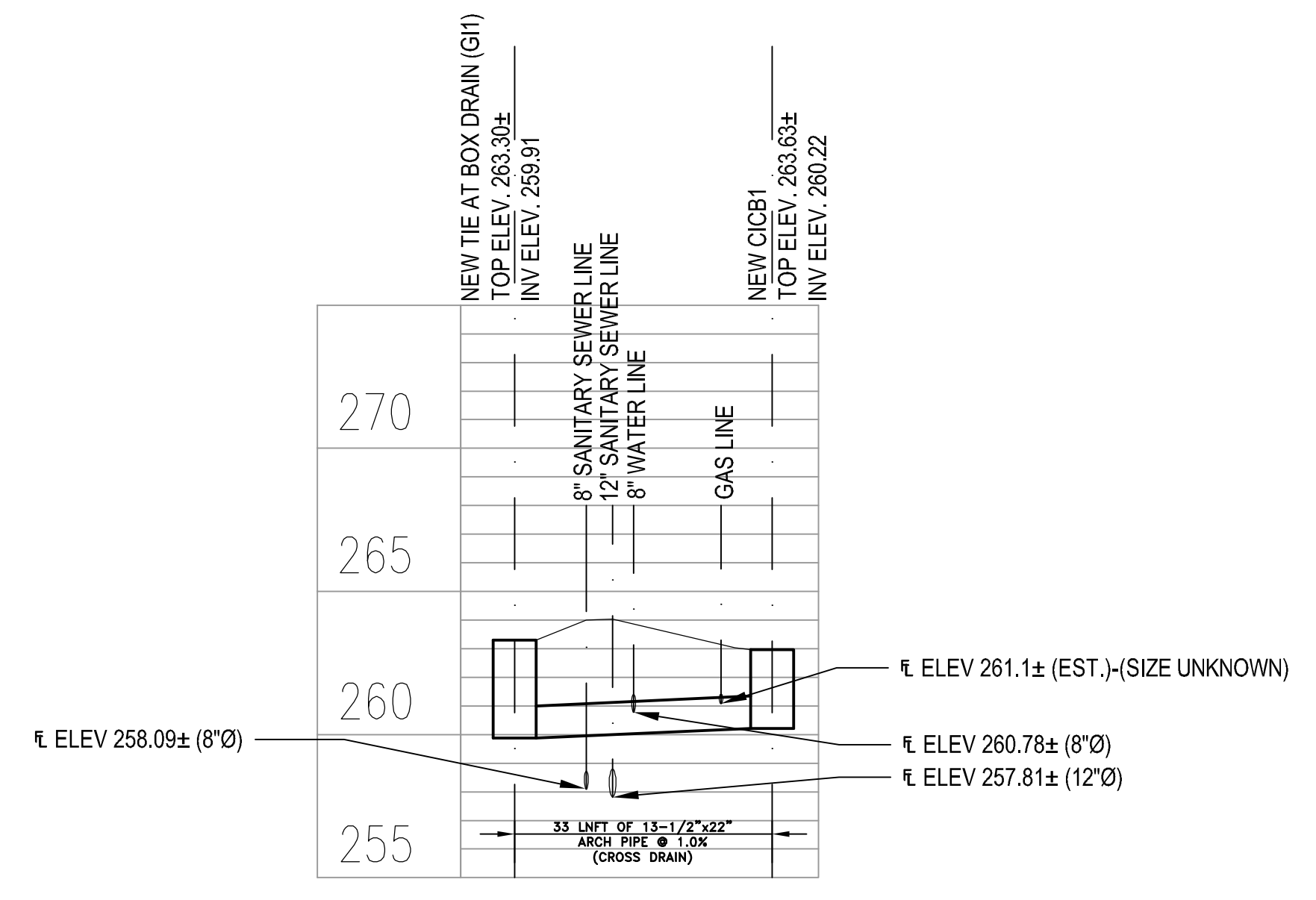
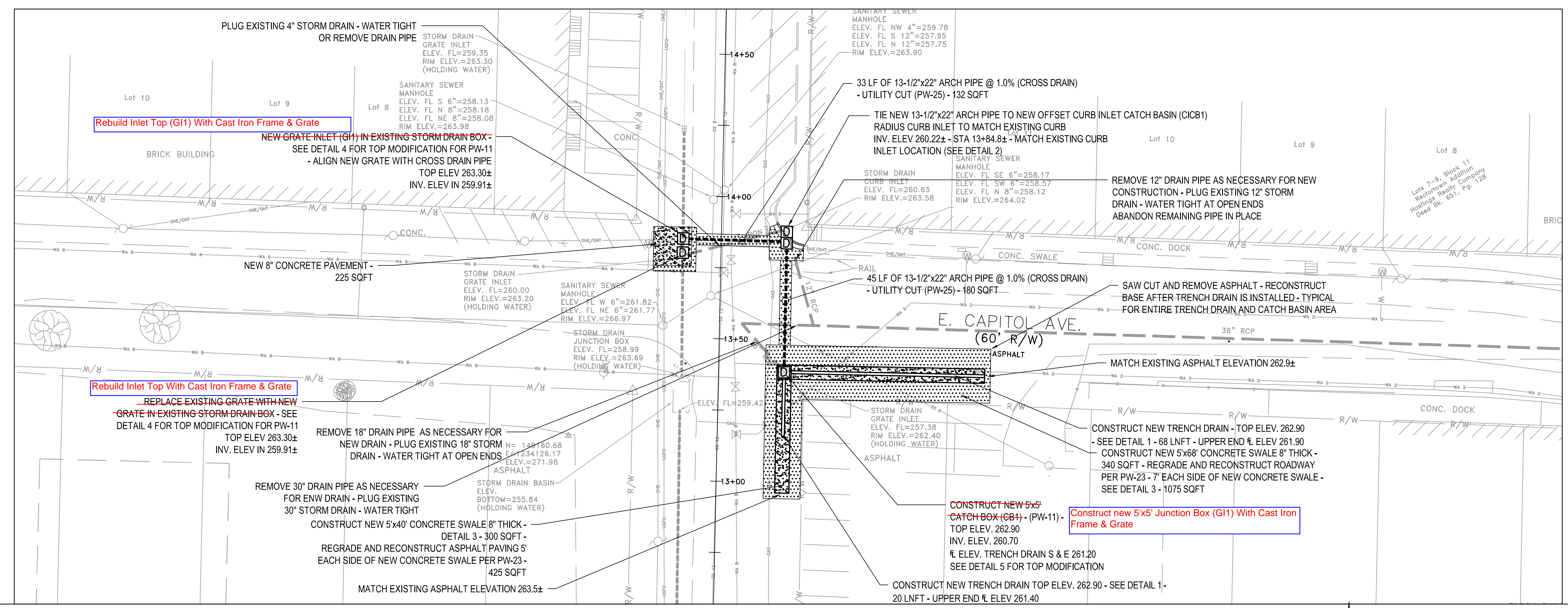
REVISIONS	DATE

CITY OF LITTLE ROCK, ARKANSAS
WARD 1 01-16-DR-10 6th STREET DRAINAGE
BYRD STREET - E. CAPITOL AVE.
PLAN SHEET

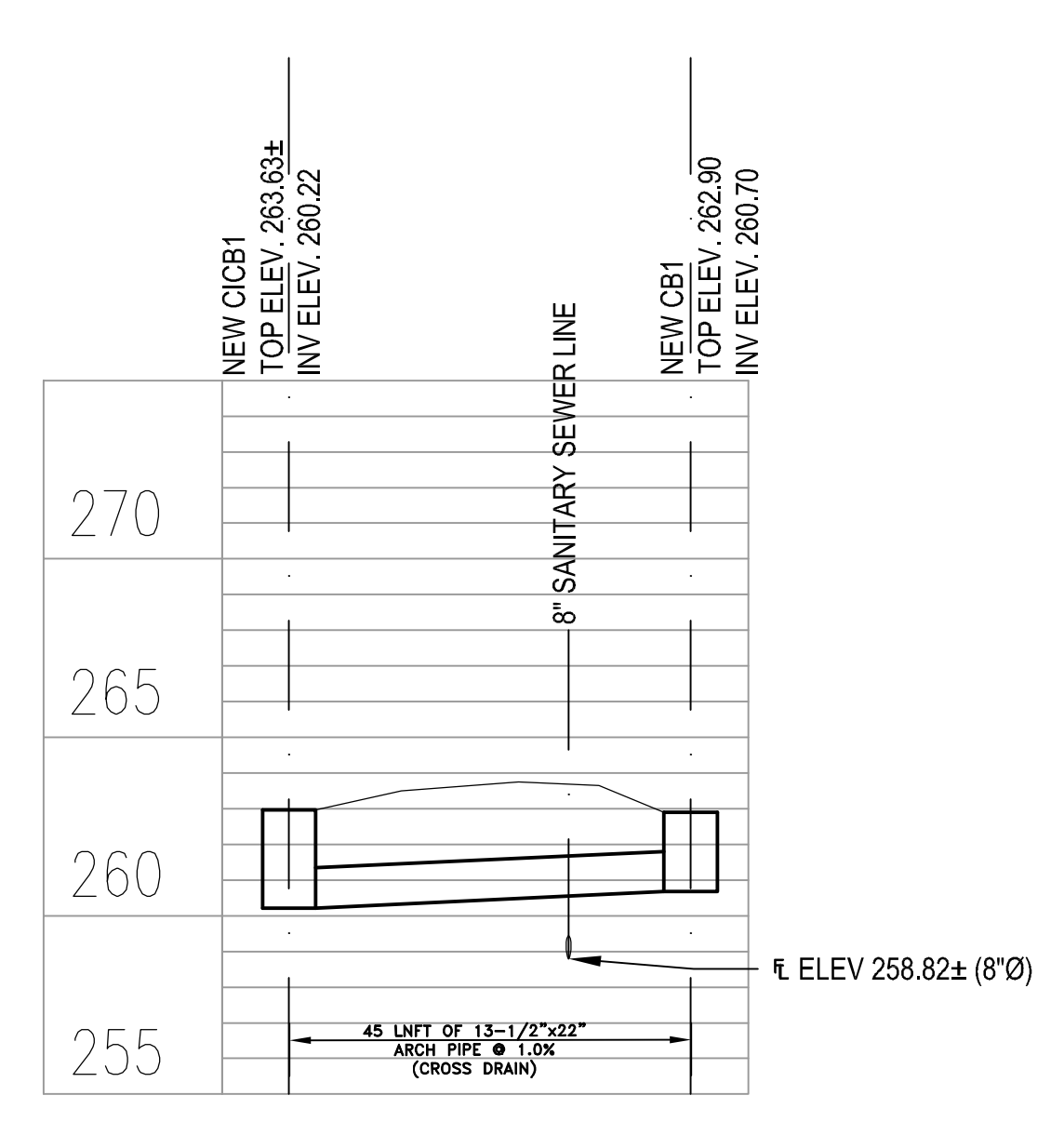
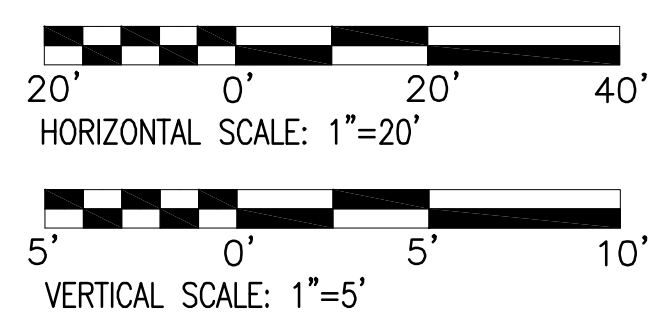

DEPARTMENT OF PUBLIC WORKS
CIVIL ENGINEERING
701 W. MARKHAM
LITTLE ROCK, ARKANSAS 72201


STATE OF ARKANSAS
REGISTERED PROFESSIONAL ENGINEER
No. 10660
MICHAEL TARINI
10/02/2019

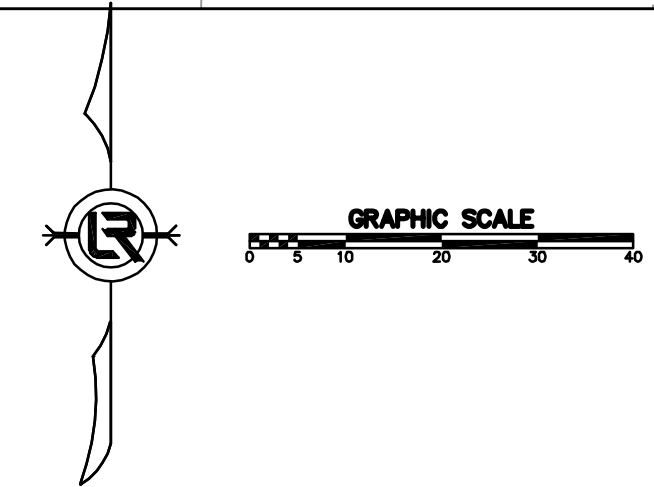
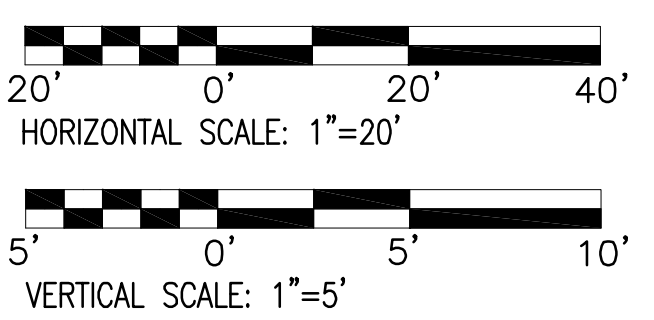
DRAWN BY
MJT
DESIGNED
MJT
CHECKED
CGW
DATE
10-08-2019
SCALE
20 SCALE
PROJECT NO.
CLR #17201
SHEET NO.
C4

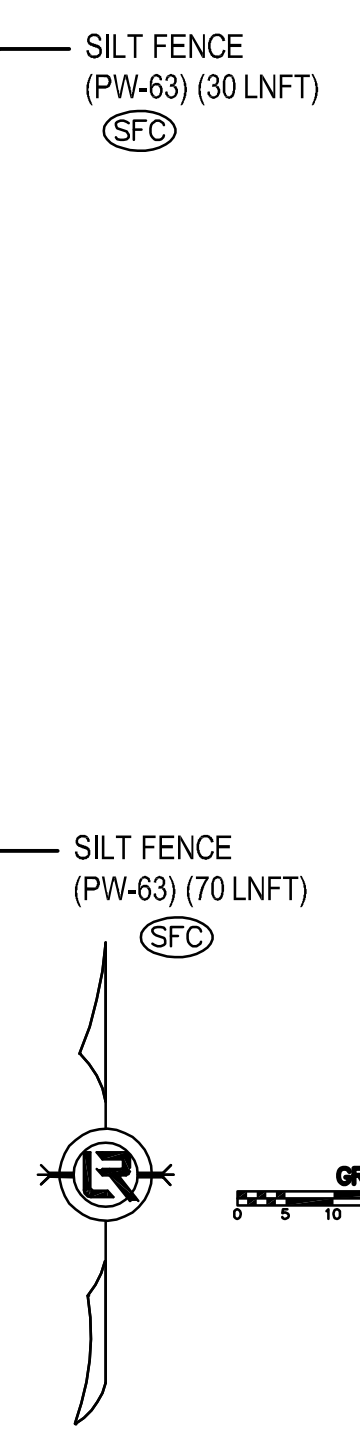
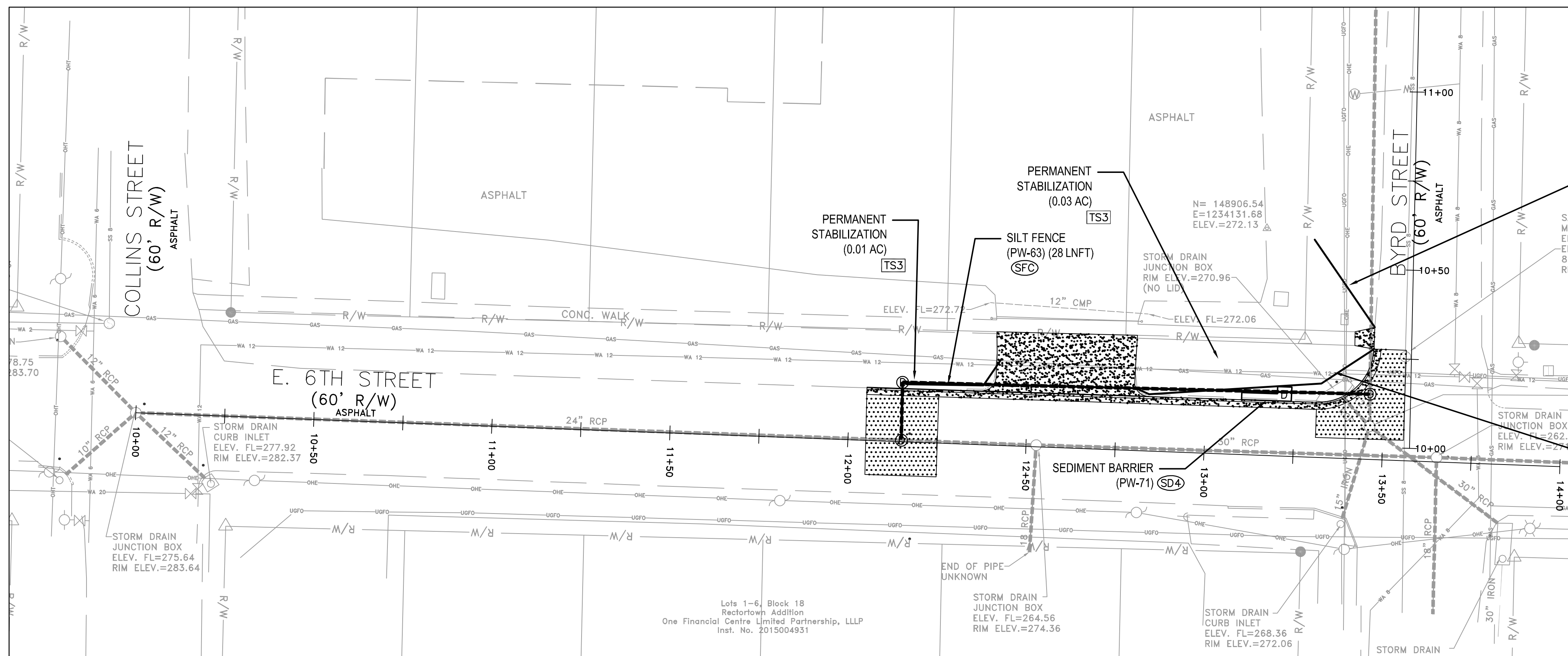


NEW STORM DRAIN PROFILE



NEW STORM DRAIN PROFILE





Lots 1-6, Block 18
 Reclotown Addition
 One Financial Centre Limited Partnership, LLLP
 Inst. No. 2015004931

REVISIONS	DATE

CITY OF LITTLE ROCK, ARKANSAS
WARD 1 01-16-DR-10 6th STREET DRAINAGE
6th STREET: COLLINS STREET TO
BYRD STREET EROSION CONTROL SHEET


DEPARTMENT OF PUBLIC WORKS
CIVIL ENGINEERING
 701 W. MARKHAM
 LITTLE ROCK, ARKANSAS 72201

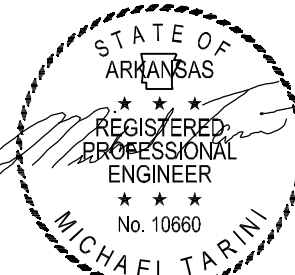
STATE OF ARKANSAS
 REGISTERED PROFESSIONAL ENGINEER
 No. 10660
 MICHAEL TARVIN
 10/08/2019

DRAWN BY
 MJT
DESIGNED
 MJT
CHECKED
 CGW
DATE
 10-08-2019
SCALE
 20 SCALE
PROJECT NO.
 CLR #17201
SHEET NO.
 C5

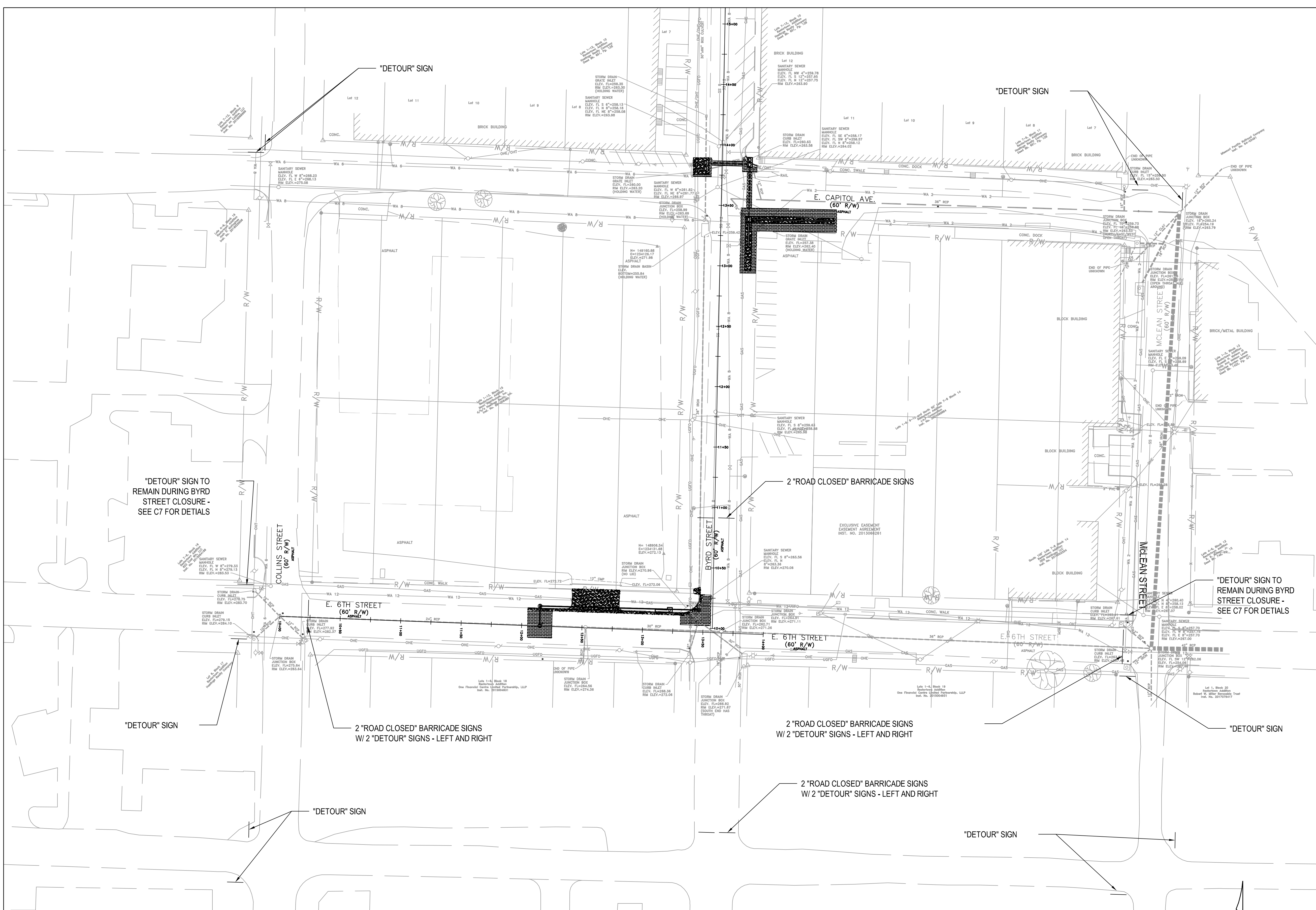
REVISIONS	DATE

CITY OF LITTLE ROCK, ARKANSAS
WARD 1 01-16-DR-10 6th STREET DRAINAGE
6th STREET MAINTENANCE OF TRAFFIC

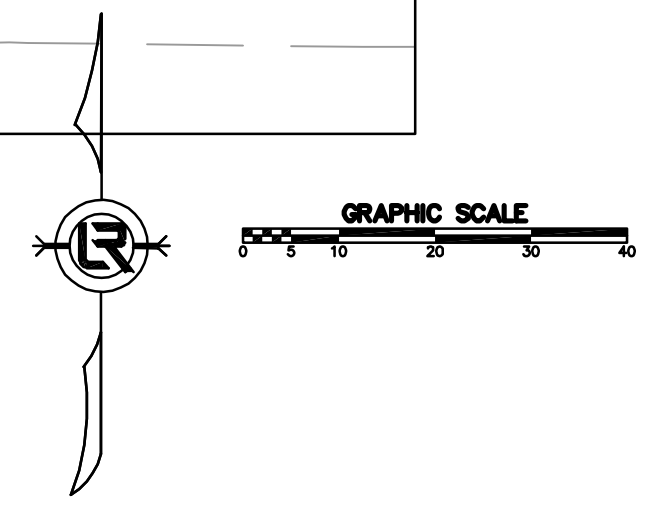

DEPARTMENT OF PUBLIC WORKS
CIVIL ENGINEERING
701 W. MARKHAM
LITTLE ROCK, ARKANSAS 72201


REGISTERED PROFESSIONAL ENGINEER
Michael Traini
No. 10660
10/02/2019

DRAWN BY
MJT
DESIGNED
MJT
CHECKED
CGW
DATE
10-08-2019
SCALE
20 SCALE
PROJECT NO.
CLR #17201
SHEET NO.
C6



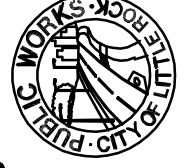

- NOTE:
- REFERENCE ARDOT STANDARD TRAFFIC CONTROLS FOR HIGHWAY CONSTRUCTION STANDARD DRAWING TC-1 FOR NOTES AND DETAILS.
 - USE TYPE III BARRICADE FOR "ROAD CLOSED" SIGNS.
 - MOUNT DETOUR SIGNS TO BARRICADE WHEN "ROAD CLOSED" AND "DETOUR" SIGNS ARE SHOWN TOGETHER.
 - "ROAD CLOSED" - USE RII-2
 - "DETOUR" - USE M4-10 LEFT AND RIGHT
 - MINIMIZE ROAD CLOSURES - CONSULT WITH CITY OF LITTLE ROCK FOR ROAD CLOSURE TIMING AND DURATION.



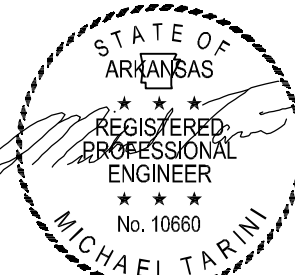
REVISIONS	DATE

CITY OF LITTLE ROCK, ARKANSAS
 WARD 1 01-16-DR-10 6th STREET DRAINAGE
 BYRD STREET MAINTENANCE OF TRAFFIC

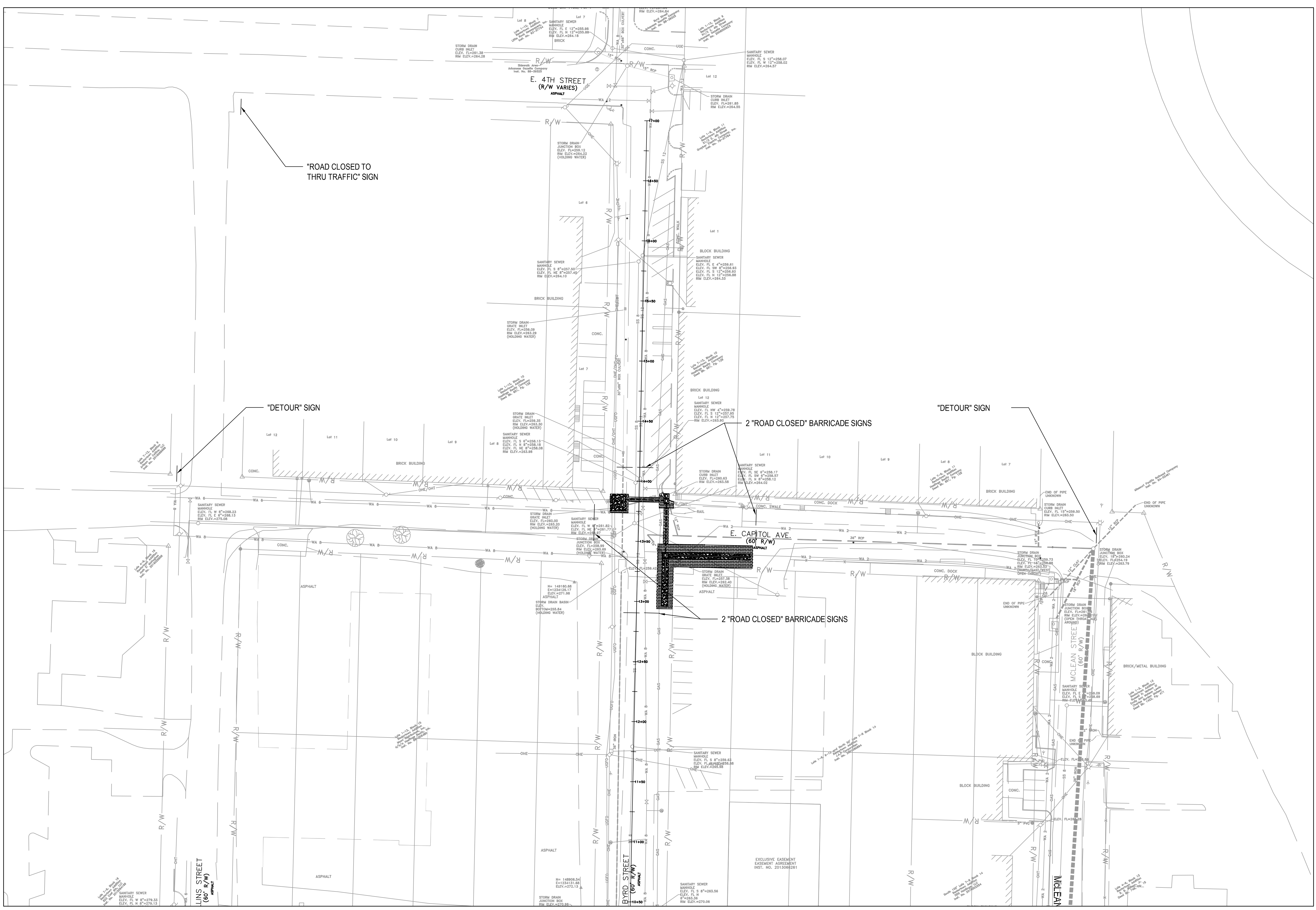
DEPARTMENT OF PUBLIC WORKS
 CIVIL ENGINEERING
 701 W. MARKHAM
 LITTLE ROCK, ARKANSAS 72201

STATE OF ARKANSAS
 REGISTERED PROFESSIONAL ENGINEER
 No. 10660
 MICHAEL TARINI
 10/08/2019



DRAWN BY
 MJT
 DESIGNED
 MJT
 CHECKED
 CGW
 DATE
 10-08-2019
 SCALE
 20 SCALE
 PROJECT NO.
 CLR #17201
 SHEET NO.
 C7



- NOTE:
- REFERENCE ARDOT STANDARD TRAFFIC CONTROLS FOR HIGHWAY CONSTRUCTION STANDARD DRAWING TC-1 FOR NOTES AND DETAILS.
 - USE TYPE III BARRICADE FOR "ROAD CLOSED" SIGNS.
 - MOUNT DETOUR SIGNS TO BARRICADE WHEN "ROAD CLOSED" AND "DETOUR" SIGNS ARE SHOWN TOGETHER.
 - "ROAD CLOSED" - USE RII-2
 - "DETOUR" - USE M4-10 LEFT AND RIGHT
 - "ROAD CLOSED TO THRU TRAFFIC" - USE RII-4
 - SEE SHEET C6 FOR SIGNS THAT ARE TO REMAIN DURING BYRD STREET CLOSURE.

