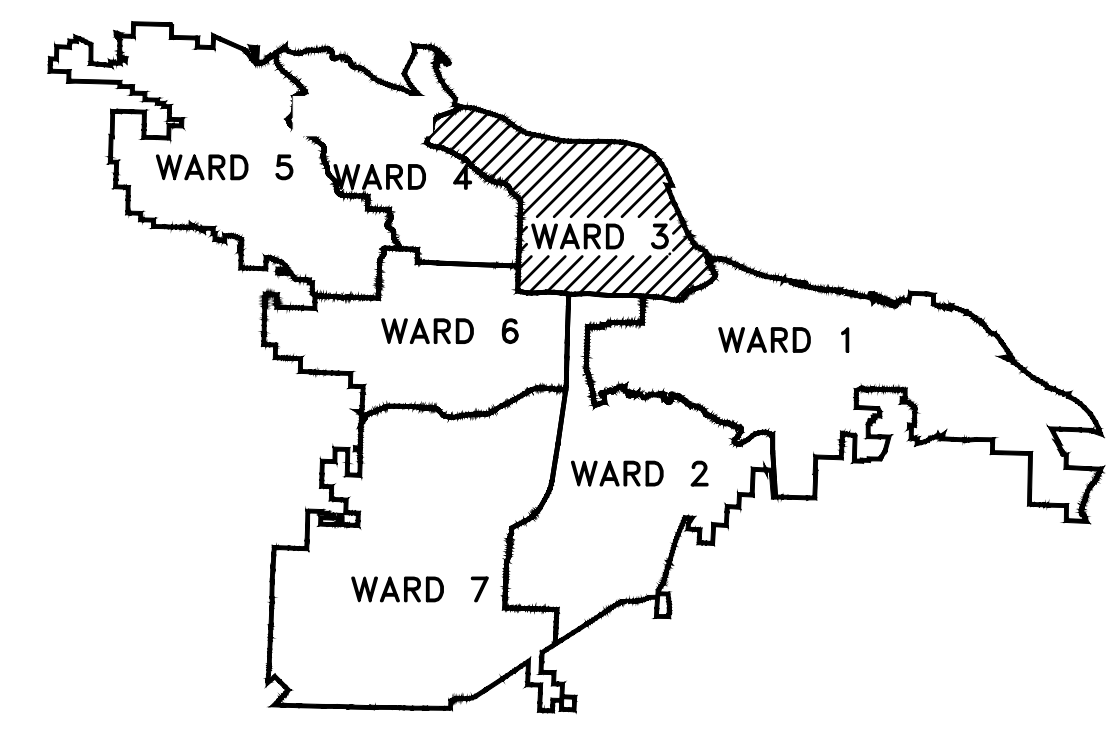
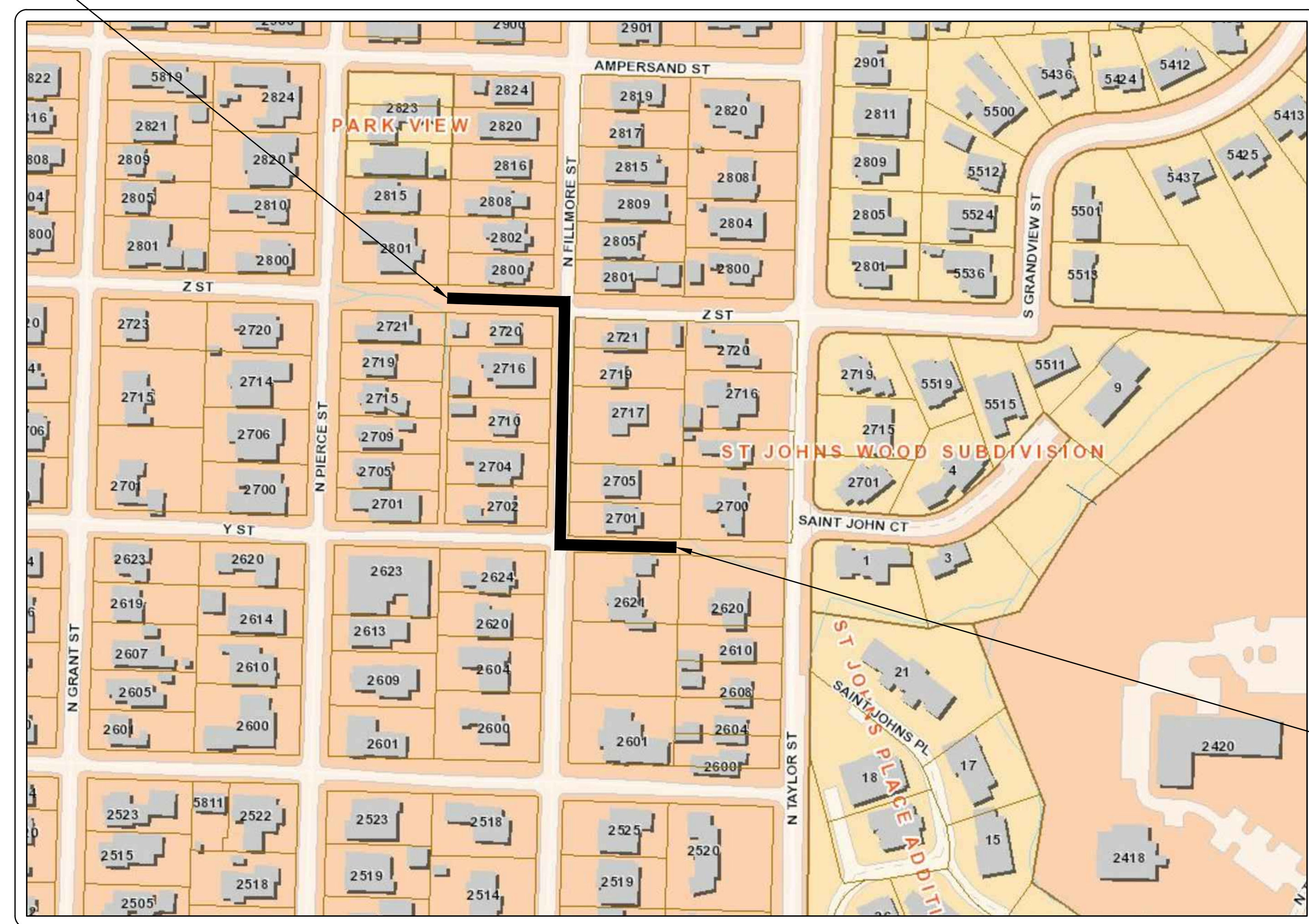
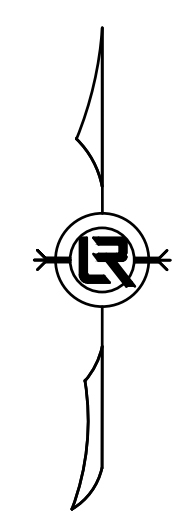


100% SUBMITTAL

CLR PROJECT 03-16-DR-120 FILLMORE STREET DRAINAGE IMPROVEMENTS (Z STREET TO Y STREET)



PROJECT END
STATION 17+00



LOCATION

Sheet List Table	
Sheet Number	Sheet Title
C1	COVER SHEET
C2	LEGEND, QUANTITIES AND DETAILS
C3	TYPICAL SECTION AND DETAILS
C4	P&P SHEET 1
C5	P&P SHEET 2
C6	SUPPLEMENTAL GRADING DETAILS SHEET 1
C7	SUPPLEMENTAL GRADING DETAILS SHEET 2
C8	EROSION CONTROL PH I
C9	EROSION CONTROL PH II
C10	EROSION CONTROL PH III

PROJECT START
STATION 10+00



**2019-2021
BOND PROGRAM**

DEPARTMENT OF PUBLIC WORKS
CIVIL ENGINEERING
701 WEST MARKHAM STREET
LITTLE ROCK, ARKANSAS 72201



Know what's below.
Call before you dig.

10825 Financial Center Parkway, Suite 300
Little Rock, Arkansas 72211
Crafton Tull
engineering | surveying
501.664.3245 | 501.664.6704 | www.craftontull.com



REVISIONS	DATE

CITY OF LITTLE ROCK, ARKANSAS
FILLMORE STREET DRAINAGE
COVER SHEET

DEPARTMENT OF PUBLIC WORKS
CIVIL ENGINEERING
701 W. MARKHAM
LITTLE ROCK, ARKANSAS 72201



DRAWN BY
TH
DESIGNED
MB
CHECKED
BAP
DATE
12-27-2019
SCALE
H: 1"=20'
V: 1"=5'
PROJECT NO.
13-16-DR-120
SHEET NO.
C1

REVISIONS	DATE

CLR PROJECT # 03-16-DR-120			
FILLMORE STREET ROAD & DRAINAGE IMPROVEMENTS			
12/27/2019			
SCHEDULE A			
2.01	SITE PREPARATION	1	L.S.
3.01	UNCLASSIFIED EXCAVATION	95	C.Y.
5.01	TACK COAT	53	GAL
6.01	ACHM SURFACE COURSE	116	TON
7.06	CONCRETE DRIVEWAY (6" THICK), STANDARD FINISH	1422	S.F.
8.03	CONCRETE CURB AND GUTTER (CLASS 3)	336	L.F.
8.16A	DUMPED RIPRAP (GROUTED)	47	C.Y.
9.04	CONCRETE SIDEWALKS	145	S.F.
10.01	JUNCTION BOX	1	EA.
10.02	AREA INLET (PW-6)	1	EA.
10.03	CURB INLET - SPECIAL (PW-10)	1	EA.
10.08	REVERSE CURB INLET - 7.33' x 5.5' BOX	5	EA.
10.07	WING 3' EXTENSION	6	EA.
11.06	REINFORCED CONCRETE HEADWALL	7	C.Y.
13.15C	STORM DRAIN PIPE, 15" SIDE DRAIN	22	L.F.
13.15C	STORM DRAIN PIPE, 15" CROSS DRAIN	59	L.F.
13.18C	STORM DRAIN PIPE, 18" CROSS DRAIN	17	L.F.
13.36C	STORM DRAIN PIPE, 36" SIDE DRAIN	380	L.F.
13.42C	STORM DRAIN PIPE, 42" SIDE DRAIN	183	L.F.
13.42C	STORM DRAIN PIPE, 42" CROSS DRAIN	69	L.F.
14.01	SOLID SODDING (SPECIAL)	407	S.Y.
16.01	MAINTENANCE OF TRAFFIC	1	L.S.
18.01	REMOVE AND REPLACE FENCE	10	L.F.
19.01	CLEAN UP	1	L.S.
23.03	GRANULAR BACKFILL	743	TON
24.02	CHECK DAM (CD)	7	C.Y.
24.09	SEDIMENT BARRIER, BLOCK (SD4)	7	EA.
24.11	SILT FENCE - TYPE A (SFA)	350	L.F.
24.18	PERMANENT GRASSING (TS3)	0.1	AC.
26.10	TRENCH & EXCAVATION SAFETY	1	L.S.
27.10	FULL ASPHALT PAVEMENT MILLING	1047	S.Y.
303.00	AGGREGATE SURFACE COURSE (CLASS D-2)	34	TON
632.02	CONCRETE ARMORED SLOPE	10	S.Y.

SCHEDULE B			
SS-1	8" CLASS 50 DUCTILE IRON PIPE	31	L.F.
SS-2	GRANULAR BACKFILL (CLASS 7)	15	TON
SS-3	CONCRETE (8" THICK), STREET REPAIR	2	C.Y.
SS-4	CONNECT TO EXISTING SEWER LINE	1	L.S.
SS-5	CONNECT TO EXISTING MANHOLE	1	L.S.
SS-6	TESTING	1	L.S.

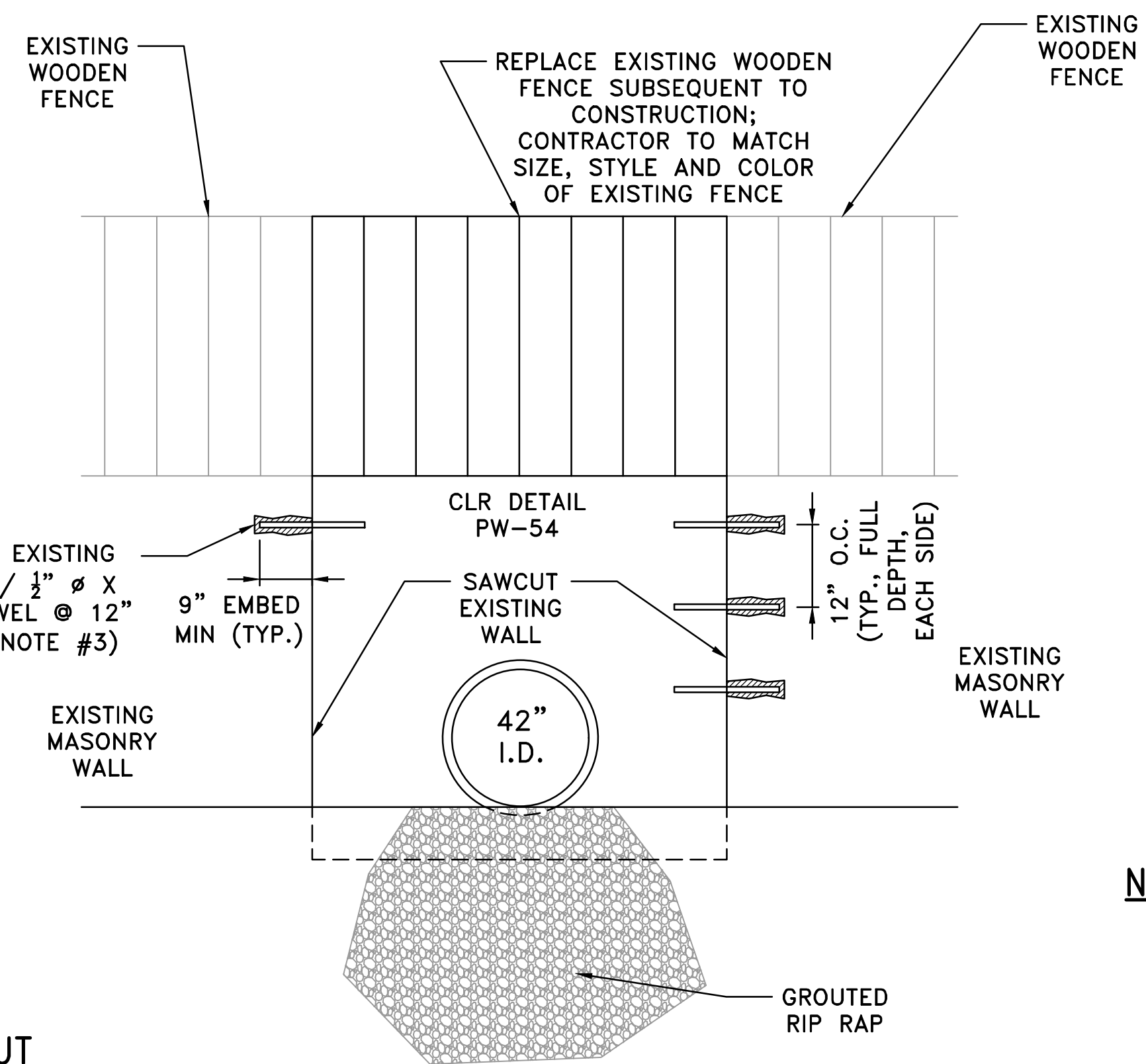
EXISTING	PROPOSED		
IRON ROD	○ IR	PROPOSED CONTOUR	
PK NAIL	○ PK	PROPOSED SPOT ELEVATION	
R.R. SPIKE	○ RR(Sp)	PROPOSED SPOT CURB ELEVATION	
CONC. MONUMENT	□ CM	STORM SEWER - PIPE	
WATER VALVE	⊗ WV	STORM SEWER - MITERED END SECTION	
WATER METER	□ WM	STORM SEWER - GRATE INLET	
FIRE HYDRANT	∩ FH	STORM SEWER - JUNCTION BOX	
GAS METER	□ GM	STORM SEWER - FLARED END SECTION	
GAS VALVE	⊗ GV	STORM SEWER - HEADWALL	
CLEAN-OUT	○ CO	STORM SEWER - SINGLE WING	
GUARD POST (BOLLARD)	● GP	STORM SEWER - DOUBLE WING	
SIGN POST	+	STORM SEWER - AREA INLET	
BENCHMARK	⊕	GRADE BREAK LINE	
STORM SEWER MANHOLE	⊙	HIGH POINT	HP
SANITARY SEWER MANHOLE	⊙ S	LOW POINT	LP
TELEPHONE MANHOLE	⊙ T	CUT LINE	C
ELECTRIC MANHOLE	⊙ E	FILL LINE	F
TELEPHONE BOX	⊞	SANITARY SEWER PIPE	SAN
ELECTRIC BOX	⊞ E	SANITARY SEWER MANHOLE	⊙ S
CABLE BOX	⊞ C	PROPOSED CURB	
UTILITY POLE	⊞ U	PROPOSED CONCRETE	
GUY WIRE	⊞ G	CONSTRUCTION - ENTRANCE/EXIT	
LIGHT POLE	⊞ L	CHECK DAM	
POST OR POLE (TYPE AS NOTED)	⊞ P	DIVERSION BERM	
MAILBOX	⊞ M	DOWNDRAIN STRUCTURE - TEMPORARY	
DECIDUOUS TREE	⊞ D	ROCK DAM	
EVERGREEN/CONIFEROUS TREE	⊞ E	SEDIMENT BARRIER - SILT FENCE	
BUSH	⊞ B	SEDIMENT BARRIER - GRAVEL RING	
PROPERTY LINE	— X — X — X —	SEDIMENT BARRIER - BLOCK & GRAVEL	
SETBACK LINE	— OE — OE —	SEDIMENT BARRIER - BLOCK	
EASEMENT LINE	— OT — OT —	TEMPORARY SEDIMENT BASIN	
CURB	— OC — OC —	SILT FENCE - TYPE A	
FENCE	— UGT —	SILT FENCE - TYPE B	
OVERHEAD ELECTRIC	— UGE —	SILT FENCE - TYPE C	
OVERHEAD TELEPHONE	— UGC —	STORM DRAIN OUTLET PROTECTION	
OVERHEAD CABLE	— 8"W —	SURFACE ROUGHENING	
UNDERGROUND TELEPHONE	— 8"SS —	DISTURBED AREA STABILIZATION - TEMPORARY STABILIZATION	
UNDERGROUND ELECTRIC	— 4"G —	DISTURBED AREA STABILIZATION - TEMPORARY GRASSING	
UNDERGROUND CABLE	— 24" CMP/RCP/DIP —	DISTURBED AREA STABILIZATION - PERMANENT GRASSING	
WATER LINE	— 650 —	MATTING/BANKETS	
SEWER LINE			
GAS LINE			
STORM SEWER/CULVERT			
EDGE OF WOODS			
CONTOUR LINE			

CITY OF LITTLE ROCK, ARKANSAS
FILLMORE STREET DRAINAGE
LEGEND, QUANTITIES AND DETAILS

DEPARTMENT OF PUBLIC WORKS
CIVIL ENGINEERING
701 W. MARKHAM
LITTLE ROCK, ARKANSAS 72201



DRAWN BY	TH
DESIGNED	MB
CHECKED	BAP
DATE	12-27-2019
SCALE	H: 1"=20' V: 1"=5'
PROJECT NO.	13-16-DR-120
SHEET NO.	C2



MASONRY WALL CUT
NTS

NOTES:

1. REFER TO CITY OF LITTLE ROCK PUBLIC WORKS DETAIL PW-54 FOR RETAINING WALL REINFORCING.
2. REFER TO CITY OF LITTLE ROCK PUBLIC WORKS DETAIL PW-60 FOR GROUTED RIP RAP SPECIFICATIONS.
3. EPOXY TO BE MANUFACTURED FOR MASONRY WALL EMBEDMENT BY HILTI OR APPROVED EQUAL.

100% SUBMITTAL

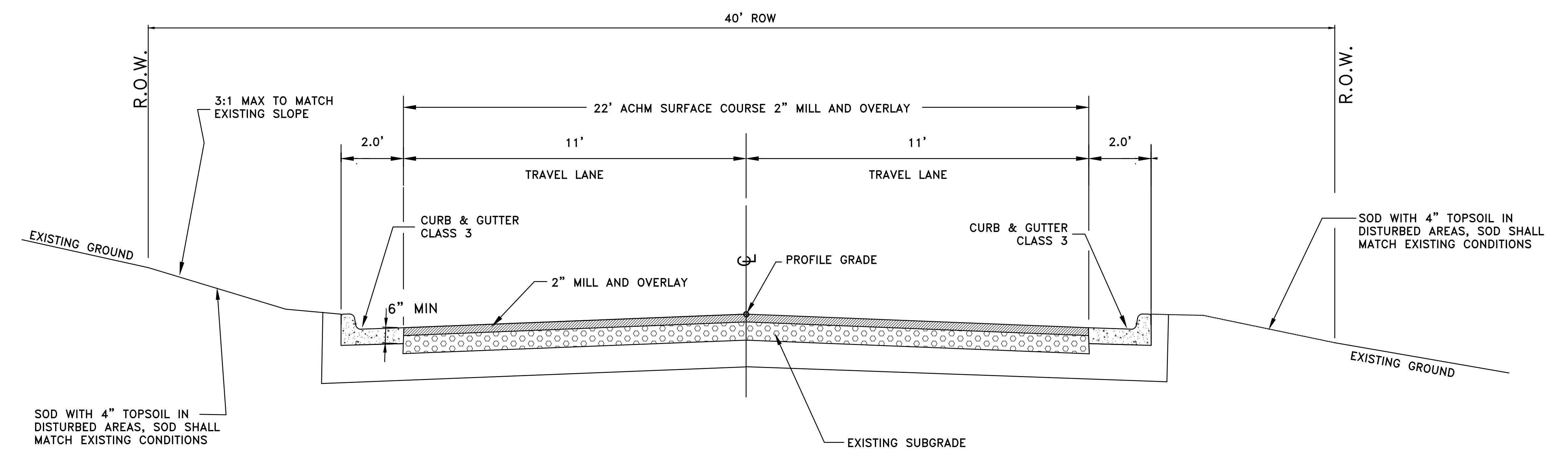
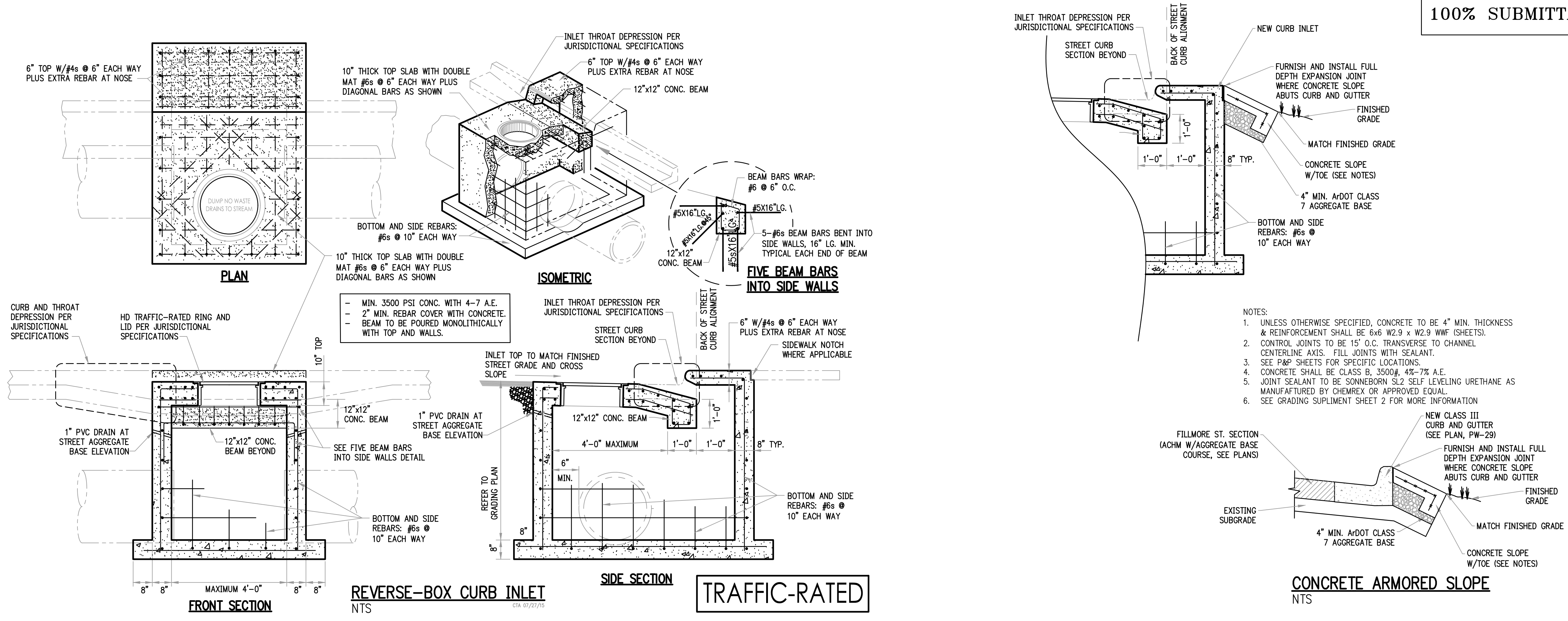
REVISIONS	DATE

CITY OF LITTLE ROCK, ARKANSAS
 FILLMORE STREET DRAINAGE
 TYPICAL SECTION AND DETAILS

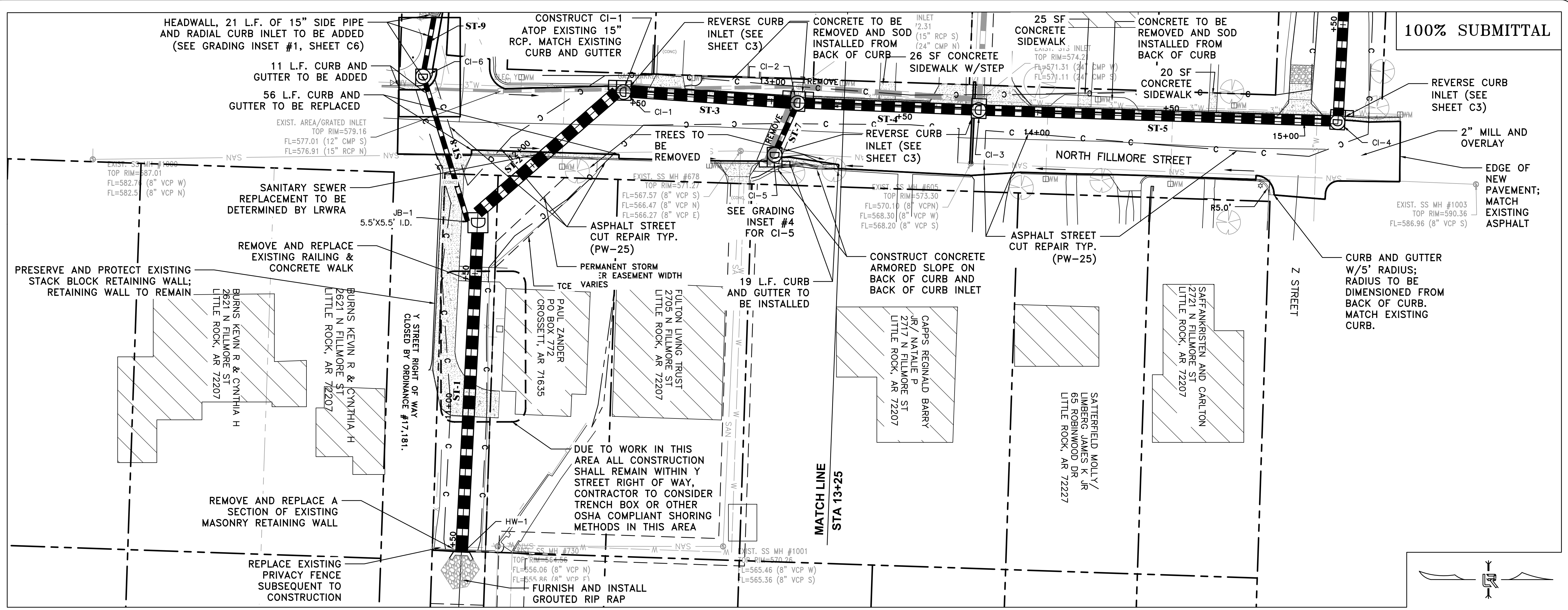
DEPARTMENT OF PUBLIC WORKS
 CIVIL ENGINEERING
 701 W. MARKHAM
 LITTLE ROCK, ARKANSAS 72201



DRAWN BY	TH
DESIGNED	MB
CHECKED	MB
BAP	DATE
12-27-2019	SCALE
H: 1"=20'	V: 1"=5'
PROJECT NO.	13-16-DR-120
SHEET NO.	C3



TYPICAL SECTION - FILLMORE STREET



100% SUBMITTAL

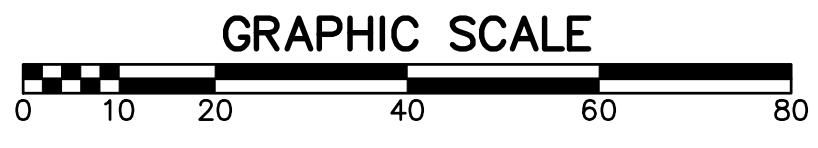
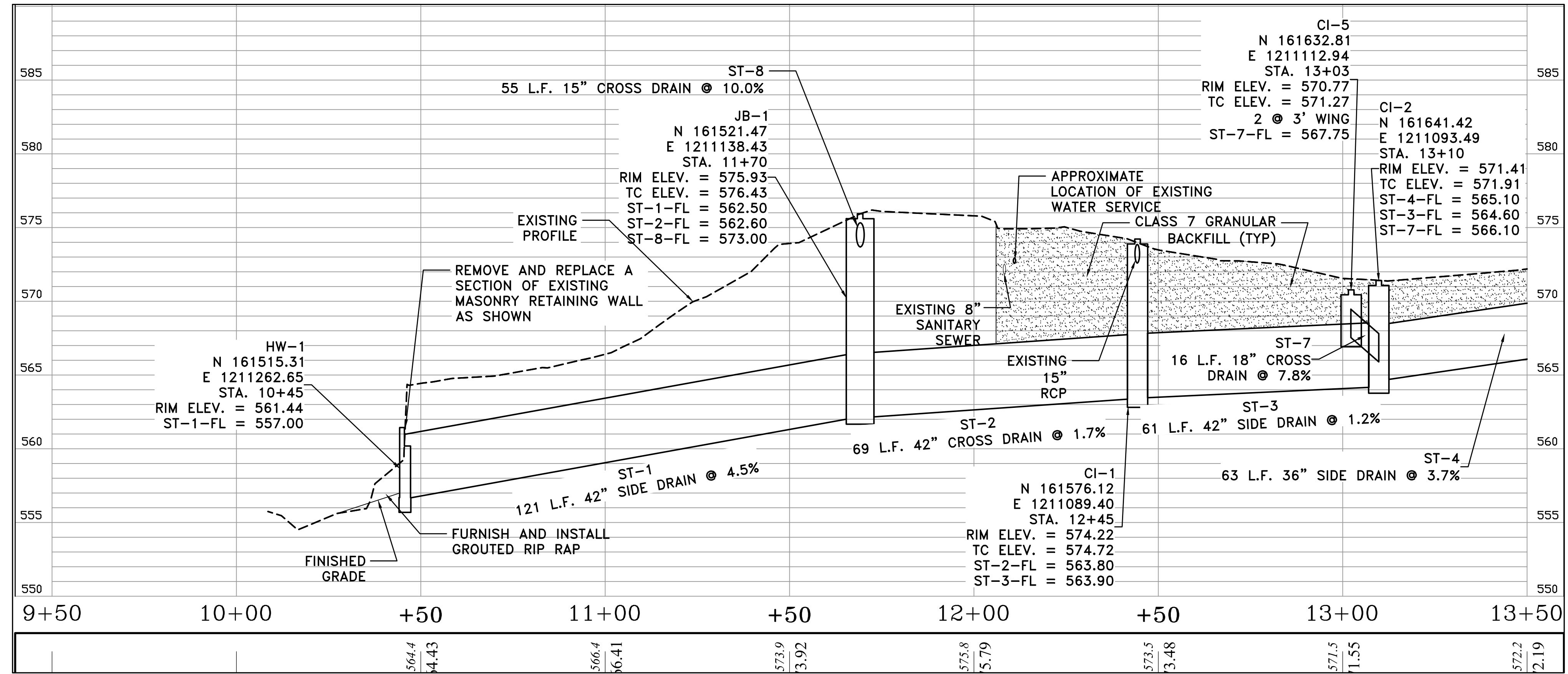
REVISIONS DATE

CITY OF LITTLE ROCK, ARKANSAS
 FILLMORE STREET DRAINAGE
 P&P SHEET 1

DEPARTMENT OF PUBLIC WORKS
 CIVIL ENGINEERING
 701 W. MARKHAM
 LITTLE ROCK, ARKANSAS 72201

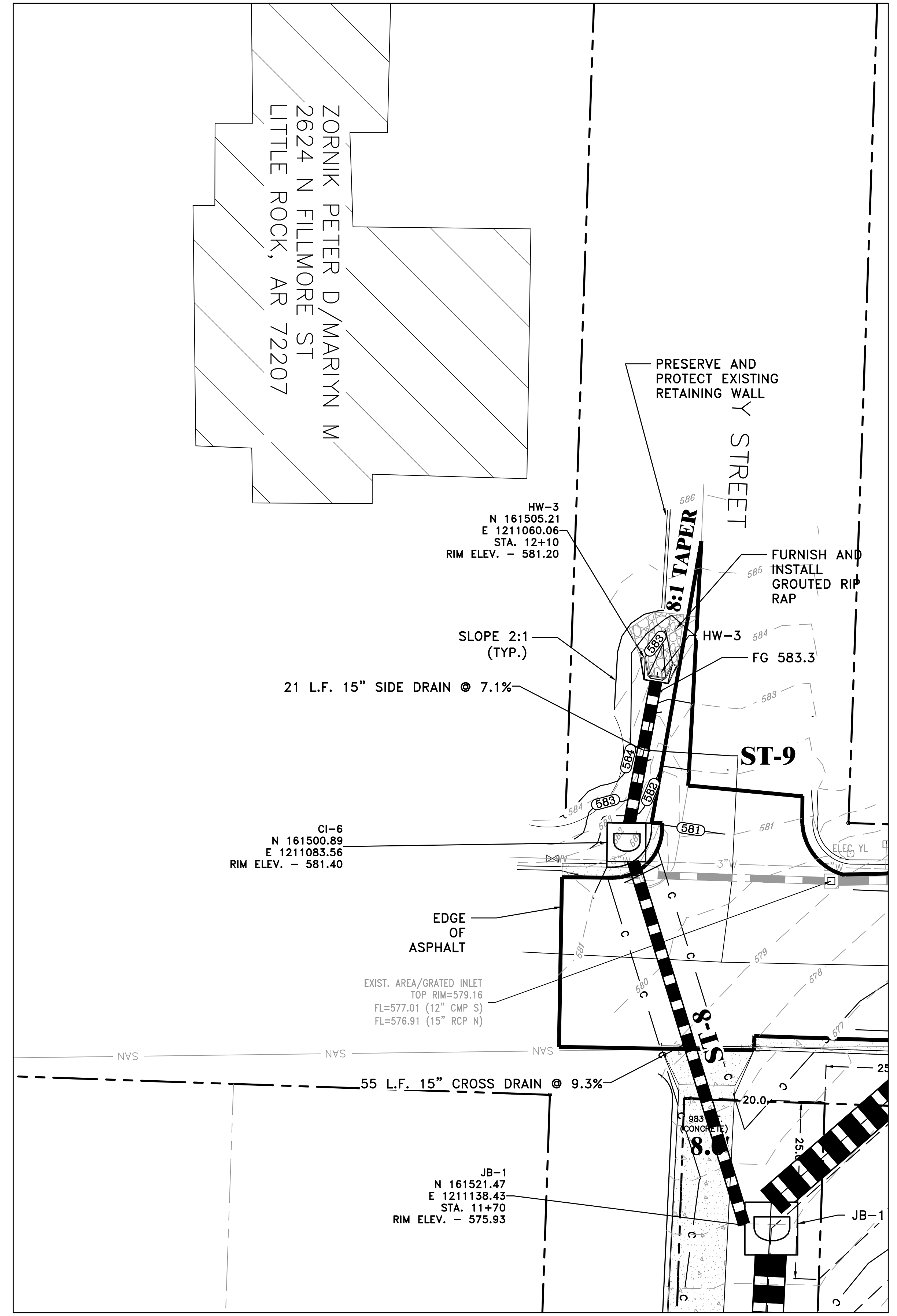


DRAWN BY
 TH
 DESIGNED
 MB
 CHECKED
 BAP
 DATE
 12-27-2019
 SCALE
 H: 1"=20'
 V: 1"=5'
 PROJECT NO.
 13-16-DR-120
 SHEET NO.
 C4

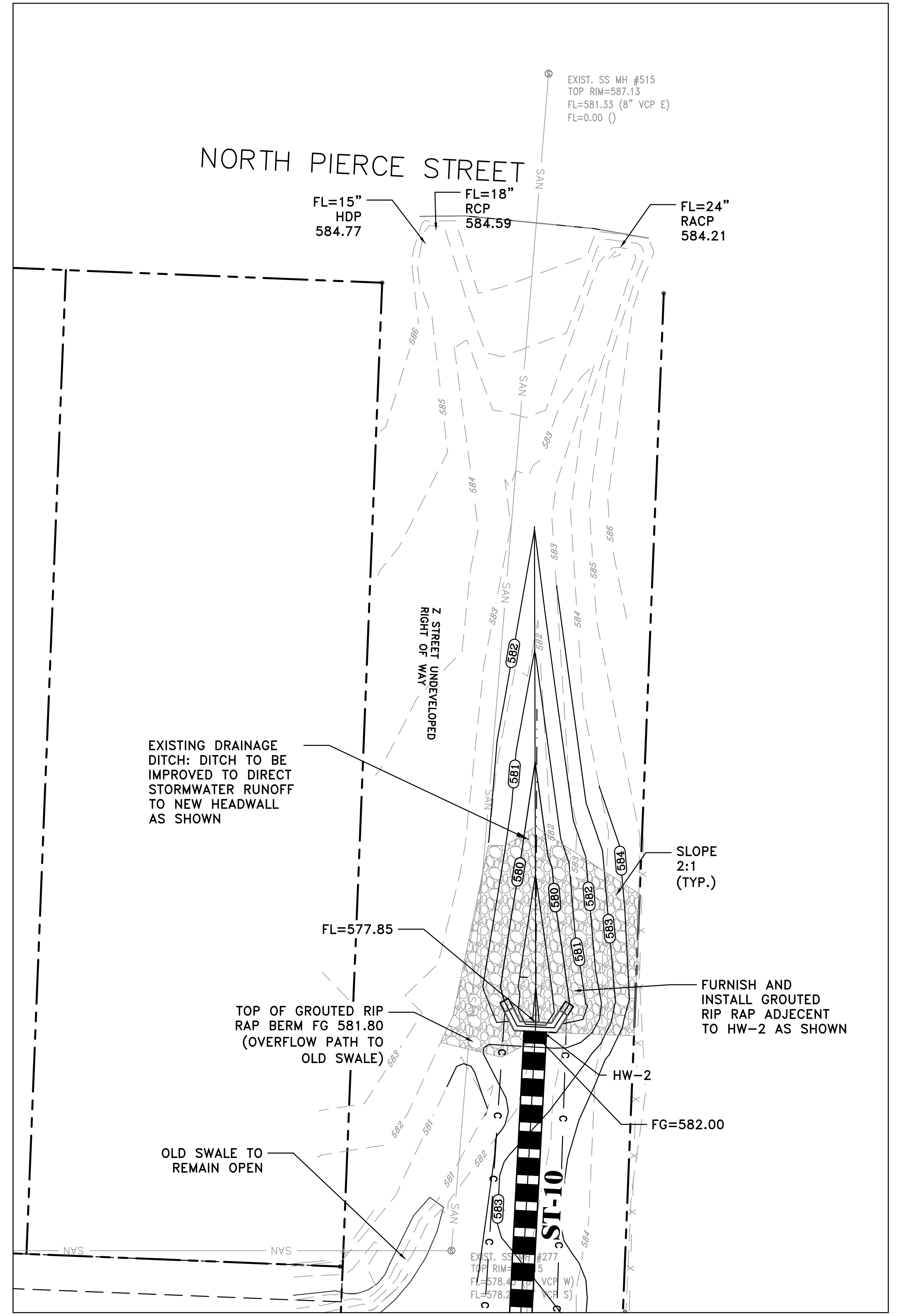


100% SUBMITTAL

REVISIONS	DATE



GRADING INSET #1: SCALE: 1"=10'



GRADING INSET #2: SCALE: 1"=10'

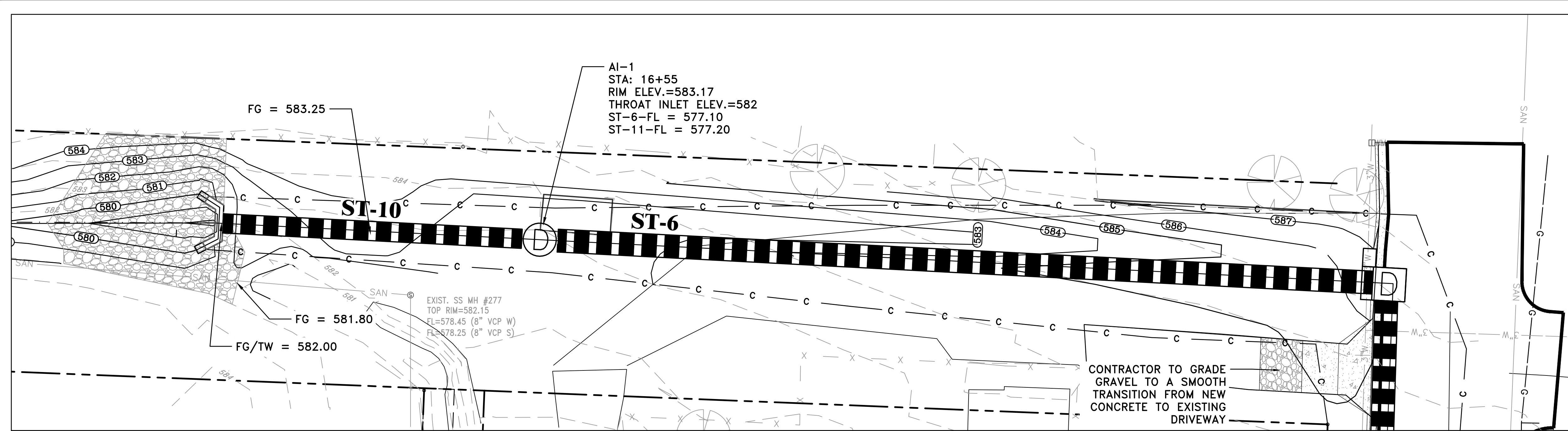
CITY OF LITTLE ROCK, ARKANSAS
 FILLMORE STREET DRAINAGE
 SUPPLEMENTAL GRADING DETAILS SHEET 1

DEPARTMENT OF PUBLIC WORKS
 CIVIL ENGINEERING
 701 W. MARKHAM
 LITTLE ROCK, ARKANSAS 72201



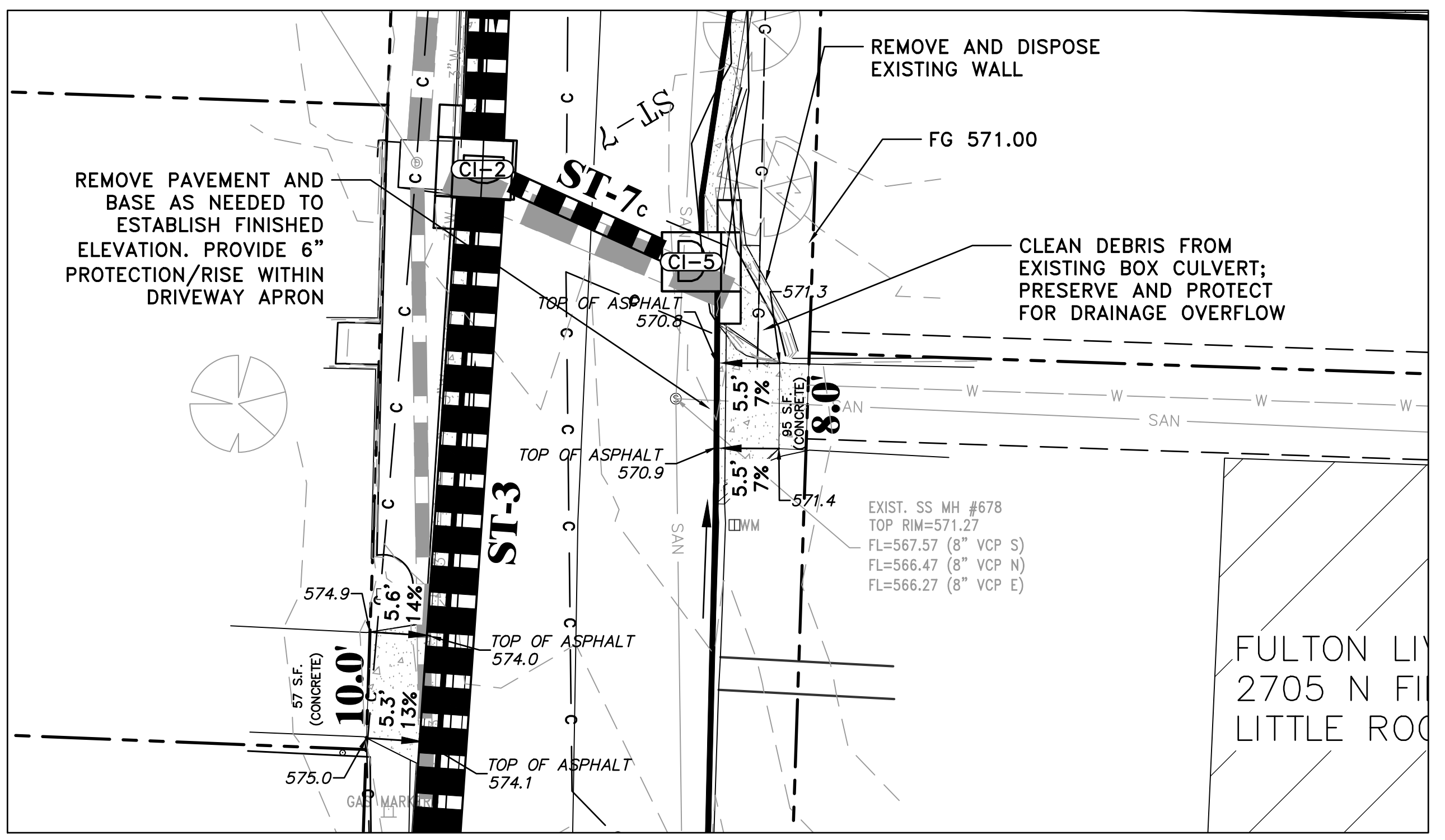
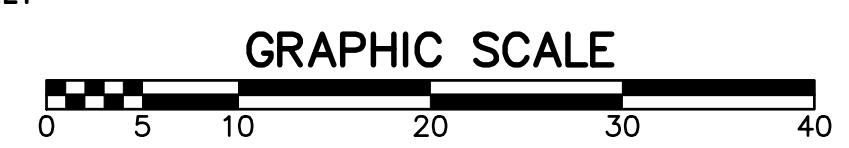
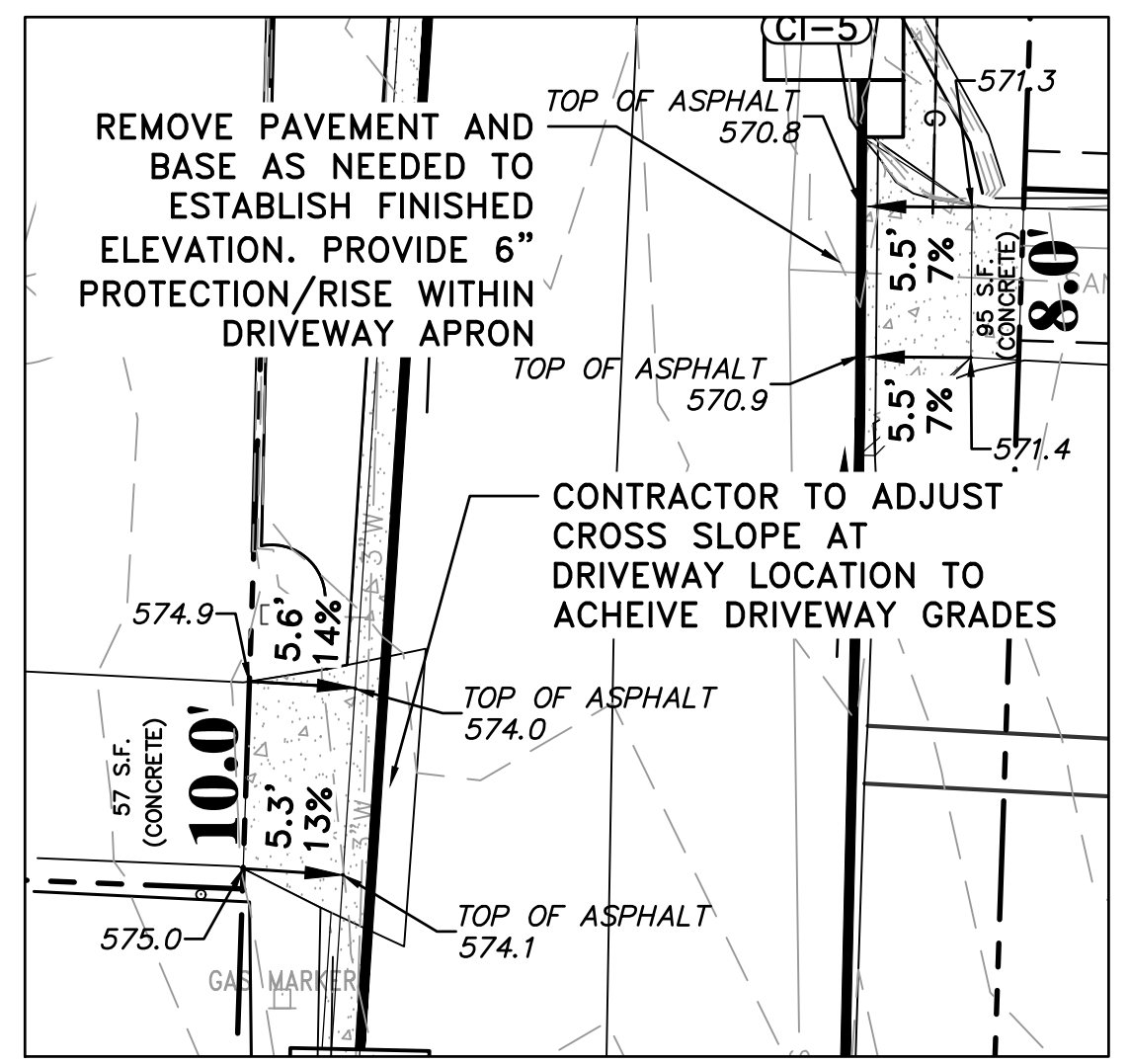
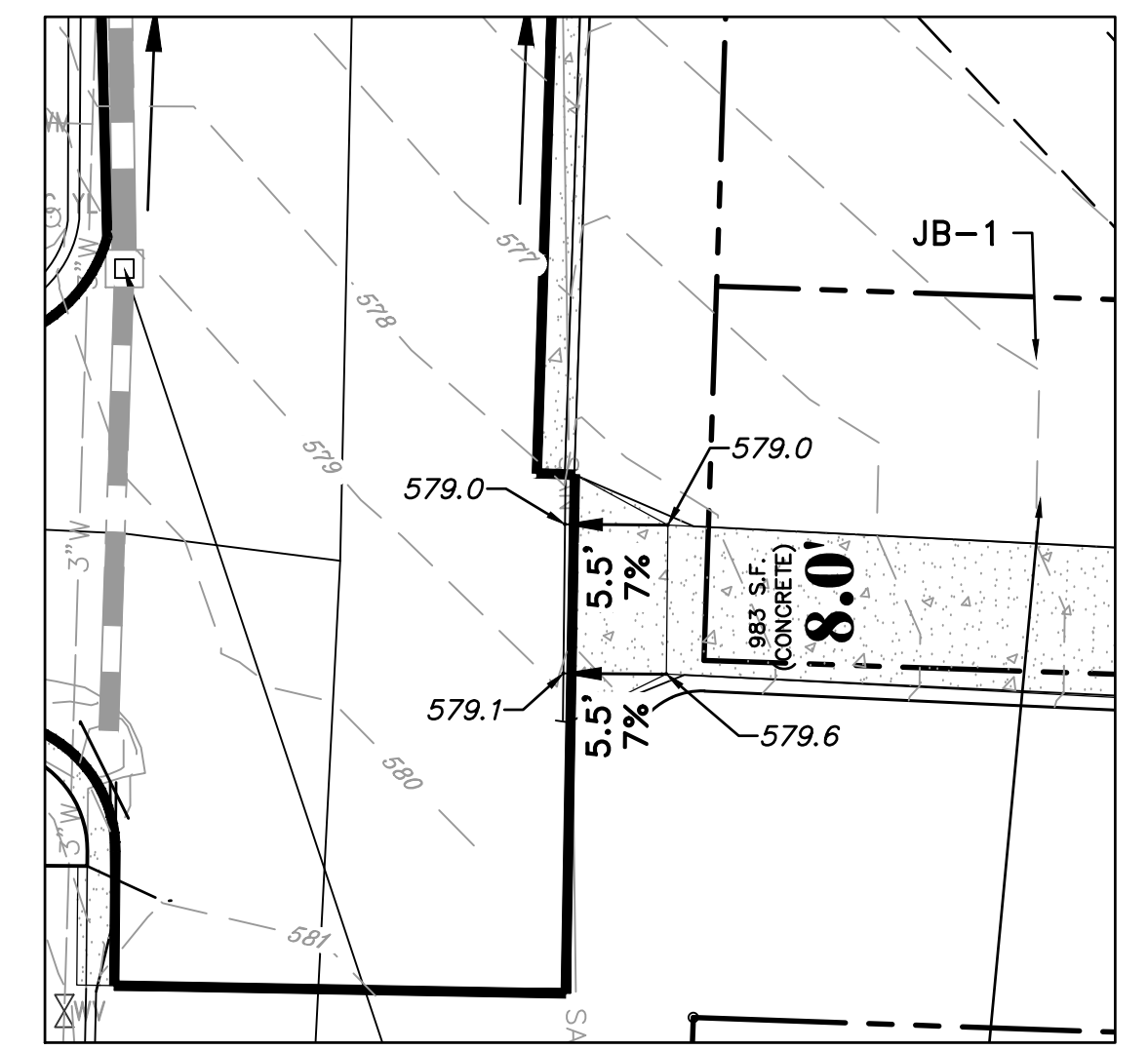
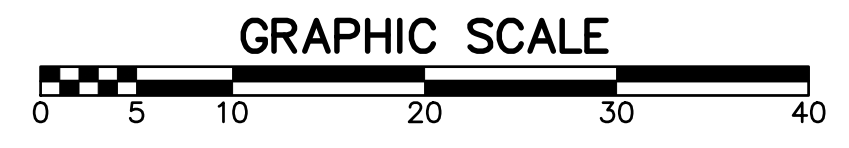
DRAWN BY
 TH
 DESIGNED
 MB
 CHECKED
 BAP
 DATE
 12-27-2019
 SCALE
 H: 1"=20'
 V: 1"=5'
 PROJECT NO.
 13-16-DR-120
 SHEET NO.
 C6

REVISIONS	DATE

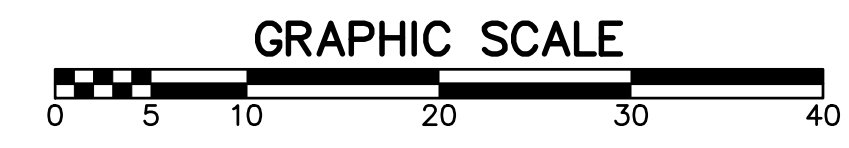


100% SUBMITTAL

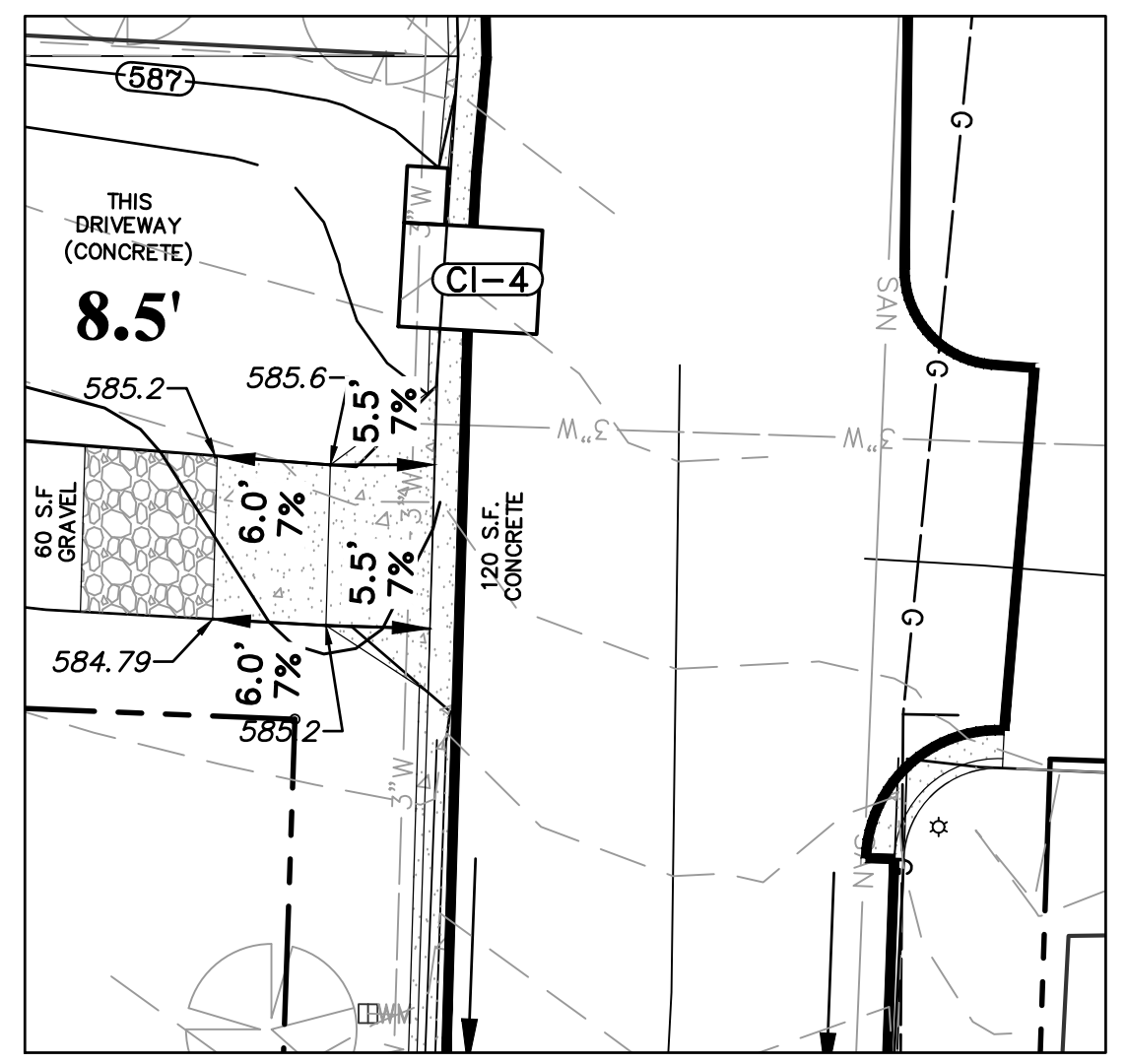
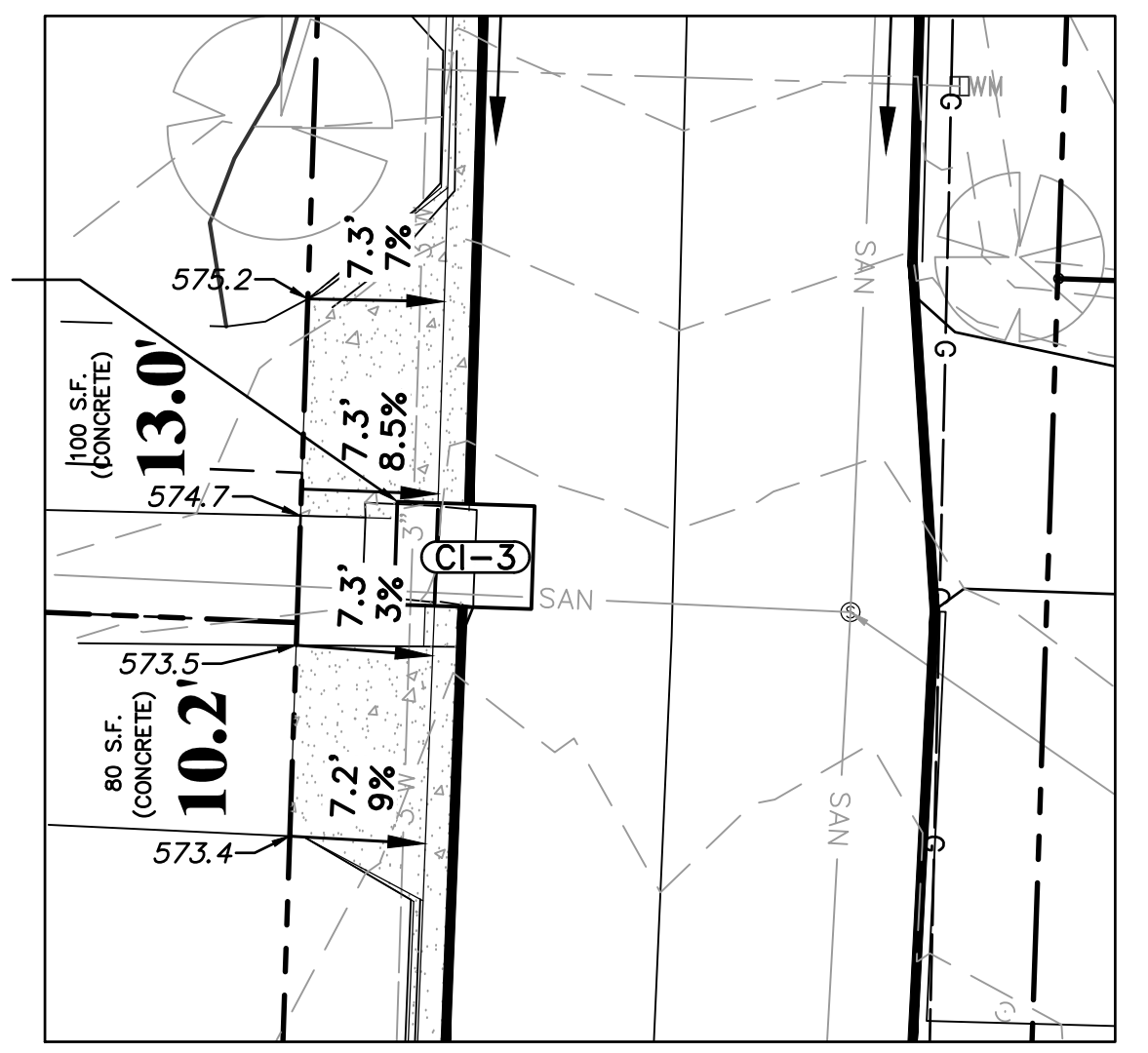
GRADING INSET #3: SCALE: 1"=10'



GRADING INSET #4: SCALE: 1"=10'



CONTRACTOR TO SLOPE SIDES OF THROAT INLET TO ACCOMMODATE GRADE CHANGE AT DRIVEWAY TRANSITION



CITY OF LITTLE ROCK, ARKANSAS
FILLMORE STREET DRAINAGE
SUPPLEMENTAL GRADING DETAILS SHEET 2

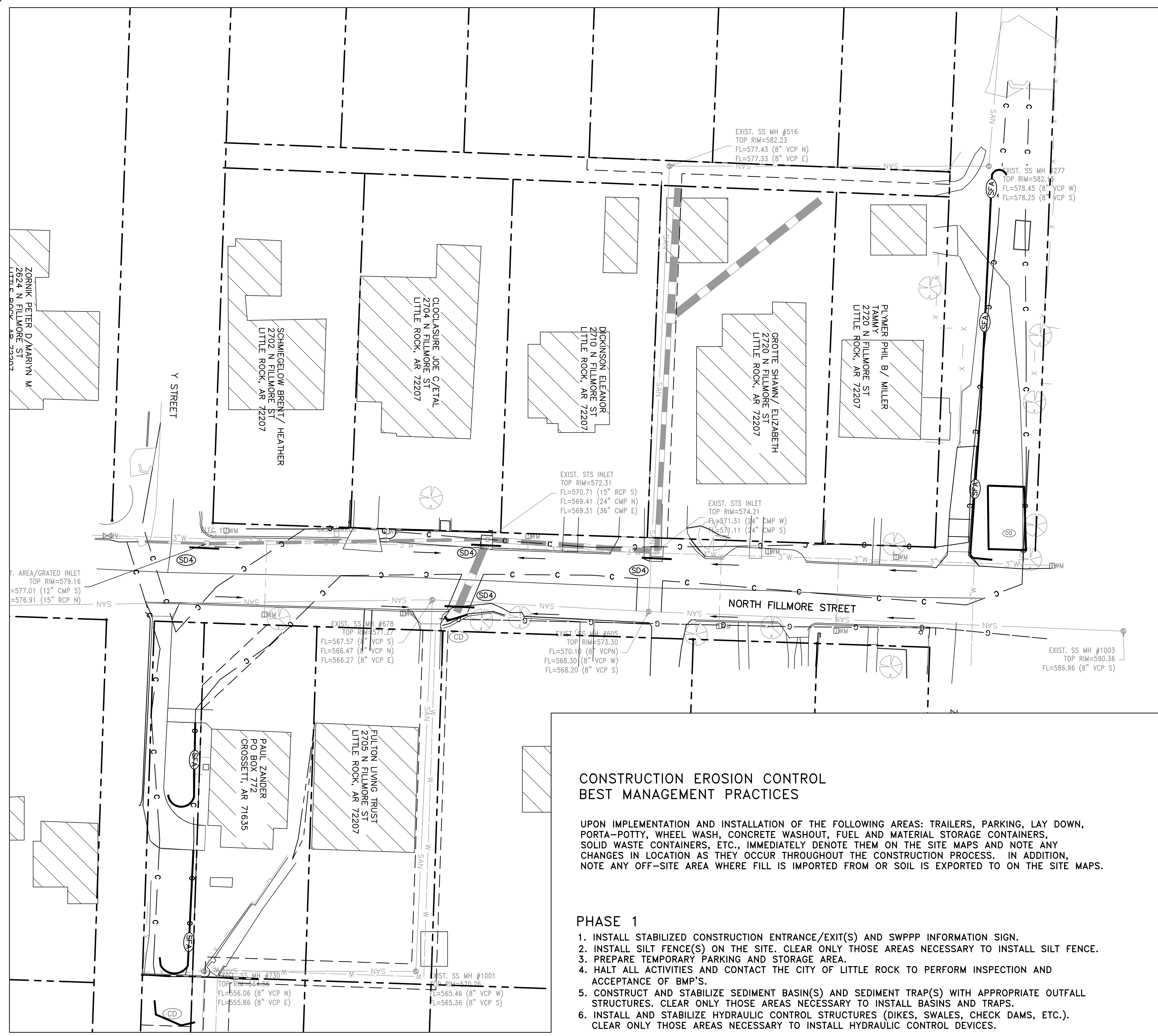
DEPARTMENT OF PUBLIC WORKS
CIVIL ENGINEERING
701 W. MARKHAM
LITTLE ROCK, ARKANSAS 72201



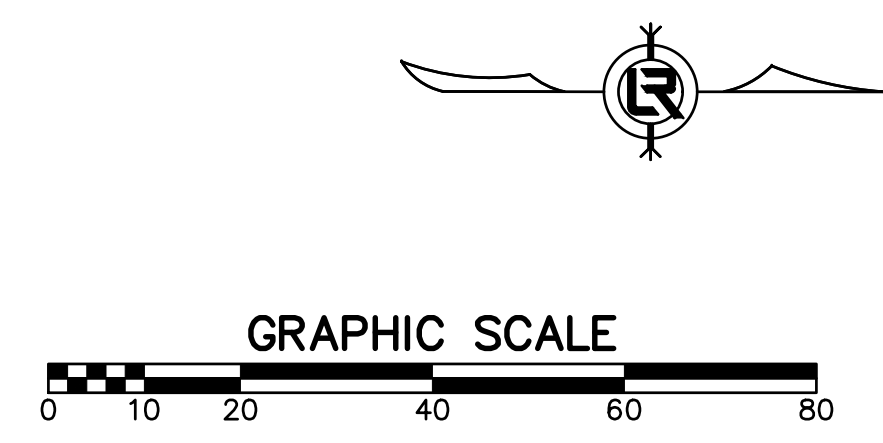
DRAWN BY
TH
DESIGNED
MB
CHECKED
BAP
DATE
12-27-2019
SCALE
H: 1"=20'
V: 1"=5'
PROJECT NO.
13-16-DR-120
SHEET NO.
C7

100% SUBMITTAL

REVISIONS DATE



CONSTRUCTION - ENTRANCE/EXIT	(CO)
CHECK DAM	(CD)
DIVERSION BERM	(DI)
DOWNDRAIN STRUCTURE - TEMPORARY	(DN)
ROCK DAM	(RD)
SEDIMENT BARRIER - SILT FENCE	(SD1)
SEDIMENT BARRIER - GRAVEL RING	(SD2)
SEDIMENT BARRIER - BLOCK & GRAVEL	(SD3)
SEDIMENT BARRIER - BLOCK	(SD4)
TEMPORARY SEDIMENT BASIN	(SB1)
SILT FENCE - TYPE A	(SFA)
SILT FENCE - TYPE B	(SFB)
SILT FENCE - TYPE C	(SFC)
STORM DRAIN OUTLET PROTECTION	(ST)
SURFACE ROUGHENING	(SU)
DISTURBED AREA STABILIZATION - TEMPORARY STABILIZATION	(TS1)
DISTURBED AREA STABILIZATION - TEMPORARY GRASSING	(TS2)
DISTURBED AREA STABILIZATION - PERMANENT GRASSING	(TS3)
MATTING/BLANKETS	(Mb)



CONSTRUCTION EROSION CONTROL BEST MANAGEMENT PRACTICES

UPON IMPLEMENTATION AND INSTALLATION OF THE FOLLOWING AREAS: TRAILERS, PARKING, LAY DOWN, PORTA-POTTY, WHEEL WASH, CONCRETE WASHOUT, FUEL AND MATERIAL STORAGE CONTAINERS, SOLID WASTE CONTAINERS, ETC., IMMEDIATELY DENOTE THEM ON THE SITE MAPS AND NOTE ANY CHANGES IN LOCATION AS THEY OCCUR THROUGHOUT THE CONSTRUCTION PROCESS. IN ADDITION, NOTE ANY OFF-SITE AREA WHERE FILL IS IMPORTED FROM OR SOIL IS EXPORTED TO ON THE SITE MAPS.

PHASE 1

1. INSTALL STABILIZED CONSTRUCTION ENTRANCE/EXIT(S) AND SWPPP INFORMATION SIGN.
2. INSTALL SILT FENCE(S) ON THE SITE. CLEAR ONLY THOSE AREAS NECESSARY TO INSTALL SILT FENCE.
3. PREPARE TEMPORARY PARKING AND STORAGE AREA.
4. HALT ALL ACTIVITIES AND CONTACT THE CITY OF LITTLE ROCK TO PERFORM INSPECTION AND ACCEPTANCE OF BMP'S.
5. CONSTRUCT AND STABILIZE SEDIMENT BASIN(S) AND SEDIMENT TRAP(S) WITH APPROPRIATE OUTFALL STRUCTURES. CLEAR ONLY THOSE AREAS NECESSARY TO INSTALL BASINS AND TRAPS.
6. INSTALL AND STABILIZE HYDRAULIC CONTROL STRUCTURES (DIKES, SWALES, CHECK DAMS, ETC.). CLEAR ONLY THOSE AREAS NECESSARY TO INSTALL HYDRAULIC CONTROL DEVICES.

CITY OF LITTLE ROCK, ARKANSAS
FILLMORE STREET DRAINAGE
EROSION CONTROL PH I

DEPARTMENT OF PUBLIC WORKS
CIVIL ENGINEERING
701 W. MARKHAM
LITTLE ROCK, ARKANSAS 72201



DRAWN BY TH
DESIGNED MB
CHECKED BAP
DATE 12-27-2019
SCALE H: 1"=20'
V: 1"=5'
PROJECT NO. 13-16-DR-120
SHEET NO. C8

100% SUBMITTAL

REVISIONS DATE

CITY OF LITTLE ROCK, ARKANSAS
 FILLMORE STREET DRAINAGE
 EROSION CONTROL PH II

DEPARTMENT OF PUBLIC WORKS
 CIVIL ENGINEERING
 701 W. MARKHAM
 LITTLE ROCK, ARKANSAS 72201

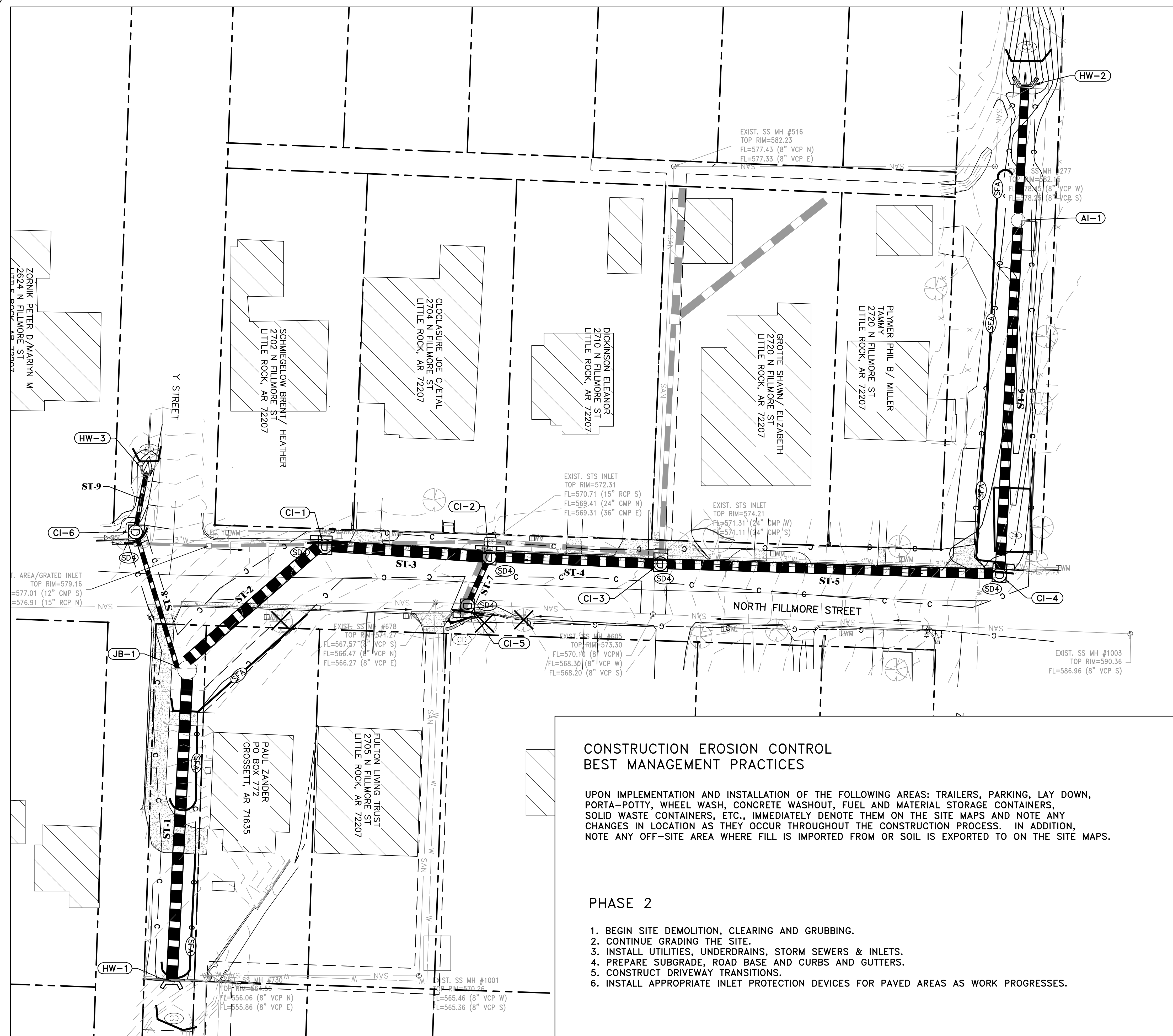
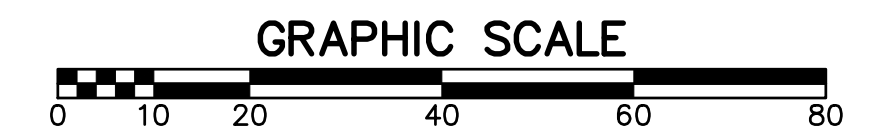
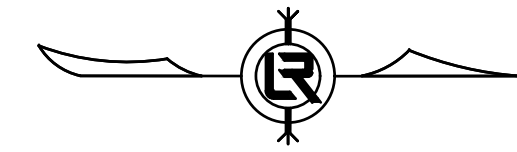


DRAWN BY

TH
 DESIGNED
 MB
 CHECKED
 BAP
 DATE
 12-27-2019
 SCALE
 H: 1"=20'
 V: 1"=5'
 PROJECT NO.
 13-16-DR-120
 SHEET NO.

C9

CONSTRUCTION - ENTRANCE/EXIT	(CO)
CHECK DAM	(CD)
DIVERSION BERM	(DI)
DOWNDRAIN STRUCTURE - TEMPORARY	(DN)
ROCK DAM	(RD)
SEDIMENT BARRIER - SILT FENCE	(SD1)
SEDIMENT BARRIER - GRAVEL RING	(SD2)
SEDIMENT BARRIER - BLOCK & GRAVEL	(SD3)
SEDIMENT BARRIER - BLOCK	(SD4)
TEMPORARY SEDIMENT BASIN	(SB1)
SILT FENCE - TYPE A	(SFA)
SILT FENCE - TYPE B	(SFB)
SILT FENCE - TYPE C	(SFC)
STORM DRAIN OUTLET PROTECTION	(ST)
SURFACE ROUGHENING	(SU)
DISTURBED AREA STABILIZATION - TEMPORARY STABILIZATION	(TS1)
DISTURBED AREA STABILIZATION - TEMPORARY GRASSING	(TS2)
DISTURBED AREA STABILIZATION - PERMANENT GRASSING	(TS3)
MATTING/BLANKETS	(MB)



**CONSTRUCTION EROSION CONTROL
 BEST MANAGEMENT PRACTICES**

UPON IMPLEMENTATION AND INSTALLATION OF THE FOLLOWING AREAS: TRAILERS, PARKING, LAY DOWN, PORTA-POTTY, WHEEL WASH, CONCRETE WASHOUT, FUEL AND MATERIAL STORAGE CONTAINERS, SOLID WASTE CONTAINERS, ETC., IMMEDIATELY DENOTE THEM ON THE SITE MAPS AND NOTE ANY CHANGES IN LOCATION AS THEY OCCUR THROUGHOUT THE CONSTRUCTION PROCESS. IN ADDITION, NOTE ANY OFF-SITE AREA WHERE FILL IS IMPORTED FROM OR SOIL IS EXPORTED TO ON THE SITE MAPS.

PHASE 2

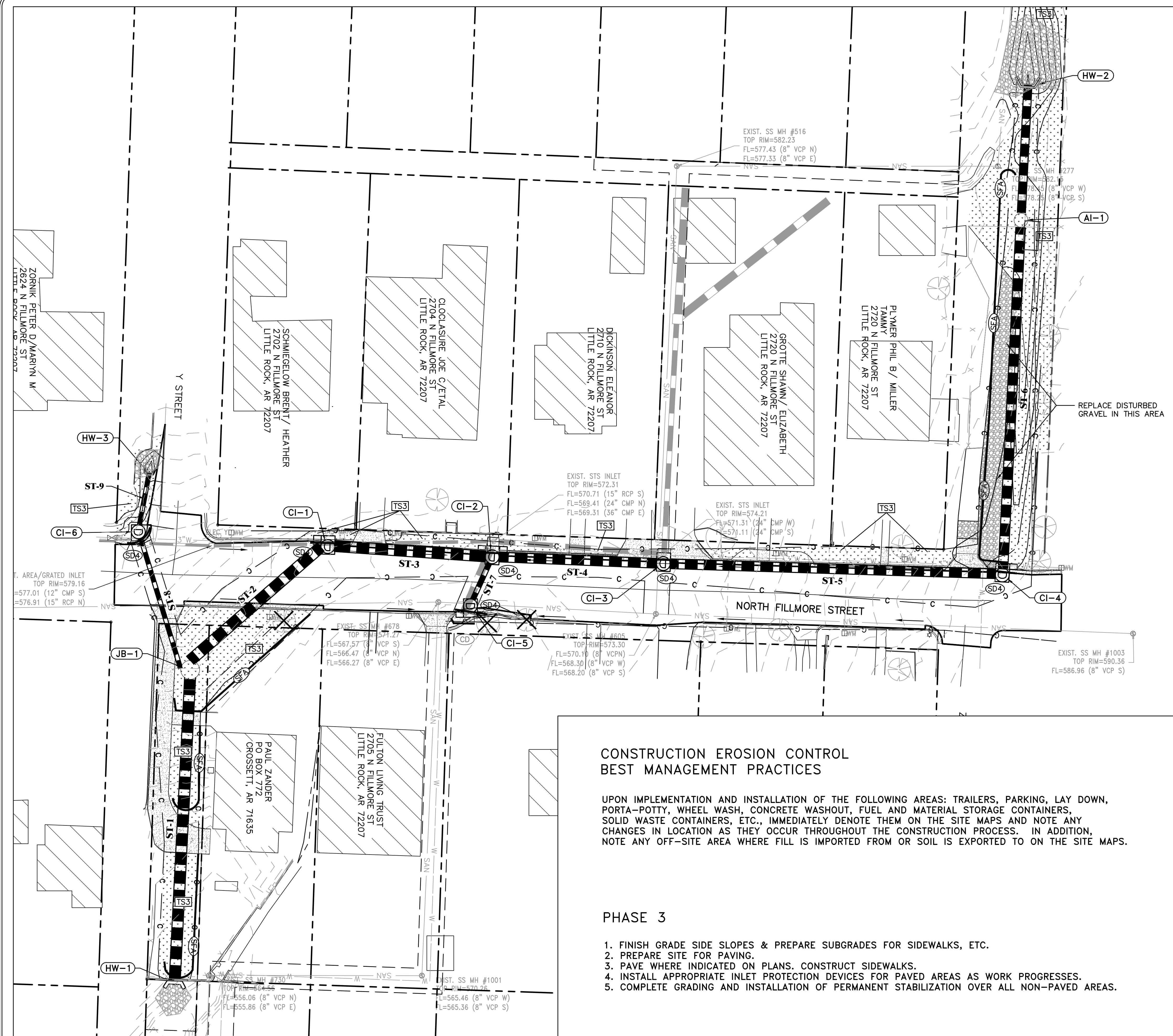
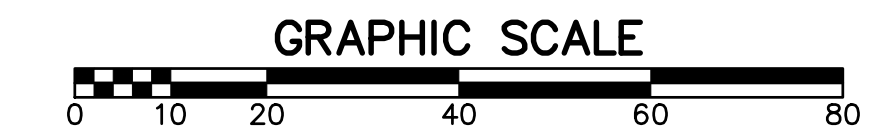
1. BEGIN SITE DEMOLITION, CLEARING AND GRUBBING.
2. CONTINUE GRADING THE SITE.
3. INSTALL UTILITIES, UNDERDRAINS, STORM SEWERS & INLETS.
4. PREPARE SUBGRADE, ROAD BASE AND CURBS AND GUTTERS.
5. CONSTRUCT DRIVEWAY TRANSITIONS.
6. INSTALL APPROPRIATE INLET PROTECTION DEVICES FOR PAVED AREAS AS WORK PROGRESSES.

REVISIONS	DATE

CITY OF LITTLE ROCK, ARKANSAS
 FILLMORE STREET DRAINAGE

EROSION CONTROL PH III

CONSTRUCTION - ENTRANCE/EXIT	(CO)
CHECK DAM	(CD)
DIVERSION BERM	(DI)
DOWNDRAIN STRUCTURE - TEMPORARY	(DN)
ROCK DAM	(RD)
SEDIMENT BARRIER - SILT FENCE	(SD1)
SEDIMENT BARRIER - GRAVEL RING	(SD2)
SEDIMENT BARRIER - BLOCK & GRAVEL	(SD3)
SEDIMENT BARRIER - BLOCK	(SD4)
TEMPORARY SEDIMENT BASIN	(SB1)
SILT FENCE - TYPE A	(SFA)
SILT FENCE - TYPE B	(SFB)
SILT FENCE - TYPE C	(SFC)
STORM DRAIN OUTLET PROTECTION	(ST)
SURFACE ROUGHENING	(SU)
DISTURBED AREA STABILIZATION - TEMPORARY STABILIZATION	(TS1)
DISTURBED AREA STABILIZATION - TEMPORARY GRASSING	(TS2)
DISTURBED AREA STABILIZATION - PERMANENT GRASSING	(TS3)
MATTING/BLANKETS	(Mb)



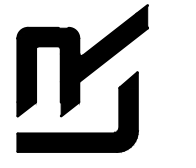
**CONSTRUCTION EROSION CONTROL
 BEST MANAGEMENT PRACTICES**

UPON IMPLEMENTATION AND INSTALLATION OF THE FOLLOWING AREAS: TRAILERS, PARKING, LAY DOWN, PORTA-POTTY, WHEEL WASH, CONCRETE WASHOUT, FUEL AND MATERIAL STORAGE CONTAINERS, SOLID WASTE CONTAINERS, ETC., IMMEDIATELY DENOTE THEM ON THE SITE MAPS AND NOTE ANY CHANGES IN LOCATION AS THEY OCCUR THROUGHOUT THE CONSTRUCTION PROCESS. IN ADDITION, NOTE ANY OFF-SITE AREA WHERE FILL IS IMPORTED FROM OR SOIL IS EXPORTED TO ON THE SITE MAPS.

PHASE 3

1. FINISH GRADE SIDE SLOPES & PREPARE SUBGRADES FOR SIDEWALKS, ETC.
2. PREPARE SITE FOR PAVING.
3. PAVE WHERE INDICATED ON PLANS. CONSTRUCT SIDEWALKS.
4. INSTALL APPROPRIATE INLET PROTECTION DEVICES FOR PAVED AREAS AS WORK PROGRESSES.
5. COMPLETE GRADING AND INSTALLATION OF PERMANENT STABILIZATION OVER ALL NON-PAVED AREAS.

DEPARTMENT OF PUBLIC WORKS
 CIVIL ENGINEERING
 701 W. MARKHAM
 LITTLE ROCK, ARKANSAS 72201



DRAWN BY	TH
DESIGNED	MB
CHECKED	BAP
DATE	12-27-2019
SCALE	H: 1"=20' V: 1"=5'
PROJECT NO.	13-16-DR-120
SHEET NO.	C10