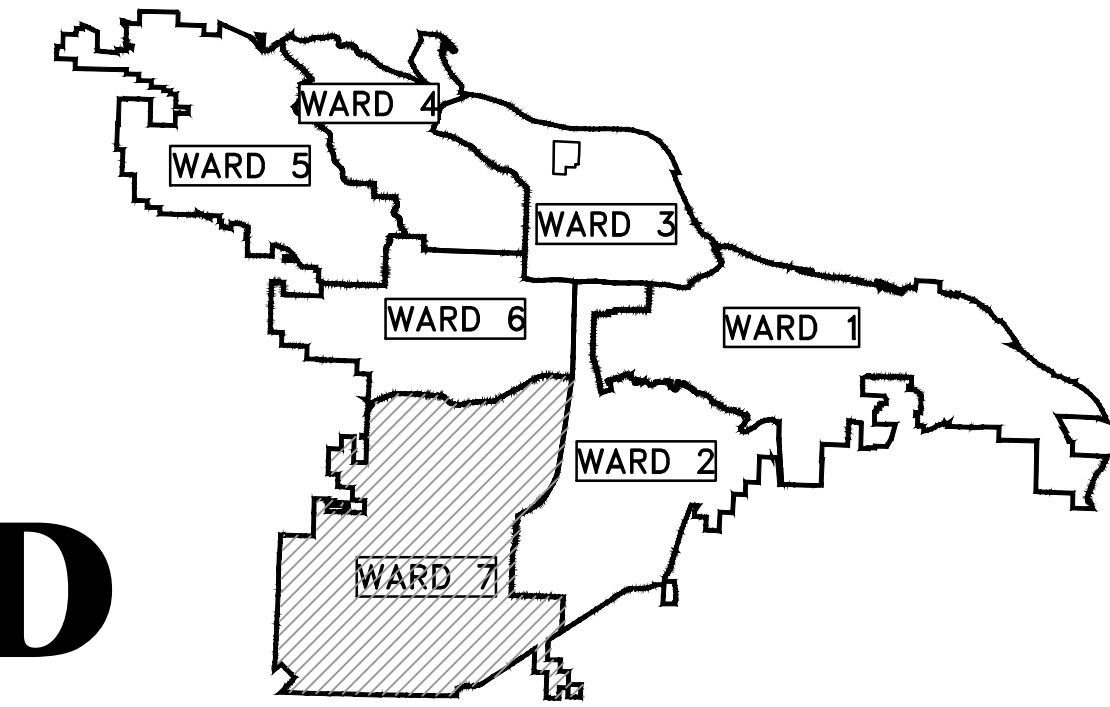
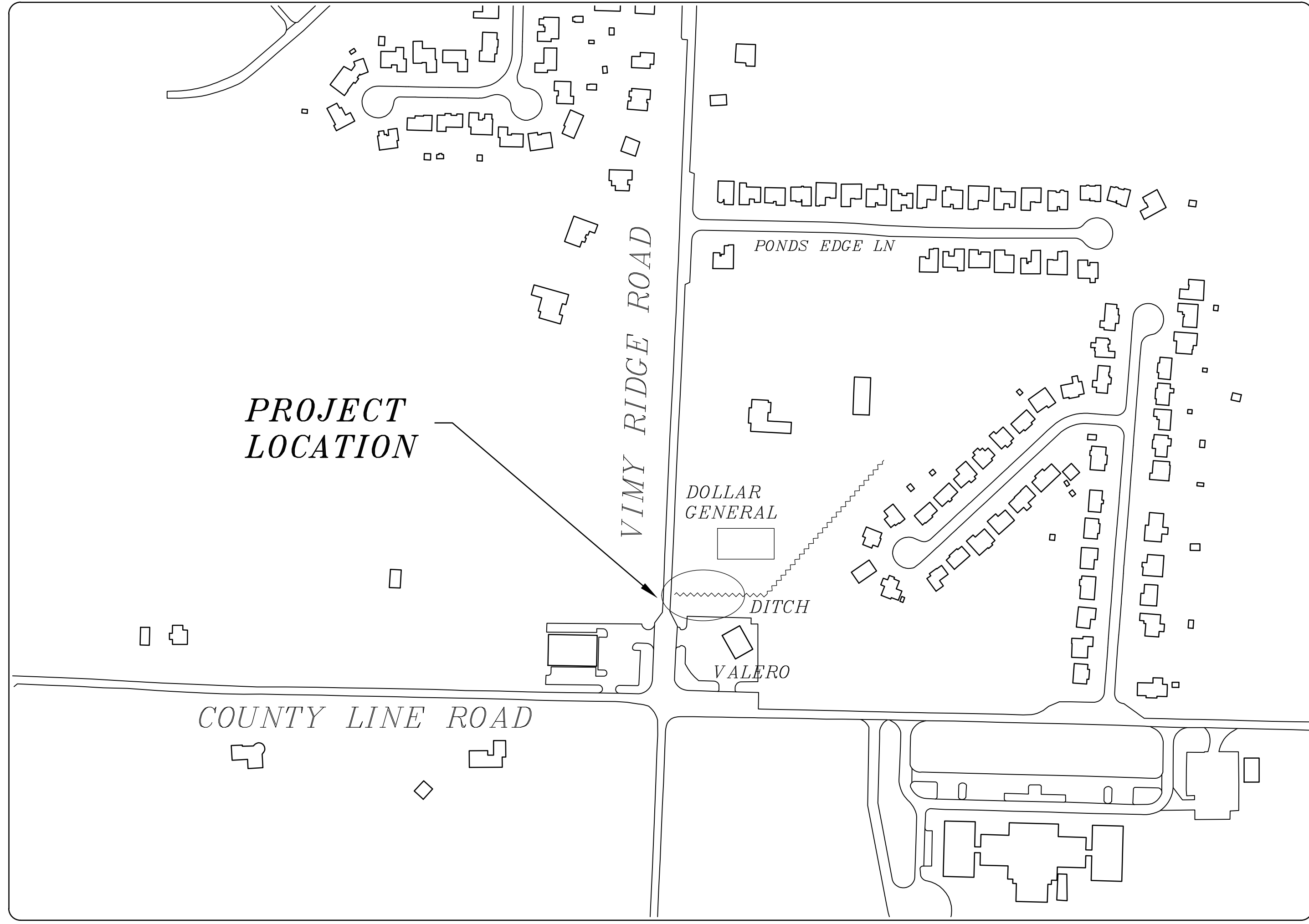


VIMY RIDGE BOX CULVERT EXTENSION VIMY RIDGE RD AT COUNTY LINE RD



PROJECT LOCATION - WARD 7



SHEET NO.	TITLE
C1	COVER SHEET
C2	SITE PLAN
C3	GRADING PLAN
C4	DETAILS
C5	DETAILS
C6	DETAILS
C7	DETAILS



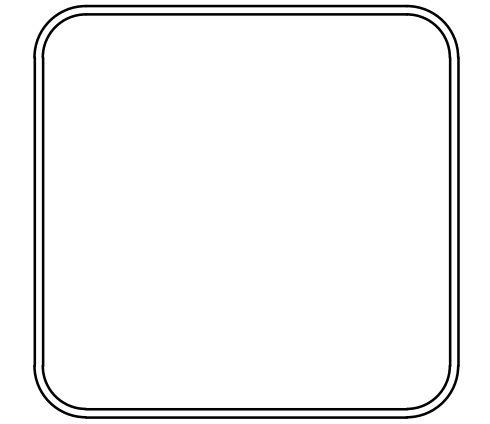
DEPARTMENT OF PUBLIC WORKS
CIVIL ENGINEERING
701 WEST MARKHAM STREET
LITTLE ROCK, ARKANSAS 72201



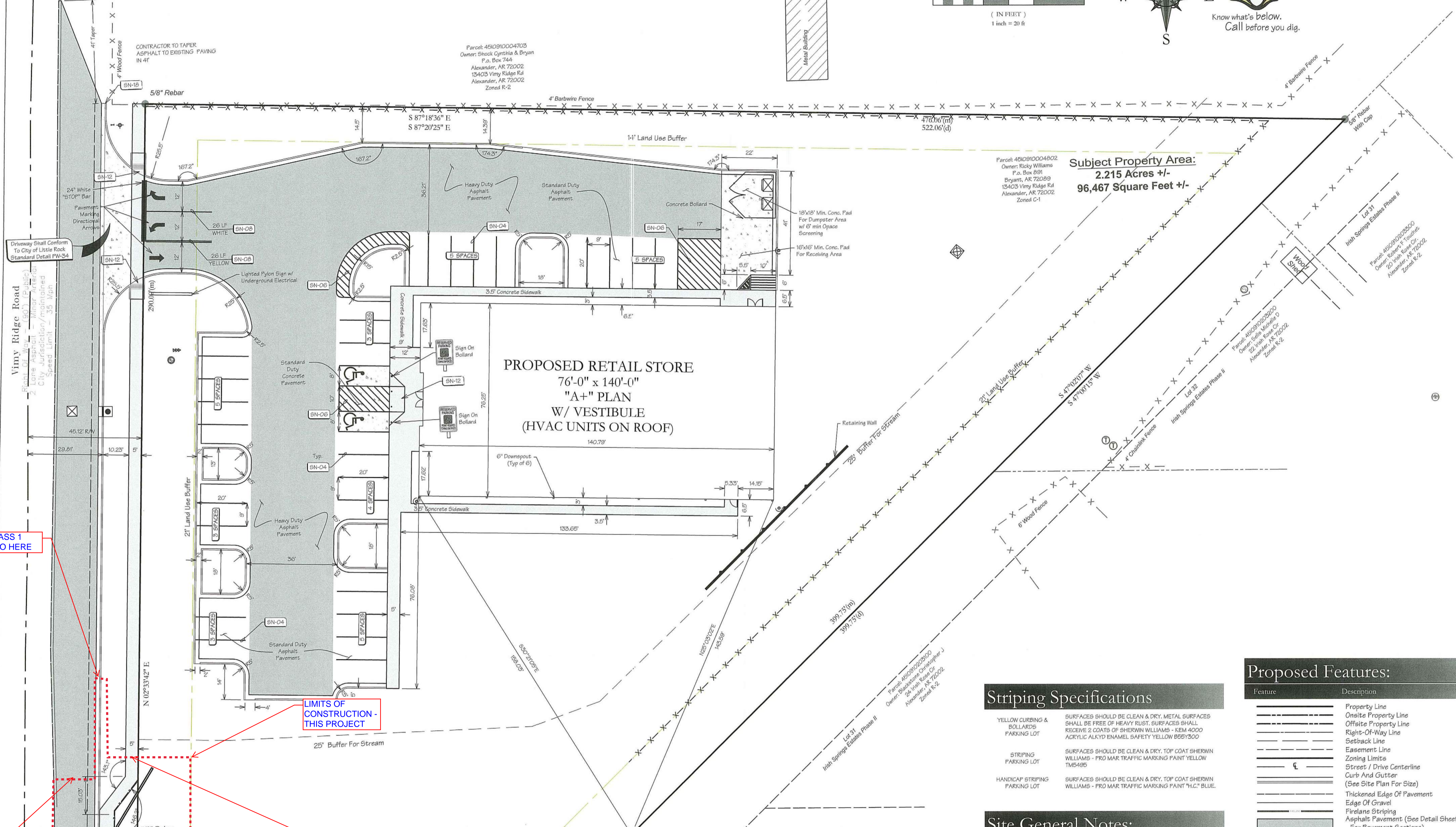
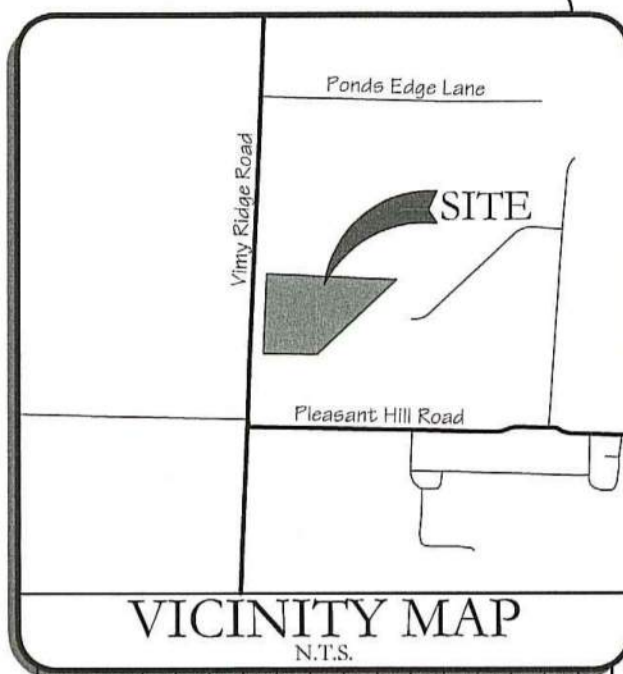
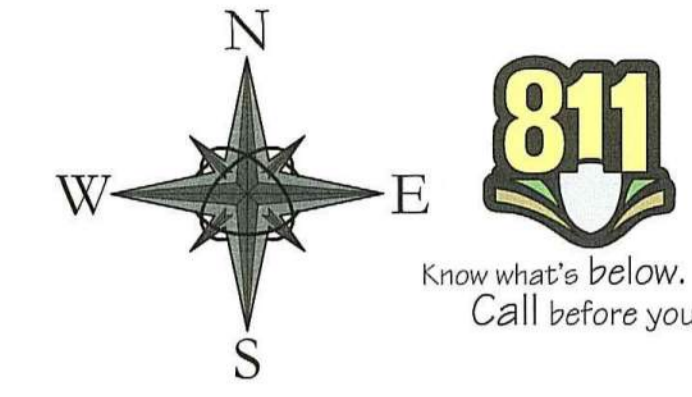
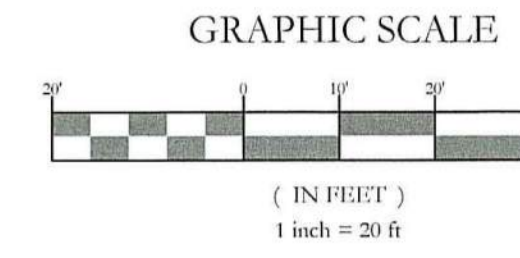
REVISIONS	DATE

CITY OF LITTLE ROCK, ARKANSAS
VIMY RIDGE BOX CULVERT EXTENSION
COVER SHEET

DEPARTMENT OF PUBLIC WORKS
CIVIL ENGINEERING
701 W. MARKHAM
LITTLE ROCK, ARKANSAS 72201



DRAWN BY
DESIGNED
CHECKED
DATE 11-17-2020
SCALE
PROJECT NO.
SHEET NO. C1



Subject Property Area:
2.215 Acres +/-
96,467 Square Feet +/-

PROPOSED RETAIL STORE
76'-0" x 140'-0"
"A+" PLAN
W/ VESTIBULE
(HVAC UNITS ON ROOF)

Site Information:

PROPERTY INFORMATION		
Gross Site Area:	96,467.00 sf	2.21 acres
Proposed Dedicated R.O.W.:	0.00 sf	0.00 acres
Net Site Area:	96,467.00 sf	2.21 acres
SITE INFORMATION		
Total Paved Area:	23,078.37 sf	0.53 acres
Total Sidewalk Area:	2,420.04 sf	0.06 acres
Total Building Area:	10,706.55 sf	0.25 acres
Total Impervious Area:	36,204.96 sf	37.5%
Total Pervious Area:	60,262.04 sf	62.5%

Striping Specifications

Feature	Description
YELLOW CURBING & BOLLARDS PARKING LOT	SURFACES SHOULD BE CLEAN & DRY. METAL SURFACES SHALL BE FREE OF HEAVY RUST. SURFACES SHALL RECEIVE 2 COATS OF SHERWIN WILLIAMS - SEM 4000 ACRYLIC ALKYL ENAMEL SAFETY YELLOW 8557300
STRIPING PARKING LOT	SURFACES SHOULD BE CLEAN & DRY. TOP COAT SHERWIN WILLIAMS - PRO MAR TRAFFIC MARKING PAINT YELLOW TM5495
HANDICAP STRIPING PARKING LOT	SURFACES SHOULD BE CLEAN & DRY. TOP COAT SHERWIN WILLIAMS - PRO MAR TRAFFIC MARKING PAINT 1/4" BLUE.

Site General Notes:

- Dimensions are measured from the Face of Curb, the Edge of Pavement, the Edge of Sidewalk the Face/Corner of the Building(s) or the Center/End of Stripes.
- All radii shall be 4 feet at Face of Curb unless otherwise specified.
- Layout of Site Plan is based on and limited to survey information.
- All Curb & Gutter shall be 24" wide per detail sheet.
- All Pavement Marking shall be applied in accordance with the requirements outlined in the most current edition of the "Manual on Uniform Traffic Control Devices" (MUTCD).
- All Signs, Traffic Control Devices, etc. shall follow the guidelines of the MUTCD.
- The Contractor shall refer to the Architectural drawings for Building Floor plans and Dimensions, Wall Sections, Door Openings, Building Utility Entrance Points, etc. The Contractor shall immediately notify the Architect and Engineer in the event that the Civil Site Plans Building Layout does not match the Architectural drawings.
- All handicap spaces shall be striped / marked in accordance with the handicap striping detail.
- All pavement indicated shall be standard duty bituminous pavement unless otherwise noted on plan. The pavement shall be constructed in accordance with the pavement section detail.
- It is the Contractor's responsibility to calculate construction staking coordinates according to the dimensions shown on these plans. The Contractor shall verify the accuracy of the coordinates shown on the plans and notify the Engineer of any irregularities before construction starts.
- All ramps shall have detectable truncated dome panels per A.D.A. and city standards and the detail sheet

Proposed Features:

Feature	Description
Property Line	Property Line
Onsite Property Line	Onsite Property Line
Offset Property Line	Offset Property Line
Right-Of-Way Line	Right-Of-Way Line
Setback Line	Setback Line
Easement Line	Easement Line
Zoning Limits	Zoning Limits
Street / Drive Centerline	Street / Drive Centerline
Curb And Gutter	Curb And Gutter
(See Site Plan For Size)	(See Site Plan For Size)
Thickened Edge Of Pavement	Thickened Edge Of Pavement
Edge Of Gravel	Edge Of Gravel
Firelane Striping	Firelane Striping
Asphalt Pavement (See Detail Sheet For Pavement Sections)	Asphalt Pavement (See Detail Sheet For Pavement Sections)
Concrete Pavement (See Detail Sheet For Pavement Sections)	Concrete Pavement (See Detail Sheet For Pavement Sections)
Concrete Sidewalk (See Site Plan For Dimensions)	Concrete Sidewalk (See Site Plan For Dimensions)
General Fence Line (See Plan For Type)	General Fence Line (See Plan For Type)
Chain Link Fence Line	Chain Link Fence Line
Board Fence Line	Board Fence Line
Parking Counter	Parking Counter
Storm Catch Basin(s)	Storm Catch Basin(s)
Retaining Wall	Retaining Wall
See UTILITY PLAN for More Information	See UTILITY PLAN for More Information
Gate Valve	Gate Valve
Fire Hydrant Assembly	Fire Hydrant Assembly
Water Meter - Single	Water Meter - Single
Water Meter - Double	Water Meter - Double
Sanitary Sewer Manhole	Sanitary Sewer Manhole
Utility Pole	Utility Pole
Light Pole	Light Pole

Site Plan Notes:

- SN-04 4" Painted Yellow Striping
- SN-06 4" Wide Painted Yellow Stripes, 2'-0" o.c. @ 45°
- SN-07 4" Wide Lane Striping - Per M.U.T.C.D. (See Plan for Length and Color)
- SN-08 4" Wide Double Lane Striping - Per M.U.T.C.D. (See Plan for Length and Color)
- SN-12 Accessible Ramp in Sidewalk

CLR CLASS 1 CURB TO HERE

LIMITS OF CONSTRUCTION - THIS PROJECT

BOX CULVERT EXTENSION & HEADWALLS. SEE DETAILS.

5 FT SIDEWALK (4" THICK) TO HERE

ROADWAY WIDENING TO HERE (SEE DETAIL)

CLR CLASS 1 CURB TO HERE

Site Plan

Site Development For:
Dollar General of Alexander, AR
Vimy Ridge Road, Alexander, Arkansas
PG General Holdings (Alexander), LLC
5110 Talley Road
Little Rock, AR 72204
(501) 219-8899



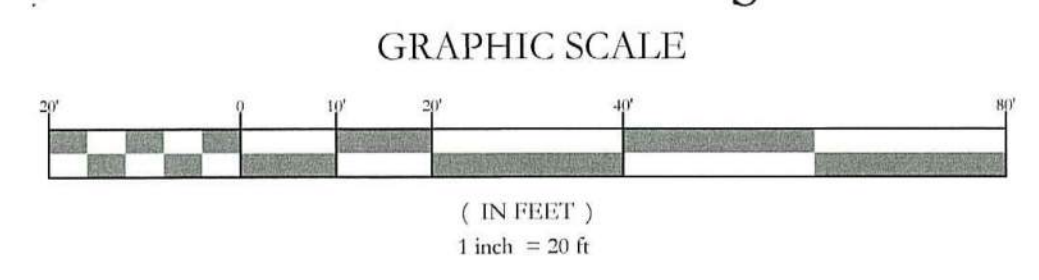
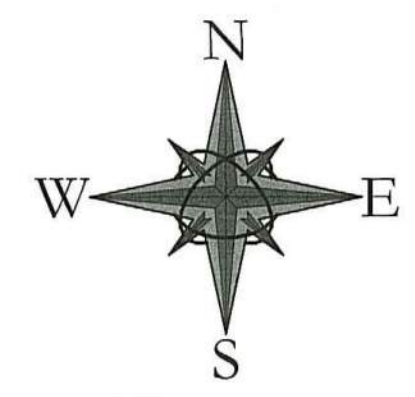
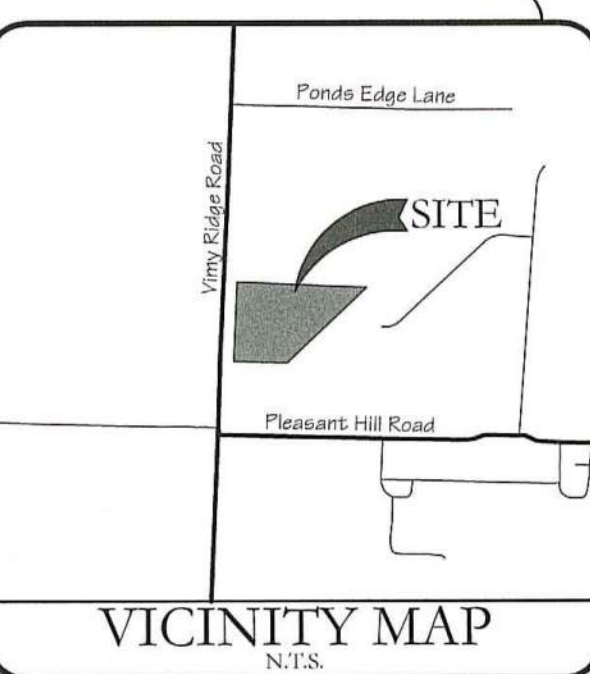
12/18/19

BLEW & ASSOCIATES, PA
CIVIL ENGINEERS & LAND SURVEYORS
3825 NORTH SHILOH DRIVE
FAYETTEVILLE, ARKANSAS 72703
OFFICE: 479.443.4506
FAX: 479.582.1883
www.BLEWING.com

Certificate of Authorization No 1534
DRAWN BY: J. Orr JOB NUMBER: 19-4866
SUBMITTAL DATE: 2019-12-18 SCALE: As Noted

19-4866 Civil 005.dwg

C2



Proposed Features:

Feature	Description
[Symbol]	Property Line
[Symbol]	Onsite Property Line
[Symbol]	Offsite Property Line
[Symbol]	Right-of-way Line
[Symbol]	Easement Line
[Symbol]	Street / Drive Centerline
[Symbol]	Curb And Gutter (See Site Plan For Size)
[Symbol]	Thickened Edge Of Pavement
[Symbol]	Edge Of Gravel
[Symbol]	Asphalt Pavement (see Detail Sheet For Pavement Sections)
[Symbol]	Concrete Pavement (see Detail Sheet For Pavement Sections)
[Symbol]	Concrete Sidewalk (See Site Plan For Dimensions)
[Symbol]	General Fence Line (See Plan For Type)
[Symbol]	Chain Link Fence Line
[Symbol]	Board Fence Line
[Symbol]	Storm Catch Basin (s)
[Symbol]	Ditch Line
[Symbol]	Fault Line / Grade Change
[Symbol]	Storm Pipe (See Grading Plan For Type And Size)
[Symbol]	Retaining Wall
[Symbol]	See Utility Plan For Line Sizes
[Symbol]	Water Line
[Symbol]	Tea, Cross, Bends, Gate Valve & Reducer
[Symbol]	Fire Hydrant & Assembly
[Symbol]	Single Water Meter
[Symbol]	Double Water Meter
[Symbol]	Sanitary Sewer Force Main
[Symbol]	Sanitary Sewer Manhole
[Symbol]	Utility Pole
[Symbol]	Light Pole

Note:
 * See Survey For Existing Features Legend.
 * See Cover Sheet For Abbreviation List.

Grading Notes:

- PRE-CONSTRUCTION:**
- X Prior to start of site grading, erosion control measures shall be installed in accordance to the erosion control plan. These erosion control measures, as a minimum, shall include all silt fencing, temporary sediment ponds, temporary construction entrance, and any other measures necessary to ensure that sediments does not leave the site.
 - X Contractor shall notify the appropriate Utility Companies and the State One-Call System a minimum of 48 hours prior to any excavation for the location of all underground utility lines that will be affected by this development. Please note that existing utilities noted on plan have been located with all available information and that exact location of utility lines may not be accurate.
 - X A pre-construction meeting shall be held on site once ALL Erosion Control Measures have been installed and prior to any site grading / construction / demolition.

- GENERAL:**
- X Contractor shall install/use all required equipment so as to comply with all safety standards dictated by OSHA, Federal, State, and Local Regulations.
 - X Contractor shall coordinate with appropriate Utility Company as listed on the cover sheet for adjustment of utility lines affected by cut and fill.
 - X Areas to be graded shall be cleared and grubbed so as to remove all organic material including but not limited to vegetation, trees, roots, debris or other materials that would affect the stability of the fill. If uncertainty exists as to the suitability of any material, the contractor shall have a Registered Geotechnical Engineer make the final determination.
 - X Contractor shall ensure that the fill material be free of organic materials, frozen materials, muck, highly compressible materials, rocks, rubbish, timber, brush, stumps, building debris, and other materials that would negatively affect the fill material.
 - X Contractor shall stock pile and maintain all good top soil removed from areas to be graded and filled for use in final grading all critical / unpaved areas.
 - X Contractor shall proof roll subgrade of all areas to be paved prior to installation of paving materials. Any soft areas shall be removed and replaced with select fill and compacted as noted in the pavement section shown on the detail sheet.

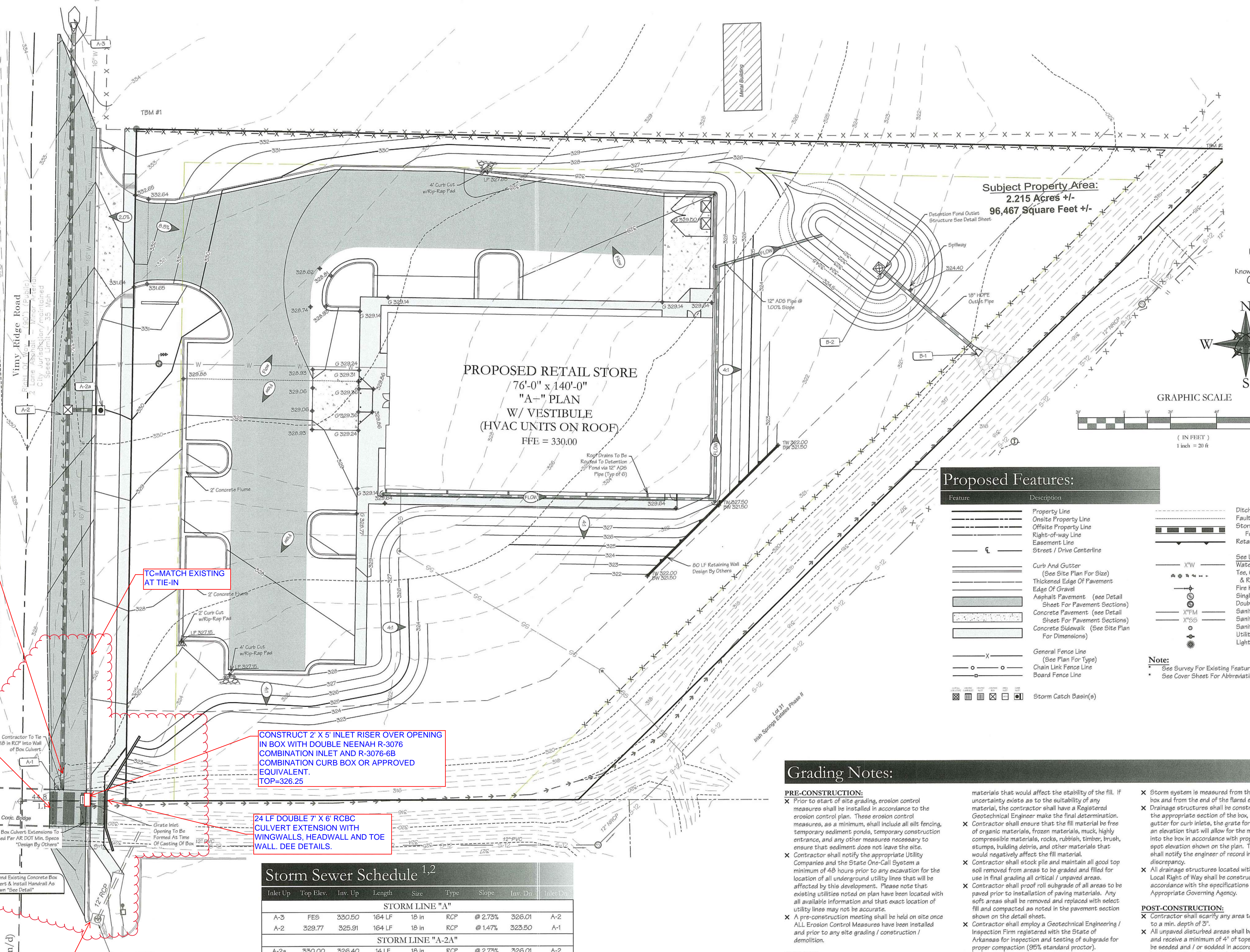
- POST-CONSTRUCTION:**
- X Contractor shall scarify any area to receive top soil to a min. depth of 3".
 - X All unpaved disturbed areas shall be graded smooth and receive a minimum of 4" of topsoil. The area shall be seeded and / or sodded in accordance with the landscape plan. The area shall be watered until a hardy cover of grass has been established and 80% of the site has been stabilized in accordance with ADEG's Construction General Permit (ARK150000).
 - X Once the site has reached final stabilization in accordance to the requirements set forth in Adeg's construction general permit, the contractor shall file a notice of termination.

STORM SYSTEM:

- X All drainage structures under paved areas and / or areas expecting heavy duty traffic loading shall be designed to meet AASHTO Heavy Duty (H20) traffic loading.
- X Storm pipe / box shall be bedded in accordance with the specifications of ASTM D2521 (latest edition available at <http://www.astm.org>).

PROPOSED RETAIL STORE
76'-0" x 140'-0"
"A-" PLAN
W/ VESTIBULE
(HVAC UNITS ON ROOF)
FFE = 330.00

Subject Property Area:
2.215 Acres +/-
96,467 Square Feet +/-



Storm Sewer Schedule ^{1,2}

Inlet Up	Top Elev.	Inv. Up	Length	Size	Type	Slope	Inv. Dn	Inlet Dn
STORMLINE "A"								
A-3	FE5	330.50	164 LF	18 in	RCP	@ 2.73%	326.01	A-2
A-2	329.77	325.91	164 LF	18 in	RCP	@ 1.47%	323.50	A-1
STORM LINE "A-2A"								
A-2a	330.00	326.40	14 LF	18 in	RCP	@ 2.73%	326.01	A-2
STORMLINE "B"								
B-2	326.33	321.00	57 LF	18 in	RCP	@ 1.00%	320.43	B-1

¹ Storm Sewer Pipes shall be Reinforced Concrete Pipe, Class III per ASTM C-76, with flexible plastic bitumen gaskets at joints.

² Pipes not located under pavement areas are permitted to be High Density Poly Ethylene Pipe (HDPE) or Smooth Lined Metal Pipe (SLMP). Both types of pipes shall have a minimum Manning's "n" value :f 0.015 to be verified by the Engineer of Record.

REMOVE 18" FES AND EXTEND 18" RCP TO TIE INTO SIDE OF BOX. FES TO BE PLACED IN CITY STORAGE YARD.

TC= MATCH EXISTING AT TIE-IN

CONSTRUCT 2' X 5' INLET RISER OVER OPENING IN BOX WITH DOUBLE NEENAH R-3076 COMBINATION INLET AND R-3076-6B COMBINATION CURB BOX OR APPROVED EQUIVALENT. TOP=326.25

24 LF DOUBLE 7' X 6' RBCB CULVERT EXTENSION WITH WINGWALLS, HEADWALL AND TOE WALL. SEE DETAILS.

REMOVE CONC. HEADWALL DOWN TO TOP OF BRIDGE SLAB. REMOVE TOP 12" OF CONC. WING WALLS.

Extend Existing Concrete Box Culvert & Install Handrail As Shown "See Detail"

TC=327.01 (MATCH INLET TOP)

Grading Plan

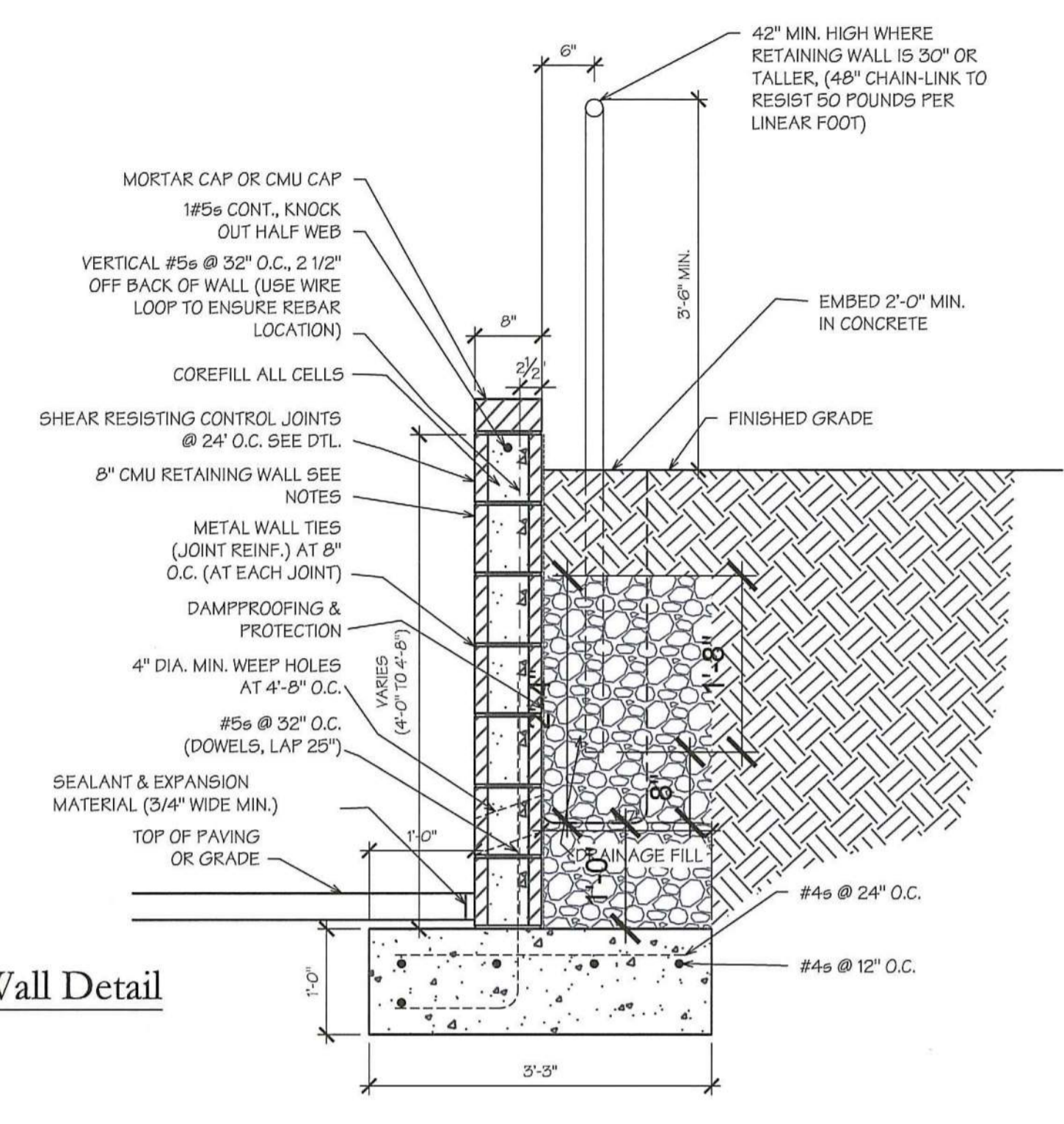
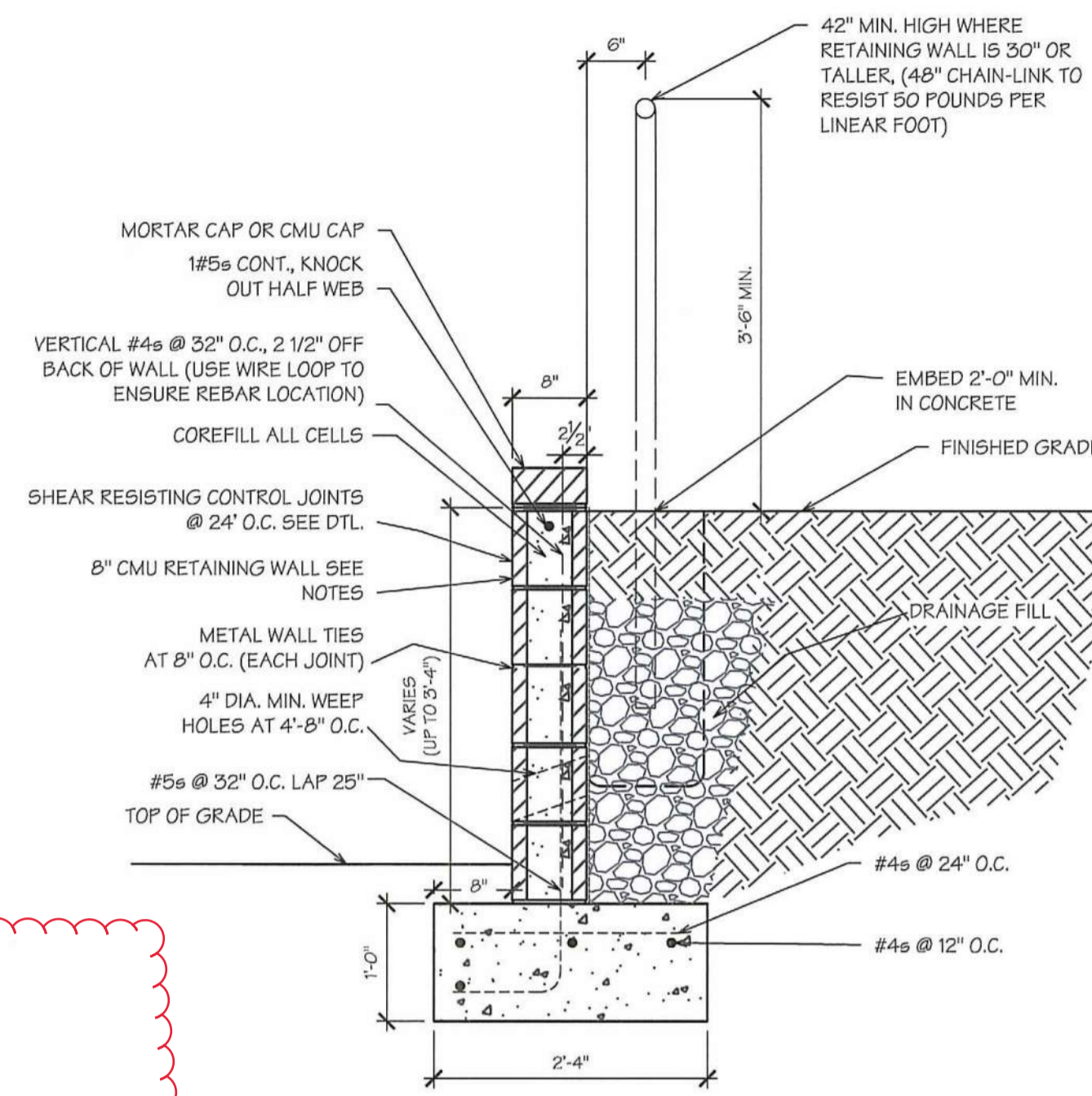
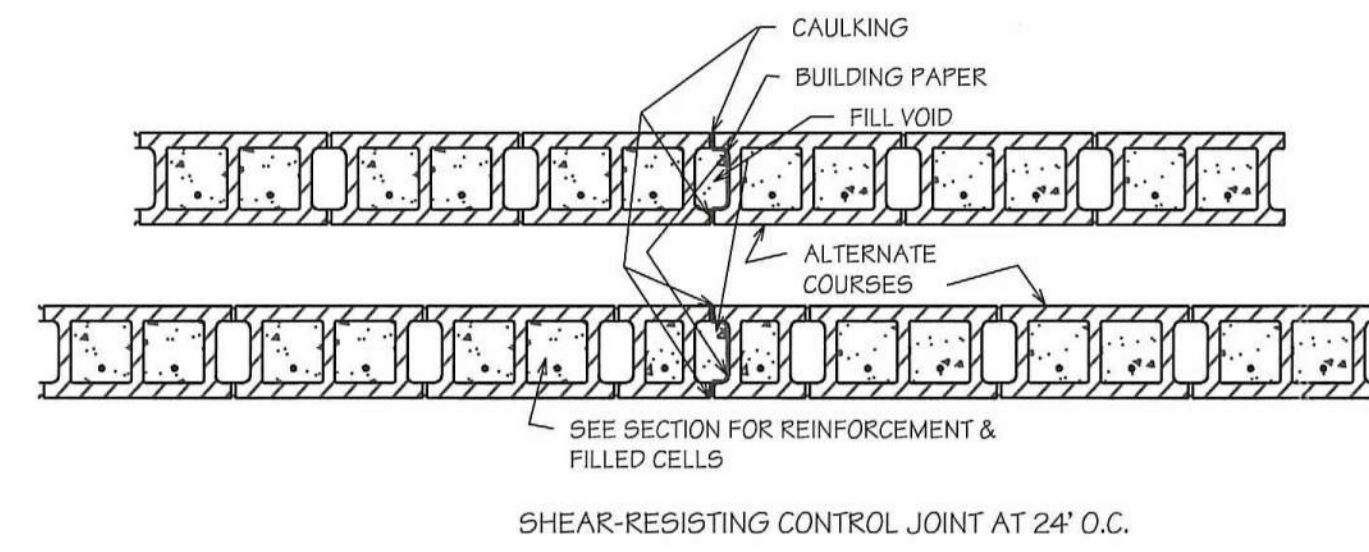
Site Development For
Dollar General of Alexander, AR
 Viny Ridge Road, Alexander, Arkansas
PG General Holdings (Alexander), LLC
 5110 Talley Road
 Little Rock, AR 72204
 (501) 219-8899



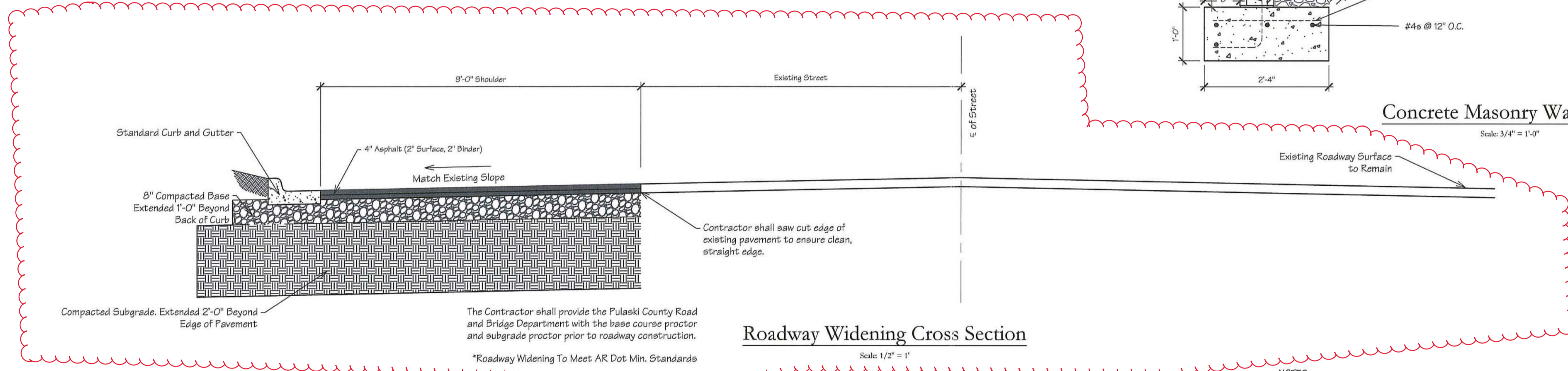
12/18/19

BLEW & ASSOCIATES, P.A.
 CIVIL ENGINEERS & LAND SURVEYORS
 3825 NORTH SHILOH DRIVE
 FAYETTEVILLE, ARKANSAS 72703
 OFFICE: 479.443.4506
 FAX: 479.582.1883
 www.BLEWINC.com
 Certificate of Authorization No. 1534

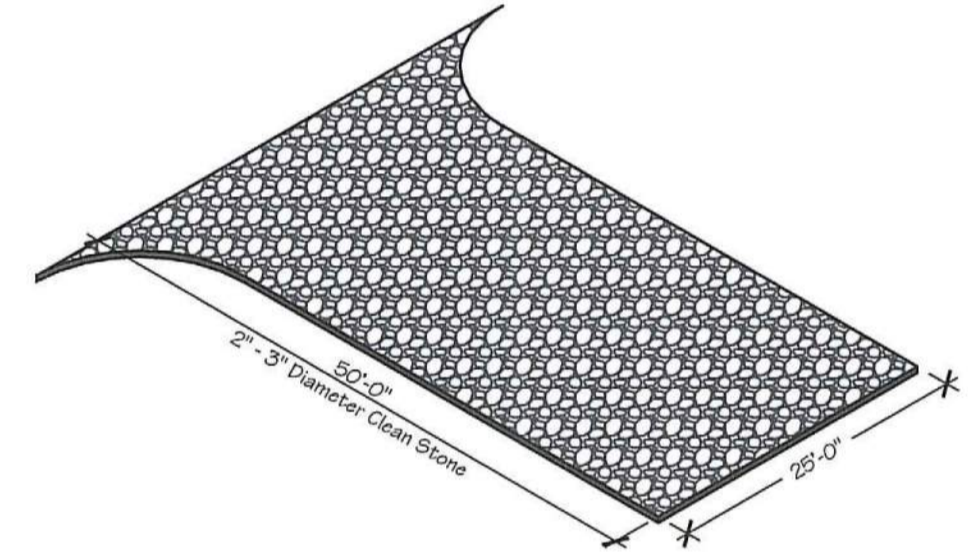
DRAWN BY:	J. Orr	JOB NUMBER:	19-4866
REVISION DATE:	2019-12-18	SCALE:	As Noted
DRAWING NAME:	19-4866 Civil 005.dwg		
SHEET NUMBER:	C3		



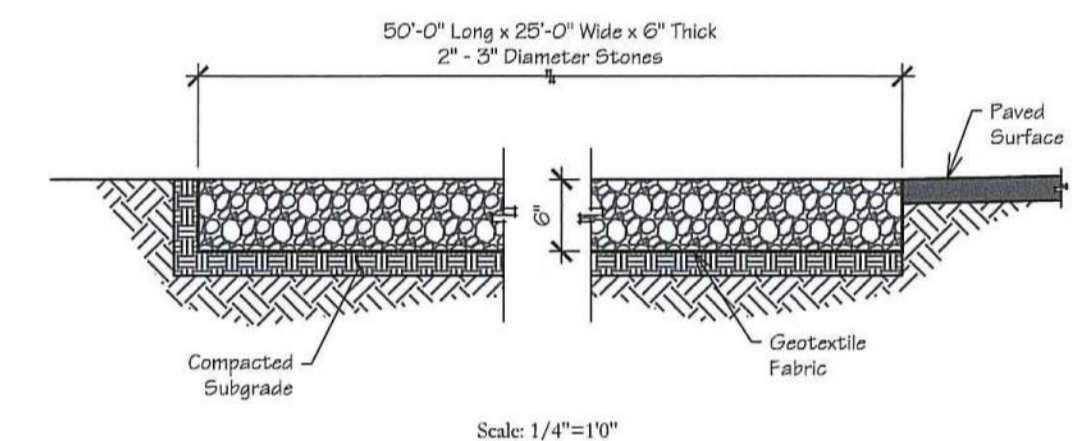
Concrete Masonry Wall Detail
Scale: 3/4" = 1'-0"



Roadway Widening Cross Section
Scale: 1/2" = 1'



Construction Entrance
Scale: 1/16" = 1/4"



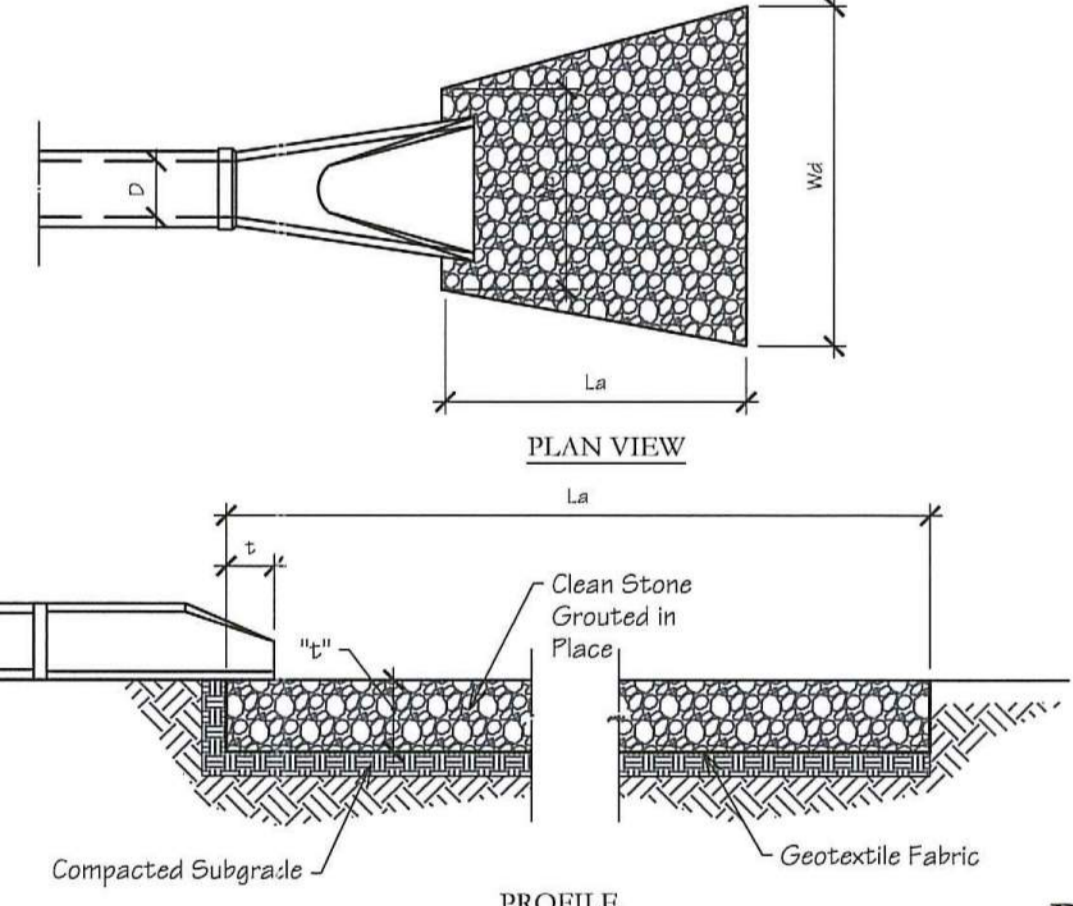
Driveway
Scale: 1/4" = 1/8"

TABLE 1 - Rock Outlet Protection Apron Dimensions

Culvert Size D, (inches)	Rock Size d ₅₀ , (inches)	Apron Length La, (feet)	Upstream Width Wu, (feet)	Downstream Width Wd, (feet)	Thickness t, (inches)	Rock Qty, (tons)
12	6	12	3	13	18	15
18	9	16	4.5	18	24	20
24	12	20	6	22	24	60
30	15	24	7.5	24	24	75
36	18	24	9	27	30	120
42	21	28	10.5	30	36	180
48	24	28	12	32	36	215

NOTES:

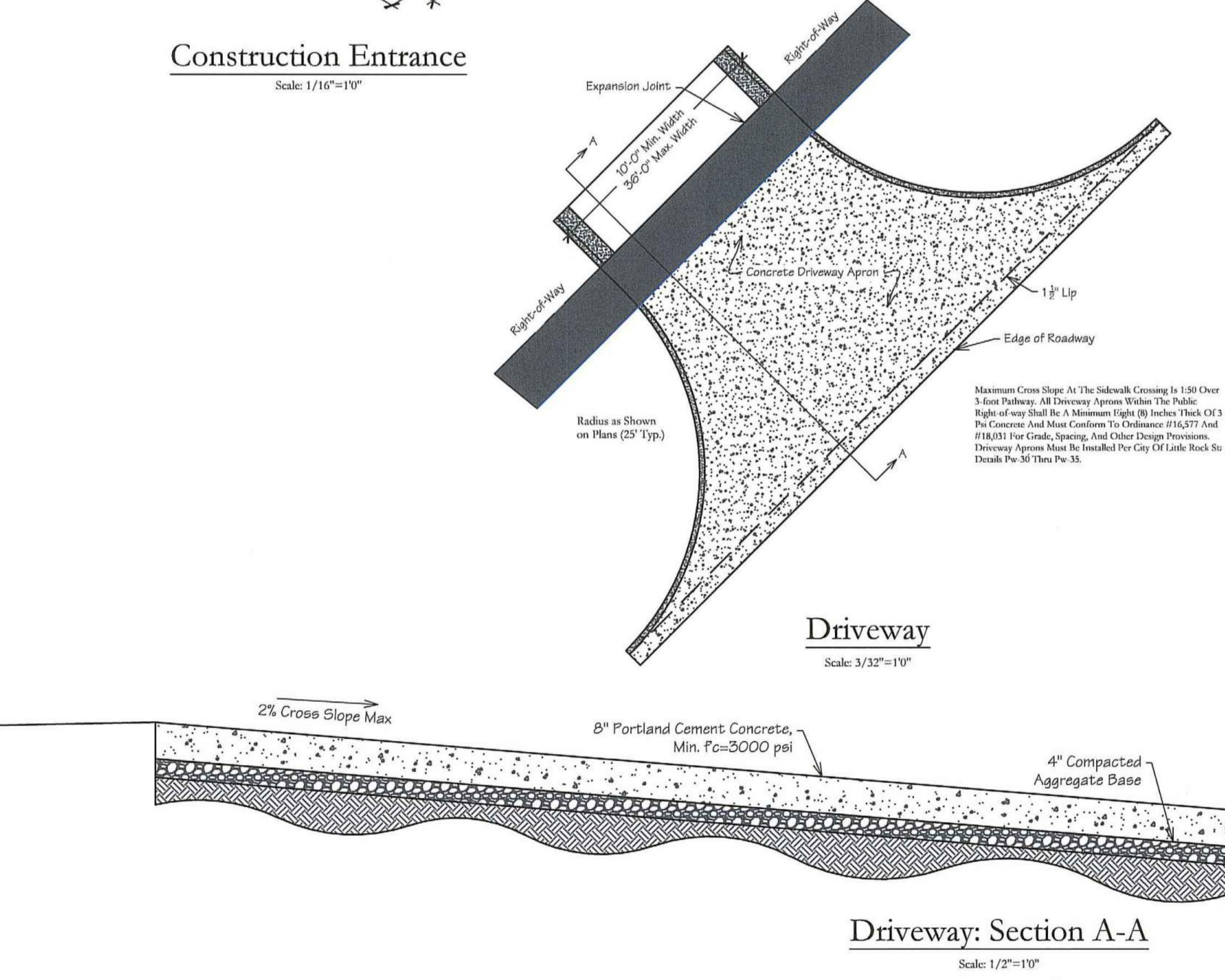
- Apron length:** Apron length (La) shall be determined from Table 1.
- Apron width:** The apron width is based on the diameter of the discharge pipe (D). The apron width will be 3D at the upstream end (Wu), and the downstream width (Wd) will be equal to (D + La). The apron shall extend across the channel bottom and up side slopes for a minimum height equal to the diameter of the pipe (D).
 - Alignment:** The apron shall be located so that there are no bends in the horizontal alignment. The apron should be level over its length, and the elevation of the downstream end of the apron must be the same as the elevation of the receiving channel or adjacent ground.
 - Thickness:** The required apron thickness is shown in Table 1.
 - Gabions:** When a gabion mattress is used it shall be made of double twisted galvanized steel wire. Gabions shall be fabricated in such a manner that the sides, ends, and lid can be assembled at the construction site into mats a minimum of 12 inches thick.
- Materials:** Outlet protection may be done using rock riprap or gabion mattresses to construct the apron. The stone shall consist of field stone or rough unheated quarry stone. The stone shall be hard and angular and of a quality that will not disintegrate on exposure to water or weathering. Broken concrete may be used provided it does not have any exposed steel or reinforcing bars, and that it is broken into blocky pieces such that the largest dimension of each piece is no more than 3 times the smallest dimension. The required rock size is shown in Tables 1 and 2. In all cases a geotextile (filter fabric) shall be placed between the apron and the underlying soil to prevent soil movement into and through the riprap.



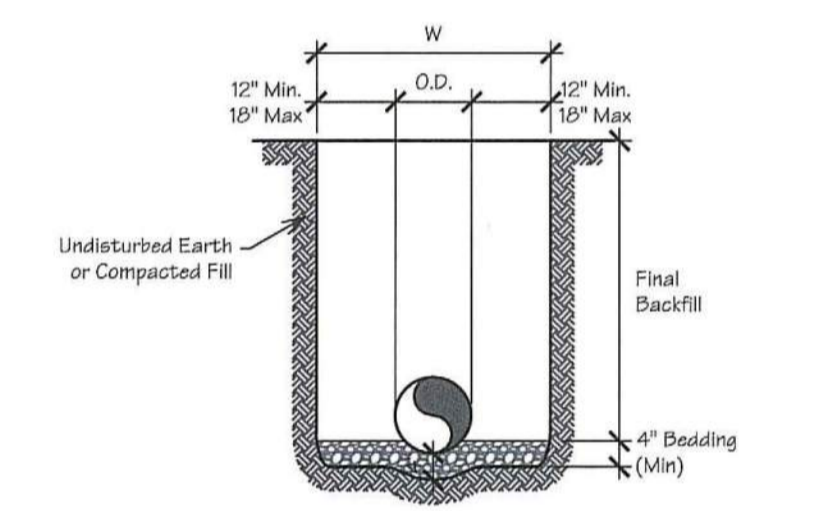
Rip Rap
Not to Scale

TABLE 2 - Required Rock Gradation

Gabion Rock	Smallest dimension in inches				percent of rocks smaller than size shown
	6" d ₅₀	9" d ₅₀	12" d ₅₀	15" d ₅₀	
18	9	16	4.5	18	24
21	9	18	5	20	24
24	9	20	6	22	24
30	9	22	7.5	24	24
36	12	24	9	27	30
42	15	26	10.5	30	36
48	18	28	12	32	36



Driveway: Section A-A
Scale: 1/2" = 1'

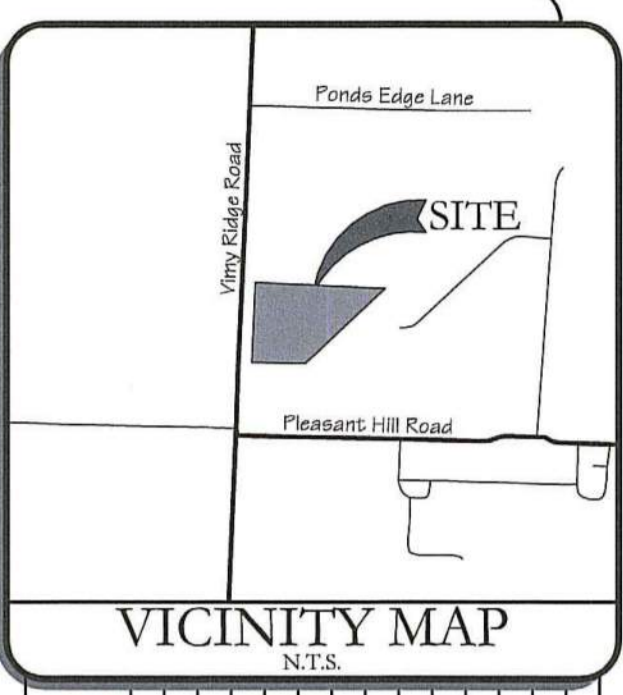


Rigid Pipe
NOT TO SCALE

- GENERAL NOTES**
- BEDDING SHALL BE CLASS I-A WORKED BY HAND. IF GROUNDWATER IS ANTICIPATED, THEN BEDDING SHALL BE CLASS I-B COMPACTED TO 95% STANDARD PROCTOR. (SEE SPECIFICATIONS FOR GRADATION)
 - HAUNCHING SHALL BE WORKED AROUND THE PIPE BY HAND TO ELIMINATE VOIDS AND SHALL BE CLASS I-A OR CLASS I-B OR CLASS II COMPACTED TO 85% PROCTOR.
 - INITIAL BACKFILL SHALL BE CLASS I-A WORKED BY HAND, OR CLASS I-B OR CLASS II COMPACTED TO 95% STANDARD PROCTOR.
 - INITIAL BACKFILL NOT UNDER PAVED AREAS CAN BE CLASS III COMPACTED TO 90% STANDARD PROCTOR.
 - FINAL BACKFILL SHALL BE CLASS I, II, OR III COMPACTED AS NOTED IN NOTES 3, AND 4.
 - FINAL BACKFILL NOT UNDER PAVED AREAS CAN BE CLASS IV-A COMPACTED TO 95% STANDARD PROCTOR.
 - ALL MATERIALS ARE CLASSIFIED IN ACCORDANCE WITH ASTM D 2321-00.
 - ALL MATERIALS SHALL BE INSTALLED IN MAXIMUM 8" LOOSE LIFTS IN ACCORDANCE WITH ASTM D 698. CLASS III AND IV-A MATERIALS SHALL BE COMPACTED NEAR OPTIMUM MOISTURE CONTENT.
 - HILL SALVAGED FROM EXCAVATION SHALL BE FREE OF DEBRIS, ORGANICS AND ROCKS LARGER THAN 3".
 - ALL TRENCH EXCAVATIONS SHALL BE SLOPED, SHORED, SHUTTED, BRACED, OR OTHERWISE SUPPORTED IN COMPLIANCE WITH OSHA REGULATIONS AND LOCAL ORDINANCES. (SEE SPECIFICATIONS)

Storm Sewer Trench and Bedding
NOT TO SCALE

CONTRACTOR SHALL REFER TO THE GEOTECHNICAL REPORT FOR THE SOIL TYPES LOCATED ON THE THIS SITE AND SHALL FOLLOW THE GEOTECH RECOMMENDATIONS.



REVISIONS:

NO.	DATE	DESCRIPTION

Site Development For:
Dollar General of Alexander, AR
 Viny Ridge Road
PG General Holdings (Alexander), LLC
 5110 Talley Road
 Little Rock, AR 72204
 (501) 219-8899



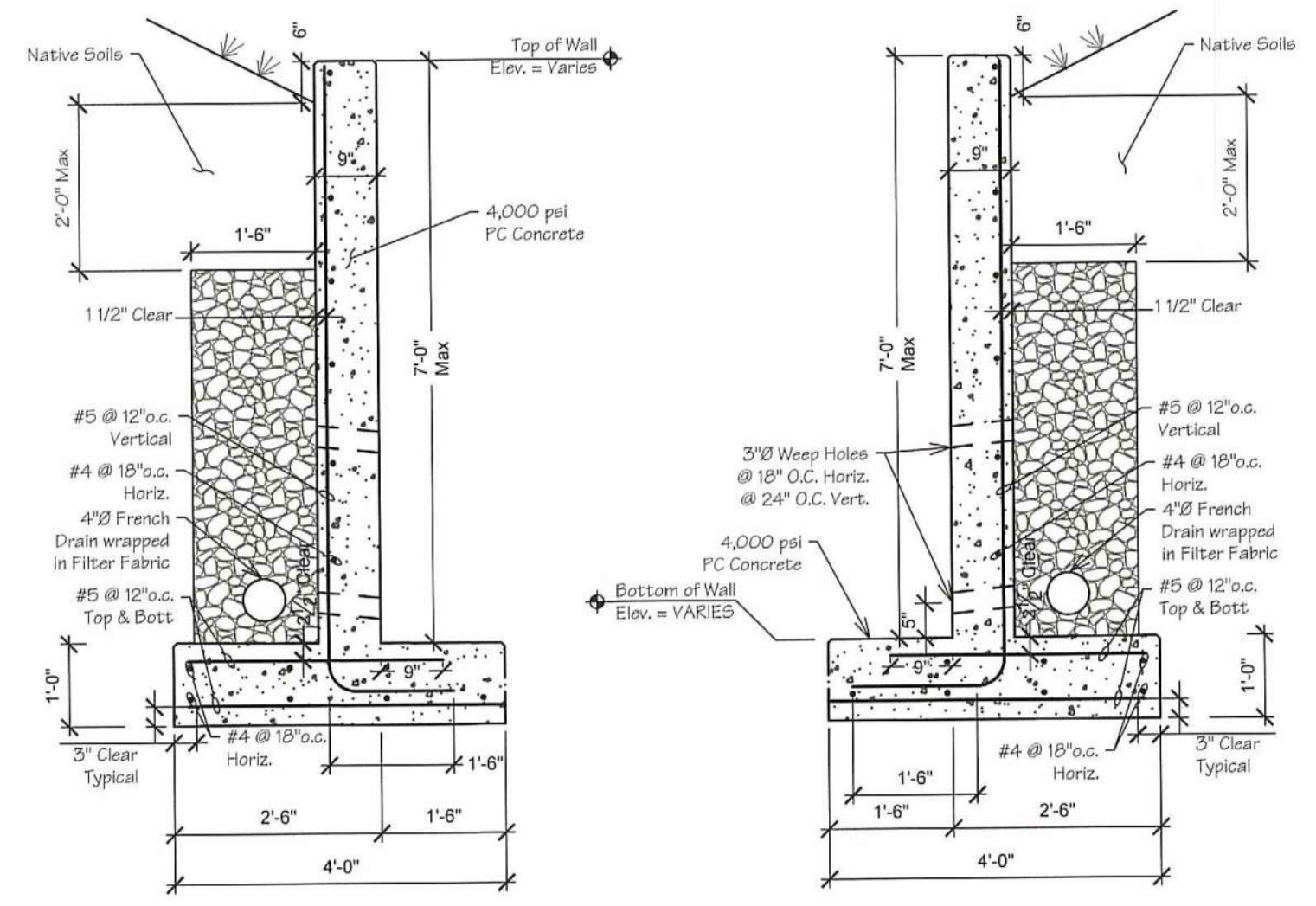
BLEW & ASSOCIATES, P.A.
 CIVIL ENGINEERS & LAND SURVEYORS

524 W. SYCAMORE ST, SUITE 4
 FAYETTEVILLE, ARKANSAS 72703
 OFFICE: 479.443.4506
 FAX: 479.582.1883
 www.BLEWINC.com

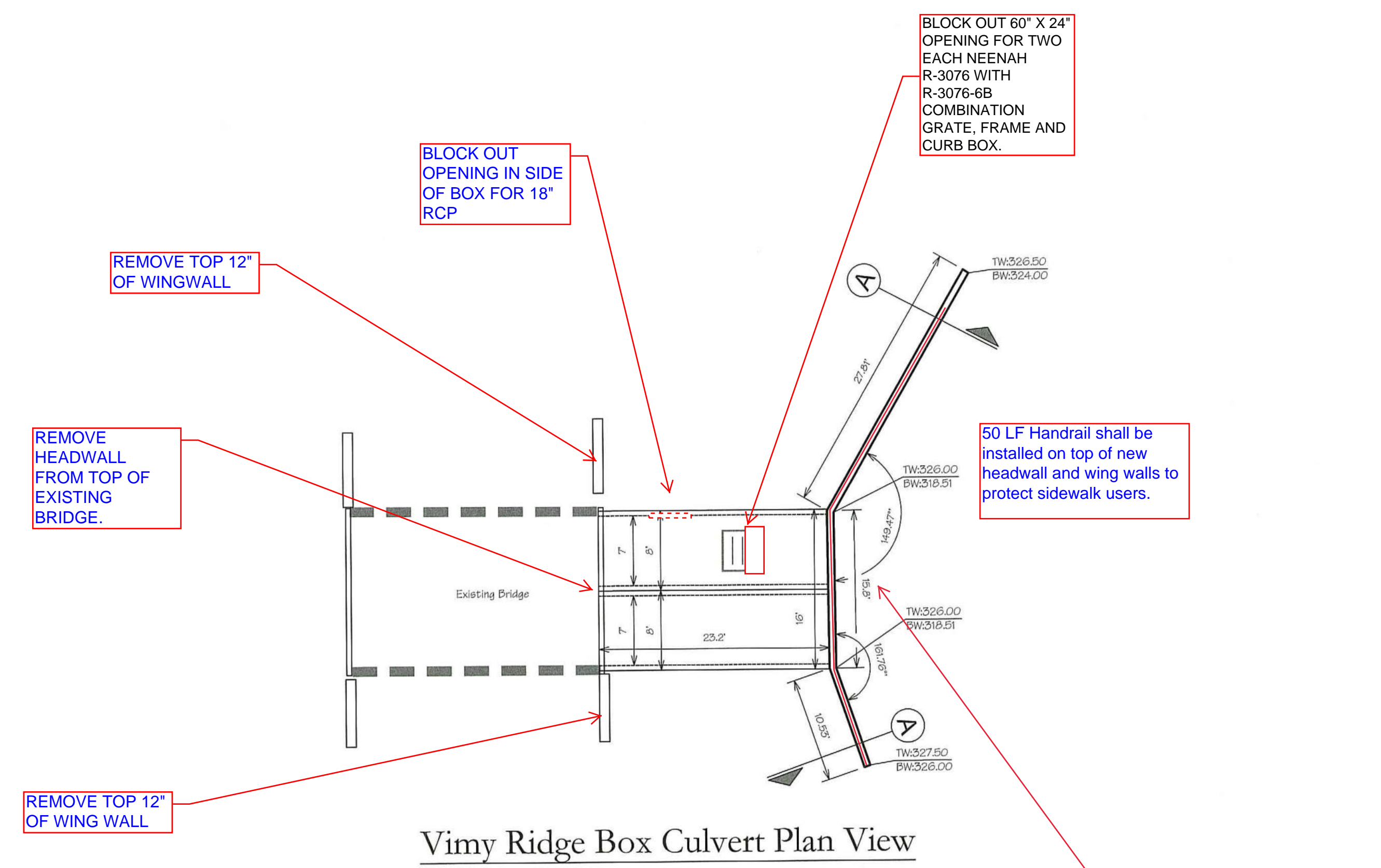
Certificate of Authorization No 1534

DRAWN BY: J. Orr	JOB NUMBER: 19-4866
SUBMITTAL DATE: 2019-12-18	SCALE: As Noted
DRAWING NAME: 19-4866 Details 002.dwg	
SHEET NUMBER: C4	

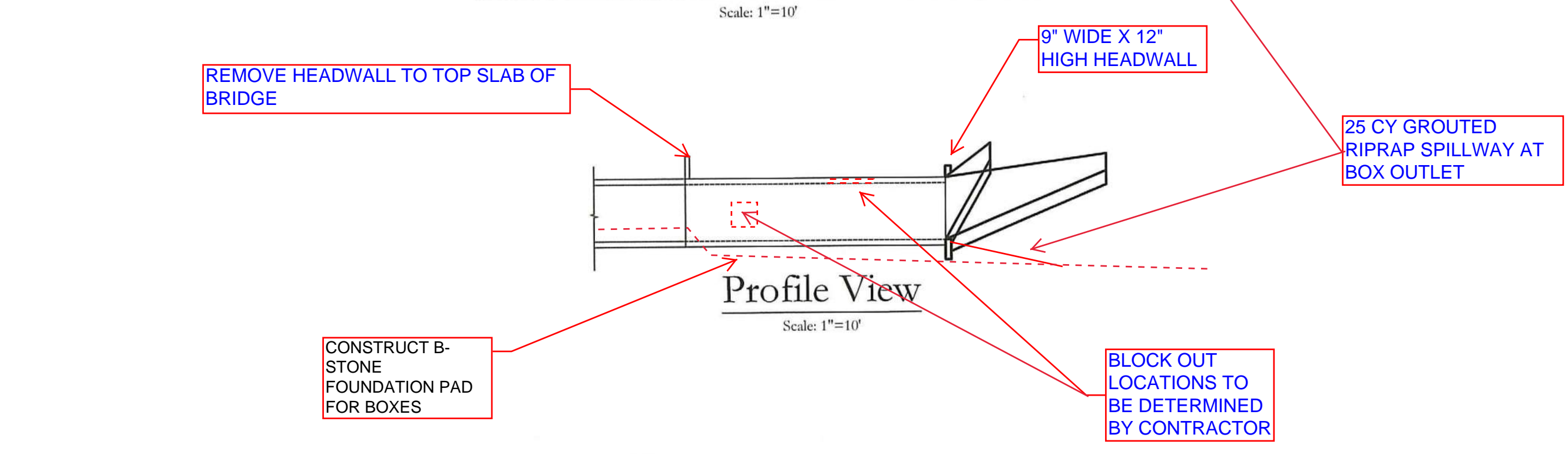
n:\projects\19-4866 dg alexander (viny ridge road), ar (civil drawings)\19-4866 details 002.dwg - Plotted on 12/18/2019 2:02:24 PM @ a scale of 1:1 to dwg to pdf.pc3 by Joe Orr



7' Concrete Retaining Wall Cross Section A
Scale: N.T.S.

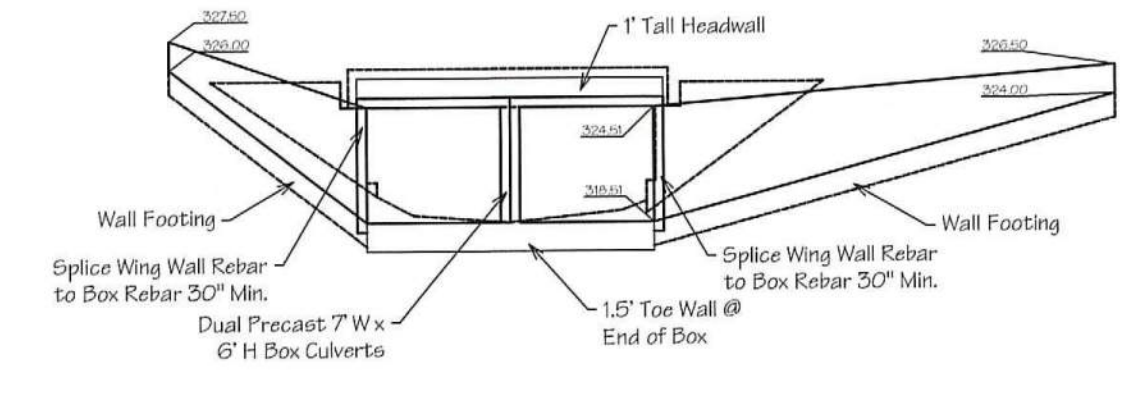


Vimy Ridge Box Culvert Plan View
Scale: 1"=10'

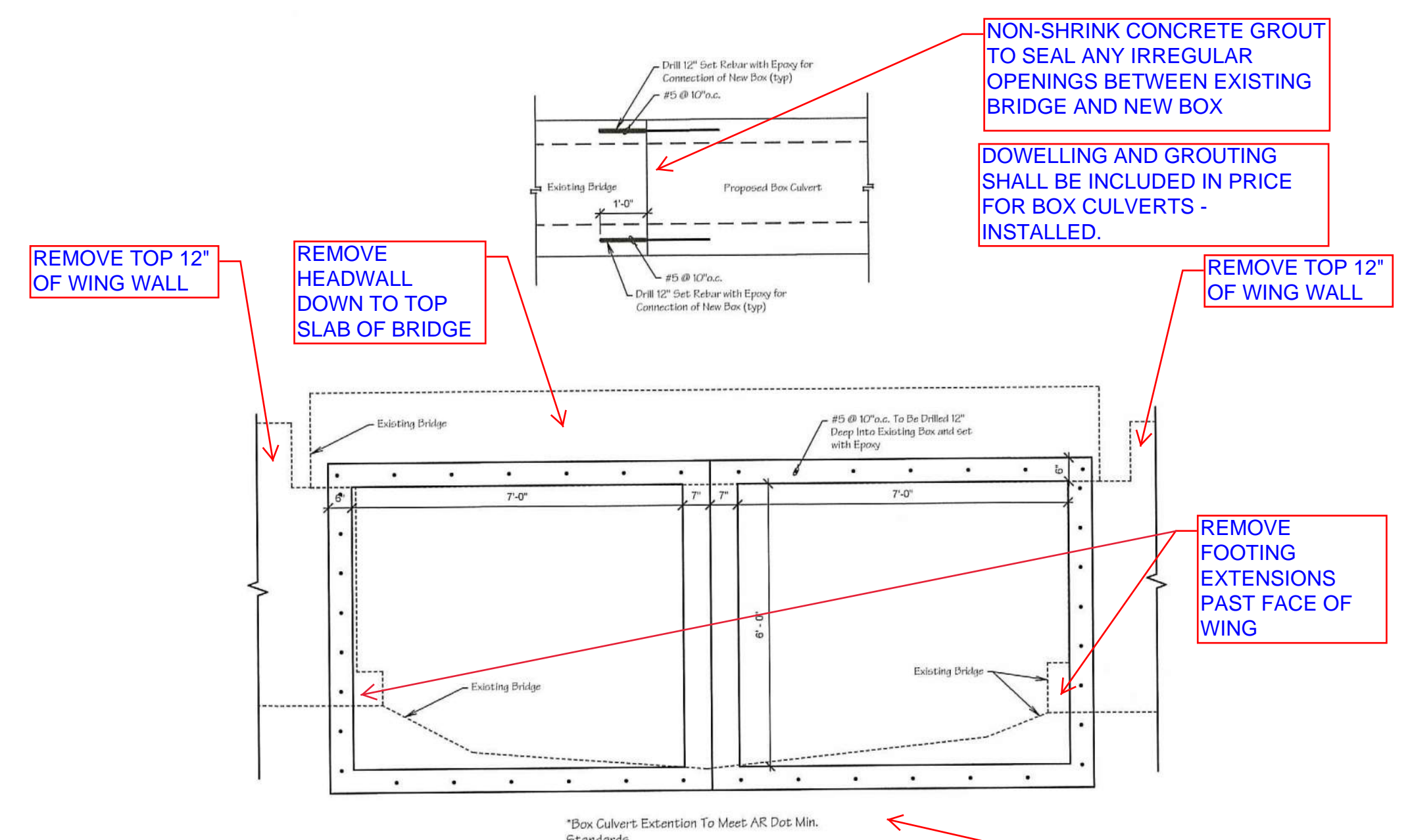


Profile View
Scale: 1"=10'

CONSTRUCT B-STONE FOUNDATION PAD FOR BOXES

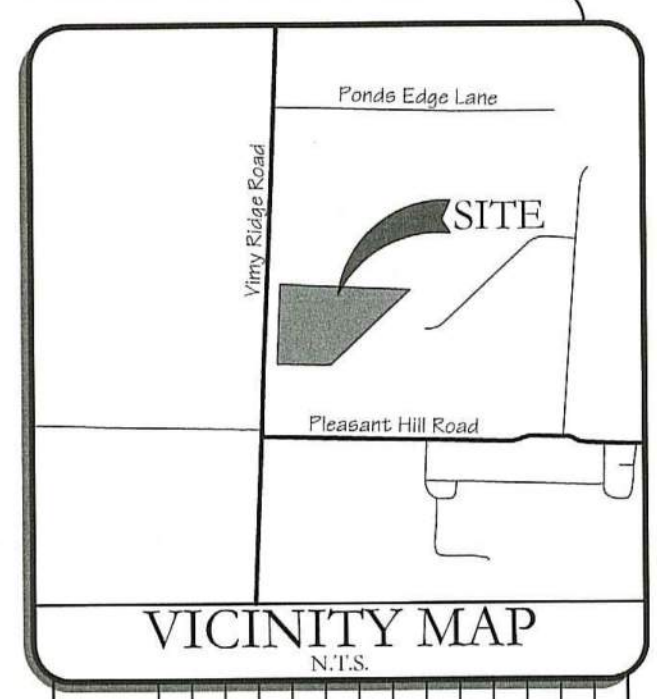


East Retaining Wall
Scale: 1"=10'



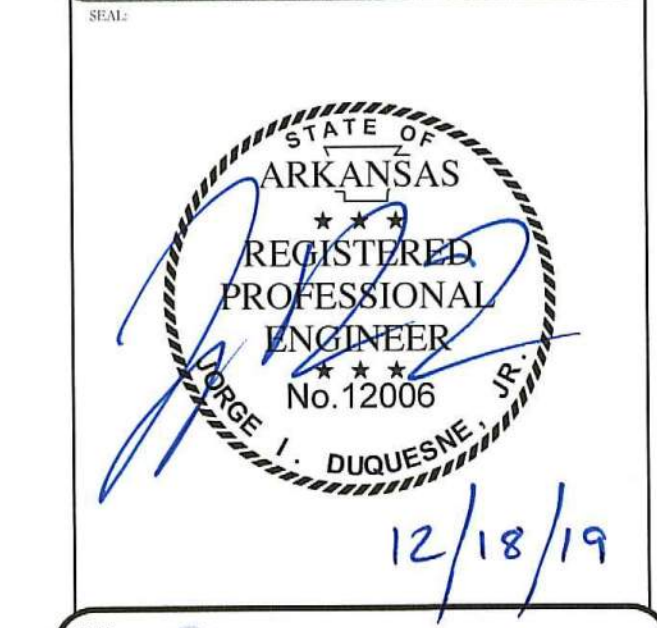
Existing Concrete Box Connection Detail
Scale: N.T.S.

CONSTRUCT B-STONE FOUNDATION PAD FOR BOXES.



NO.	DATE	REVISIONS:	DESCRIPTION

Site Development For:
Dollar General of Alexander, AR
Vimy Ridge Road
PG General Holdings (Alexander), LLC
5110 Talley Road
Little Rock, AR 72204
(501) 219-8899

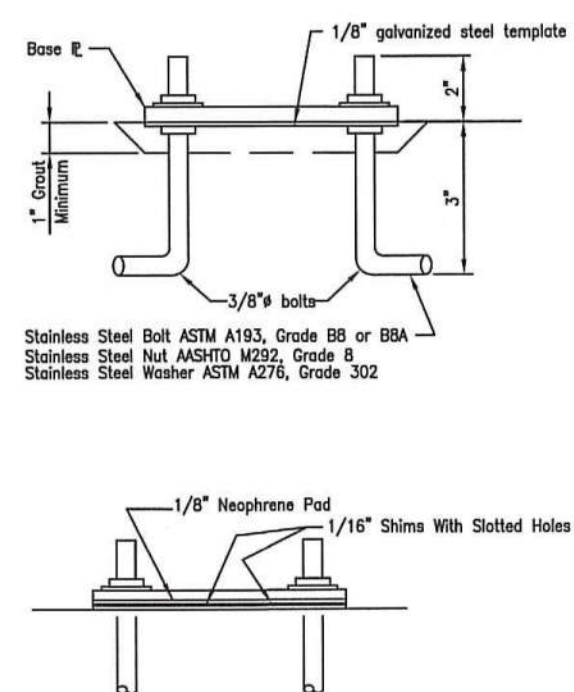


BLEW & ASSOCIATES, PA
CIVIL ENGINEERS & LAND SURVEYORS
524 W. SYCAMORE ST, SUITE 4
FAYETTEVILLE, ARKANSAS 72703
OFFICE: 479.443.4506
FAX: 479.582.1883
www.BLEWINC.com
Certificate of Authorization No 1534
DRAWN BY: J. Orr
JOB NUMBER: 19-4866
SUBMITTAL DATE: 2019-12-18
SCALE: As Noted
DRAWING NAME: 19-4866 Details 002.dwg
SHEET NUMBER:
C-5



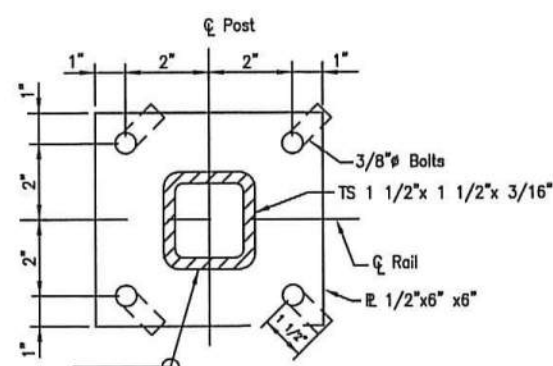
TITLE
HANDRAIL DETAIL

Issue Date	PW-21
AUG. 2006	Revision Date
	APR 2015



Contractor may place the 1/8" galvanized steel template on the finished sidewalk surface and provide shim plates and neoprene pads for leveling. In lieu of placing the template on nuts, leveling and finishing with grout.

Note: All posts & bolsters shall be vertical.

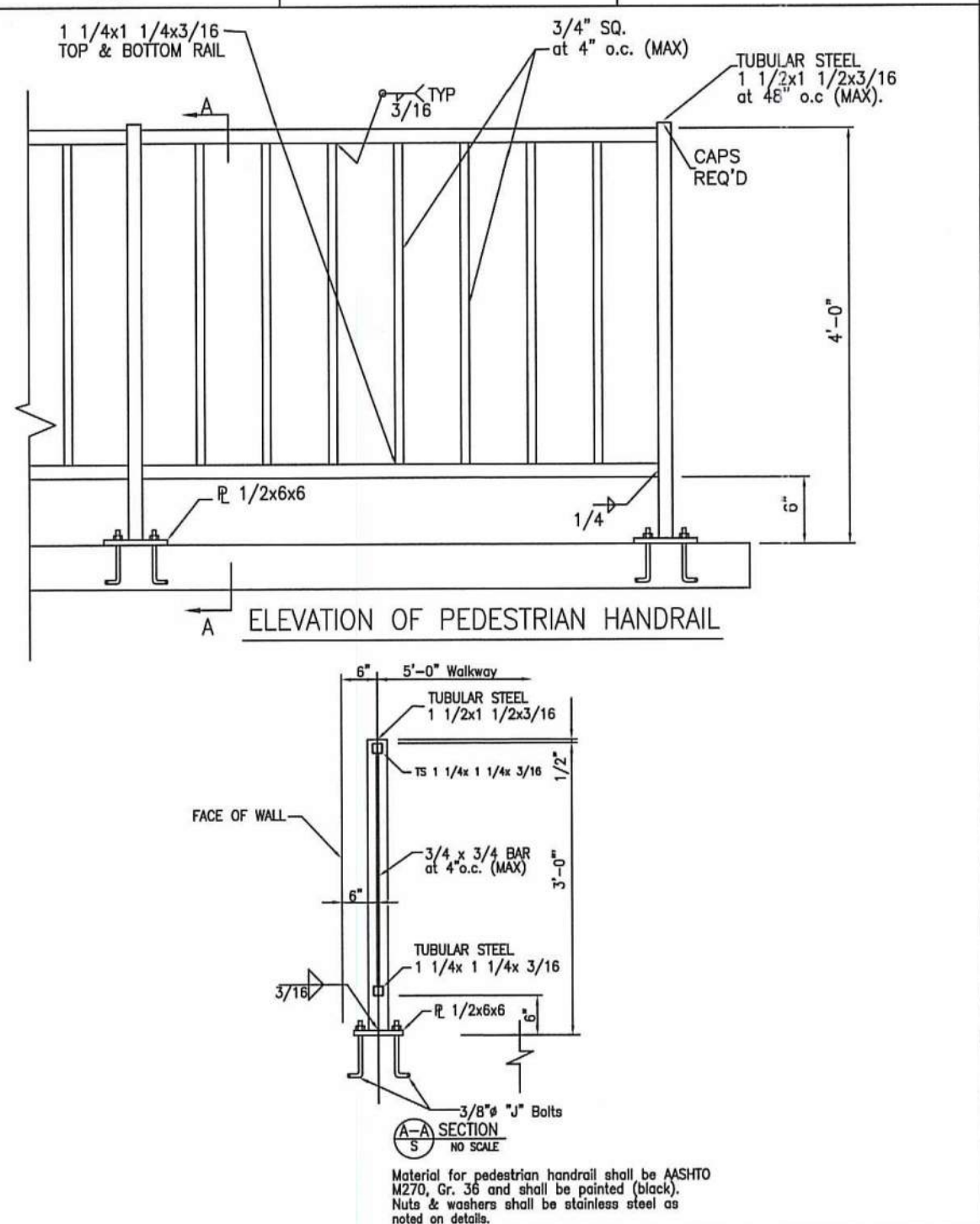


HANDRAIL ANCHOR BOLT ASSEMBLIES

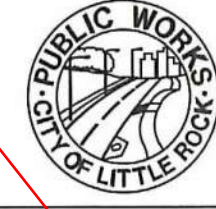


TITLE
HANDRAIL DETAIL
ALTERNATE

Issue Date	PW-20
AUG. 2006	Revision Date
	APR 2015

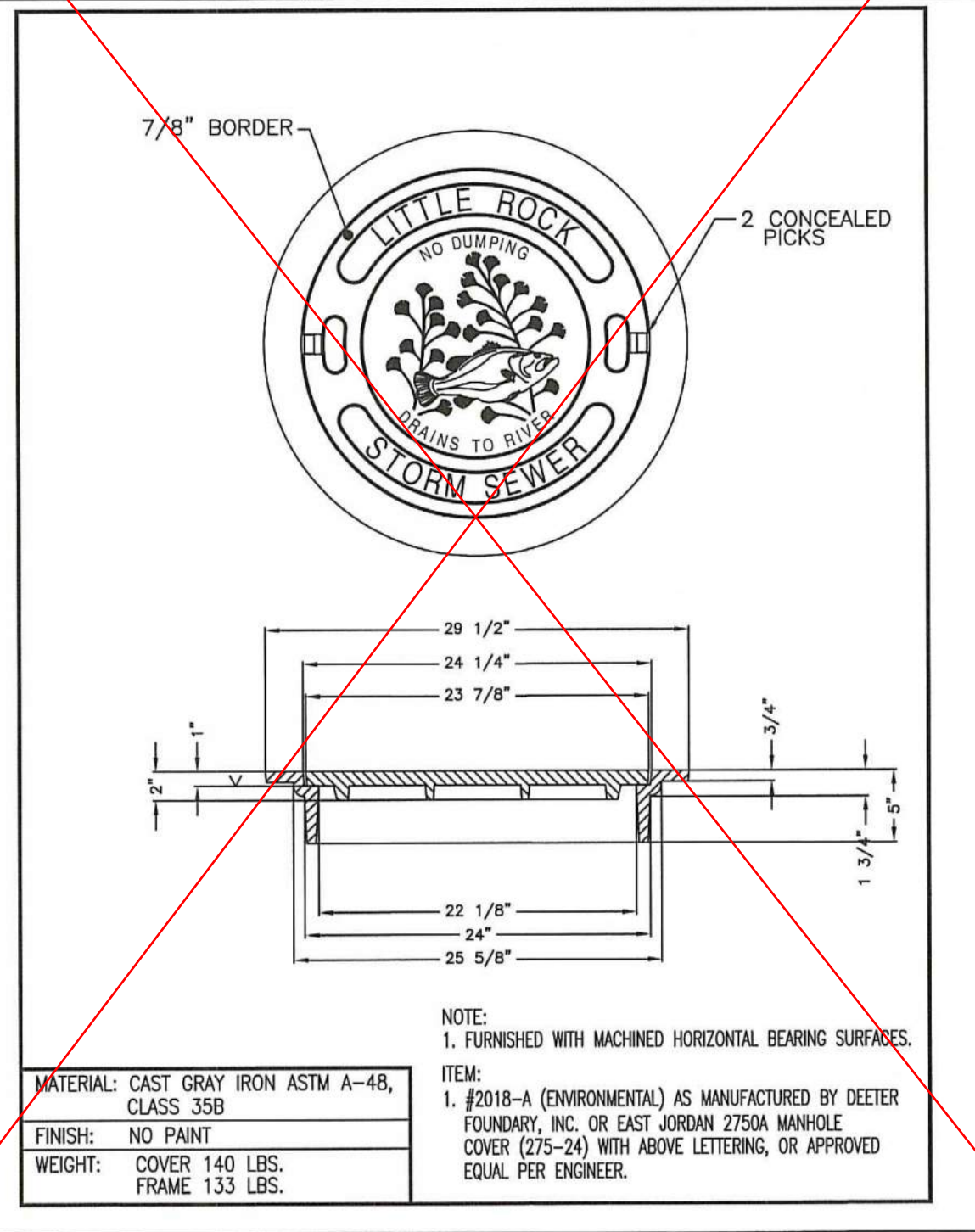


Material for pedestrian handrail shall be A313/16, 304 or 316 and shall be painted (black). Nuts & washers shall be stainless steel as noted on details.



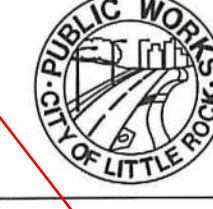
TITLE
MANHOLE FRAME & COVER

Issue Date	PW-13
AUG. 2006	Revision Date
	APR 2015



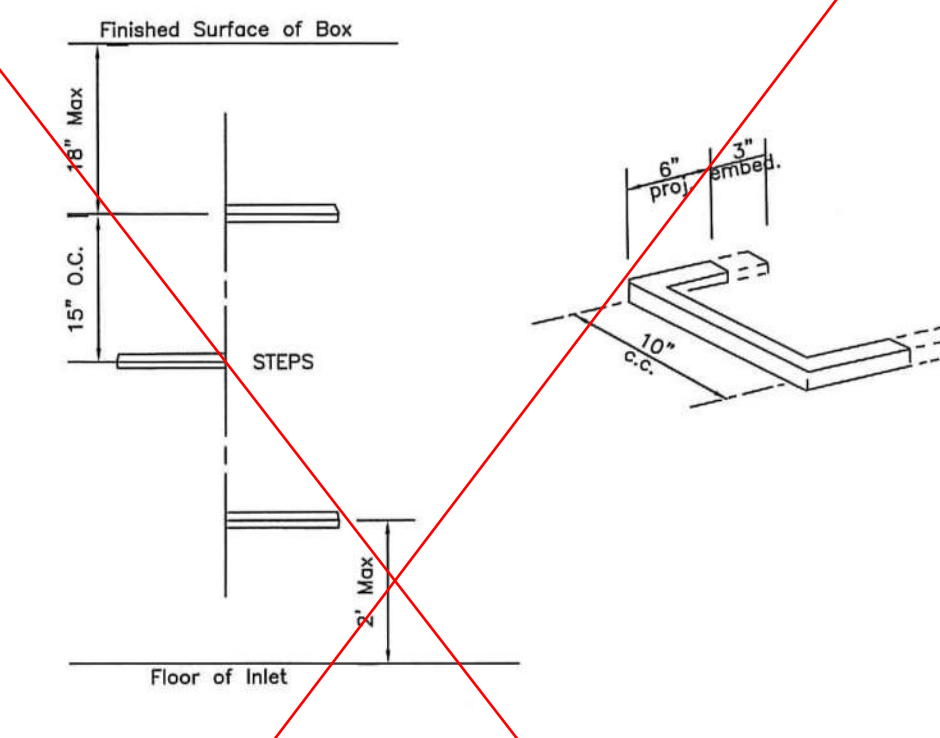
MATERIAL: CAST GRAY IRON ASTM A-48, CLASS 35B
FINISH: NO PAINT
WEIGHT: COVER 140 LBS. FRAME 133 LBS.

ITEM: 1. #2019-A (ENVIRONMENTAL) AS MANUFACTURED BY DEETER FOUNDRY, INC. OR EAST JORDAN 2750A MANHOLE COVER (275-24) WITH ABOVE LETTERING, OR APPROVED EQUAL PER ENGINEER.



TITLE
CURB INLET STEPS

Issue Date	PW-12
AUG. 2006	Revision Date
	APR 2015



- A. Manhole steps: corrosion resistant, coated, and reinforced with steel per ASTM C-478. Steel reinforcing minimum 1/2" diameter.
- B. Acceptable Manufacturers:
- Utility Products Inc. Permo Step 100-2
 - ICM Inc. Polypropylene coated steps.
 - MA Industries, Inc. Polypropylene coated steps. #PSI-PF
 - BOWCO, by H. Bowen Co.
- C. Capable of supporting minimum 300 lb. load.
- D. Non-Slip textured treads.
- E. Required in all structures 3'-0" deep or greater.



VICINITY MAP
N.T.S.

REVISIONS:	DATE
DESCRIPTION	
NO.	

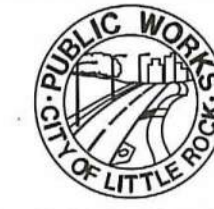
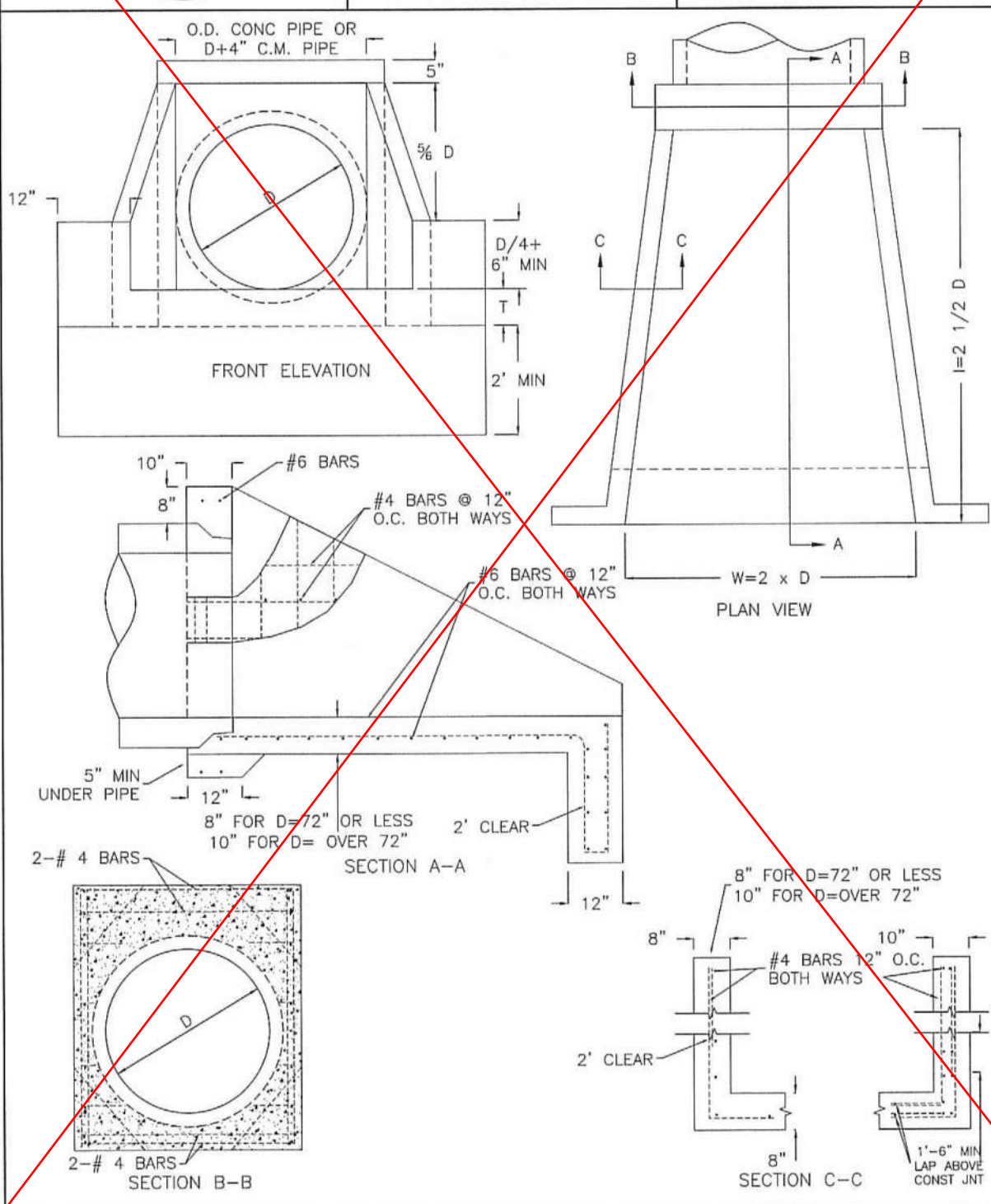
Details

Site Development For:
Dollar General of Alexander, AR
Viny Ridge Road
PG General Holdings (Alexander), LLC
5110 Talley Road
Little Rock, AR 72204
(501) 219-8899



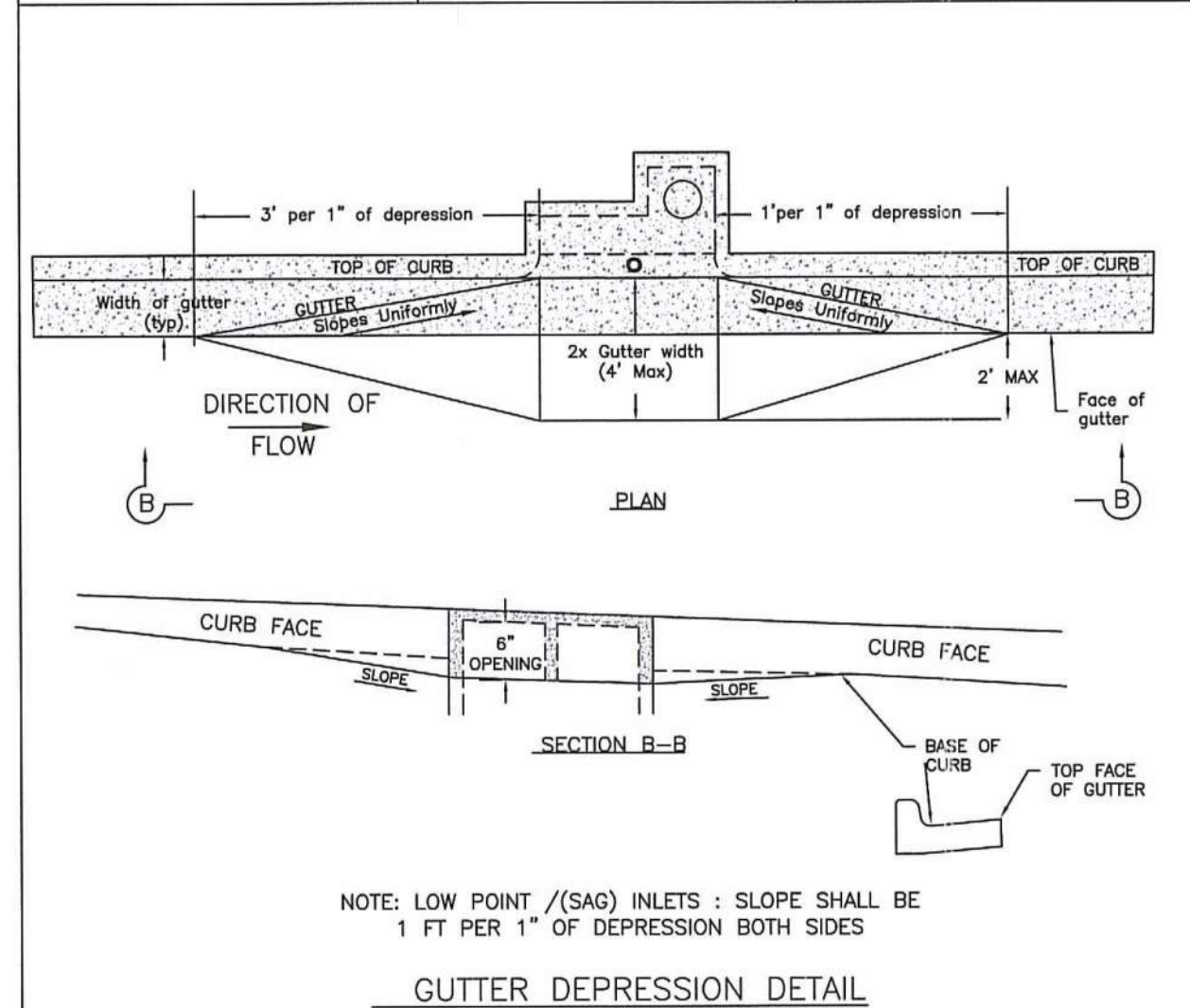
TITLE
HEAD WALL DETAIL

Issue Date	PW-4
APR 2015	Revision Date



TITLE
GUTTER DEPRESSION
DETAIL
TYPICAL DEPRESSION IS 4"

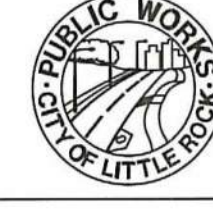
Issue Date	PW-3
02/15	Revision Date
	APR 2015



NOTE: LOW POINT (SAG) INLETS : SLOPE SHALL BE 1 FT PER 1" OF DEPRESSION BOTH SIDES

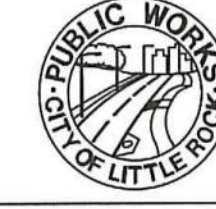
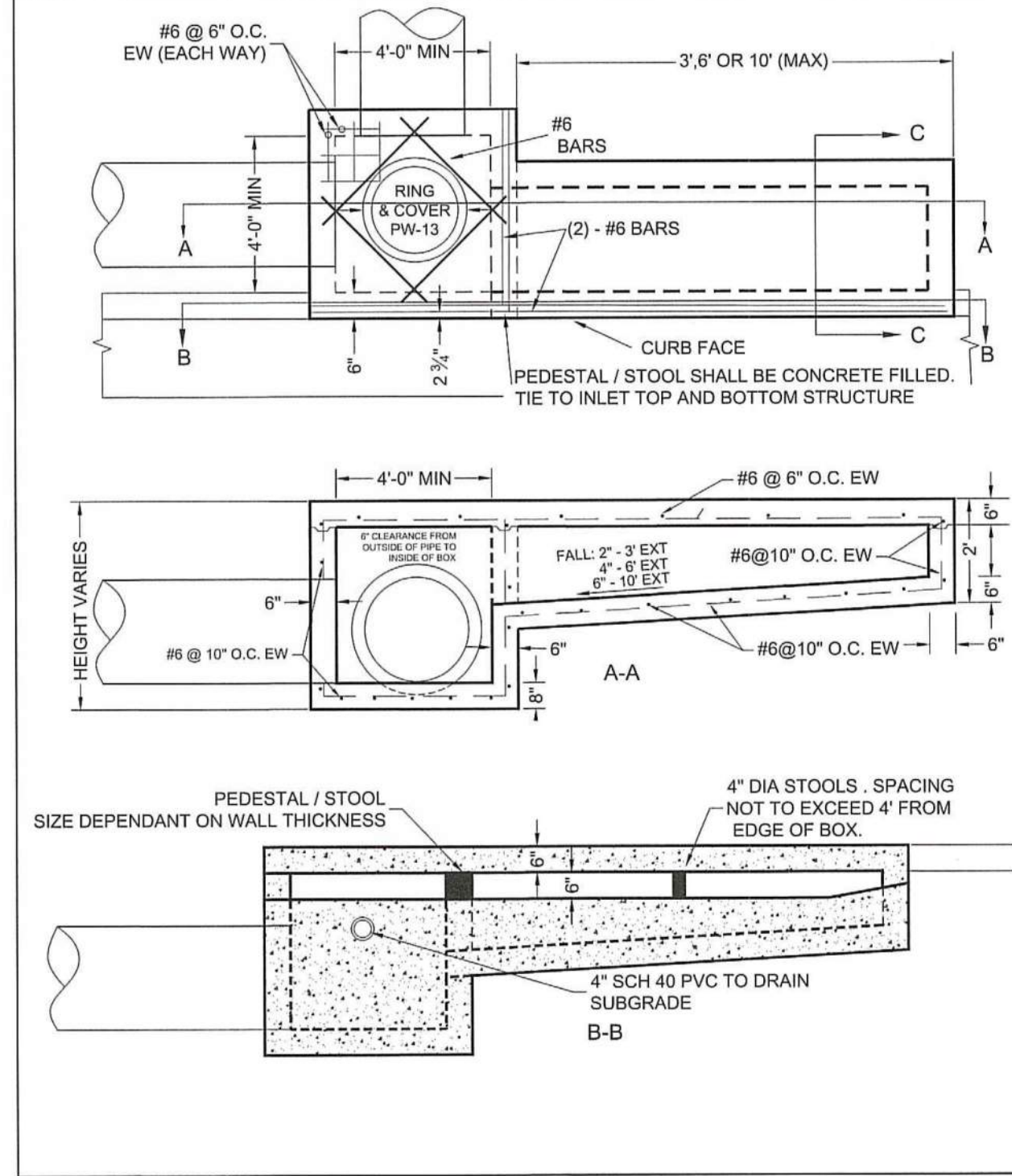
GUTTER DEPRESSION DETAIL

NOTE: THE TOP FACE OF GUTTER SHALL DROP 1/2" OF THE GUTTER DEPRESSION ACROSS THE INLET OPENING.



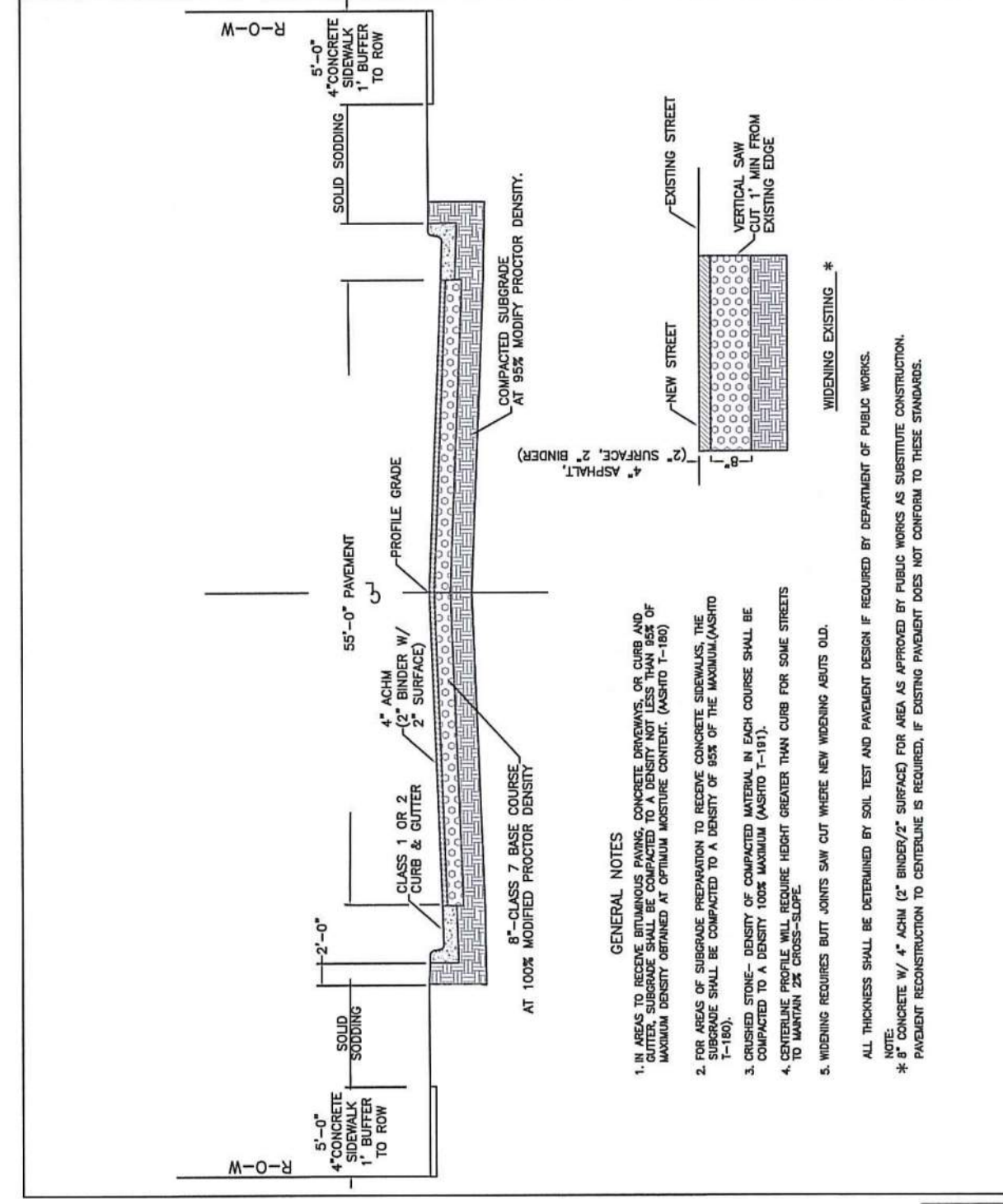
TITLE
RECTANGULAR CURB INLET
WITH THROAT EXTENSIONS

Issue Date	PW-1A
APR 2015	Revision Date



TITLE
TYPICAL SECTION
MINOR ARTERIAL STREET

Issue Date	PW-24
AUG. 2006	Revision Date
	APR 2015



BLEW & ASSOCIATES, PA
CIVIL ENGINEERS & LAND SURVEYORS
524 W. SYCAMORE ST, SUITE 4
FAYETTEVILLE, ARKANSAS 72703
OFFICE: 479.443.4506
FAX: 479.582.1883
www.BLEWINC.com

Certificate of Authorization No 1534

DRAWN BY:	JOE ORR	JOB NUMBER:	19-4866
SUBMITTAL DATE:	2019-12-18	SCALE:	As Noted
DRAWING NAME:	19-4866 Details.002.dwg		