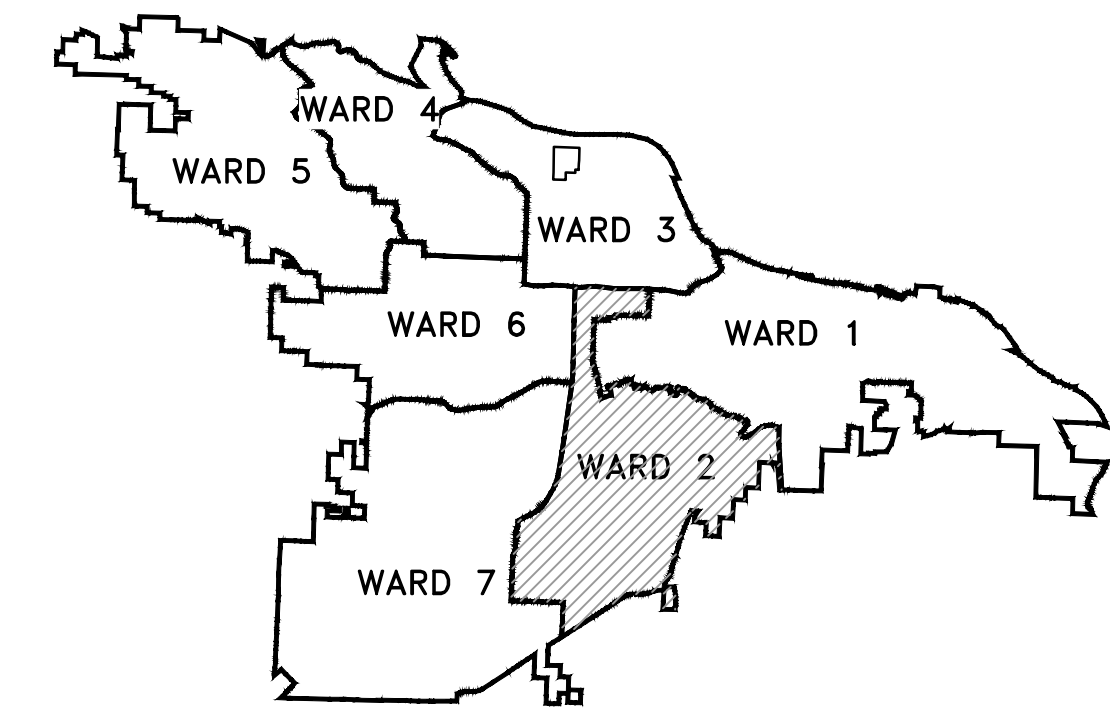


Project 02-17-DR-65

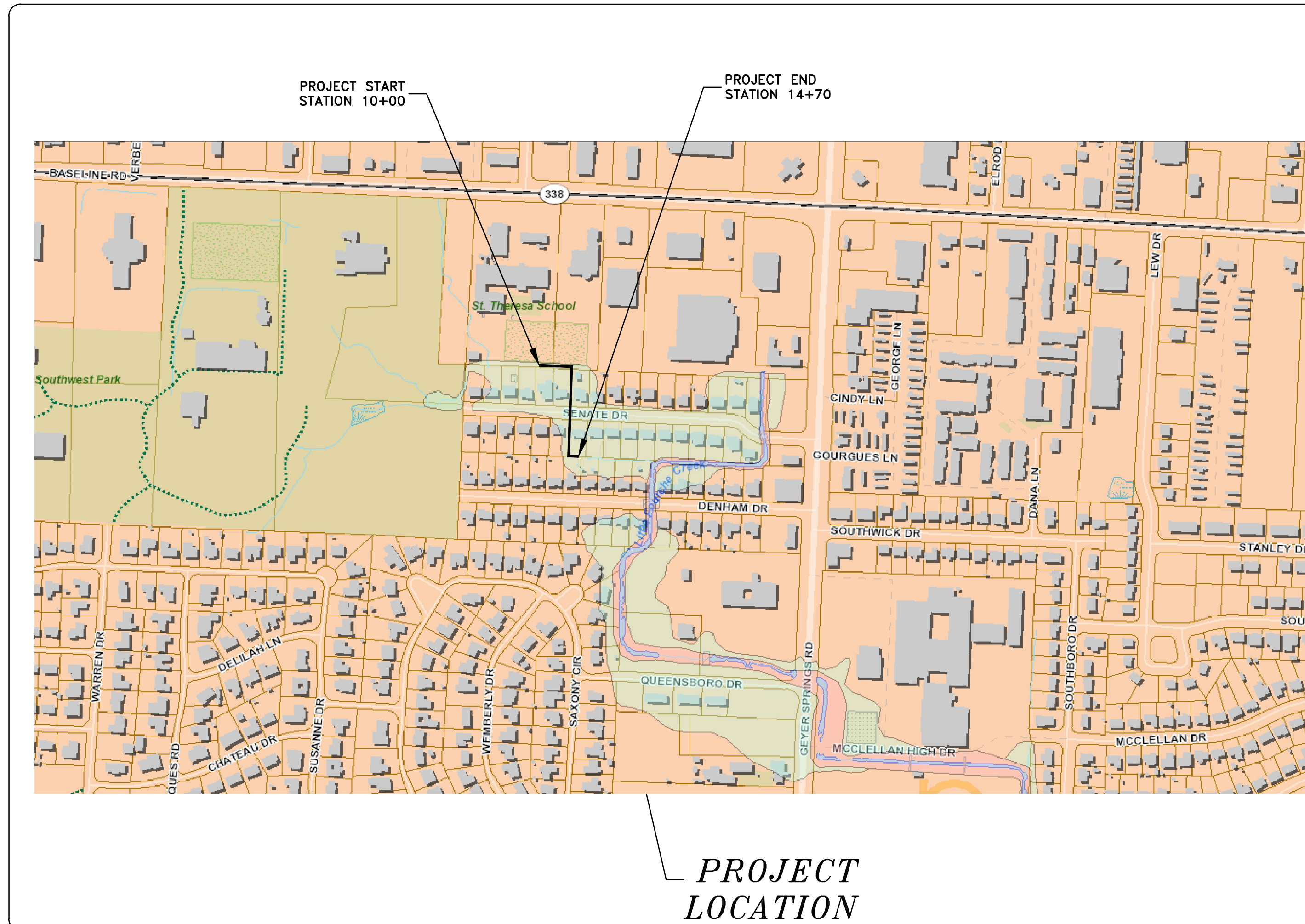
SENATE DRIVE DRAINAGE IMPROVEMENTS

REVISIONS	DATE

CITY OF LITTLE ROCK, ARKANSAS
SENATE DRIVE DRAINAGE IMPROVEMENTS
COVER SHEET

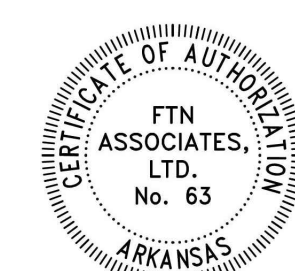


PROJECT LOCATION - WARD 2



SHEET NO.	TITLE
C1	COVER SHEET
C2	LEGEND & QUANTITIES
C3	CHANNEL PLAN & PROFILE
C4	TYPICAL SECTION & SPECIAL DETAILS
C5	ROADWAY PLAN AND PROFILE
C6	CULVERT DETAILS
C7	SEWER PLAN & PROFILE
C8	WATER PLAN & DETAILS
C9	PROPERTY OWNERSHIP AND FIELD TIES / LAYOUT SHEET
C10	EROSION CONTROL PHASE 1
C11	EROSION CONTROL PHASE 2
C12	EROSION CONTROL PHASE 3
C13	MAINTENANCE OF TRAFFIC PLAN

100%
SUBMITTAL



2019-2021
BOND PROGRAM

DEPARTMENT OF PUBLIC WORKS
CIVIL ENGINEERING
701 WEST MARKHAM STREET
LITTLE ROCK, ARKANSAS 72201

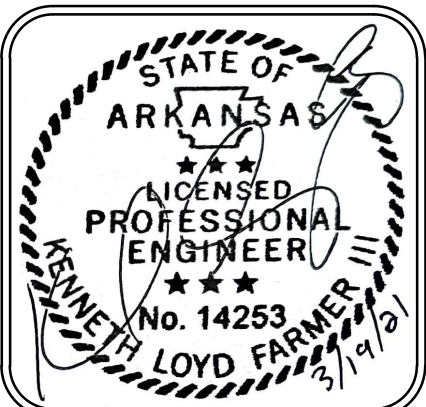


Know what's below.
Call before you dig.



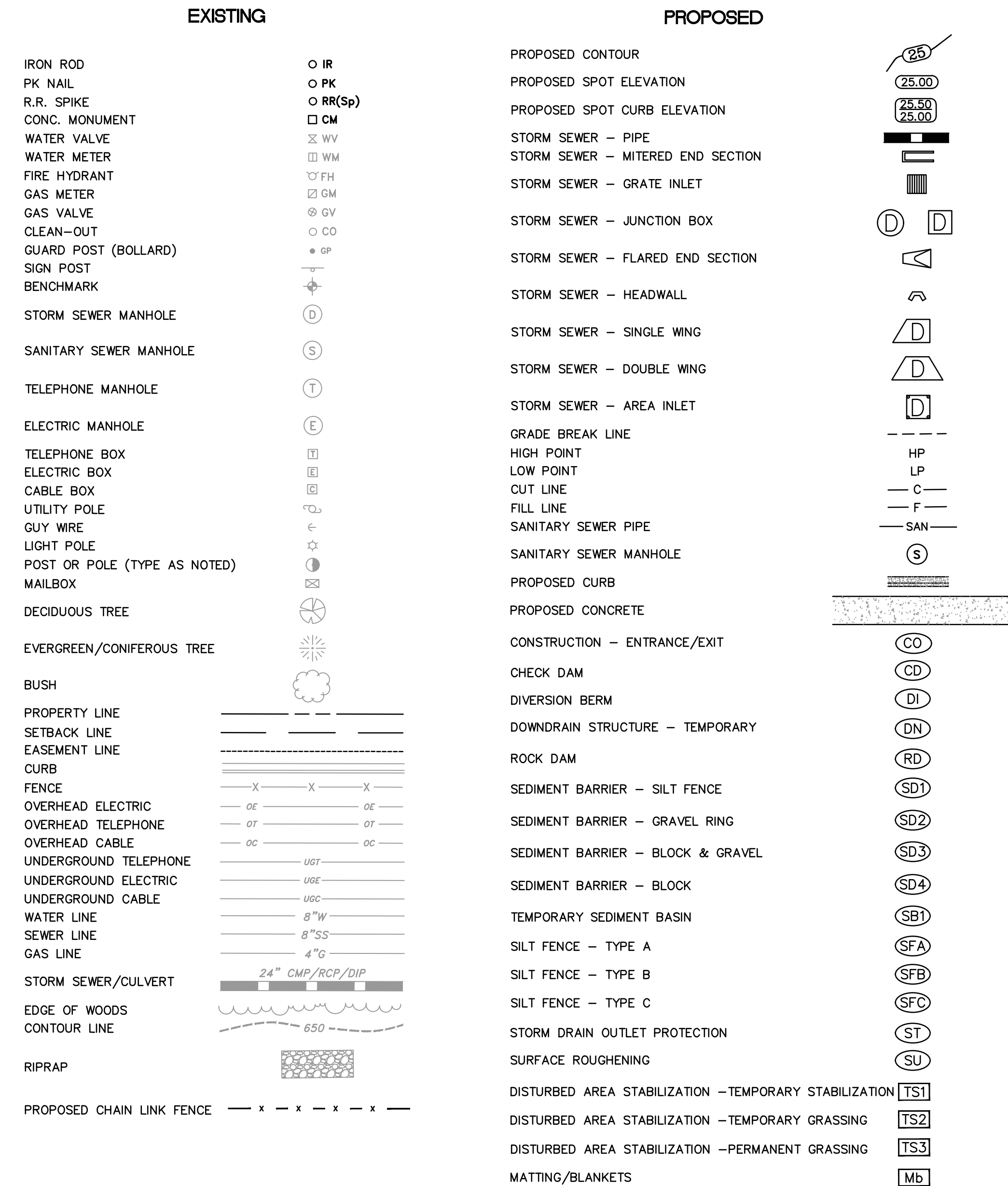
water resources / environmental consultants
3 Inwood Circle, Suite 220
Little Rock, Arkansas 72211
FTN Project No. 04010-1938-001

DEPARTMENT OF PUBLIC WORKS
CIVIL ENGINEERING
701 W. MARKHAM
LITTLE ROCK, ARKANSAS 72201



DRAWN BY	JWM
DESIGNED	KLF
CHECKED	KLF
DATE	03/19/21
SCALE	N.T.S.
PROJECT NO.	CLR 02-17-DR-65
SHEET NO.	C1

Senate Drive Drainage Improvements			
Final Design			
March 19, 2021			
ITEM #	ITEM DESCRIPTION	UNIT	QUANTITY
Senate Drive Drainage Improvements			
2.01	Site Preparation, Including Mobilization	LS	1
3.01	Unclassified Excavation	CY	500
3.06	Borrow Material	CY	20
4.01	Aggregate Base Course (Class 7)	TON	140
5.01	Tack Coat	GAL	15
6.01	ACHM Surface Course	TON	18
6.20	ACHM Binder Course	TON	18
8.03	Concrete Curb and Gutter (Class 4)	LF	86
9.03	Concrete Flume	SF	140
11.01	Reinforced Concrete Pre-Cast Box Culvert (6'x4')	LF	102
11.06	Reinforced Concrete Headwall, Wingwalls, Flowable Fill between Boxes	CY	20
11.10	Reinforced Concrete Channel	CY	135
14.02	Soil Sodding (Special, Includes 4" Topsoil)	SY	700
16.01	Maintenance of Traffic	LS	1
18.45	Grouted Riprap	CY	50
19.01	Final Cleanup	LS	1
24.05	Rock Dam	CY	20
25.04	Fence Chain Link (4')	LF	580
26.10	Trench and Excavation Safety	LS	1
28.00	Guard Rail	LF	68
28.01	Guard Rail Anchor Posts	EA	8
816.00	Filter Fabric	SY	800



REVISIONS	DATE

CITY OF LITTLE ROCK, ARKANSAS
SENATE DRIVE DRAINAGE IMPROVEMENTS
LEGEND & QUANTITIES

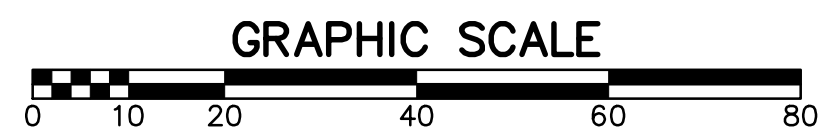
DEPARTMENT OF PUBLIC WORKS
CIVIL ENGINEERING
701 W. MARKHAM
LITTLE ROCK, ARKANSAS 72201



DRAWN BY JWM
DESIGNED KLF
CHECKED KLF
DATE 03/19/21
SCALE N.T.S.
PROJECT NO. CLR 02-17-DR-65
SHEET NO. C2

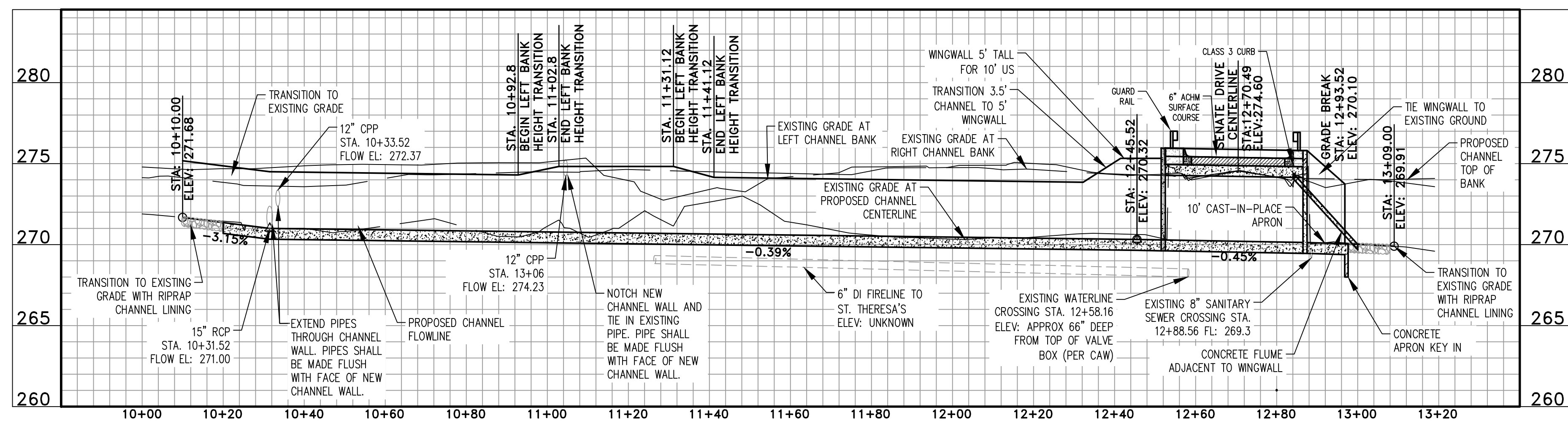
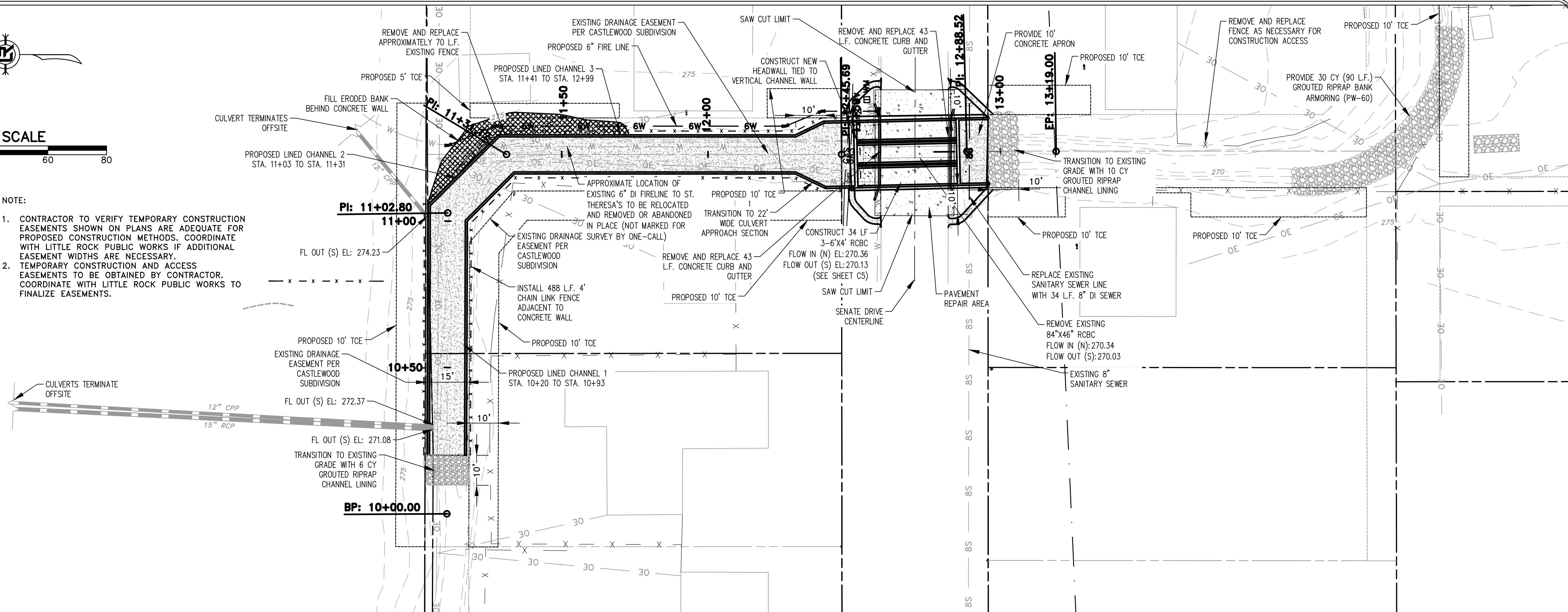
100%
SUBMITTAL





NOTE:

1. CONTRACTOR TO VERIFY TEMPORARY CONSTRUCTION EASEMENTS SHOWN ON PLANS ARE ADEQUATE FOR PROPOSED CONSTRUCTION METHODS. COORDINATE WITH LITTLE ROCK PUBLIC WORKS IF ADDITIONAL EASEMENT WIDTHS ARE NECESSARY.
2. TEMPORARY CONSTRUCTION AND ACCESS EASEMENTS TO BE OBTAINED BY CONTRACTOR. COORDINATE WITH LITTLE ROCK PUBLIC WORKS TO FINALIZE EASEMENTS.



100%
SUBMITTAL



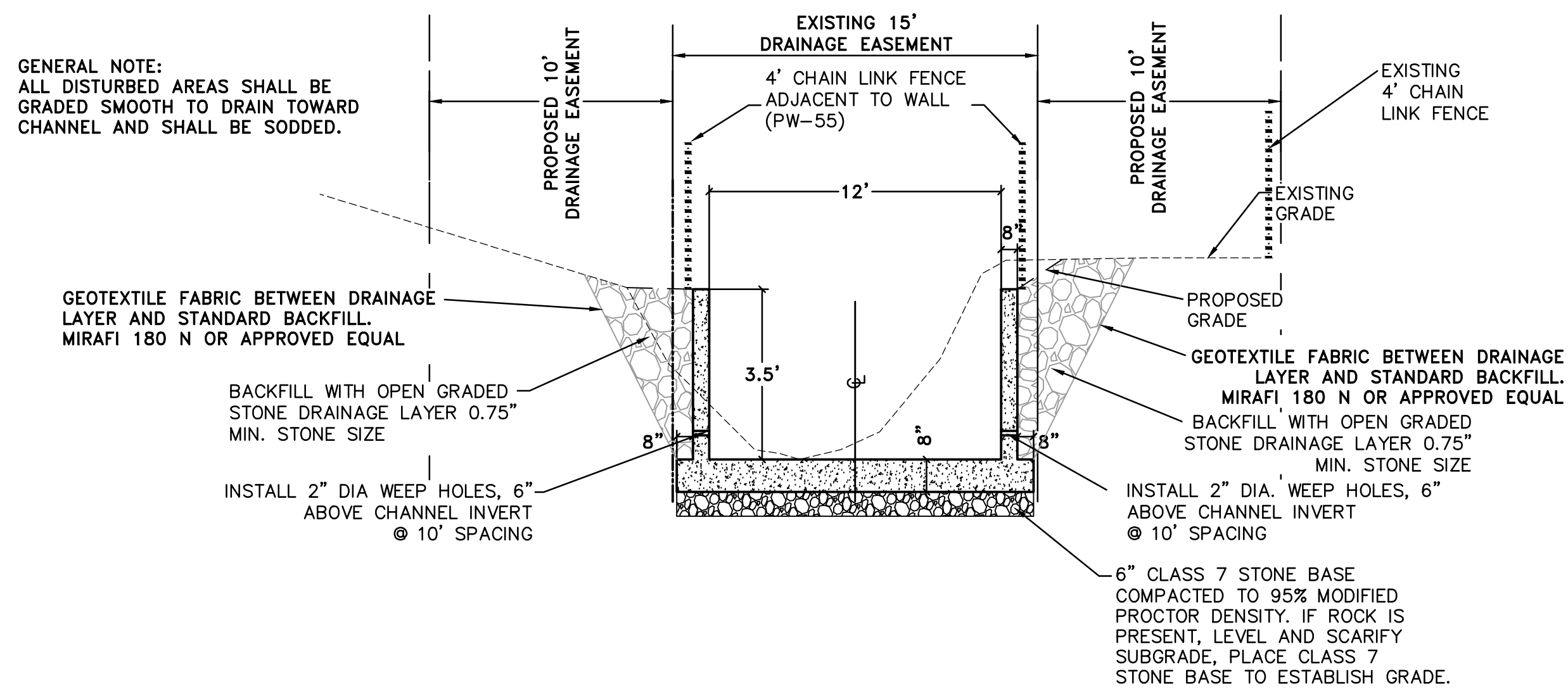
REVISIONS	DATE

CITY OF LITTLE ROCK, ARKANSAS
SENATE DRIVE DRAINAGE IMPROVEMENTS
PROPOSED CHANNEL
PLAN - PROFILE
STA. 10+00 TO 13+19

DEPARTMENT OF PUBLIC WORKS
CIVIL ENGINEERING
701 W. MARKHAM
LITTLE ROCK, ARKANSAS 72201

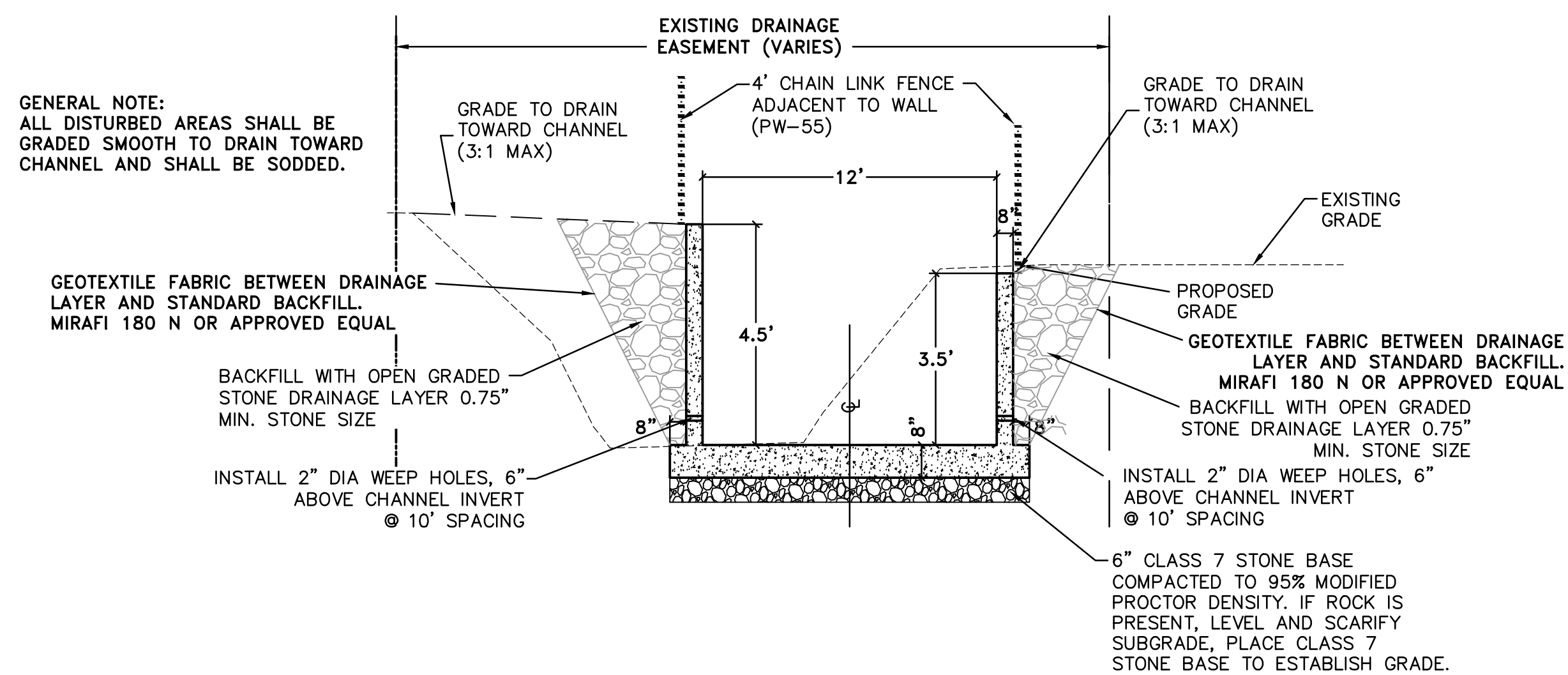


DRAWN BY
JWM
DESIGNED
KLF
CHECKED
KLF
DATE
03/19/21
SCALE
1"=20'
PROJECT NO.
CLR 02-17-DR-65
SHEET NO.
C3



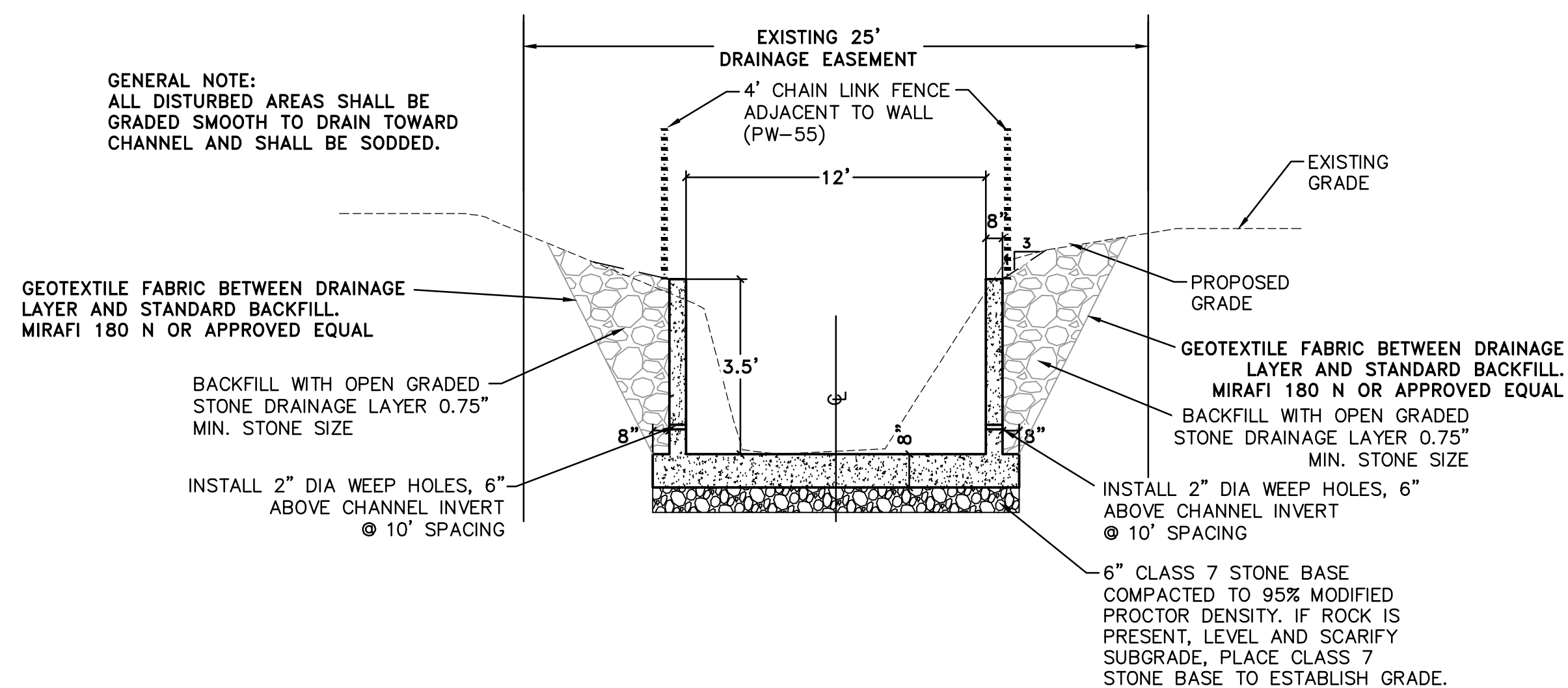
TYPICAL SECTION - PROPOSED LINED CHANNEL 1

Sta 10+20 to 10+93



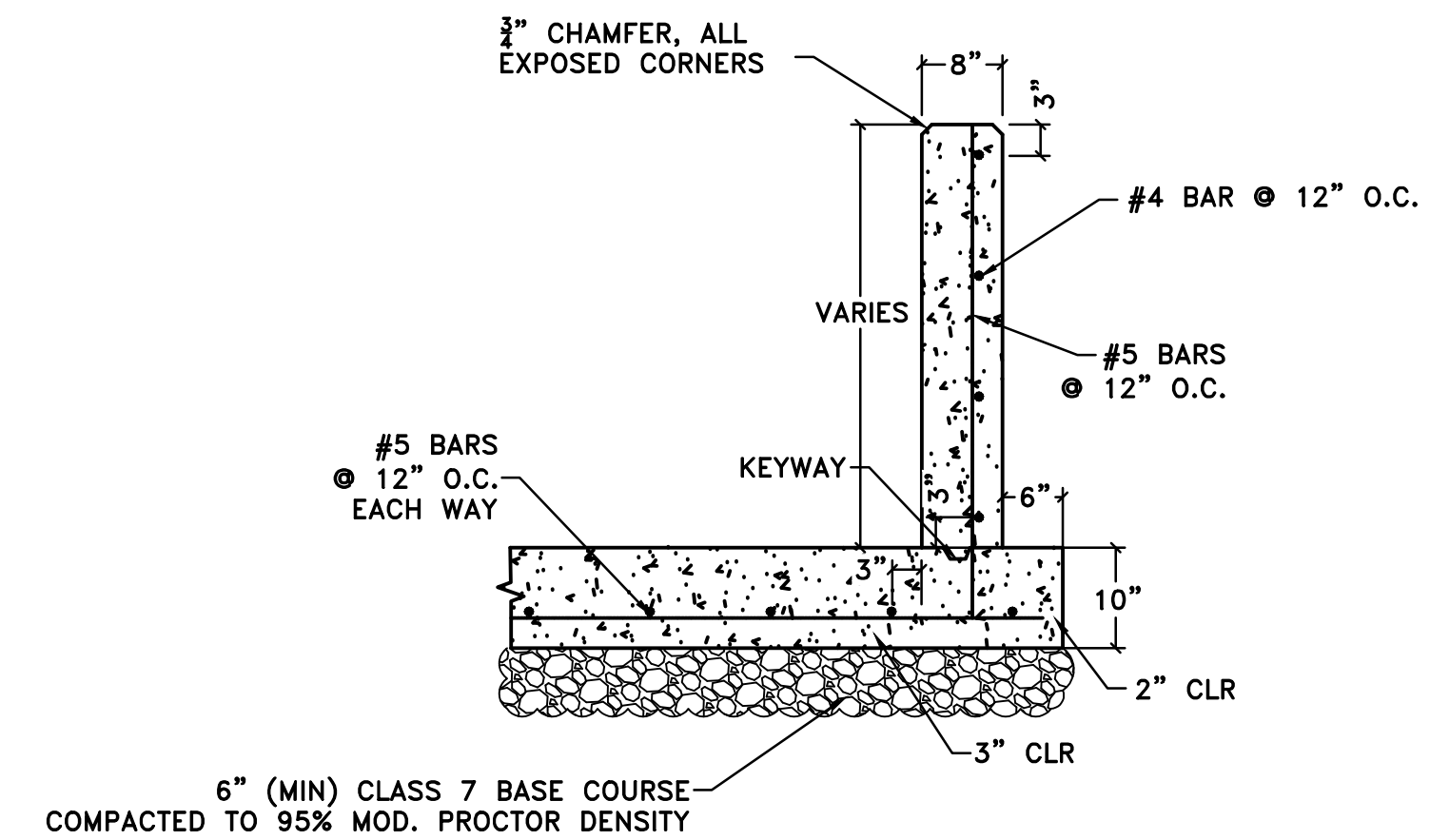
TYPICAL SECTION - PROPOSED LINED CHANNEL 2

Sta 11+03 to 11+31

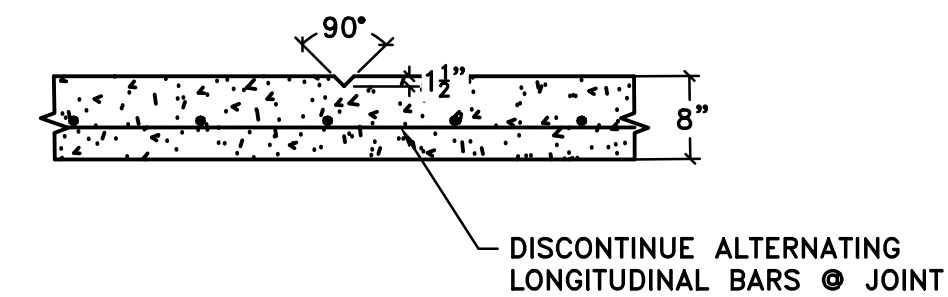


TYPICAL SECTION - PROPOSED LINED CHANNEL 3

Sta 11+41 to 12+99

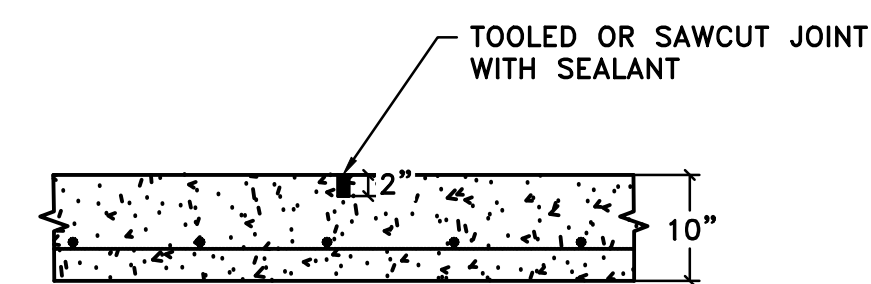


TYPICAL REINFORCEMENT - CONCRETE CHANNEL

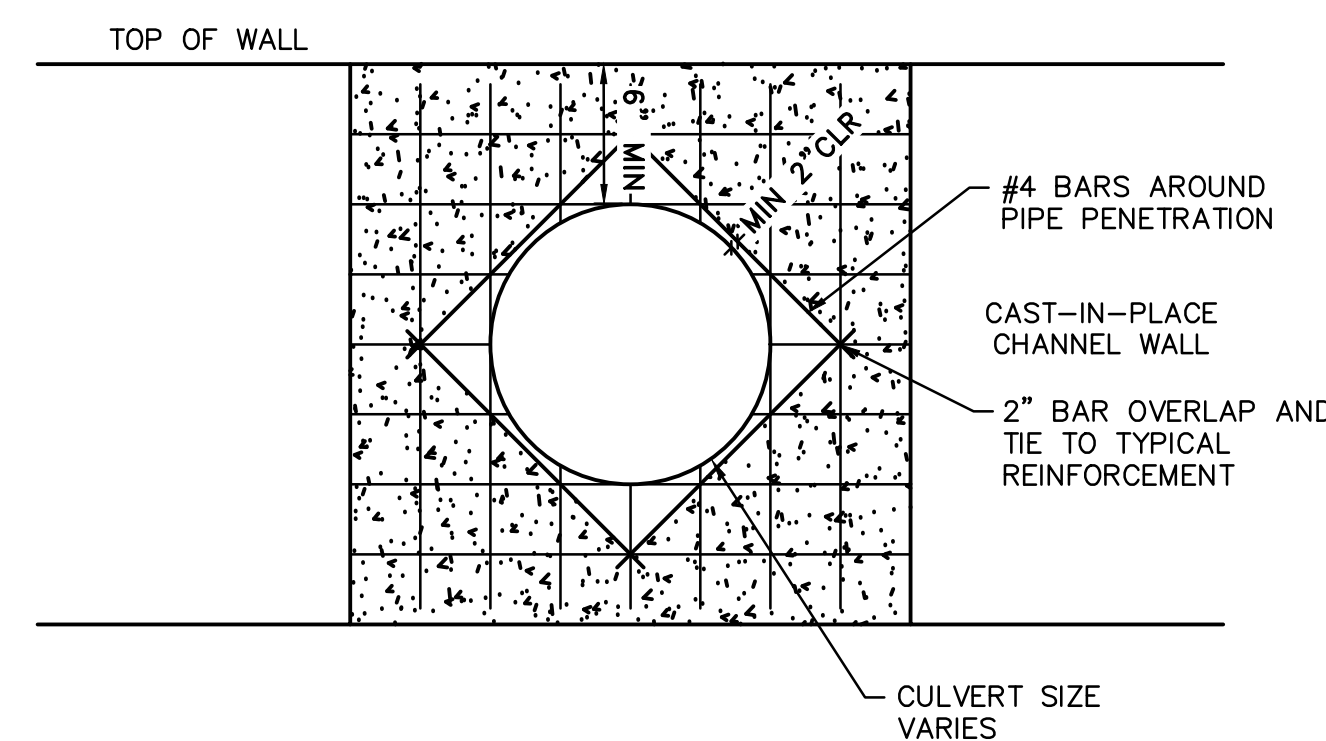


PLAN VIEW CONTROL JOINT (FACE OF WALL)

NOTE:
WEEP HOLES BETWEEN JOINTS



SECTION CONTROL JOINT (CHANNEL BOTTOM)



TYPICAL REINFORCEMENT - PIPE PENETRAT

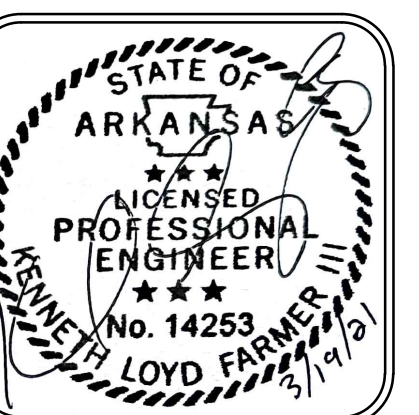
100%
SUBMITTAL



REVISIONS	DATE

CITY OF LITTLE ROCK, ARKANSAS
SENATE DRIVE DRAINAGE IMPROVEMENTS
TYPICAL SECTIONS & SPECIAL DETAILS

DEPARTMENT OF PUBLIC WORKS
CIVIL ENGINEERING
701 W. MARKHAM
LITTLE ROCK, ARKANSAS 72201

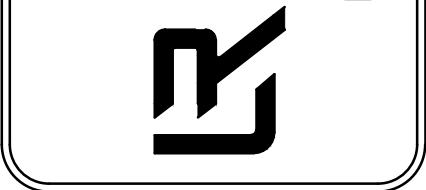


DRAWN BY
JWM
DESIGNED
KLF
CHECKED
KLF
DATE
03/19/21
SCALE
AS SHOWN
PROJECT NO.
CLR #02-17-DR-65
SHEET NO.
C4

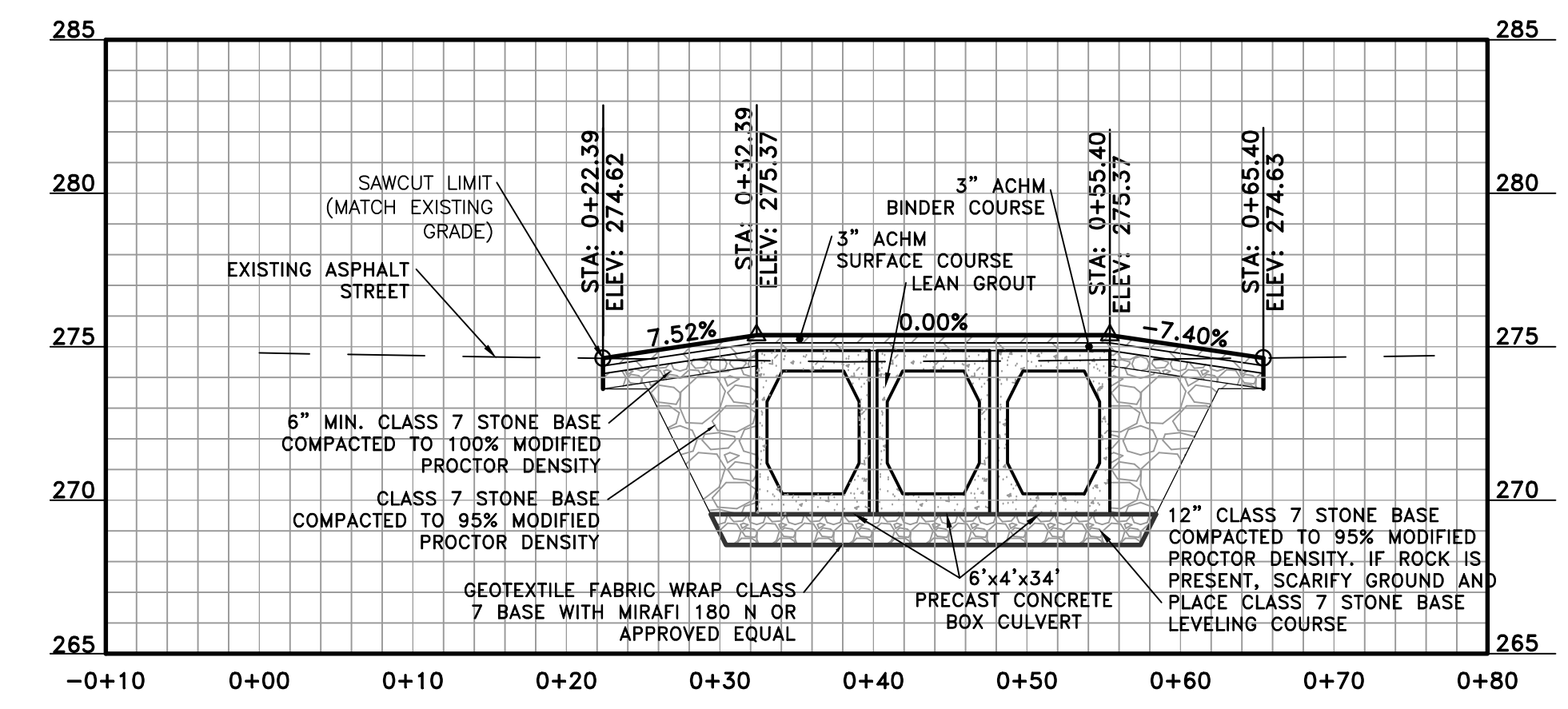
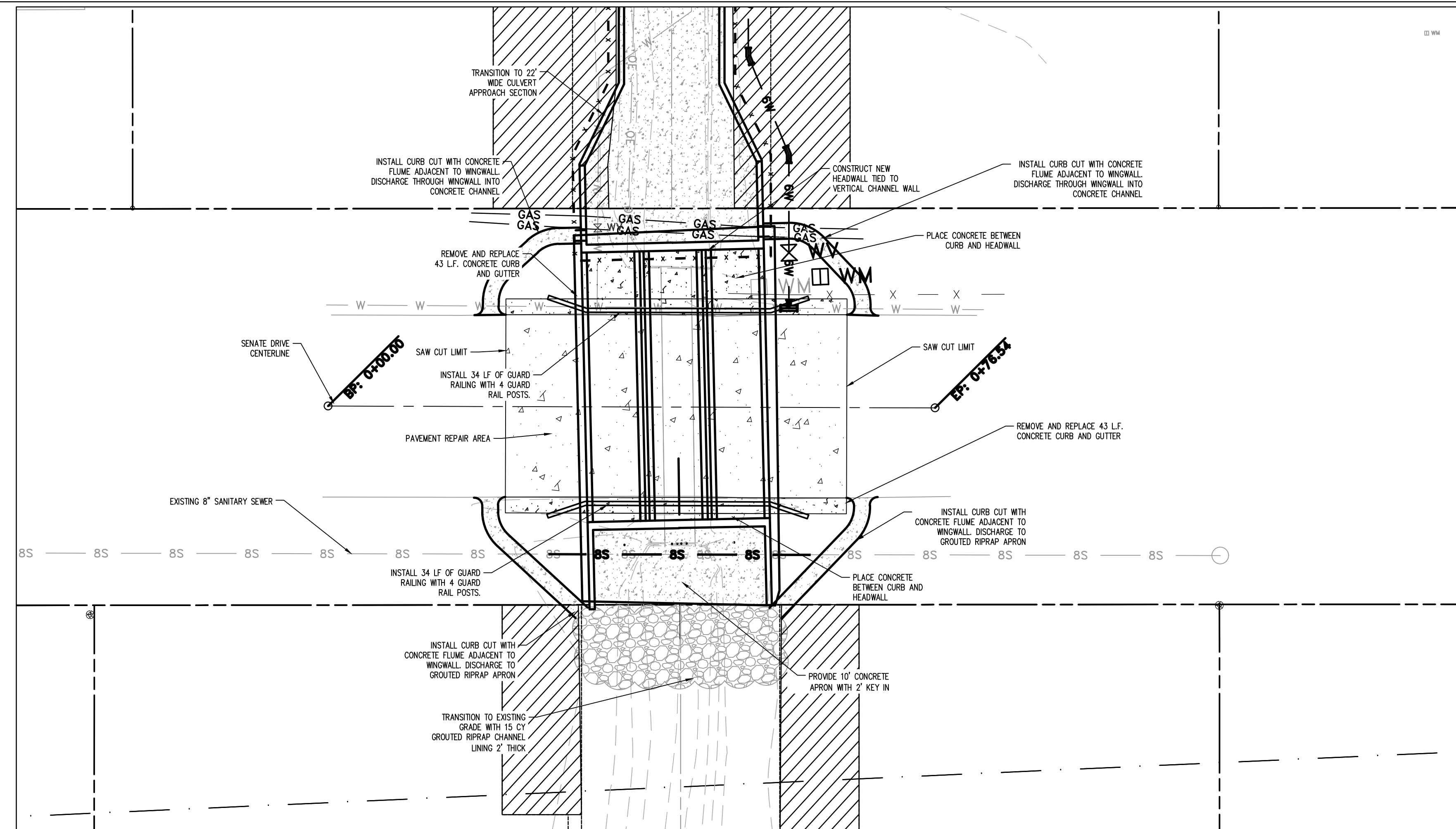
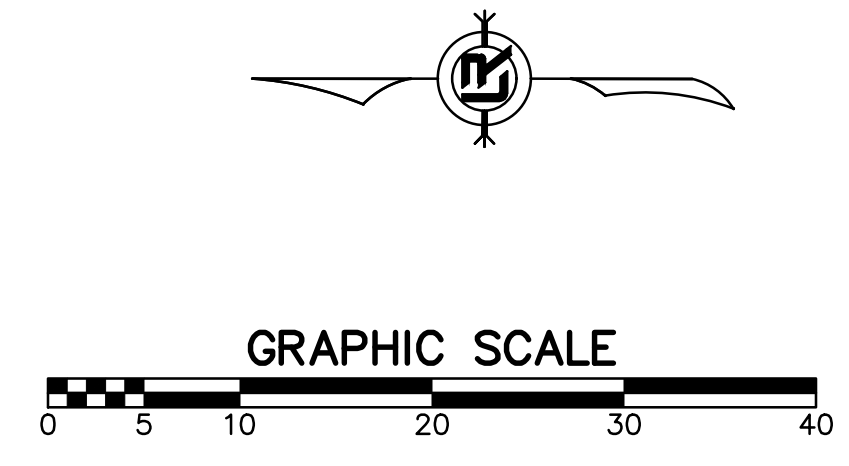
REVISIONS	DATE

CITY OF LITTLE ROCK, ARKANSAS
SENATE DRIVE DRAINAGE IMPROVEMENTS
ROADWAY PLAN AND PROFILE

DEPARTMENT OF PUBLIC WORKS
 CIVIL ENGINEERING
 701 W. MARKHAM
 LITTLE ROCK, ARKANSAS 72201



DRAWN BY
CKS
DESIGNED
KLF
CHECKED
KLF
DATE
03/19/21
SCALE
1"=5'
PROJECT NO.
CLR #02-17-DR-65
SHEET NO.
C5



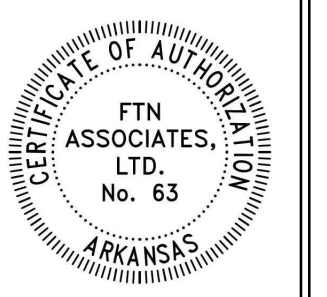
LEAN GROUT REQUIREMENTS:

1. PORTLAND CEMENT SHALL BE TYPE 1 AND SHALL MEET THE REQUIREMENTS OF AASHTO M 85.
2. SAND SHALL MEET THE REQUIREMENTS OF ASTM C 33 FINE AGGREGATE.
3. THE SAND CEMENT MIXTURE SHALL CONSIST OF NOT LESS THAN 1.5 SACKS OF PORTLAND CEMENT PER TON OF MATERIAL MIXTURE.
4. THE MIXTURE SHALL CONTAIN SUFFICIENT WATER TO HYDRATE THE CEMENT.
5. THE SAND CEMENT MIXTURE SHALL BE PLACED IN MAXIMUM 8 INCH THICK LIFTS, LOOSE MEASURE, AND RODDED AND TAMPED AROUND BOX TO THOROUGHLY FILL VOIDS.

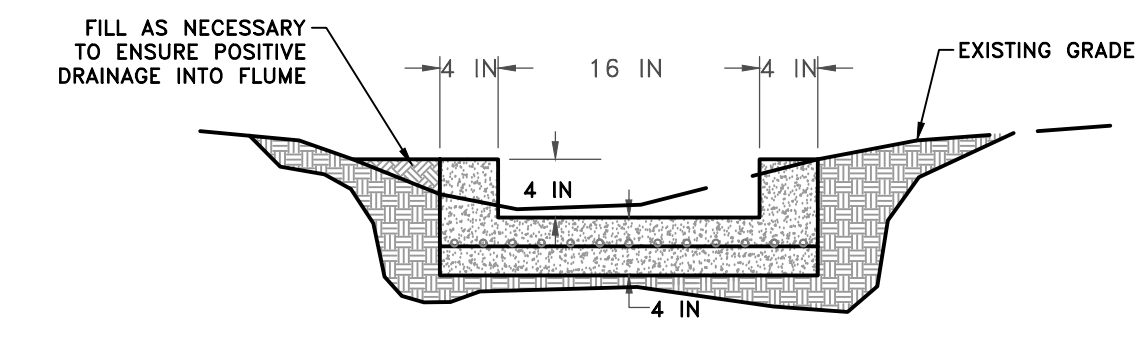
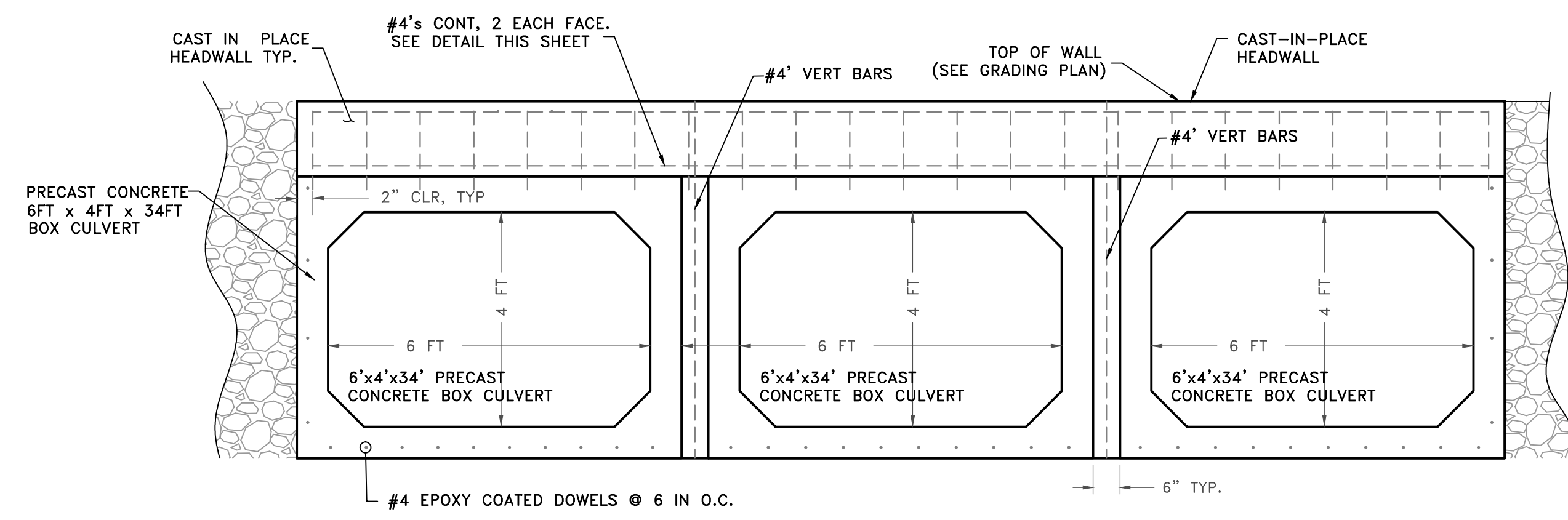
NOTE:

1. PRECAST REINFORCED CONCRETE BOX CULVERTS JOINTS SHALL BE INSTALLED WITH PREFORMED FLEXIBLE PLASTIC JOINT MATERIAL (RAM-NEK OR APPROVED EQUAL). INSTALL PREFORMED FLEXIBLE JOINT SEALANTS IN ACCORDANCE WITH THE MANUFACTURER'S RECOMMENDATIONS. PLACE THE JOINT SEALER SO THAT NO DIRT OR OTHER DELETERIOUS MATERIALS COME IN CONTACT WITH THE JOINT SEALING MATERIAL. PULL OR PUSH HOME THE CULVERT WITH ENOUGH FORCE TO PROPERLY SEAL THE JOINT. REMOVE ANY JOINT MATERIAL PUSHED OUT INTO THE INTERIOR OF THE PIPE THAT WOULD TEND TO OBSTRUCT THE FLOW. WHEN THE ATMOSPHERIC TEMPERATURE IS BELOW 60°F, STORE PREFORMED FLEXIBLE JOINT SEALANTS IN AN AREA WARMED TO ABOVE 70°F OR ARTIFICIALLY WARM TO THIS TEMPERATURE IN AN APPROVED MANNER. APPLY FLEXIBLE JOINT SEALANTS TO PIPE JOINTS IMMEDIATELY BEFORE PLACING PIPE IN TRENCH, AND THEN CONNECT PIPE TO PREVIOUSLY LAID PIPE. BACKFILL AFTER THE JOINT HAS BEEN INSPECTED AND APPROVED.

100%
SUBMITTAL



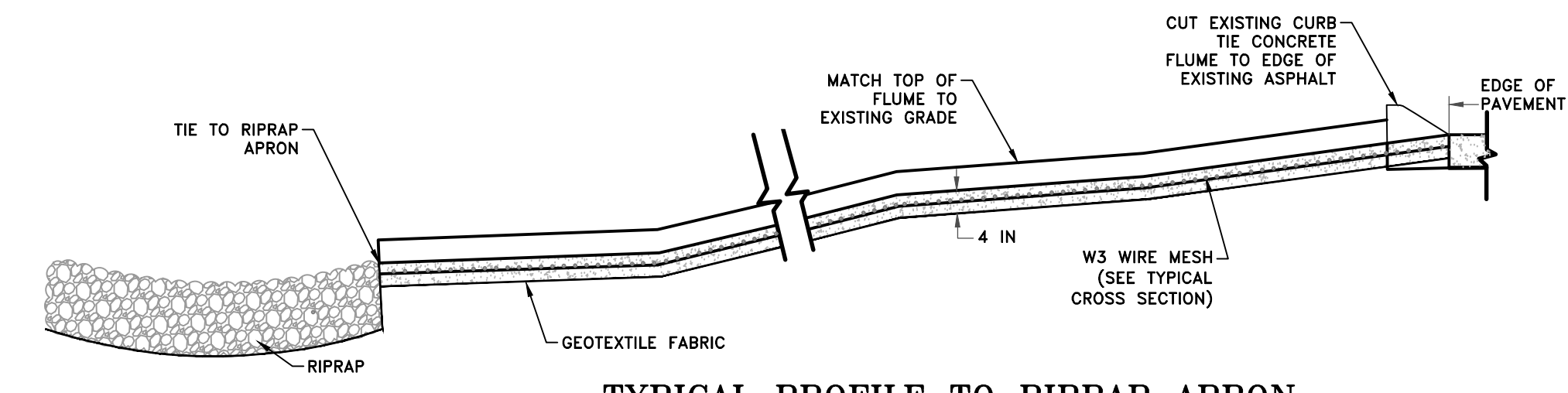
REVISIONS	DATE



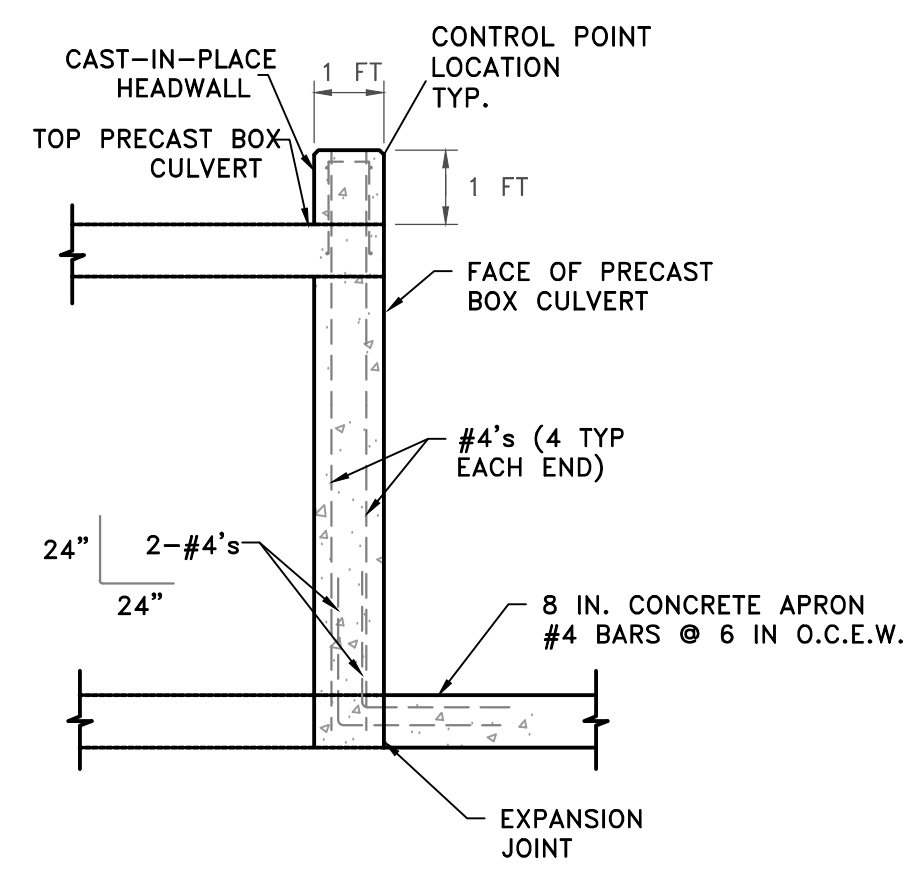
TYPICAL SECTION

CULVERT PROFILE VIEW - HEADWALL, WINGWALLS, AND APRON CONNECTIONS

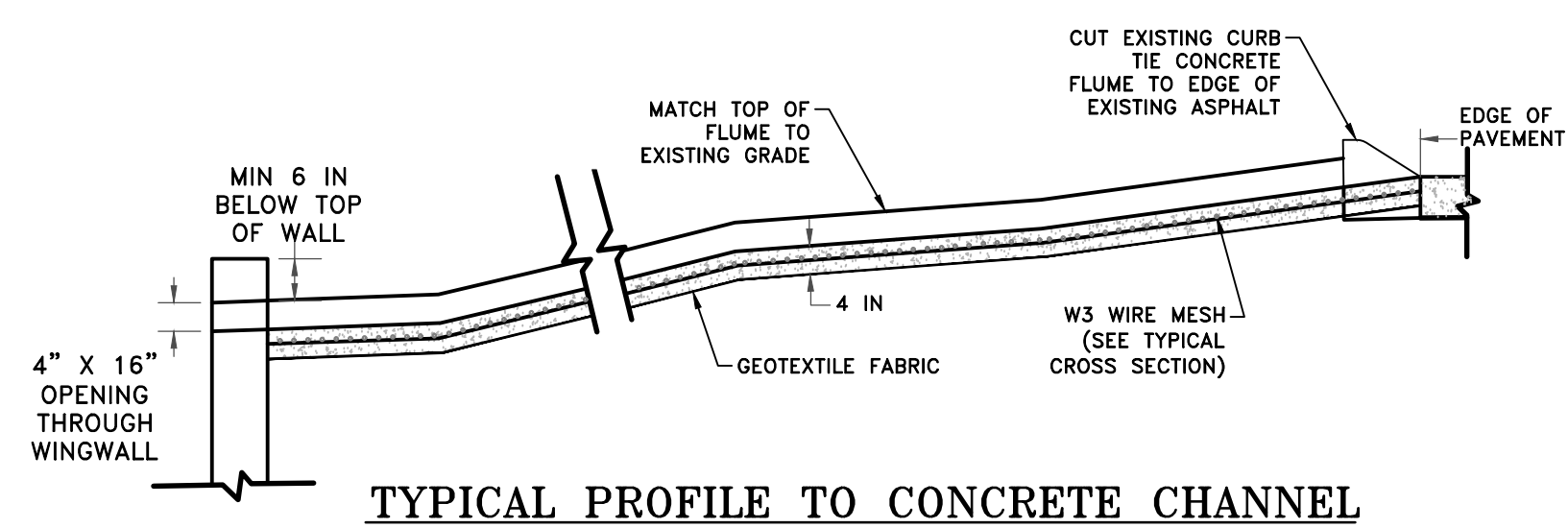
- GENERAL NOTES:**
1. WINGS, CURTAIN WALLS AND APRONS SHALL BE TIED TO THE PRECAST CULVERT SECTION BY #4 BARS CAST INTO PRECAST BOX CULVERT END SECTIONS AS SHOWN OR BY DOWELING AND GROUTING.
 2. ALL EXPOSED CORNERS SHALL HAVE 3/4" CHAMFERS.
 3. SEE GENERAL NOTES AND TECHNICAL SPECIFICATIONS FOR CONCRETE AND REINFORCING REQUIREMENTS.
 4. PROVIDE ARCHITECTURAL FINISH ALL EXPOSED VERTICAL FACES OF HEADWALLS AND WINGWALLS PER OWNER DIRECTION.



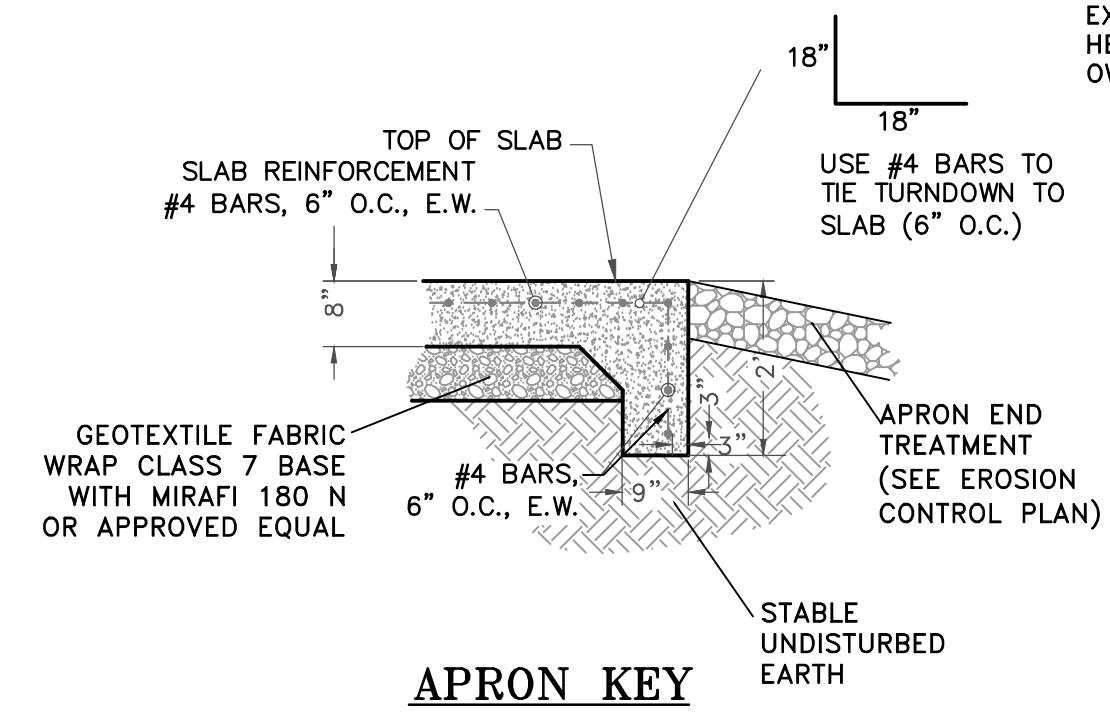
TYPICAL PROFILE TO RIPRAP APRON



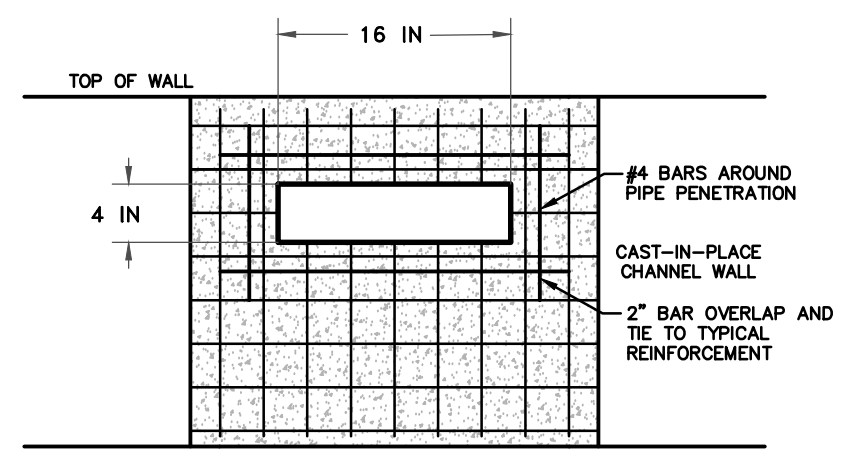
HEADWALL



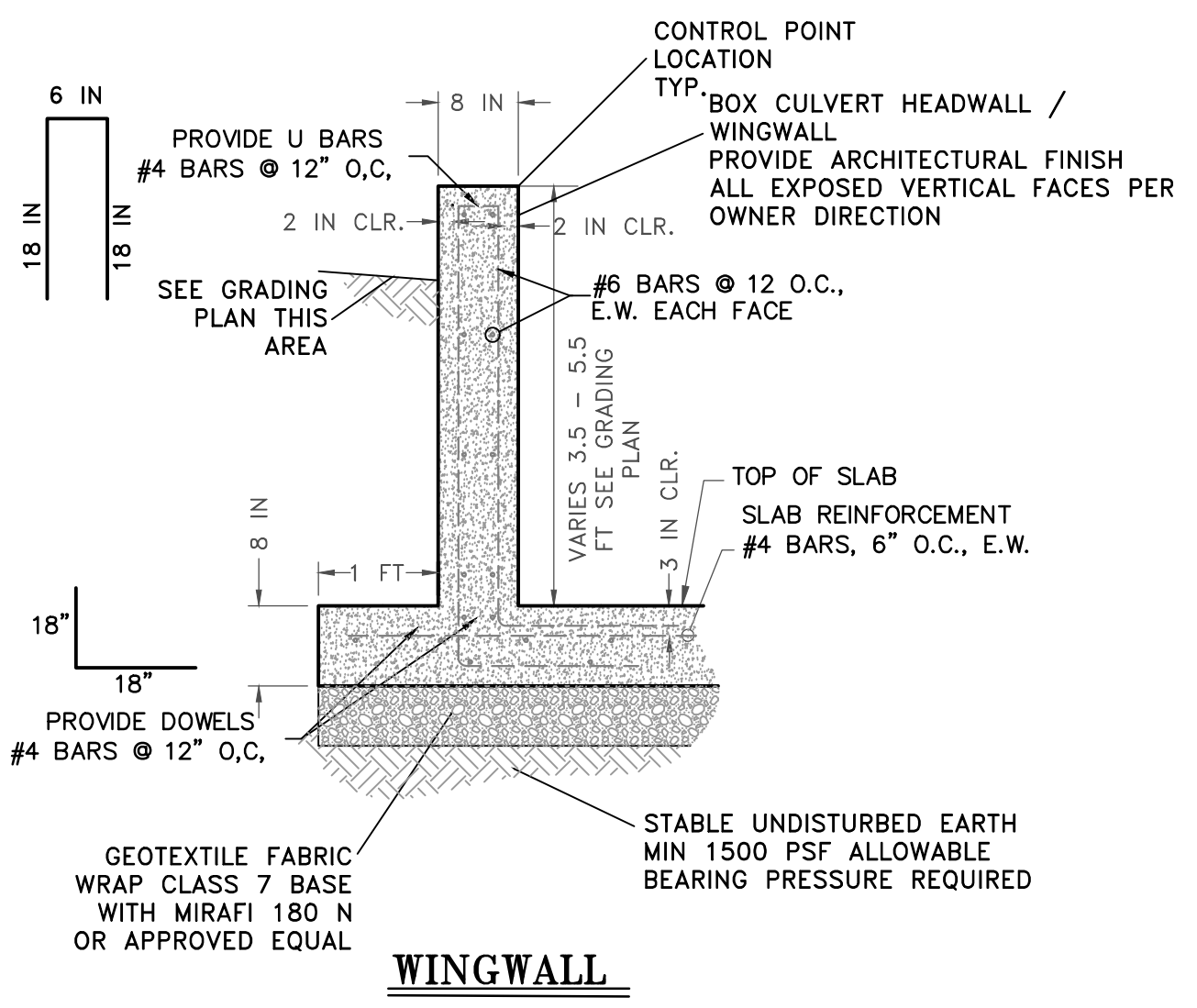
TYPICAL PROFILE TO CONCRETE CHANNEL



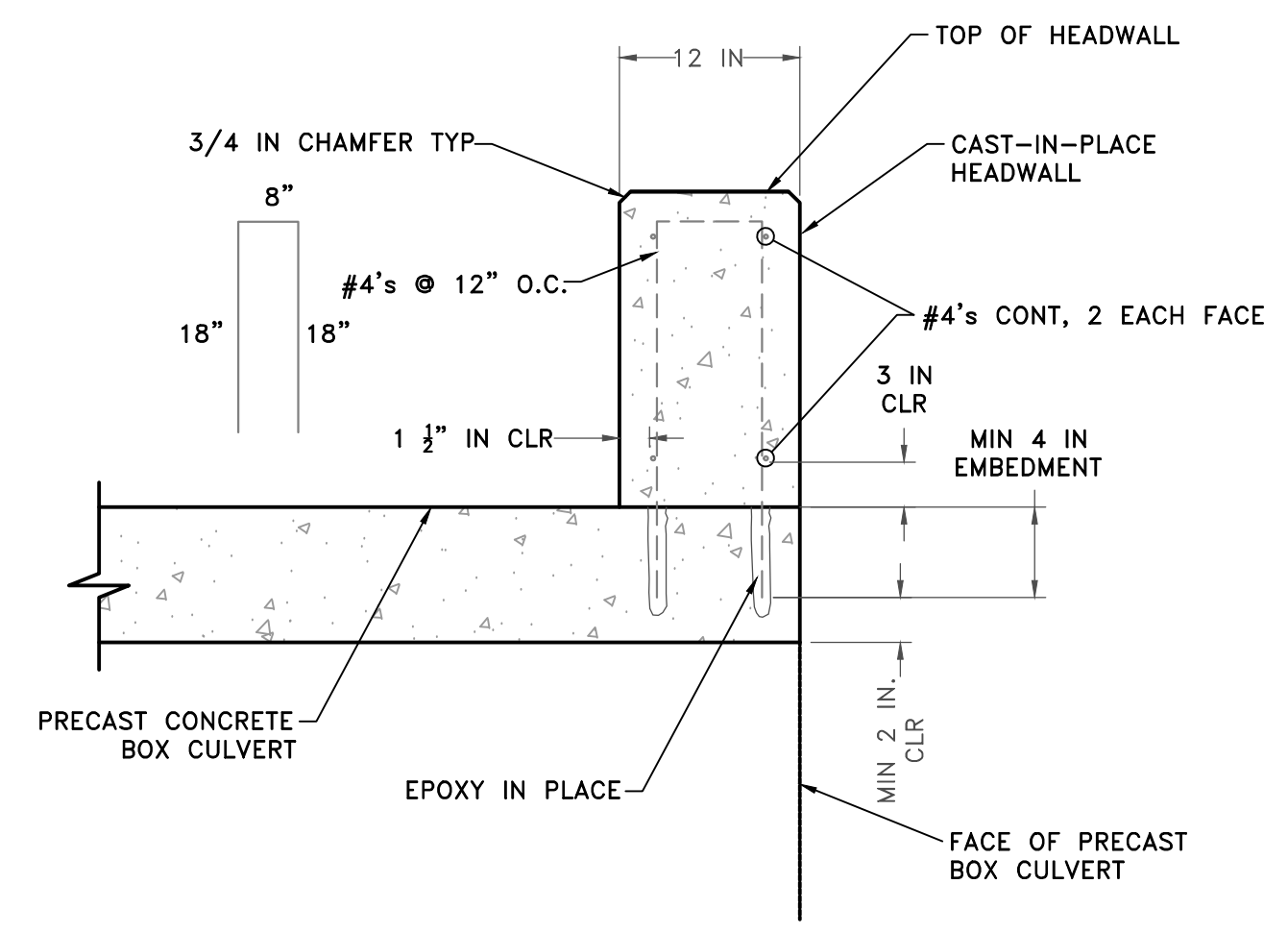
APRON KEY



TYPICAL REINFORCEMENT - FLUME PENETRATIONS



WINGWALL



HEADWALL ANCHORING

PRECAST CONCRETE BOX AND HEADWALL DETAILS

CONCRETE FLUME DETAILS

100%
SUBMITTAL

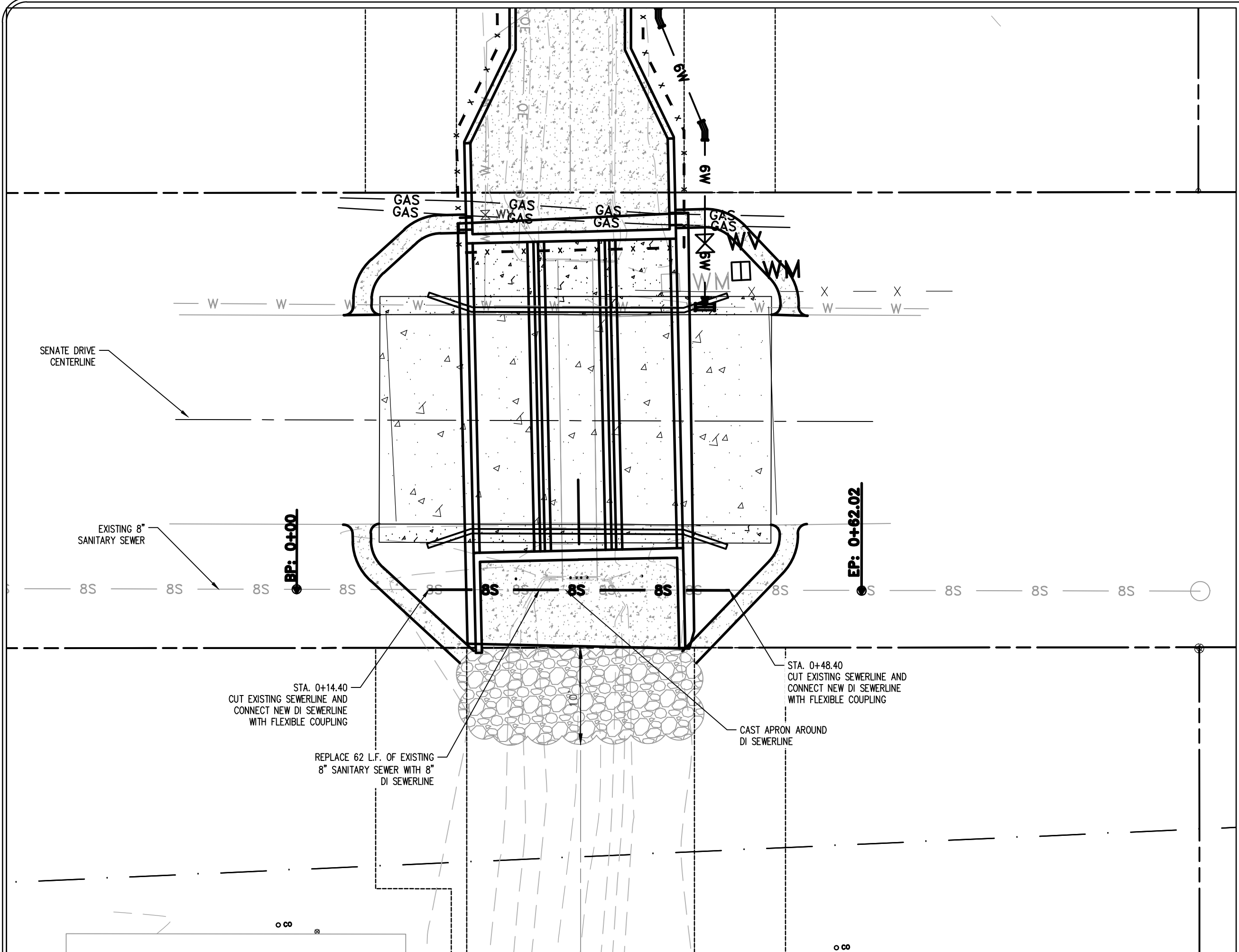


CITY OF LITTLE ROCK, ARKANSAS
SENATE DRIVE DRAINAGE IMPROVEMENTS
CULVERT PLAN & SECTION

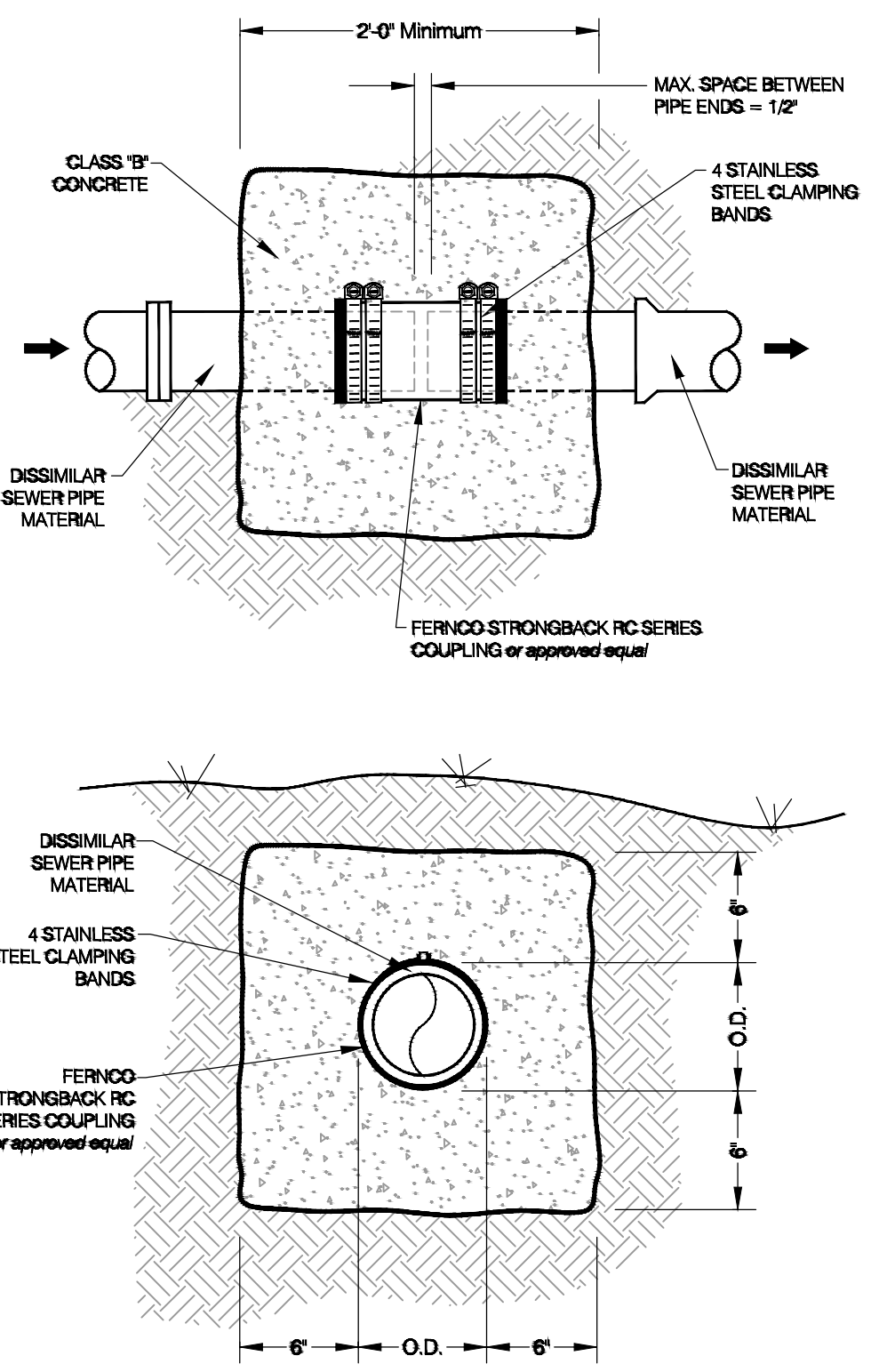
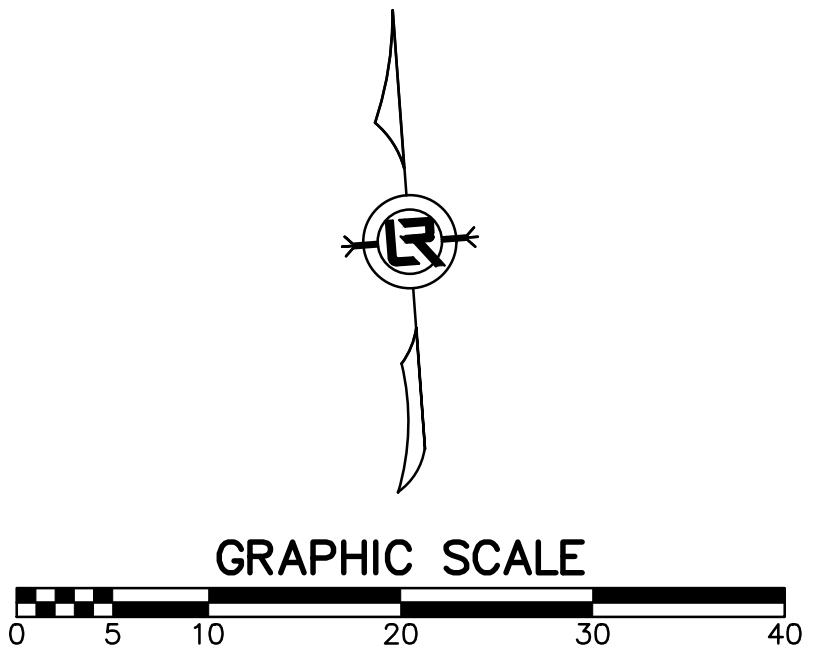
DEPARTMENT OF PUBLIC WORKS
CIVIL ENGINEERING
701 W. MARKHAM
LITTLE ROCK, ARKANSAS 72201



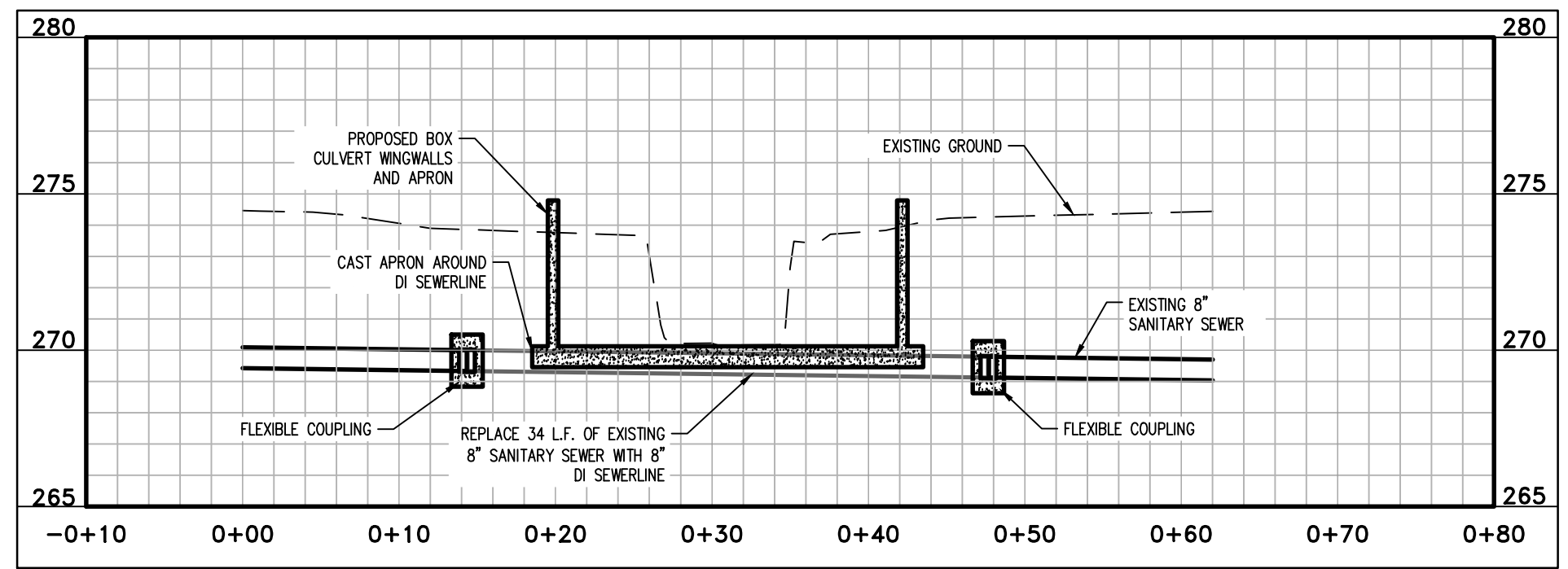
DRAWN BY
JWM
DESIGNED
KLF
CHECKED
KLF
DATE
03/19/21
SCALE
AS SHOWN
PROJECT NO.
CLR #02-17-DR-65
SHEET NO.
C6



SANITARY SEWER PLAN VIEW

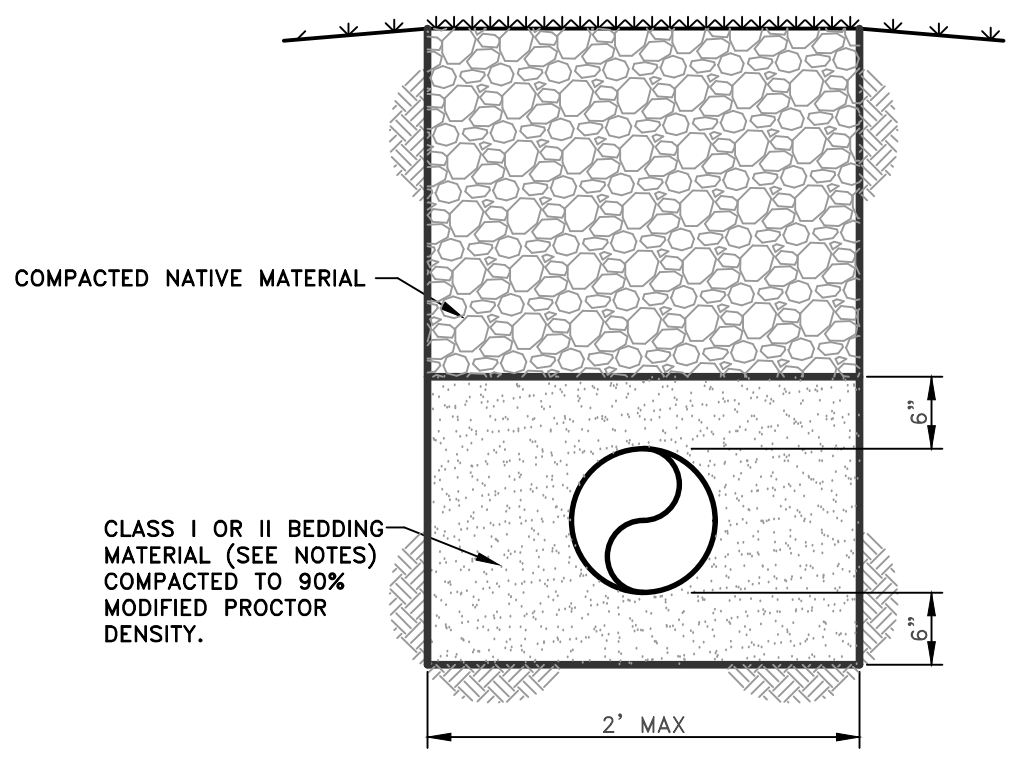


FLEXIBLE COUPLING
DETAIL
SCALE: N.T.S.

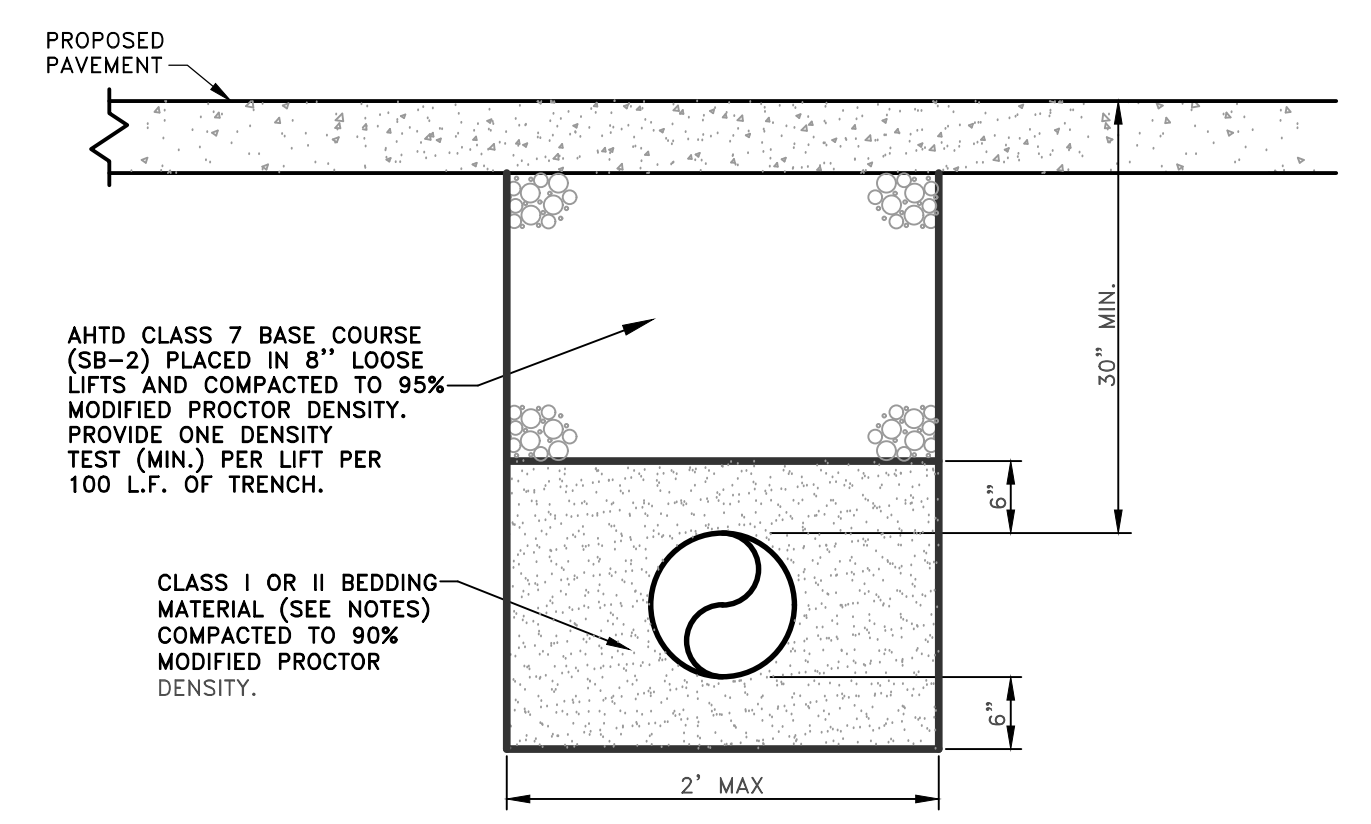


SANITARY SEWER PROFILE VIEW

- NOTES:
- CLASS I BEDDING MATERIAL—PER ASTM D2487 AND SHALL CONSIST OF MANUFACTURED ANGULAR, GRANULAR MATERIAL
 - CLASS II BEDDING MATERIAL—PER ASTM D2487 AND:
 - SOIL TYPE GW—WELL-GRADED GRAVELS AND GRAVEL SAND MIXTURES, LITTLE OR NO FINES, 50% OR MORE RETAINED ON NO. 4 SIEVE, MORE THAN 95% RETAINED ON NO. 200 SIEVE, CLEAN.
 - SOIL TYPE GP—POORLY GRADED GRAVELS AND GRAVEL-SAND MIXTURES, LITTLE OR NO FINES, 50% OR MORE RETAINED ON NO. 4 SIEVE, MORE THAN 95% RETAINED ON NO. 200 SIEVE CLEAN.



BEDDING AND BACKFILL FOR
PVC SANITARY SEWER PIPE (LAWN AREAS)
DETAIL
SCALE: N.T.S.



BEDDING AND BACKFILL FOR
PVC SANITARY SEWER PIPE (PAVED AREAS)
DETAIL
SCALE: N.T.S.

100%
SUBMITTAL



REVISIONS	DATE

CITY OF LITTLE ROCK, ARKANSAS
SENATE DRIVE DRAINAGE IMPROVEMENTS
PROPOSED SEWER MODIFICATIONS
PLAN & PROFILE - DETAILS

DEPARTMENT OF PUBLIC WORKS
CIVIL ENGINEERING
701 W. MARKHAM
LITTLE ROCK, ARKANSAS 72201



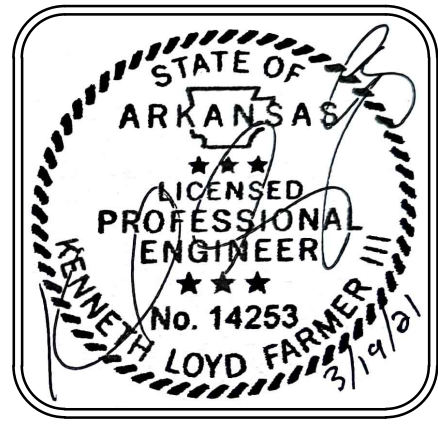
DRAWN BY CKS
DESIGNED KLF
CHECKED KLF
DATE 03/19/21
SCALE 1"=10'
PROJECT NO. CLR #02-17-DR-65
SHEET NO. C7



REVISIONS	DATE

CITY OF LITTLE ROCK, ARKANSAS
 SENATE DRIVE DRAINAGE IMPROVEMENTS
 PROPERTY OWNERSHIP AND
 FIELD TIES / LAYOUT SHEET

DEPARTMENT OF PUBLIC WORKS
 CIVIL ENGINEERING
 701 W. MARKHAM
 LITTLE ROCK, ARKANSAS 72201



DRAWN BY
 JWM
 DESIGNED
 KLF
 CHECKED
 KLF
 DATE
 03/19/21
 SCALE
 1"=40'
 PROJECT NO.
 CLR 02-17-DR-65
 SHEET NO.
 C9

OWNERSHIP INFORMATION			
Senate Drive Drainage Improvements			
Final Design (100%)			
March 19, 2021			
PARCEL #	NAME	ADDRESS	PARCEL ID
1	BRENDA J. & TOMMY L. LONG	6300 SENATE DR, LITTLE ROCK, AR 72209	45L0030001300
2	ST THERESAS CATHOLIC CHURCH	6219 BASELINE RD, LITTLE ROCK, AR 72209	45L0010000300
3	DAYSWORKAPV, LLC	6216 SENATE DR, LITTLE ROCK, AR 72209	45L0030001200
4	STERLING HARRISON GARRETT	6212 SENATE DR, LITTLE ROCK, AR 72209	45L0030001100
5	SHAKIA MALLETT	6217 SENATE DR, LITTLE ROCK, AR 72209	45L0040002300
6	PINTER PROPERTIES	6213 SENATE DR, LITTLE ROCK, AR 72209	45L0040002400
7	TAMMIE MASON	6222 DENHAM DRIVE, LITTLE ROCK, AR 72209	45L0040001100

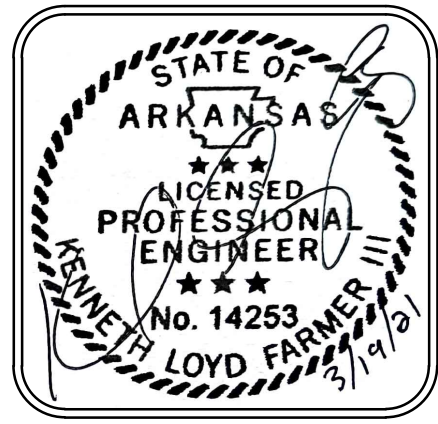
100%
 SUBMITTAL



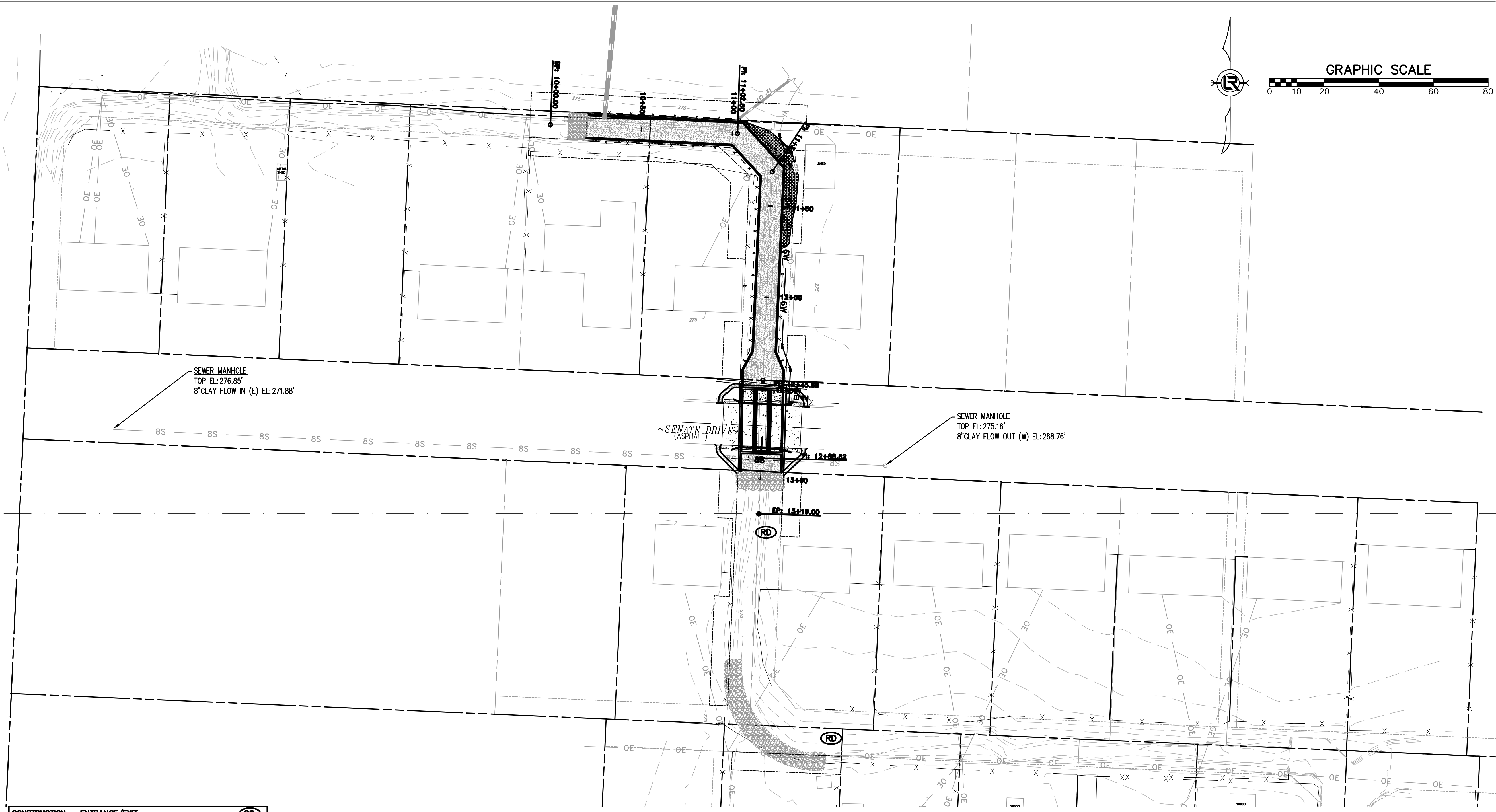
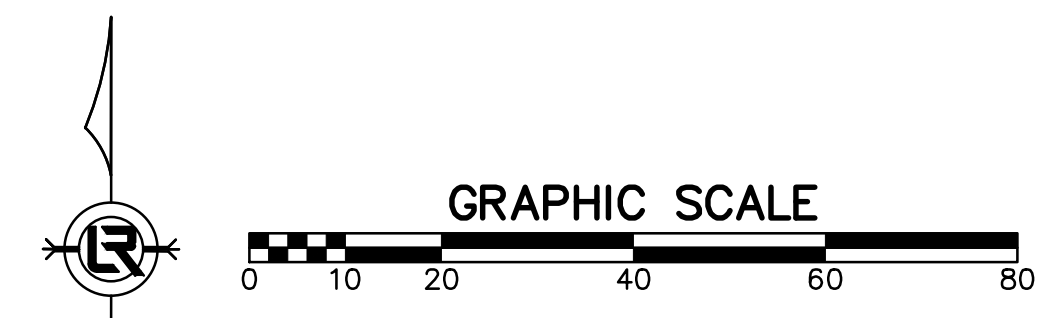
REVISIONS	DATE

CITY OF LITTLE ROCK, ARKANSAS
 SENATE DRIVE DRAINAGE IMPROVEMENTS
 EROSION CONTROL PHASE 1

DEPARTMENT OF PUBLIC WORKS
 CIVIL ENGINEERING
 701 W. MARKHAM
 LITTLE ROCK, ARKANSAS 72201



DRAWN BY
 JWM
 DESIGNED
 KLF
 CHECKED
 KLF
 DATE
 03/19/21
 SCALE
 1"=20'
 PROJECT NO.
 CLR #02-17-DR-65
 SHEET NO.
 C10



CONSTRUCTION - ENTRANCE/EXIT	(CO)
CHECK DAM	(CD)
DIVERSION BERM	(DI)
DOWNDRAIN STRUCTURE - TEMPORARY	(DN)
ROCK DAM	(RD)
SEDIMENT BARRIER - SILT FENCE	(SD1)
SEDIMENT BARRIER - GRAVEL RING	(SD2)
SEDIMENT BARRIER - BLOCK & GRAVEL	(SD3)
SEDIMENT BARRIER - BLOCK	(SD4)
TEMPORARY SEDIMENT BASIN	(SBI)
SILT FENCE - TYPE A	(SFA)
SILT FENCE - TYPE B	(SFB)
SILT FENCE - TYPE C	(SFC)
STORM DRAIN OUTLET PROTECTION	(ST)
SURFACE ROUGHENING	(SU)
DISTURBED AREA STABILIZATION - TEMPORARY STABILIZATION	(TS1)
DISTURBED AREA STABILIZATION - TEMPORARY GRASSING	(TS2)
DISTURBED AREA STABILIZATION - PERMANENT GRASSING	(TS3)
MATTING/BLANKETS	(Mb)

CONSTRUCTION EROSION CONTROL BEST MANAGEMENT PRACTICES

UPON IMPLEMENTATION AND INSTALLATION OF THE FOLLOWING AREAS: TRAILERS, PARKING, LAY DOWN, PORTA-POTTY, WHEEL WASH, CONCRETE WASHOUT, FUEL AND MATERIAL STORAGE CONTAINERS, SOLID WASTE CONTAINERS, ETC., IMMEDIATELY DENOTE THEM ON THE SITE MAPS AND NOTE ANY CHANGES IN LOCATION AS THEY OCCUR THROUGHOUT THE CONSTRUCTION PROCESS. IN ADDITION, NOTE ANY OFF-SITE AREA WHERE FILL IS IMPORTED FROM OR SOIL IS EXPORTED TO ON THE SITE MAPS.

PHASE 1

1. INSTALL SWPPP INFORMATION SIGN.
2. INSTALL AND STABILIZE HYDRAULIC CONTROL STRUCTURES (DIKES, SWALES, CHECK DAMS, ETC.). CLEAR ONLY THOSE AREAS NECESSARY TO INSTALL HYDRAULIC CONTROL DEVICES.
3. PREPARE TEMPORARY PARKING AND STORAGE AREA.
4. HALT ALL ACTIVITIES AND CONTACT THE CITY OF LITTLE ROCK TO PERFORM INSPECTION AND ACCEPTANCE OF BMP'S.

100%
 SUBMITTAL



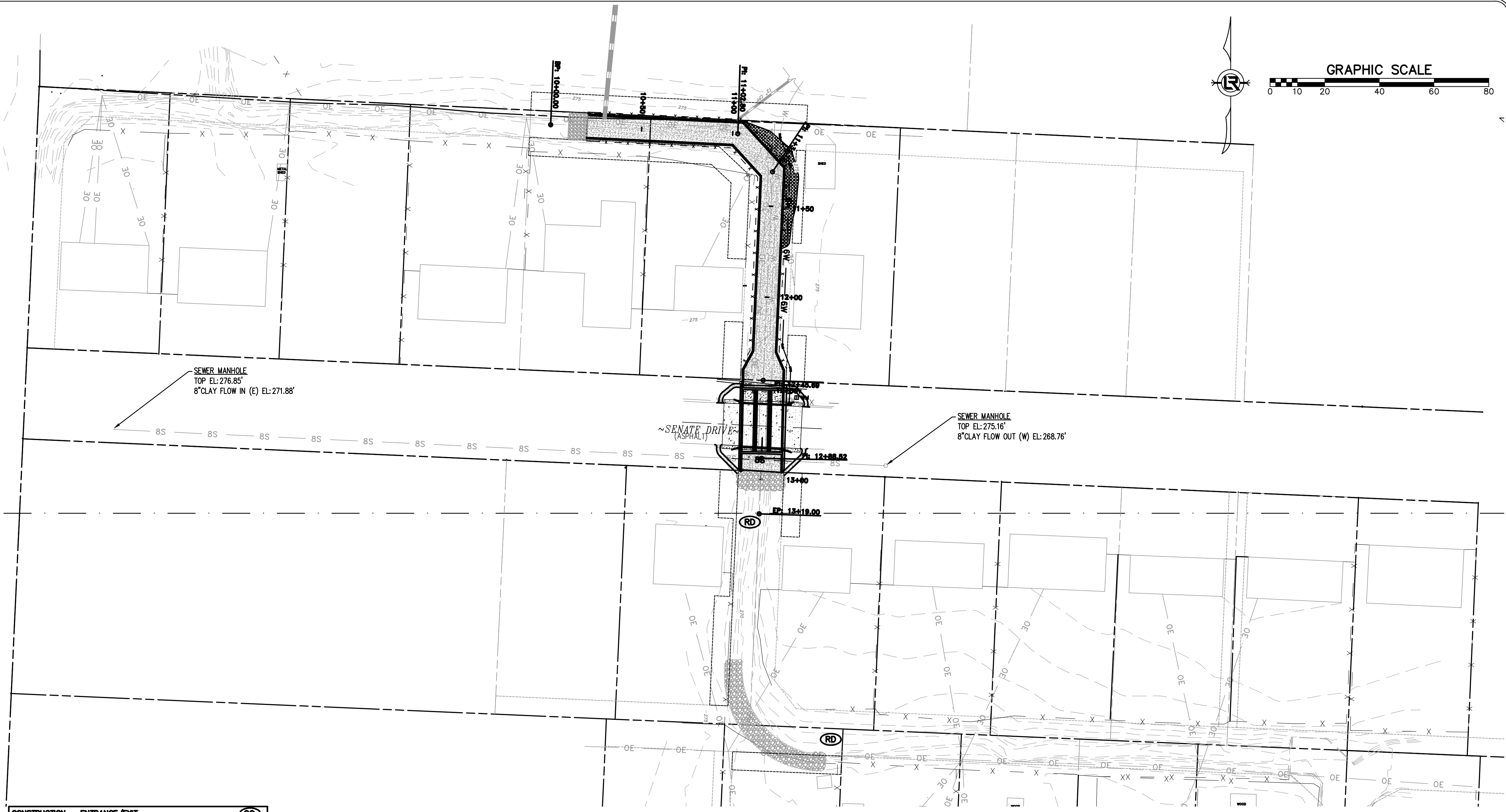
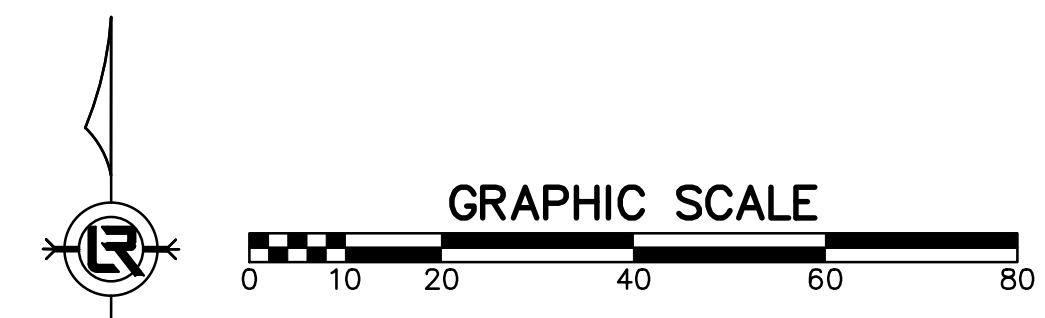
REVISIONS	DATE

CITY OF LITTLE ROCK, ARKANSAS
 SENATE DRIVE DRAINAGE IMPROVEMENTS
 EROSION CONTROL PHASE 2

DEPARTMENT OF PUBLIC WORKS
 CIVIL ENGINEERING
 701 W. MARKHAM
 LITTLE ROCK, ARKANSAS 72201



DRAWN BY
 JWM
 DESIGNED
 KLF
 CHECKED
 KLF
 DATE
 03/19/21
 SCALE
 1"=20'
 PROJECT NO.
 CLR #02-17-DR-65
 SHEET NO.
 C11



CONSTRUCTION - ENTRANCE/EXIT	(CO)
CHECK DAM	(CD)
DIVERSION BERM	(DI)
DOWNDRAIN STRUCTURE - TEMPORARY	(DN)
ROCK DAM	(RD)
SEDIMENT BARRIER - SILT FENCE	(SD1)
SEDIMENT BARRIER - GRAVEL RING	(SD2)
SEDIMENT BARRIER - BLOCK & GRAVEL	(SD3)
SEDIMENT BARRIER - BLOCK	(SD4)
TEMPORARY SEDIMENT BASIN	(SBI)
SILT FENCE - TYPE A	(SFA)
SILT FENCE - TYPE B	(SFB)
SILT FENCE - TYPE C	(SFC)
STORM DRAIN OUTLET PROTECTION	(ST)
SURFACE ROUGHENING	(SU)
DISTURBED AREA STABILIZATION - TEMPORARY STABILIZATION	(TS1)
DISTURBED AREA STABILIZATION - TEMPORARY GRASSING	(TS2)
DISTURBED AREA STABILIZATION - PERMANENT GRASSING	(TS3)
MATTING/BLANKETS	(Mb)

CONSTRUCTION EROSION CONTROL
 BEST MANAGEMENT PRACTICES

UPON IMPLEMENTATION AND INSTALLATION OF THE FOLLOWING AREAS: TRAILERS, PARKING, LAY DOWN, PORTA-POTTY, WHEEL WASH, CONCRETE WASHOUT, FUEL AND MATERIAL STORAGE CONTAINERS, SOLID WASTE CONTAINERS, ETC., IMMEDIATELY DENOTE THEM ON THE SITE MAPS AND NOTE ANY CHANGES IN LOCATION AS THEY OCCUR THROUGHOUT THE CONSTRUCTION PROCESS. IN ADDITION, NOTE ANY OFF-SITE AREA WHERE FILL IS IMPORTED FROM OR SOIL IS EXPORTED TO ON THE SITE MAPS.

PHASE 2

- BEGIN SITE DEMOLITION, CLEARING AND GRUBBING.
- CONTINUE GRADING THE SITE.
- INSTALL UTILITIES, UNDERDRAINS, STORM SEWERS & INLETS.
- PREPARE SUBGRADE, ROAD BASE AND CURBS AND GUTTERS.
- CONSTRUCT ROADWAY TRANSITIONS.
- INSTALL APPROPRIATE INLET PROTECTION DEVICES FOR PAVED AREAS AS WORK PROGRESSES.

100%
 SUBMITTAL



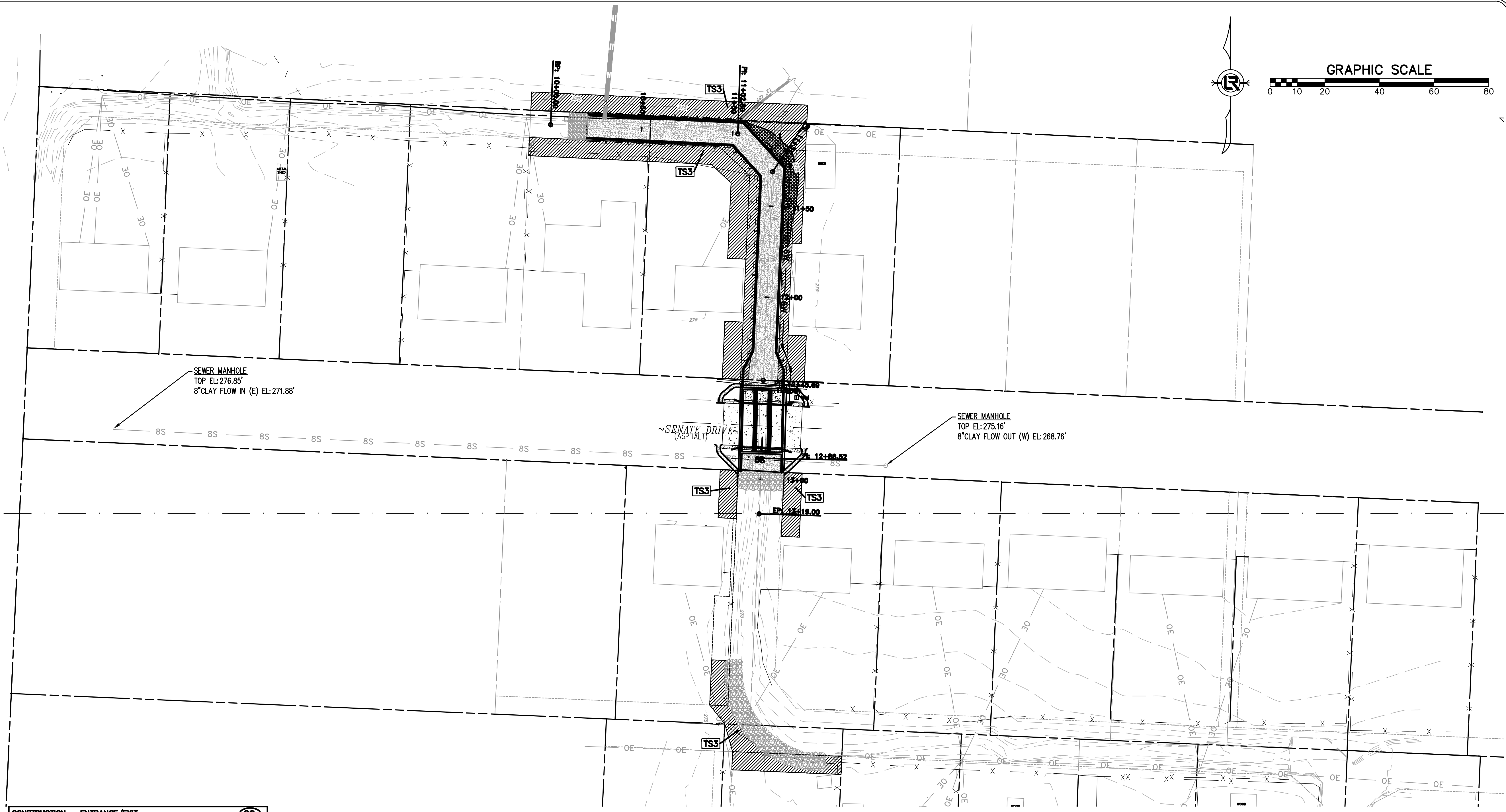
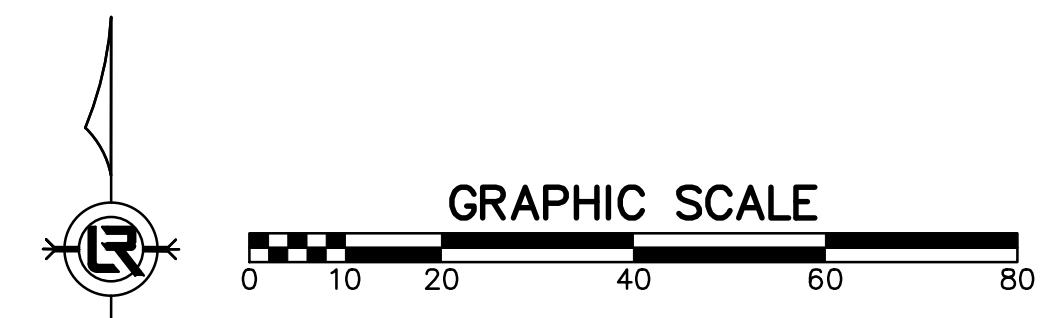
REVISIONS	DATE

CITY OF LITTLE ROCK, ARKANSAS
SENATE DRIVE DRAINAGE IMPROVEMENTS
EROSION CONTROL PHASE 3

DEPARTMENT OF PUBLIC WORKS
CIVIL ENGINEERING
701 W. MARKHAM
LITTLE ROCK, ARKANSAS 72201



DRAWN BY
JWM
DESIGNED
KLF
CHECKED
KLF
DATE
03/19/21
SCALE
1"=20'
PROJECT NO.
CLR #02-17-DR-65
SHEET NO.
C12



CONSTRUCTION - ENTRANCE/EXIT	(CO)
CHECK DAM	(CD)
DIVERSION BERM	(DI)
DOWNDRAIN STRUCTURE - TEMPORARY	(DN)
ROCK DAM	(RD)
SEDIMENT BARRIER - SILT FENCE	(SD1)
SEDIMENT BARRIER - GRAVEL RING	(SD2)
SEDIMENT BARRIER - BLOCK & GRAVEL	(SD3)
SEDIMENT BARRIER - BLOCK	(SD4)
TEMPORARY SEDIMENT BASIN	(SBI)
SILT FENCE - TYPE A	(SFA)
SILT FENCE - TYPE B	(SFB)
SILT FENCE - TYPE C	(SFC)
STORM DRAIN OUTLET PROTECTION	(ST)
SURFACE ROUGHENING	(SU)
DISTURBED AREA STABILIZATION - TEMPORARY STABILIZATION	(TS1)
DISTURBED AREA STABILIZATION - TEMPORARY GRASSING	(TS2)
DISTURBED AREA STABILIZATION - PERMANENT GRASSING	(TS3)
MATTING/BLANKETS	(Mb)

**CONSTRUCTION EROSION CONTROL
BEST MANAGEMENT PRACTICES**

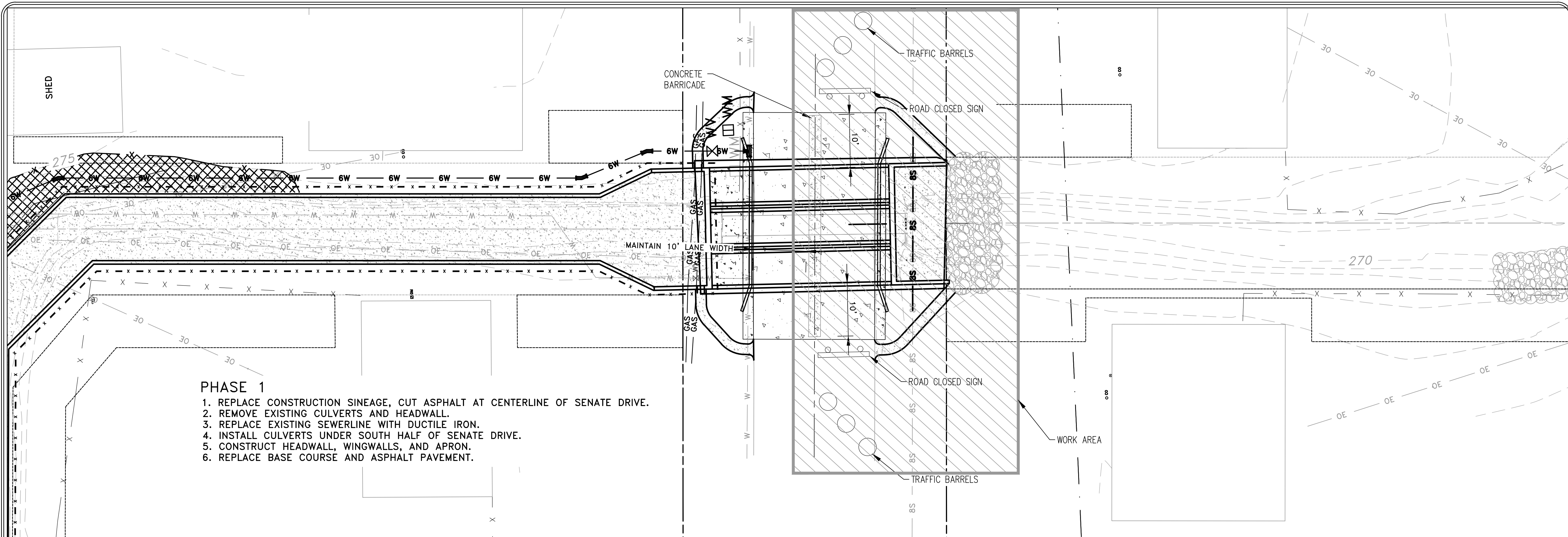
UPON IMPLEMENTATION AND INSTALLATION OF THE FOLLOWING AREAS: TRAILERS, PARKING, LAY DOWN, PORTA-POTTY, WHEEL WASH, CONCRETE WASHOUT, FUEL AND MATERIAL STORAGE CONTAINERS, SOLID WASTE CONTAINERS, ETC., IMMEDIATELY DENOTE THEM ON THE SITE MAPS AND NOTE ANY CHANGES IN LOCATION AS THEY OCCUR THROUGHOUT THE CONSTRUCTION PROCESS. IN ADDITION, NOTE ANY OFF-SITE AREA WHERE FILL IS IMPORTED FROM OR SOIL IS EXPORTED TO ON THE SITE MAPS.

PHASE 3

1. FINISH GRADE SIDE SLOPES & PREPARE SUBGRADES FOR SIDEWALKS, ETC.
2. PREPARE SITE FOR PAVING.
3. PAVE WHERE INDICATED ON PLANS. CONSTRUCT SIDEWALKS.
4. INSTALL APPROPRIATE INLET PROTECTION DEVICES FOR PAVED AREAS AS WORK PROGRESSES.
5. COMPLETE GRADING AND INSTALLATION OF PERMANENT STABILIZATION OVER ALL NON-PAVED AREAS.

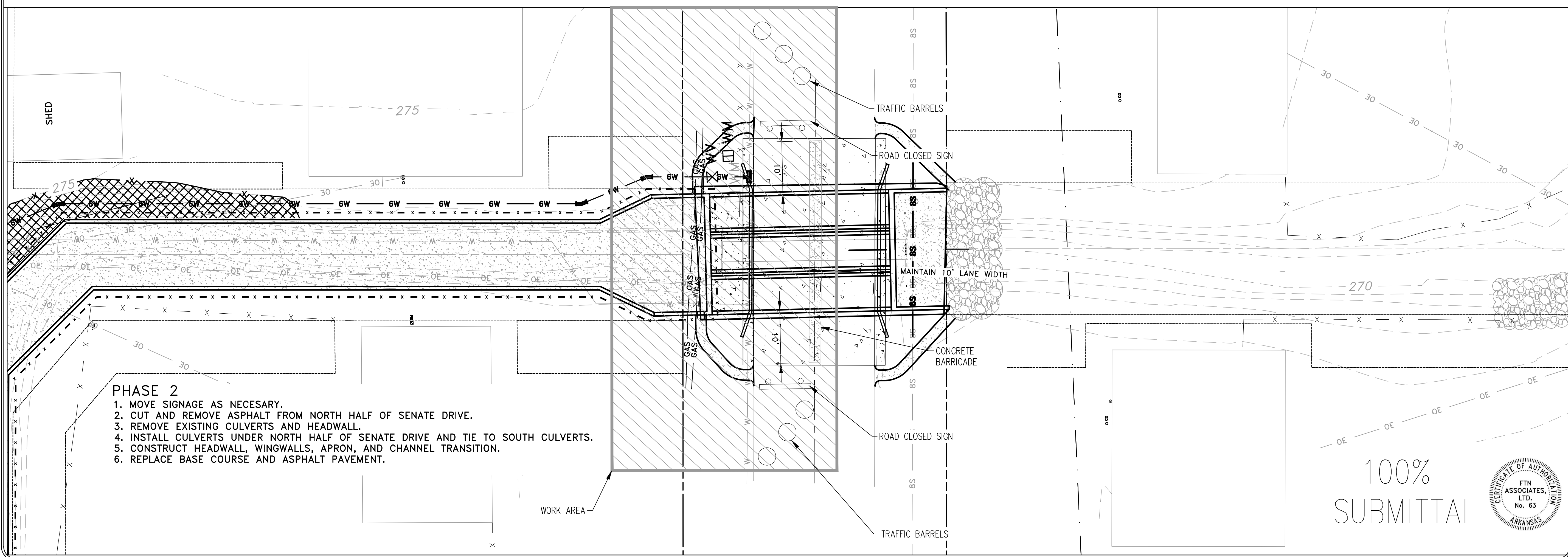
100%
SUBMITTAL





PHASE 1

1. REPLACE CONSTRUCTION SINEAGE, CUT ASPHALT AT CENTERLINE OF SENATE DRIVE.
2. REMOVE EXISTING CULVERTS AND HEADWALL.
3. REPLACE EXISTING SEWERLINE WITH DUCTILE IRON.
4. INSTALL CULVERTS UNDER SOUTH HALF OF SENATE DRIVE.
5. CONSTRUCT HEADWALL, WINGWALLS, AND APRON.
6. REPLACE BASE COURSE AND ASPHALT PAVEMENT.



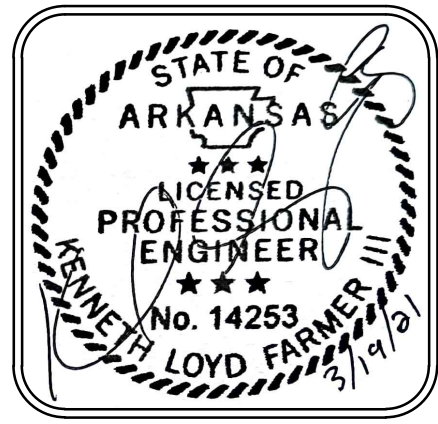
PHASE 2

1. MOVE SIGNAGE AS NECESSARY.
2. CUT AND REMOVE ASPHALT FROM NORTH HALF OF SENATE DRIVE.
3. REMOVE EXISTING CULVERTS AND HEADWALL.
4. INSTALL CULVERTS UNDER NORTH HALF OF SENATE DRIVE AND TIE TO SOUTH CULVERTS.
5. CONSTRUCT HEADWALL, WINGWALLS, APRON, AND CHANNEL TRANSITION.
6. REPLACE BASE COURSE AND ASPHALT PAVEMENT.

REVISIONS	DATE

CITY OF LITTLE ROCK, ARKANSAS
SENATE DRIVE DRAINAGE IMPROVEMENTS
 MAINTAINANCE OF TRAFFIC PLAN

DEPARTMENT OF PUBLIC WORKS
 CIVIL ENGINEERING
 701 W. MARKHAM
 LITTLE ROCK, ARKANSAS 72201



DRAWN BY
JWM
DESIGNED
KLF
CHECKED
KLF
DATE
03/19/21
SCALE
1"=10'
PROJECT NO.
CLR #02-17-DR-65
SHEET NO.
C13

100%
SUBMITTAL

